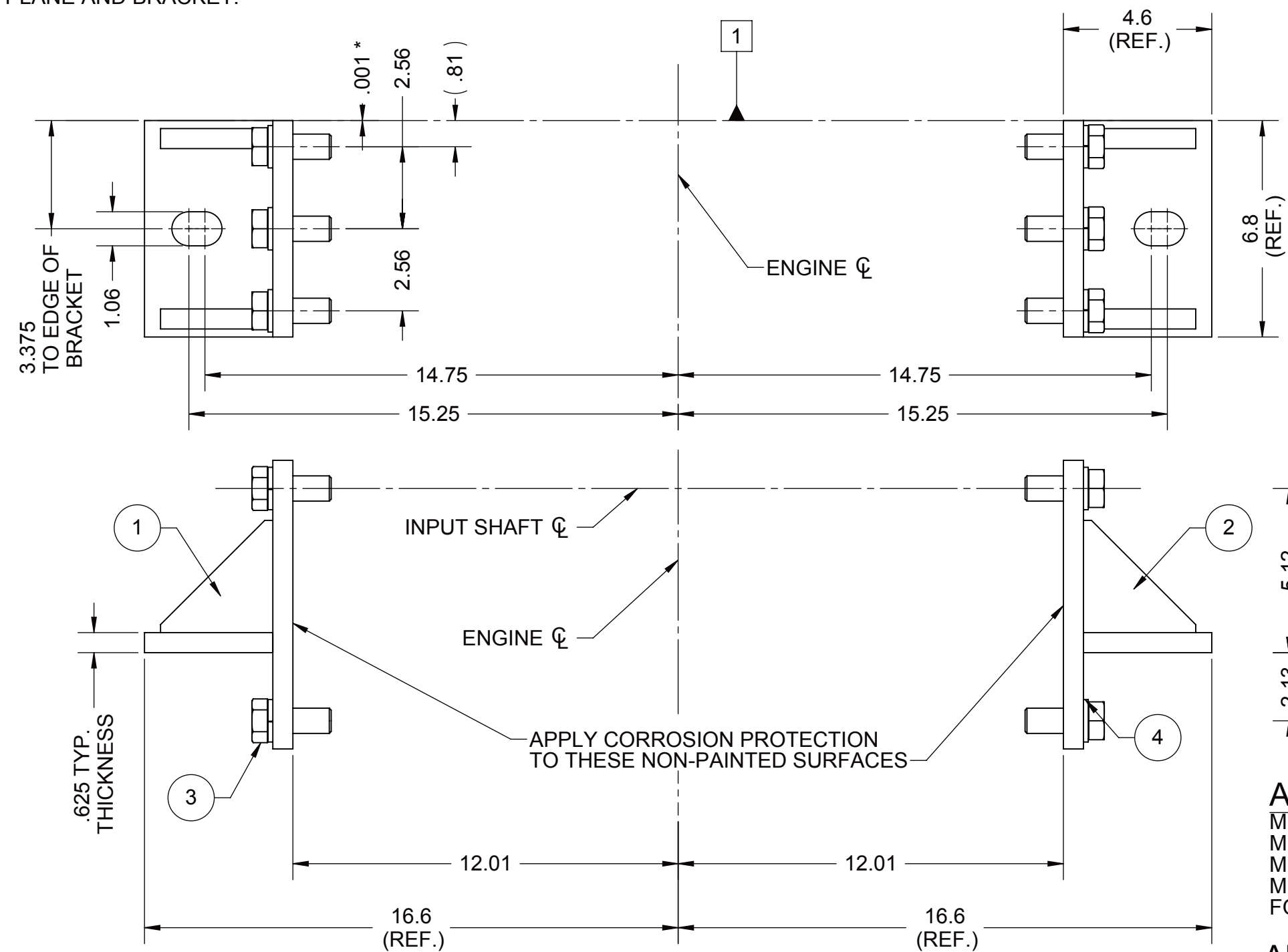


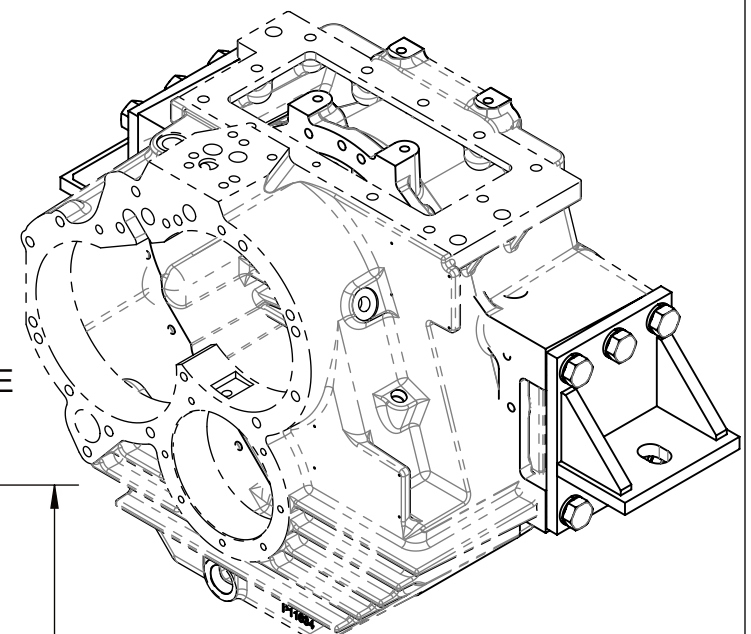
1 - INPUT GROUP REFERENCE PLANE

* .001" (REF) DISTANCE BETWEEN REFERENCE PLANE AND BRACKET.

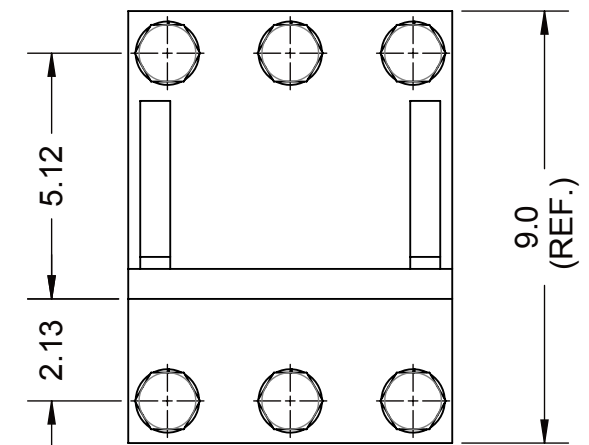


BILL OF MATERIAL			
ITEM NO.	QTY.	PART NO.	DESCRIPTION
1	1	1016428AV	BRACKET, MOUNTING
2	1	1016428AV	BRACKET, MOUNTING
3	12	MA1055M	SCREW, HEX HEAD
4	12	MA1082P	WASHER, LOCK

PART NUMBERS LISTED IN BOM ARE FOR SERVICE REFERENCE ONLY.



BOLT PATTERN IS SAME FOR BOTH BRACKETS



APPLICABLE MODELS:
 MG-5135A PER PX11380, PX12100 ASSEMBLY
 MGX-5135A PER PX11740, PX12380 ASSEMBLY
 MG-5136A PER 1027557 ASSEMBLY
 MGX-5136A PER 1025600 ASSEMBLY
 FOR MG(X)-5135SC & MG(X)-5136SC SEE SHEET 2

APPLICATION NOTE:
 - NOT FOR USE IN FREESTANDING APPLICATIONS.

- NOTES:**
1. PAINT BRACKETS TWIN DISC GRAY EXCEPT WHERE NOTED.
 2. REFER TO 1016428_SUPPLIER FOR SUPPLIER INFORMATION.
 3. REFER TO 1016428_SERIES FOR REFERENCE LIST OF BRACKETS.
 4. TORQUE SCREWS PER S574 OR SERVICE MANUAL VALUES, UNLESS OTHERWISE SPECIFIED.

D REVISED AND REDRAWN IN SOLIDWORKS

FIRST USE ASSEMBLY: 1025600 WEIGHT: 39.33 lb
 FIRST USE MODEL: MGX-5136A WR²: lb-in²
 SIMILAR TO:

INCH

NOTICE! THIS PRINT CONTAINS PROPRIETARY INFORMATION AND IS NOT TO BE USED IN ANY MANNER DETRIMENTAL TO THE INTEREST OF TWIN DISC, INCORPORATED
 THIS NOTICE IS NOT INTENDED TO NULLIFY OR LIMIT RIGHTS GRANTED TO THE U.S. GOVERNMENT OR OTHERS BY CONTRACT.

THIRD ANGLE PROJECTION

UNLESS OTHERWISE SPECIFIED MACHINED DIMENSIONS
 X.X ±0.030
 X.XX ±0.010
 X.XXX ±0.005

ALL ANGULAR TOLERANCES ±1°
 GEOMETRIC TOLERANCING PER ASME Y14.5M 1994

MATERIAL:

DATE: 04/28/2015
 SCALE: 1:4
 DRAWN BY: LT
 CHECKED BY: NFC
 APPROVED BY: NFC

DESCRIPTION:
 BRACKET, MOUNTING
 MG(X)-5135A&SC, MG(X)-5136A&SC

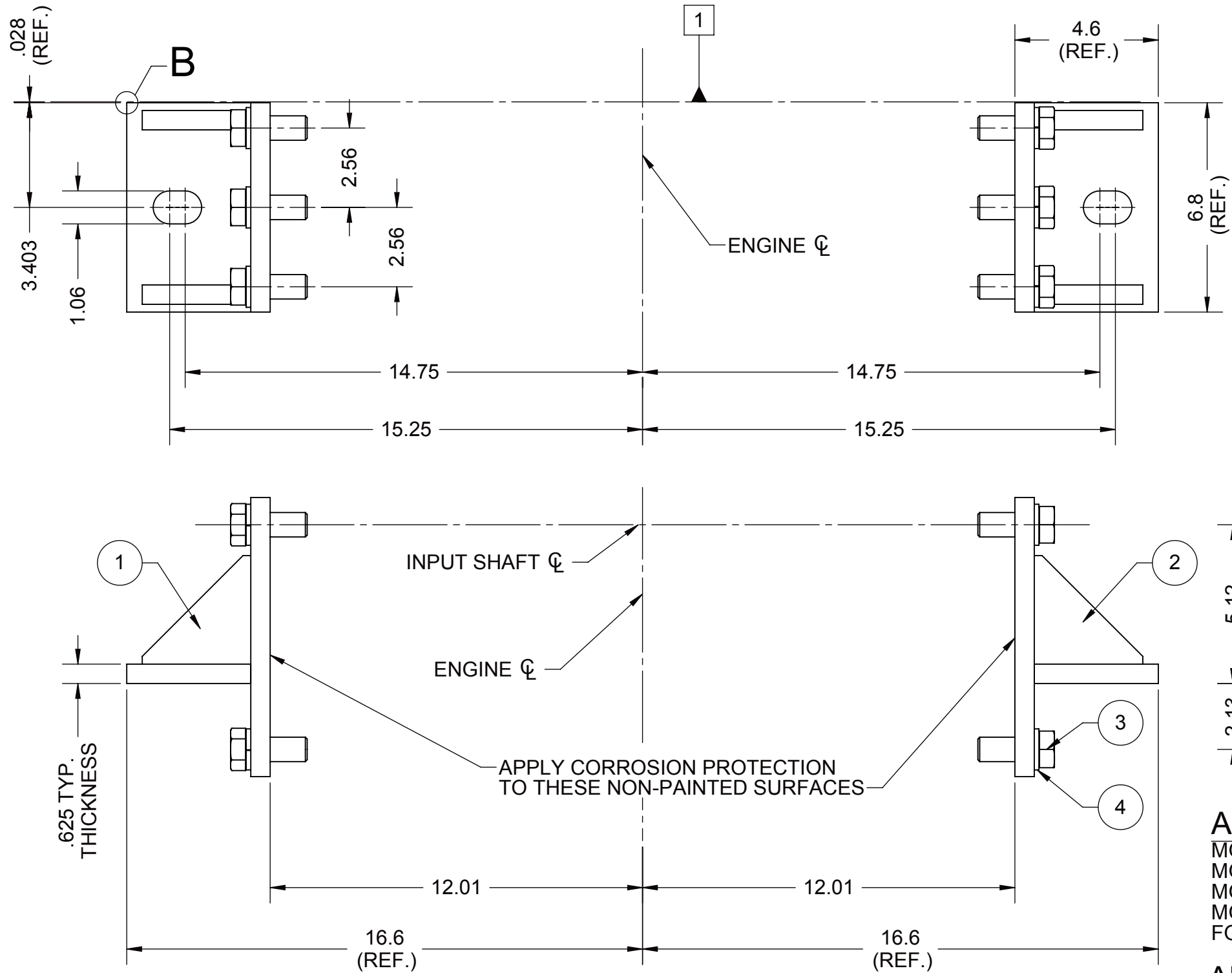
D	ECNWF-25010	06/02/2015
REV	CHANGE NO.	DATE

TWIN DISC
 RACINE, WI 53403 - USA

1016428AV

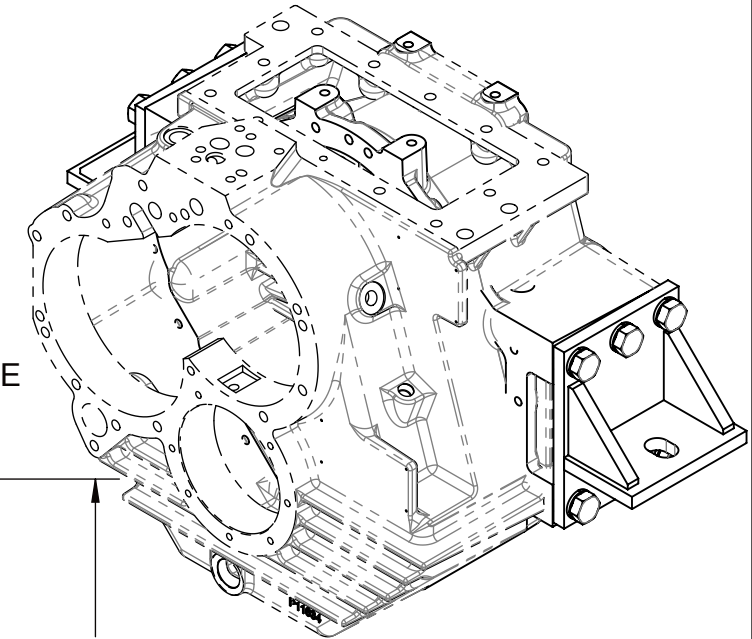
DWG SIZE: B	SHEET: 1 OF 2	REV: D
-------------	---------------	--------

1 - INPUT GROUP REFERENCE PLANE

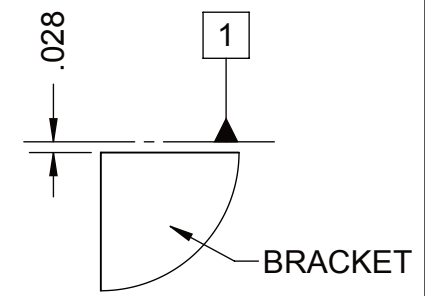
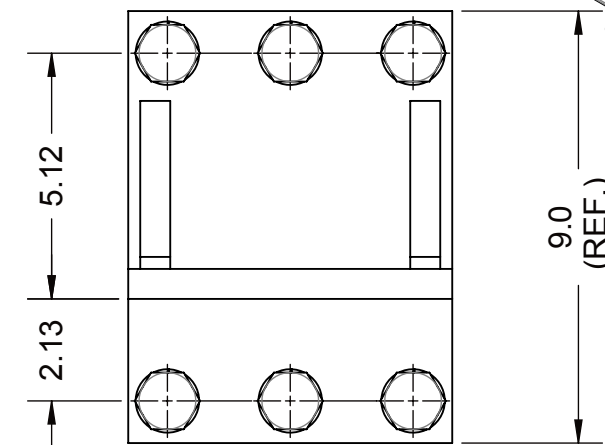


BILL OF MATERIAL			
ITEM NO.	QTY.	PART NO.	DESCRIPTION
1	1	1016428AV	BRACKET, MOUNTING
2	1	1016428AV	BRACKET, MOUNTING
3	12	MA1055M	SCREW, HEX HEAD
4	12	MA1082P	WASHER, LOCK

PART NUMBERS LISTED IN BOM ARE FOR SERVICE REFERENCE ONLY.



BOLT PATTERN IS SAME FOR BOTH BRACKETS



DETAIL B
SCALE 2 : 1

APPLICABLE MODELS:
 MG-5135SC PER PX11590 ASSEMBLY
 MGX-5135SC PER PX12450, PX12590 ASSEMBLY
 MG-5136SC PER 1027560 ASSEMBLY
 MGX-5136SC PER 1027445 ASSEMBLY
 FOR MG(X)-5135A & MG(X)-5136A SEE SHEET 1

APPLICATION NOTE:
 - NOT FOR USE IN FREESTANDING APPLICATIONS.

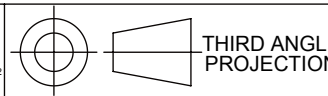
NOTES:

1. PAINT BRACKETS TWIN DISC GRAY EXCEPT WHERE NOTED.
2. REFER TO 1016428_SUPPLIER FOR SUPPLIER INFORMATION.
3. REFER TO 1016428_SERIES FOR REFERENCE LIST OF BRACKETS.
4. TORQUE SCREWS PER S574 OR SERVICE MANUAL VALUES, UNLESS OTHERWISE SPECIFIED.

(D) REVISED AND REDRAWN IN SOLIDWORKS

FIRST USE ASSEMBLY: 1025600
 FIRST USE MODEL: MGX-5136A
 SIMILAR TO:

WEIGHT: 39.33 lb
 WR²: lb-in²



THIRD ANGLE PROJECTION

INCH

NOTICE! THIS PRINT CONTAINS PROPRIETARY INFORMATION AND IS NOT TO BE USED IN ANY MANNER DETRIMENTAL TO THE INTEREST OF
TWIN DISC, INCORPORATED
 THIS NOTICE IS NOT INTENDED TO NULLIFY OR LIMIT RIGHTS GRANTED TO THE U.S. GOVERNMENT OR OTHERS BY CONTRACT.

UNLESS OTHERWISE SPECIFIED MACHINED DIMENSIONS
 X.X ±0.030
 X.XX ±0.010
 X.XXX ±0.005
 ALL ANGULAR TOLERANCES ±1°
 GEOMETRIC TOLERANCING PER ASME Y14.5M 1994

MATERIAL:

HEAT TREAT:

DESCRIPTION:
BRACKET, MOUNTING
MG(X)-5135A&SC, MG(X)-5136A&SC

DATE:
 04/28/2015

SCALE:
 1:4

DRAWN BY:
 LT

CHECKED BY:
 NFC

APPROVED BY:
 NFC

D	ECNWF-25010	06/02/2015
REV	CHANGE NO.	DATE



RACINE, WI 53403 - USA

1016428AV

DWG SIZE: B	SHEET: 2 OF 2	REV: D
-------------	---------------	--------