

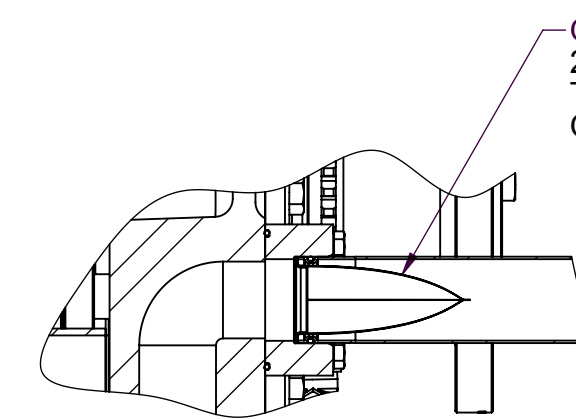
A. PROPORTIONAL CONTROL VALVE OPERATION
 1. WARNING DO NOT CONNECT VALVE COIL DIRECTLY TO BATTERY/POWER SUPPLY VOLTAGE.
 2. OPERATION TO BE PERFORMED WITH ONLY TWIN DISC CONTROL SYSTEMS OR MODULES.

B. MANUAL DIRECTIONAL CONTROL VALVE OPERATION
 1. WITH MANUAL DIRECTIONAL CONTROL VALVE IN CENTERED POSITION, PUSH TO ENGAGE SECONDARY CLUTCH.
 2. WITH MANUAL DIRECTIONAL CONTROL VALVE IN CENTERED POSITION, PULL TO ENGAGE PRIMARY CLUTCH.

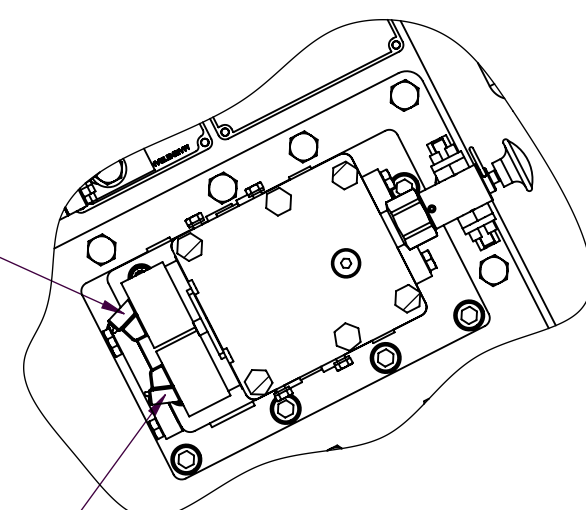
C. MANUAL DIRECTIONAL CONTROL VALVE MODE SWITCH
 1. SWITCH IS NORMALLY CLOSED WHEN MANUAL DIRECTIONAL CONTROL VALVE IS IN THE CENTERED POSITION AND OPEN WHEN LEVER IS PULLED AWAY FROM CENTERED POSITION.
 2. CURRENT = 20 AMP MAX.
 3. FOR WIRING SCHEMATIC, REFER TO CONTROL MODULE DRAWING.

D. REFERENCE S930 FOR TWIN DISC REQUIREMENTS FOR PRESSURE AND TEMPERATURE ALARM LEVELS.

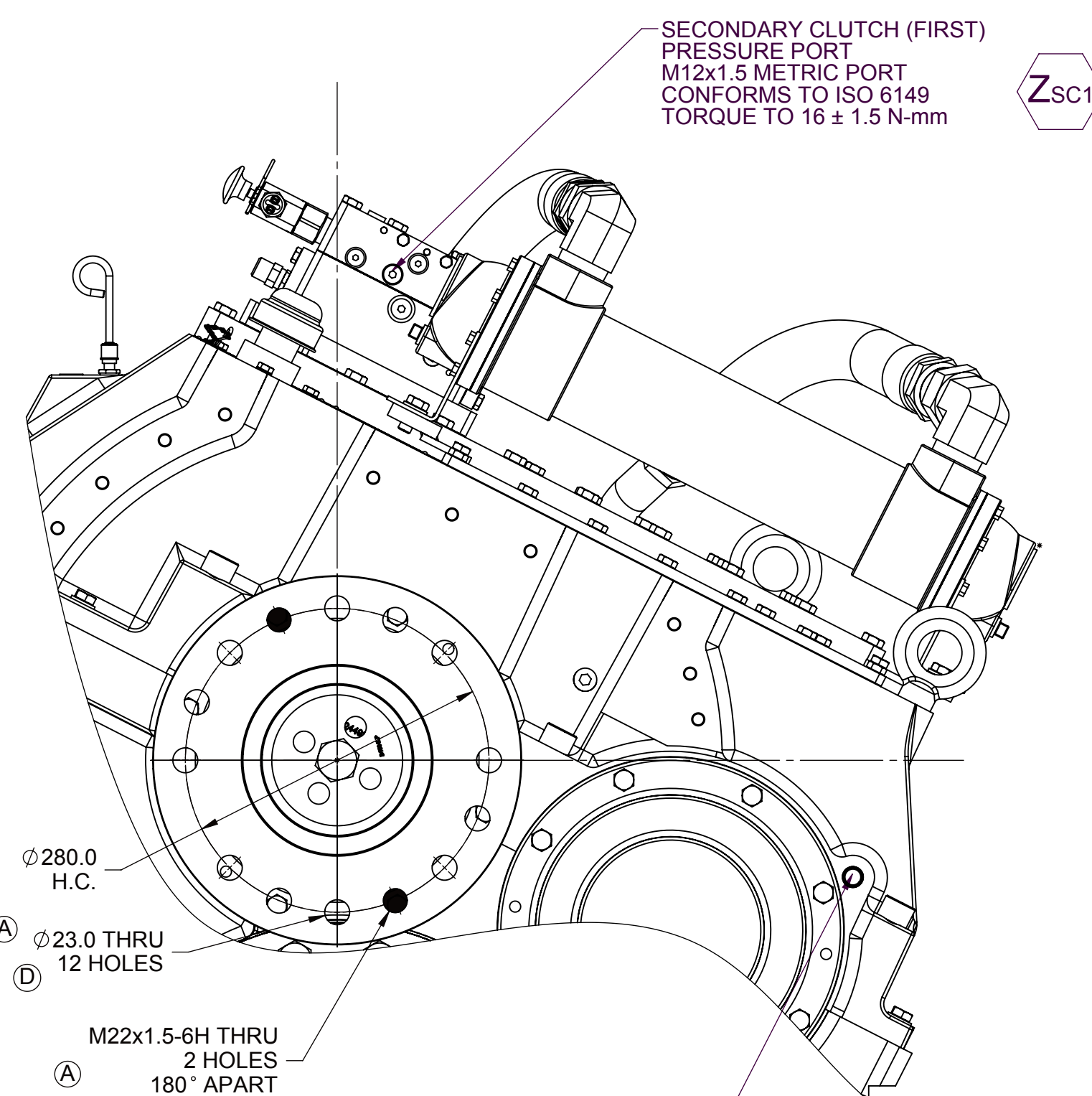
4 RIGHT MOUNTING BRACKET FACE



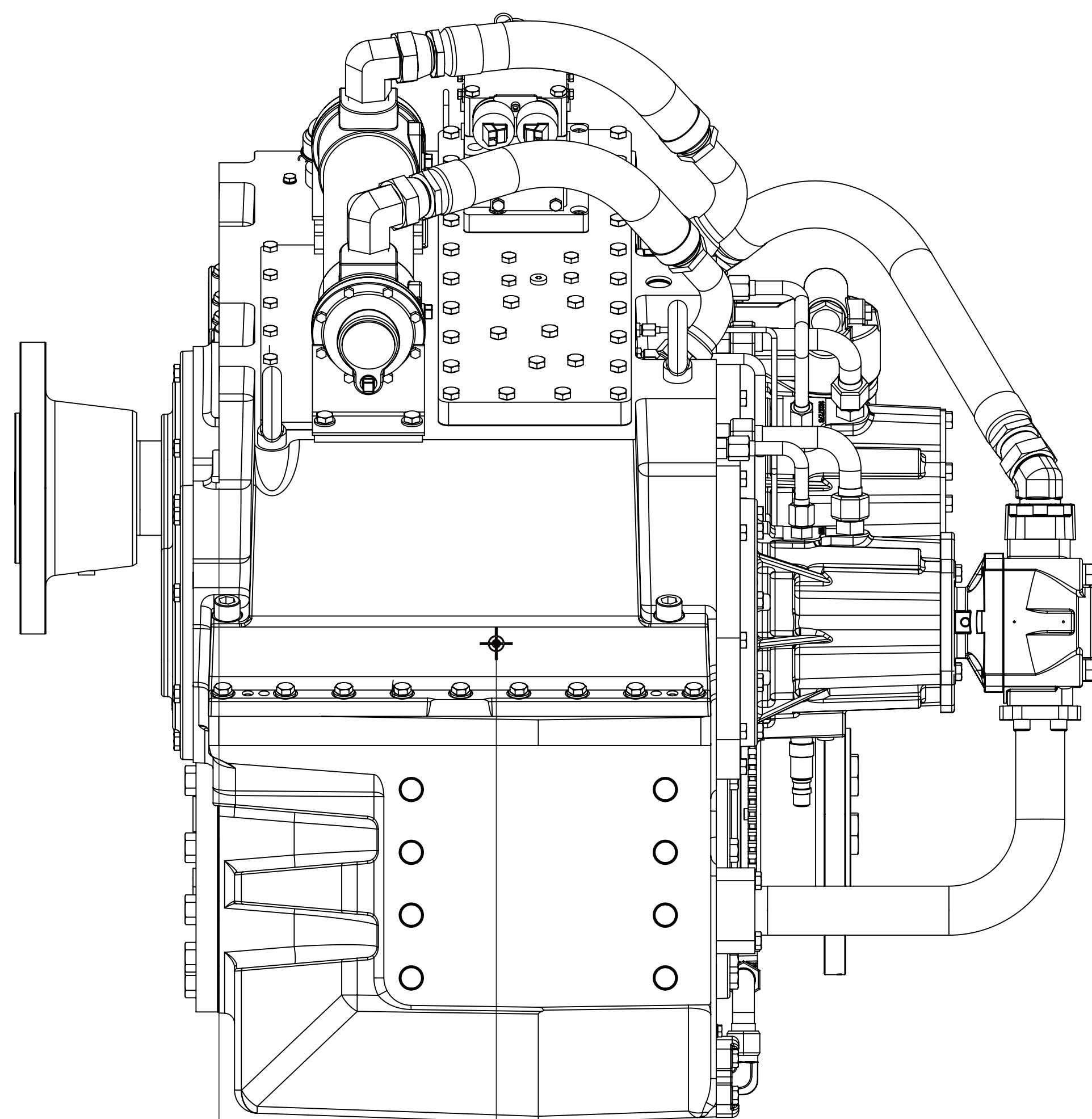
ENGAGES SECONDARY CLUTCH
SEE NOTE "A"



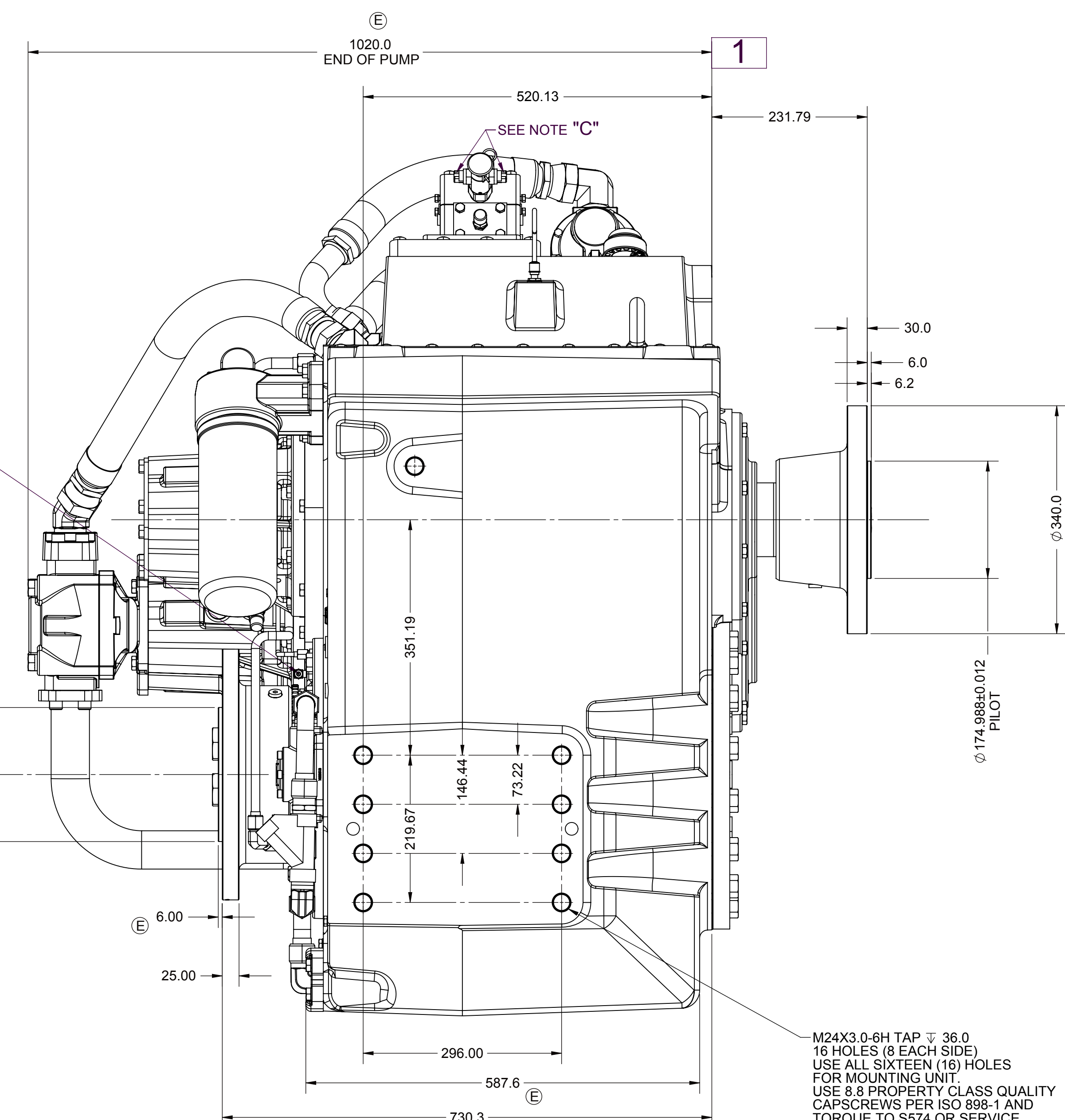
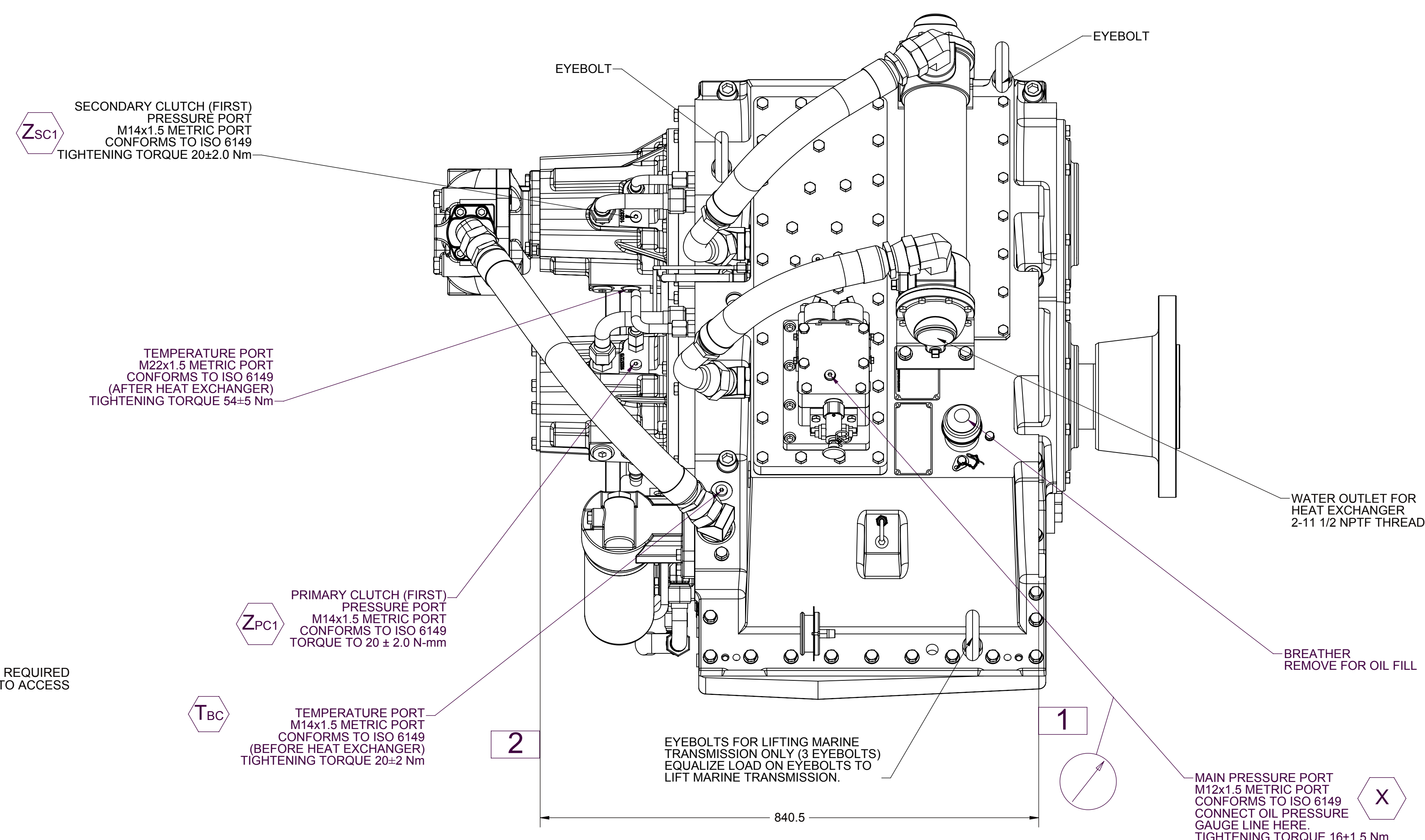
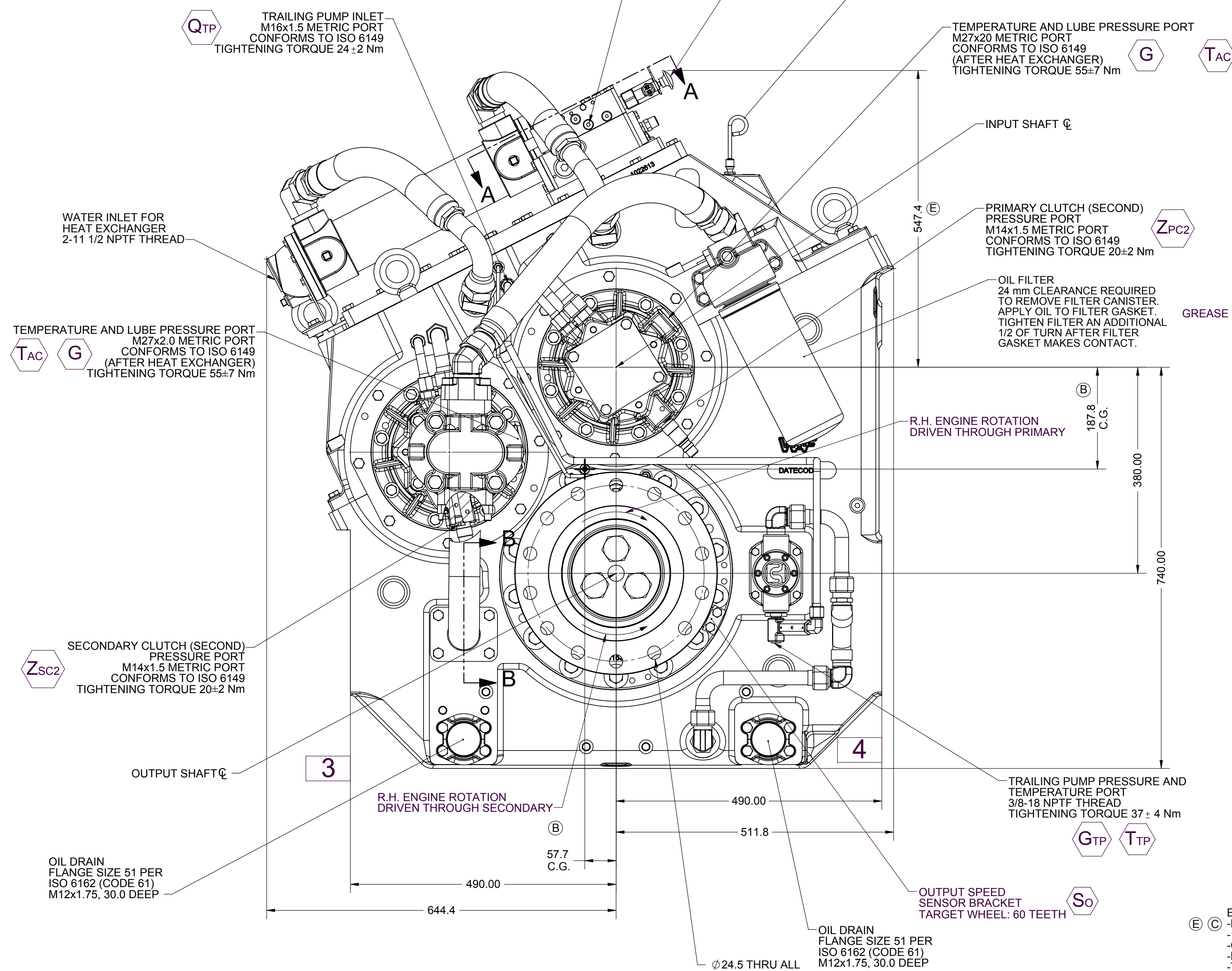
ENGAGES PRIMARY CLUTCH
SEE NOTE "A"





Si INPUT SPEED SENSOR POR
5/8-18UNF-2B TH'D.
TARGET WHEEL 51 TEETH



1 ← 323.12
G.G



M24X3.0-6H TAP ∇ 36.0
16 HOLES (8 EACH SIDE)
USE ALL SIXTEEN (16) HOLES
FOR MOUNTING UNIT.
USE 8.8 PROPERTY CLASS QUALITY
CAPSCREWS PER ISO 898-1 AND
TORQUE TO S574 OR SERVICE
MANUAL VALUES.

EQUIPMENT SHOWN: -MXG-61000SC PER 1024420 SERIES ASSEMBLIES -1023929 INPUT GRP -GP VALVE WITH EC050 MODULE -M19590A HEAT EXCHANGER -TRAILING PUMP		FIRST USE ASSEMBLY: FIRST USE MODEL: ORDER TO:	WEIGHT: <input type="text"/> kg NET WT: <input type="text"/> kg  THIRD ANGLE PROJECTION	MATERIAL: <input type="text"/> HEAT TREAT: <input type="text"/> DESCRIPTION: <input type="text"/> INSTALLATION: <input type="text"/> MXG-61000SC	DATE: 08/20/2010 TOILE: <input type="text"/> DRAWN BY: J.M.J. CHECKED BY: <input type="text"/> APPROVED BY: ALC DATED: A0 SHEET: 1 OF 1 REV: <input type="text"/>	 RACINE, WI 53403, USA 1024771C
------------------------------------------------------------------------------------------------------------------------------------------------------------------	--	------------------------------------------------------	------------------------------------------------------------------------------------------------------------------------------------------------------------------------------------	--------------------------------------------------------------------------------------------------------------------------------------------------------------	----------------------------------------------------------------------------------------------------------------------------------------------------------------------------------------	-------------------------------------------------------------------------------------------------------------------------