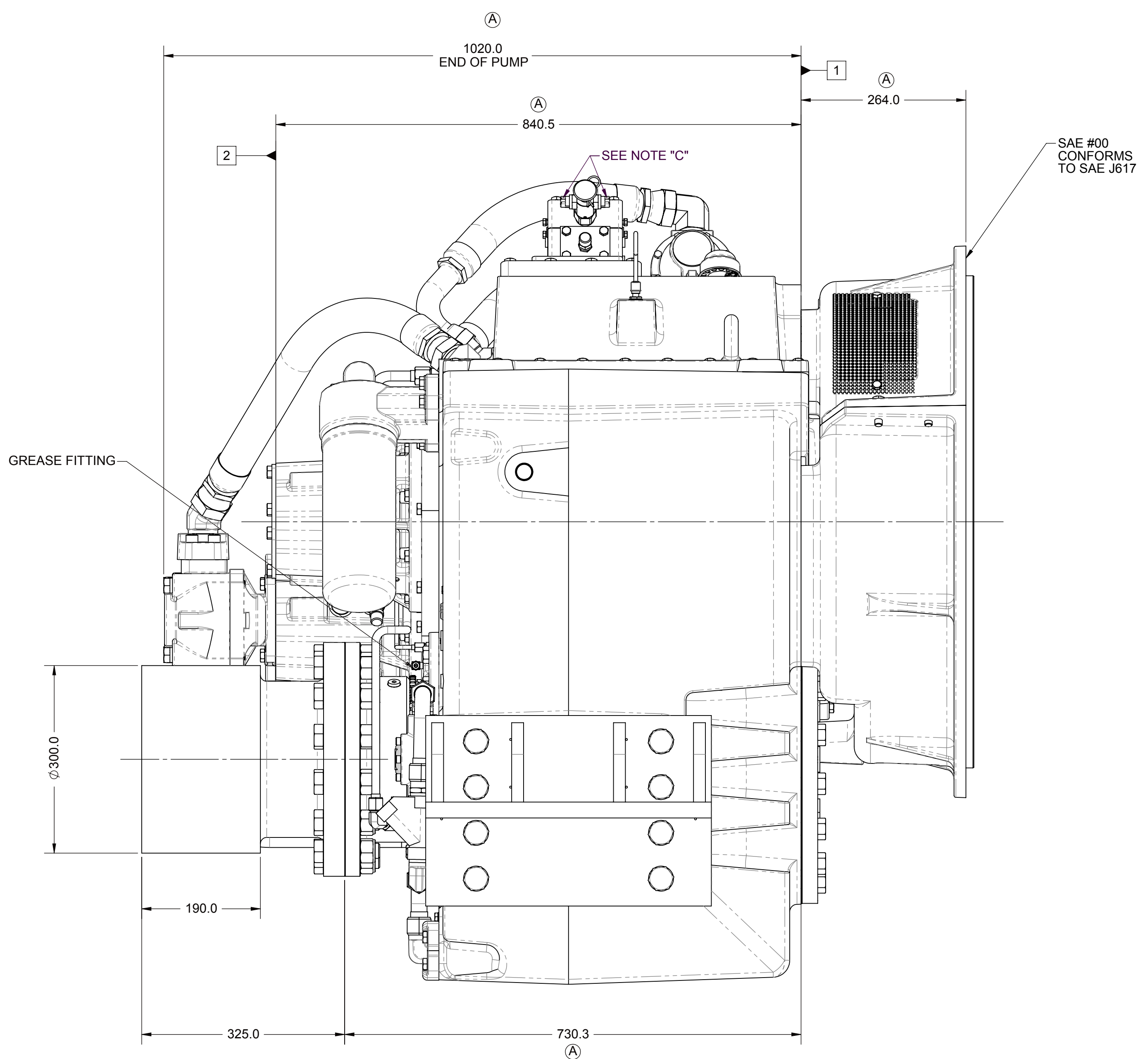
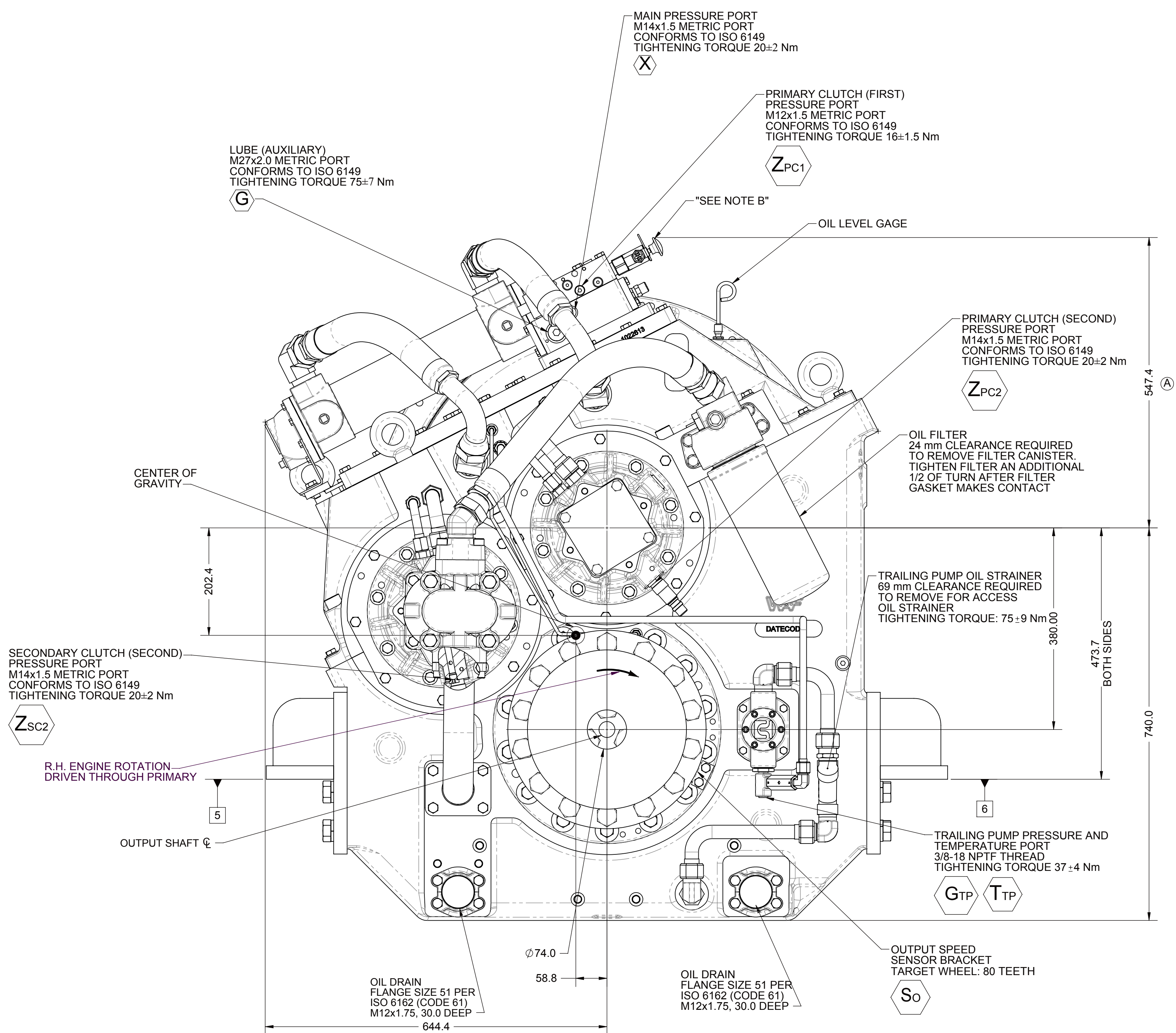
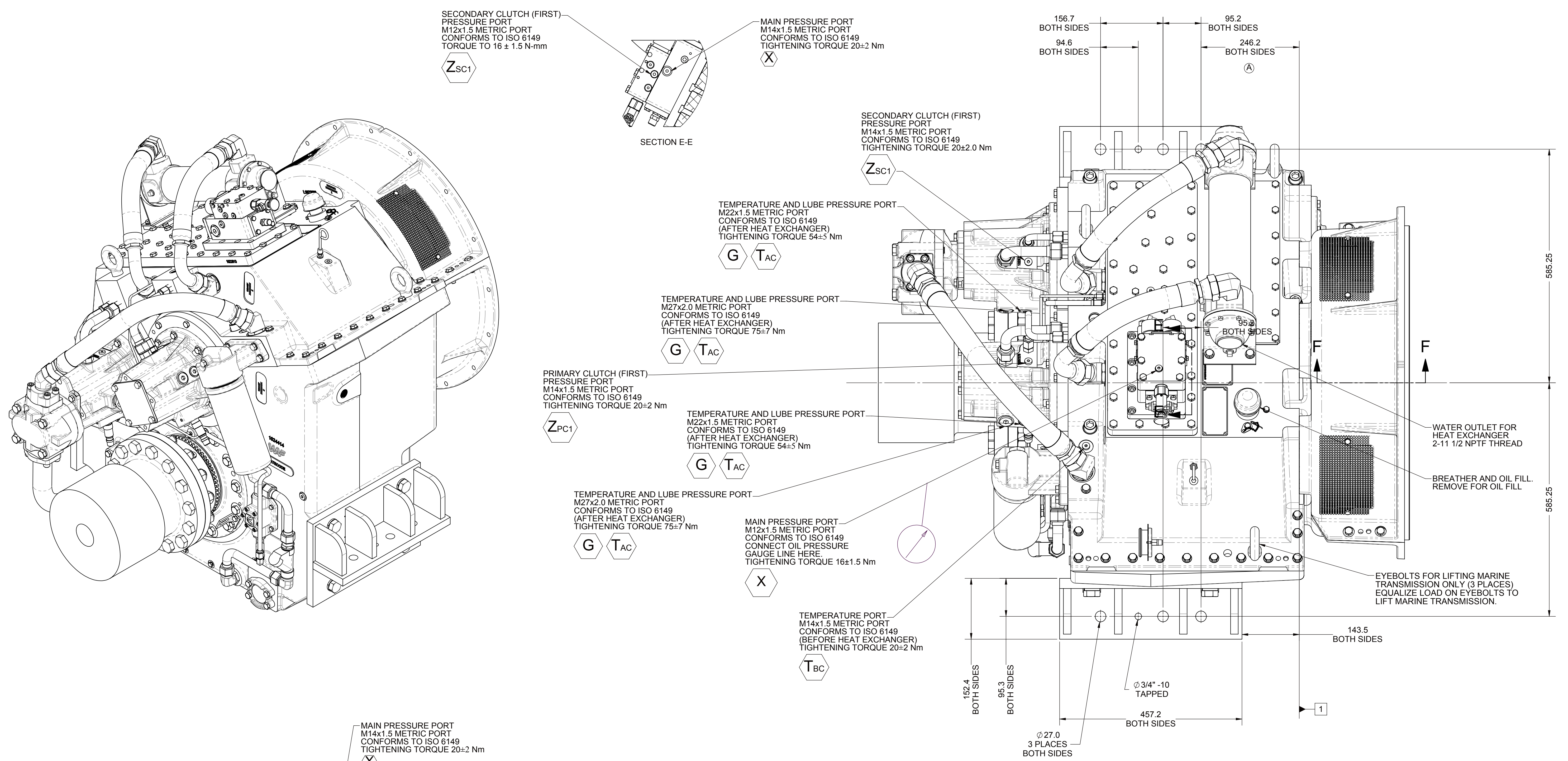
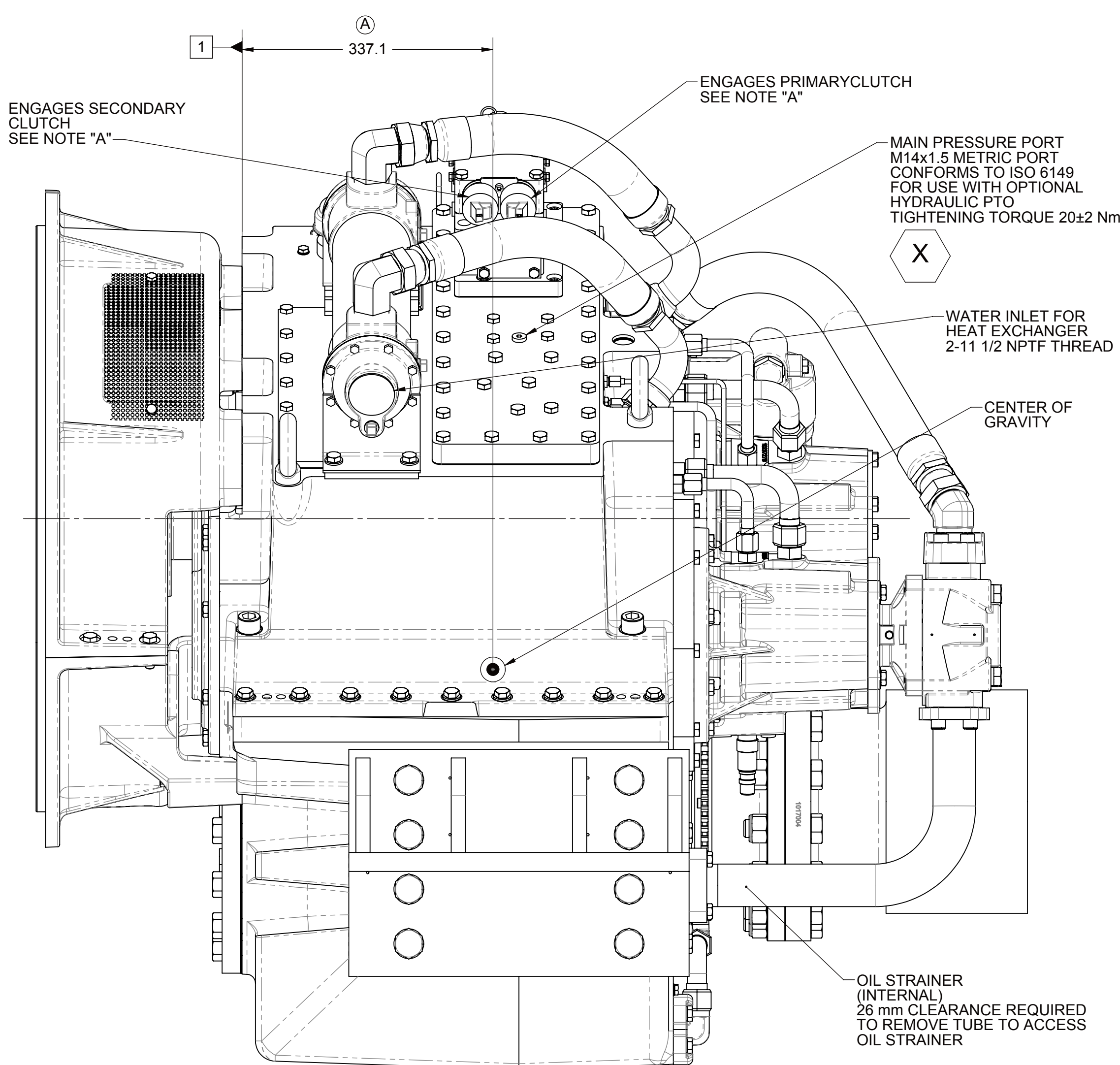
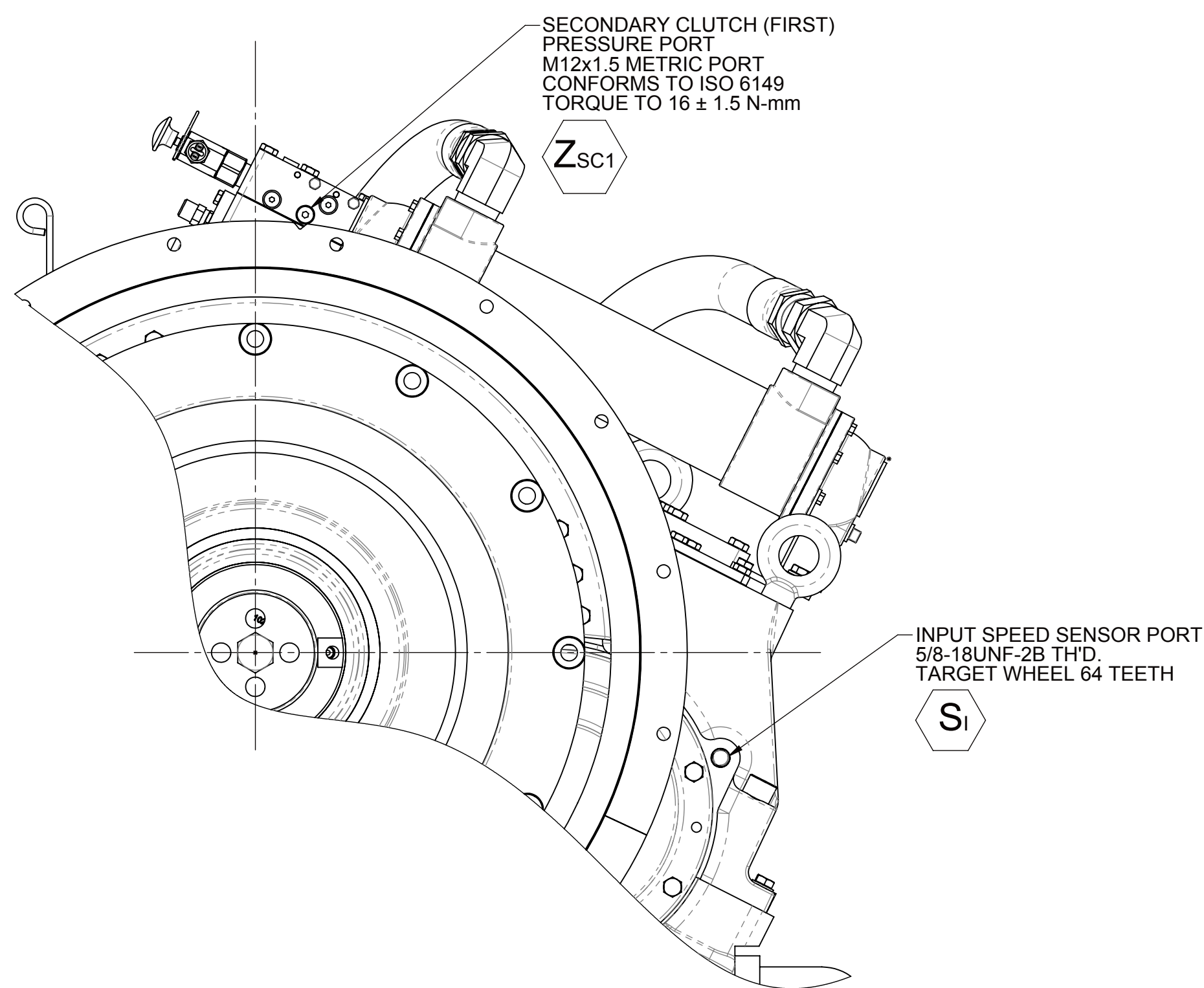
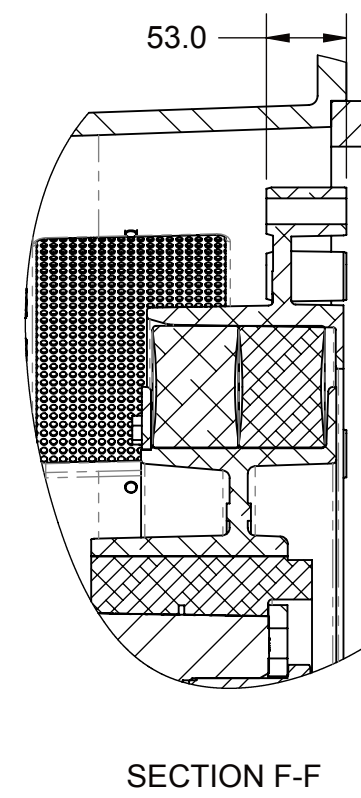


- A. PROPORTIONAL CONTROL VALVE OPERATION
 - 1. WARNING DO NOT CONNECT VALVE COIL DIRECTLY TO BATTERY/POWER SUPPLY VOLTAGE.
 - 2. OPERATION TO BE PERFORMED WITH ONLY TWIN DISC CONTROL SYSTEMS OR MODULES.
- B. MANUAL DIRECTIONAL CONTROL VALVE OPERATION
 - 1. WITH MANUAL DIRECTIONAL CONTROL VALVE IN CENTERED POSITION, PUSH TO ENGAGE SECONDARY CLUTCH.
 - 2. WITH MANUAL DIRECTIONAL CONTROL VALVE IN CENTERED POSITION, PULL TO ENGAGE PRIMARY CLUTCH.
- C. MANUAL DIRECTIONAL CONTROL VALVE MODE SWITCH
 - 1. SWITCH IS NORMALLY CLOSED WHEN MANUAL DIRECTIONAL CONTROL VALVE IS IN THE CENTERED POSITION AND OPEN WHEN LEVER IS ACTUATED FROM CENTERED POSITION.
 - 2. CURRENT = 20 AMP MAX.
 - 3. FOR WIRING SCHEMATIC, REFER TO CONTROL MODULE DRAWING.
- D. REFERENCE 9930 FOR TWIN DISC REQUIREMENTS FOR PRESSURE AND TEMPERATURE ALARM LEVELS.



1	INPUT GROUP REFERENCE PLANE
2	PTO ADAPTER MOUNTING FACE
5	LEFT MOUNTING BRACKET FACE
6	RIGHT MOUNTING BRACKET FACE



EQUIPMENT SHOWN:

- (A) - MGX-61000SC PER 1024420 SERIES ASSEMBLIES
- SAE #00
- SAE 530 CENTA CF-R-520-HR
- GP VALVE WITH EC050 CONTROL MODULE
- M1959AQ RAW WATER HEAT EXCHANGER
- TRAILING PUMP
- 1017084 COMPANION FLANGE ASSEMBLY
- 1016428BQ MOUNTING BRACKET

APPLICABLE MODELS:
MGX-61000SC PER 1024420 SERIES ASSEMBLIES

FIRST USE ASSEMBLY: 1024200		REV: 2073.02A		DATE: 06/26/2014	
FIRST USE MODEL: MGX-61000SC		UNLESS OTHERWISE SPECIFIED		DATE: 06/26/2014	
SUBJECT TO: 1024771B		DRAWING NO.		SCALE	
 THIRD ANGLE PROJECTION		DRAWN BY:		RACINE, WI 53403 - USA	
 METRIC		CHECKED BY:		1024771D	
<p>NOTES: THIS FIRST CONSTRUCTION INSPECTORIAL INFORMATION AND IS NOT TO BE USED FOR ANY OTHER PURPOSES WITHOUT THE WRITTEN CONSENT OF TWIN DISC, INCORPORATED</p> <p>THIS DRAWING IS THE PROPERTY OF TWIN DISC, INCORPORATED AND IS LOANED TO YOU. IT IS TO BE KEPT IN YOUR OFFICE AND IS NOT TO BE REPRODUCED OR COPIED IN ANY MANNER WITHOUT THE WRITTEN CONSENT OF TWIN DISC, INCORPORATED</p>		DESCRIPTION:		INSTALLATION	
<p>UNLESS OTHERWISE SPECIFIED</p> <p>ALL DIMENSIONS ARE IN INCHES</p> <p>ALL ANGLES AND TOLERANCES ARE IN DEGREES</p> <p>PER ASME Y14.5M</p>		<p>REVISIONS</p> <p>1.0</p>		MGX-61000SC	
<p>DATE: 06/26/2014</p> <p>SCALE:</p> <p>DRAWN BY:</p> <p>CHECKED BY:</p> <p>APPROVED BY:</p>		<p>DATE:</p> <p>SCALE:</p> <p>DRAWN BY:</p> <p>CHECKED BY:</p> <p>APPROVED BY:</p>		<p>DATE:</p> <p>SCALE:</p> <p>DRAWN BY:</p> <p>CHECKED BY:</p> <p>APPROVED BY:</p>	