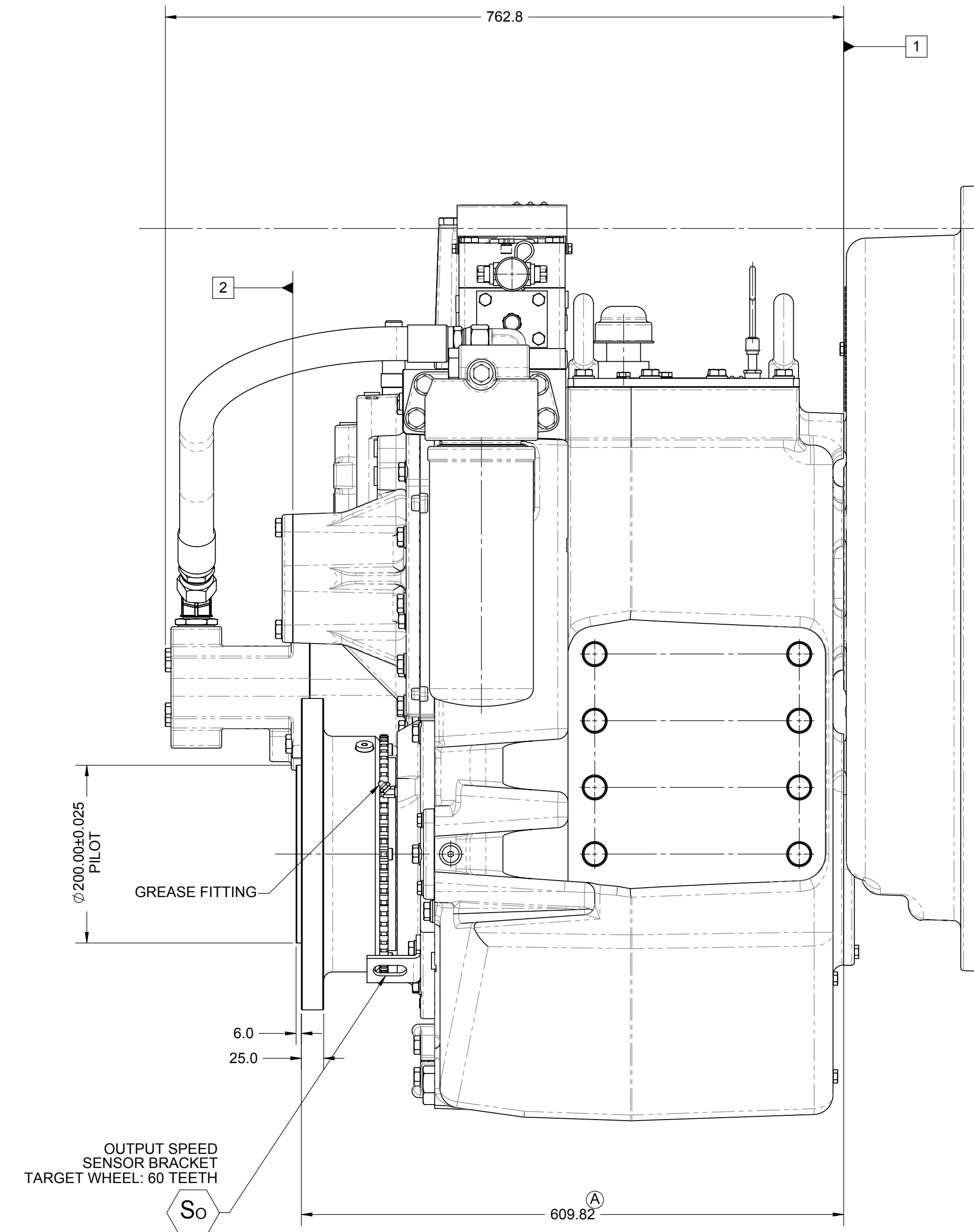
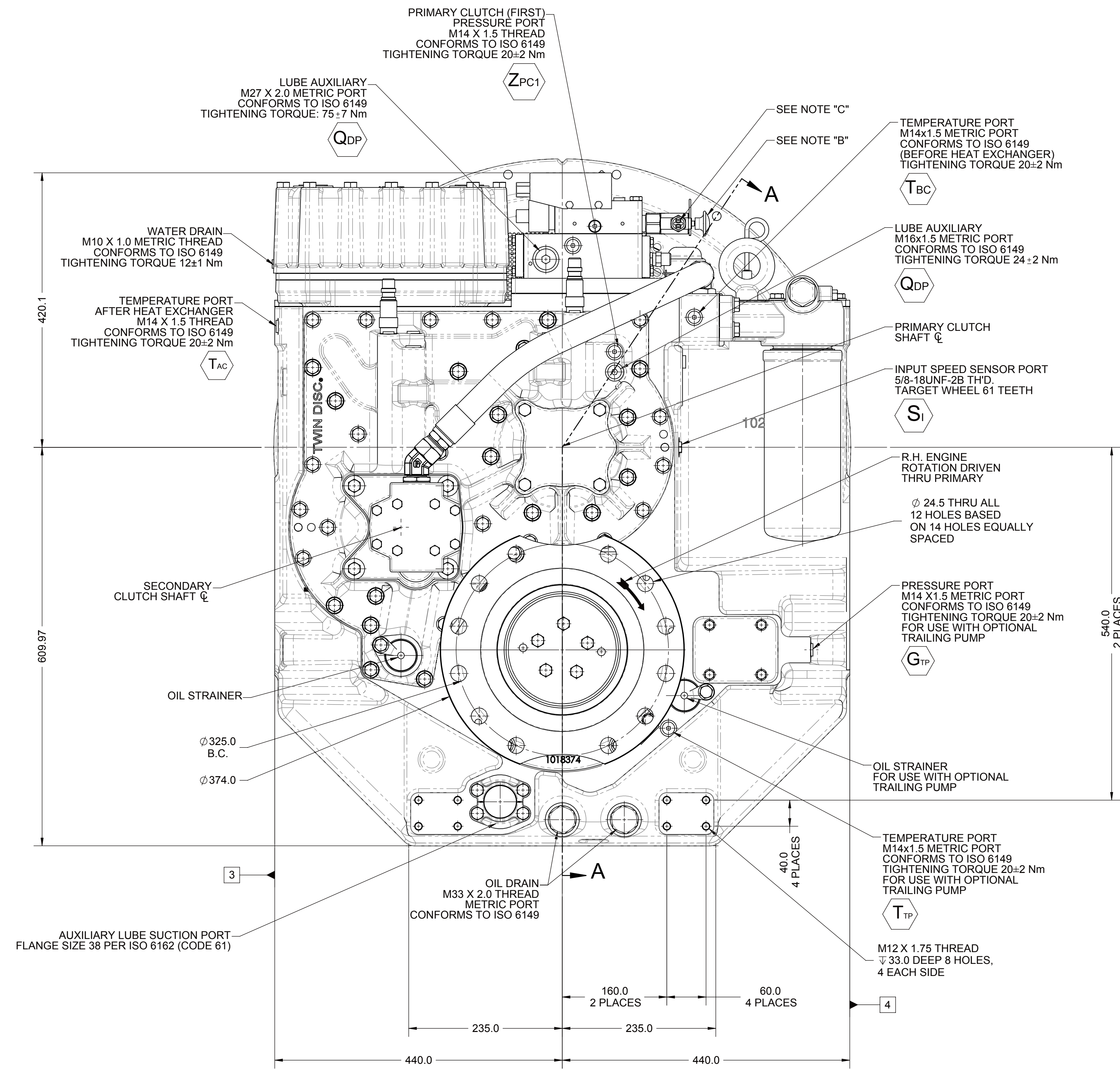
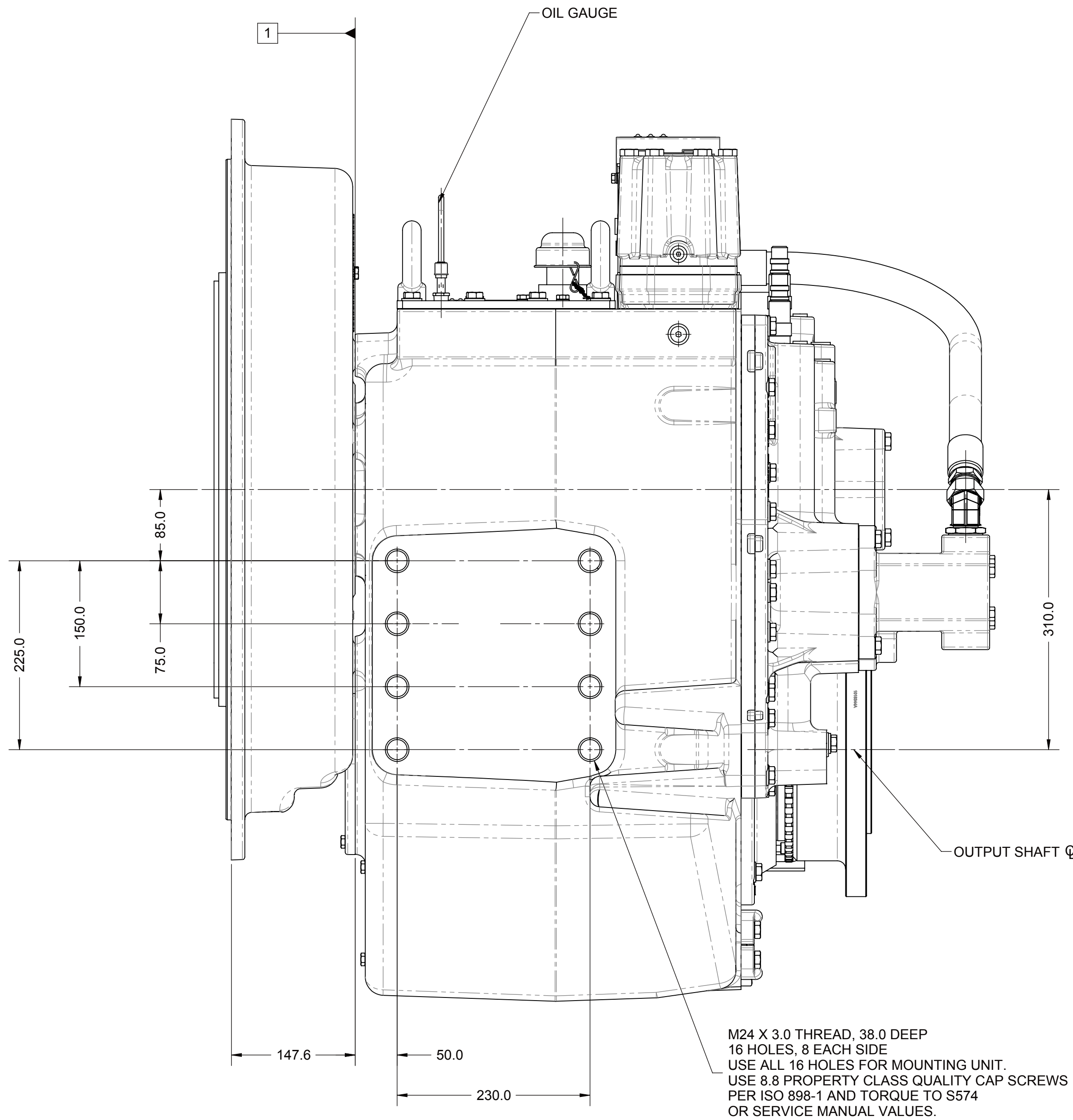
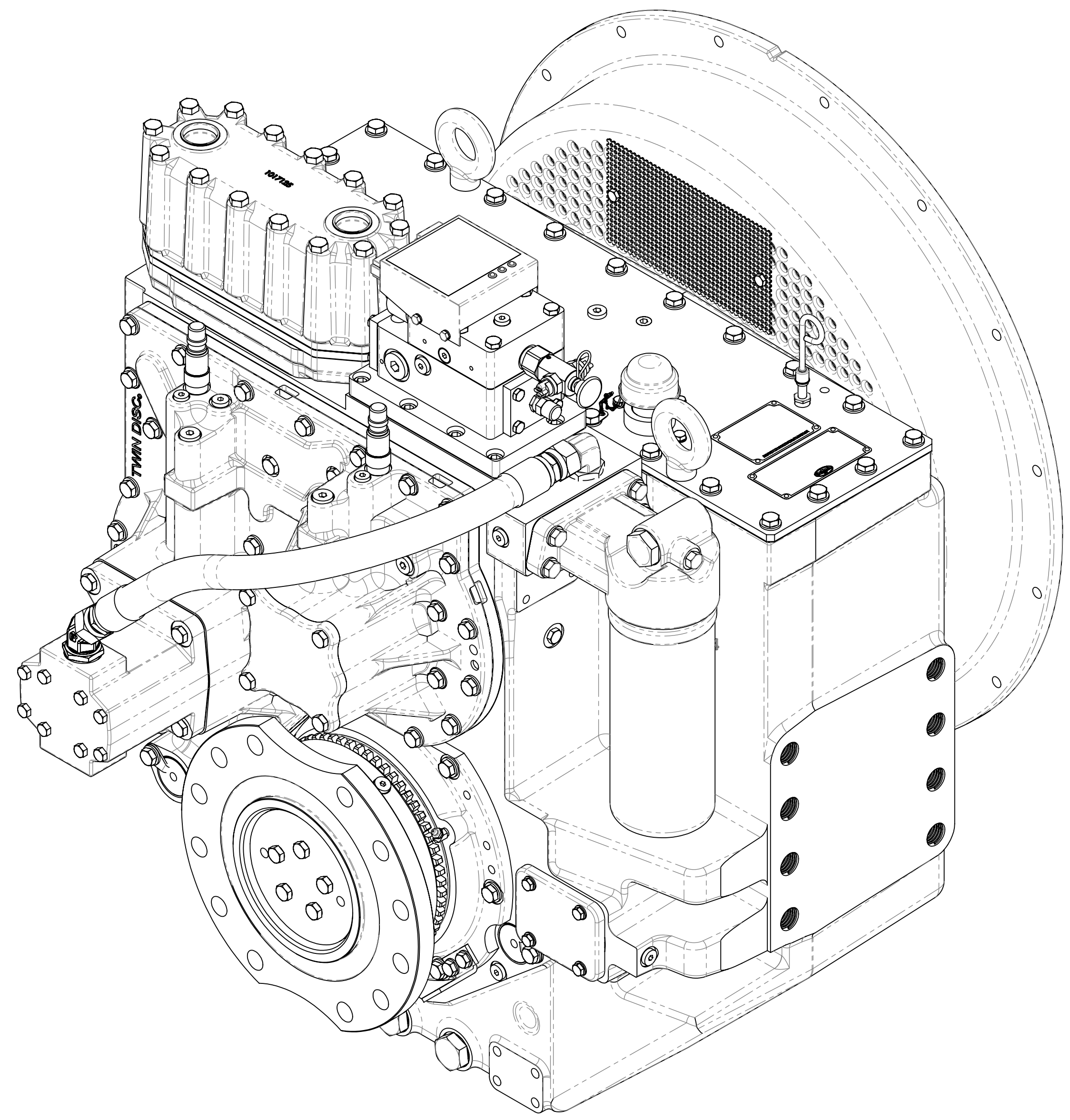
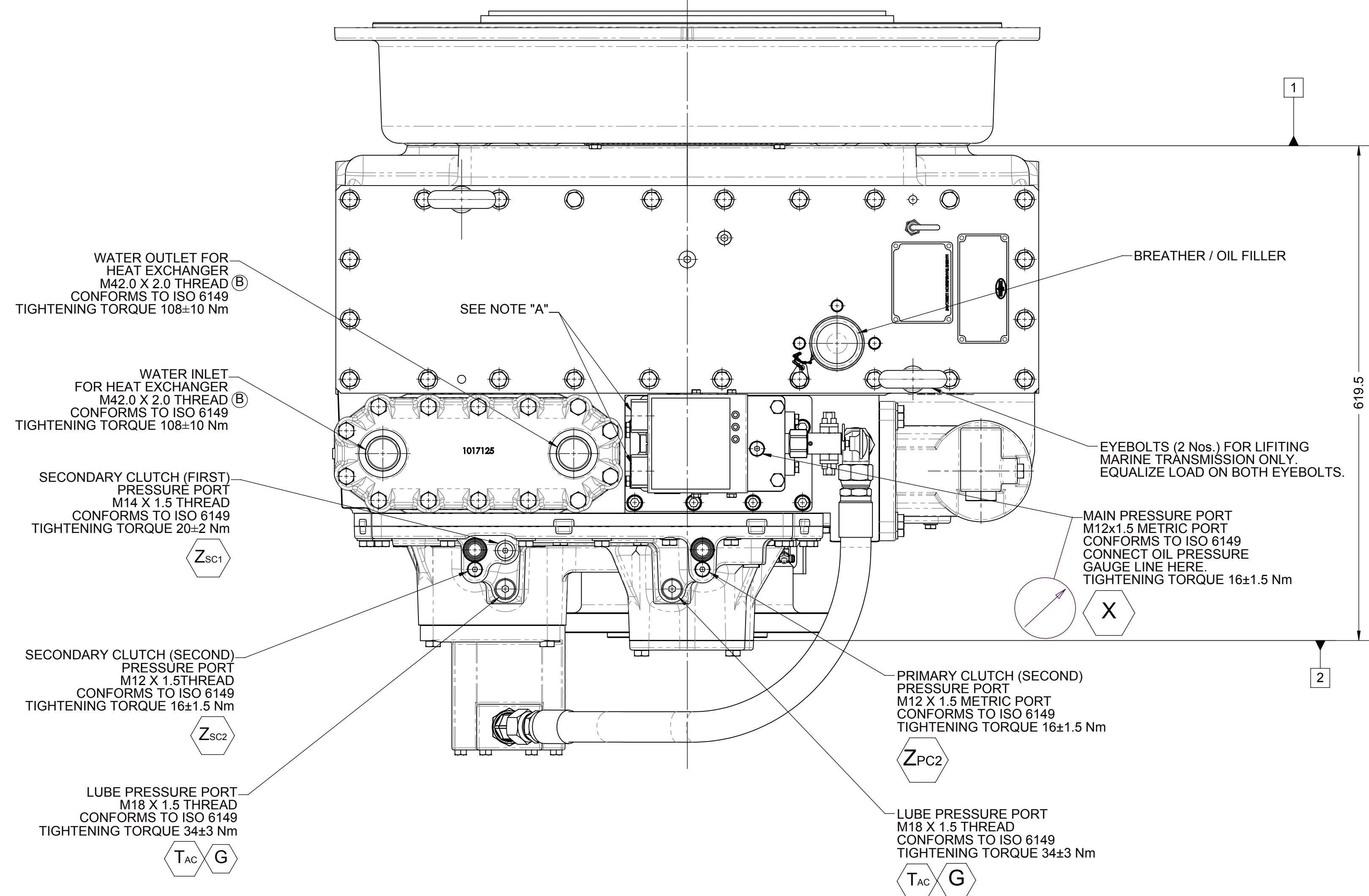
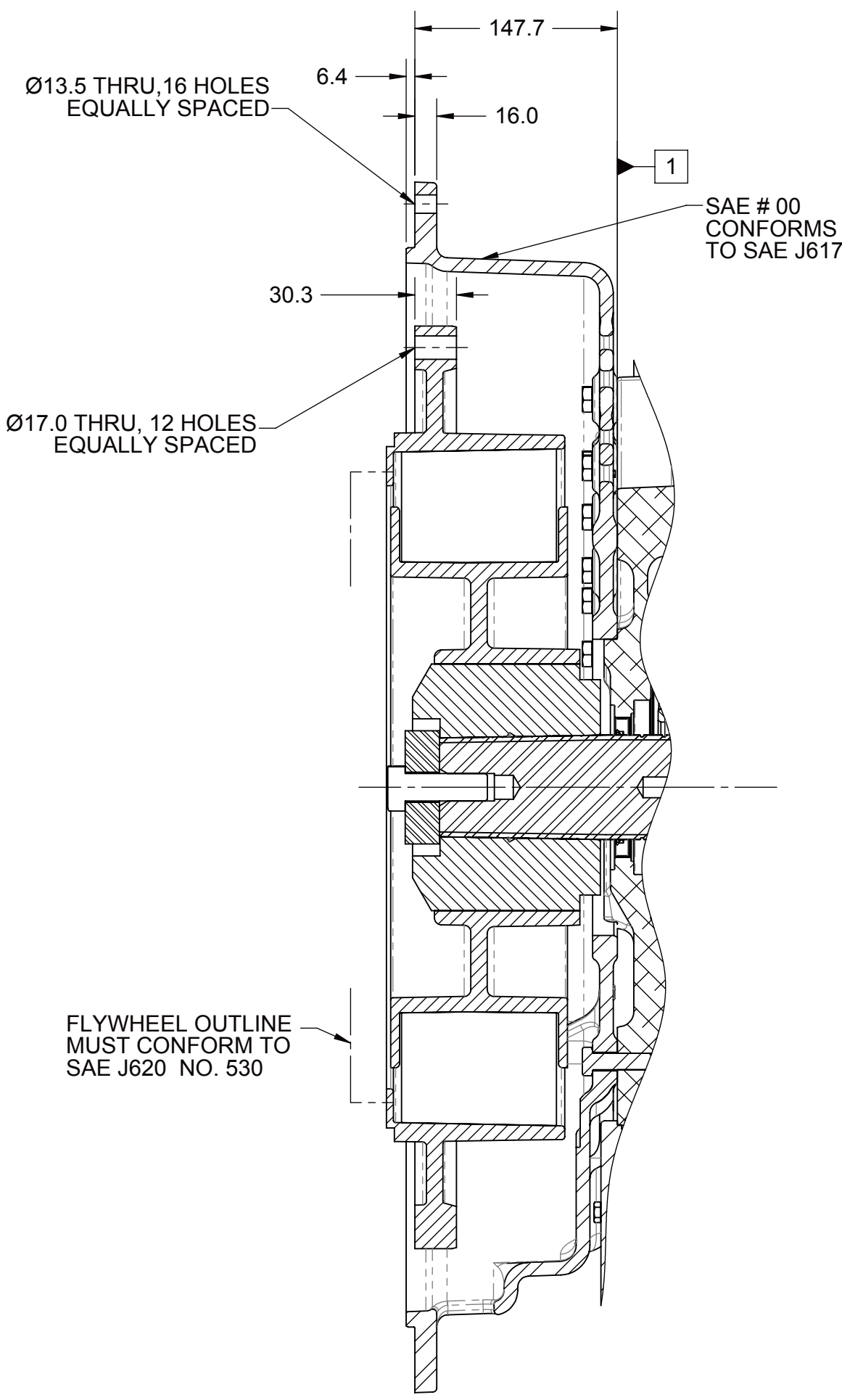


NOTES:

- A. PROPORTIONAL CONTROL VALVE OPERATION
1. WARNING - DO NOT CONNECT VALVE COIL DIRECTLY TO BATTERY/ POWER SUPPLY VOLTAGE.
 2. OPERATION TO BE PERFORMED WITH ONLY TWIN-DISC CONTROL SYSTEM MODULES.
- B. MANUAL DIRECTIONAL CONTROL VALVE OPERATION
1. WITH MANUAL DIRECTIONAL CONTROL VALVE IN CENTERED POSITION, PUSH TO ENGAGE PRIMARY CLUTCH.
 2. WITH MANUAL DIRECTIONAL CONTROL VALVE IN CENTERED POSITION, PULL TO ENGAGE SECONDARY CLUTCH.
- C. MANUAL DIRECTIONAL CONTROL VALVE MODE SWITCH
1. SWITCH IS NORMALLY CLOSED WHEN MANUAL DIRECTIONAL CONTROL VALVE IS IN CENTERED POSITION AND OPEN WHEN LEVER IS ACTUATED FROM CENTERED POSITION.
 2. CURRENT = 20 AMPS MAX.
 3. FOR WIRING SCHEMATIC, REFER TO CONTROL DRAWING.
- D. PRESSURE REGULATOR ADJUSTMENT:
1. REMOVE 1002144 CAP AND LOOSEN 1002145 NUT.
 2. CLOCKWISE ROTATION OF 1020939A PISTON INCREASES PRESSURE. COUNTER CLOCKWISE DECREASES PRESSURE.
 3. LOCK PISTON IN PLACE USING JAM NUT AND REPLACE CAP.

- 1 INPUT GROUP REFERENCE PLANE
- 2 PTO ADAPTER MOUNTING FACE
- 3 LEFT MOUNTING BRACKET FACE
- 4 RIGHT MOUNTING BRACKET FACE



NOTE: ALL POINTS AVAILABLE FOR TESTING ARE CODED

EQUIPMENT SHOWN:

- SAE #00
- SAE 530 CENTA CF-R
- GP VALVE WITH E0501 MODULE
- FRESH WATER HEAT EXCHANGER

APPLICABLE MODELS:

- MGX-6690SC PER 1020674
- MGX-6648SC PER 1020675

FIRST USE ASSEMBLY:	WEIGHT:	THIRD ANGLE PROJECTION	MATERIAL:	DATE:
FIRST USE MODEL:	NO.:	SCALE:	HEAT TREAT:	11/01/2011
SIMILAR TO:	NO.:	1:4		
DRAWN BY: NK			CHECKED BY: ALC	DATE: 11/01/2011
TWIN DISC, INCORPORATED			APPROVED BY: ALC	DATE: 11/01/2011
THIS NOTE IS THE PROPERTY OF TWIN DISC, INC. AND IS LOANED TO YOU BY TWIN DISC, INC. IT IS TO BE USED ONLY FOR THE PURPOSES SPECIFIED HEREIN. IT IS NOT TO BE REPRODUCED OR TRANSMITTED IN ANY FORM OR BY ANY MEANS, ELECTRONIC OR MECHANICAL, INCLUDING PHOTOCOPYING, RECORDING, OR BY ANY INFORMATION STORAGE AND RETRIEVAL SYSTEM.			DESCRIPTION: INSTALLATION MGX-6690SC/MGX-6648SC	
TWIN DISC, INCORPORATED			SHEET: 1 OF 1	

1025142F

1025142F

1025142F

1025142F

1025142F