

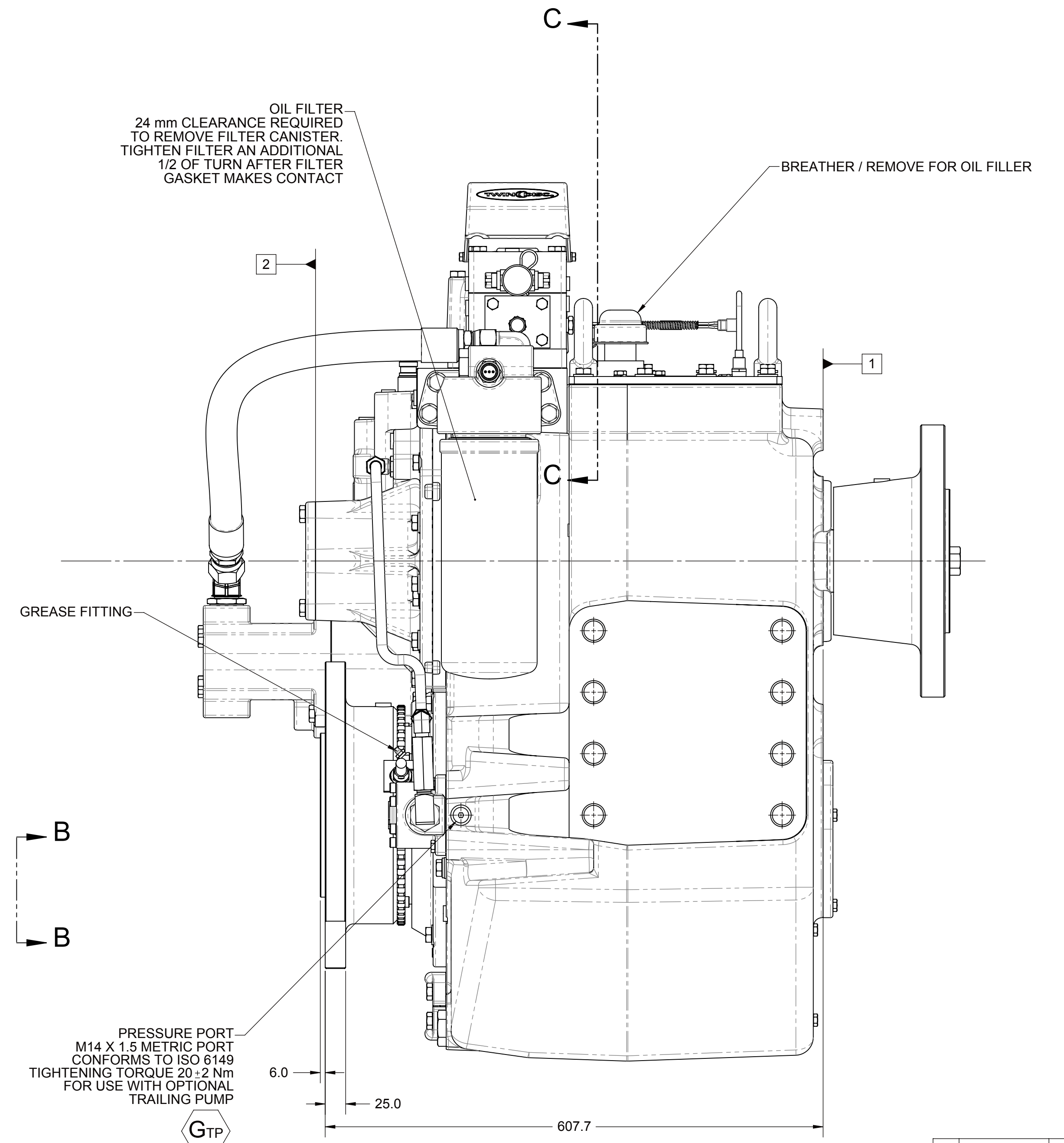
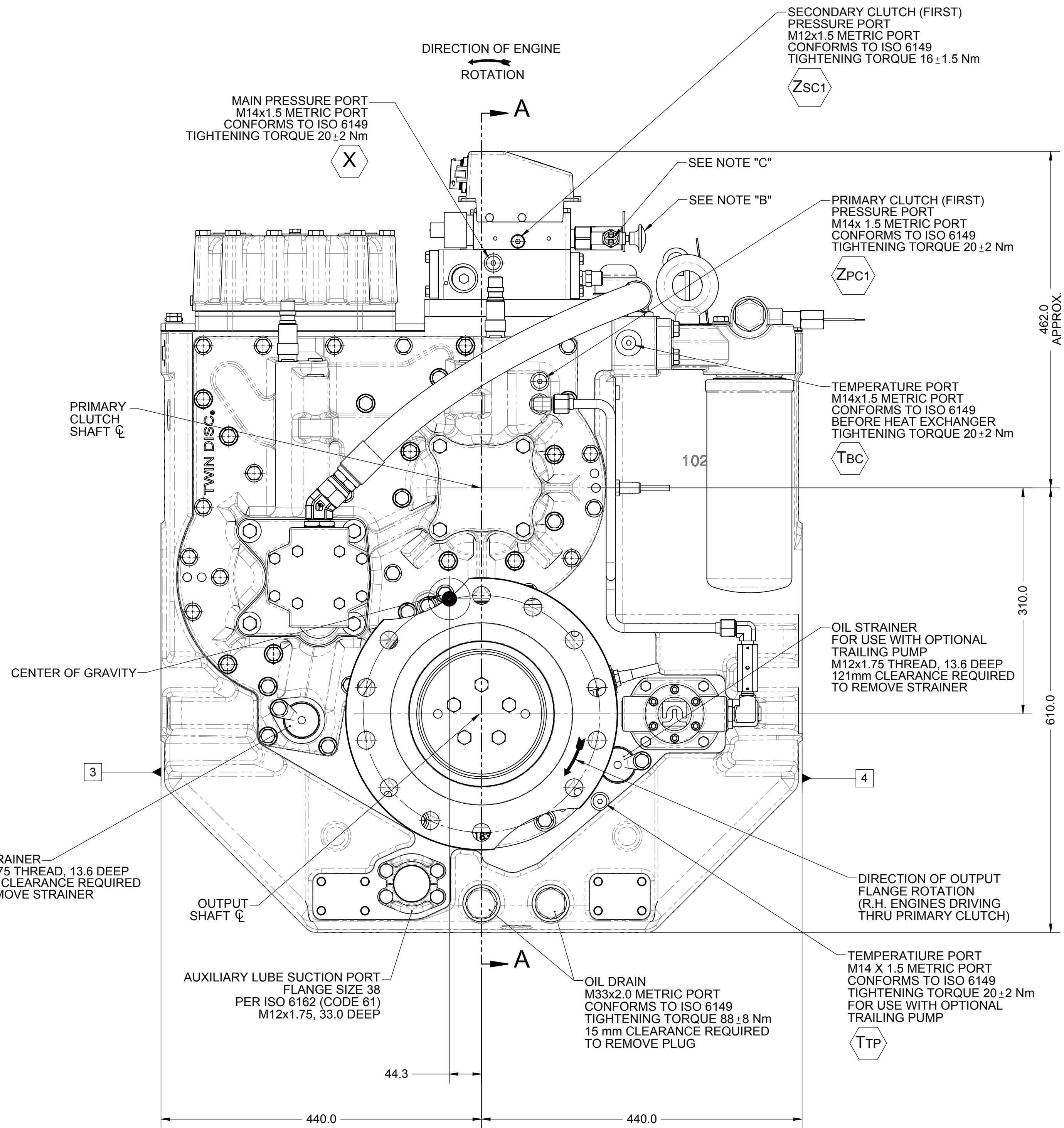
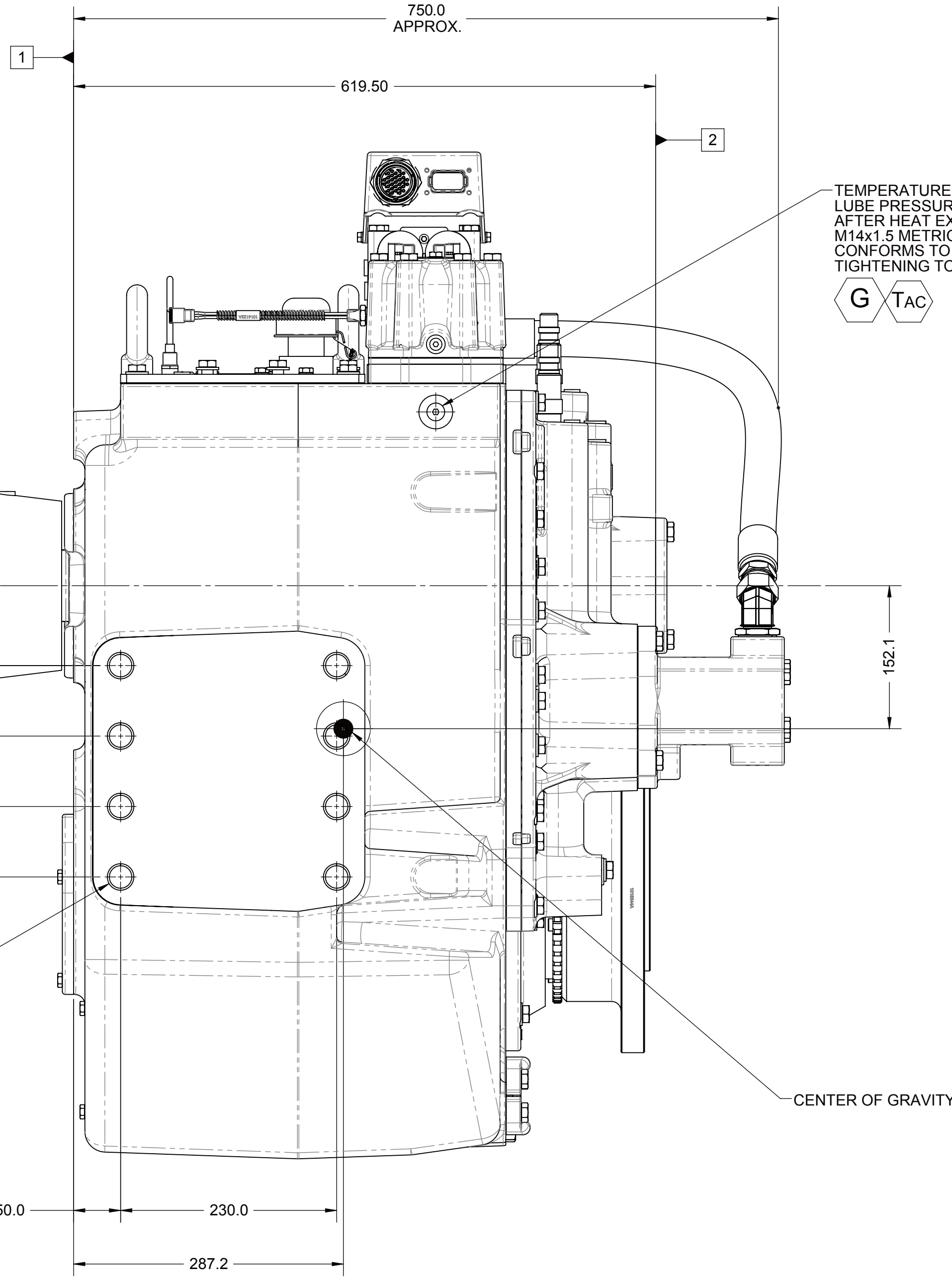
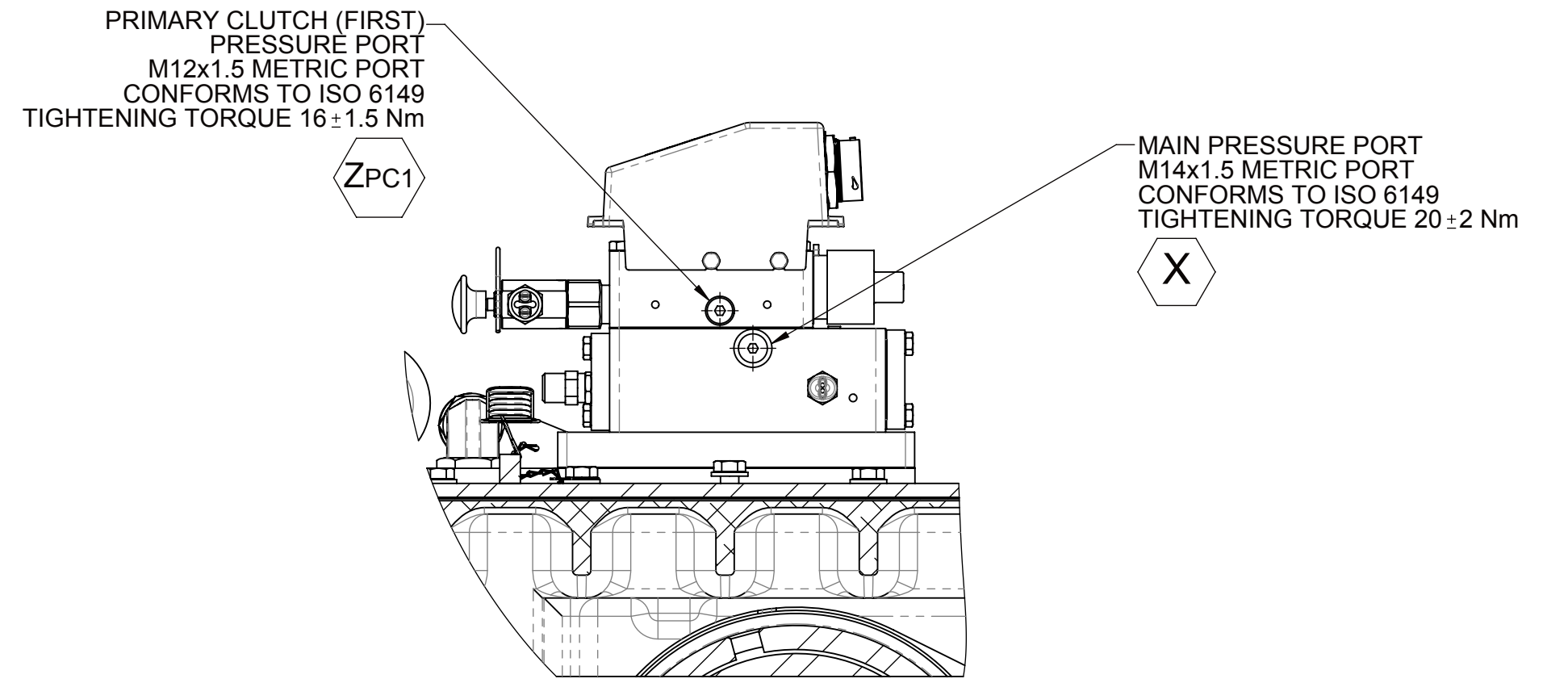
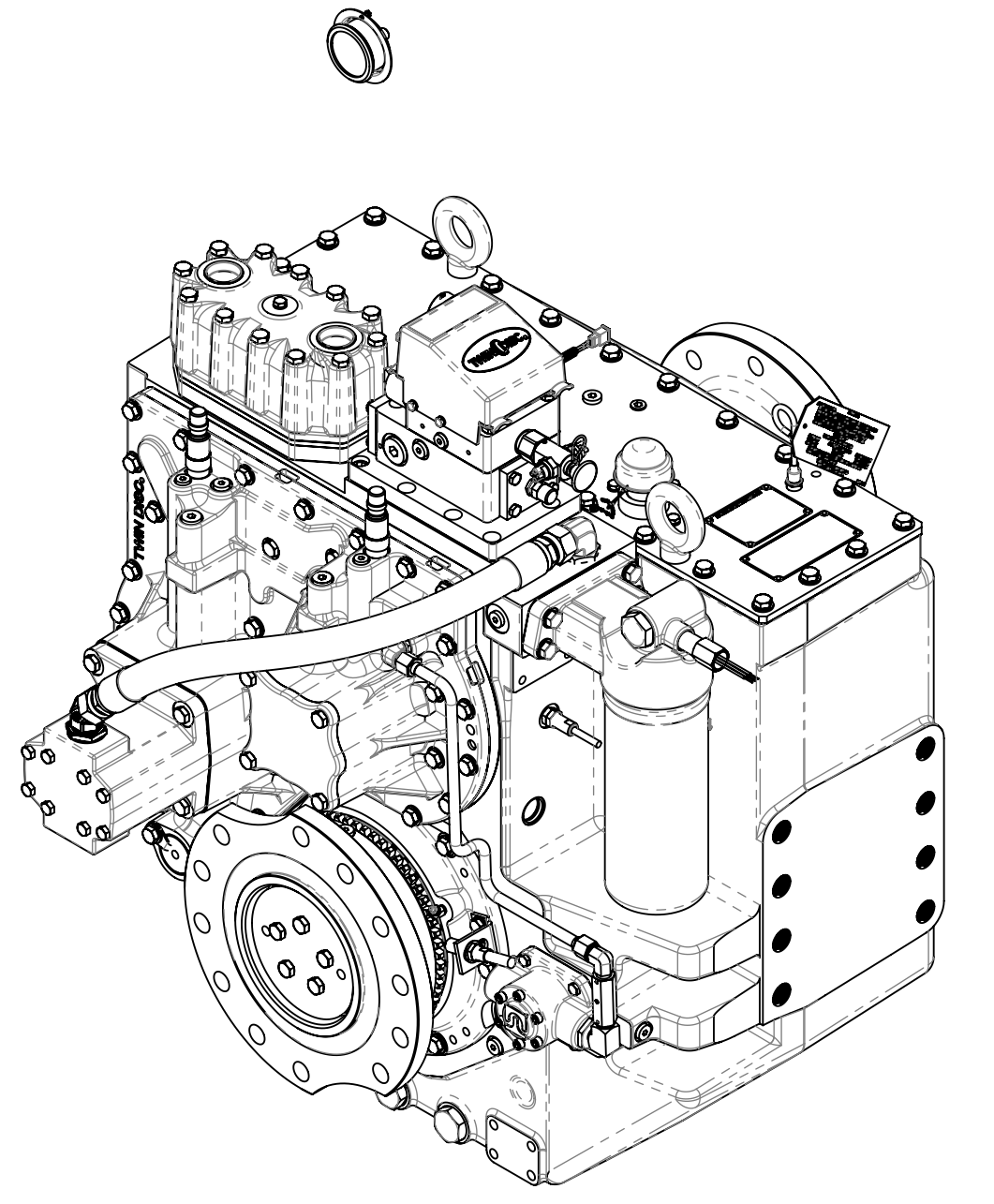
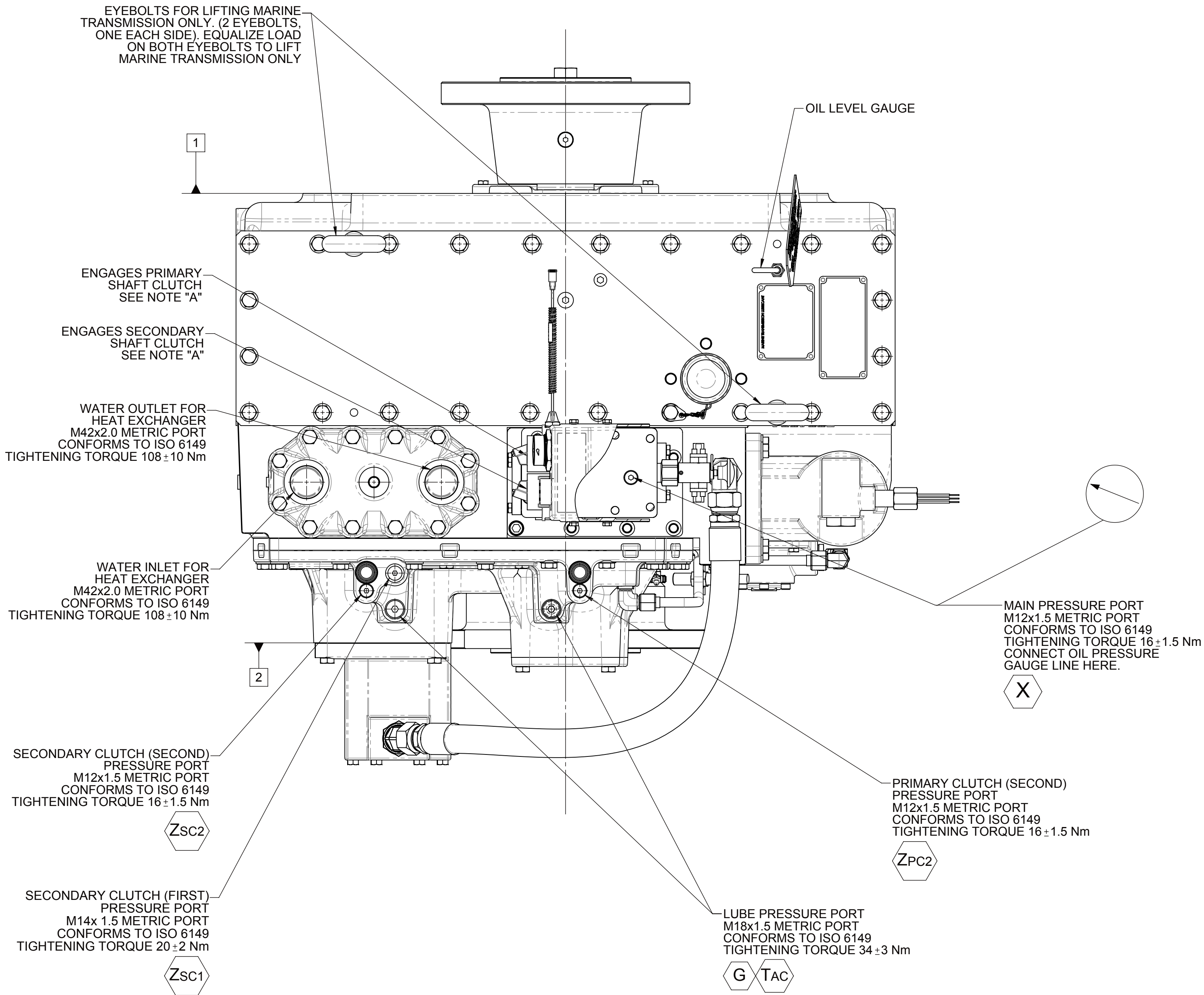
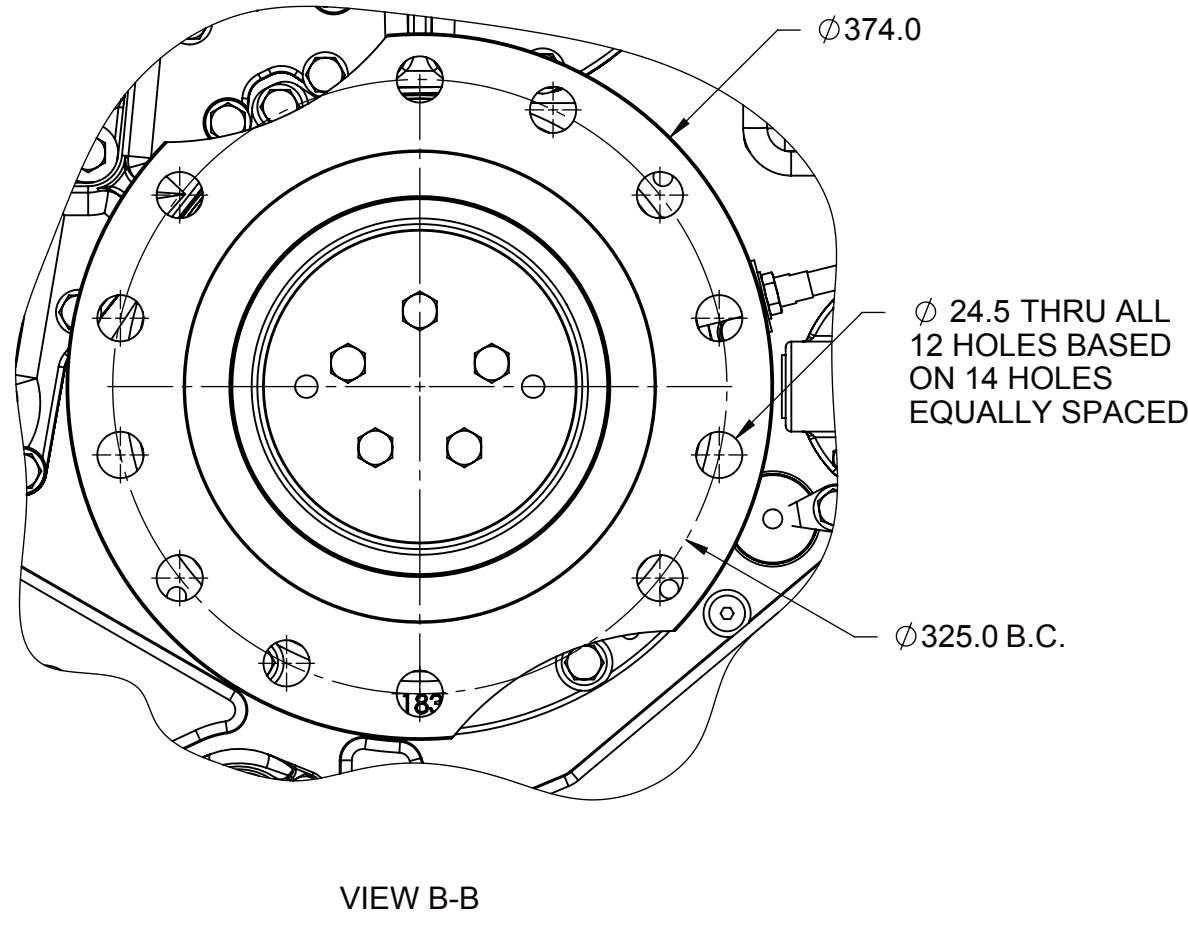
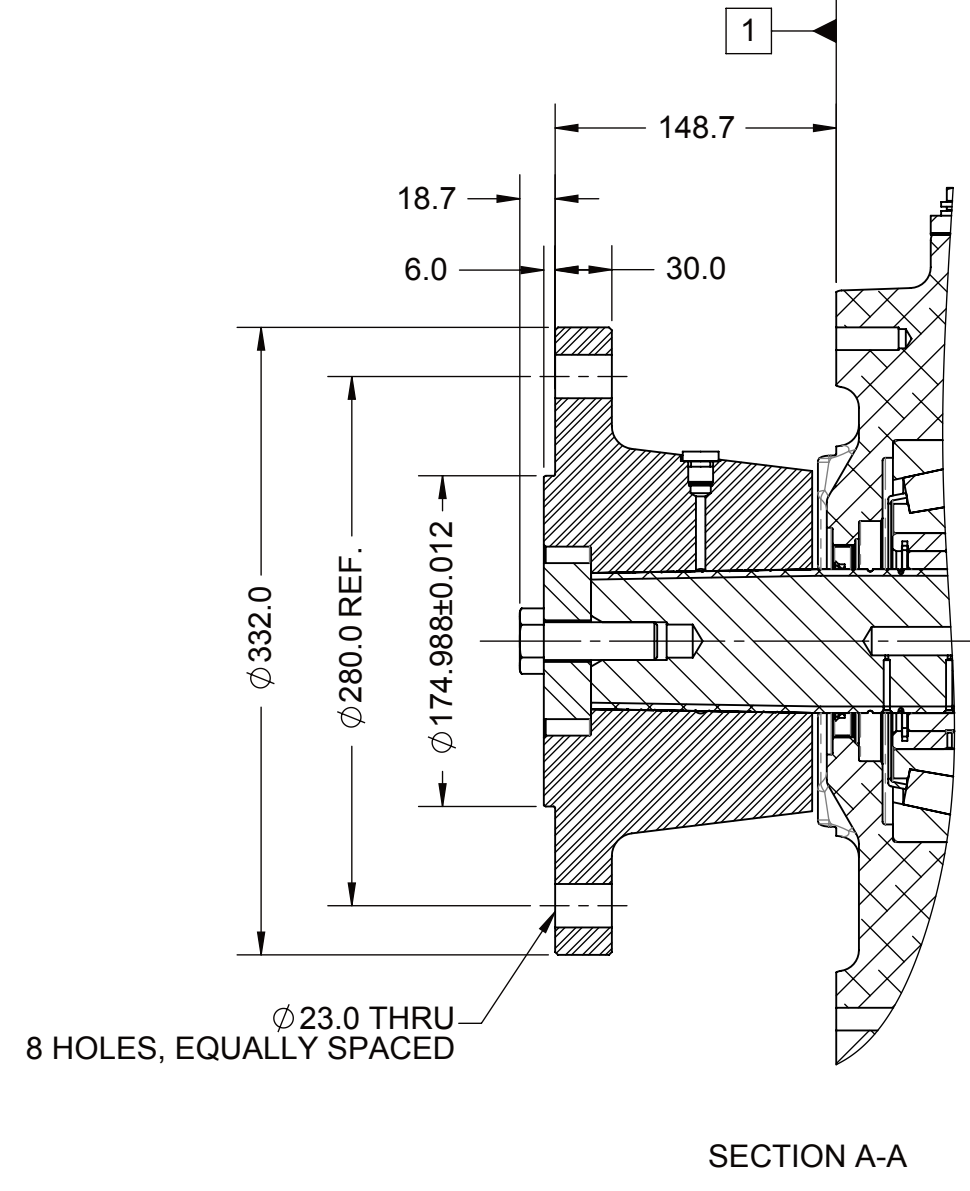
NOTES:

- A. PROPORTIONAL CONTROL VALVE OPERATION
1. WARNING - DO NOT CONNECT VALVE COIL DIRECTLY TO BATTERY/ POWER SUPPLY VOLTAGE.
2. OPERATION TO BE PERFORMED WITH ONLY TWIN-DISC CONTROL SYSTEMS OR MODULES.
- B. MANUAL DIRECTIONAL CONTROL VALVE OPERATION
1. WITH MANUAL DIRECTIONAL CONTROL VALVE IN CENTERED POSITION, PUSH TO ENGAGE PRIMARY CLUTCH.
2. WITH MANUAL DIRECTIONAL CONTROL VALVE IN CENTERED POSITION, PULL TO ENGAGE SECONDARY CLUTCH
- C. MANUAL DIRECTIONAL CONTROL VALVE MODE SWITCH
1. SWITCH IS NORMALLY CLOSED WHEN MANUAL DIRECTIONAL CONTROL VALVE IS IN CENTERED POSITION AND OPEN WHEN LEVER IS ACTUATED FROM CENTERED POSITION.
2. CURRENT = 20 AMPS MAX.
3. FOR WIRING SCHEMATIC, REFER TO CONTROL MODULE DRAWING.
- D. PRESSURE REGULATOR ADJUSTMENT
1. REMOVE 1002144 CAP AND LOOSEN 1002145 NUT.
2. CLOCKWISE ROTATION OF 1020539 PISTON INCREASES PRESSURE. COUNTER CLOCKWISE DECREASES PRESSURE.
3. LOCK PISTON IN PLACE USING JMM NUT AND REPLACE CAP.
- E. REFERENCE S930 FOR TWIN DISC REQUIREMENTS FOR PRESSURE AND TEMPERATURE ALARM LEVELS.
- F. ALL POINTS AVAILABLE FOR TESTING ARE CODED

- 1 INPUT GROUP REFERENCE PLANE
2 PTO ADAPTER MOUNTING FACE
3 LEFT MOUNTING BRACKET FACE
4 RIGHT MOUNTING BRACKET FACE

EQUIPMENT SHOWN:
- 1017768A FREESTANDING INPUT HUB
- 1020941L GP VALVE WITH EC300 HARNESS
- RAW WATER HEAT EXCHANGER
- STANDARD PUMP GROUP
- LESS COMPANION FLANGE

APPLICABLE MODELS:
MGX-6690SC PER ASSEMBLY 1020674 SERIES
MGX-6848SC PER ASSEMBLY 1020675 SERIES



FIRST USE ASSEMBLY 1020675 FIRST USE MODEL MGX-6848SC SIMILAR TO:		WEIGHT 954.55 lb INCHES 15.24 MILLIMETERS 393.7	THIRD ANGLE PROJECTION	MATERIAL	DATE 02/27/2015 SCALE 1:4 DRAWN BY MG CHECKED BY JMF APPROVED BY JMF	DESCRIPTION: INSTALLATION MGX-6690SC/MGX-6848SC	REVISIONS REV. CHANGE NO. DATE	1025142M SHEET 1 OF 1
---	--	---	------------------------	----------	--	--	-----------------------------------	--------------------------