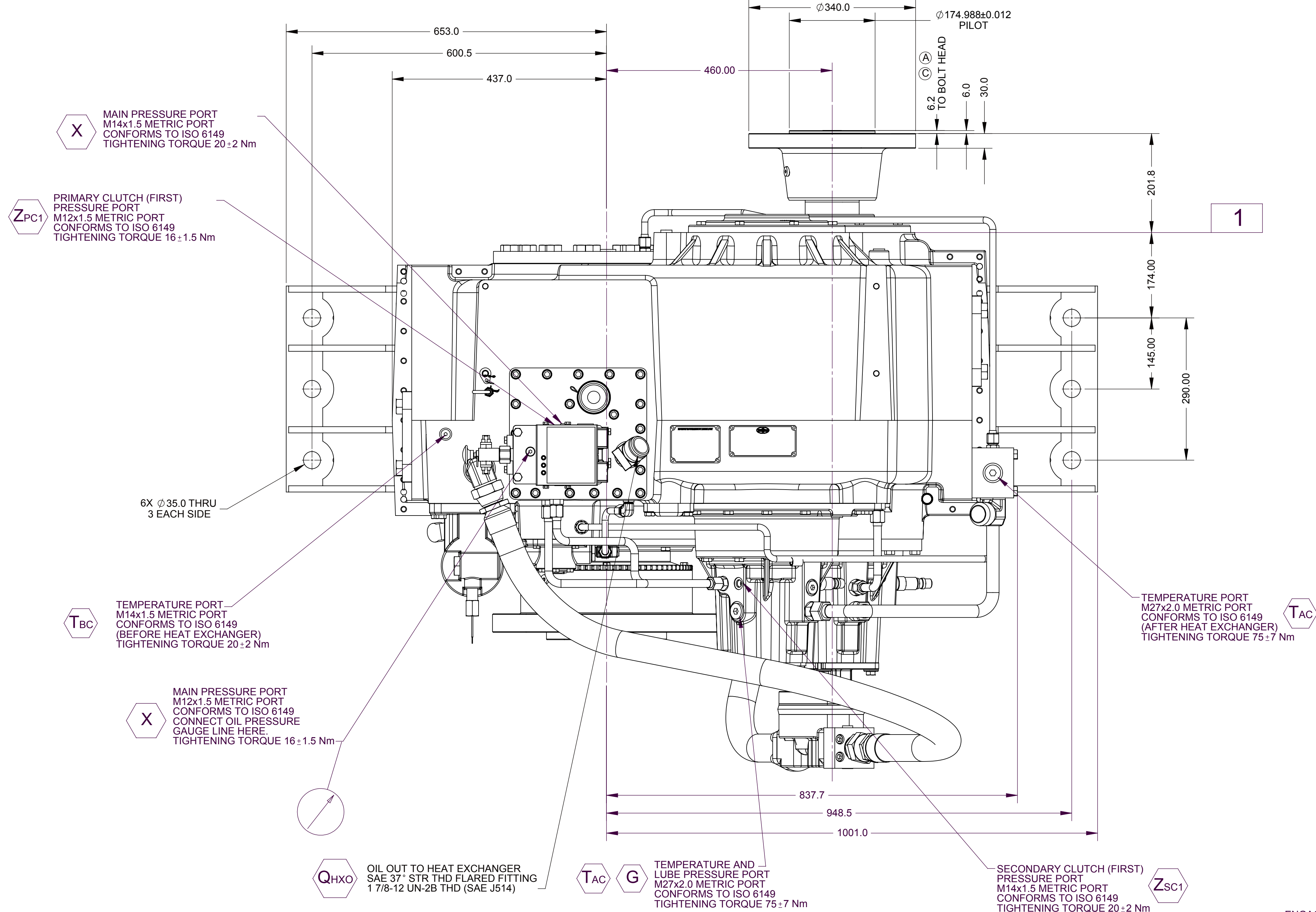


SECTION A-A



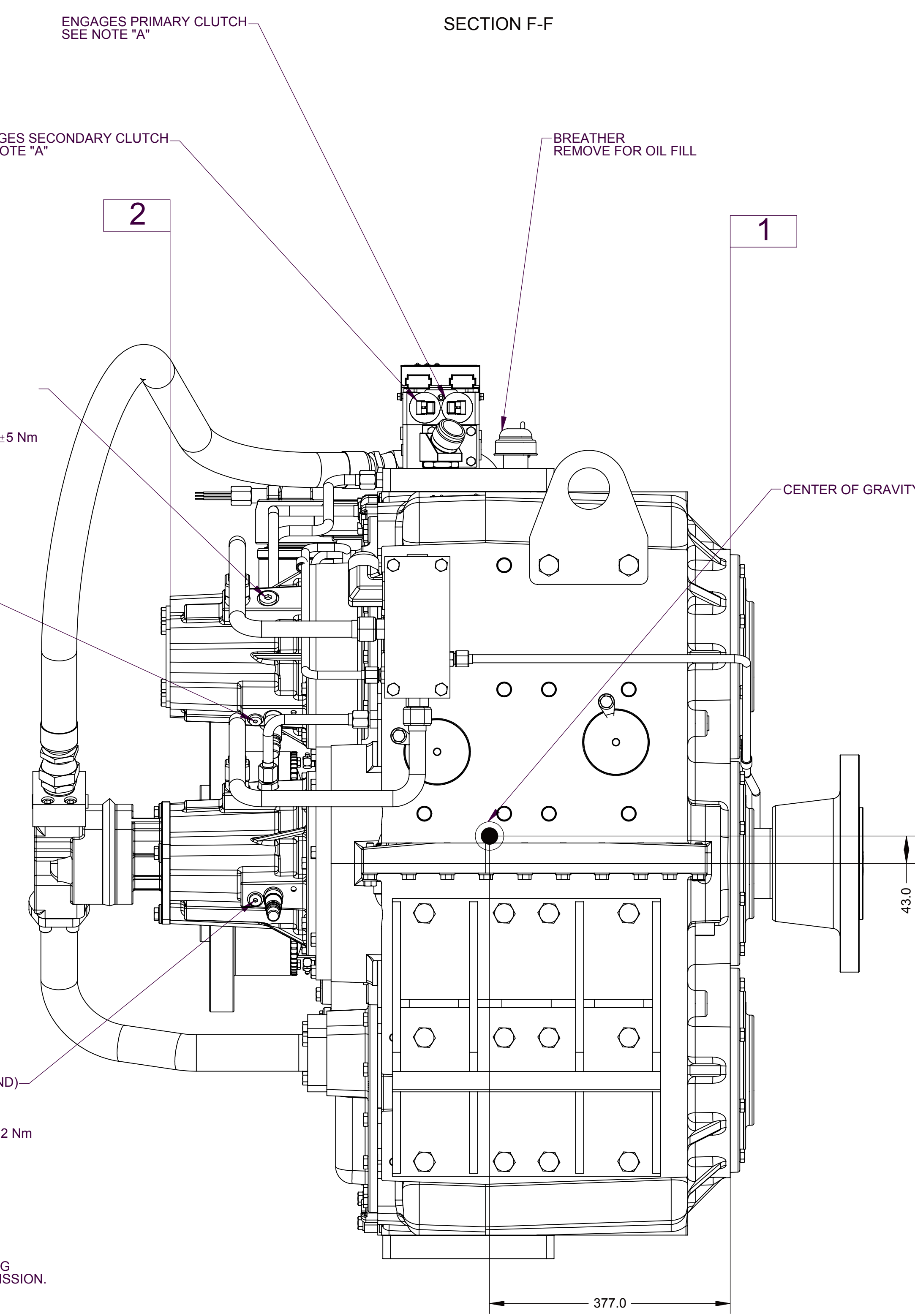
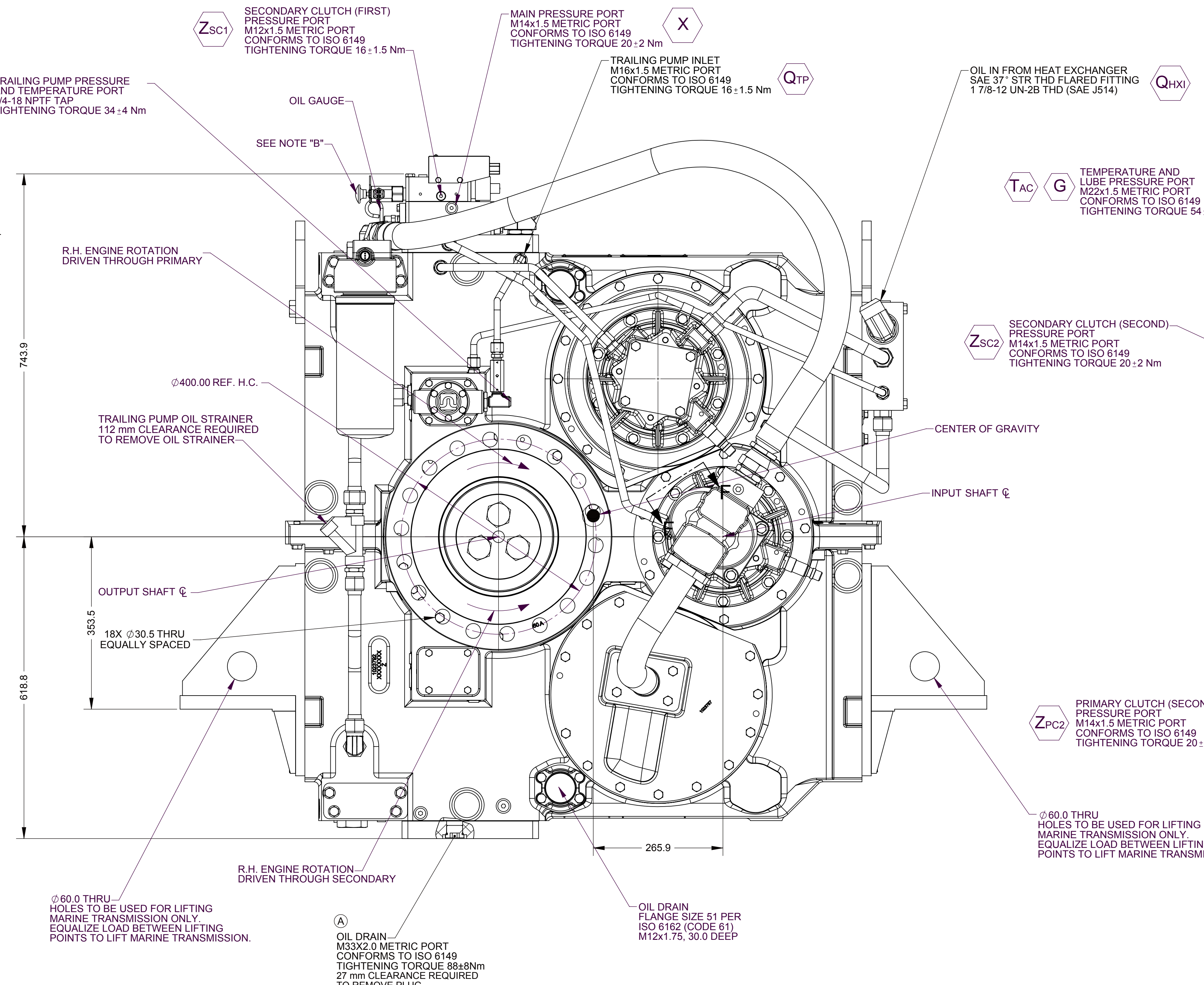
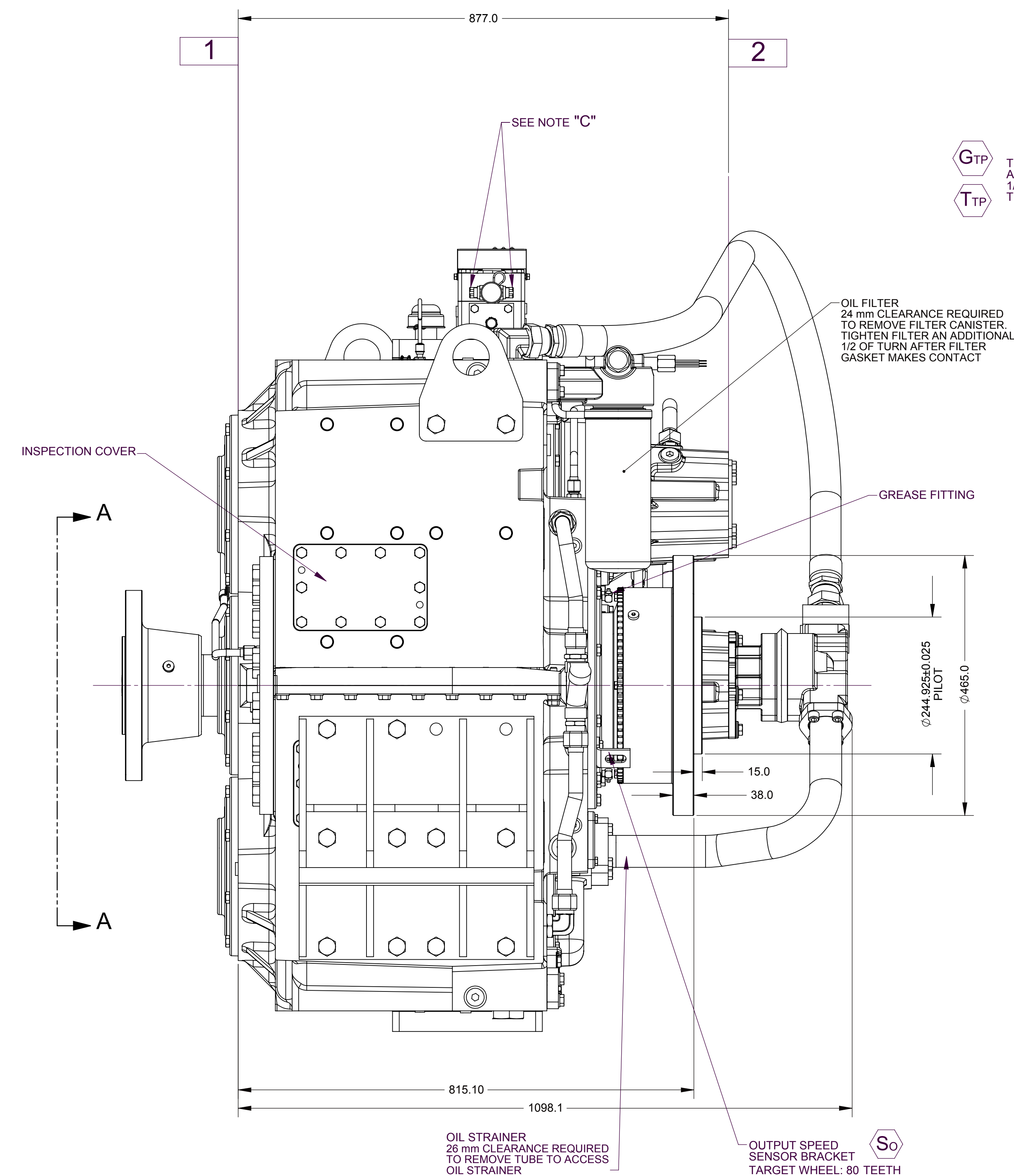
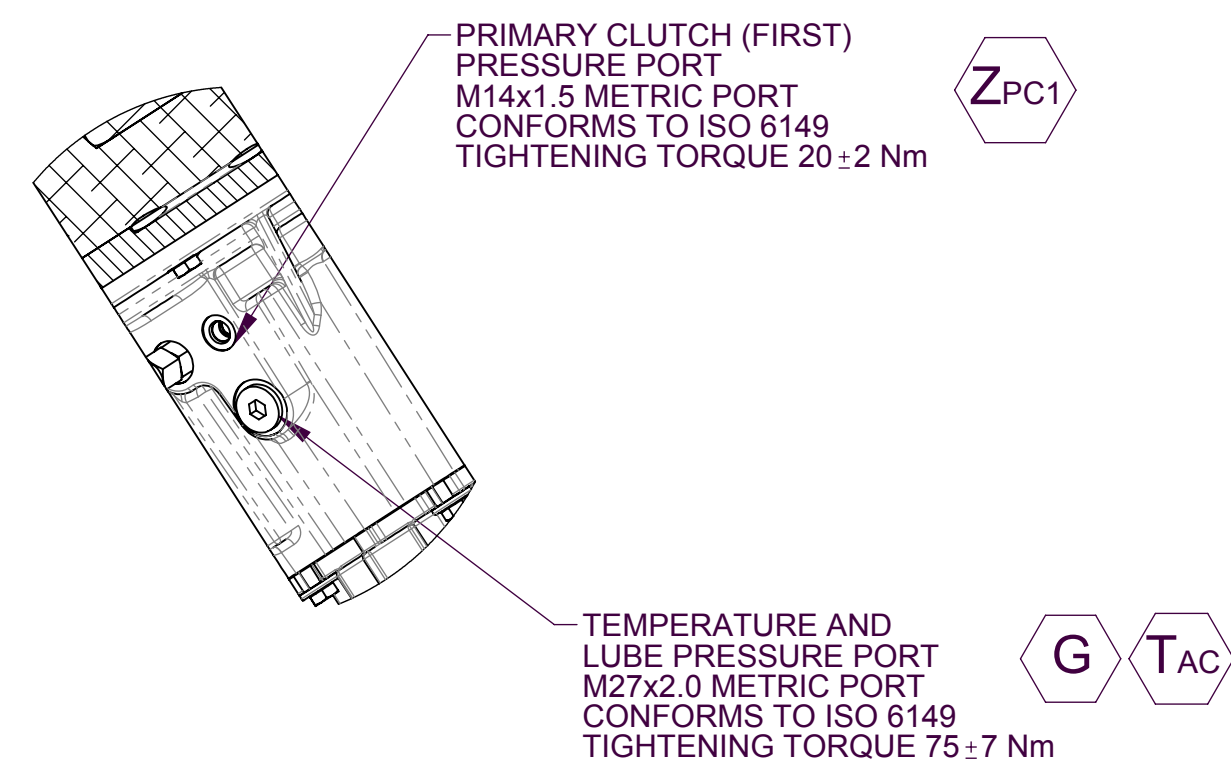
- NOTES:
- A. PROPORTIONAL CONTROL VALVE OPERATION
1. WARNING DO NOT CONNECT VALVE COIL DIRECTLY TO BATTERY/POWER SUPPLY VOLTAGE.
 2. OPERATION TO BE PERFORMED WITH ONLY TWIN DISC CONTROL SYSTEMS OR MODULES.
- B. MANUAL DIRECTIONAL CONTROL VALVE OPERATION
1. WITH MANUAL DIRECTIONAL CONTROL VALVE IN CENTERED POSITION, PUSH TO ENGAGE SECONDARY CLUTCH.
 2. WITH MANUAL DIRECTIONAL CONTROL VALVE IN CENTERED POSITION, PULL TO ENGAGE PRIMARY CLUTCH.
- C. MANUAL DIRECTIONAL CONTROL VALVE MODE SWITCH
1. SWITCH IS NORMALLY CLOSED WHEN MANUAL DIRECTIONAL CONTROL VALVE IS IN THE CENTERED POSITION AND OPEN WHEN LEVER IS ACTUATED FROM CENTERED POSITION.
 2. CURRENT = 20 AMP MAX.
 3. FOR WIRING SCHEMATIC, REFER TO CONTROL MODULE DRAWING.

- B. APPLICABLE MODELS:
- MGX-61500SC-HL PER ASSEMBLY 1023610
 - MGX-62000SC-HL PER ASSEMBLY 1026779

- EQUIPMENT SHOWN:
- FREE STANDING HUB 1023810D
 - GP VALVE WITH EC050 MODULE
 - TRAILING PUMP
 - 1016428AZ MOUNTING BRACKETS

1 INPUT GROUP REFERENCE PLANE

2 PTO ADAPTER MOUNTING FACE



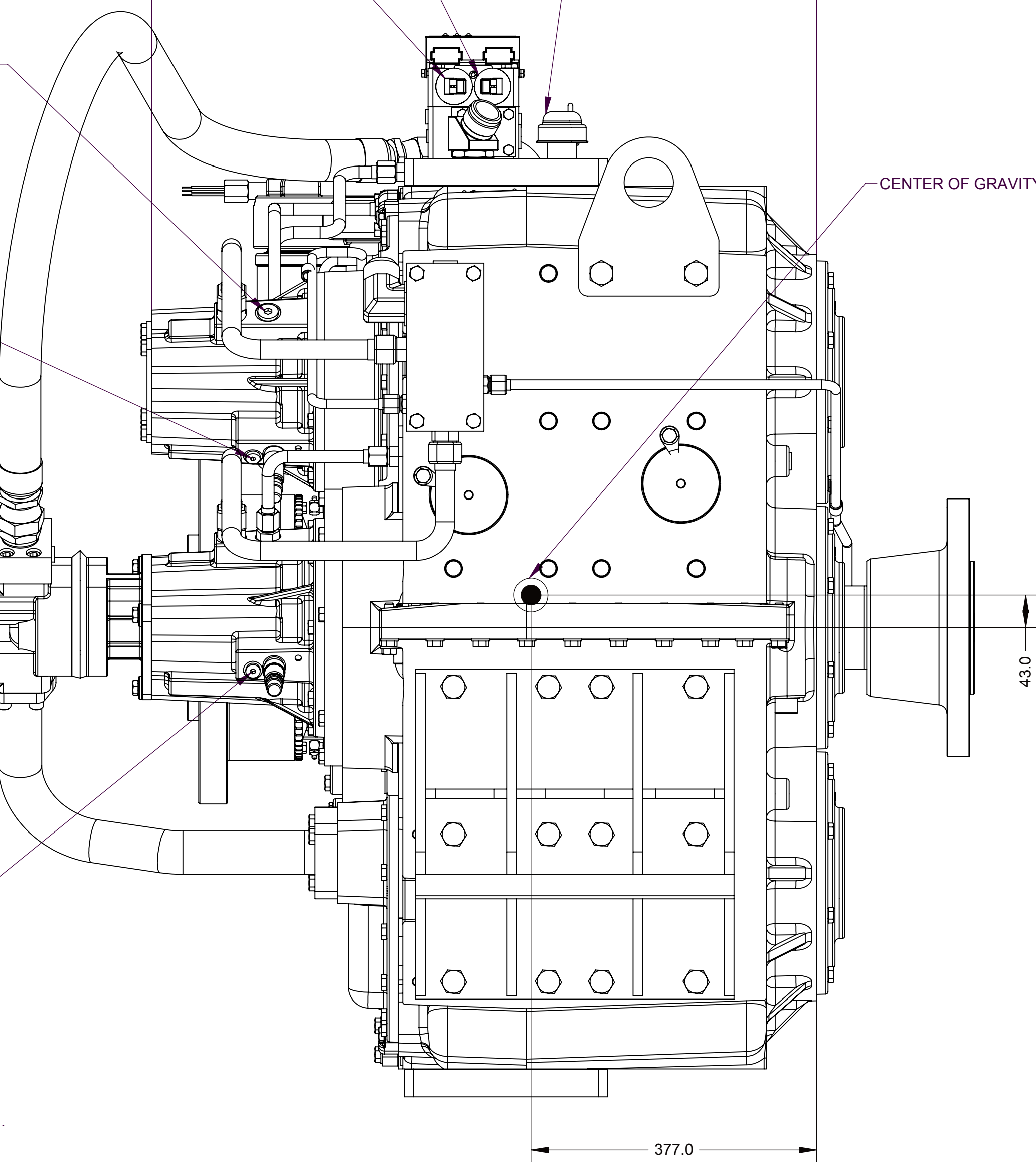
ENGAGES PRIMARY CLUTCH. SEE NOTE "A"

ENGAGES SECONDARY CLUTCH. SEE NOTE "A"

SECTION F-F

2

1



1

2

3

4

5

6

7

8

9

10

11

12

13

14

15

16

17

18

19

20

21

22

23

24

25

26

27

28

29

30

31

32

33

34

35

36

37

38

39

40

41

42

43

44

45

46

47

48

49

50

51

52

53

54

55

56

57

58

59

60

61

62

63

64

65

66

67

68

69

70

71

72

73

74

75

76

77

78

79

80

81

82

83

84

85

86

87

88

89

90

91

92

93

94

95

96

97

98

99

100

101

102

103

104

105

106

107

108

109

110

111

112

113

114

115

116

117

118

119

120

121

122

123

124

125

126

127

128

129

130

131

132

133

134

135

136

137

138

139

140

141

142

143

144

145

146

147

148

149

150

151

152

153

154

155

156

157

158

159

160

161

162

163

164

165

166

167

168

169

170

171

172

173

174

175

176

177

178

179

180

181

182

183

184

185

186

187

188

189

190

191

192

193

194

195

196

197

198

199

200

201

202

203

204

205

206

207

208

209

210

211

212

213

214

215

216

217

218

219

220

221

222

223

224

225

226

227

228

229

230

231

232

233

234

235

236

237

238

239

240

241

242

243

244

245

246

247

248

249

250

251

252

253

254

255

256

257

258

259

260

261

262

263

264

265

266

267

268

269

270

271

272

273

274

275

276

277