

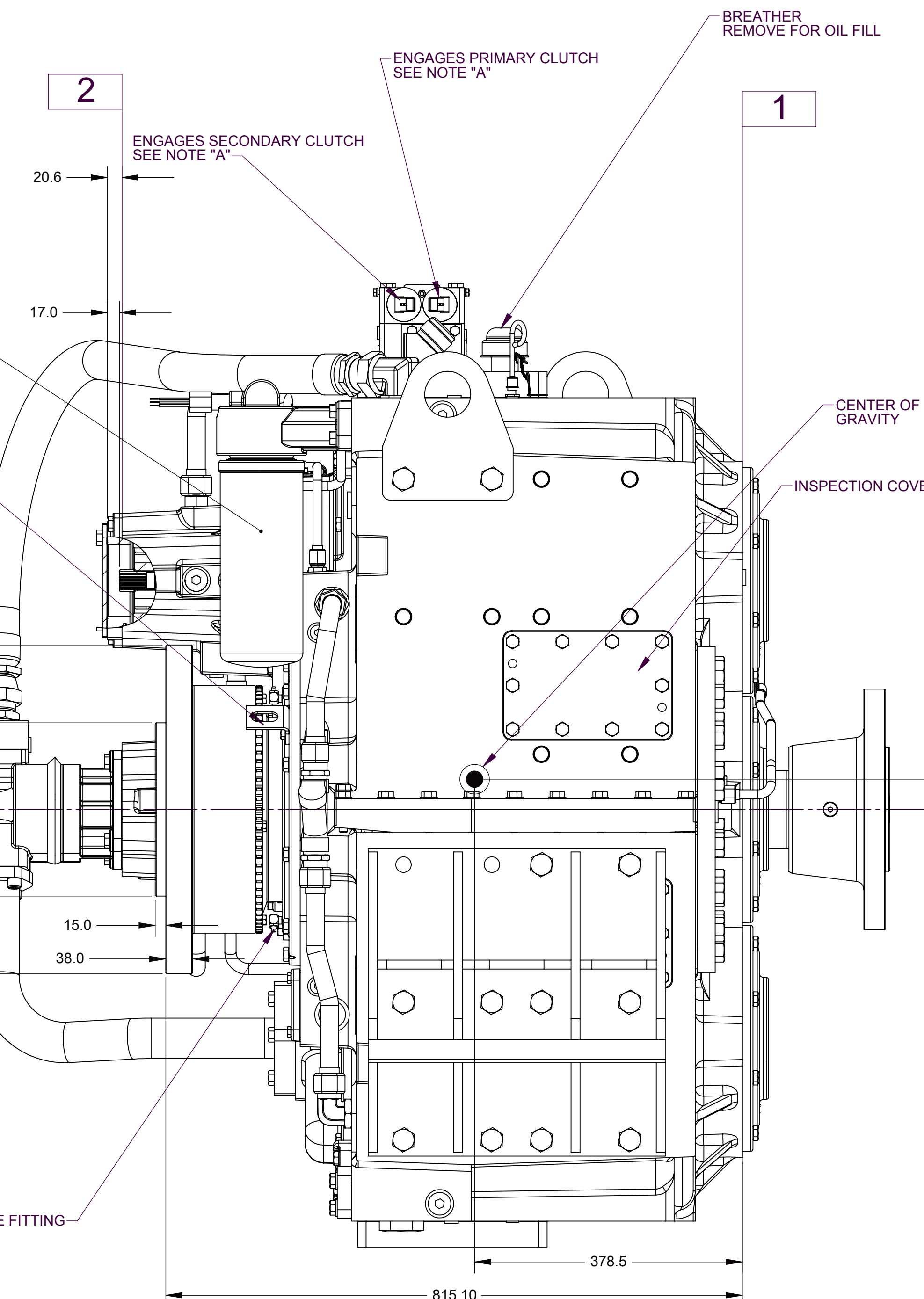
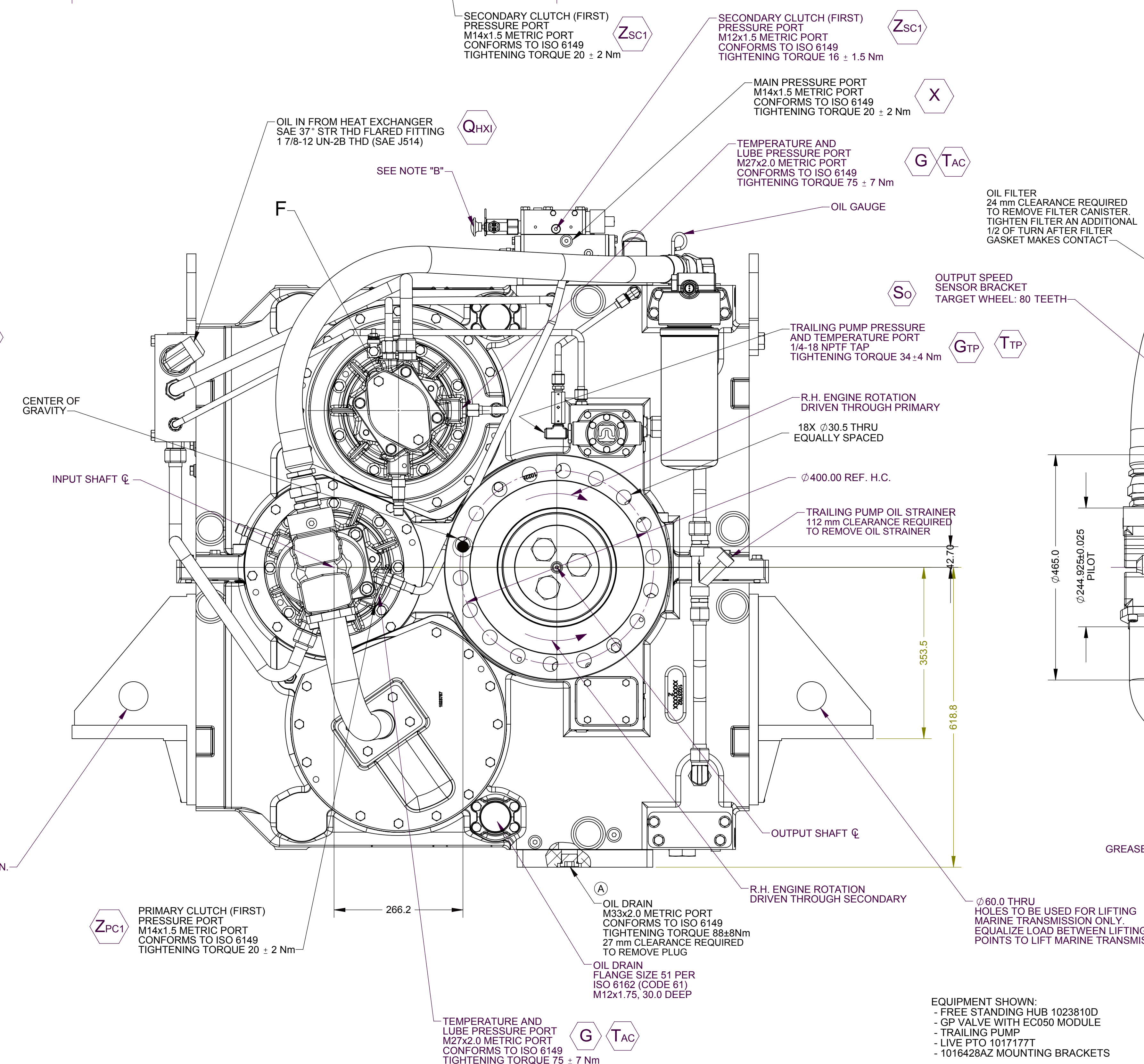
INTERNAL SPLINE DATA		and TWIN DISC ENGR. STD. 9435		
ROOT FLAT		PRESSURE ANGLE		30
NO. OF TEETH		13	PITCH	18.63
PITCH DIA (REF)		.8125	FORM DIA MIN.	.866
MAJOR DIAMETER		MAX.		.866
CIRCULAR SPACE WIDTH		MIN. EFF.		.0982
		MAX. ACT.		.1012
MEASUREMENT BETWEEN .1080 DIA. PINS WITH NONE TO FLAT		MAX.		.6487
		MIN.		.6536
SPLINE DATA IN INCHES				

ⓑ APPLICABLE MODELS:
- MGX-61500SC-HR PER ASSEMBLY 1023611
- MGX-62000SC-HR PER ASSEMBLY 1026776

1 INPUT GROUP REFERENCE PLANE


2 PTO ADAPTER MOUNTING FACE

- A. PROPORTIONAL CONTROL VALVE OPERATION
 - 1. WARNING DO NOT CONNECT VALVE COIL DIRECTLY TO BATTERY/POWER SUPPLY VOLTAGE.
 - 2. OPERATION TO BE PERFORMED WITH ONLY TWIN DISC CONTROL SYSTEMS OR MODULES.
- B. MANUAL DIRECTIONAL CONTROL VALVE OPERATION
 - 1. WITH MANUAL DIRECTIONAL CONTROL VALVE IN CENTERED POSITION, PUSH TO ENGAGE SECONDARY CLUTCH.
 - 2. WITH MANUAL DIRECTIONAL CONTROL VALVE IN CENTERED POSITION, PULL TO ENGAGE PRIMARY CLUTCH.
- C. MANUAL DIRECTIONAL CONTROL VALVE MODE SWITCH
 - 1. SWITCH IS NORMALLY CLOSED WHEN MANUAL DIRECTIONAL CONTROL VALVE IS IN THE CENTERED POSITION AND OPEN WHEN LEVER IS DEACTUATED FROM CENTERED POSITION.
 - 2. CURRENT = 20 AMP MAX.
 - 3. FOR WIRING SCHEMATIC, REFER TO CONTROL MODULE DRAWING.



EQUIPMENT SHOWN:

- FREE STANDING HUB 1023810D
- GP VALVE WITH EC050 MODULE
- TRAILING PUMP
- LIVE PTO 1017177T
- 1016428AZ MOUNTING BRACKETS

FIRST USE ASSEMBLY 1023611 FIRST MODEL MGX-61500SC-HR RELEASE TO:		MICRO 2158.43		 THIRD ANGLE PROJECTION		MATERIAL:		DATE: 02/17/2010 REV: 1		C E CNWF-23526 07/01/20 CHANGE NO. DATE TWIN DISC RACING, TX 75463, USA	
METRIC NOTICE: THIS DRAWING IS THE PROPERTY OF TWIN DISC CORPORATION AND IS NOT TO BE REPRODUCED OR TRANSMITTED IN ANY FORM OR BY ANY MEANS, ELECTRONIC OR MECHANICAL, INCLUDING PHOTOCOPYING, RECORDING, OR BY ANY INFORMATION STORAGE AND RETRIEVAL SYSTEM.		UNLESS OTHERWISE SPECIFIED, DIMENSIONS ARE IN MILLIMETERS. DIMENSIONS IN PARENTHESES ARE IN INCHES. ALL DIMENSIONS ARE TO BE HOLE LOCATIONS UNLESS OTHERWISE SPECIFIED.		DESCRIPTION:		INSTALLATION [®] MGX-61500SC-HR, MGX-6200SC-HR		DRAWN BY: MDJ CHECKED BY: JCS APPROVED BY: ALC		1025260B IN SHEET 1 OF 1 REV:	