

A. PROPORTIONAL CONTROL VALVE OPERATION

1. WARNING DO NOT CONNECT VALVE COIL DIRECTLY TO BATTERY/POWER SUPPLY VOLTAGE.
2. OPERATION TO BE PERFORMED WITH ONLY TWIN DISC CONTROL SYSTEMS OR MODULES.

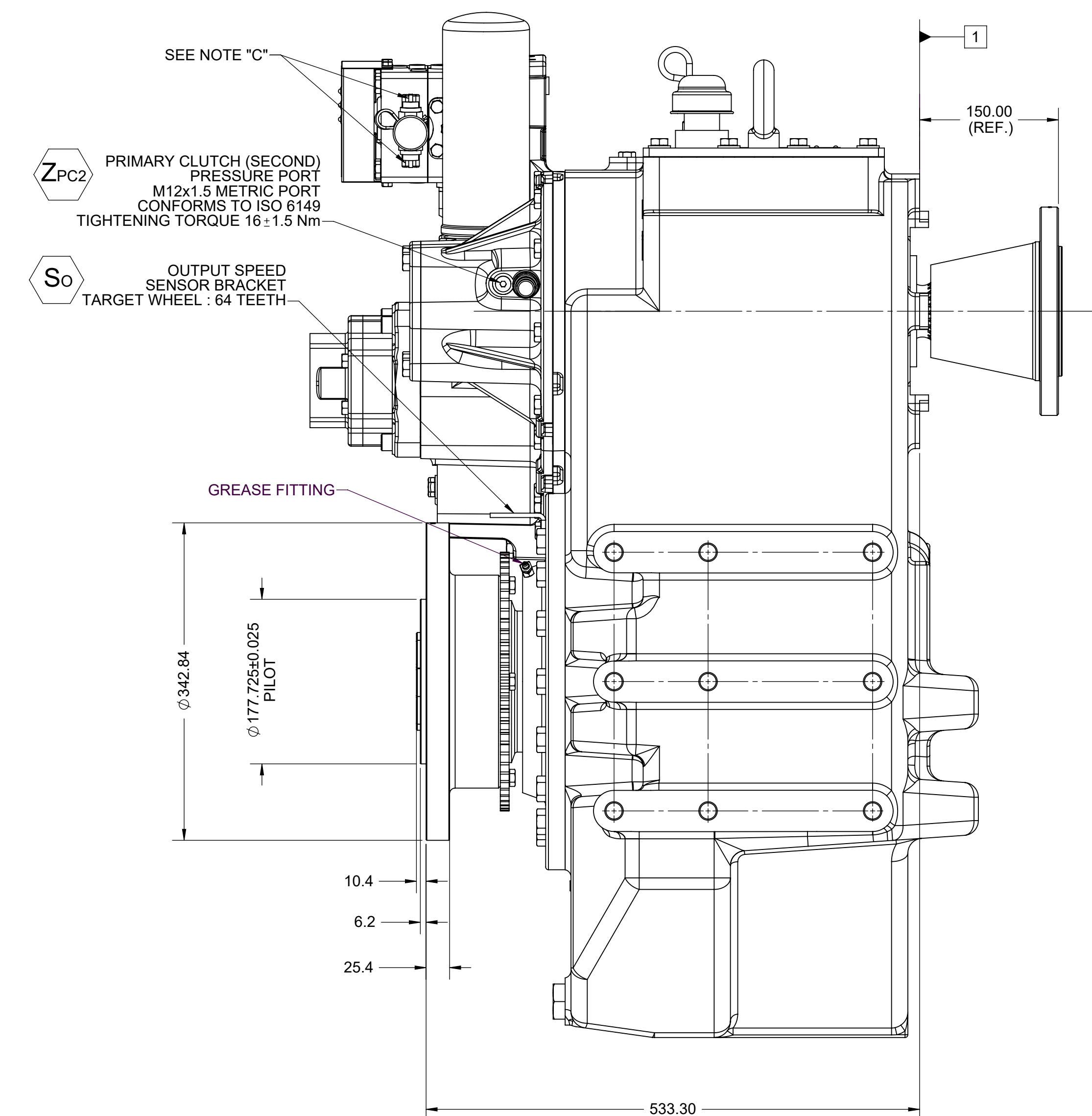
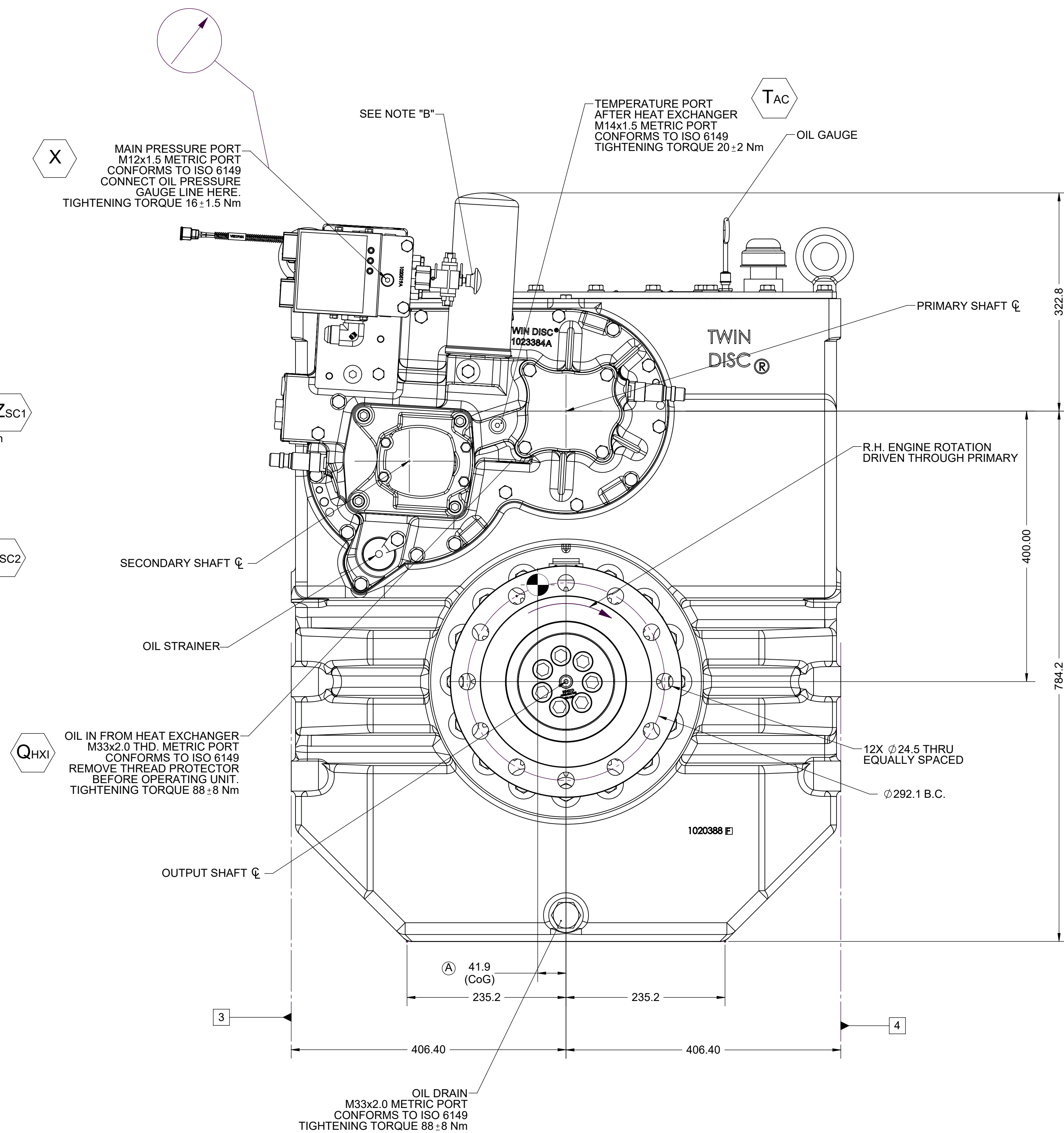
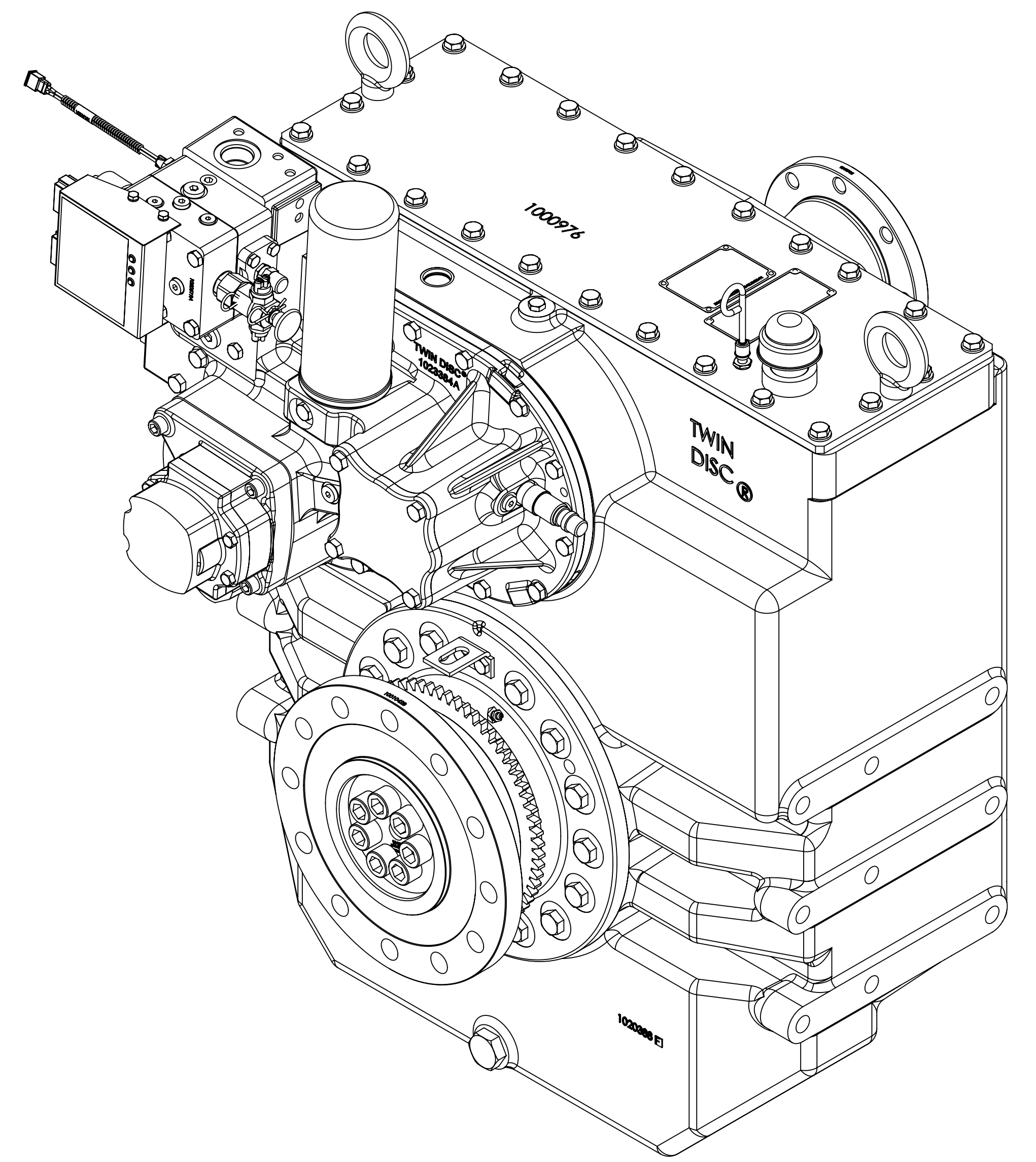
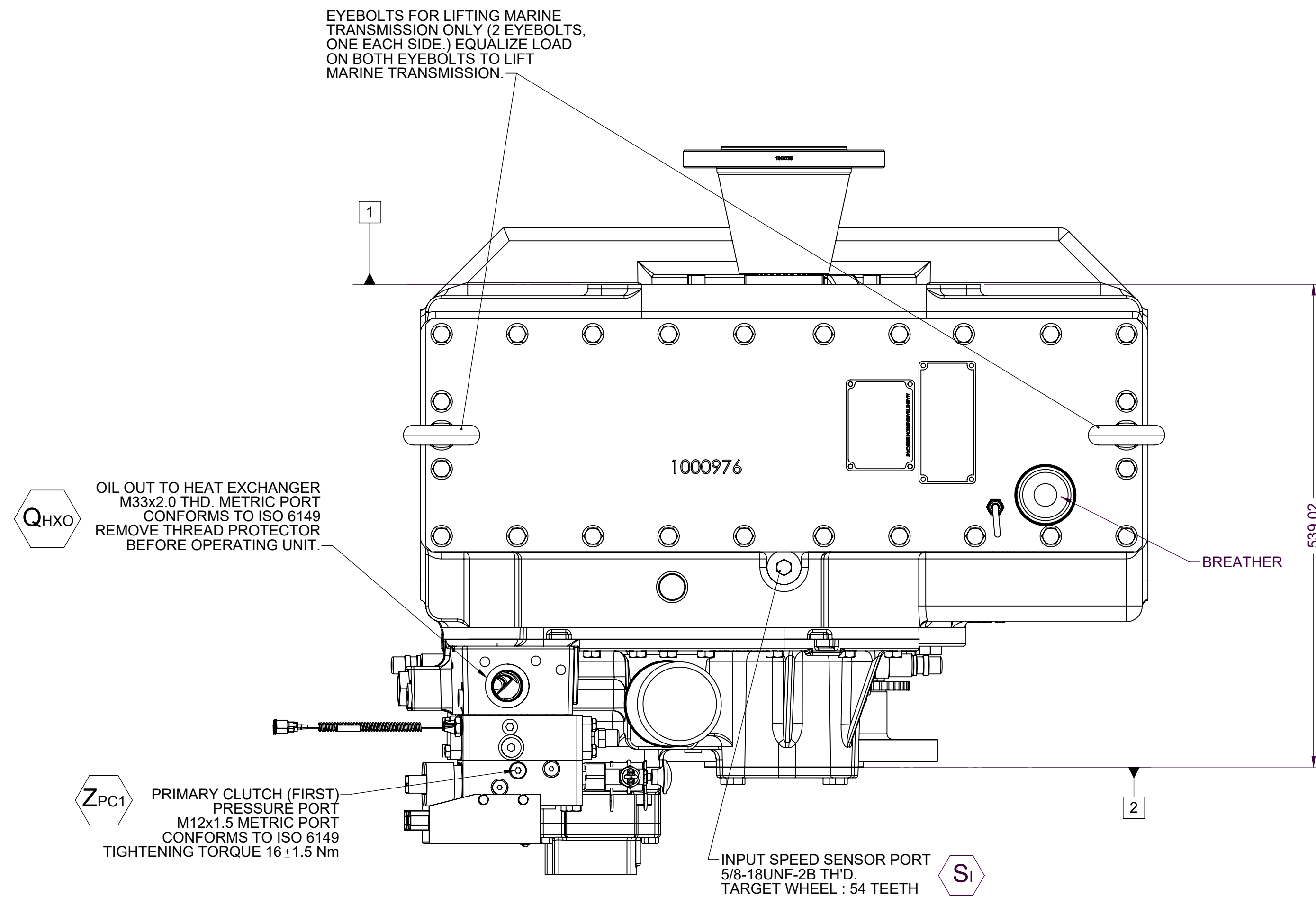
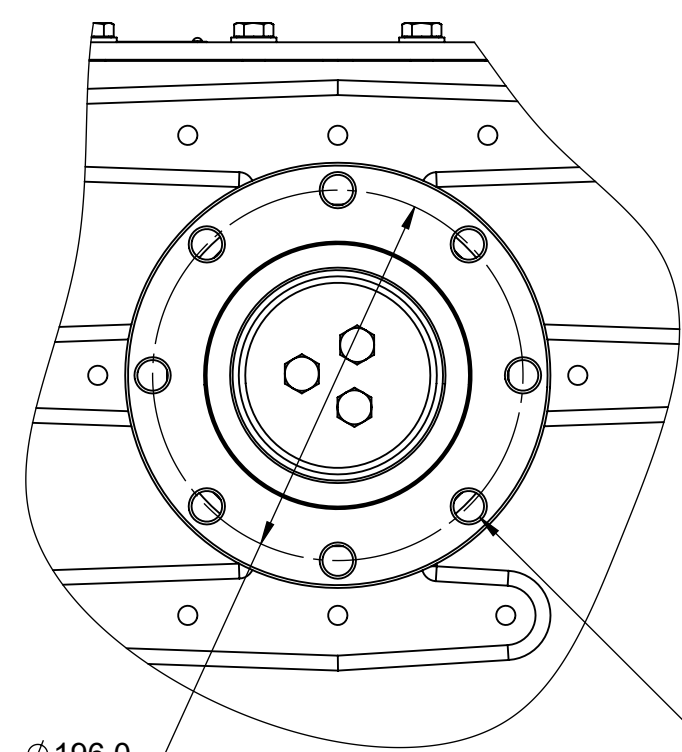
B. MANUAL DIRECTIONAL CONTROL VALVE OPERATION

1. WITH MANUAL DIRECTIONAL CONTROL VALVE IN CENTERED POSITION, PUSH TO ENGAGE PRIMARY CLUTCH.
2. WITH MANUAL DIRECTIONAL CONTROL VALVE IN CENTERED POSITION, PULL TO ENGAGE SECONDARY CLUTCH.

C. MANUAL DIRECTIONAL CONTROL VALVE MODE SWITCH

1. SWITCH IS NORMALLY CLOSED WHEN MANUAL DIRECTIONAL CONTROL VALVE IS IN THE CENTERED POSITION AND OPEN WHEN CENTER IS SELECTED FROM CENTERED POSITION.
2. CURRENT = 20 AMP MAX.
3. FOR WIRING SCHEMATIC, REFER TO CONTROL MODULE DRAWING.

- 1 INPUT GROUP REFERENCE PLANE
- 2 PTO ADAPTER MOUNTING FACE
- 3 LEFT MOUNTING BRACKET FACE
- 4 RIGHT MOUNTING BRACKET FACE



EQUIPMENT SHOWN:
- MGX-5222DC
- 1019735 INPUT HUB
- GP VALVE WITH EC050 MODULE