

A. PROPORTIONAL CONTROL VALVE OPERATION

1. WARNING DO NOT CONNECT VALVE COIL DIRECTLY TO BATTERY/POWER SUPPLY VOLTAGE
2. OPERATION TO BEATION TO BE COINED WITH ONLY TWIN DISC CONTROL SYSTEMS OR MODULES

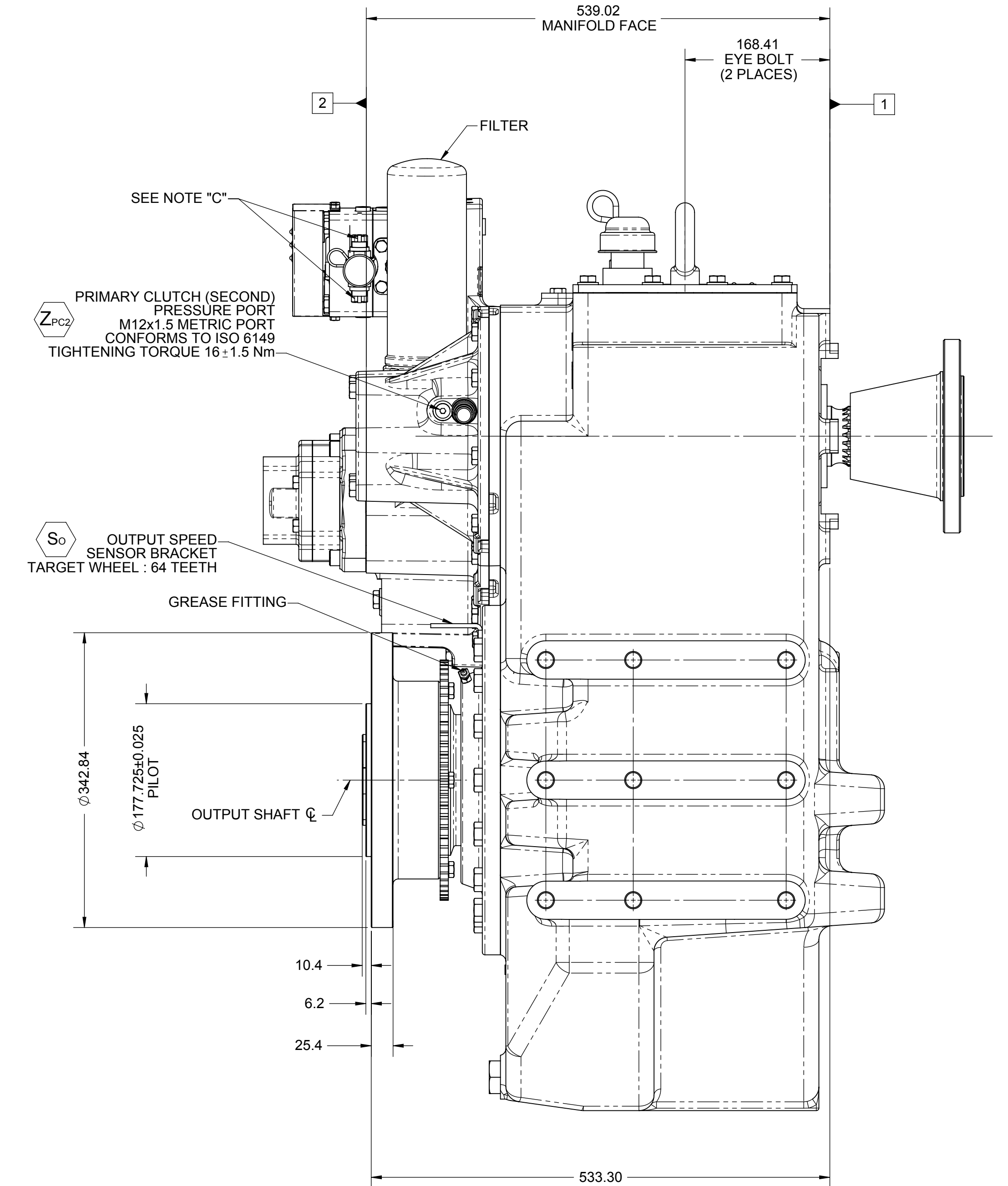
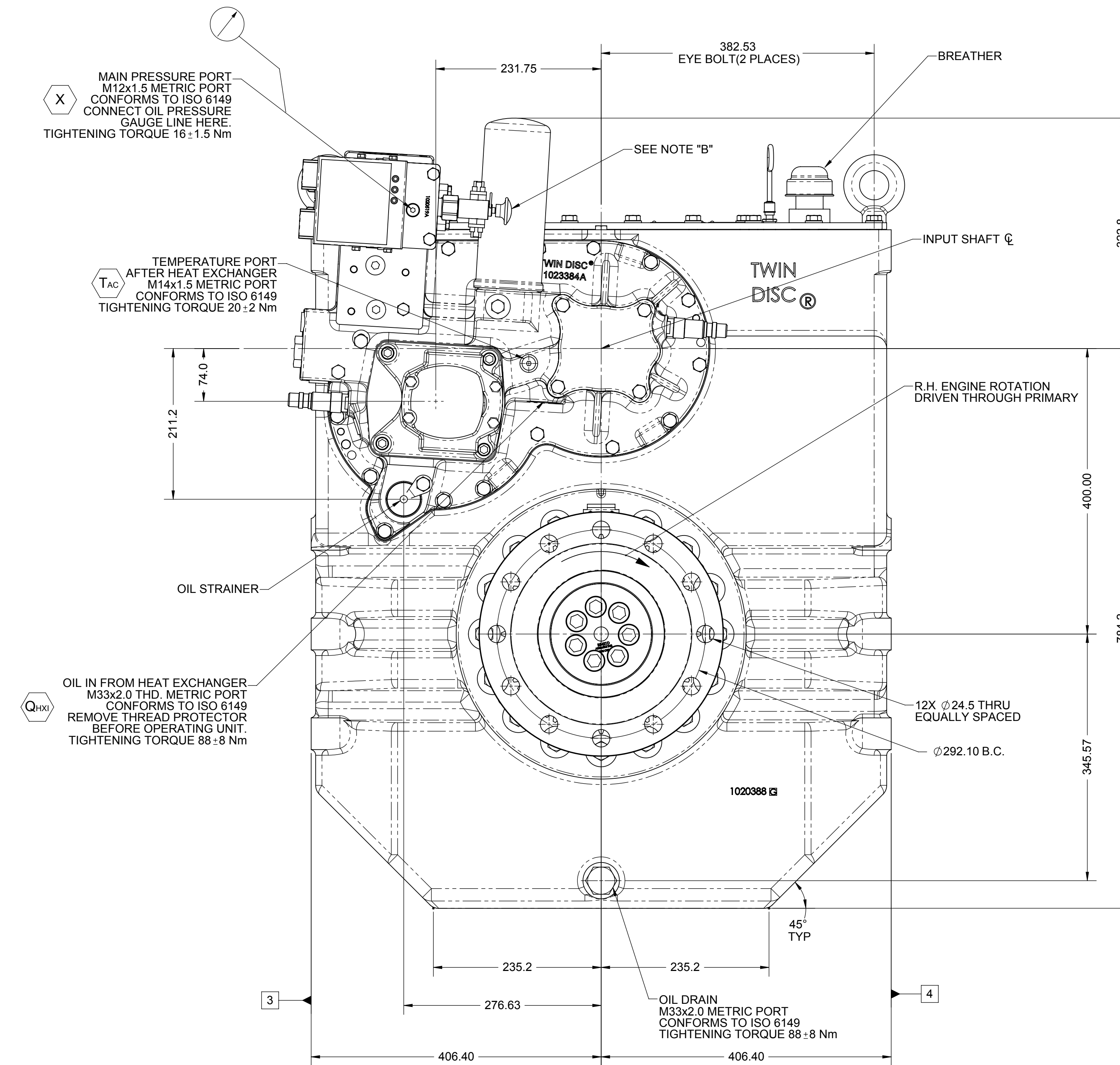
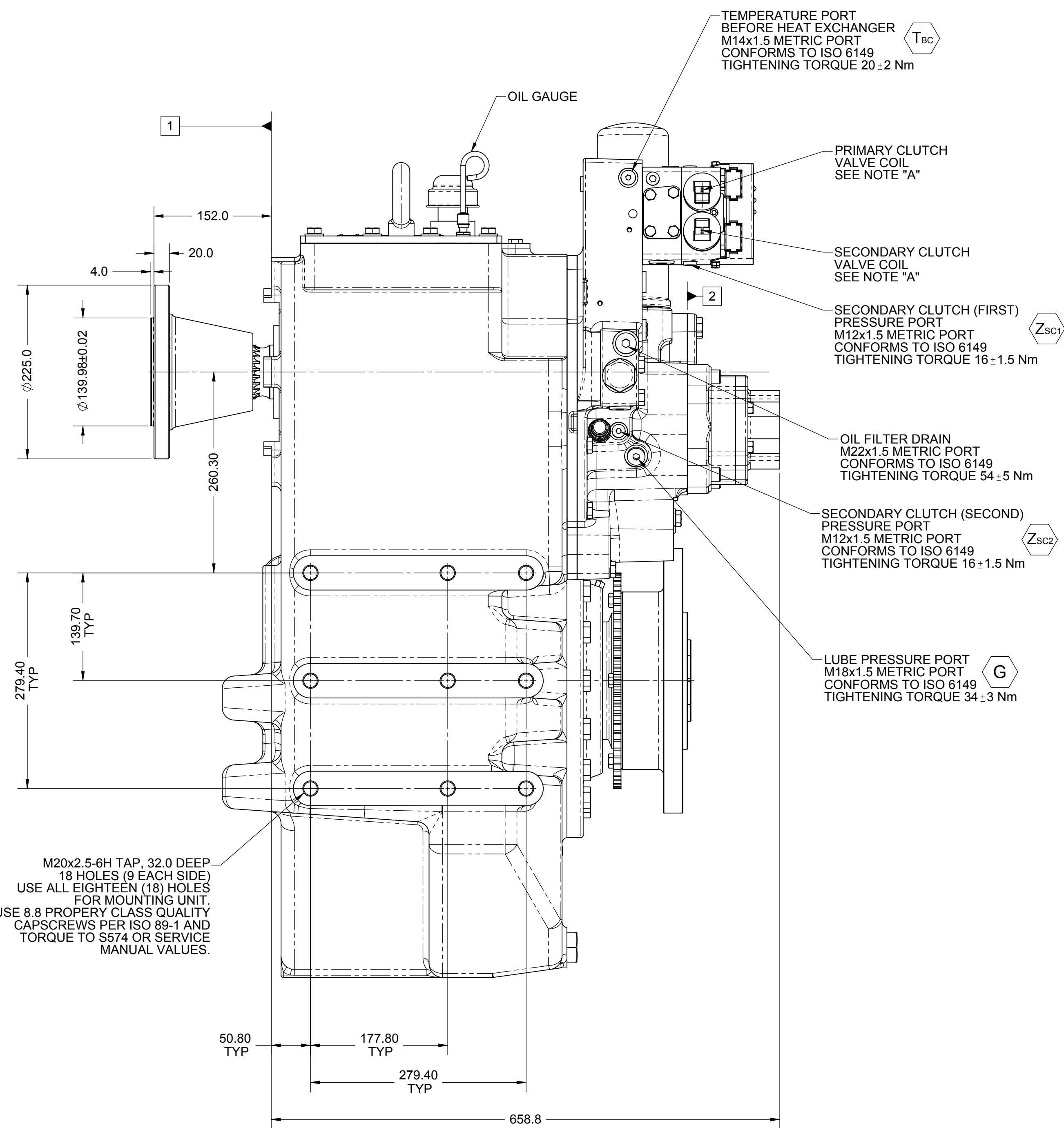
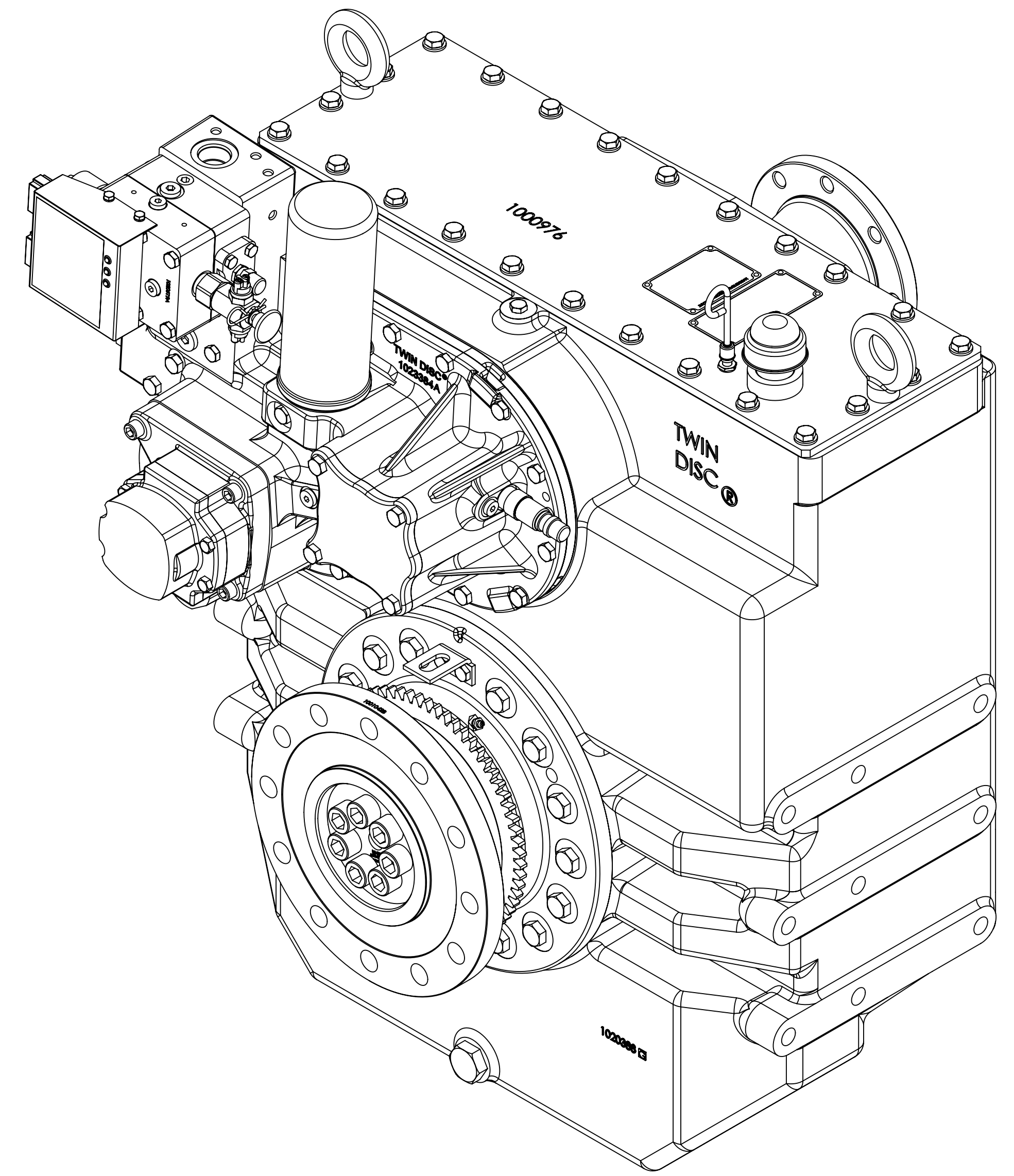
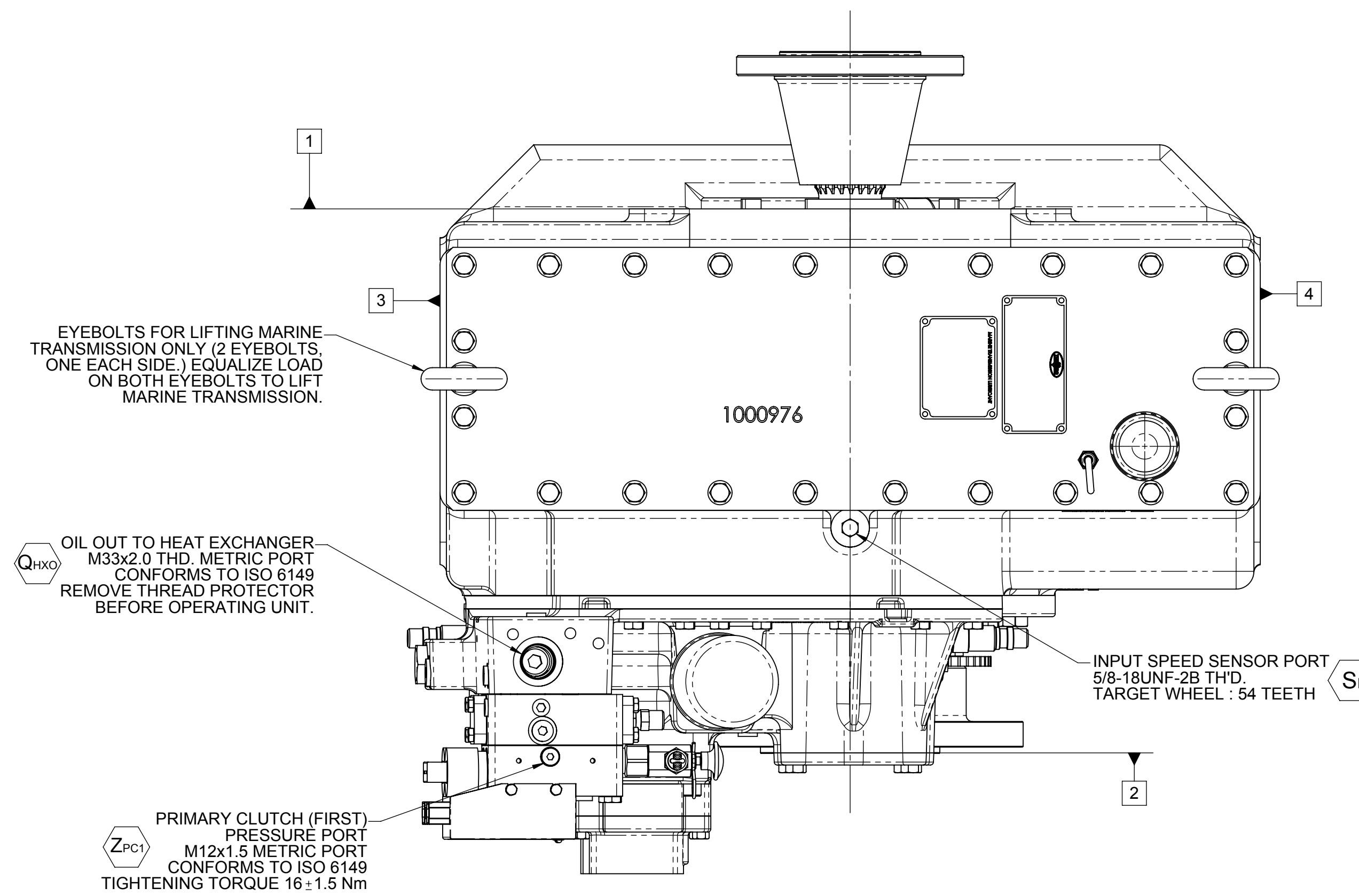
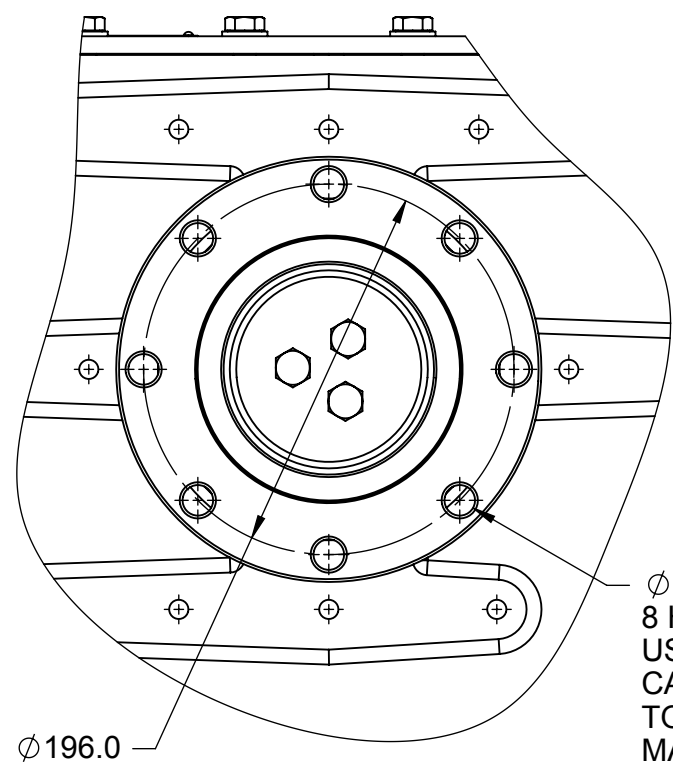
B. MANUAL DIRECTIONAL CONTROL VALVE OPERATION

1. WITH MANUAL DIRECTIONAL CONTROL VALVE IN CENTERED POSITION, PUSH TO ENGAGE PRIMARY CLUTCH.
2. WITH MANUAL DIRECTIONAL CONTROL VALVE IN CENTERED POSITION, PULL TO ENGAGE SECONDARY CLUTCH.

C. MANUAL DIRECTIONAL CONTROL VALVE MODE SWITCH

1. SWITCH IS NORMALLY CLOSED WHEN MANUAL DIRECTIONAL CONTROL VALVE IS IN THE CENTERED POSITION AND OPEN WHEN LEVER IS QUATED FROM CENTERED POSITION.
2. CURRENT = 20 AMP MAX.
3. FOR WIRING SCHEMATIC, REFER TO CONTROL MODULE DRAWING.

- |   |                             |
|---|-----------------------------|
| 1 | INPUT GROUP REFERENCE PLANE |
| 2 | PTO ADAPTER MOUNTING FACE   |
| 3 | LEFT MOUNTING BRACKET FACE  |
| 4 | RIGHT MOUNTING BRACKET FACE |



EQUIPMENT SHOWN:  
- MGX-5225DC  
- 1019735A INPUT HUB  
- GP VALVE WITH EC050 MODULE

NOTE:  
ALL POINTS AVAILABLE FOR TESTING ARE CODED

FIRST USE ASSEMBLY:		DATE: 06/02/2011	
USE MODEL:	REV: 1.0	REV: CHANGE NO.	
SIMILAR TO:	<div style="display: flex; align-items: center;"> <div style="margin-right: 10px;"> </div> <div> <div style="display: flex; justify-content: space-between;"> <div>             MOUNT: <math>\frac{1}{2}</math>"              1" </div> <div> <math>\frac{1}{2}</math>"              1" </div> </div> </div> </div>		
<div style="text-align: center;"> <h1>METRIC</h1> <p>NOTE: THIS PRINT CONTAINS PROPERTY INFORMATION AND IS NOT TO BE REPRODUCED OR COPIED IN ANY MANNER WITHOUT THE WRITTEN PERMISSION OF TWIN (DISC). ALL RIGHTS ARE RESERVED. THIS PRINT IS THE PROPERTY OF TWIN (DISC) AND IS NOT TO BE LOANED, REPRODUCED, COPIED, OR IN ANY MANNER USED FOR ANY OTHER PURPOSE WITHOUT THE WRITTEN PERMISSION OF TWIN (DISC). PERMITS MAY BE OBTAINED BY CONTACTING TWIN (DISC) AT 1-800-368-7263.</p> </div>		MATERIAL: _____ SPEC. TREAT: _____	
		DESCRIPTION: _____ <div style="display: flex; justify-content: space-between;"> <div>             UNLESS OTHERWISE SPECIFIED              MACHINED DIMENSIONS              EX: 10.00 ± 0.05              ALL ANGLES 10° UNLESS NOTED              ALL DIMENSIONS IN INCHES ± 0.005              PER ASME Y14.5M 1994 </div> <div>             INSTALLATION              MGX-5252DC </div> </div>	
<div style="display: flex; align-items: center;"> <div style="margin-right: 10px;"> </div> <div>             DRAWN BY: 1.4              RACINE, WI 53403 - USA              CHECKED BY: _____              APPROVED BY: _____              DATED: _____              ALC </div> </div>		<div style="display: flex; align-items: center;"> <div style="margin-right: 10px;"> </div> <div> <h1>1025541C</h1> </div> </div>	
SIZE: A0 1 OF 1		REV: _____	