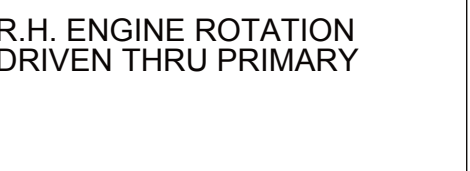
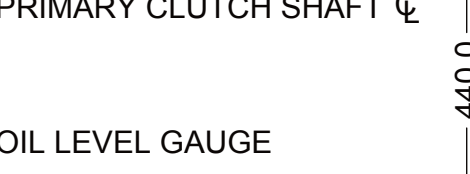
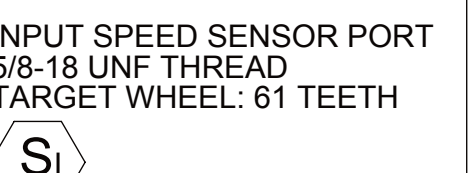
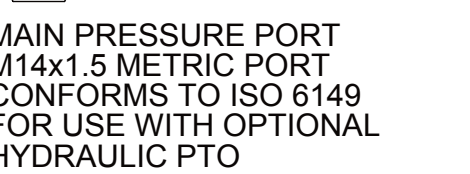
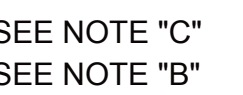
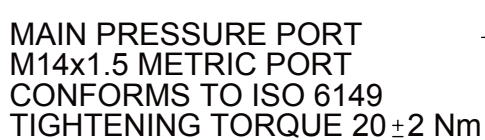
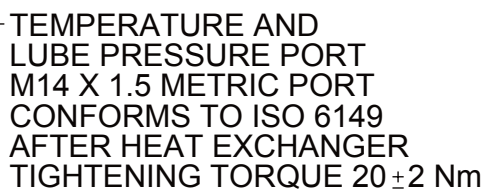
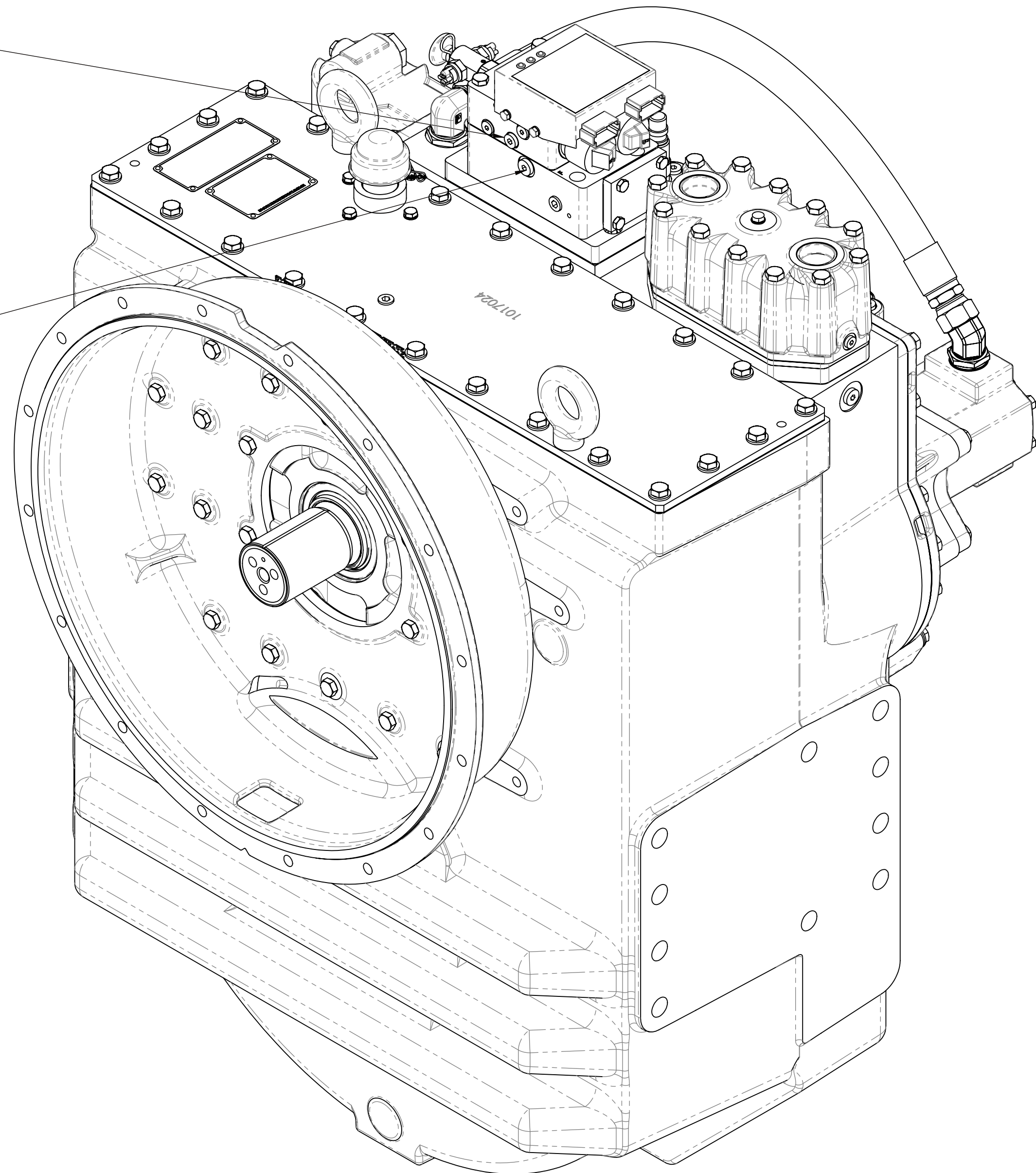
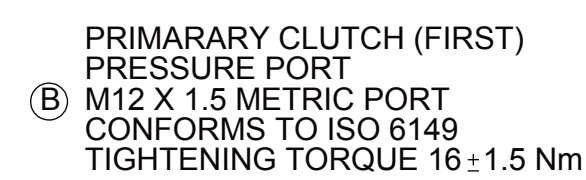
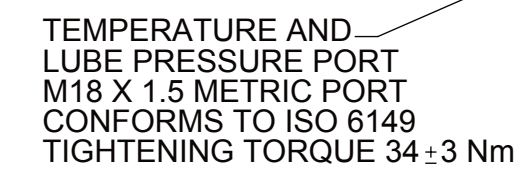


- A. PROPORTIONAL CONTROL VALVE OPERATION
 - 1. WARNING DO NOT CONNECT VALVE COIL DIRECTLY TO BATTERY / POWER SUPPLY OR VOLUNTARY CLUTCH.
 - 2. OPERATION TO BE PERFORMED WITH ONLY TWIN DISC CONTROL SYSTEMS OR MODULES.
- B. MANUAL DIRECTIONAL CONTROL VALVE OPERATION
 - 1. WITH MANUAL DIRECTIONAL CONTROL VALVE IN CENTERED POSITION, PUSH TO ENGAGE PRIMARY CLUTCH.
 - 2. WITH MANUAL DIRECTIONAL CONTROL VALVE IN CENTERED POSITION, PULL TO ENGAGE SECONDARY CLUTCH.
- C. MANUAL DIRECTIONAL CONTROL VALVE MODE SWITCH
 - 1. SWITCH IS NORMALLY CLOSED WHEN MANUAL DIRECTIONAL CONTROL VALVE IS IN THE CENTERED POSITION AND OPEN WHEN LEVER IS ACTUATED FROM CENTERED POSITION.
 - 2. CURRENT = 30 AMP.
 - 3. FOR WIRING SCHEMATIC, REFER TO EC650 CONTROL MODULE DRAWING.
- D. REFERENCE S930 FOR TWIN DISC REQUIREMENTS FOR PRESSURE AND TEMPERATURE ALARM LEVELS.

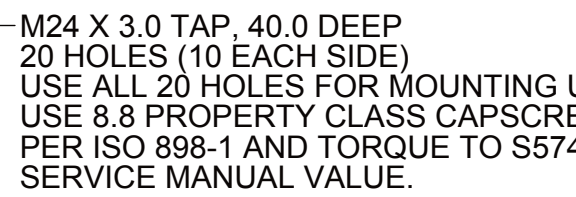
- | | |
|---|-----------------------------|
| 1 | INPUT GROUP REFERENCE PLANE |
| 2 | PTO ADAPTER MOUNTING FACE |
| 3 | LEFT MOUNTING BRACKET FACE |
| 4 | RIGHT MOUNTING BRACKET FACE |

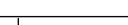



NOTE:

ALL POINTS AVAILABLE FOR TESTING ARE CODED

EQUIPMENT SHOWN:
 - MGX-5321DC PER 1022203B ASSEMBLY
 - SAE#0 FRONT HOUSING
 - GP VALVE WITH EC050 MODULE
 - RAW WATER HEAT EXCHANGER



FIRST USE ASSEMBLY:		REV: 642.97				THIRD ANGLE PROJECTION		MATERIAL:		DATE: 04/06/2010			
FIRST USE MODEL:		REV: 642.97						HEAT TREAT:		SCALE:		RACINE, WI 53404 - USA	
SIMILAR TO:										DRAWN BY: YU		1026064	
METRIC										CHECKED BY: CS			
NOTES: THIS PRINT CONTAINS TECHNICAL INFORMATION AND IS NOT TO BE USED IN ANY MANNER PERTINENT TO THE INTERESTS OF TWIN DISC, INCORPORATED. ALL RIGHTS ARE RESERVED AND GRANTED TO THE U.S. GOVERNMENT OR OTHERS BY CONTRACT.										APPROVED BY: ALC		DWG SIZE: A0	
										SHEET: 1 OF 1		REV: C	
										A		10254209 Rev. B	