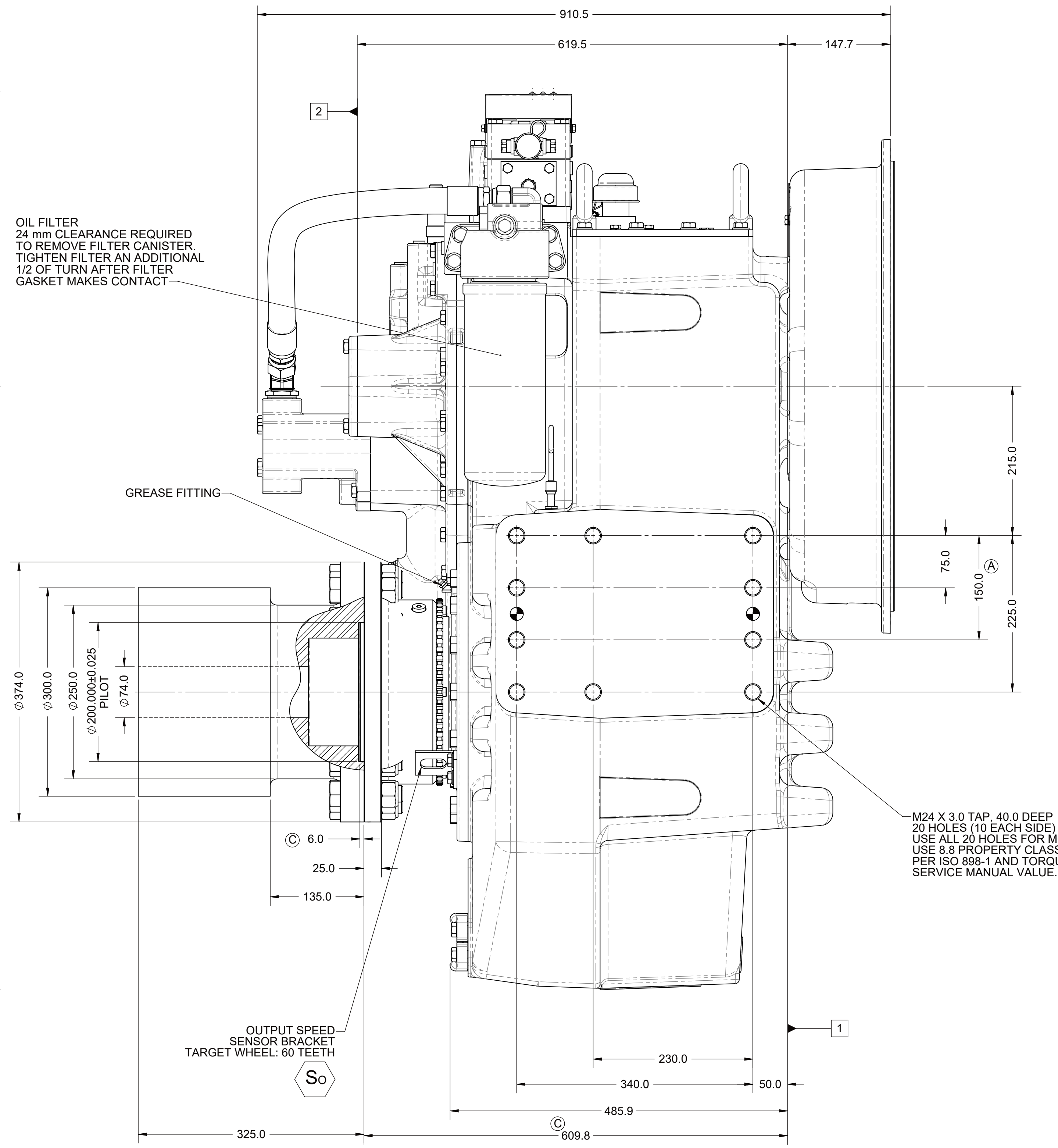
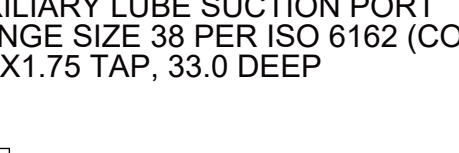
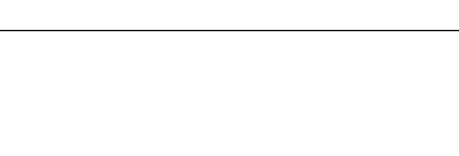
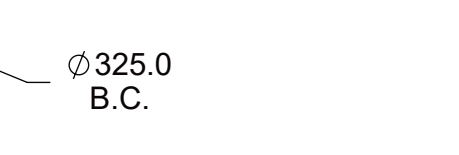
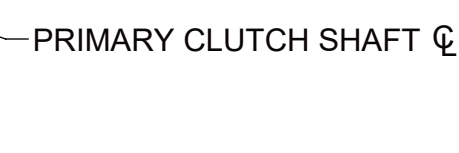
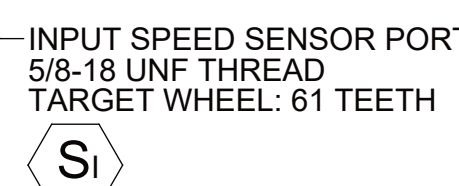
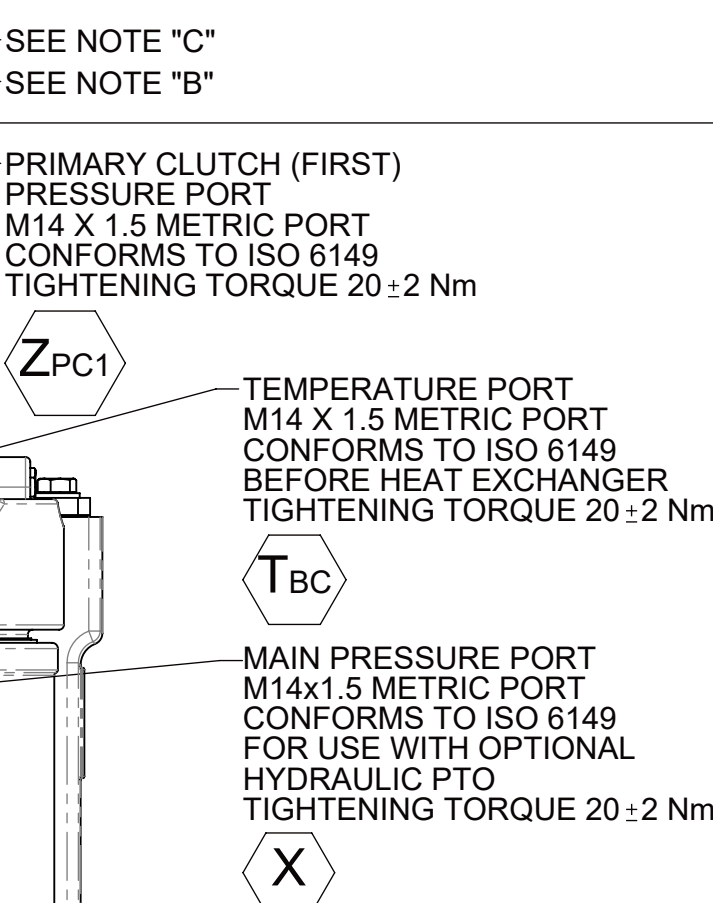
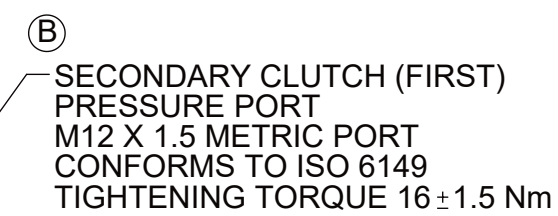
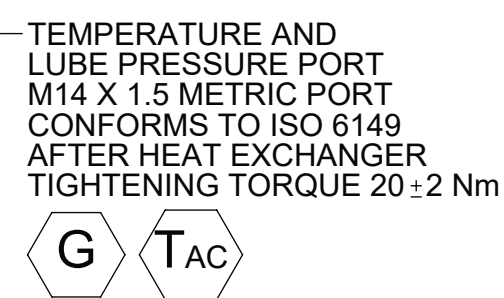
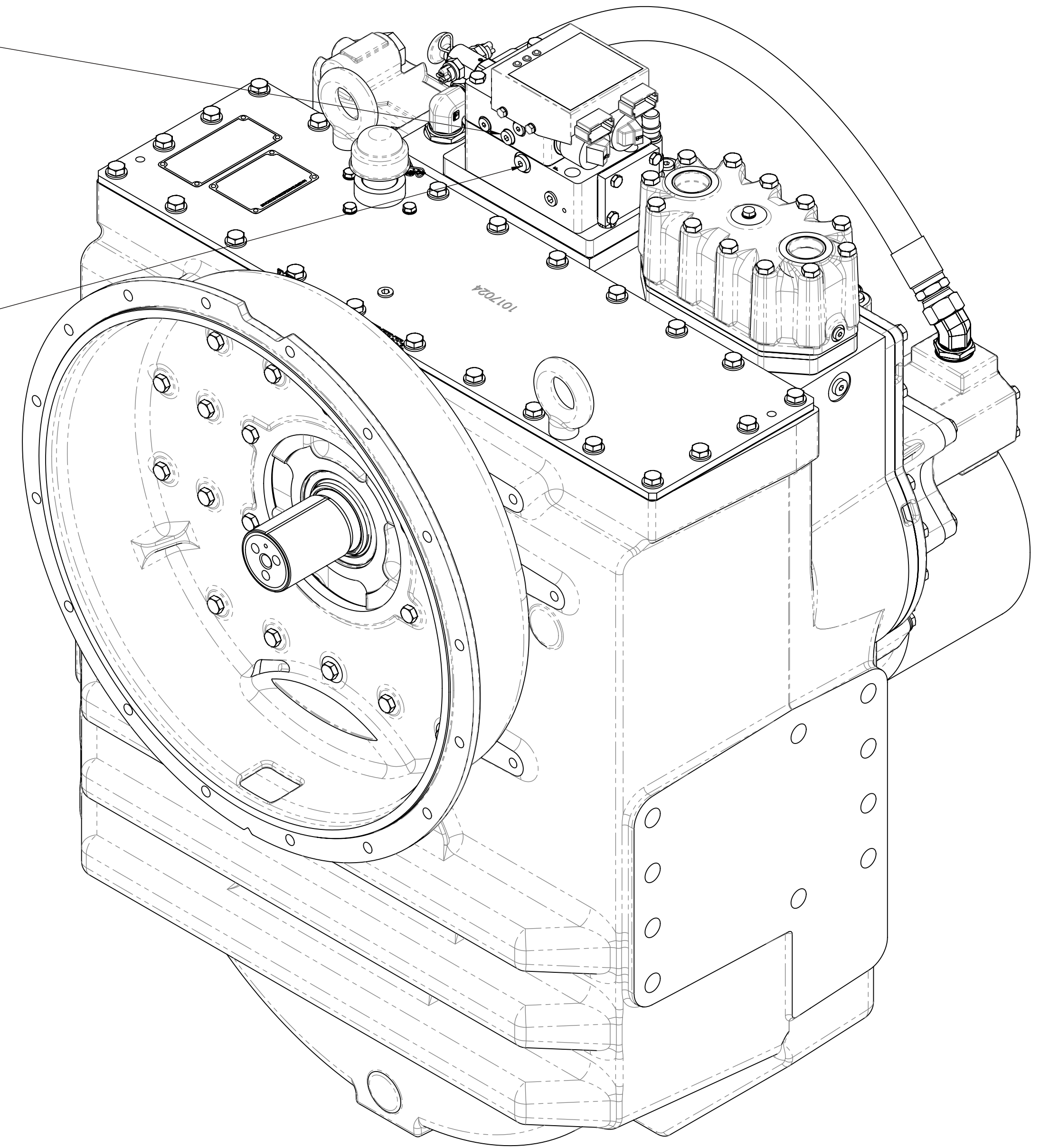
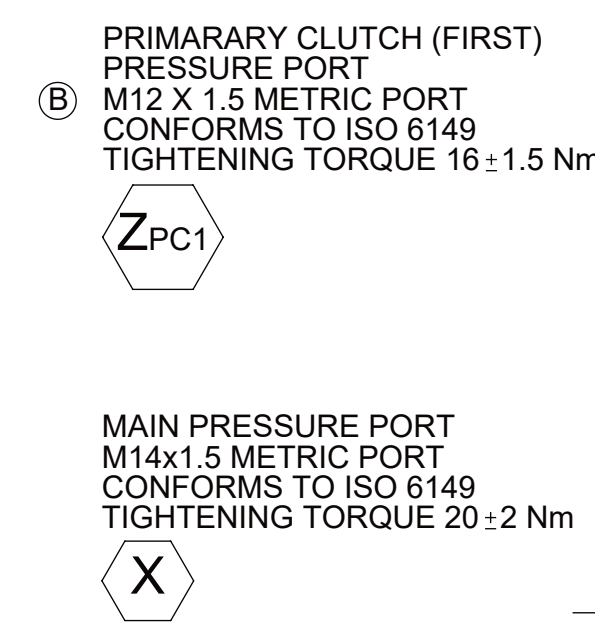


- A. PROPORTIONAL CONTROL VALVE OPERATION
 - 1. WARNING DO NOT CONNECT VALVE COIL DIRECTLY TO BATTERY / POWER SUPPLY VOLTAGE
 - 2. OPERATION TO BE PERFORMED WITH ONLY TWIN DISC CONTROL SYSTEMS OR MODULES.
- B. MANUAL DIRECTIONAL CONTROL VALVE OPERATION
 - 1. WITH MANUAL DIRECTIONAL CONTROL VALVE IN CENTERED POSITION, PUSH TO ENGAGE PRIMARY CLUTCH
 - 2. WITH MANUAL DIRECTIONAL CONTROL VALVE IN CENTERED POSITION, PULL TO ENGAGE SECONDARY CLUTCH.
- C. MANUAL DIRECTIONAL CONTROL VALVE MODE SWITCH
 - 1. SWITCH IS NORMALLY CLOSED. MANUAL DIRECTIONAL CONTROL VALVE IS IN THE CENTERED POSITION AND OPEN WHEN LEVER IS ACTUATED FROM CENTERED POSITION.
 - 2. CURRENT = 20 AMPS MAX
 - 3. FOR WIRING SCHEMATIC, REFER TO EC050 CONTROL MODULE DRAWING.
- D. REFERENCE S930 FOR TWIN DISC REQUIREMENTS FOR PRESSURE AND TEMPERATURE ALARM LEVELS.

- | | |
|---|-----------------------------|
| 1 | INPUT GROUP REFERENCE PLANE |
| 2 | PTO ADAPTER MOUNTING FACE |
| 3 | LEFT MOUNTING BRACKET FACE |
| 4 | RIGHT MOUNTING BRACKET FACE |



M24 X 3.0 TAP, 40.0 DEEP
20 HOLES (10 EACH SIDE)
USE ALL 20 HOLES FOR MOUNTING UNIT.
USE 8.8 PROPERTY CLASS CAPSCREWS
PER ISO 898-1 AND TORQUE TO S574 OR
SERVICE MANUAL VALUE.

ALL POINTS AVAILABLE FOR TESTING ARE CODED

EQUIPMENT SHOWN:

- MGX-5321DC PER 1022203B ASSEMBLY
- SAE#0 FRONT HOUSING
- GP VALVE WITH EC050 MODULE
- RAW WATER HEAT EXCHANGER
- 1017084 COMPANION FLANGE ASSEMBLY

