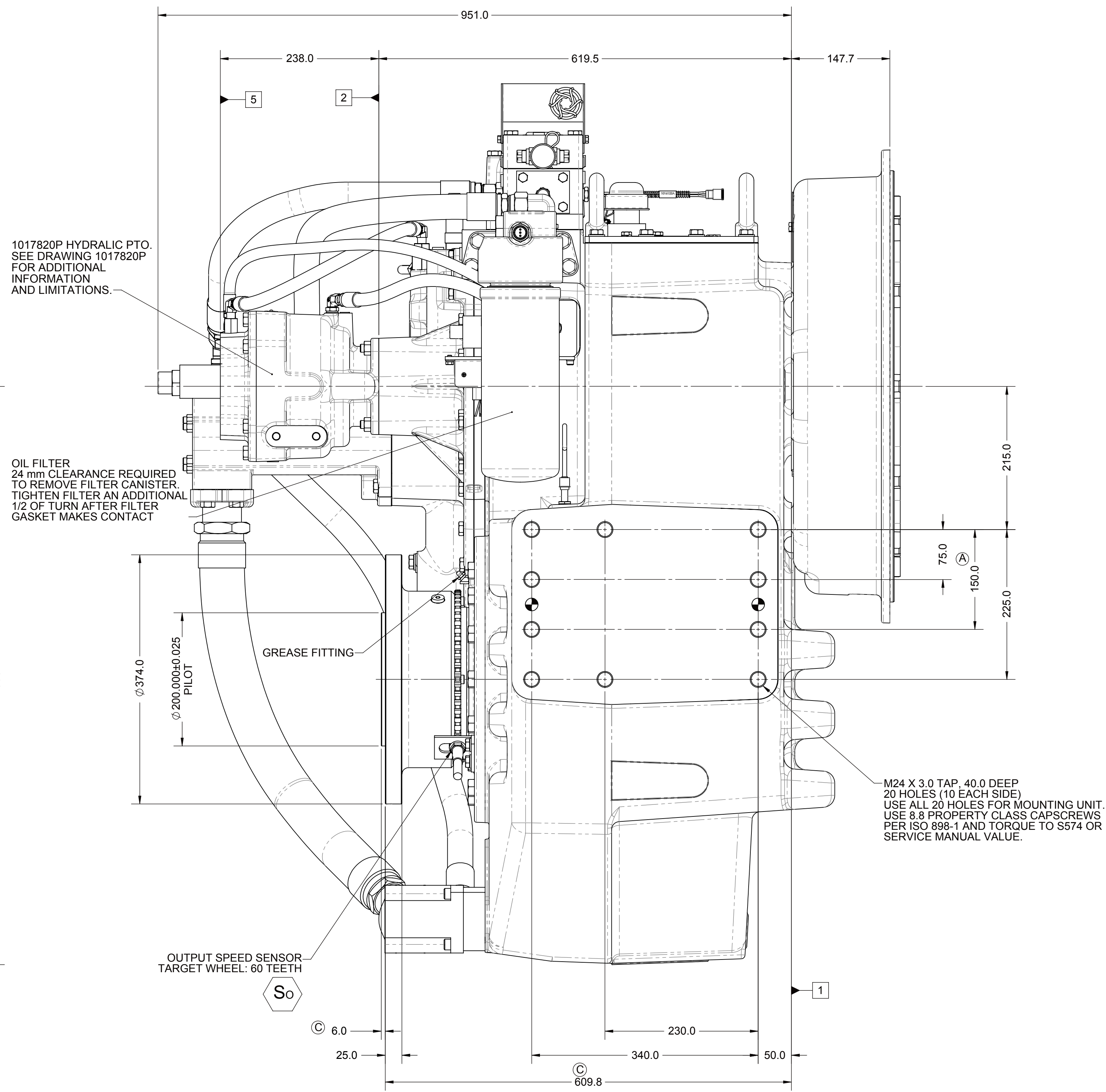
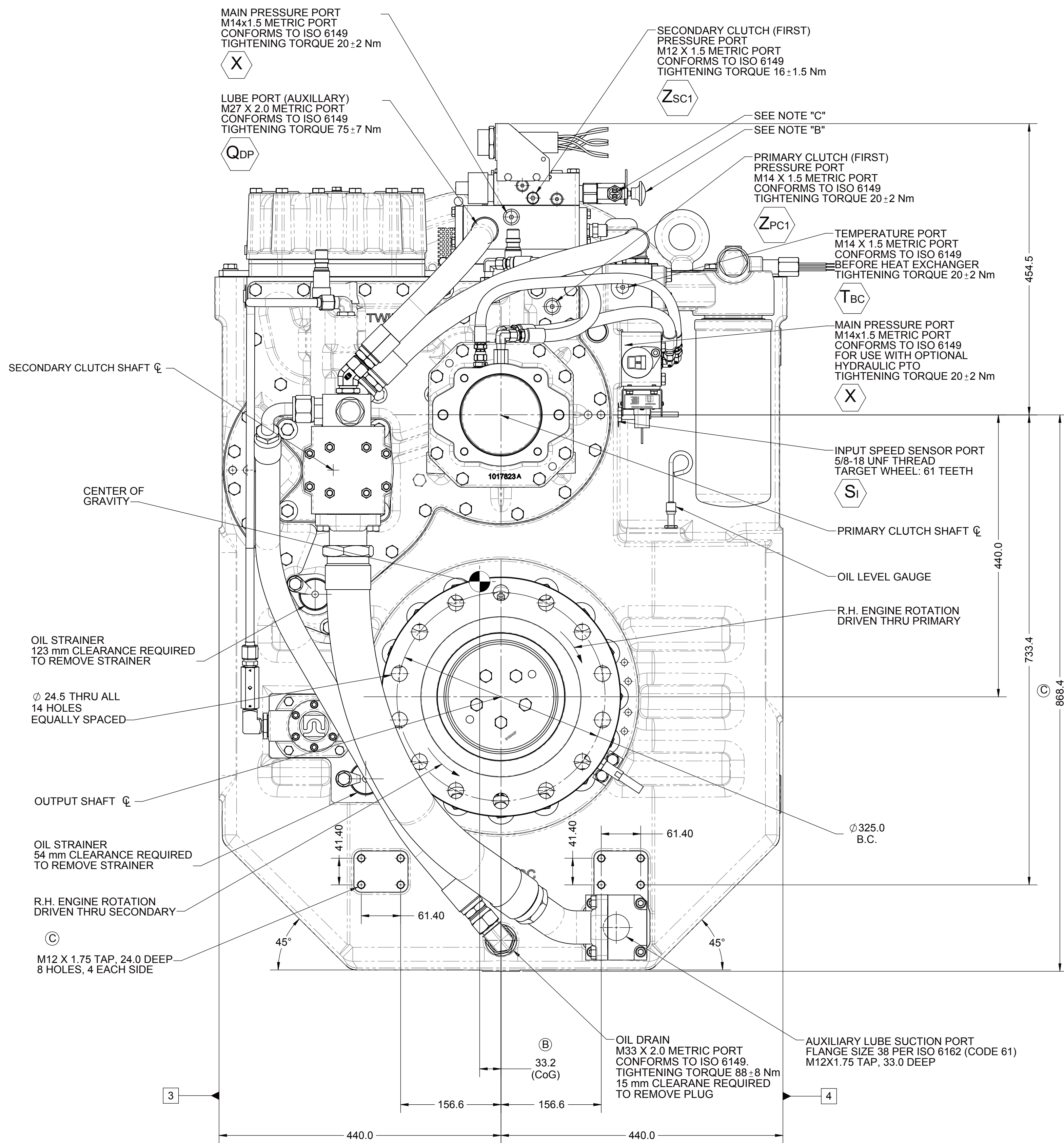
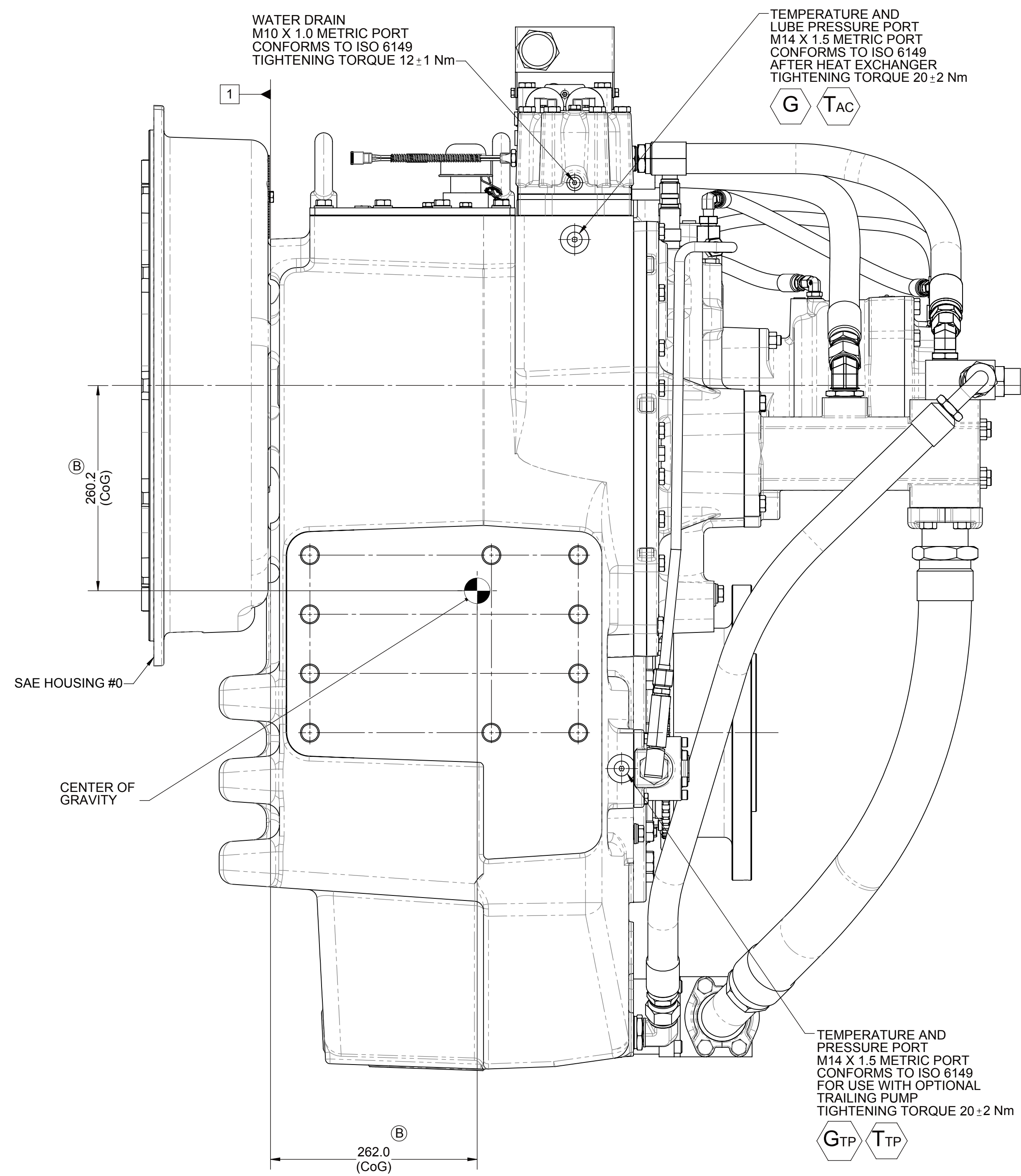
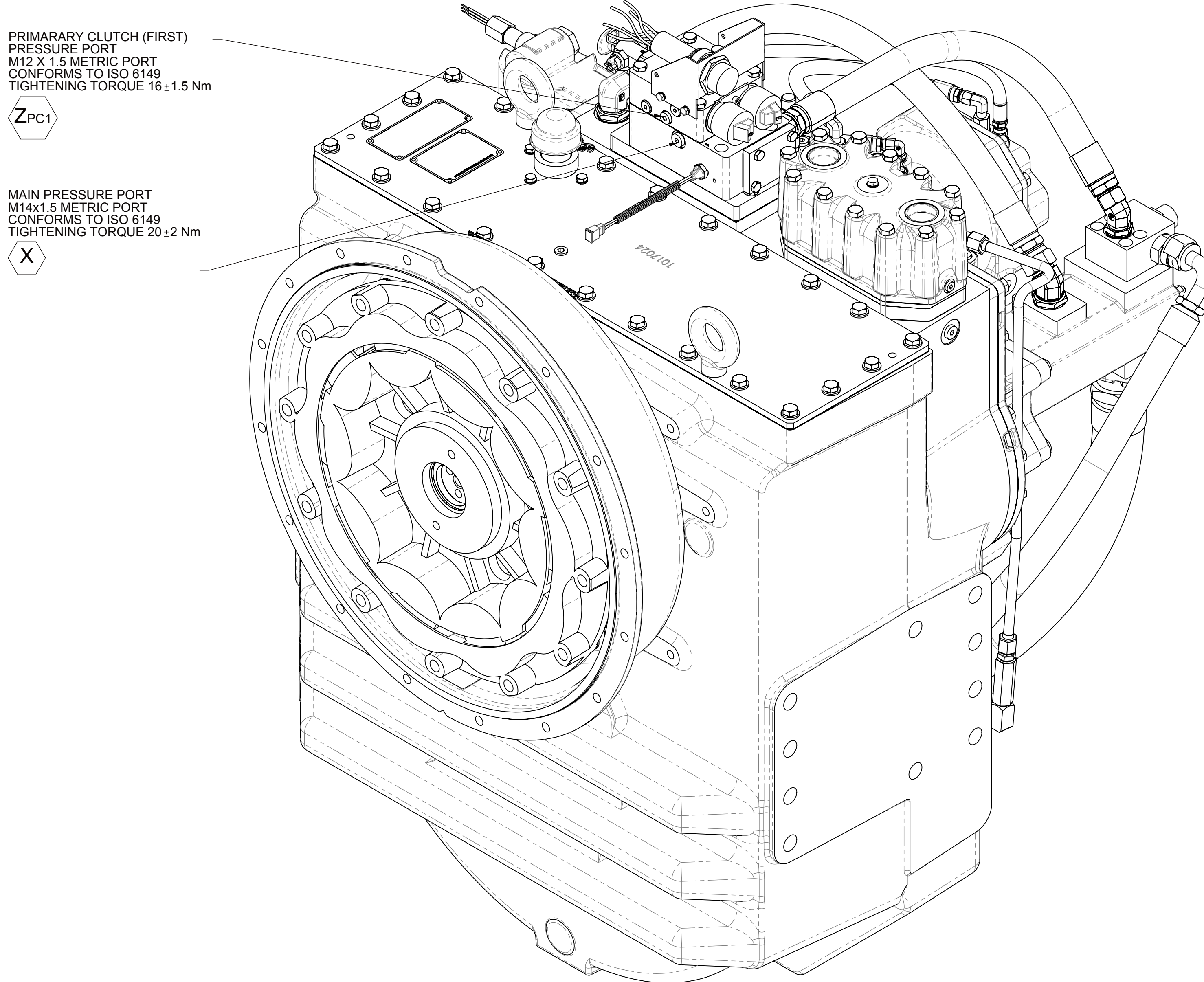
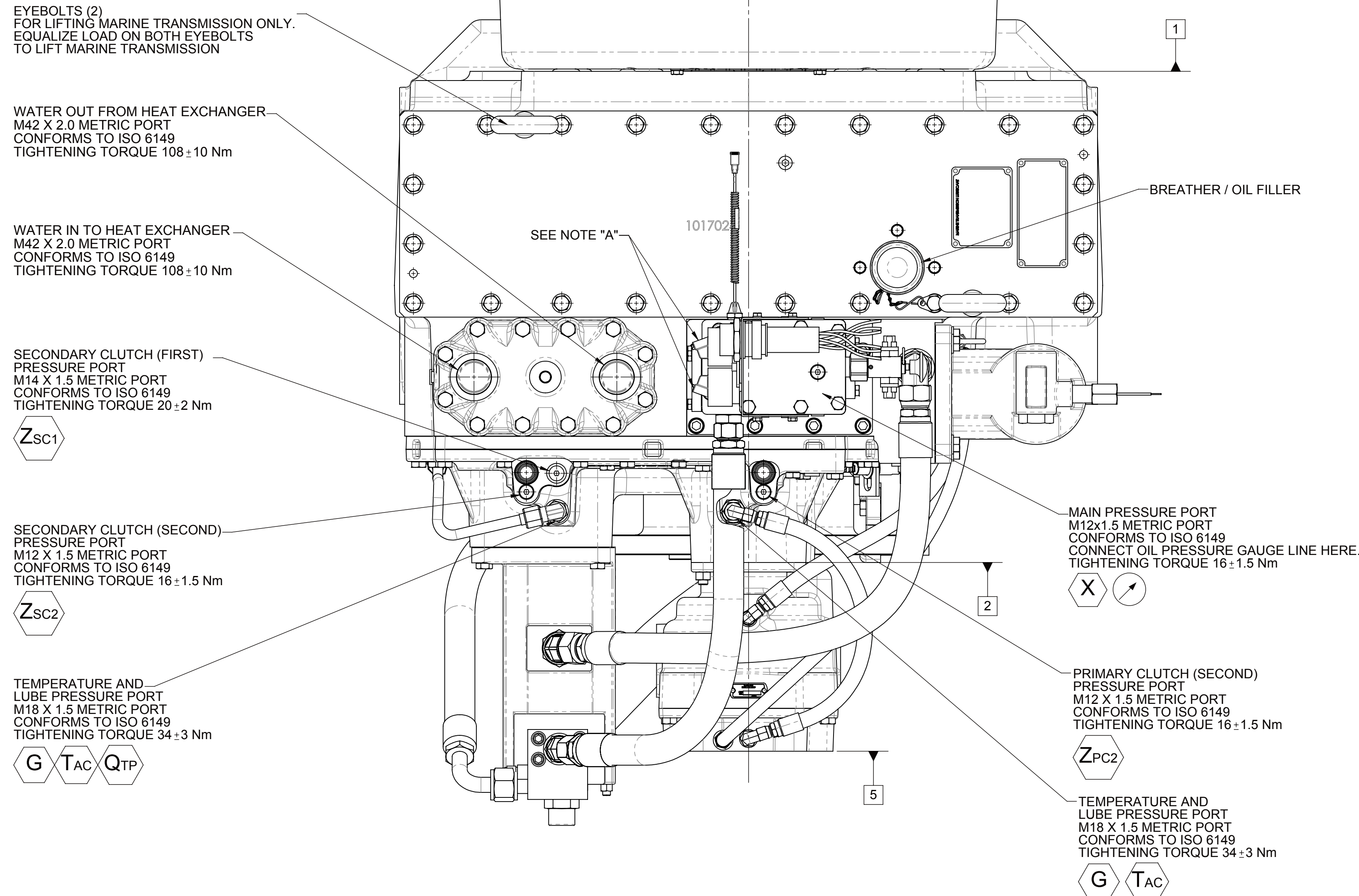


- A. PROPORTIONAL CONTROL VALVE OPERATION
 - 1. WARNING DO NOT CONNECT VALVE COIL DIRECTLY TO BATTERY / POWER SUPPLY OR VOLUNTARY CLUTCH.
 - 2. OPERATION TO BE PERFORMED WITH ONLY TWIN DISC CONTROL SYSTEMS OR MODULES.
- B. MANUAL DIRECTIONAL CONTROL VALVE OPERATION
 - 1. WITH MANUAL DIRECTIONAL CONTROL VALVE IN CENTERED POSITION, PUSH TO ENGAGE PRIMARY CLUTCH.
 - 2. WITH MANUAL DIRECTIONAL CONTROL VALVE IN CENTERED POSITION, PULL TO ENGAGE SECONDARY CLUTCH.
- C. MANUAL DIRECTIONAL CONTROL VALVE MODE SWITCH
 - 1. SWITCH IS NORMALLY CLOSED WHEN MANUAL DIRECTIONAL CONTROL VALVE IS IN THE CENTERED POSITION AND OPEN WHEN LEVER IS ACTUATED FROM CENTERED POSITION.
 - 2. CURRENT = 30 AMP.
 - 3. FOR WIRING SCHEMATIC, REFER TO EC650 CONTROL MODULE DRAWING.
- D. REFERENCE S930 FOR TWIN DISC REQUIREMENTS FOR PRESSURE AND TEMPERATURE ALARM LEVELS.

- | | |
|---|-------------------------------|
| 1 | INPUT GROUP REFERENCE PLANE |
| 2 | PTO ADAPTER MOUNTING FACE |
| 3 | LEFT MOUNTING BRACKET FACE |
| 4 | RIGHT MOUNTING BRACKET FACE |
| 5 | HYDRAULIC PTO PUMP MOUNT FACE |



ALL POINTS AVAILABLE FOR TESTING ARE CODED

EQUIPMENT SHOWN:

- MGX-5321DC PER 1022203B ASSEMBLY
- SAE#0 FRONT HOUSING
- GP VALVE WITH EC300 HARNESS
- RAW WATER HEAT EXCHANGER
- 1017820P SAE 127-2/4, 32-4 OR 38-4 HYDRAULIC PTO
- MOUNTED TRAILING PUMP
- PUMP GROUP FOR DP APPLICATIONS

