

A. PROPORTIONAL CONTROL VALVE OPERATION

1. WARNING DO NOT CONNECT VALVE COIL DIRECTLY TO BATTERY / POWER SUPPLY OR VOLUNTARY CLUTCH.
2. OPERATION TO BE PERFORMED WITH ONLY TWIN DISC CONTROL SYSTEMS OR MODULES.

B. MANUAL DIRECTIONAL CONTROL VALVE OPERATION

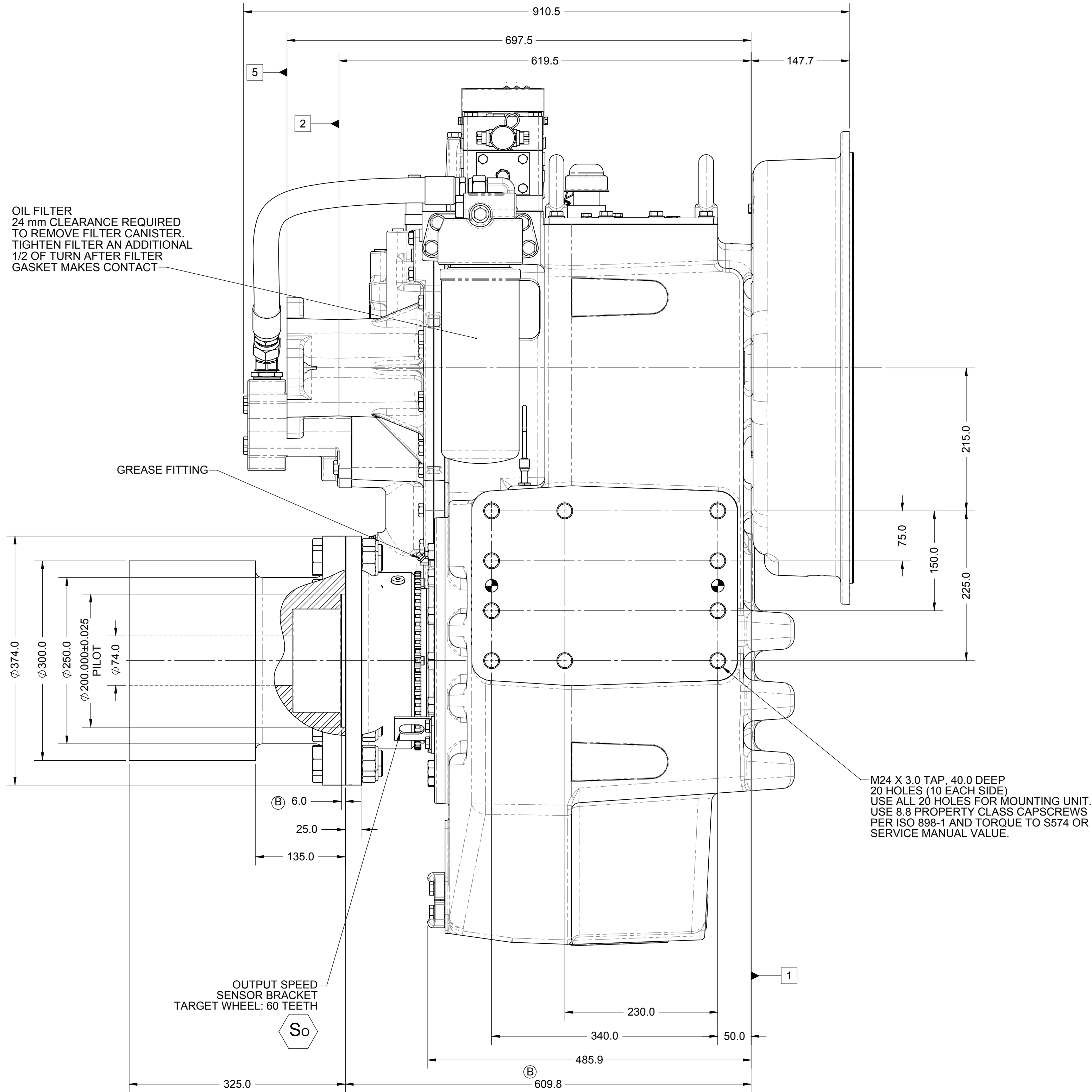
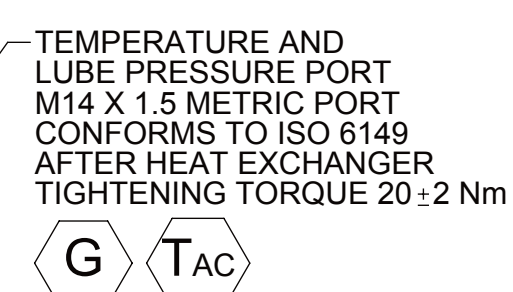
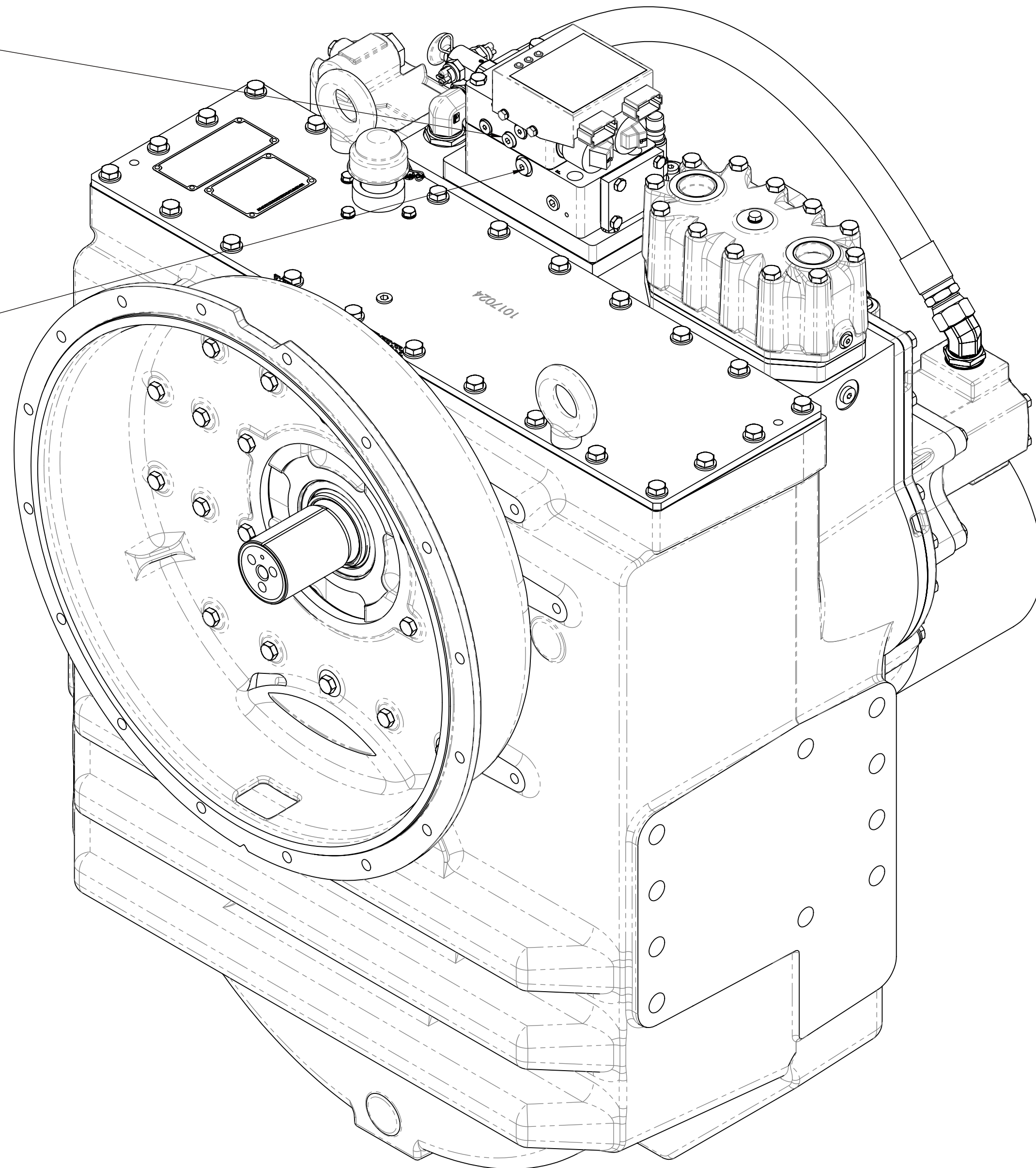
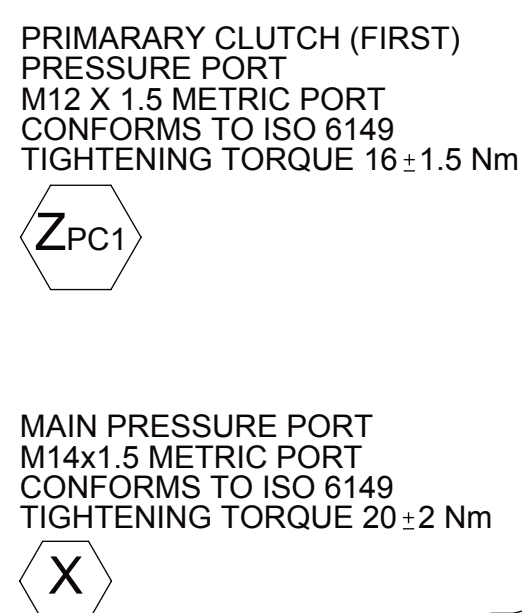
1. WITH MANUAL DIRECTIONAL CONTROL VALVE IN CENTERED POSITION, PUSH TO ENGAGE PRIMARY CLUTCH.
2. WITH MANUAL DIRECTIONAL CONTROL VALVE IN CENTERED POSITION, PULL TO ENGAGE SECONDARY CLUTCH.

C. MANUAL DIRECTIONAL CONTROL VALVE MODE SWITCH

1. SWITCH IS NORMALLY CLOSED WHEN MANUAL DIRECTIONAL CONTROL VALVE IS IN THE CENTER POSITION AND OPEN WHEN LEVER IS ACTUATED FROM CENTERED POSITION.
2. CURRENT = 30 AMP.
3. FOR WIRING SCHEMATIC, REFER TO EC650 CONTROL MODULE DRAWING.

D. REFERENCE S930 FOR TWIN DISC REQUIREMENTS FOR PRESSURE AND TEMPERATURE ALARM LEVELS.

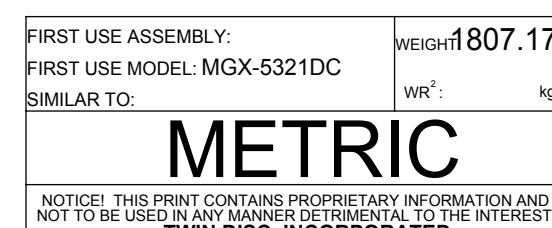
- | | |
|---|-----------------------------|
| 1 | INPUT GROUP REFERENCE PLANE |
| 2 | PTO ADAPTER MOUNTING FACE |
| 3 | LEFT MOUNTING BRACKET FACE |
| 4 | RIGHT MOUNTING BRACKET FACE |
| 5 | LIVE PTO PUMP MOUNT FACE |



ALL POINTS AVAILABLE FOR TESTING ARE CODED

EQUIPMENT SHOWN:

- MGX-5321DC PER 1022203B ASSEMBLY (A)
- SAE#0 FRONT HOUSING
- GP VALVE WITH EC050 MODULE
- RAW WATER HEAT EXCHANGER
- 1017084 COMPANION FLANGE ASSEMBLY
- LIVE SAE J744 127-2/4, 32-4 OR 127-2/4, 38-4 PTO



MATERIAL:	
HEAT TREAT:	
DESCRIPTION:	

INSTALLATION

DATE:	4/1
SCALE:	1
DRAWN:	M
CHECK:	A

013	
BY:	
C	

TWIN
MACHINE, WI 534
102606

SC.
3 - USA
4E

1025427W Rev. B