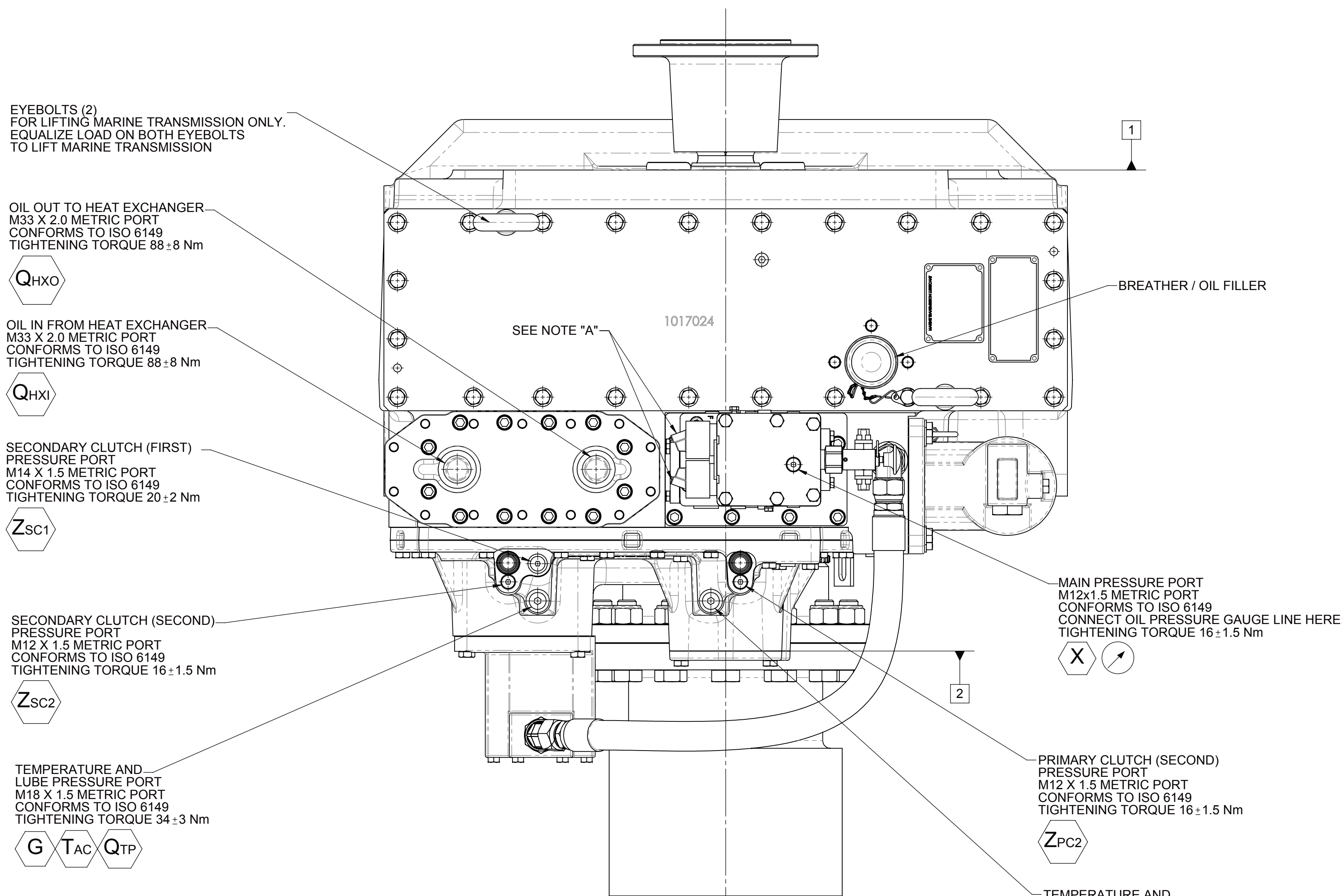


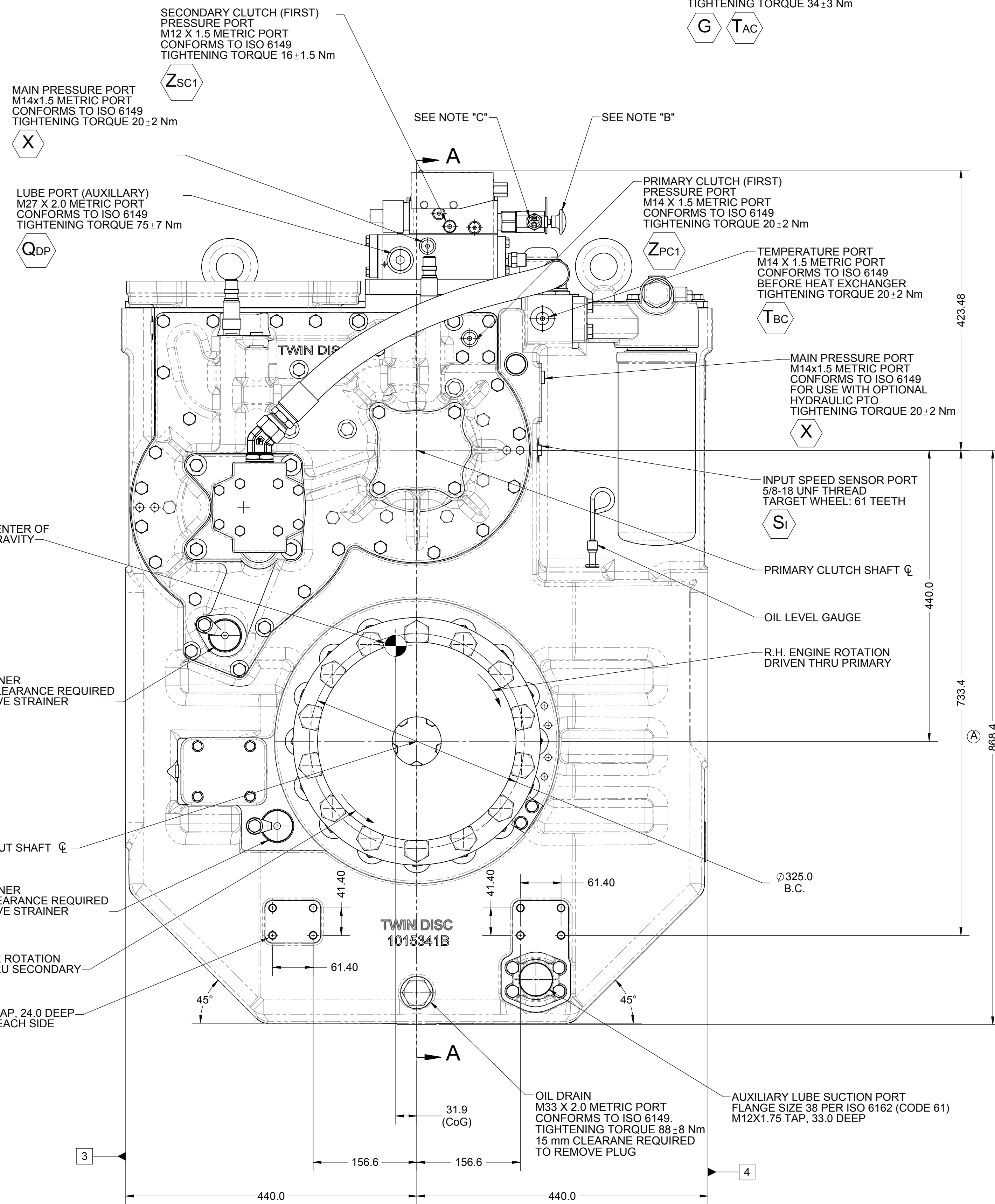
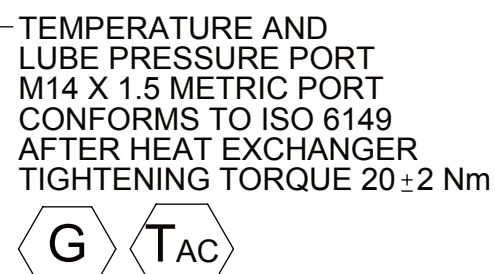
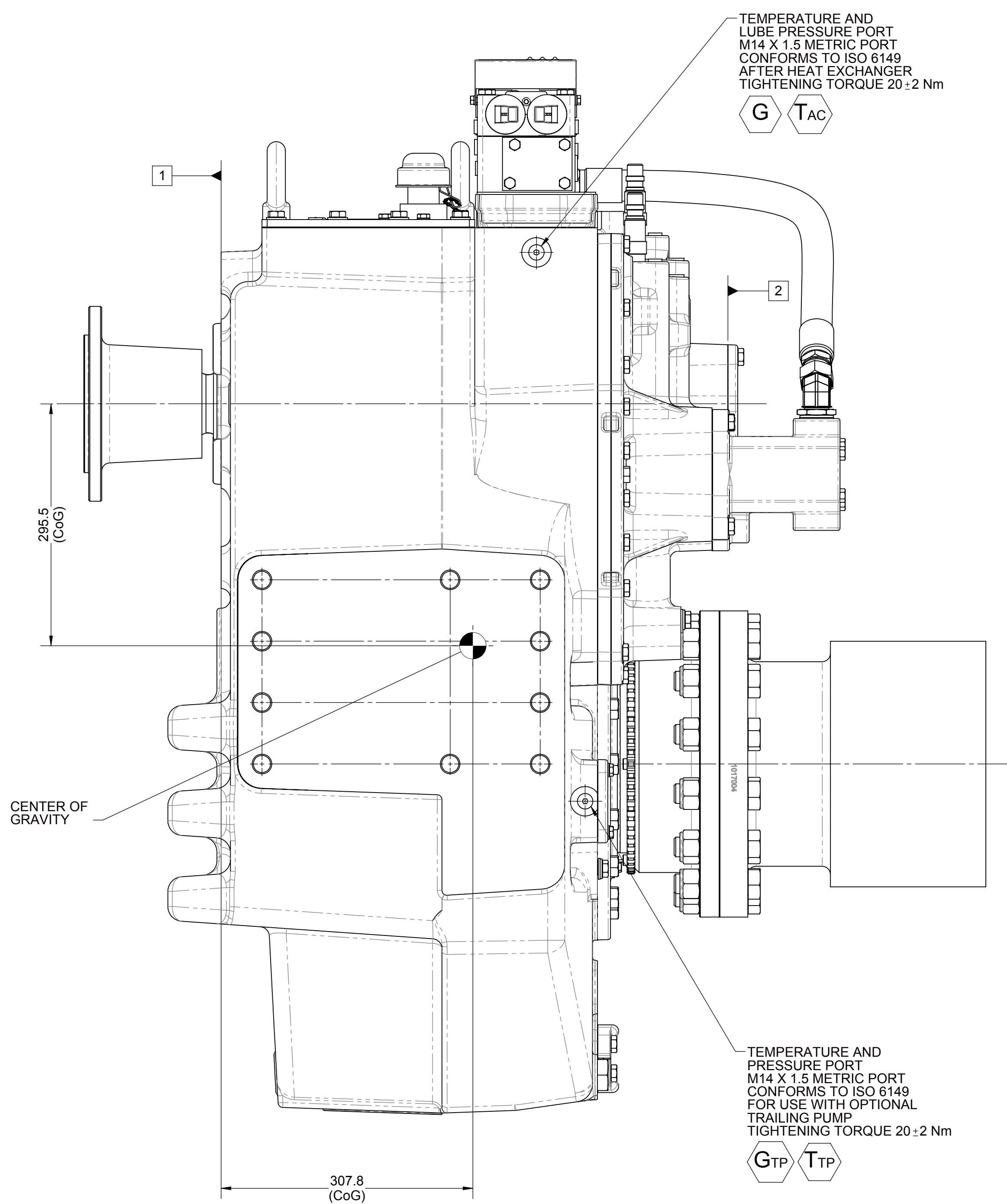
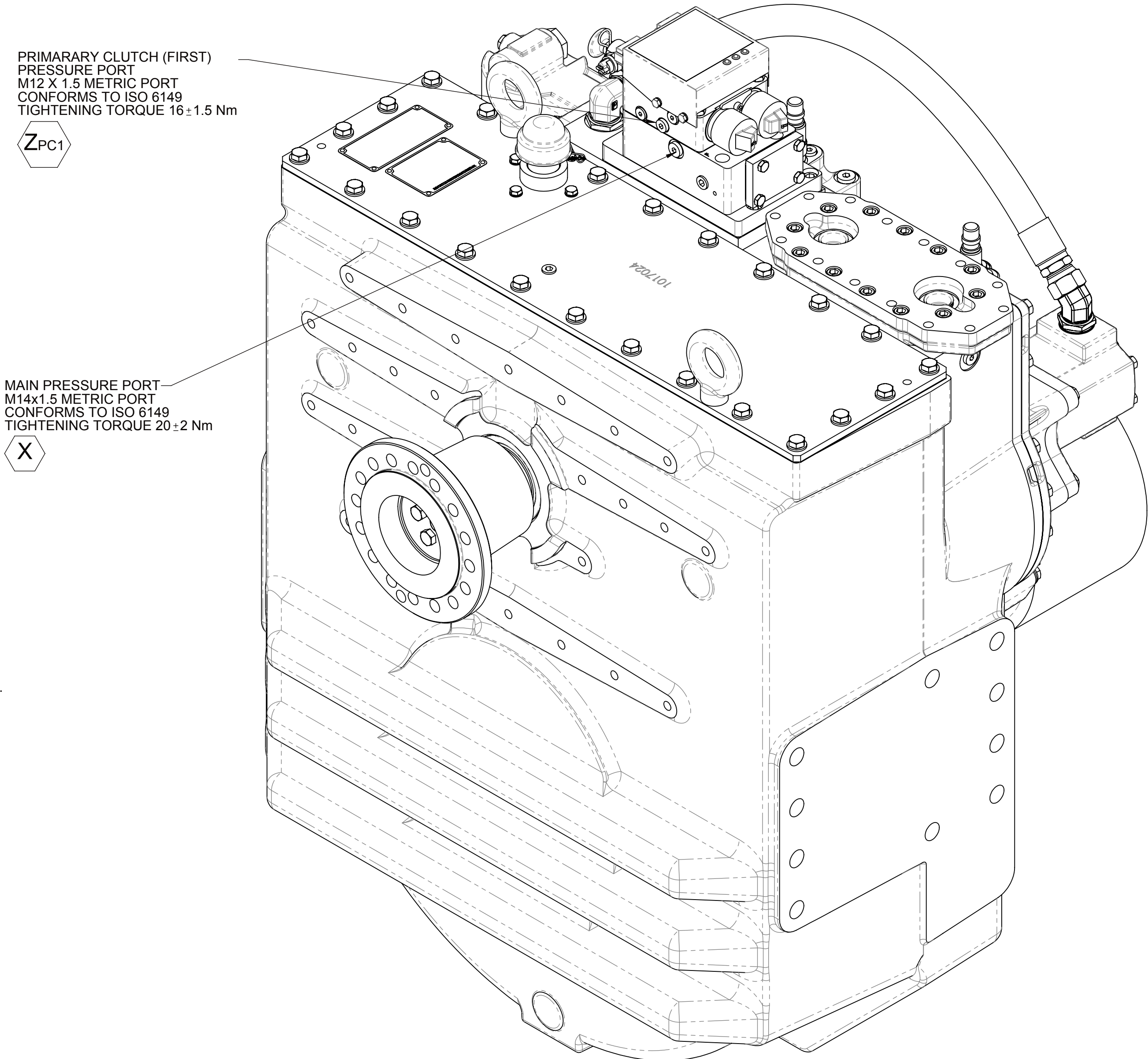
- A. PROPORTIONAL CONTROL VALVE OPERATION
  - 1. WARNING DO NOT CONNECT VALVE COIL DIRECTLY TO BATTERY / POWER SUPPLY VOLTAGE
  - 2. OPERATION TO BE PERFORMED WITH ONLY TWIN DISC CONTROL SYSTEMS OR MODULES.
- B. MANUAL DIRECTIONAL CONTROL VALVE OPERATION
  - 1. WITH MANUAL DIRECTIONAL CONTROL VALVE IN CENTERED POSITION, PUSH TO ENGAGE PRIMARY CLUTCH.
  - 2. WITH MANUAL DIRECTIONAL CONTROL VALVE IN CENTERED POSITION, PULL TO ENGAGE SECONDARY CLUTCH.
- C. MANUAL DIRECTIONAL CONTROL VALVE MODE SWITCH
  - 1. SWITCH IS NORMALLY CLOSED. MANUAL DIRECTIONAL CONTROL VALVE IS IN THE CENTERED POSITION AND OPEN WHEN LEVER IS ACTUATED FROM CENTERED POSITION.
  - 2. CURRENT = 20 AMPS MAX
  - 3. FOR WIRING SCHEMATIC, REFER TO EC050 CONTROL MODULE DRAWING.
- D. REFERENCE S930 FOR TWIN DISC REQUIREMENTS FOR PRESSURE AND TEMPERATURE ALARM LEVELS.

- |   |                             |
|---|-----------------------------|
| 1 | INPUT GROUP REFERENCE PLANE |
| 2 | PTO ADAPTER MOUNTING FACE   |
| 3 | LEFT MOUNTING BRACKET FACE  |
| 4 | RIGHT MOUNTING BRACKET FACE |

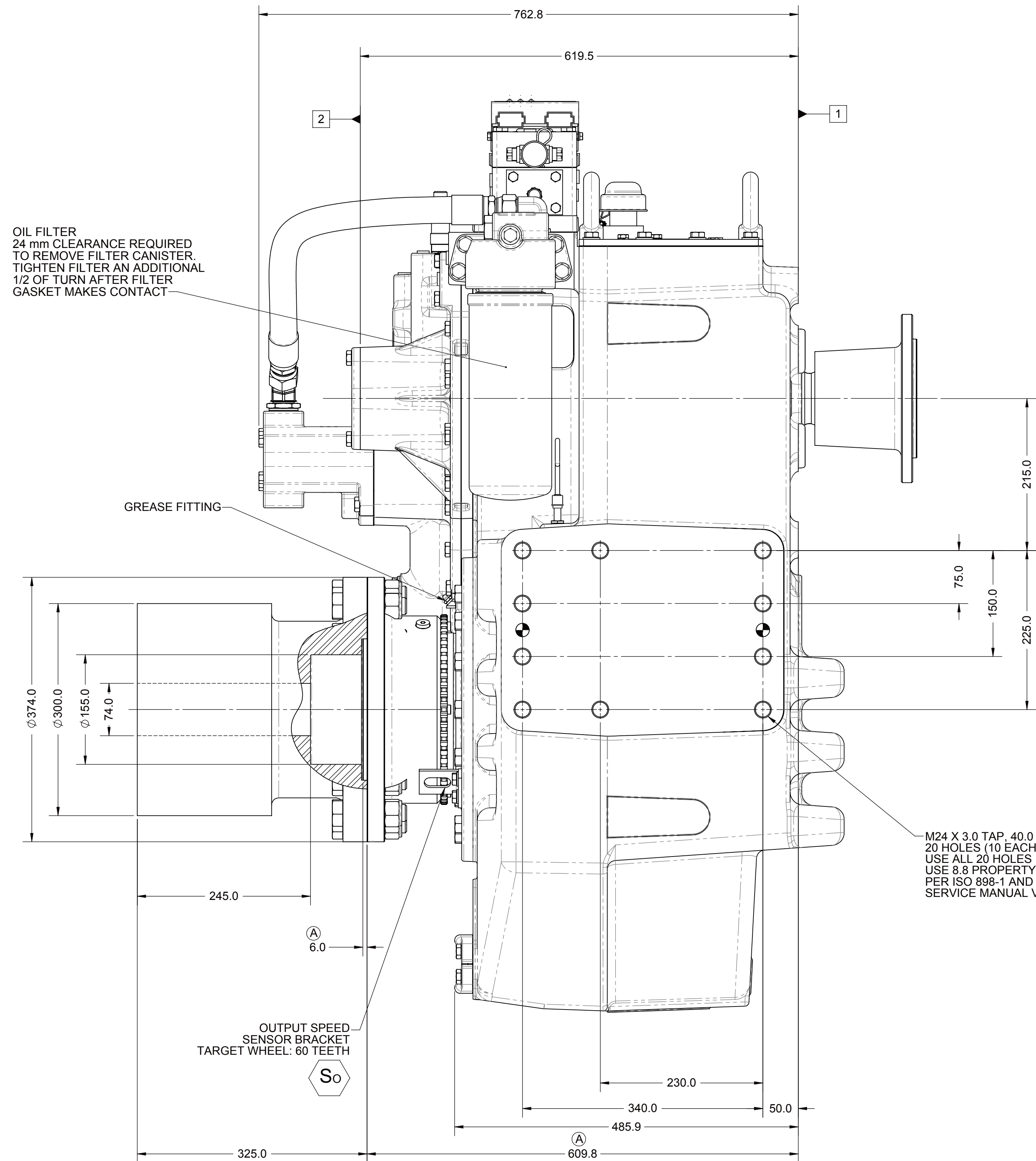


PRIMARY CLUTCH (FIRST)  
PRESSURE PORT  
M12 X 1.5 METRIC PORT  
CONFORMS TO ISO 6149  
TIGHTENING TORQUE  $16 \pm 1.5$  Nm

MAIN PRESSURE PORT  
M14x1.5 METRIC PORT  
CONFORMS TO ISO 6149  
TIGHTENING TORQUE  $20 \pm 2$  Nm



OIL FILTER  
24 mm CLEARANCE REQUIRED  
TO REMOVE FILTER CANISTER.  
TIGHTEN FILTER AN ADDITIONAL  
1/2 OF TURN AFTER FILTER  
GASKET MAKES CONTACT

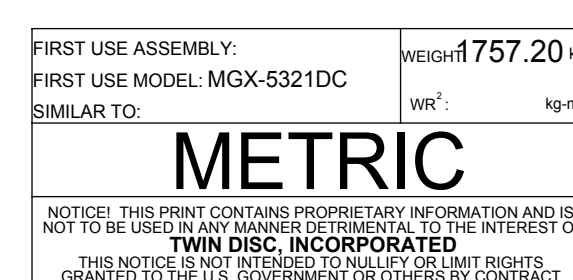


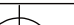
-M24 X 3.0 TAP, 40.0 DEEP  
20 HOLES (10 EACH SIDE)  
USE ALL 20 HOLES FOR MOUNTING UNIT.  
USE 8.8 PROPERTY CLASS CAPSCREWS  
PER ISO 898-1 AND TORQUE TO S574 OR  
SERVICE MANUAL VALUE.

ALL POINTS AVAILABLE FOR TESTING ARE CODED

**EQUIPMENT SHOWN:**


- MGX-5321DC PER 1022203B ASSEMBLY
- 1028325 FREESTANDING INPUT HUB FOR CENTA CX-67 SERIES COUPLINGS
- GP VALVE WITH EC050 MODULE
- DITCH PLATE FOR CUSTOMER SUPPLIED HEAT EXCHANGER
- 1017084 COMPANION FLANGE ASSEMBLY



 THIRD ANGLE PROJECTION	MATERIAL:
	HEAT TREAT:
UNLESS OTHERWISE SPECIFIED MACHINED DIMENSIONS X        ±0.75 XX     ±0.25 XXX    ±0.13 ALL ANGULAR TOLERANCES ±1° GEOMETRIC TOLERANCING PER ASME Y14.5M 1994	DESCRIPTION:

## INSTALLATION

### MGX-5321DC

	A	ECNWF-101878	11/17/2021
	REV	CHANGE NO.	DATE
DATE: 06/12/2013	 RACINE, WI 53403 - USA		
SCALE: 1:4			
DRAWN BY: PM			
CHECKED BY: ALC			
APPROVED BY: ALC	DWG SIZE:	SHEET: A0 1 OF 1	REV: A