

1 ENGINE MOUNTING FACE

2 PTO ADAPTER MOUNTING FACE

3 LEFT MOUNTING BRACKET FACE

4 RIGHT MOUNTING BRACKET FACE

NOTES:

A. PROPORTIONAL CONTROL VALVE OPERATION

1. WARNING DO NOT CONNECT VALVE COIL DIRECTLY TO BATTERY/POWER SUPPLY VOLTAGE.
2. OPERATION TO BE PERFORMED WITH ONLY TWIN DISC CONTROL SYSTEMS OR MODULES.

B. MANUAL DIRECTIONAL CONTROL VALVE OPERATION

1. WITH MANUAL DIRECTIONAL CONTROL VALVE IN CENTERED POSITION, PUSH TO ENGAGE PRIMARY CLUTCH.
2. WITH MANUAL DIRECTIONAL CONTROL VALVE IN CENTERED POSITION, PULL TO ENGAGE SECONDARY CLUTCH.

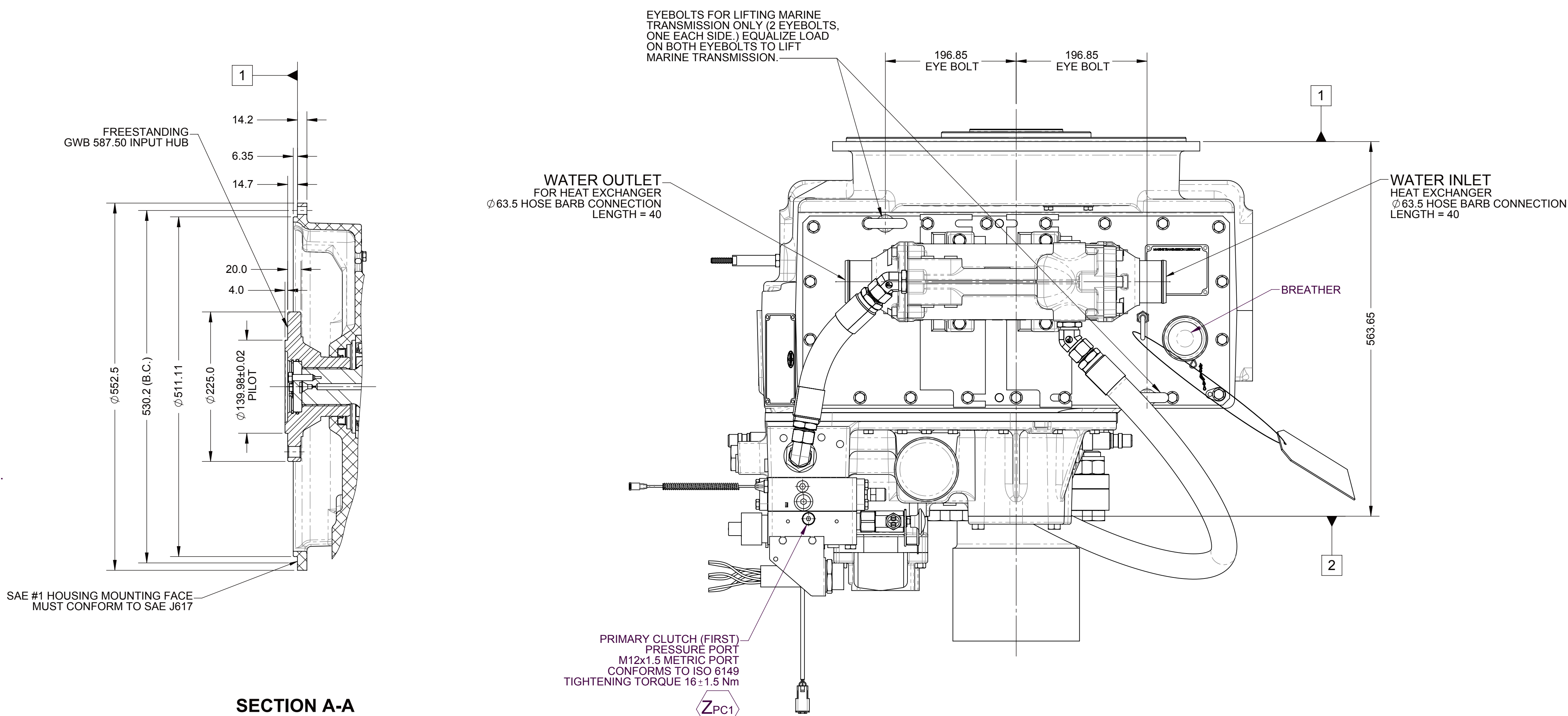
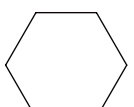
C. MANUAL DIRECTIONAL CONTROL VALVE MODE SWITCH

1. SWITCH IS NORMALLY CLOSED WHEN MANUAL DIRECTIONAL CONTROL VALVE IS IN THE CENTERED POSITION AND OPEN WHEN LEVER IS ACTUATED FROM CENTERED POSITION.
2. CURRENT = 20 AMP MAX.
3. FOR WIRING SCHEMATIC, REFER TO CONTROL MODULE DRAWING.

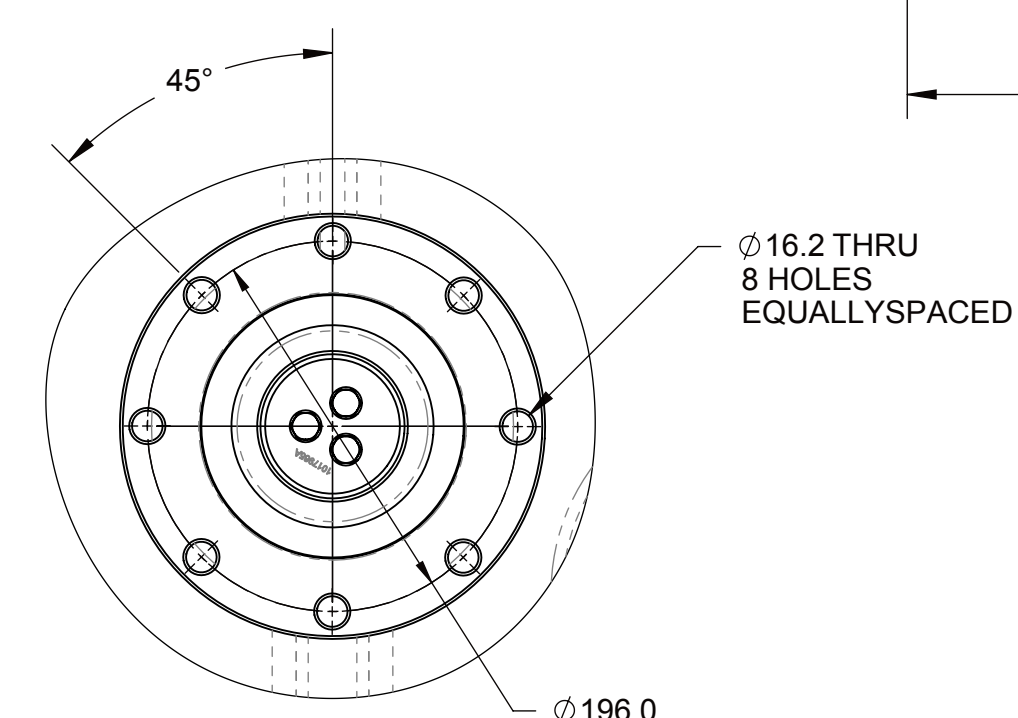
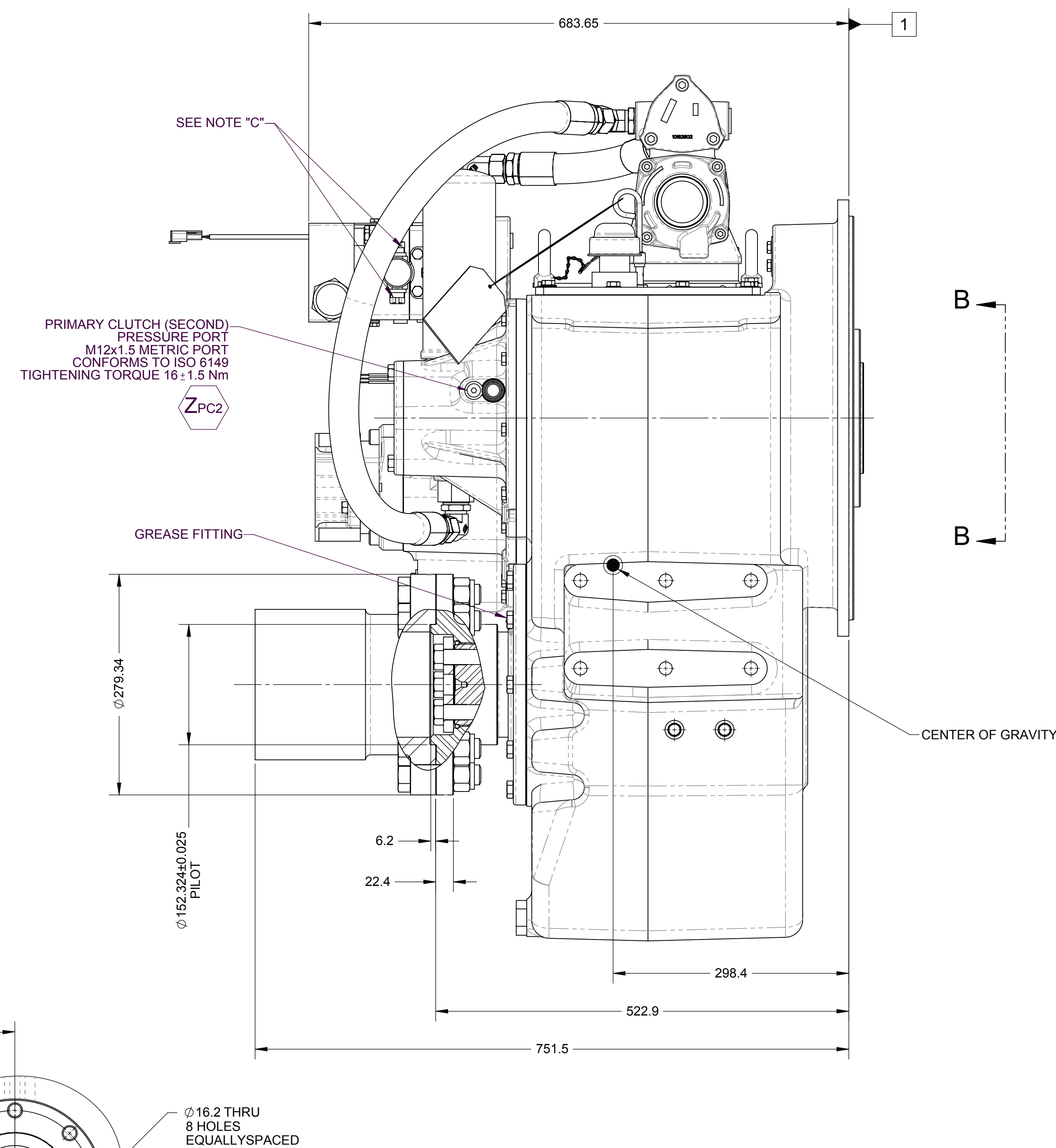
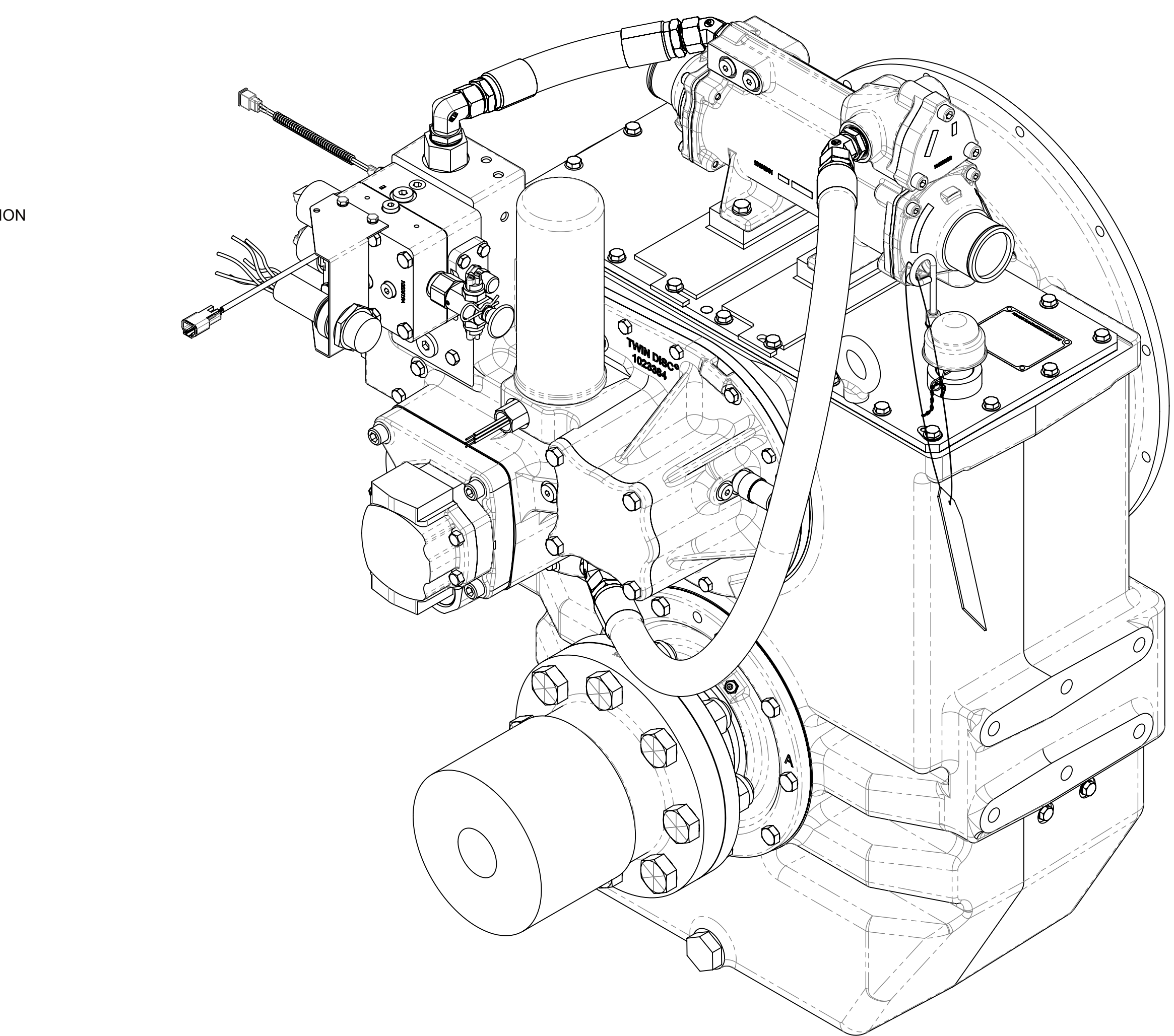
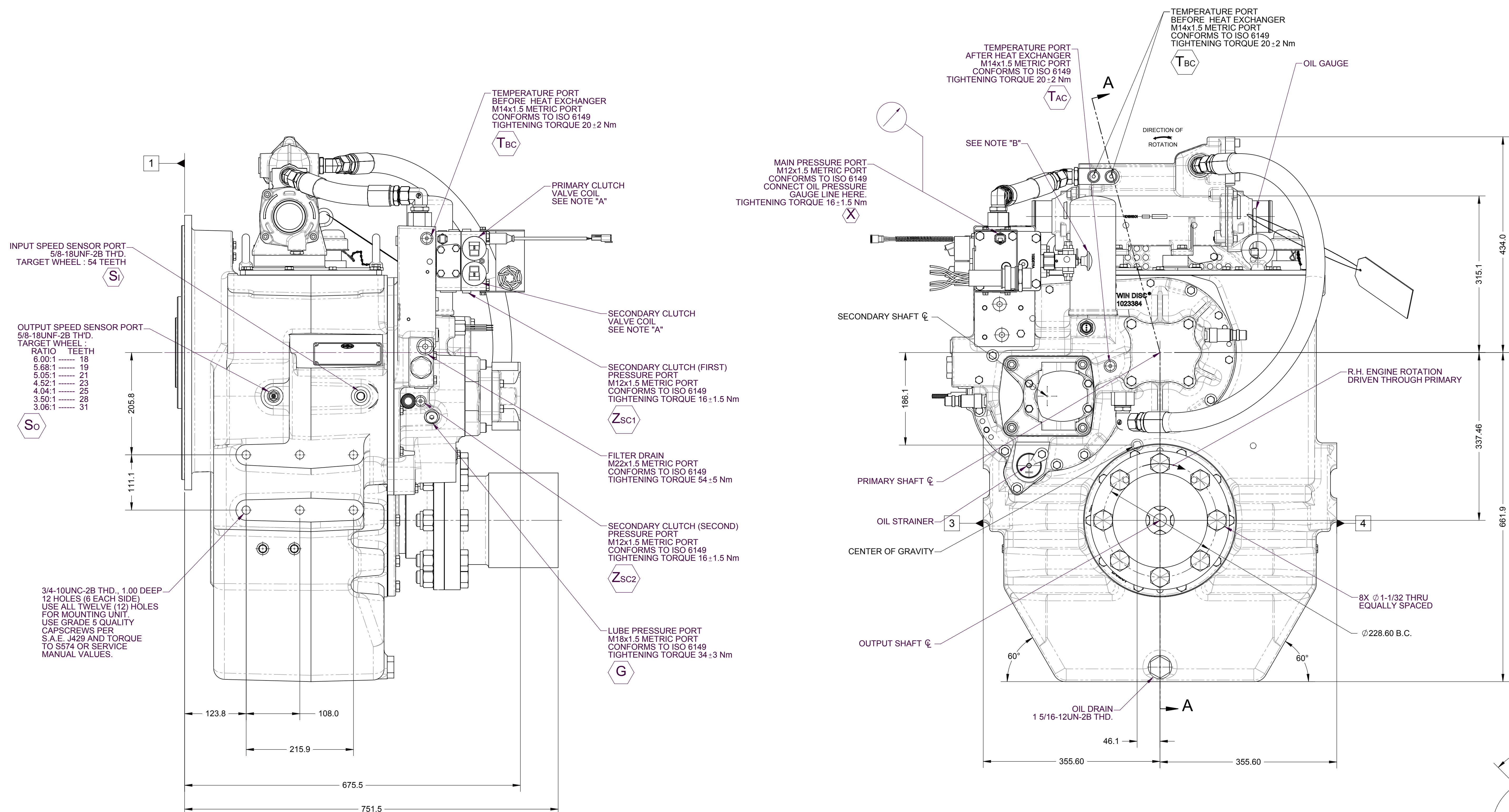
NOTES:

- REFERENCE S930 FOR TWIN DISC REQUIREMENTS FOR PRESSURE AND TEMPERATURE ALARM LEVELS.

- ALL POINTS AVAILABLE FOR TESTING ARE CODED



SECTION A-A



VIEW B-B

EQUIPMENT SHOWN:
- SAE #1 HOUSING
- 1023455E FREESTANDING INPUT GROUP
- GP VALVE WITH EC300/ EC300DP WIRING HARNESS
- 1071494 OUTPUT COMPANION FLANGE
- 1025122C HEAT EXCHANGER GROUP

[illegible]