

1 ENGINE MOUNTING FACE

2 PTO ADAPTER MOUNTING FACE

3 LEFT MOUNTING BRACKET FACE

4 RIGHT MOUNTING BRACKET FACE

NOTES:

A. PROPORTIONAL CONTROL VALVE OPERATION

1. WARNING DO NOT CONNECT VALVE COIL DIRECTLY TO BATTERY/POWER SUPPLY VOLTAGE.
2. OPERATION TO BE PERFORMED WITH ONLY TWIN DISC CONTROL SYSTEMS OR MODULES.

B. MANUAL DIRECTIONAL CONTROL VALVE OPERATION

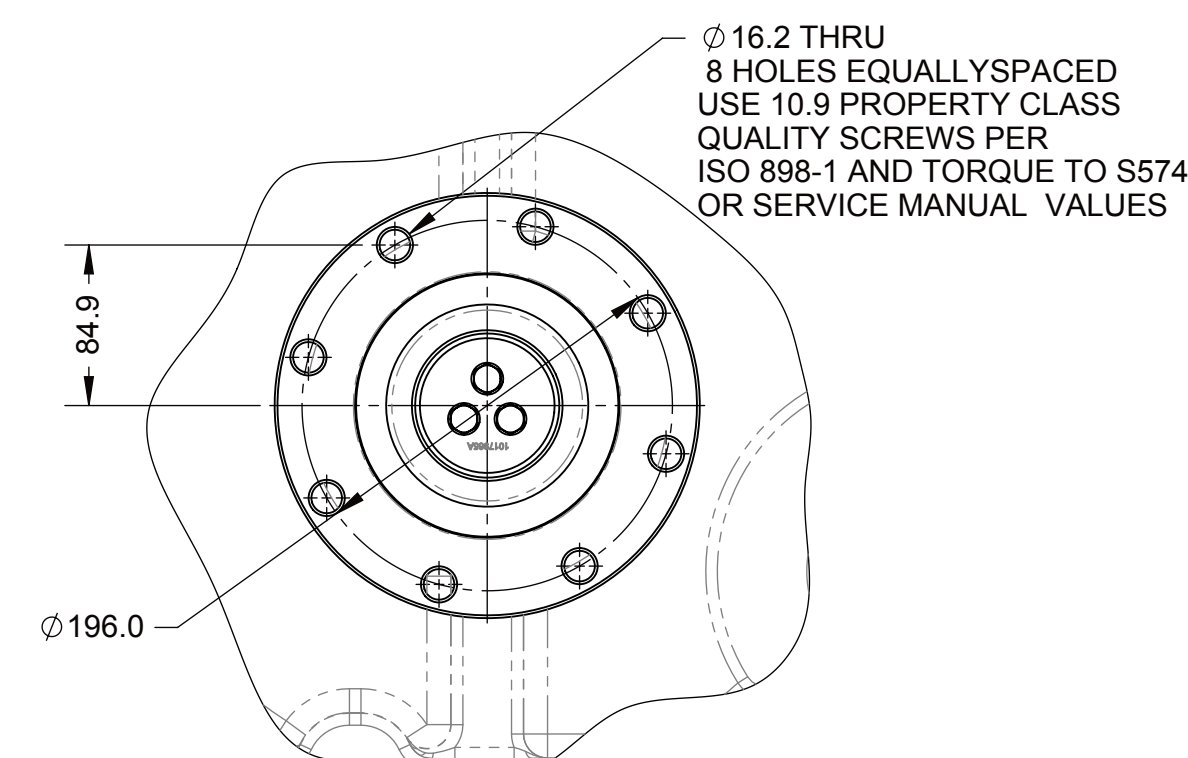
1. WITH MANUAL DIRECTIONAL CONTROL VALVE IN CENTERED POSITION, PUSH TO ENGAGE PRIMARY CLUTCH.
2. WITH MANUAL DIRECTIONAL CONTROL VALVE IN CENTERED POSITION, PULL TO ENGAGE SECONDARY CLUTCH.

- C. MANUAL DIRECTIONAL CONTROL VALVE MODE SWITCH
 1. SWITCH IS NORMALLY CLOSED WHEN MANUAL DIRECTIONAL CONTROL VALVE IS IN THE CENTERED POSITION AND OPEN WHEN LEVER IS ACTUATED FROM CENTERED POSITION.
 2. CURRENT = 20 AMP MAX.
 3. FOR WIRING SCHEMATIC, REFER TO CONTROL MODULE DRAWING.

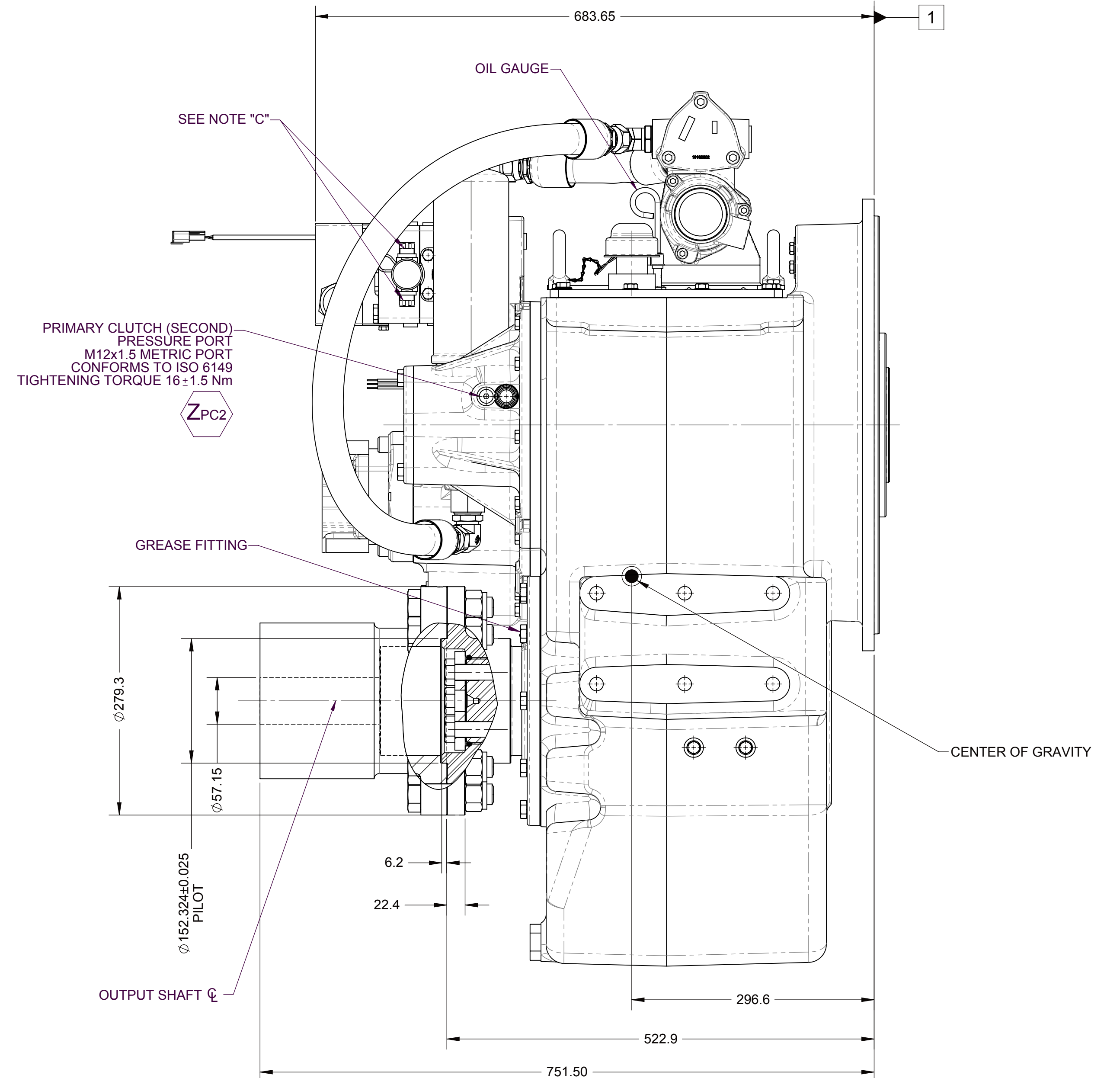
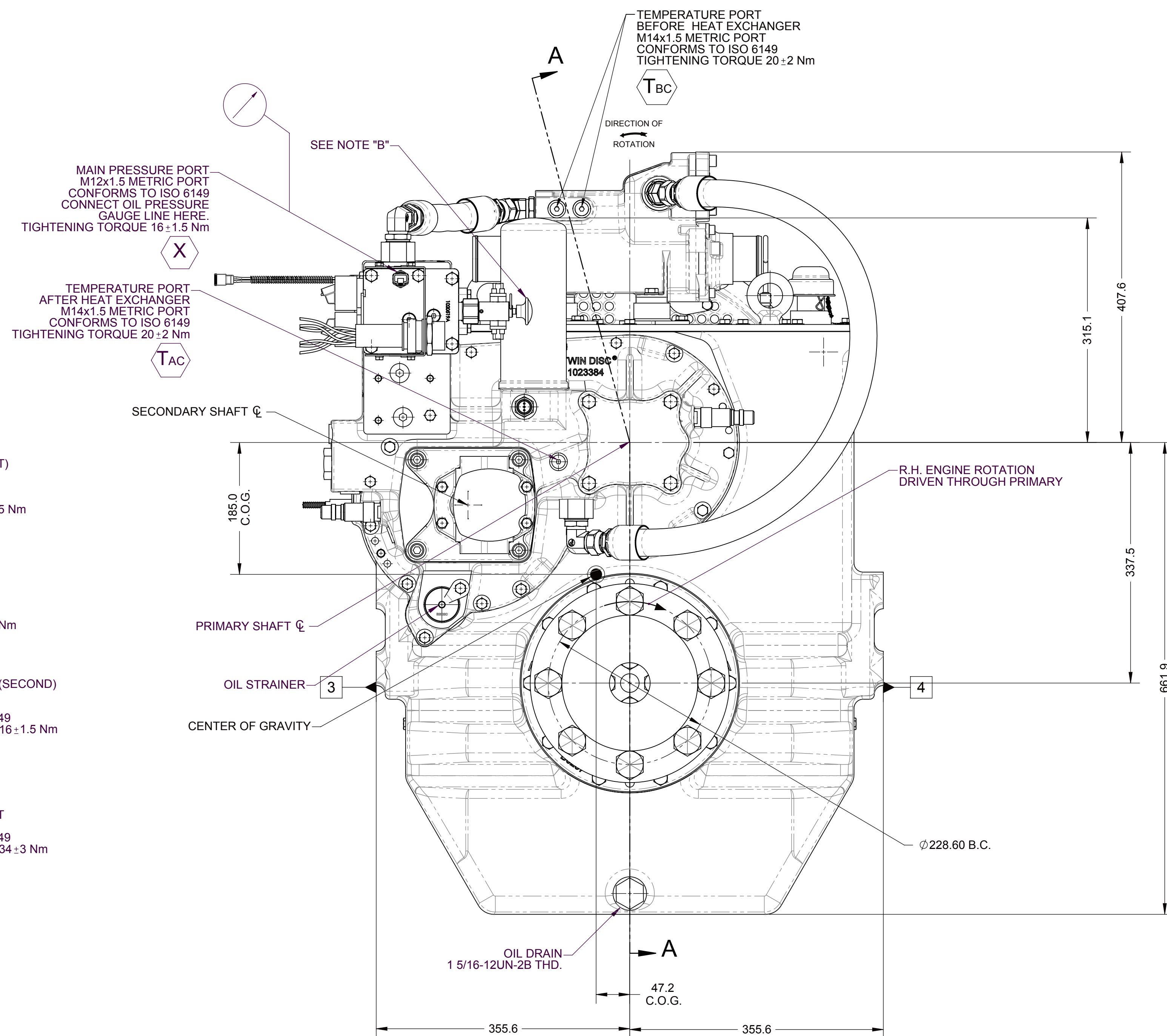
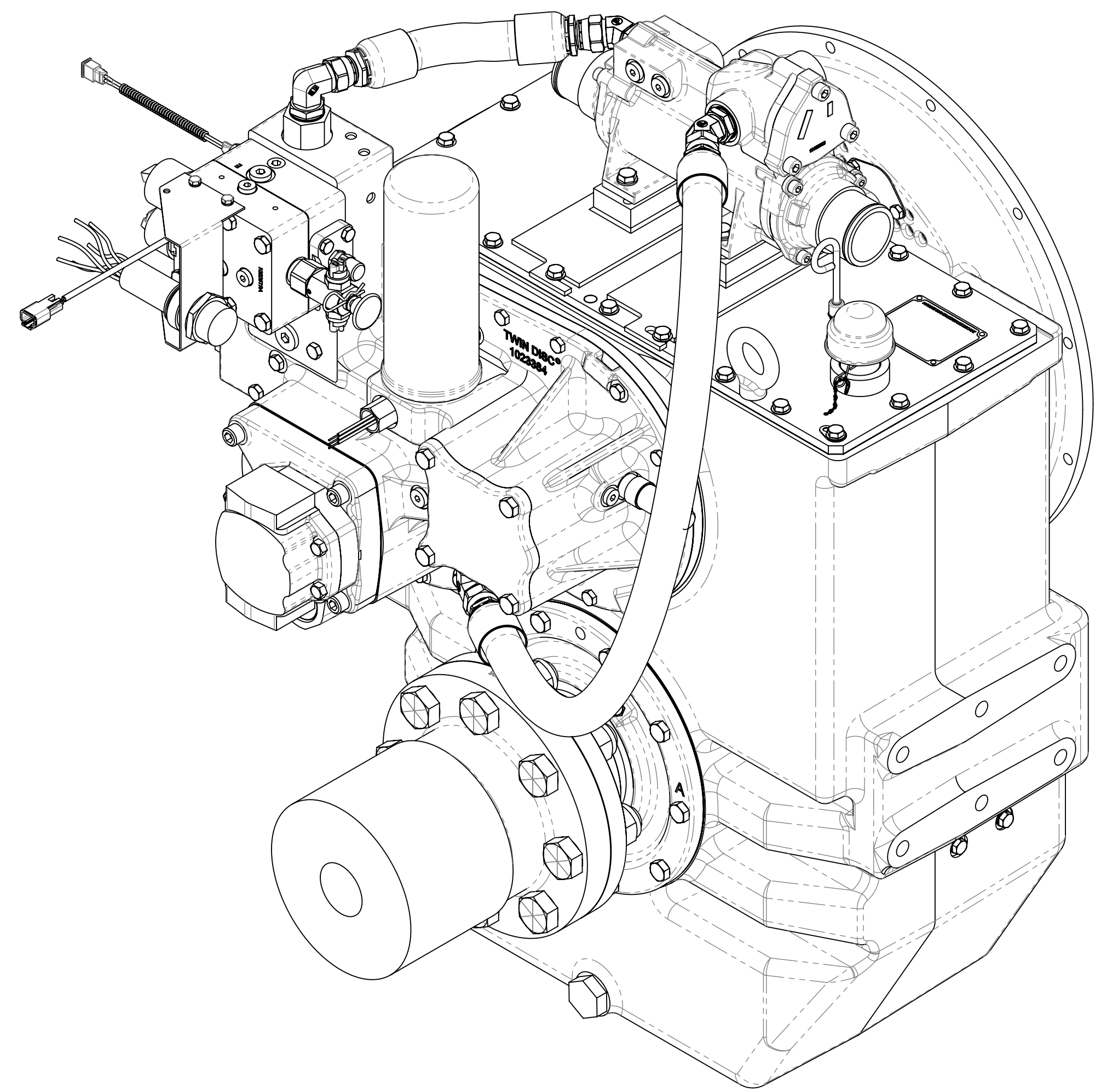
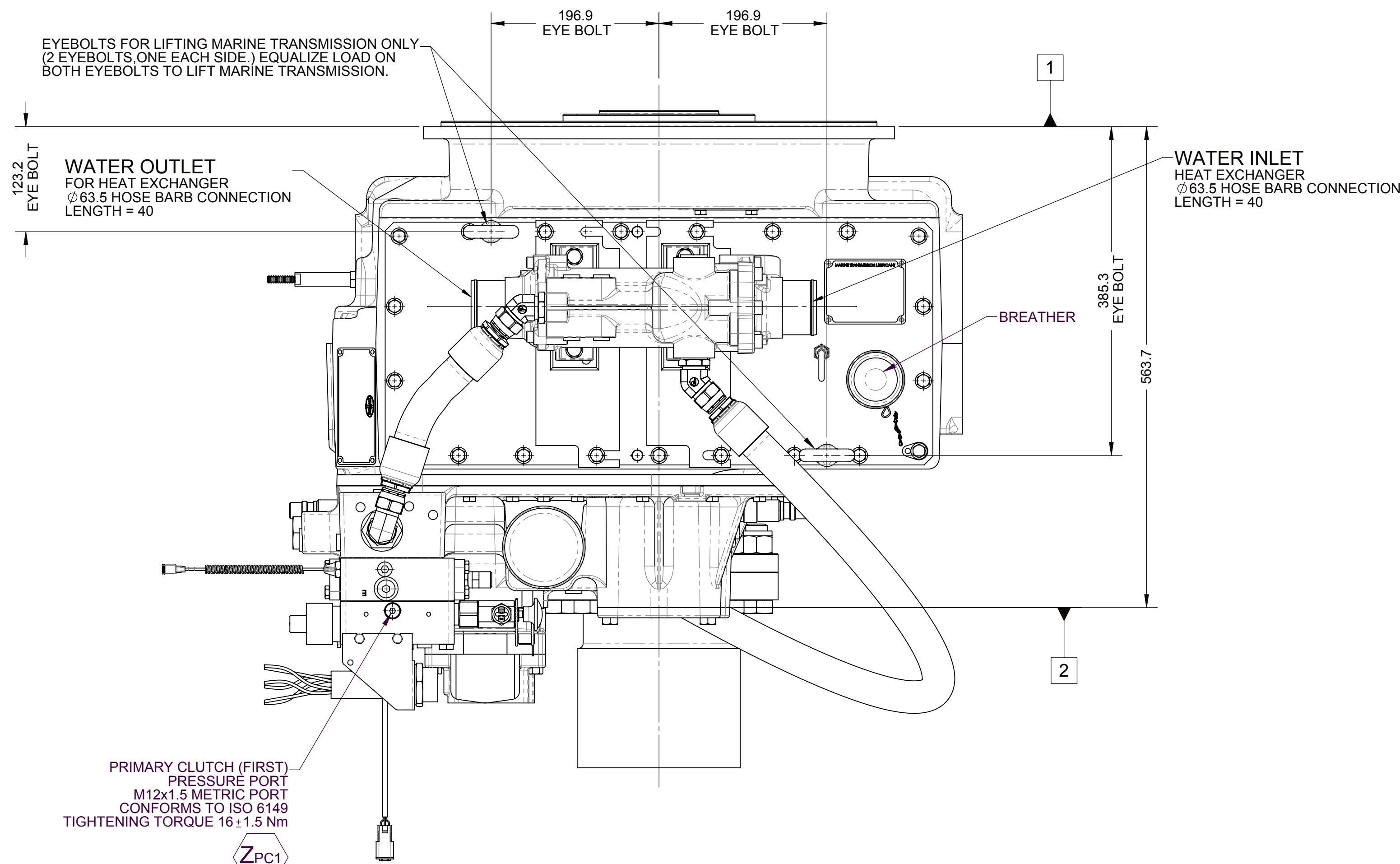
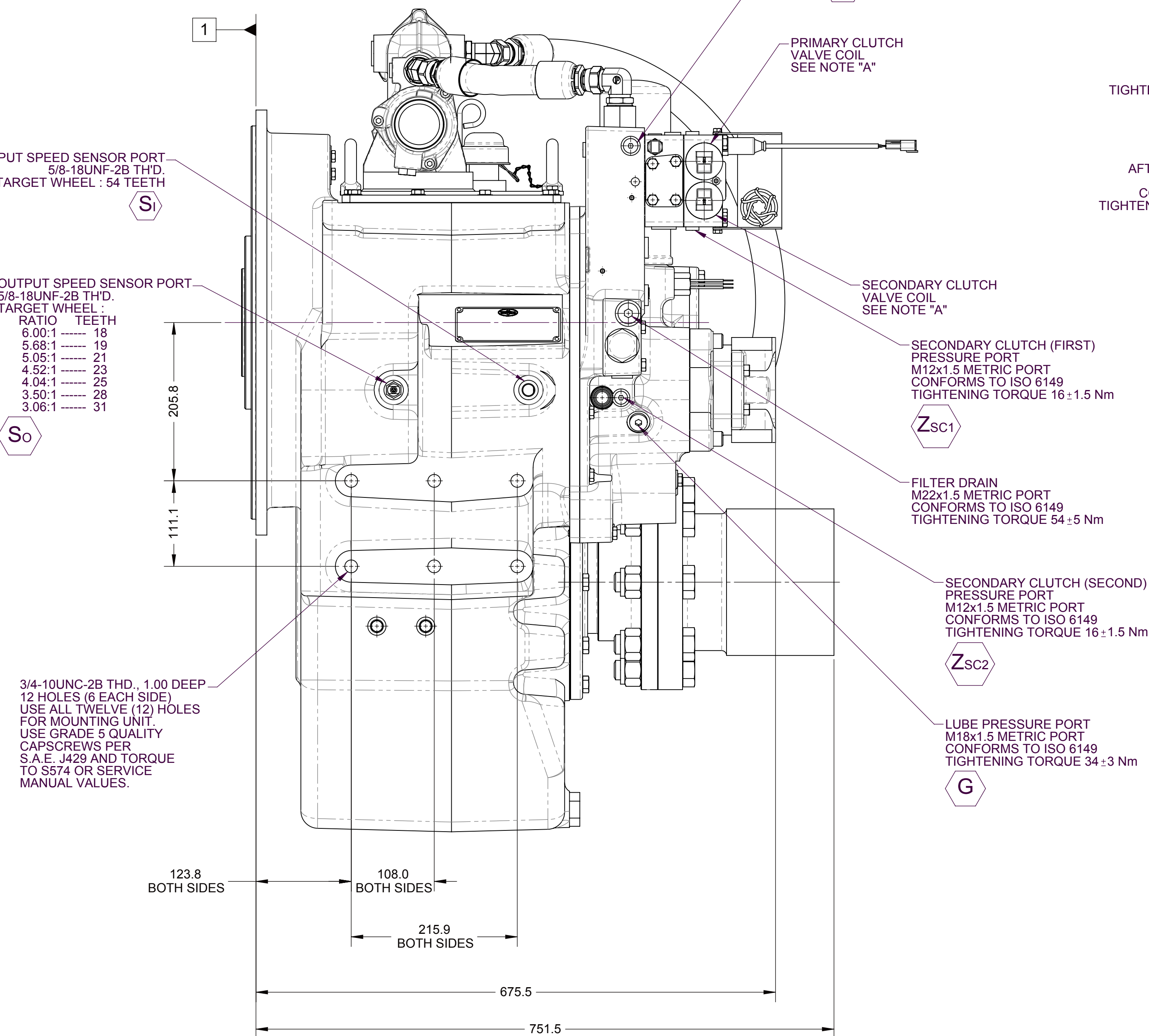
NOTES:

- REFERENCE S930 FOR TWIN DISC REQUIREMENTS FOR PRESSURE AND TEMPERATURE ALARM LEVELS.

- ALL POINTS AVAILABLE FOR TESTING ARE CODED





VIEW B-B



EQUIPMENT SHOWN:

EQUIPMENT SHOWN:

- SAE #1 HOUSING
- 1023455E FREESTANDING INPUT GROUP
- GP VALVE WITH EC300/ EC300DP WIRING HARNESS
- 1017494 OUTPUT COMPANION FLANGE
- 10251232 VALVE EXHAUSTION GROUP

1026122D HEAT EXCHANGER GROUP		DATE: 05/10/2016			
FIRST USE ASSEMBLY: FIRST MODEL: MCG-516 SIMILAR TO: 1026197C		HCU/RT: N HCU/RT: N	MATERIAL:  THIRD ANGLE PROJECTION	SCALE: 1:4 DRAWN BY: YJ CHECKED BY: YJ APPROVED BY: DV	
HEAT TREAT:		DESCRIPTION:		RACINE, WI 53403 - USA 1026197D	
UNLESS OTHERWISE SPECIFIED, ALL DIMENSIONS ARE IN INCHES. X.X .XX .0025 X.XX .0050 X.XXX .0075 ALL ANGLE TOLERANCES ±1° UNLESS OTHERWISE SPECIFIED. PER ASME Y14 M99		INSTALLATION MARINE, MCG-516		DWG SIZE: A0 SHEET: 1 OF 1 REV:	