

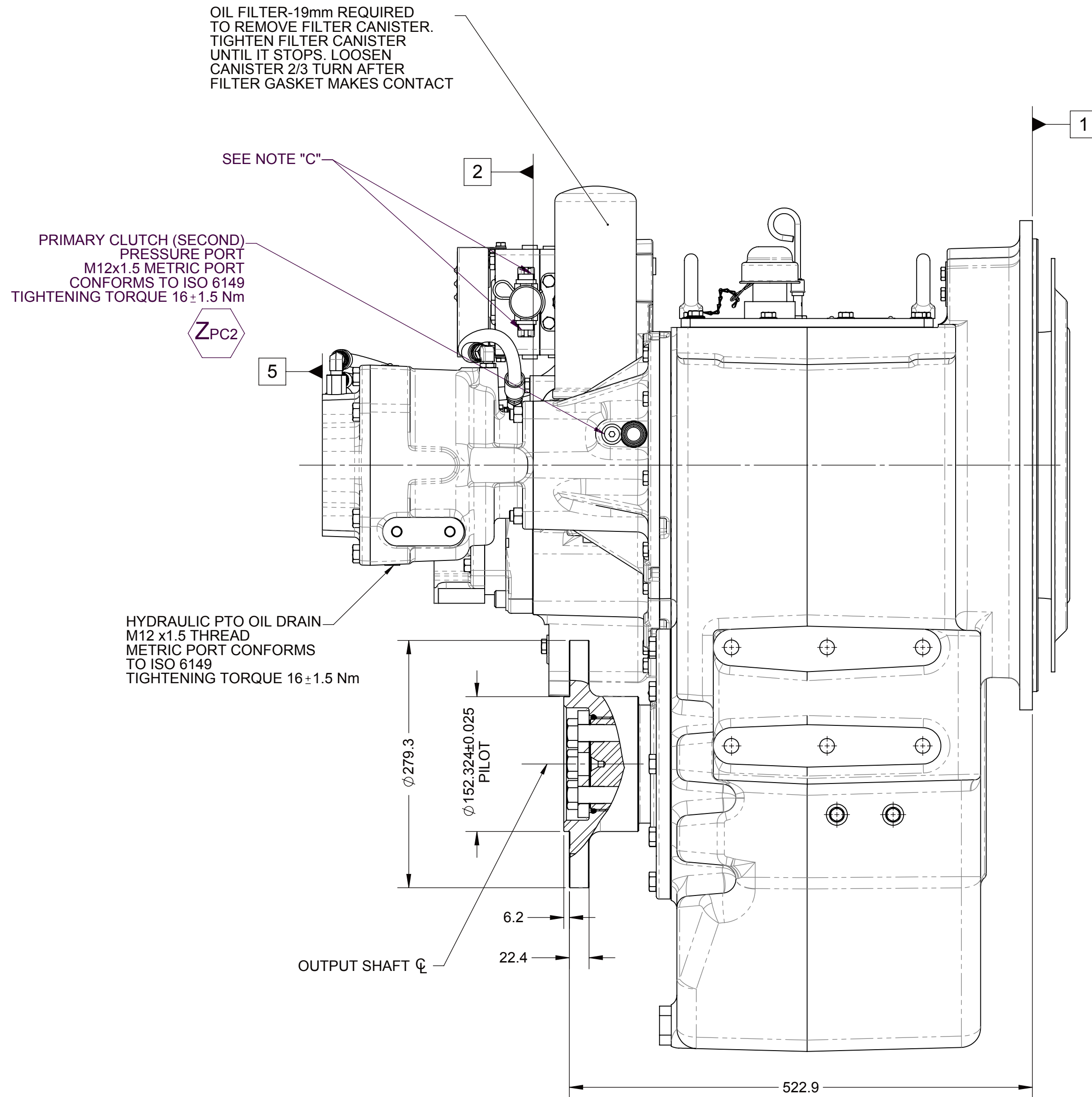
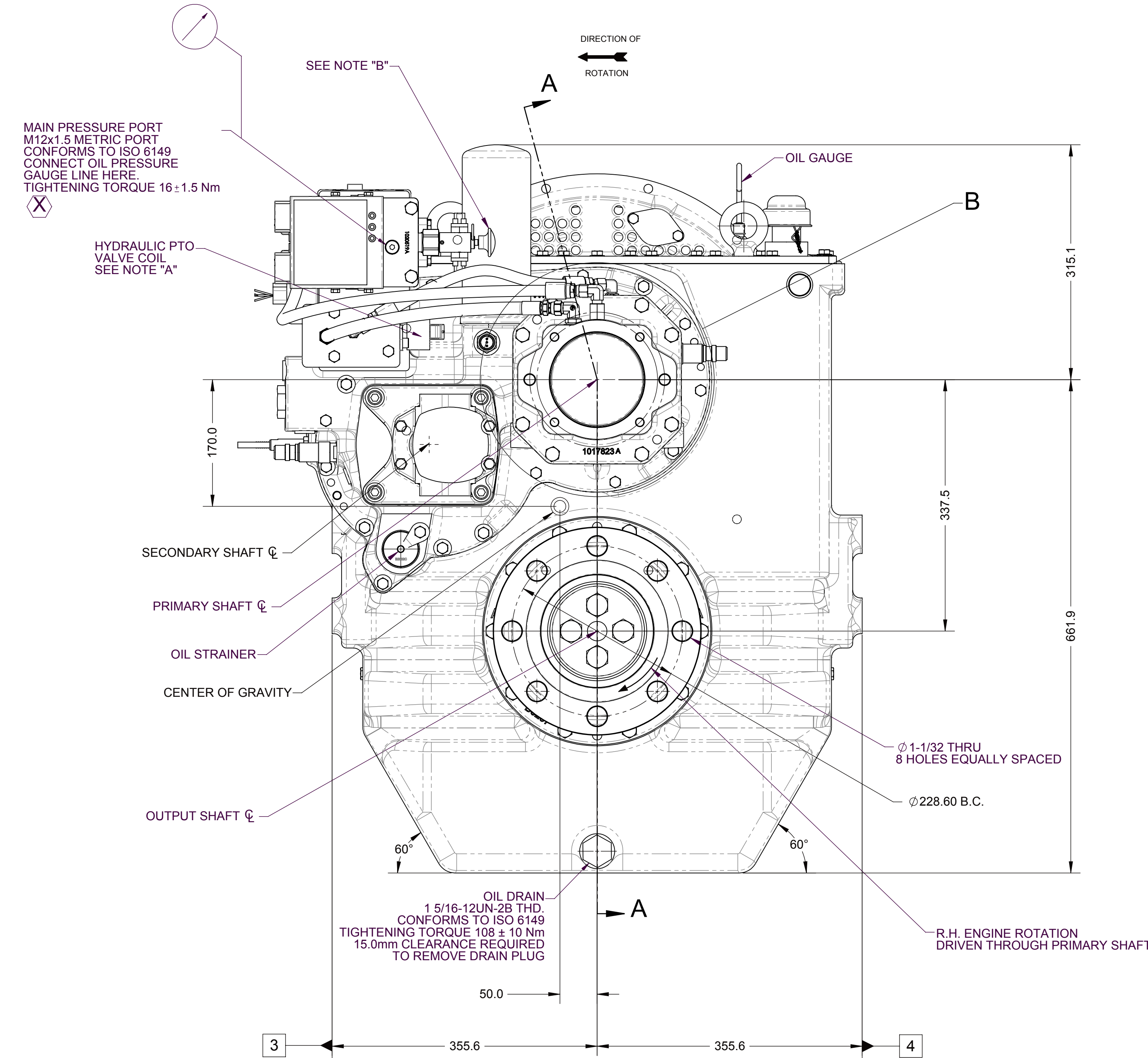
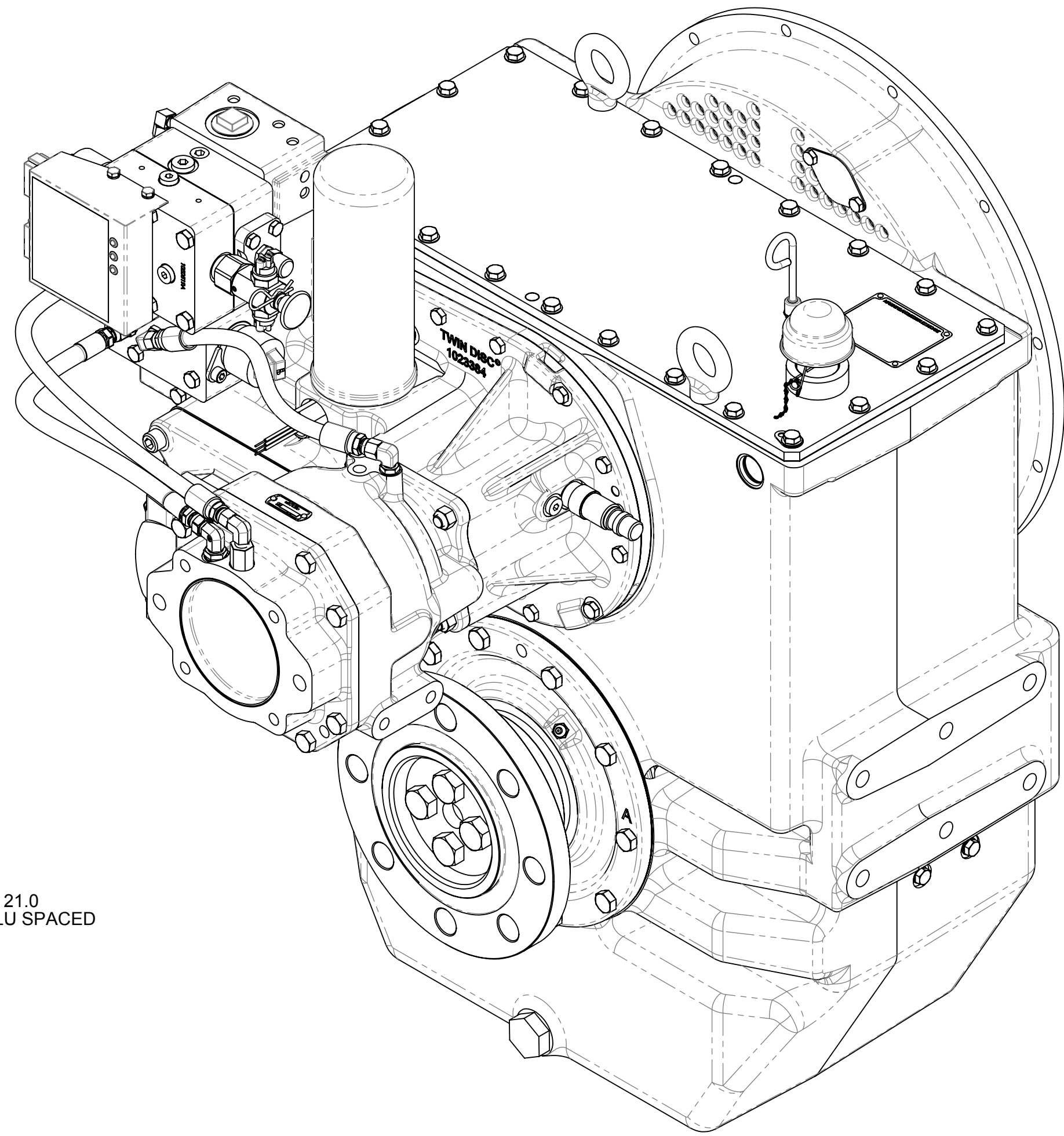
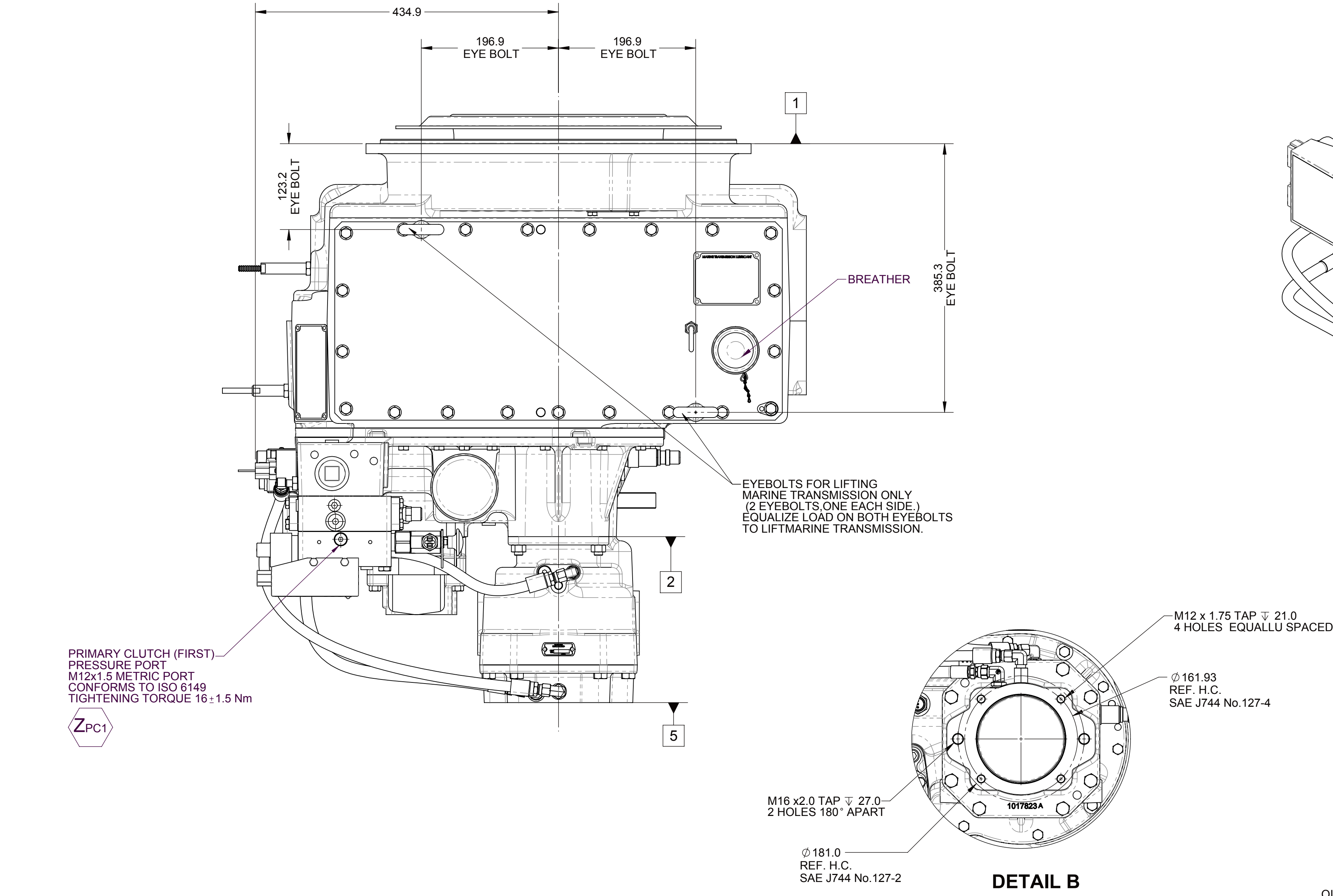
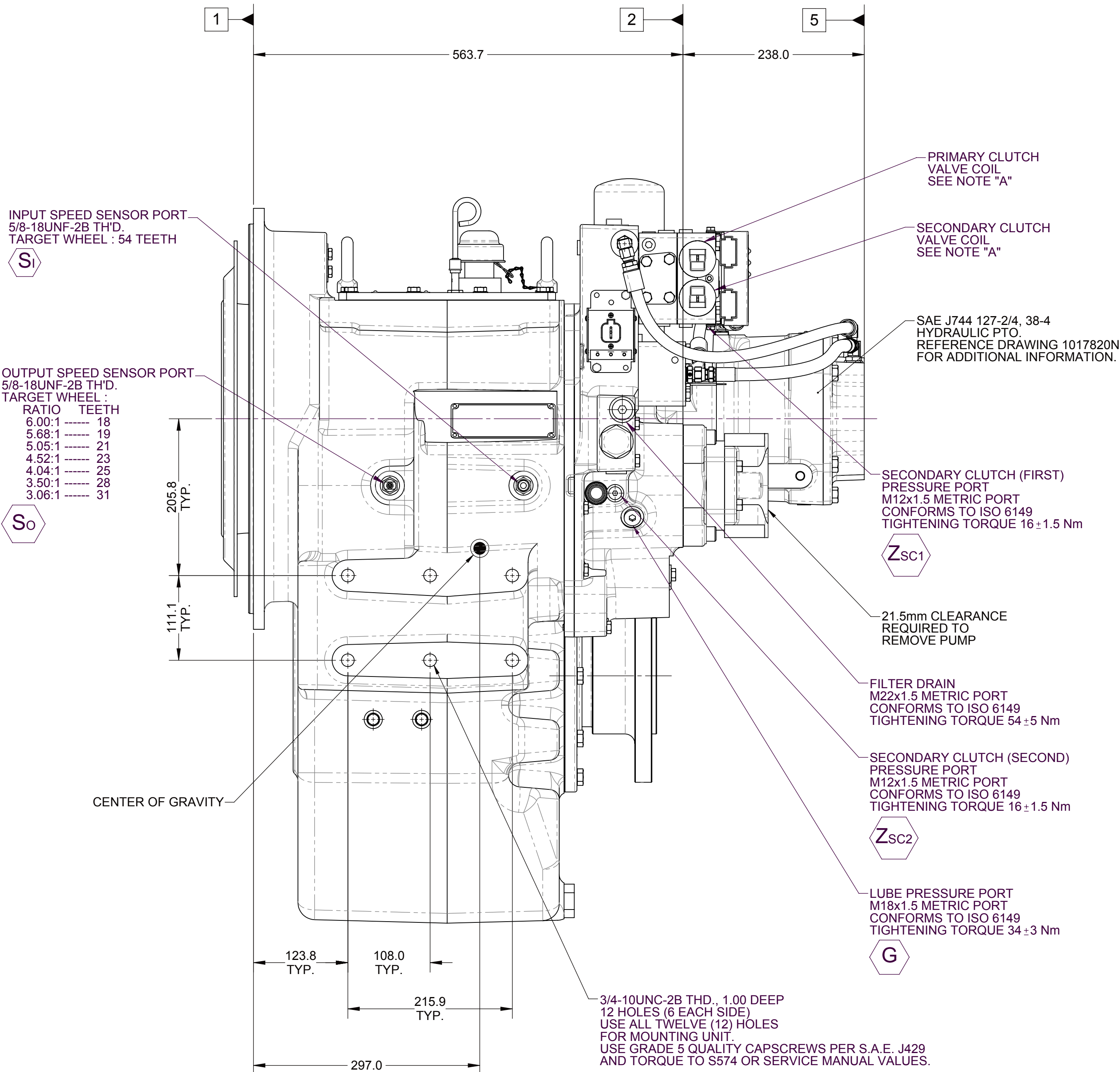
- 1ENGINE MOUNTING FACE
- 2PTO ADAPTER MOUNTING FACE
- 3LEFT MOUNTING BRACKET FACE
- 4RIGHT MOUNTING BRACKET FACE
- 5PUMP MOUNTING FACE

NOTES:

- A. PROPORTIONAL CONTROL VALVE OPERATION
1. WARNING DO NOT CONNECT VALVE COIL DIRECTLY TO BATTERY/POWER SUPPLY VOLTAGE.
2. OPERATION TO BE PERFORMED WITH ONLY TWIN DISC CONTROL SYSTEMS OR MODULES.
- B. MANUAL DIRECTIONAL CONTROL VALVE OPERATION
1. WITH MANUAL DIRECTIONAL CONTROL VALVE IN CENTERED POSITION, PUSH TO ENGAGE PRIMARY CLUTCH.
2. WITH MANUAL DIRECTIONAL CONTROL VALVE IN CENTERED POSITION, PULL TO ENGAGE SECONDARY CLUTCH.
- C. MANUAL DIRECTIONAL CONTROL VALVE MODE SWITCH
1. SWITCH IS NORMALLY CLOSED WHEN MANUAL DIRECTIONAL CONTROL VALVE IS IN THE CENTERED POSITION AND OPEN WHEN LEVER IS ACTUATED FROM CENTERED POSITION.
2. CURRENT = 20 AMP MAX.
3. FOR WIRING SCHEMATIC, REFER TO CONTROL MODULE DRAWING.

NOTES:

- REFERENCE S930 FOR TWIN DISC REQUIREMENTS FOR PRESSURE AND TEMPERATURE ALARM LEVELS.
- UNLESS OTHERWISE SPECIFIED FASTENER TORQUE VALUES PER S574 STANDARD
- ALL POINTS AVAILABLE FOR TESTING ARE CODED



EQUIPMENT SHOWN:

- MGX-516 PER 1023380
- SAE #1 SAE 355-VKE-4010 SERIES
- GP VALVE WITH EC050 CONTROL MODULE
- SAE 127-2/4, 38-4 HYDRAULIC PTO (1017820N)
- 101748B OUTPUT FLANGE

FIRST USE ASSEMBLY: FIRST USE MODEL: MGX-516 SIMILAR TO:	WEIGHT: N/A KG: 110	THIRD ANGLE PROJECTION	MATERIAL: HEAT TREAT:	DATE: 07/13/2016	REV: 1 CHANGE NO. 1 DATE
METRIC			UNLESS OTHERWISE SPECIFIED DIMENSIONS ARE IN INCHES FRACTIONS DECIMALS ALL ANGLES UNLESS NOTED GEOMETRIC TOLERANCING PER ASME Y14.5M-1994	SCALE: 1:4 DRAWN BY: L.T. CHECKED BY: D.V. APPROVED BY: D.V.	TWIN DISC RACINE, WI 53403 - USA 1026197E SHEET 1 OF 1 REV: 1
DESCRIPTION: INSTALLATION MARINE, MGX-516			1026197E		