

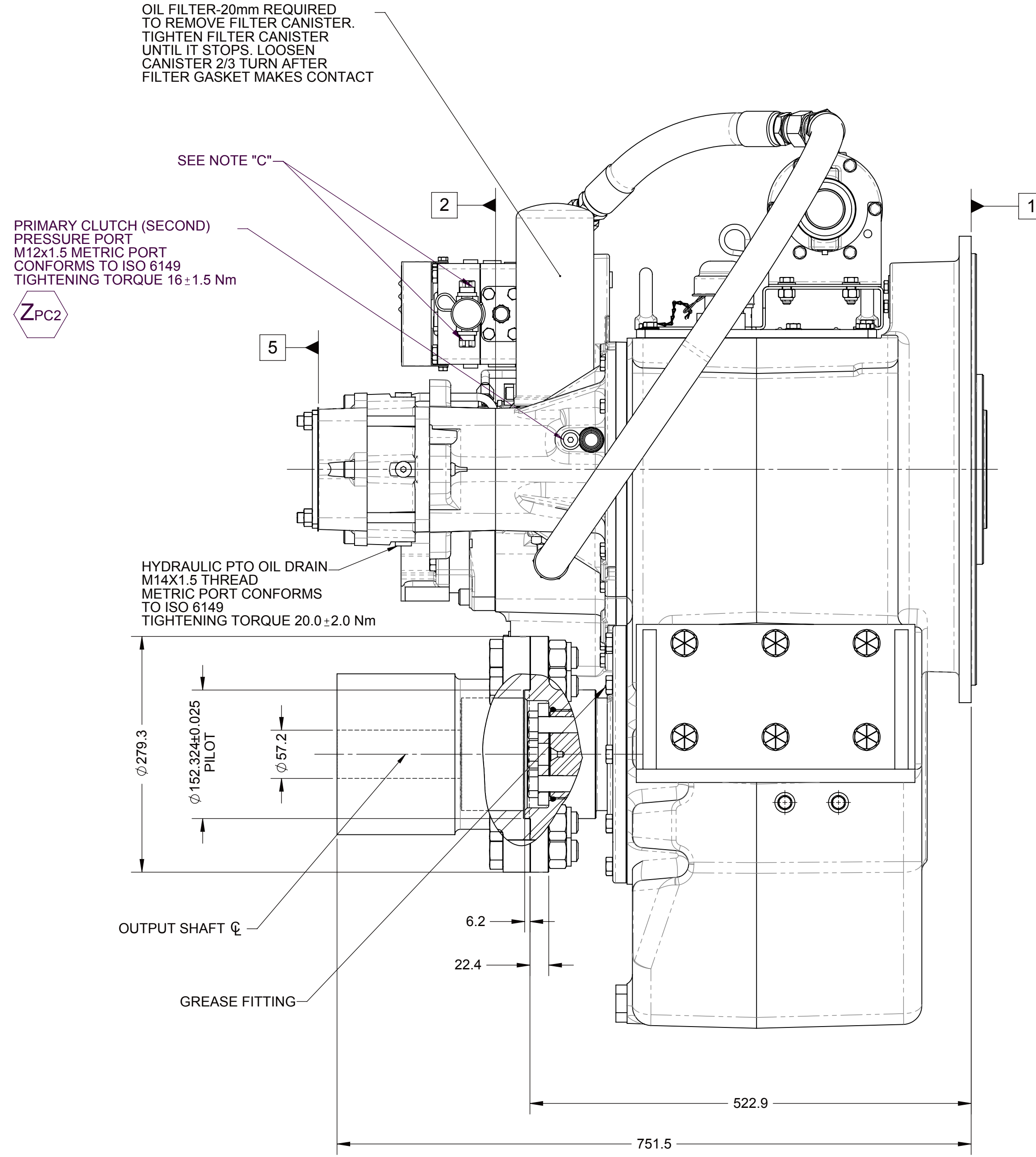
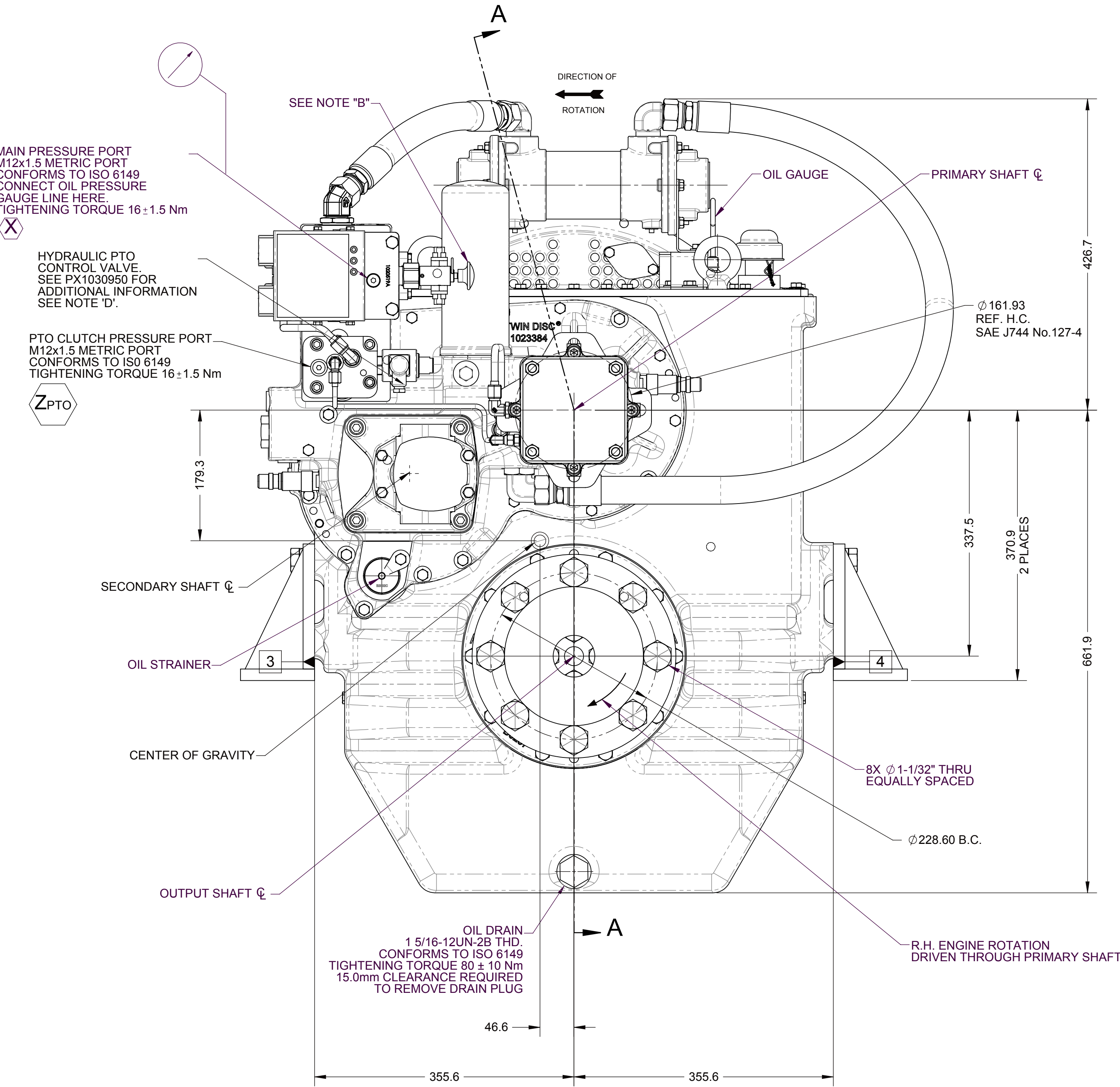
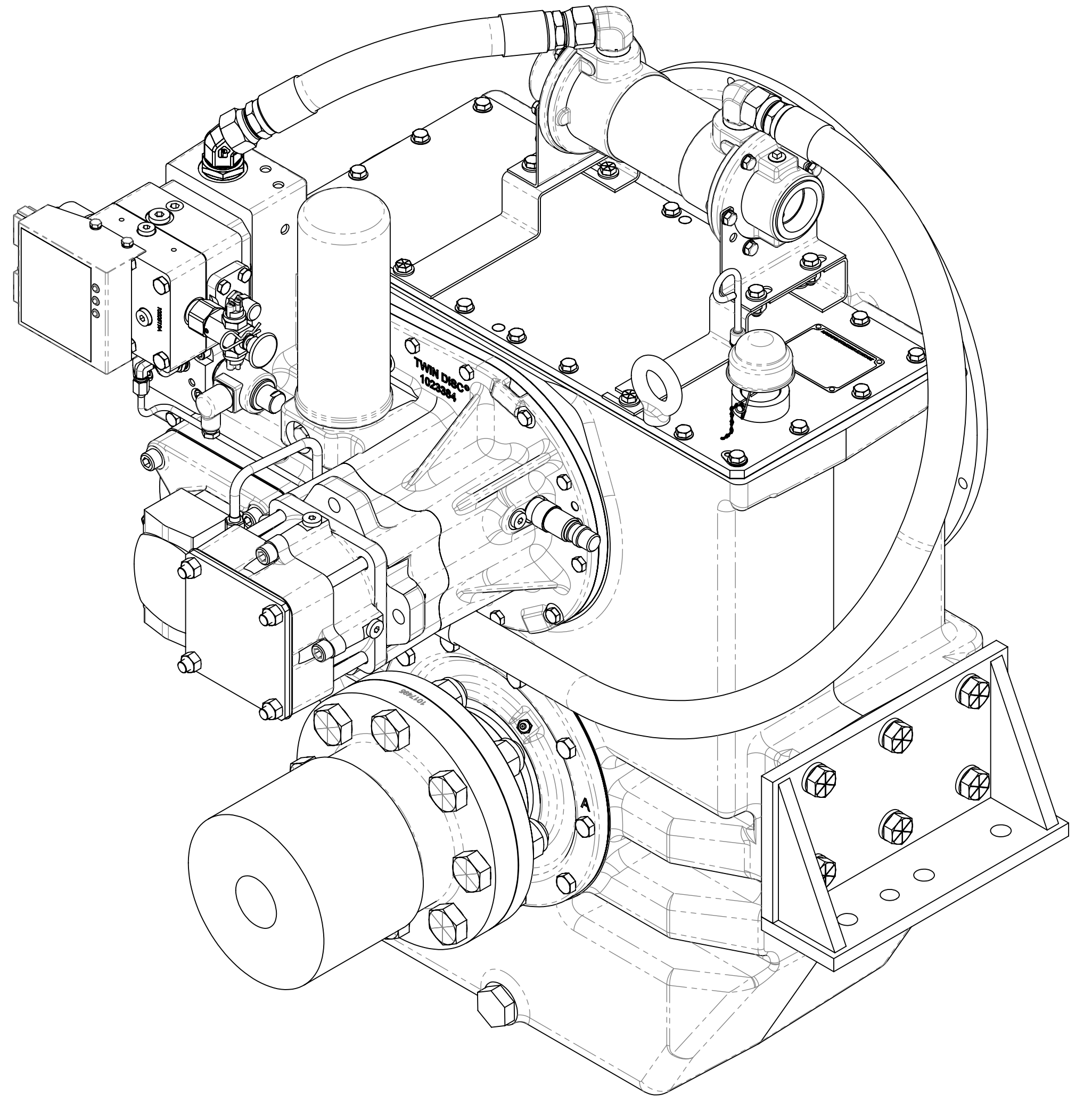
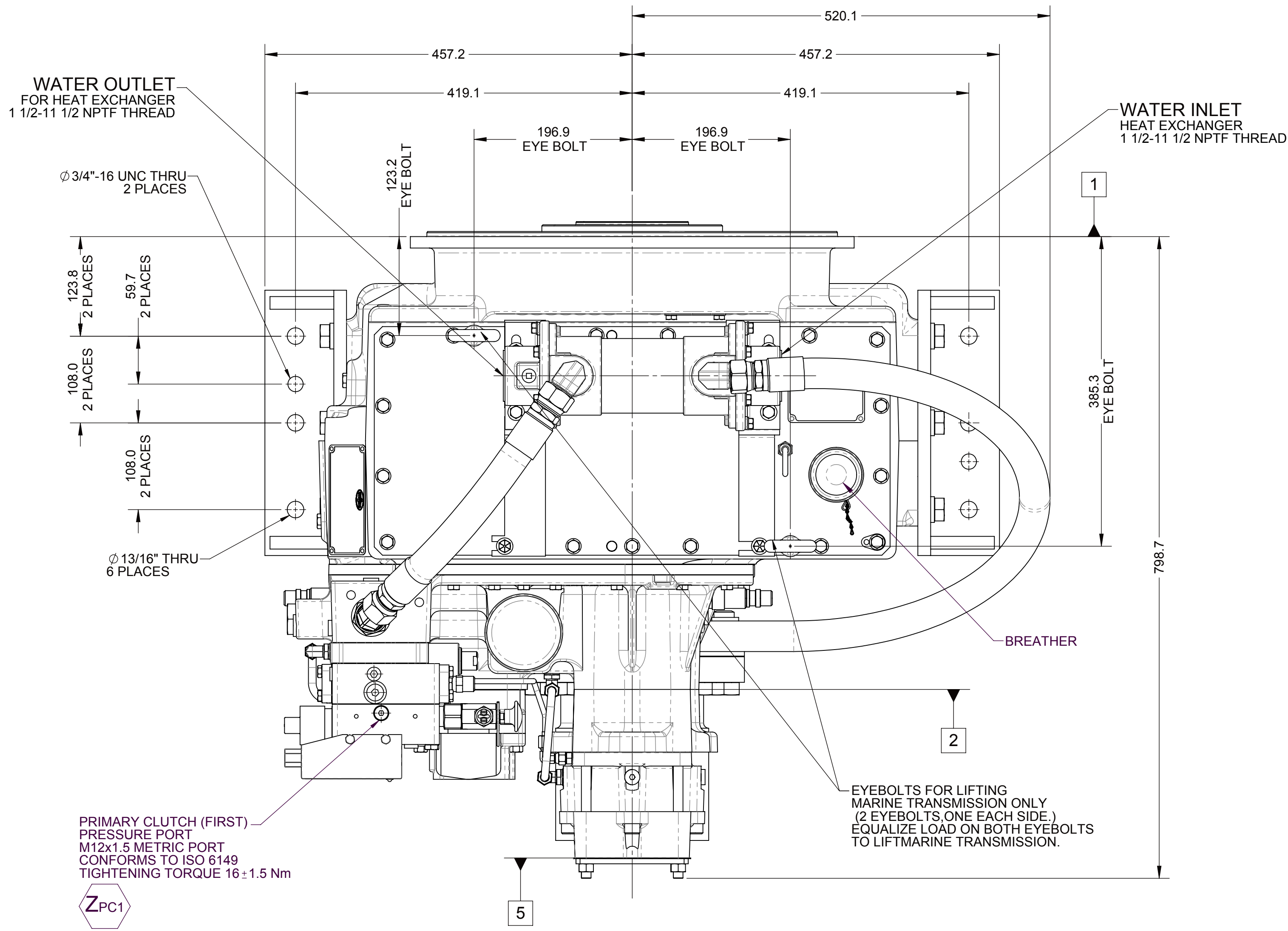
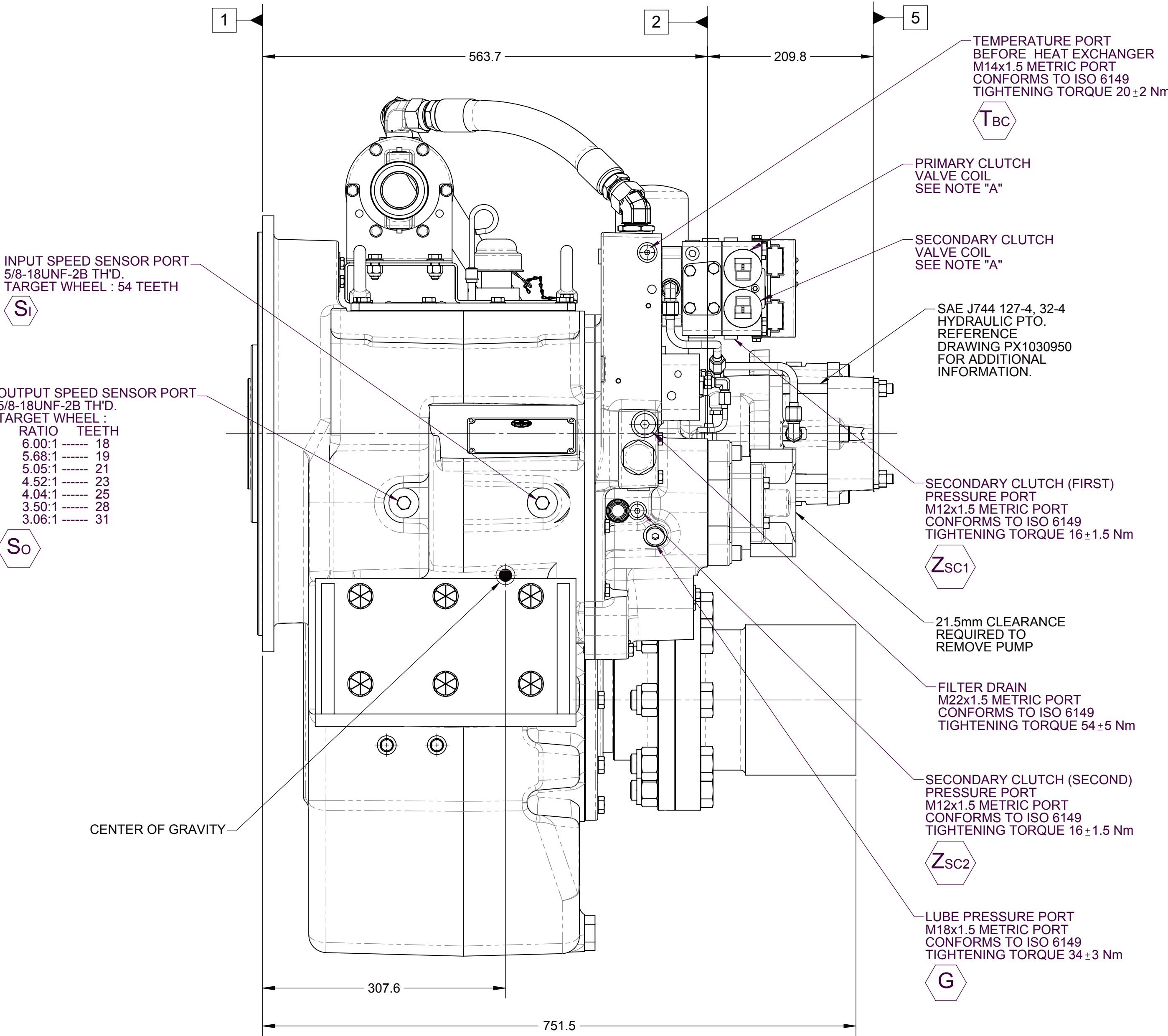
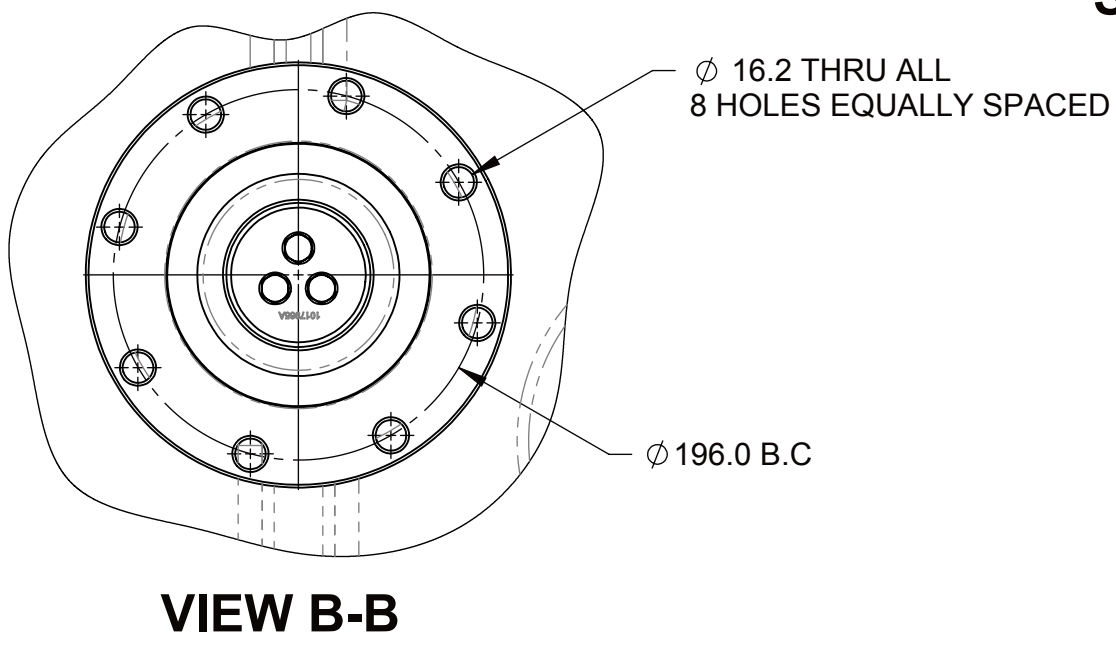
- 1ENGINE MOUNTING FACE
- 2PTO ADAPTER MOUNTING FACE
- 3LEFT MOUNTING BRACKET FACE
- 4RIGHT MOUNTING BRACKET FACE
- 5PUMP MOUNTING FACE

NOTES:

- A. PROPORTIONAL CONTROL VALVE OPERATION
1. WARNING DO NOT CONNECT VALVE COIL DIRECTLY TO BATTERY/POWER SUPPLY VOLTAGE.
2. OPERATION TO BE PERFORMED WITH ONLY TWIN DISC CONTROL SYSTEMS OR MODULES.
- B. MANUAL DIRECTIONAL CONTROL VALVE OPERATION
1. WITH MANUAL DIRECTIONAL CONTROL VALVE IN CENTERED POSITION, PUSH TO ENGAGE PRIMARY CLUTCH.
2. WITH MANUAL DIRECTIONAL CONTROL VALVE IN CENTERED POSITION, PULL TO ENGAGE SECONDARY CLUTCH.
- C. MANUAL DIRECTIONAL CONTROL VALVE MODE SWITCH
1. SWITCH IS NORMALLY CLOSED WHEN MANUAL DIRECTIONAL CONTROL VALVE IS IN THE CENTERED POSITION AND OPEN WHEN LEVER IS ACTUATED FROM CENTERED POSITION.
2. CURRENT = 20 AMP MAX.
3. FOR WIRING SCHEMATIC, REFER TO CONTROL MODULE DRAWING.
- D. PTO VALVE MANUAL OVERRIDE OPERATION
1. THE MANUAL OVERRIDE BUTTON MUST BE IN THE NEUTRAL POSITION TO OPERATE SOLENOID ELECTRICALLY.
2. TO ENGAGE HYDRAULIC PTO CLUTCH USING THE MANUAL OVERRIDE:
a. REMOVE PROTECTIVE CAP FROM THE HYDRAULIC PTO SOLENOID.
b. PUSH BUTTON DOWN.
c. CONTINUE TO PUSH BUTTON AND ROTATE CLOCKWISE 180°.
d. RELEASE BUTTON.
3. TO RETURN HYDRAULIC PTO MANUAL OVERRIDE TO THE NEUTRAL POSITION:
a. PUSH BUTTON DOWN.
b. CONTINUE TO PUSH BUTTON AND ROTATE COUNTERCLOCKWISE 180°.
c. RELEASE BUTTON.
d. INSTALL PROTECTIVE CAP OVER THE MANUAL OVERRIDE BUTTON

NOTES:

- REFERENCE S930 FOR TWIN DISC REQUIREMENTS FOR PRESSURE AND TEMPERATURE ALARM LEVELS.
- ALL POINTS AVAILABLE FOR TESTING ARE CODED



EQUIPMENT SHOWN:

- MGX-516 PTO 1023390
- SAE #1 / FREESTANDING GWB 587.50 INPUT FLANGE
- GP VALVE WITH EC050 PROFILE MODULE
- M165SD HEAT EXCHANGER GROUP
- SAE 127-4, 32-4 HYDRAULIC PTO
- 1017494 OUTPUT COMPANION FLANGE
- 1016428B MOUNTING BRACKET

| | | | | | |
|--|-----------------------------------|------------------------|---|---|-------------|
| FIRST USE ASSEMBLY: FIRST USE MODEL: MGX-516 SIMILAR TO: | WEIGHT: 1356.5 lb HGT: 14.2 in | THIRD ANGLE PROJECTION | DATE: 07/12/2016 SCALE: 1:4 DRAWN BY: L.T. CHECKED BY: J.M.F. APPROVED BY: J.M.F. | DESCRIPTION: INSTALLATION MARINE, MGX-516 | REV: 1 OF 1 |
| METRIC | | | TWIN DISC, INCORPORATED | | |
| NOTES: THIS PRINT CONTAINS PROPRIETARY INFORMATION AND IS NOT TO BE USED IN ANY MANNER WITHOUT THE WRITTEN PERMISSION OF TWIN DISC, INC. OR ITS SUBSIDIARIES. ALL ANGLES AND TOLERANCES ARE GEOMETRIC TOLERANCES PER ASME Y14.5M-1994. | | | TWIN DISC, INCORPORATED | | |