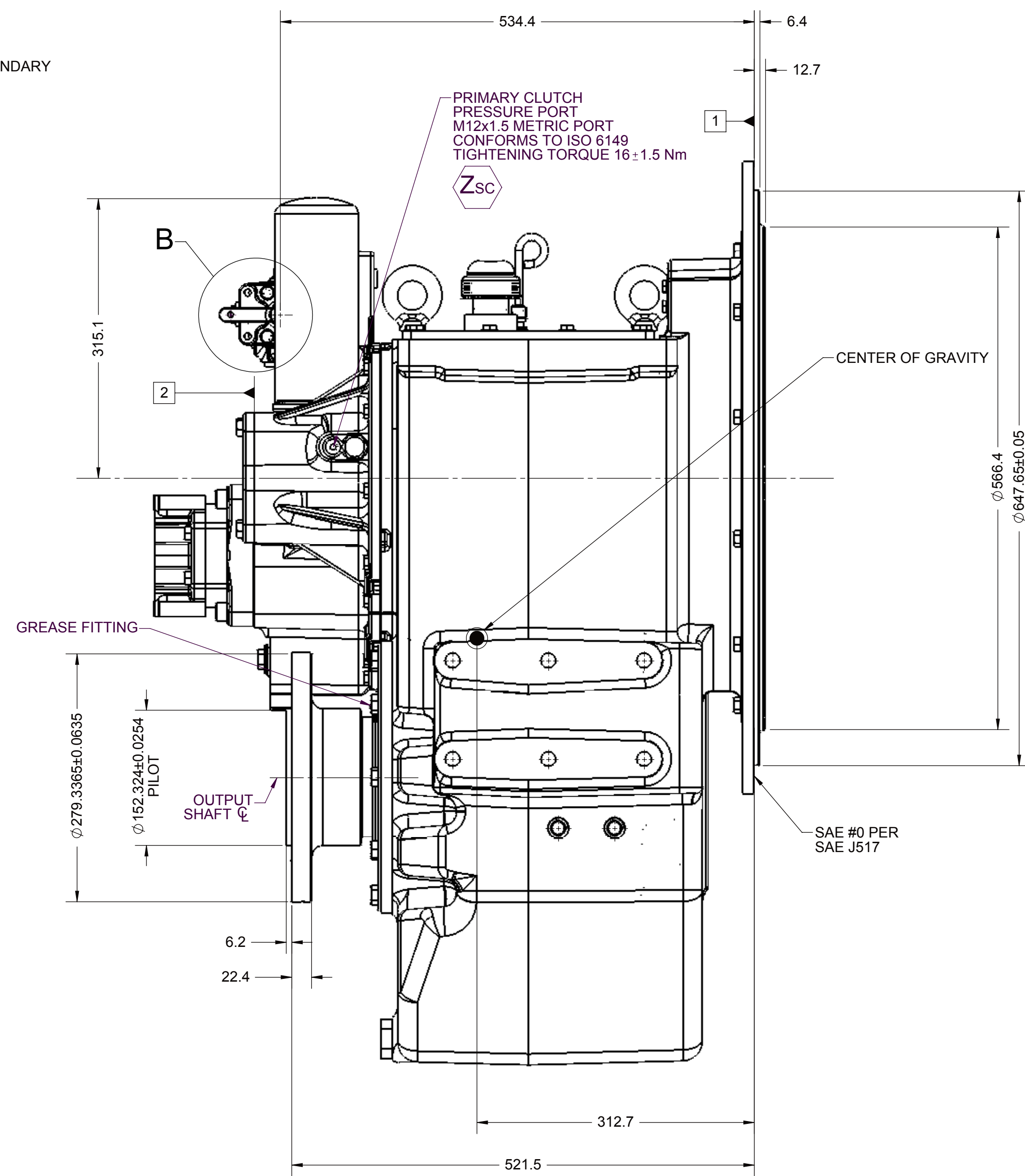
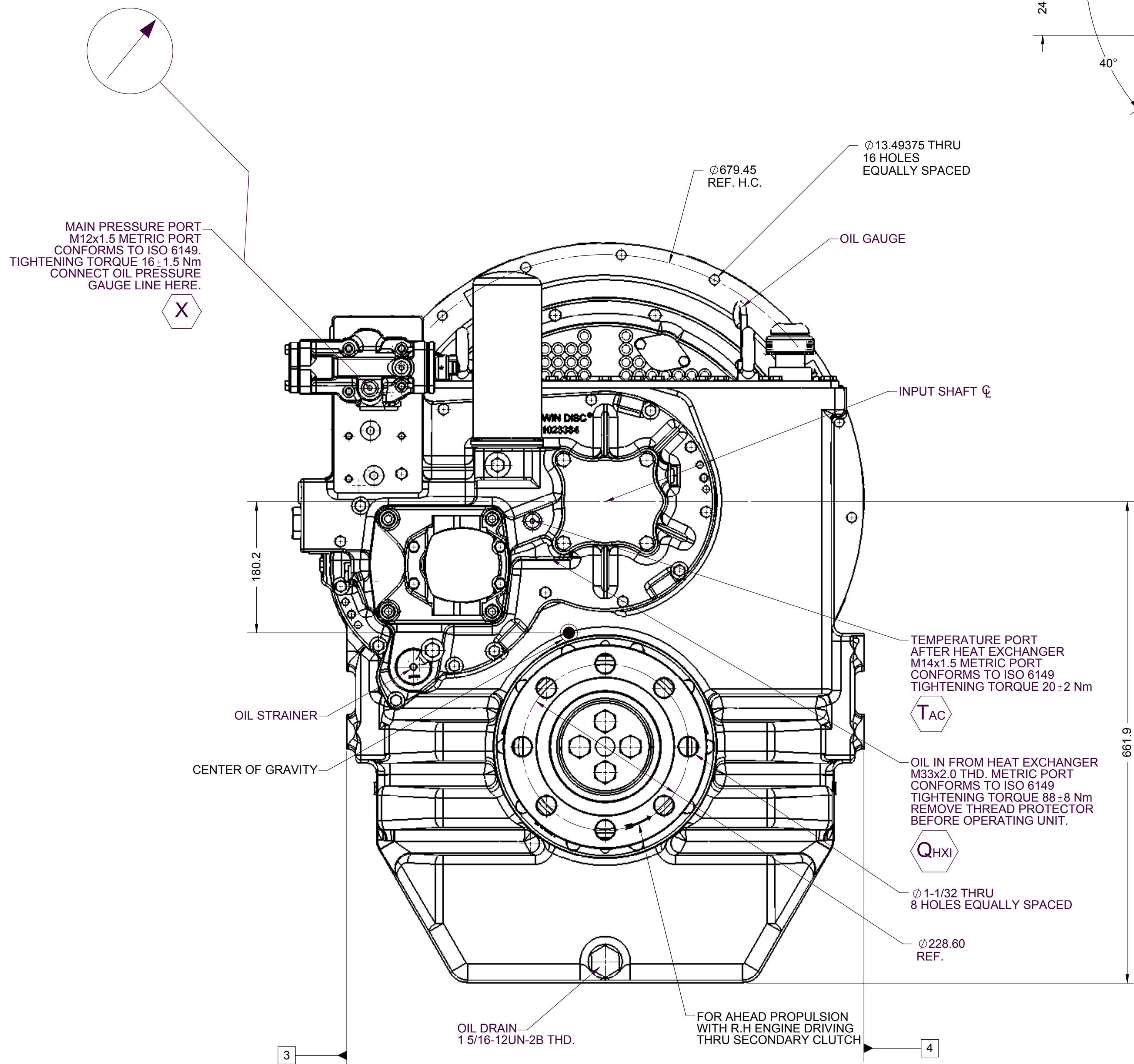
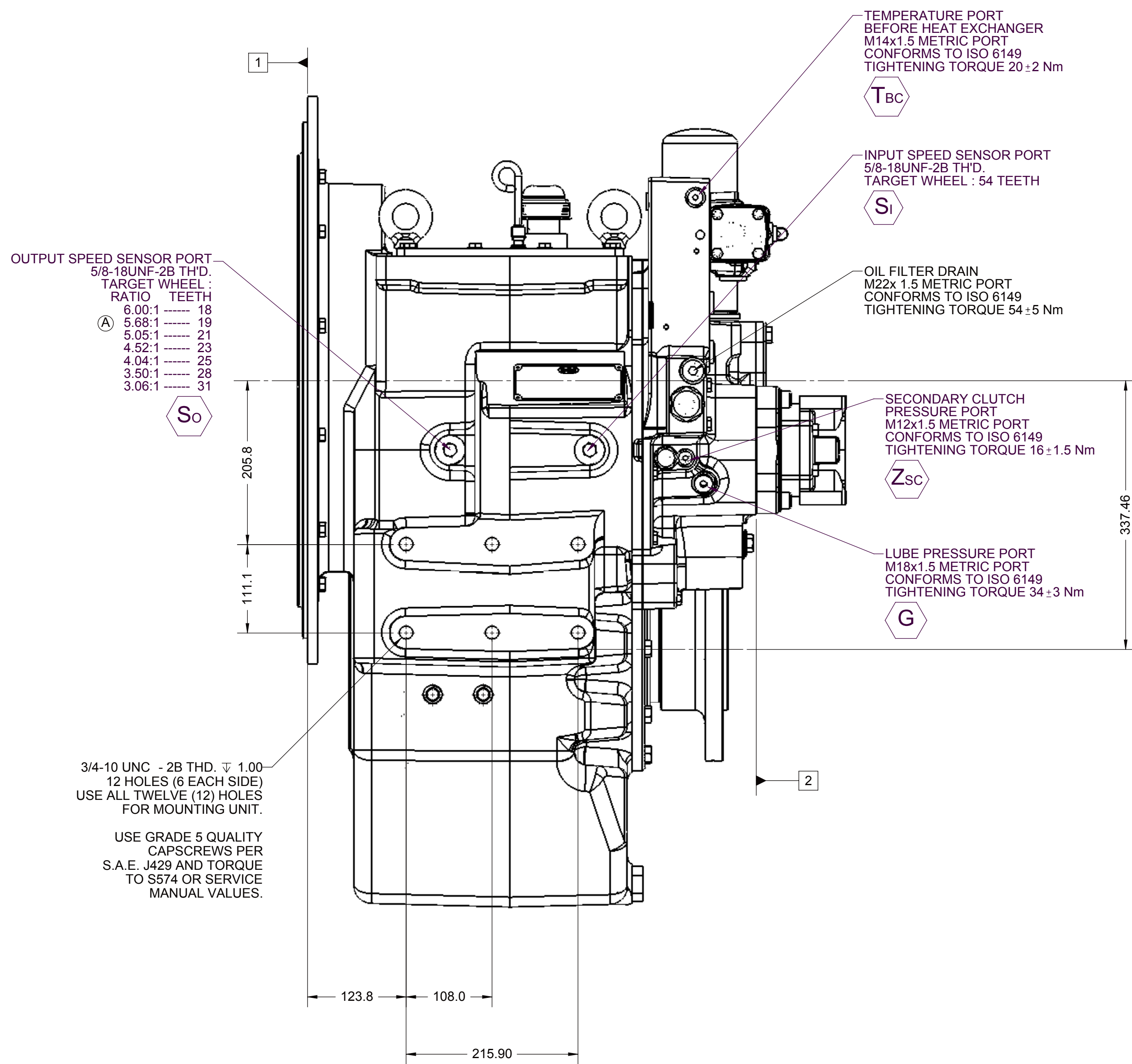
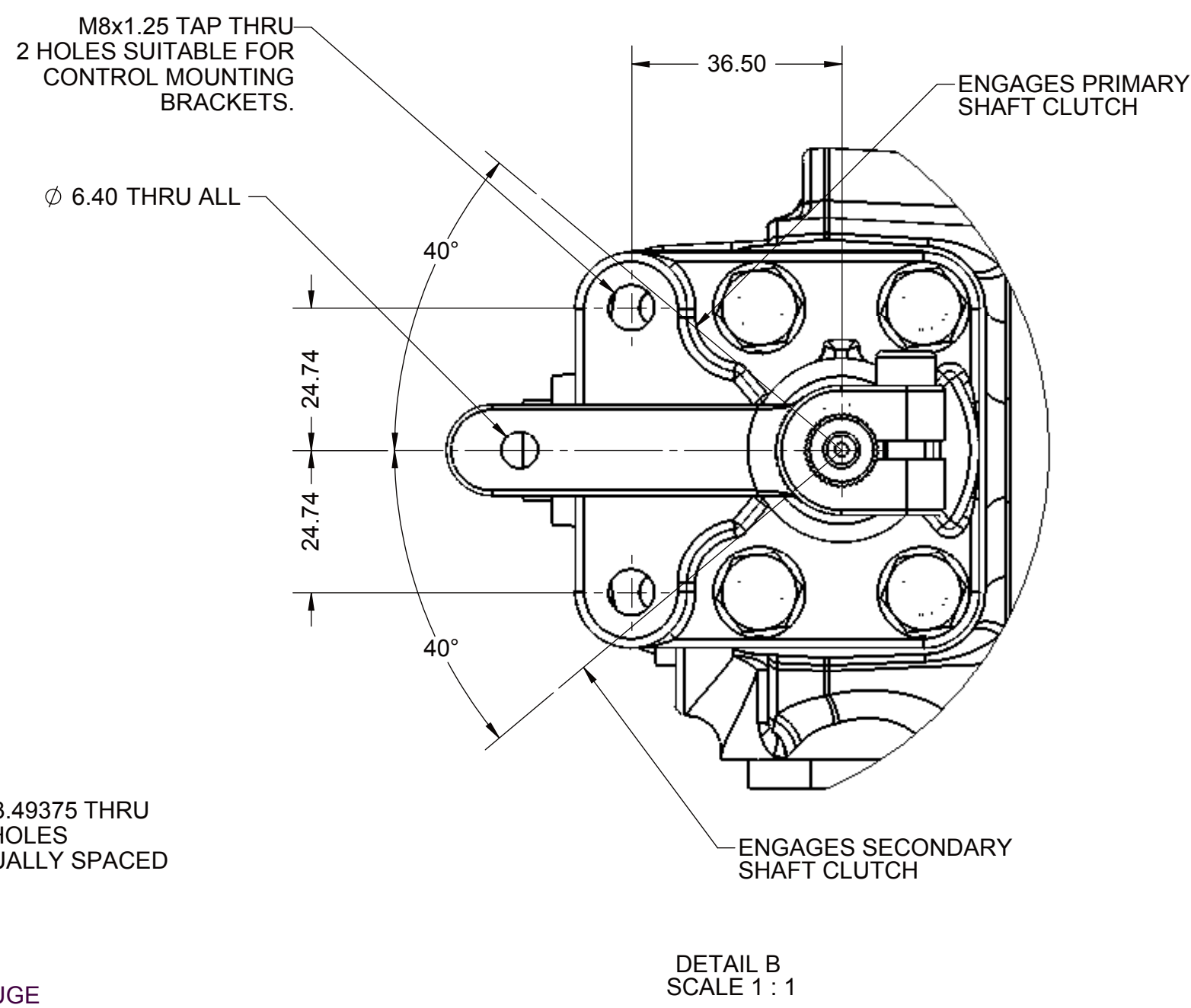
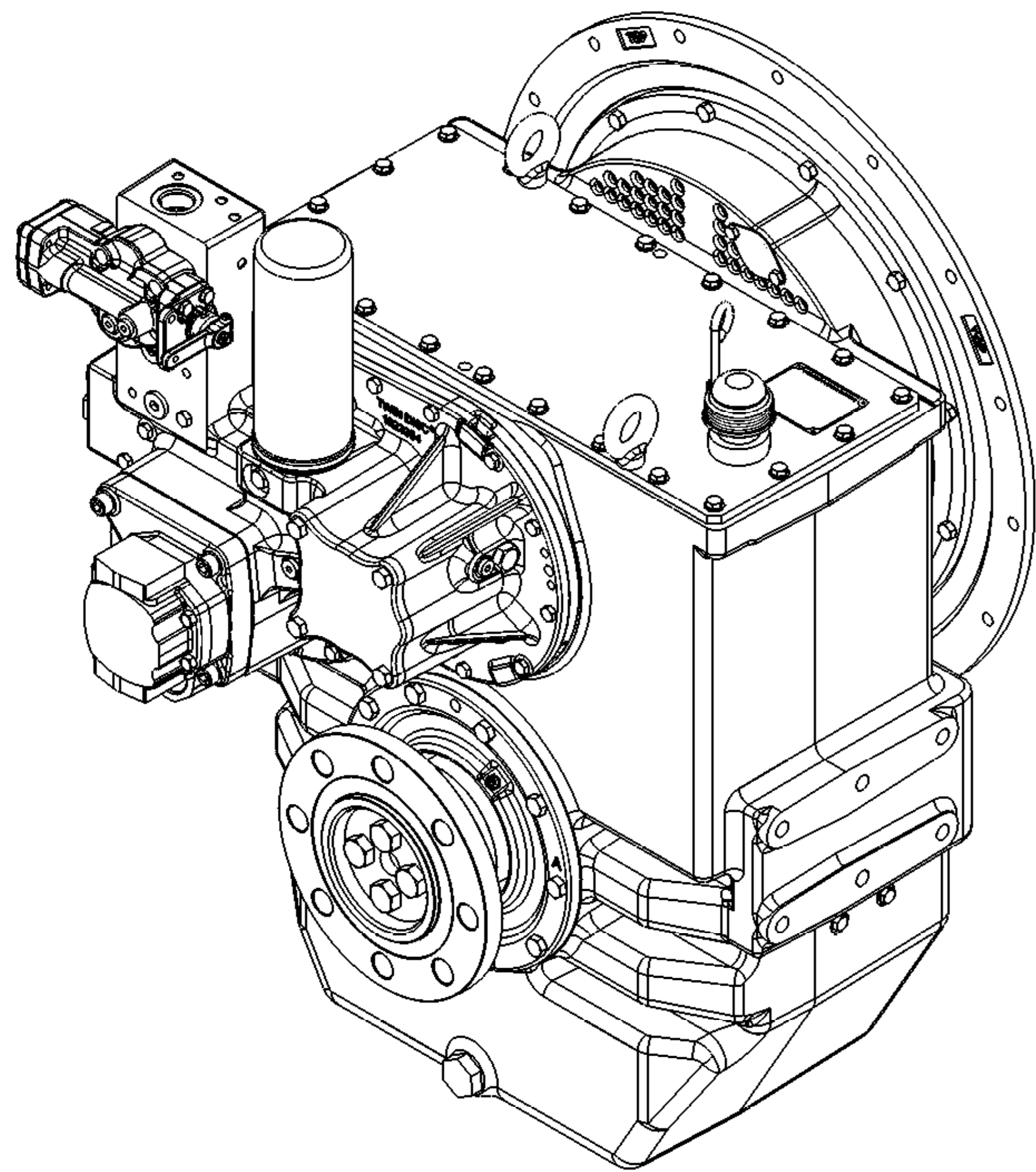
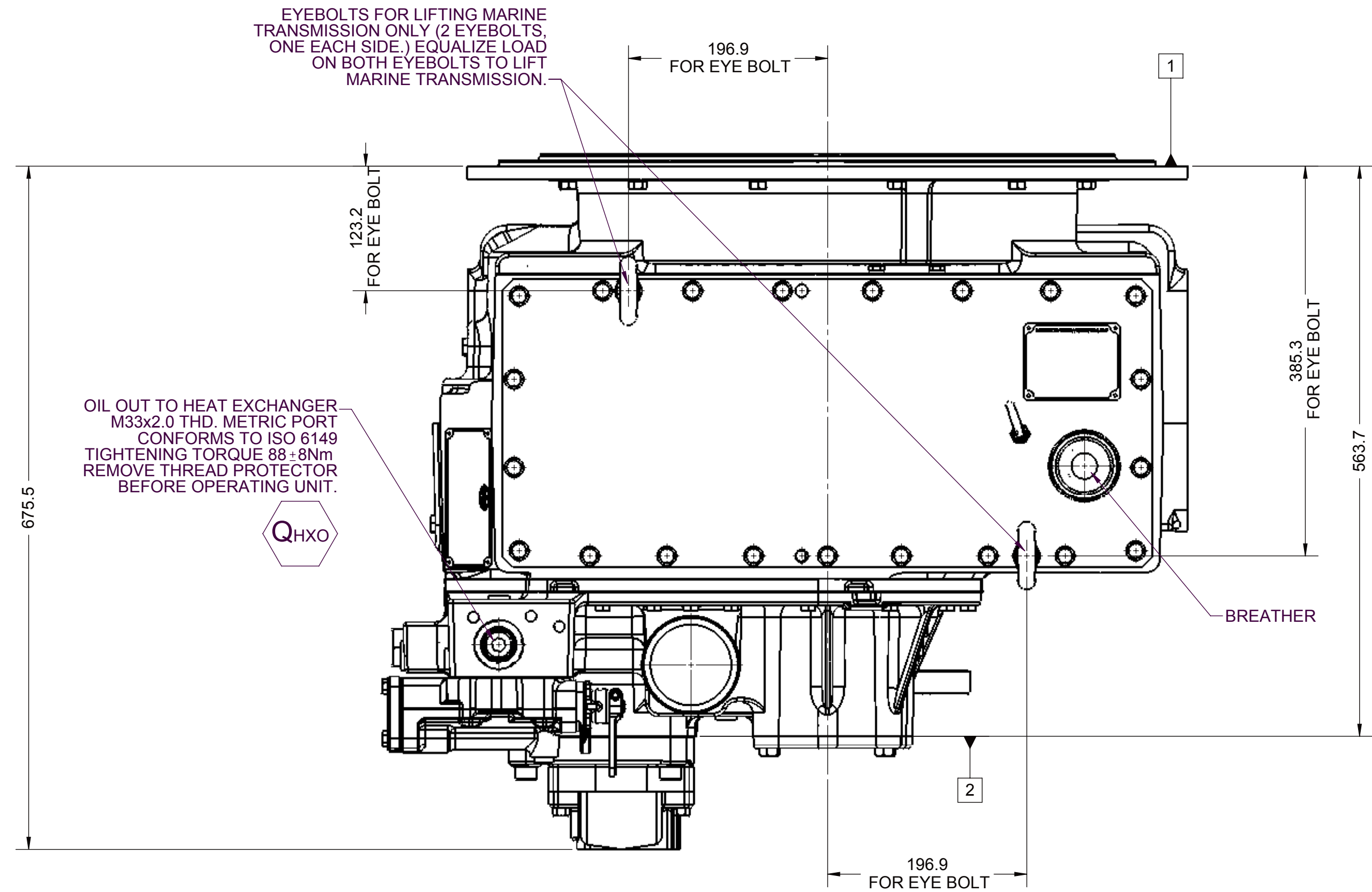


- 1ENGINE MOUNTING FACE
- 2PTO ADAPTER MOUNTING FACE
- 3LEFT MOUNTING BRACKET FACE
- 4RIGHT MOUNTING BRACKET FACE



EQUIPMENT SHOWN:  
- MG-516 PER 1023381 ASSEMBLY  
- 8470B SAE #0 TO SAE #1 ADAPTER HOUSING  
- 1020412 MECHANICAL VALVE  
- 1017488 OUTPUT FLANGE.

NOTE: JUMPER BRACKET OR SIX (6) POINT MOUNT MUST BE UTILIZED WHEN MOUNTING ENGINE/TRANSMISSION PACKAGE. USE OF FOUR (4) POINT MOUNT WITH OUT JUMPER BRACKET BETWEEN THE TRANSMISSION AND REAR ENGINE MOUNTS IS NOT PERMITTED.

FIRST USE ASSEMBLY 1023381		WEIGHT:	kg	lb	THIRD ANGLE PROJECTION	MATERIAL:	DATE:
FIRST USE MODEL MG-516							07/31/2012
SIMILAR TO:							SCALE:
							1:4
							DRAWN BY:
							ALC
							CHECKED BY:
							ALC
							APPROVED BY:
							ALC
							DATE:
							07/31/2012
							REVISION:
							1 OF 1

A

ECNWF-23738

08/27/2013

TWIN(DISC)

1026198C

DESCRIPTION:

INSTALLATION MG-516