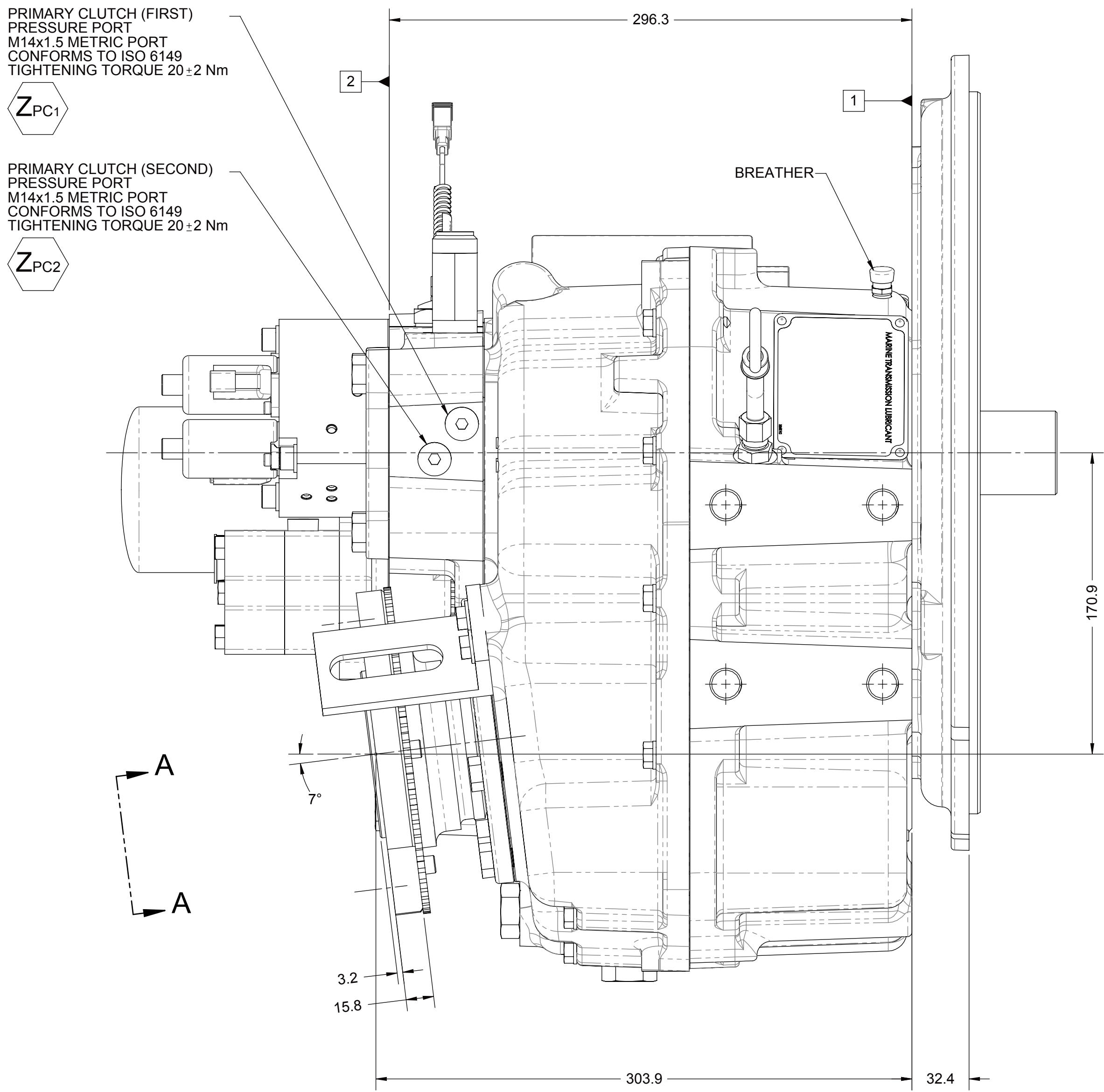
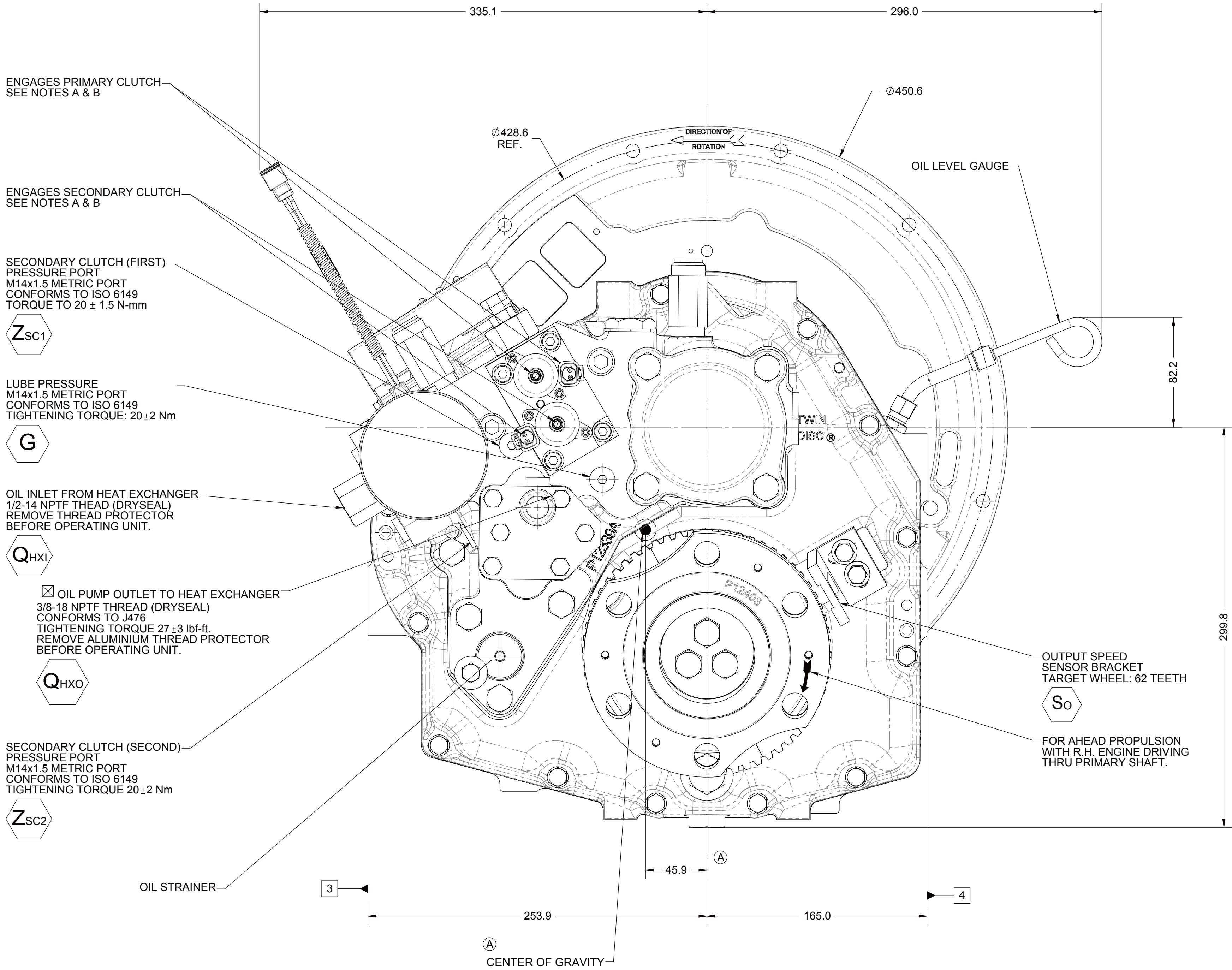
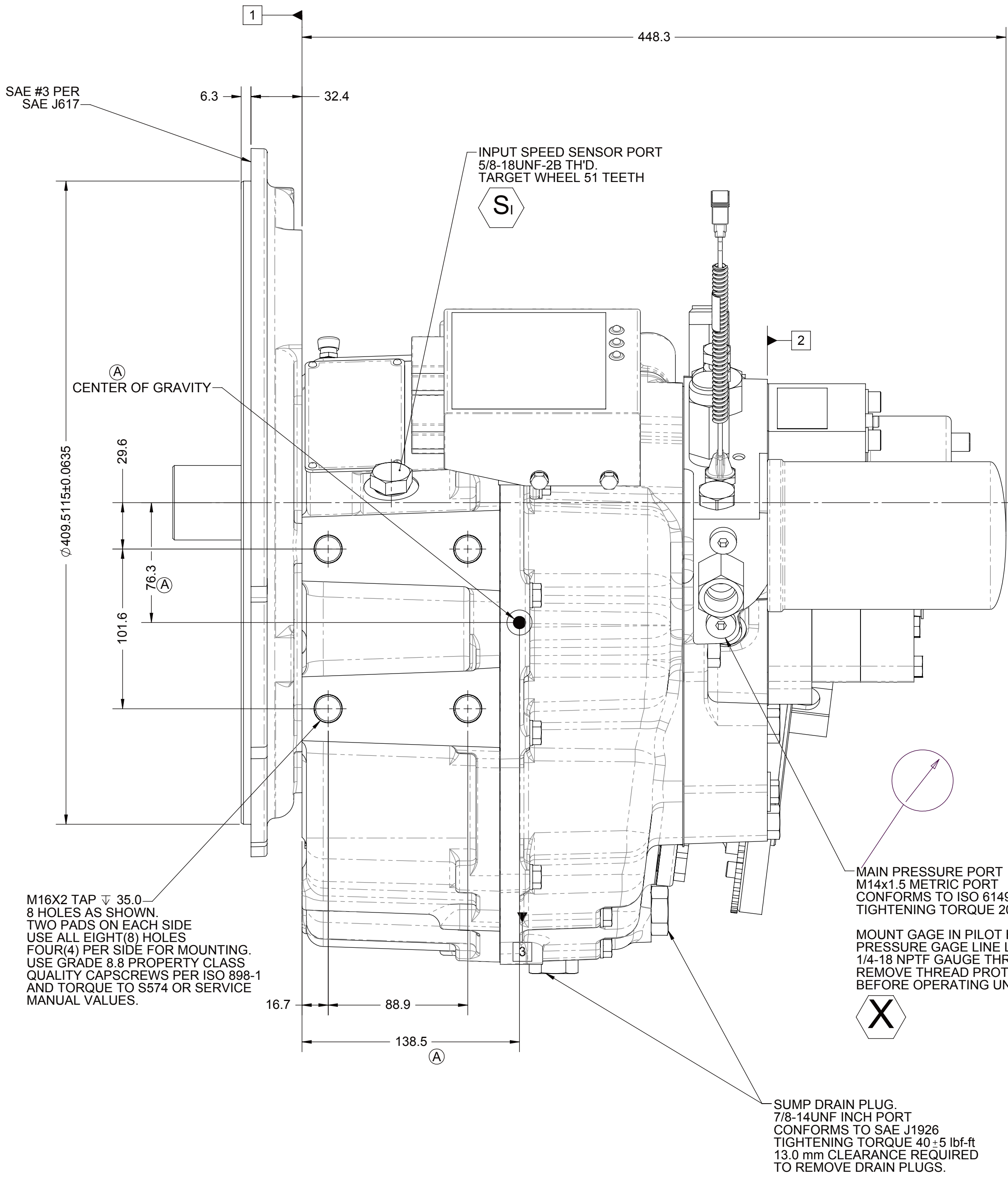
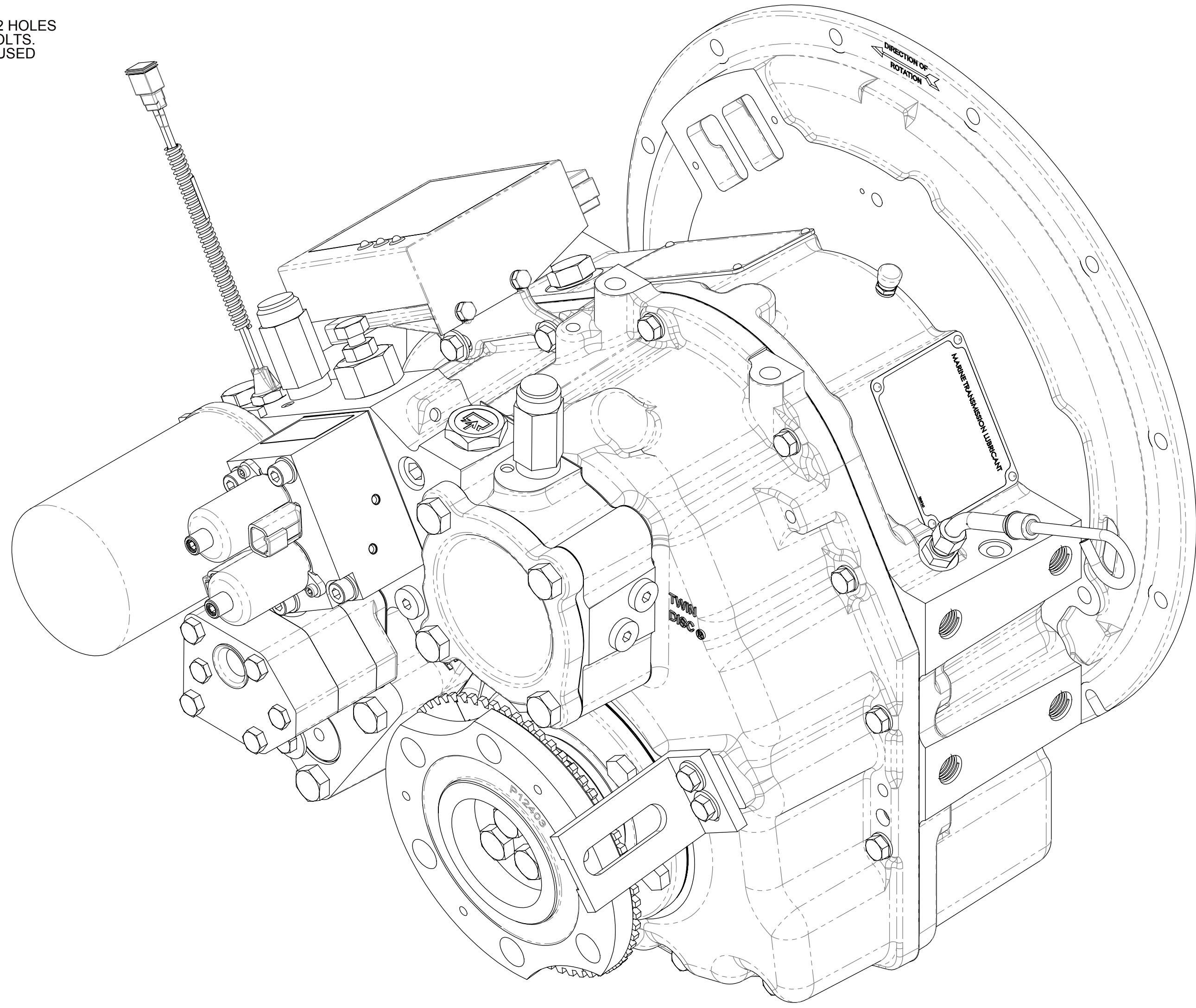
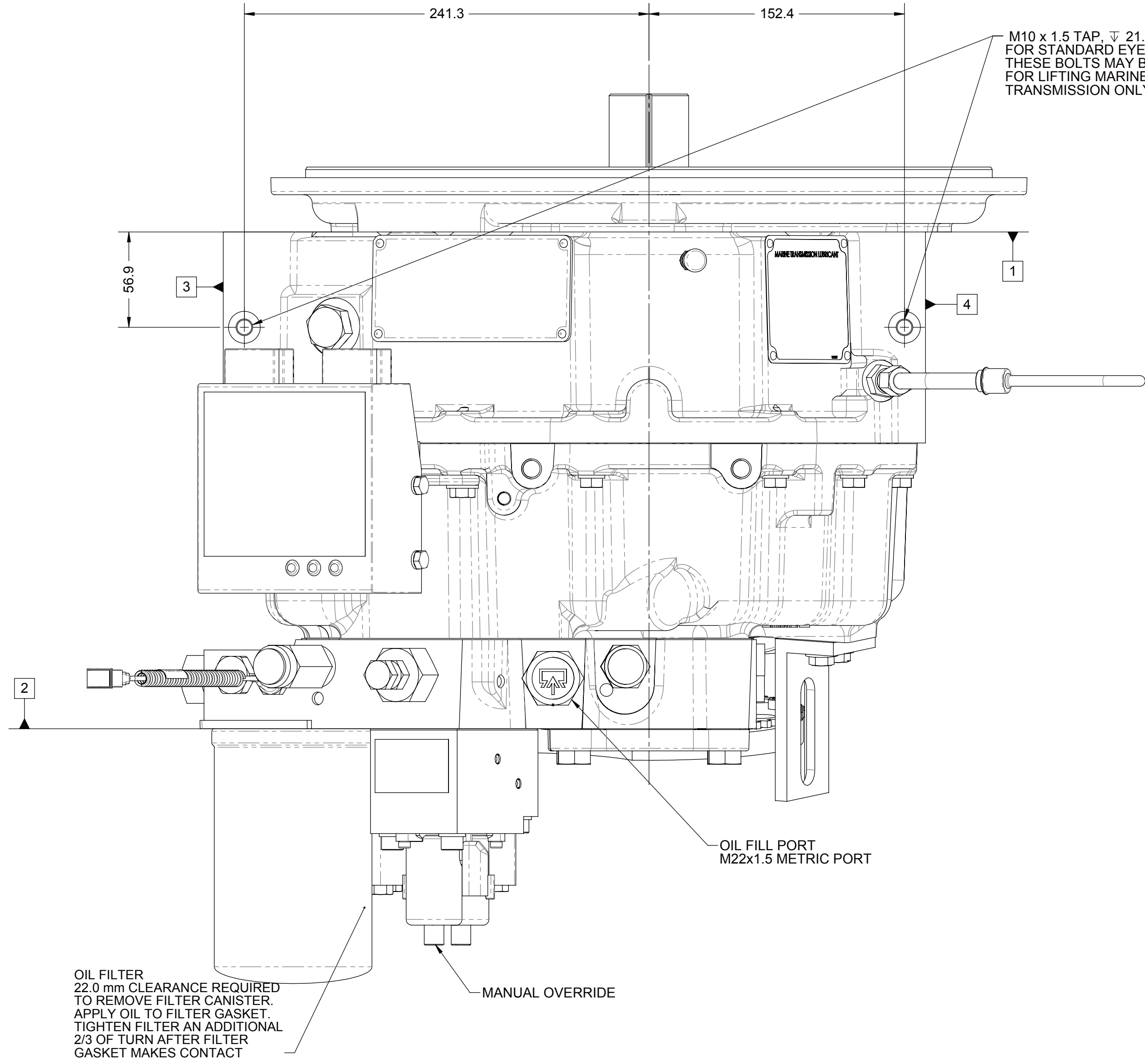
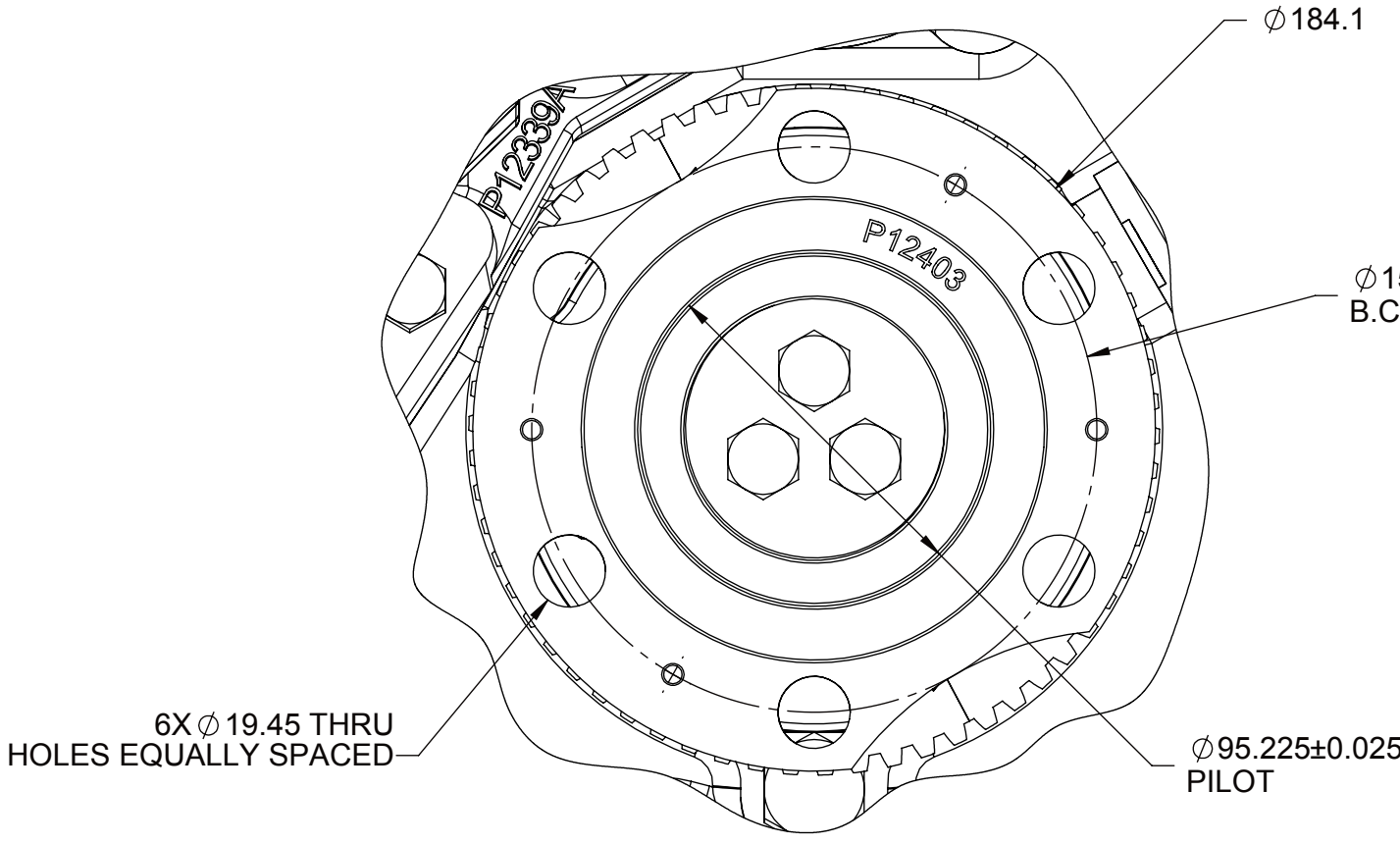


- 1
- INPUT GROUP REFERENCE PLANE
- 2
- PTO ADAPTER MOUNTING FACE
- 3
- LEFT MOUNTING BRACKET FACE
- 4
- RIGHT MOUNTING BRACKET FACE

NOTES :

- A. PROPORTIONAL CONTROL VALVE OPERATION
1. WARNING DO NOT CONNECT VALVE COIL DIRECTLY TO BATTERY / POWER SUPPLY VOLATAGE.
2. OPERATION TO BE PERFORMED WITH ONLY TWIN DISC CONTROL SYSTEMS OR MODULES.
- B. MANUAL OVERRIDE VALVE OPERATION
1. THE MANUAL OVERRIDE FEATURE FOR THE PRIMARY AND SECONDARY SOLENOIDS MUST NEVER BE ENGAGED SIMULTANEOUSLY.
2. ROTATE THE MANUAL OVERRIDE SCREW COUNTER-CLOCKWISE UNTIL THE SCREWS STOPS FOR THE NEUTRAL POSITION
3. THE MANUAL OVERRIDE SCREWS FOR BOTH THE PRIMARY AND SECONDARY SOLENOID MUST BE IN THE NEUTRAL POSITION TO OPERATE THE VALVE UTILIZING THE TWIN DISC CONTROL SYSTEM.
4. TO ENGAGE PRIMARY CLUTCH TURN THE PRIMARY OVERRIDE SCREW IN A CLOCKWISE DIRECTION UNTIL THE SCREW STOPS TURNING.
5. TO ENGAGE SECONDARY CLUTCH TURN THE SECONDARY OVERRIDE SCREW IN A CLOCKWISE DIRECTION UNTIL THE SCREW STOPS TURNING.
- C. REFERENCE S930 FOR TWIN DISC REQUIREMENTS FOR PRESSURE AND TEMPERATURE ALARM LEVELS.

☒ **OPTIONAL TEMPERATURE INDICATING SWITCH:**
CUSTOMER TO INSTALL IN A PIPE TEE IN THE HYDRAULIC LINE LEADING FROM THE MARINE TRANSMISSION PUMP TO THE HEAT EXCHANGER INLET. REFER TO HYDRAULIC DIAGRAM.



EQUIPMENT SHOWN:
- MGX-5065A PER PX12370 SERIES
- GP VALVE WITH EC050 CONTROL MODULE
- SAE #3 HOUSING ADAPTER

FIRST USE ASSEMBLY: FIRST USE MODEL: MGX-5065A SIMILAR TO: 1026215		WEIGHT: 106.25 lb 19.4	THIRD ANGLE PROJECTION	MATERIAL: HEAT TREAT:	DATE: 04/26/2013 SCALE: 1:2 DRAWN BY: MV CHECKED BY: DV APPROVED BY: ALC	DESCRIPTION: INSTALLATION MGX-5065A	REVISION: REV: 1 OF 1
TWIN DISC, INCORPORATED THIS PRINT CONTAINS PROPRIETARY INFORMATION AND IS NOT TO BE USED IN ANY MANNER WITHOUT THE WRITTEN PERMISSION OF TWIN DISC, INC. OR ITS SUBSIDIARIES. ALL DIMENSIONS ARE IN INCHES UNLESS OTHERWISE SPECIFIED. DIMENSIONS IN PARENTHESES ARE FOR INFORMATION ONLY. GEOMETRIC TOLERANCES PER ASME Y14.5M-1994.		TWIN DISC		RACINE, WI 53403 - USA		1026215A	