

- 1 INPUT GROUP MOUNTING FACE
2 PTO GROUP MOUNTING FACE
3 LEFT BRACKET MOUNTING FACE
4 RIGHT BRACKET MOUNTING FACE
5 LIVE PTO PUMP MOUNTING FACE

NOTES:

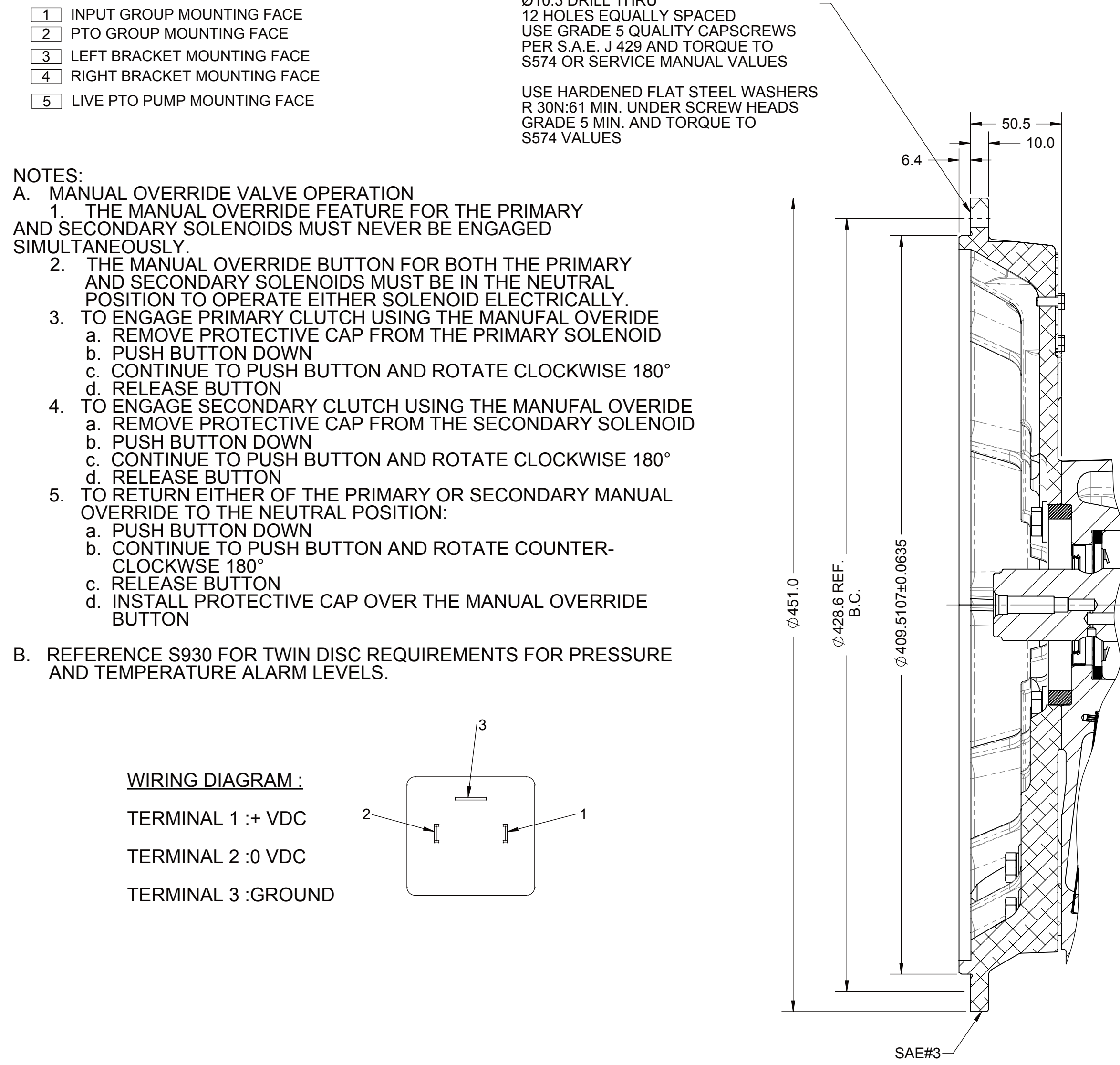
A. MANUAL OVERRIDE VALVE OPERATION

1. THE MANUAL OVERRIDE FEATURE FOR THE PRIMARY AND SECONDARY SOLENOIDS MUST NEVER BE ENGAGED SIMULTANEOUSLY.
2. THE MANUAL OVERRIDE BUTTON FOR BOTH THE PRIMARY AND SECONDARY SOLENOIDS MUST BE IN THE NEUTRAL POSITION TO OPERATE EITHER SOLENOID ELECTRICALLY TO ENGAGE PRIMARY CLUTCH USING THE MANUFAL OVERRIDE
3. TO ENGAGE PRIMARY CLUTCH USING THE MANUFAL OVERRIDE
 - a. REMOVE PROTECTIVE CAP FROM THE PRIMARY SOLENOID
 - b. PUSH BUTTON DOWN
 - c. CONTINUE TO PUSH BUTTON AND ROTATE CLOCKWISE 180°
 - d. RELEASE BUTTON
4. TO ENGAGE SECONDARY CLUTCH USING THE MANUFAL OVERRIDE
 - a. REMOVE PROTECTIVE CAP FROM THE SECONDARY SOLENOID
 - b. PUSH BUTTON DOWN
 - c. CONTINUE TO PUSH BUTTON AND ROTATE CLOCKWISE 180°
 - d. RELEASE BUTTON
5. TO RETURN EITHER OF THE PRIMARY OR SECONDARY MANUAL OVERRIDE TO THE NEUTRAL POSITION:
 - a. PUSH BUTTON DOWN
 - b. CONTINUE TO PUSH BUTTON AND ROTATE COUNTER-CLOCKWISE 180°
 - c. RELEASE BUTTON
 - d. INSTALL PROTECTIVE CAP OVER THE MANUAL OVERRIDE BUTTUN

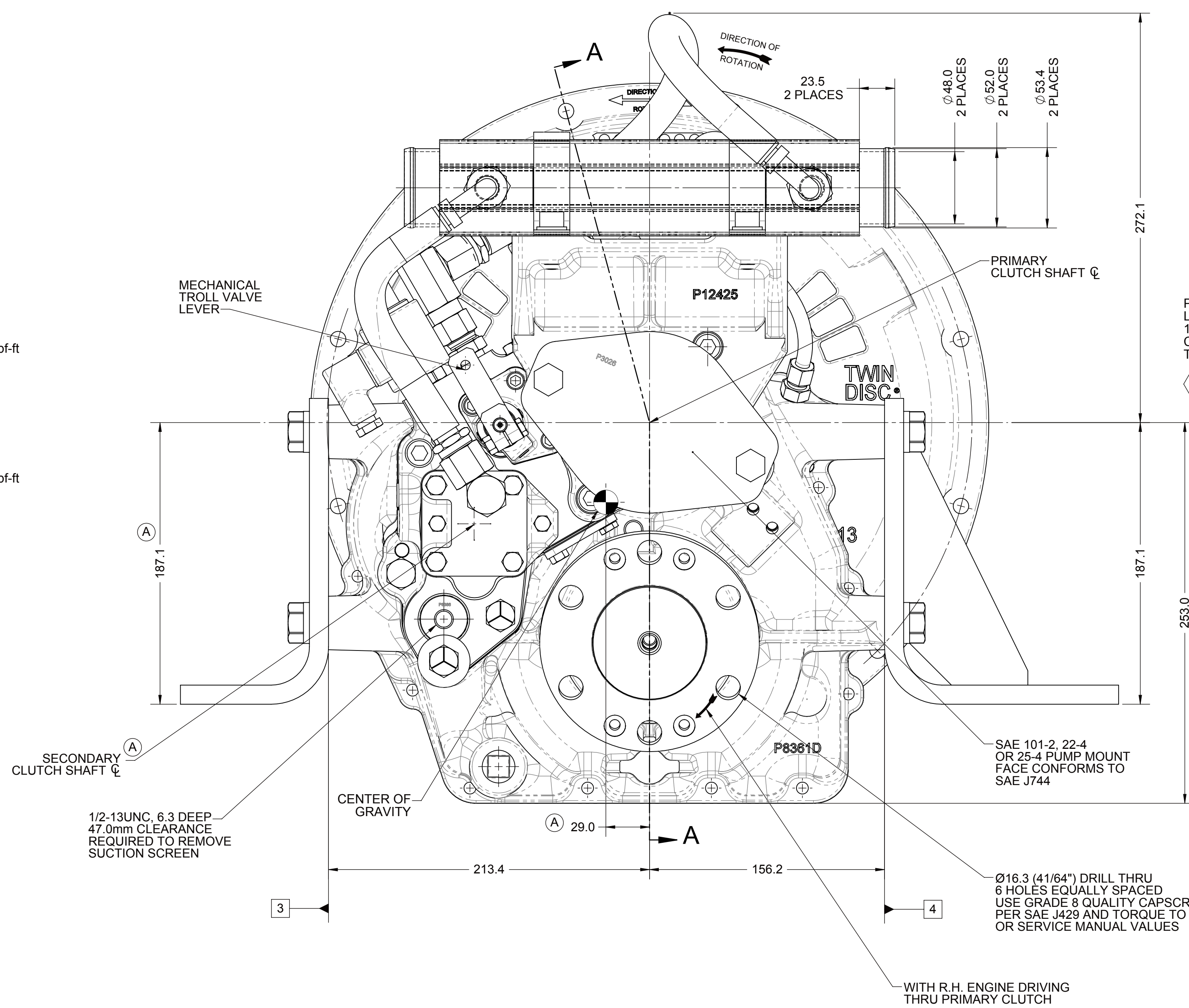
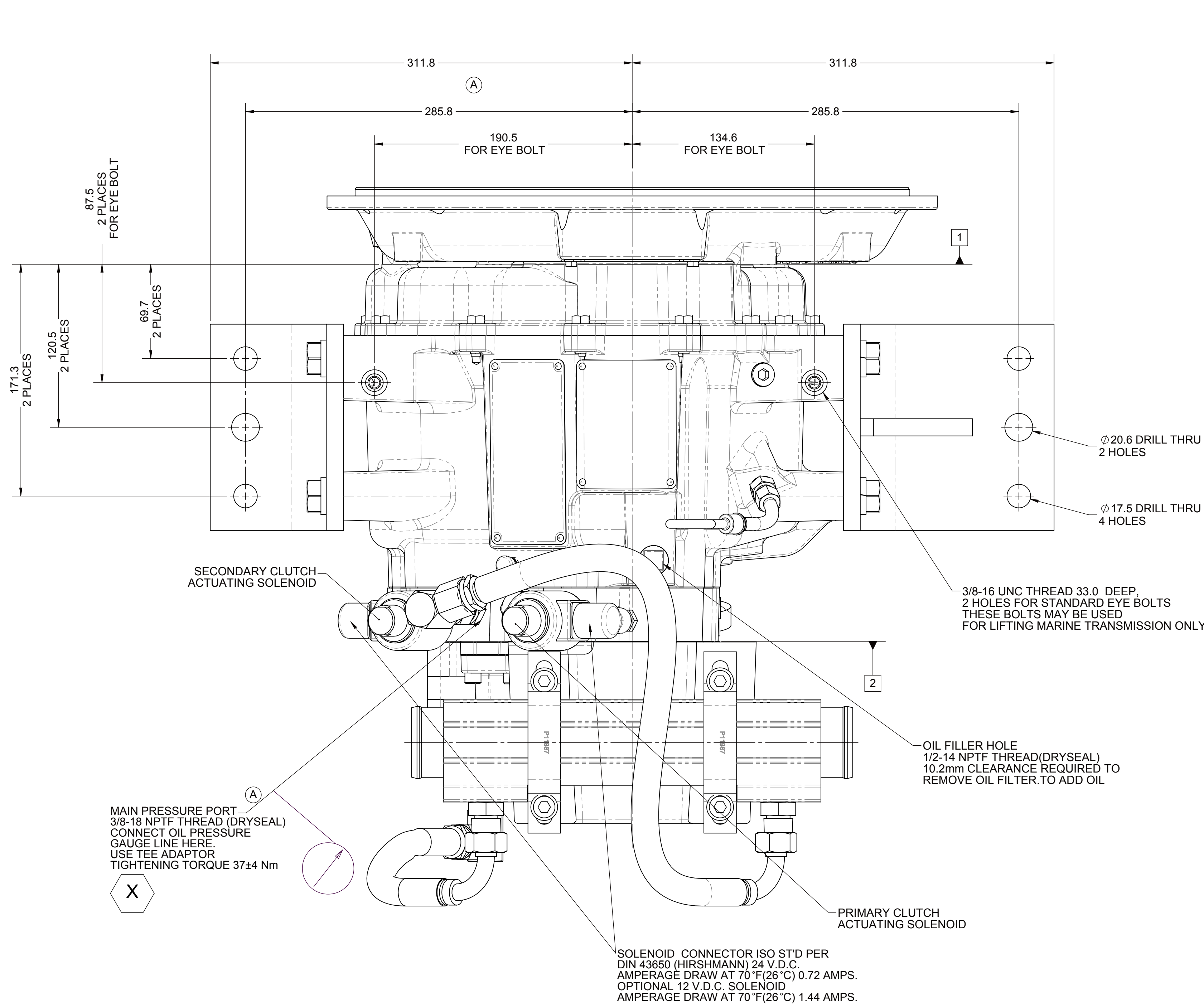
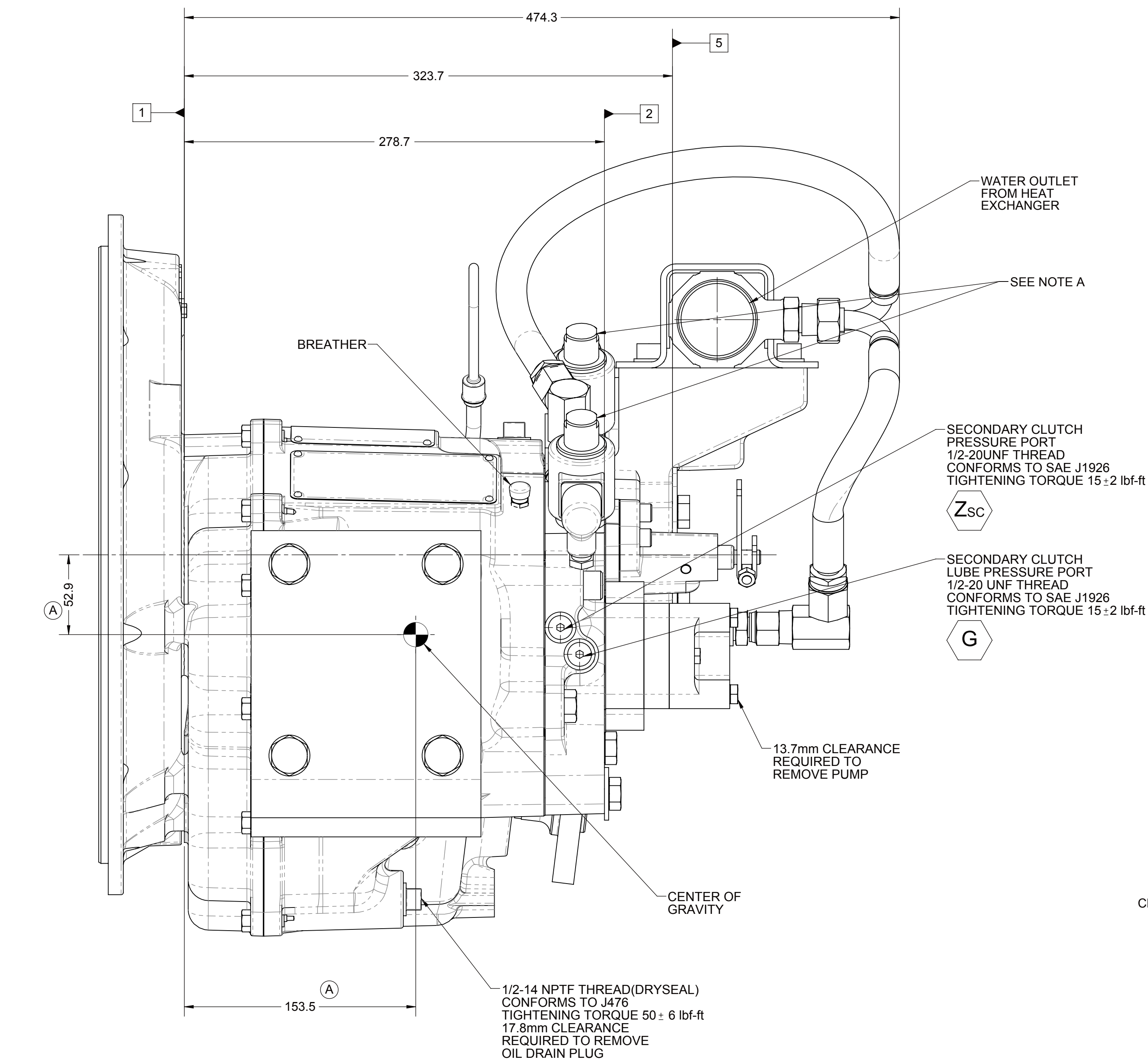
B. REFERENCE S930 FOR TWIN DISC REQUIREMENTS FOR PRESSURE AND TEMPERATURE ALARM LEVELS.

WIRING DIAGRAM:

TERMINAL 1 :+ VDC
TERMINAL 2 :0 VDC
TERMINAL 3 :GROUND

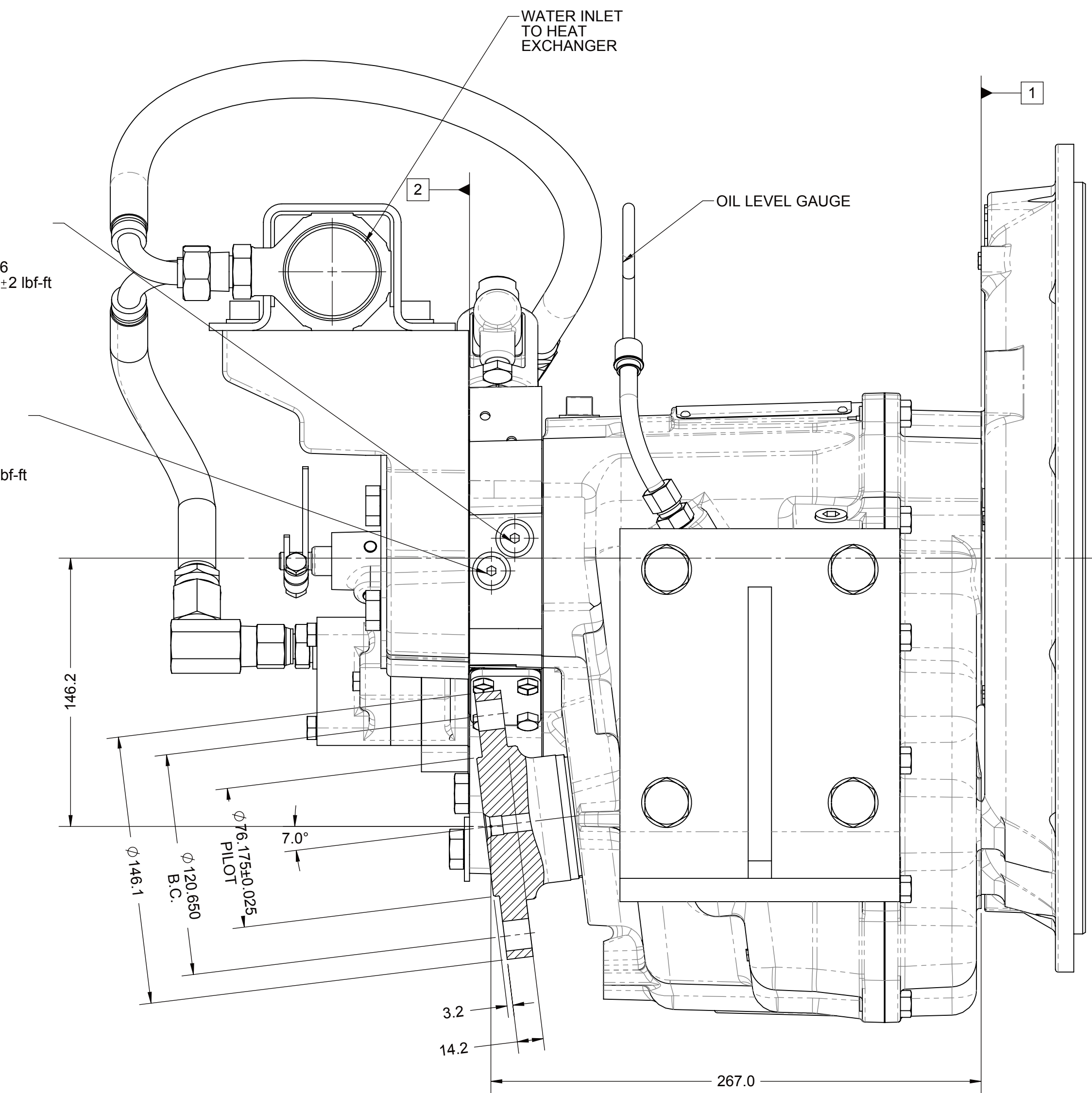


SECTION A-A



PRIMARY CLUTCH PRESSURE PORT
1/2-20UNF THREAD
CONFORMS TO SAE J1926
TIGHTENING TORQUE 15 ± 2 lbf-ft
Z_{PC}

PRIMARY CLUTCH LUBE PRESSURE PORT
1/2-20 UNF THREAD
CONFORMS TO SAE J1926
TIGHTENING TORQUE 15 ± 2 lbf-ft
G



NOTES:
ALL POINTS AVAILABLE FOR TESTING ARE CODED

EQUIPMENT SHOWN:
- MG-5061A PER PX11640
- SAE#3 ADAPTOR HOUSING
- ELECTRIC CONTROL VALVE
- WITH MECHANICAL TROLLING VALVE
- SAE 101-2, 22-4 OR 25-4 LIVE PTO
- MOUNTED PM1100 HEAT EXCHANGER
- 1016428R MOUNTING BRACKETS

FIRST USE ASSEMBLY PX11640 FIRST USE MODEL MG-5061A SIMILAR TO:	WEIGHT 113.12 113.12 113.12	THIRD ANGLE PROJECTION	MATERIAL	DATE 04/03/2014
			HEAT TREAT	SCALE 1:2
				DRAWN BY PM
				CHECKED BY ALC
				APPROVED BY ALC
				DATE 04/03/2014
				SHEET 1 OF 1
				REV A

NOTICE: THIS PRINT CONTAINS PROPRIETARY INFORMATION AND IS NOT TO BE USED IN ANY MANNER WITHOUT THE WRITTEN PERMISSION OF METRIC TWIN DISC, INCORPORATED.
THIS PRINT IS THE PROPERTY OF METRIC TWIN DISC, INCORPORATED. IT IS TO BE USED ONLY FOR THE PURPOSES SPECIFIED BY THE USER.
GEOMETRIC TOLERANCES ARE PER ASME Y14.5M-2014.

DESCRIPTION: INSTALLATION
MG-5061A

TWIN DISC, INCORPORATED
RACINE, WI 53403 - USA
1026225A