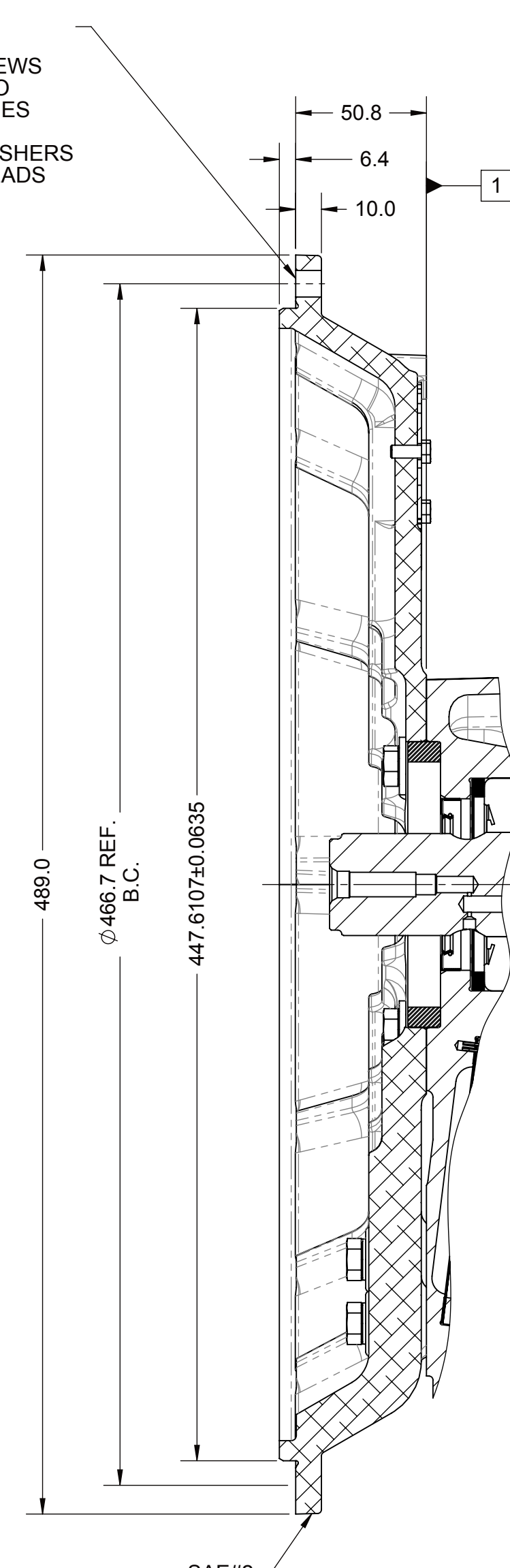
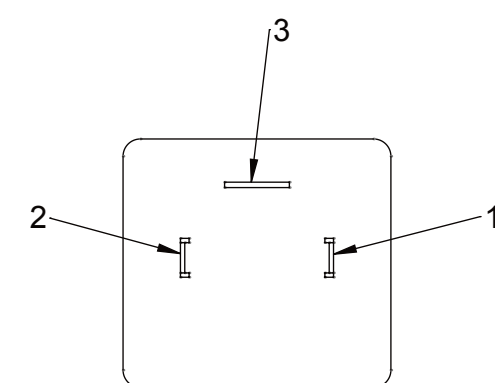
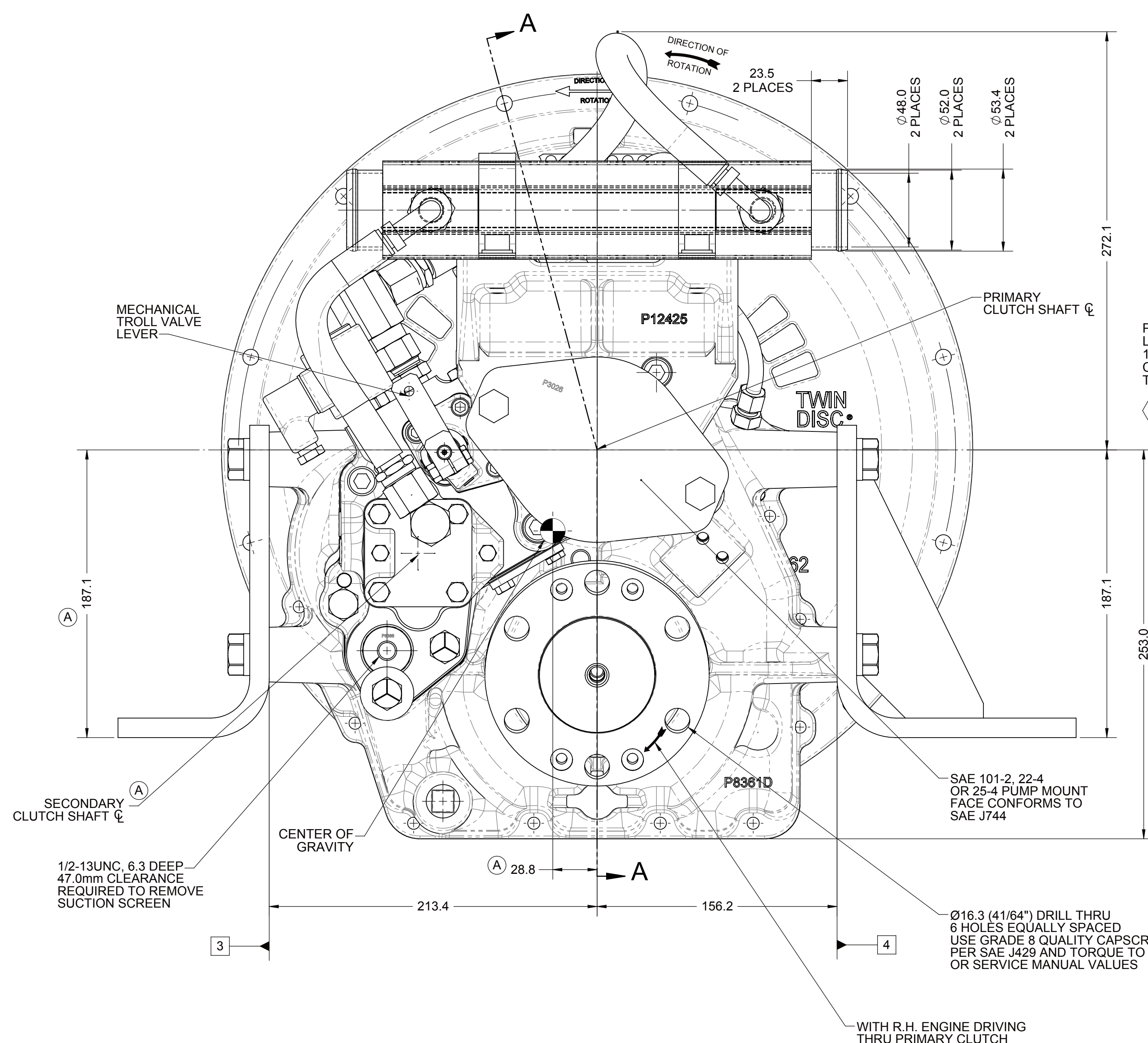
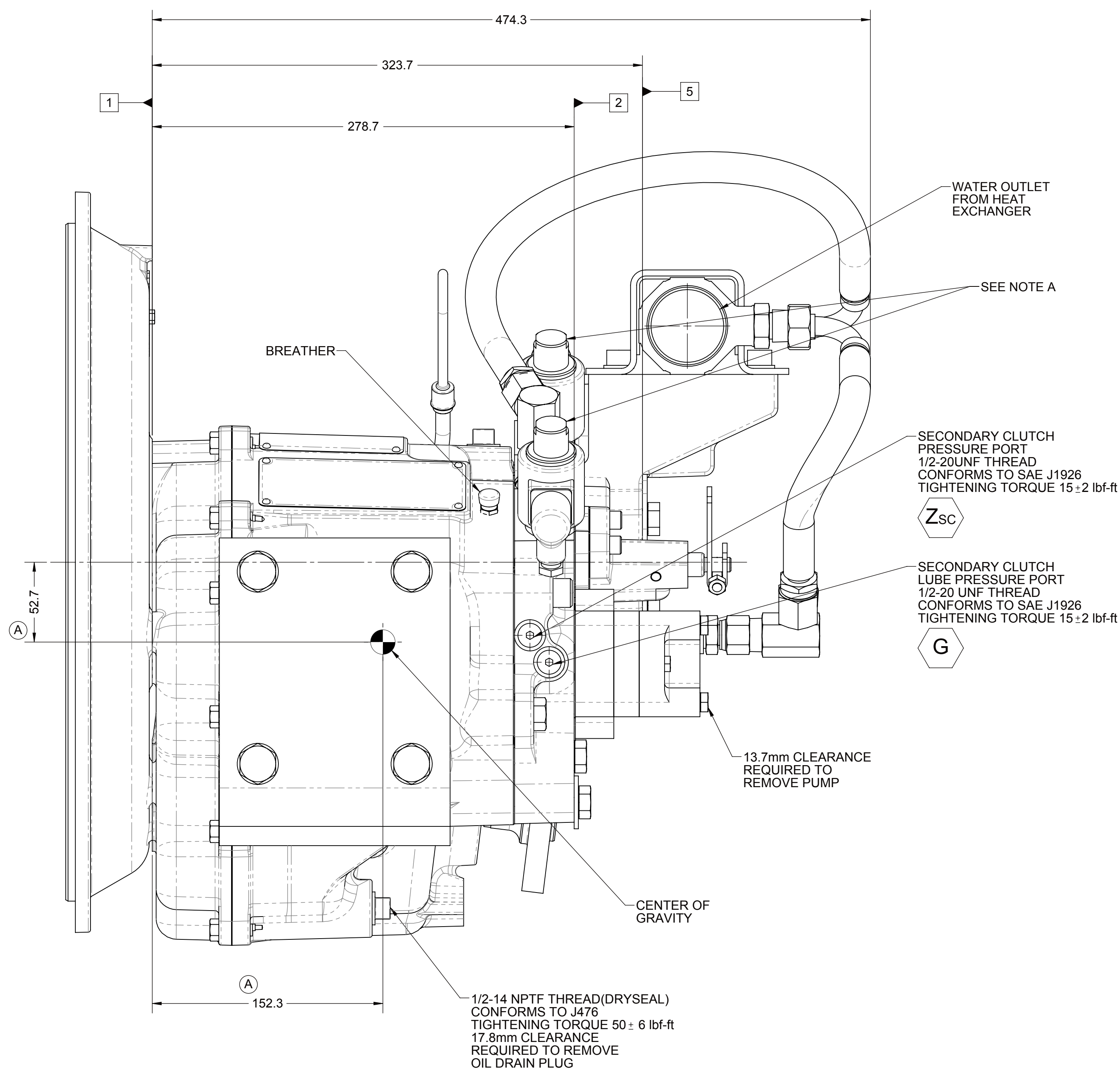
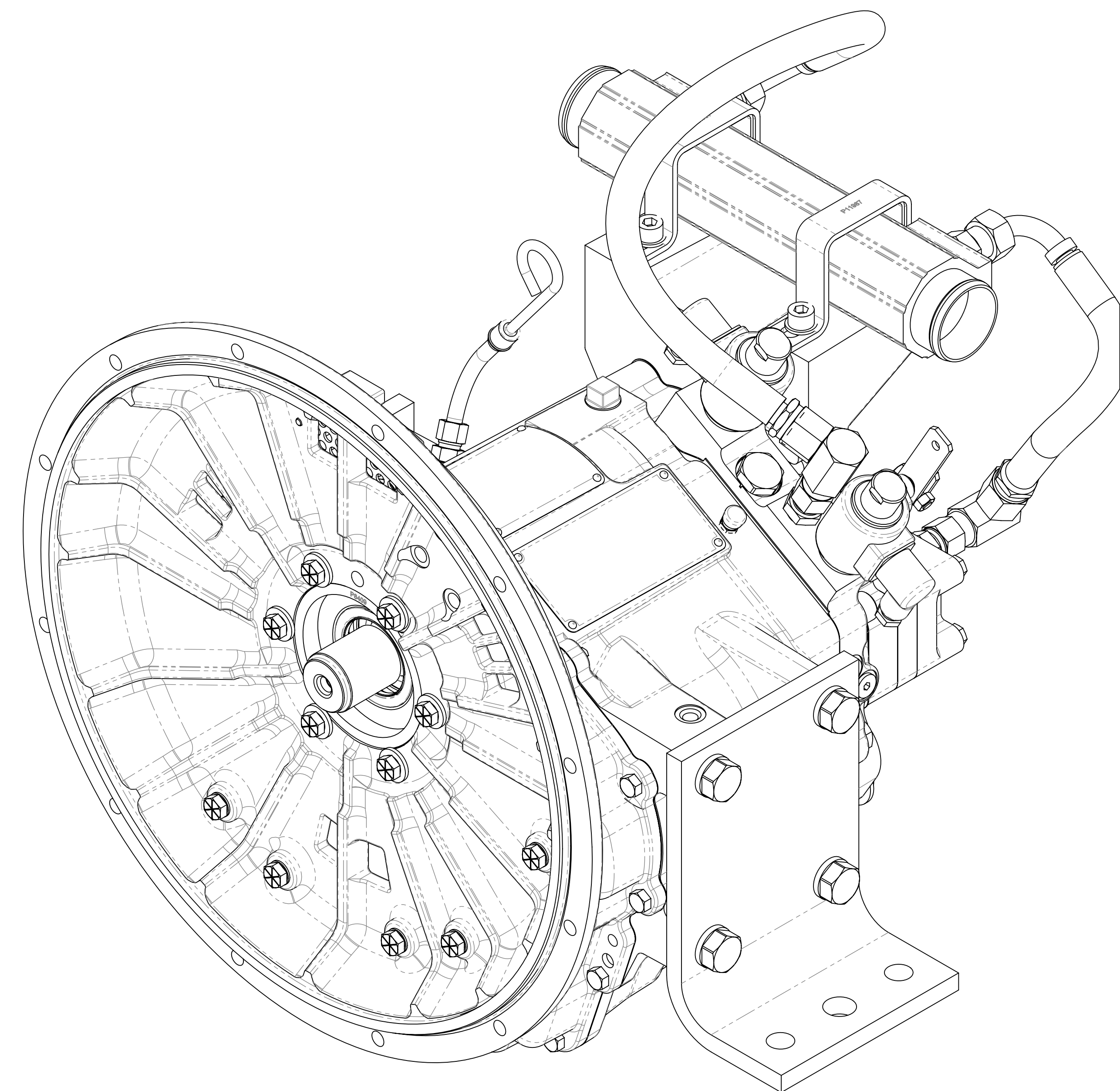


- Ø10.3 DRILL THRU
12 HOLES EQUALLY SPACED
USE GRADE 5 QUALITY CAPSCREWS
PER S.A.E. J 429 AND TORQUE TO
S574 OR SERVICE MANUAL VALUES
- USE HARDENED FLAT STEEL WASHERS
R 30N:61 MIN. UNDER SCREW HEADS
GRADE 5 MIN. AND TORQUE TO
S574 VALUES

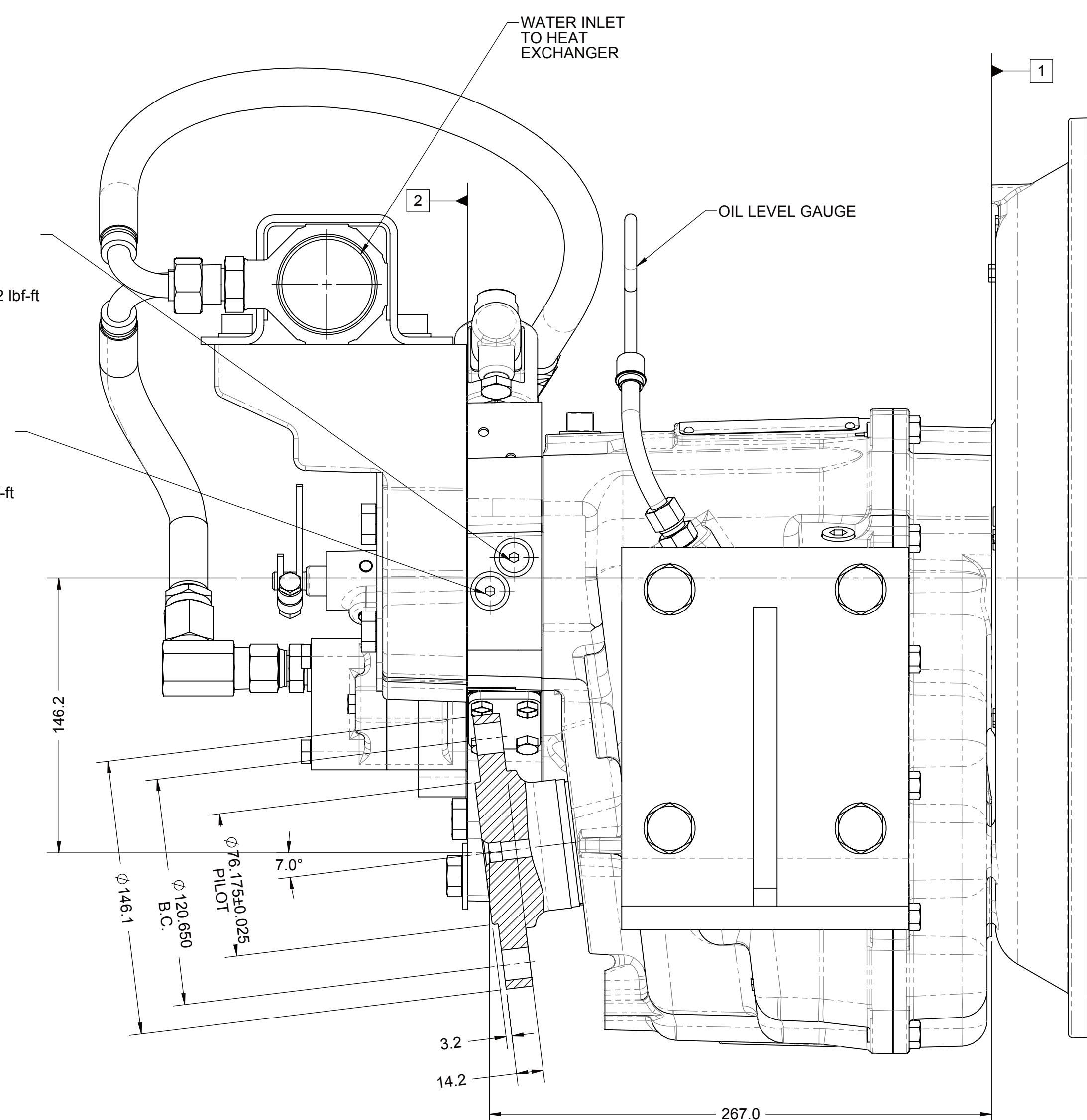
- A. MANUAL OVERRIDE VALVE OPERATION
 1. THE MANUAL OVERRIDE FEATURE FOR THE PRIMARY AND SECONDARY SOLENOIDS MUST NEVER BE ENGAGED SIMULTANEOUSLY.
 2. THE MANUAL OVERRIDE BUTTON FOR BOTH THE PRIMARY AND SECONDARY SOLENOIDS MUST BE IN THE NEUTRAL POSITION TO OPERATE EITHER SOLENOID ELECTRICALLY.
 3. TO ENGAGE PRIMARY CLUTCH USING THE MANUAL OVERRIDE
 - a. REMOVE PROTECTIVE CAP FROM THE PRIMARY SOLENOID PUSH BUTTON DOWN
 - b. CONTINUE TO PUSH BUTTON AND ROTATE CLOCKWISE 180°
 - c. RELEASE BUTTON
 4. TO ENGAGE SECONDARY CLUTCH USING THE MANUAL OVERRIDE
 - a. REMOVE PROTECTIVE CAP FROM THE SECONDARY SOLENOID
 - b. PUSH BUTTON DOWN
 - c. CONTINUE TO PUSH BUTTON AND ROTATE CLOCKWISE 180°
 - d. RELEASE BUTTON
 5. TO RETURN EITHER OF THE PRIMARY OR SECONDARY MANUAL OVERRIDE TO THE NEUTRAL POSITION:
 - a. PUSH BUTTON DOWN
 - b. CONTINUE TO PUSH BUTTON AND ROTATE COUNTER-CLOCKWISE 180°
 - c. RELEASE BUTTON
 - d. INSTALL PROTECTIVE CAP OVER THE MANUAL OVERRIDE BUTTON

TERMINAL 3 :GROUND

[illegible]

PRIMARY CLUTCH
PRESSURE PORT
1/2-20UNF THREAD
CONFORMS TO SAE J1926
TIGHTENING TORQUE 15 ± 2 lbf-ft



PRIMARY CLUTCH
TUBE PRESSURE PORT
1/2-20 UNF THREAD
CONFORMS TO SAE J1926
TIGHTENING TORQUE 15±2 lbf-ft



NOTES:
ALL POINTS AVAILABLE FOR TESTING ARE CODED

EQUIPMENT SHOWN:

- MG-5061A PER PX11640
- SAE#2 ADAPTOR HOUSING
- ELECTRIC CONTROL VALVE WITH MECHANICAL TROLLING VALVE
- SAE 101-2, 22-4 OR 25-4 LIVE PTO
- MOUNTED PM1190 HEAT EXCHANGER
- 1016428R MOUNTING BRACKETS

FIRST USE ASSEMBLY: FIRST USE MODEL: SIMILAR TO:		WEIGHT: 113.92 WGT: kg		THIRD ANGLE PROJECTION	MATERIAL: HEAT TREAT:	DATE: 04/18/2014 SCALE: 1/2	 RACINE, WI 53408 - USA	
METRIC NOTICE: THIS PRINT CONTAINS PROPRIETARY INFORMATION AND IS NOT TO BE REPRODUCED OR TRANSMITTED IN ANY FORM OR BY ANY MEANS, ELECTRONIC OR MECHANICAL, INCLUDING PHOTOCOPYING, RECORDING, OR BY ANY INFORMATION STORAGE AND RETRIEVAL SYSTEM. ALL RIGHTS ARE RESERVED. THIS INFORMATION IS GRANTED TO YOU BY THE U.S. GOVERNMENT OF OTHERS BY CONTRACT.			UNLESS OTHERWISE SPECIFIED MACHINED DIMENSIONS ±0.25 X.X ±0.25 X.XX ±0.13 ALL ANGULAR TOLERANCES ±1° GEOMETRIC TOLERANCES AS APPROVED PER ASME Y14.5-1994		DRAWING: PM CKD DATE: 04-11-14 APPROVED BY: ALC		1026225C DWG SIZE: A0	SHEET: 1 OF 1 REV: A
			DESCRIPTION: INSTALLATION MG-501A		TWIN DISC, INCORPORATED 1000 W. WISCONSIN AVE. RACINE, WI 53408-1000 TEL: 920.735.0000 FAX: 920.735.0001 WWW.TWINDISC.COM			