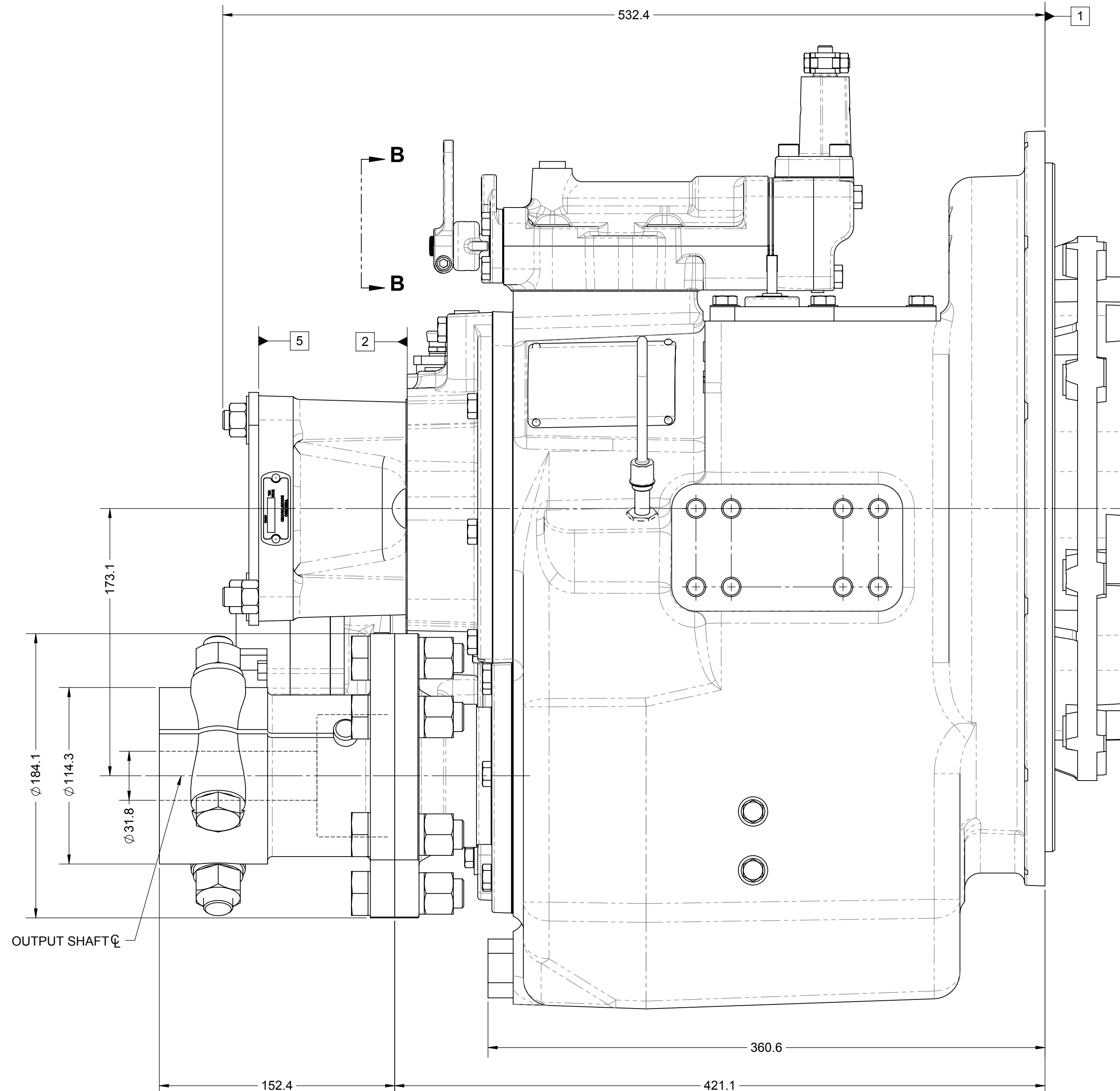
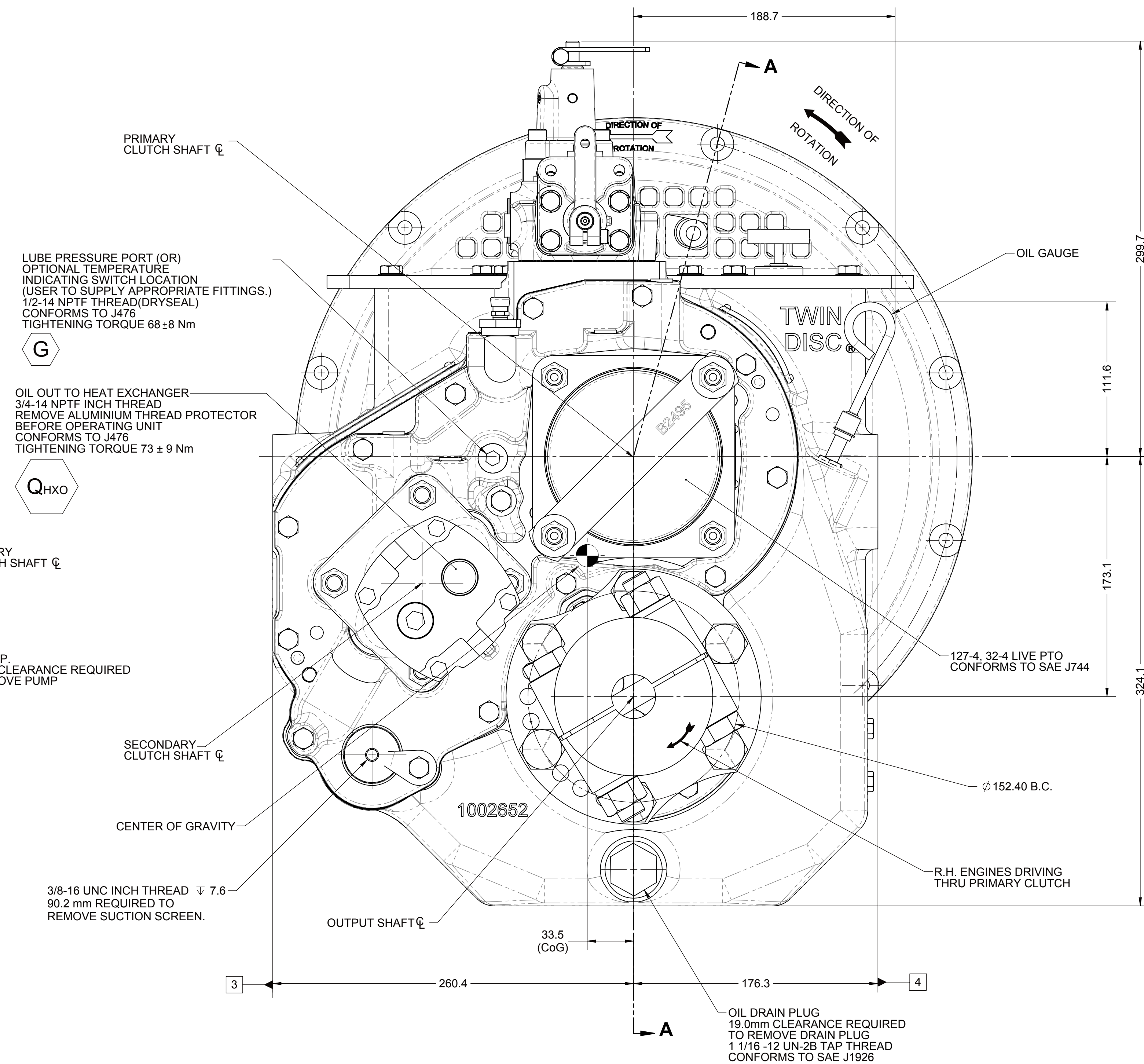
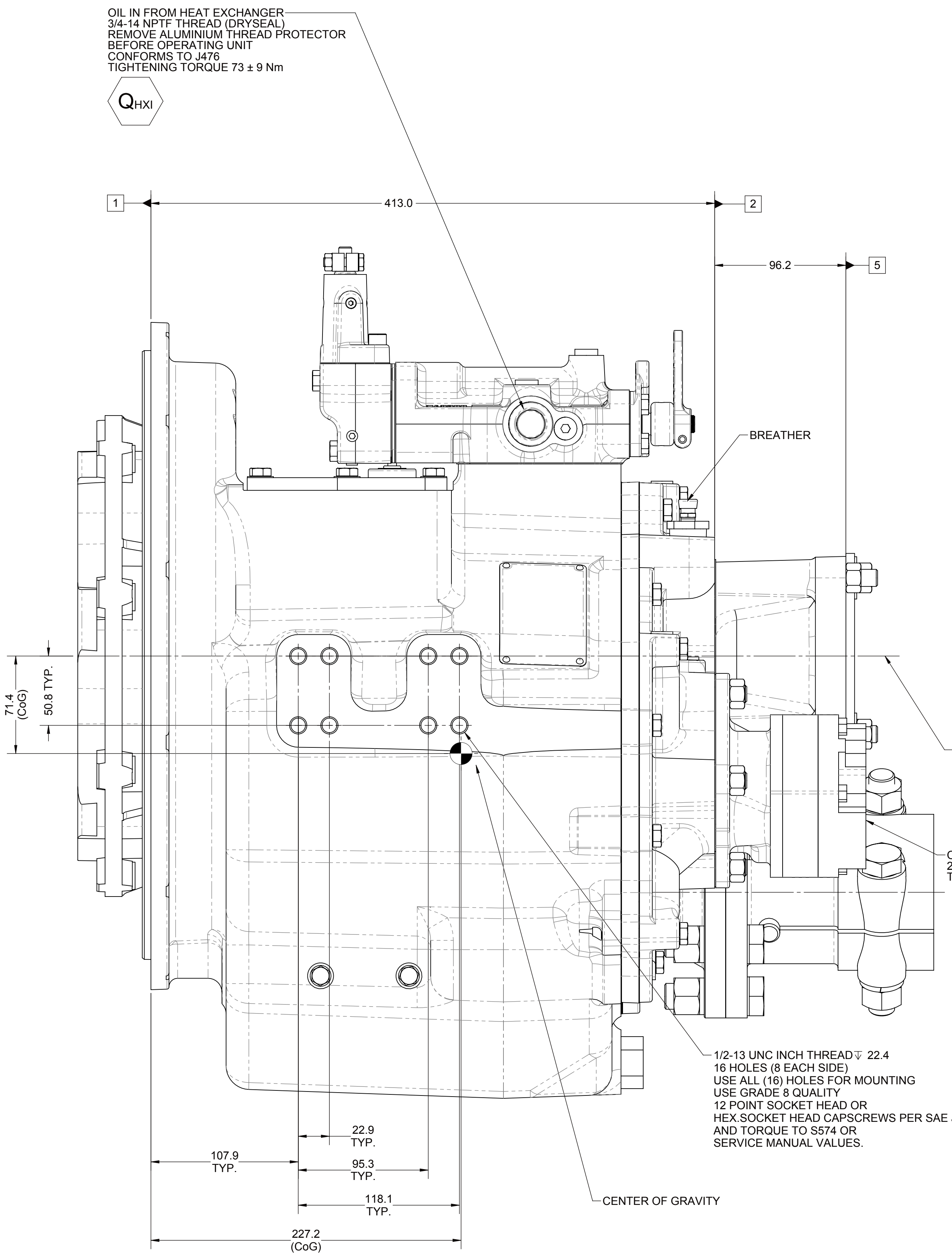
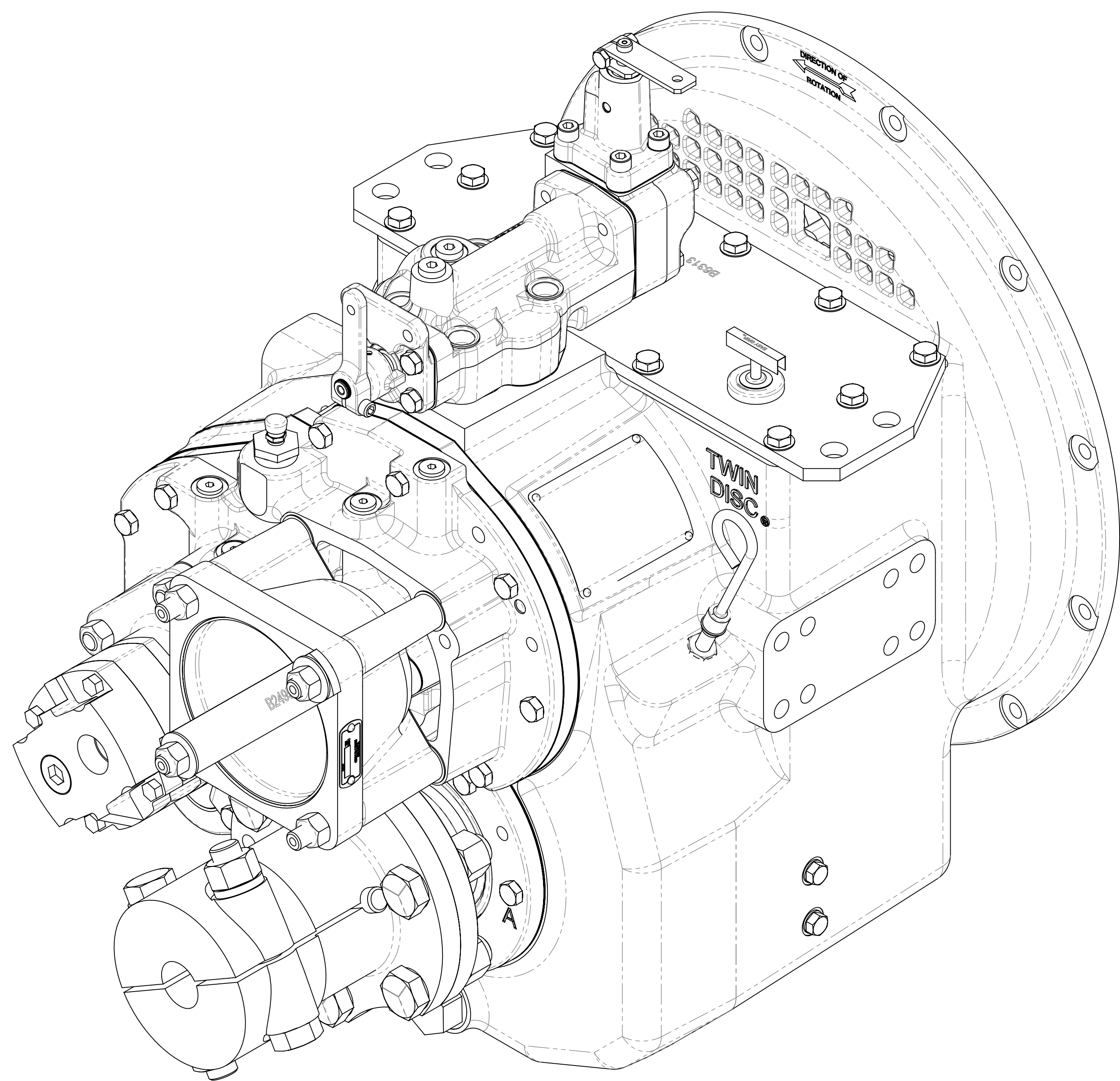
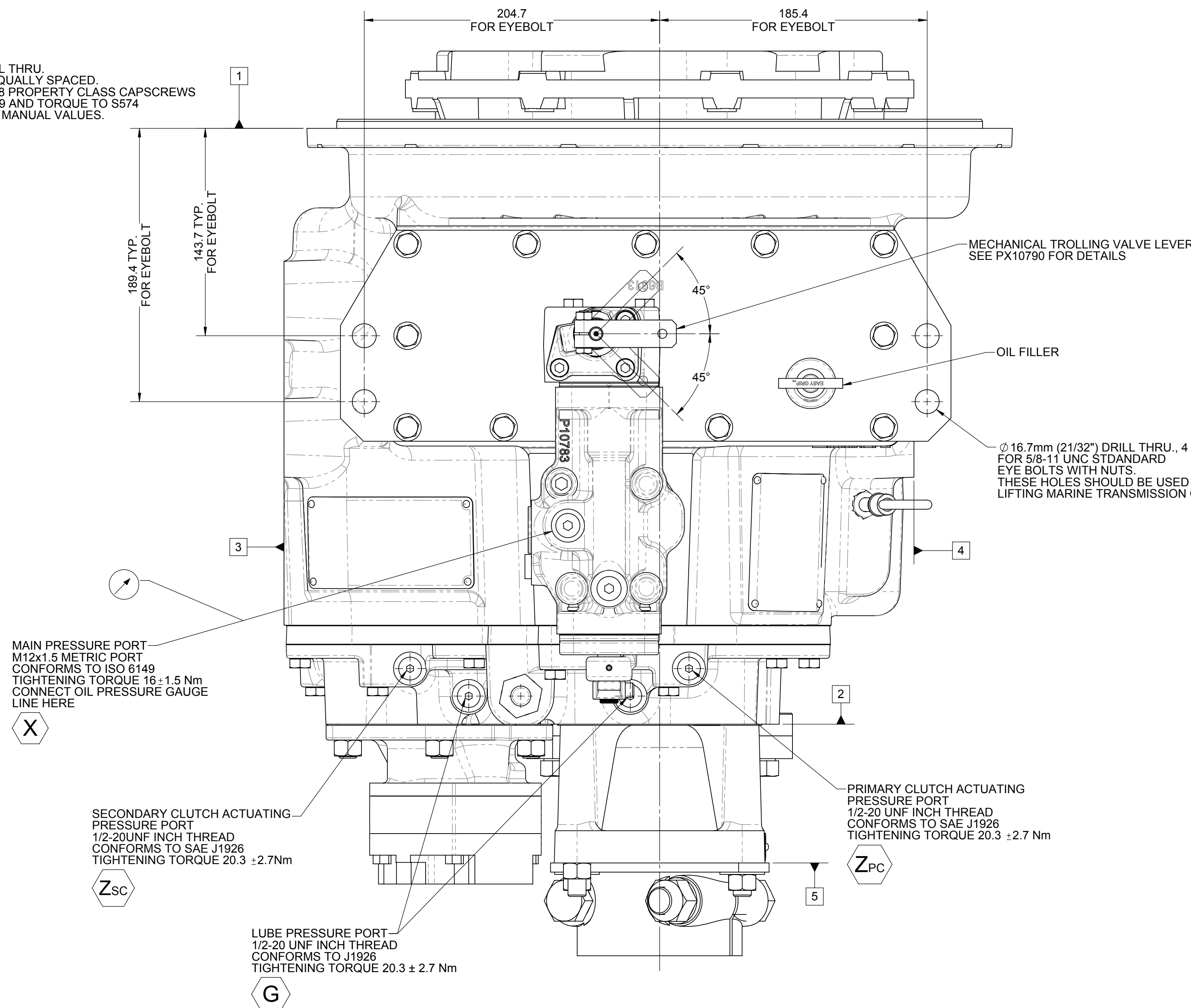
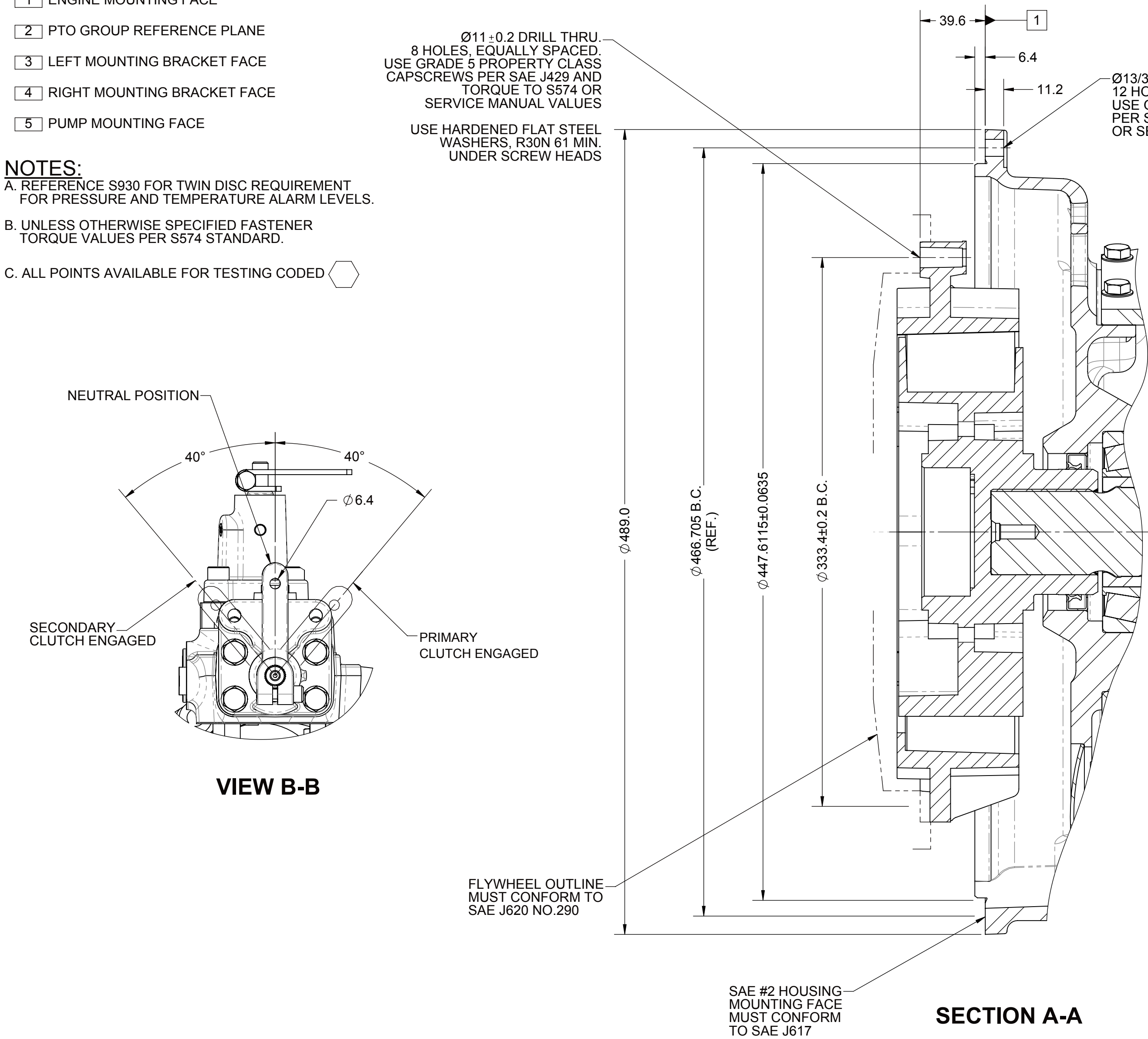
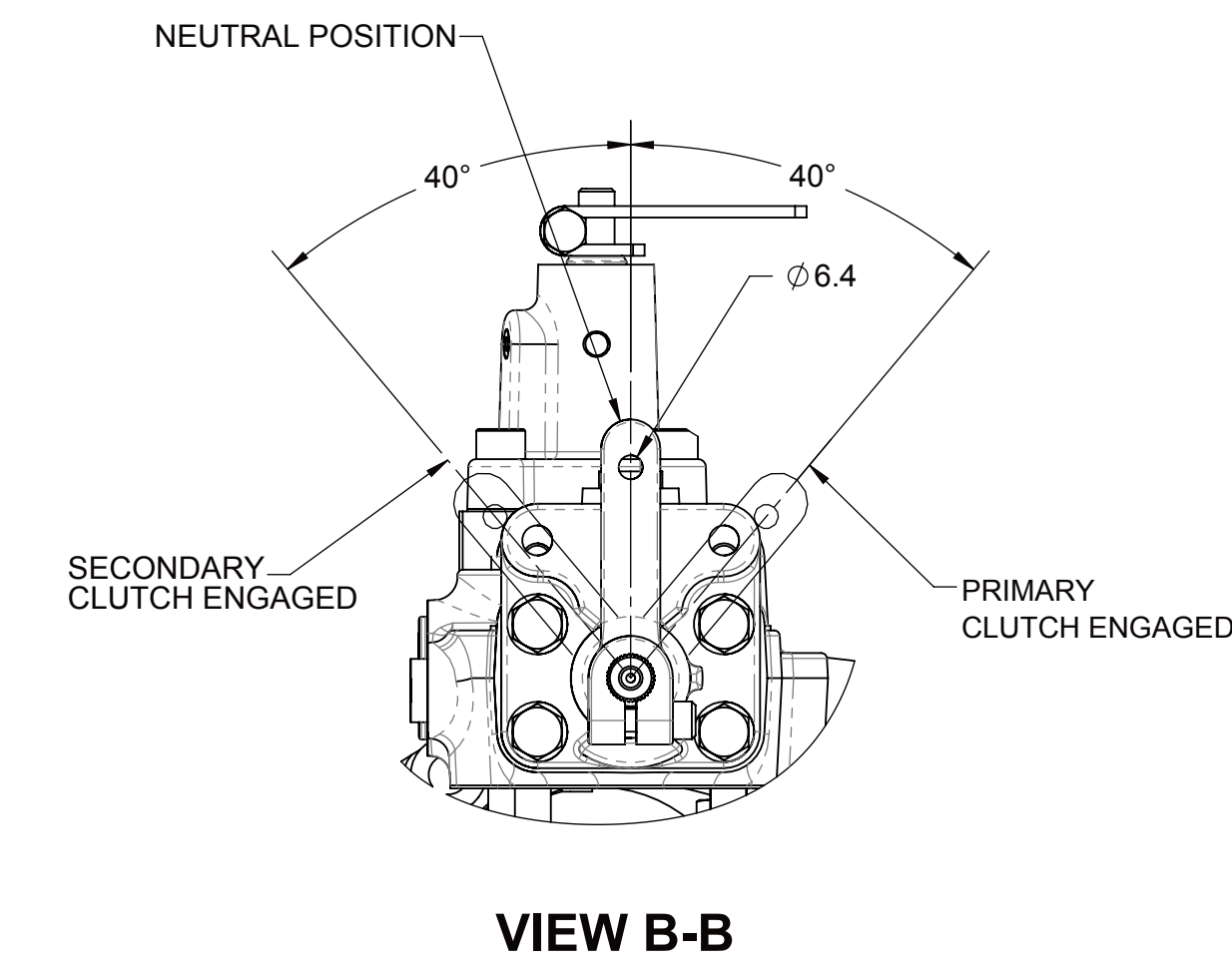


- 1 ENGINE MOUNTING FACE  
2 PTO GROUP REFERENCE PLANE  
3 LEFT MOUNTING BRACKET FACE  
4 RIGHT MOUNTING BRACKET FACE  
5 PUMP MOUNTING FACE

NOTES:  
A. REFERENCE S830 FOR TWIN DISC REQUIREMENT FOR PRESSURE AND TEMPERATURE ALARM LEVELS.  
B. UNLESS OTHERWISE SPECIFIED FASTENER TORQUE VALUES PER S574 STANDARD.  
C. ALL POINTS AVAILABLE FOR TESTING CODED



EQUIPMENT SHOWN:  
- MG-5091SC PER PX10016 ASSEMBLY  
- SAE #2 / SAE 290 - CF-R-218-HR  
- MECH CONTROL VALVE WITH TROLLING  
- SAE J744 127-4, 32-4 LIVE PTO  
- 1001882 COMPANION FLANGE

FIRST USE ASSEMBLY: FIRST USE MODEL: MG-5091SC SIMILAR TO:	WEIGHT: 235.1 kg UNLESS OTHERWISE SPECIFIED DIMENSIONS ARE IN INCHES (X.XX) ALL ANGLES UNLESS NOTED GEOMETRIC TOLERANCES PER ASME Y14.5M-1994	DATE: 12/19/2017 SCALE: 1:2 DRAWN BY: DV CHECKED BY: DV APPROVED BY: DV	DATE: 12/19/2017 SCALE: 1:2 DRAWN BY: DV CHECKED BY: DV APPROVED BY: DV	DESCRIPTION: INSTALLATION MG-5091SC	REVISIONS: REV. 1 CHANGE NO. 1 DATE: 01/04/2018
------------------------------------------------------------------	-----------------------------------------------------------------------------------------------------------------------------------------------------------------	-------------------------------------------------------------------------------------	-------------------------------------------------------------------------------------	----------------------------------------	----------------------------------------------------------

TWIN DISC

RACINE, WI 53403 - USA

1026295F

SHEET 1 OF 1

1026295 Rev. A