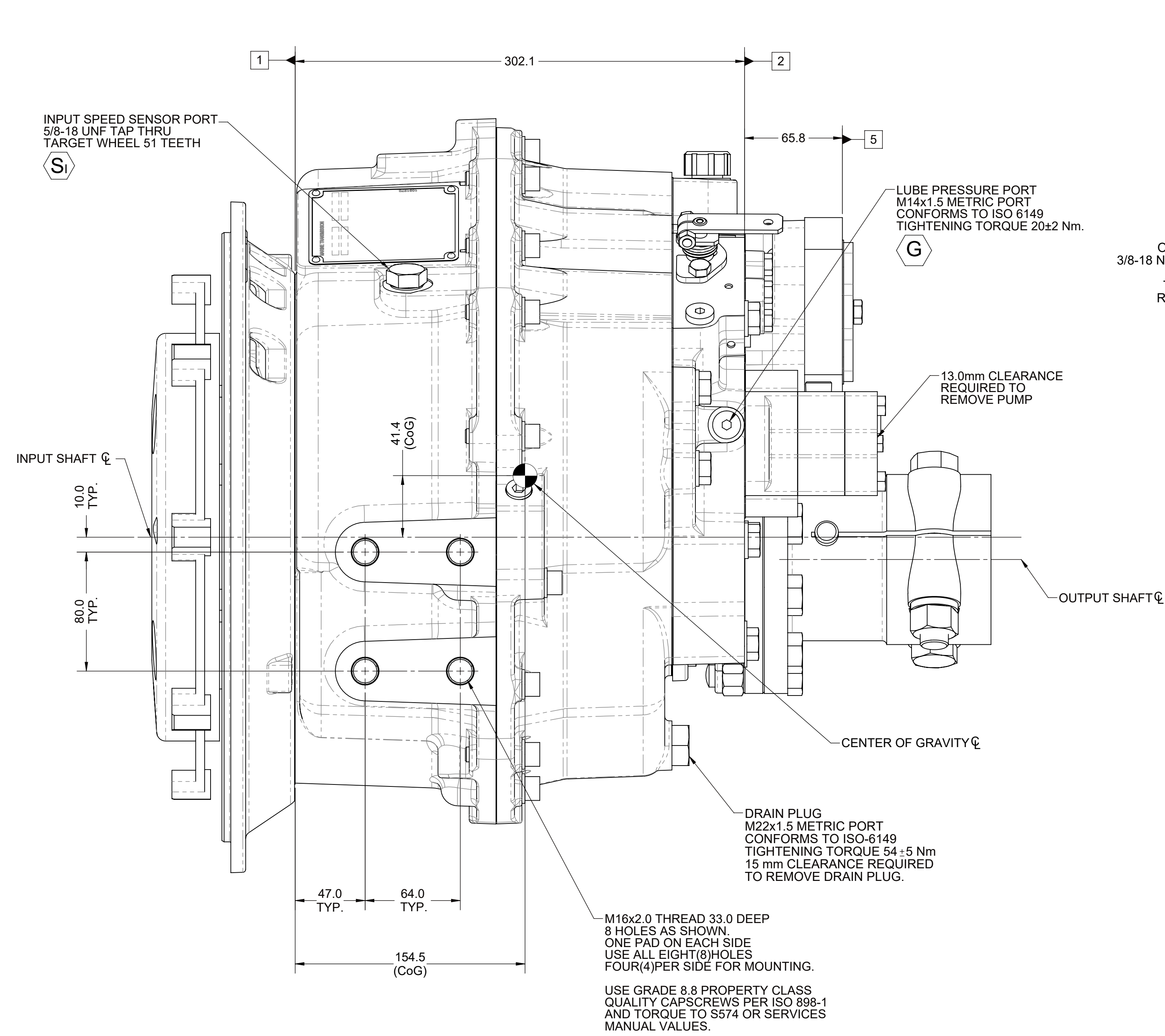
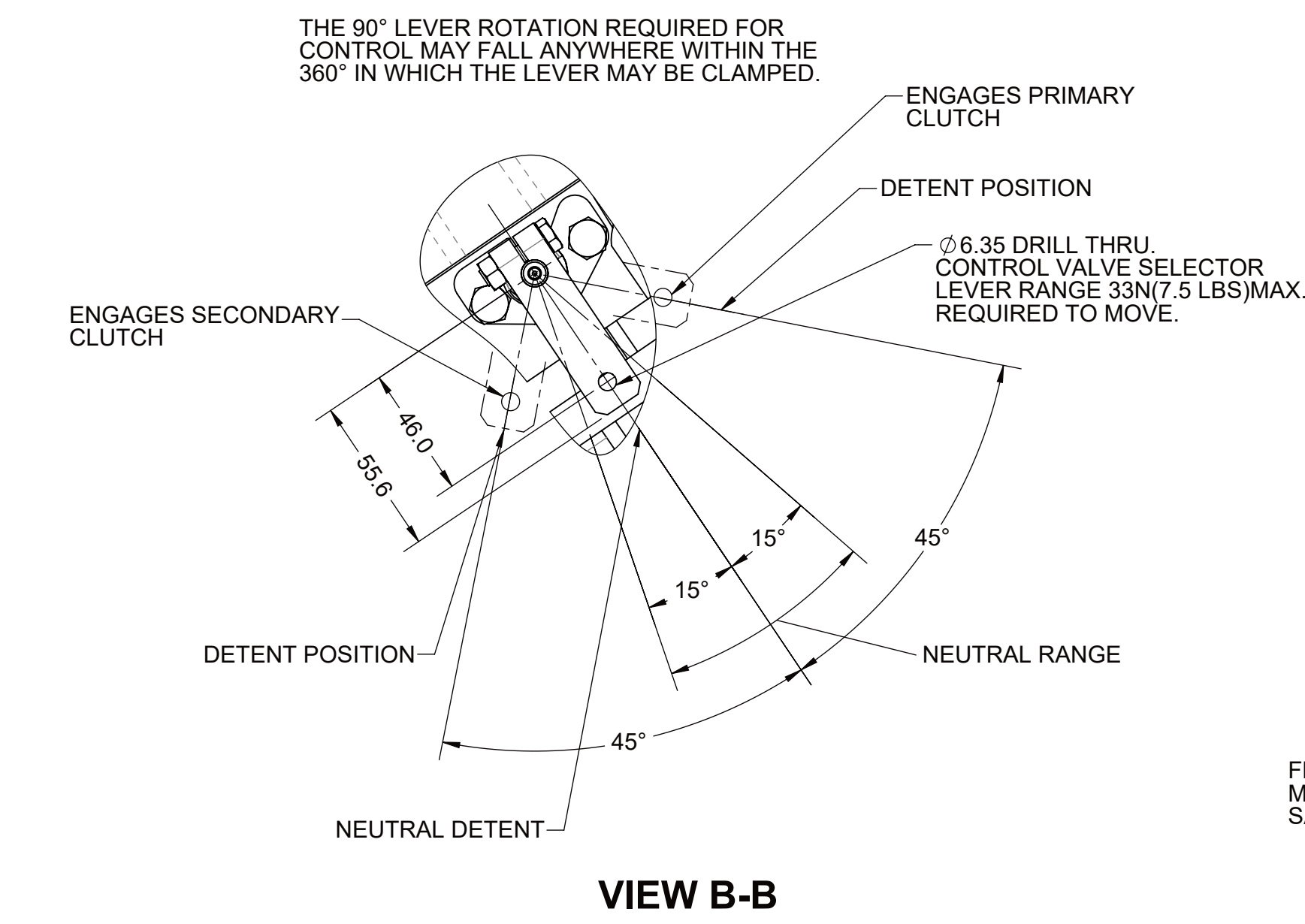


- 1 INPUT GROUP MOUNTING FACE
2 PTO GROUP MOUNTING FACE
3 LEFT BRACKET MOUNTING FACE
4 RIGHT BRACKET MOUNTING FACE
5 PUMP MOUNTING FACE

NOTES:
A. REFERENCE S830 FOR TWIN DISC REQUIREMENTS FOR PRESSURE AND ALARM LEVELS.
B. UNLESS OTHERWISE SPECIFIED, FASTENER TORQUE VALUES PER S574 STANDARD.
C. ALL POINTS AVAILABLE FOR TESTING ARE CODED



EQUIPMENT SHOWN:
- MG-5075SC PER PX10690 ASSEMBLY
- SAE #3 ADAPTOR / SAE 290 CENTA CF-DS-45 INPUT COUPLING
- MECHANICAL VALVE
- LIVE PTO, SAE J744, SAE 82-2, 16-4
- COMPANION FLANGE FOR GWB 587/42

Ø 10.3 (13/32") DRILL THRU
12 HOLES EQUALLY SPACED.
USE GRADE 8.8 PROPERTY CLASS
QUALITY CAPSCREWS PER ISO 898-1
AND TORQUE TO S574 OR
SERVICE MANUAL VALUES.

USE HARDENED
FLAT STEEL
WASHERS R30N-61MIN.
UNDER SCREW HEADS.

Ø 11.0 DRILL THRU.
8 HOLES EQUALLY SPACED
USE GRADE 8.8 PROPERTY CLASS
QUALITY CAPSCREWS PER ISO 898-1
AND TORQUE TO S574 OR
SERVICE MANUAL VALUES

SAE #3 HOUSING FACE—
MUST CONFORM TO SAE J617

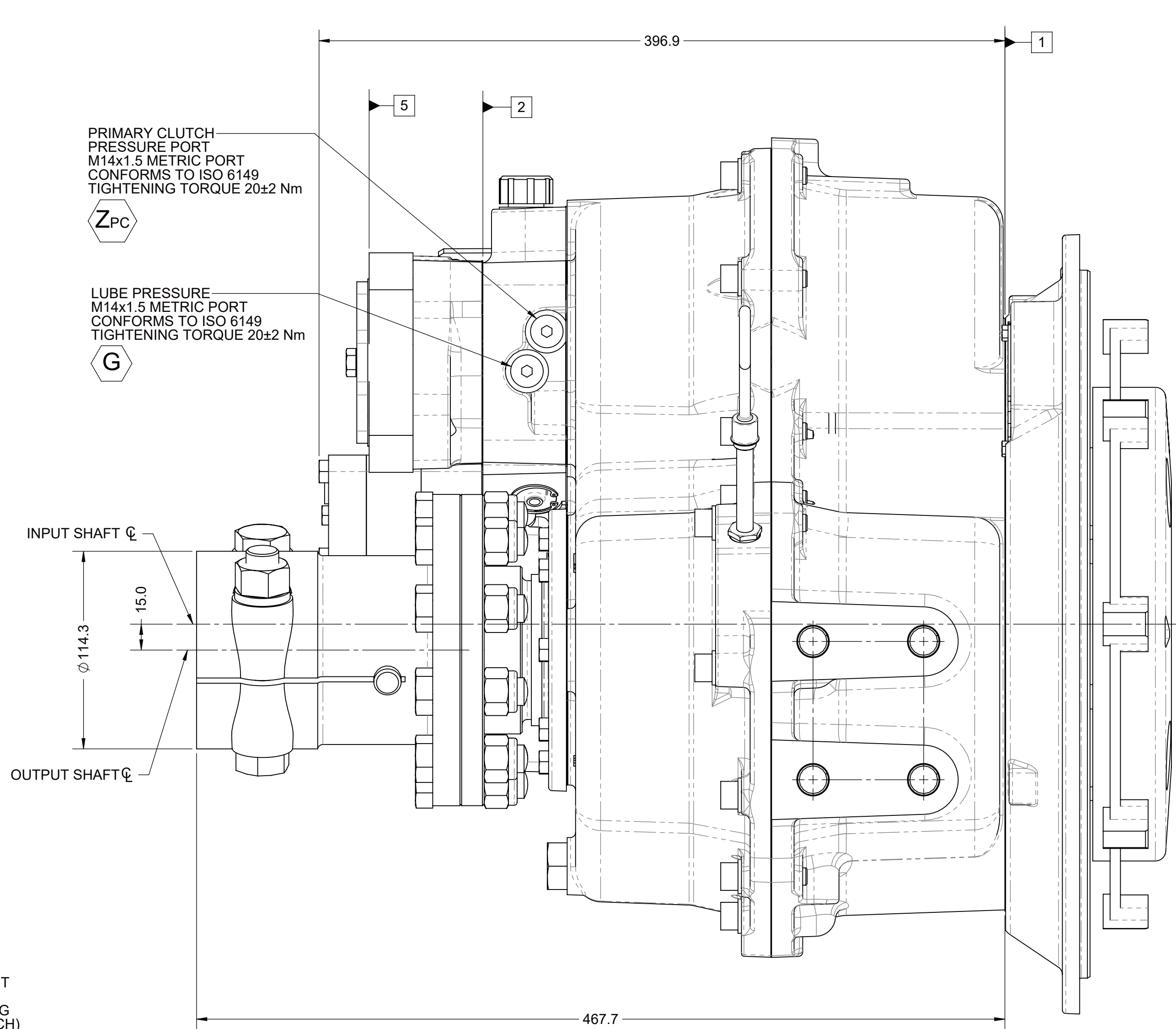
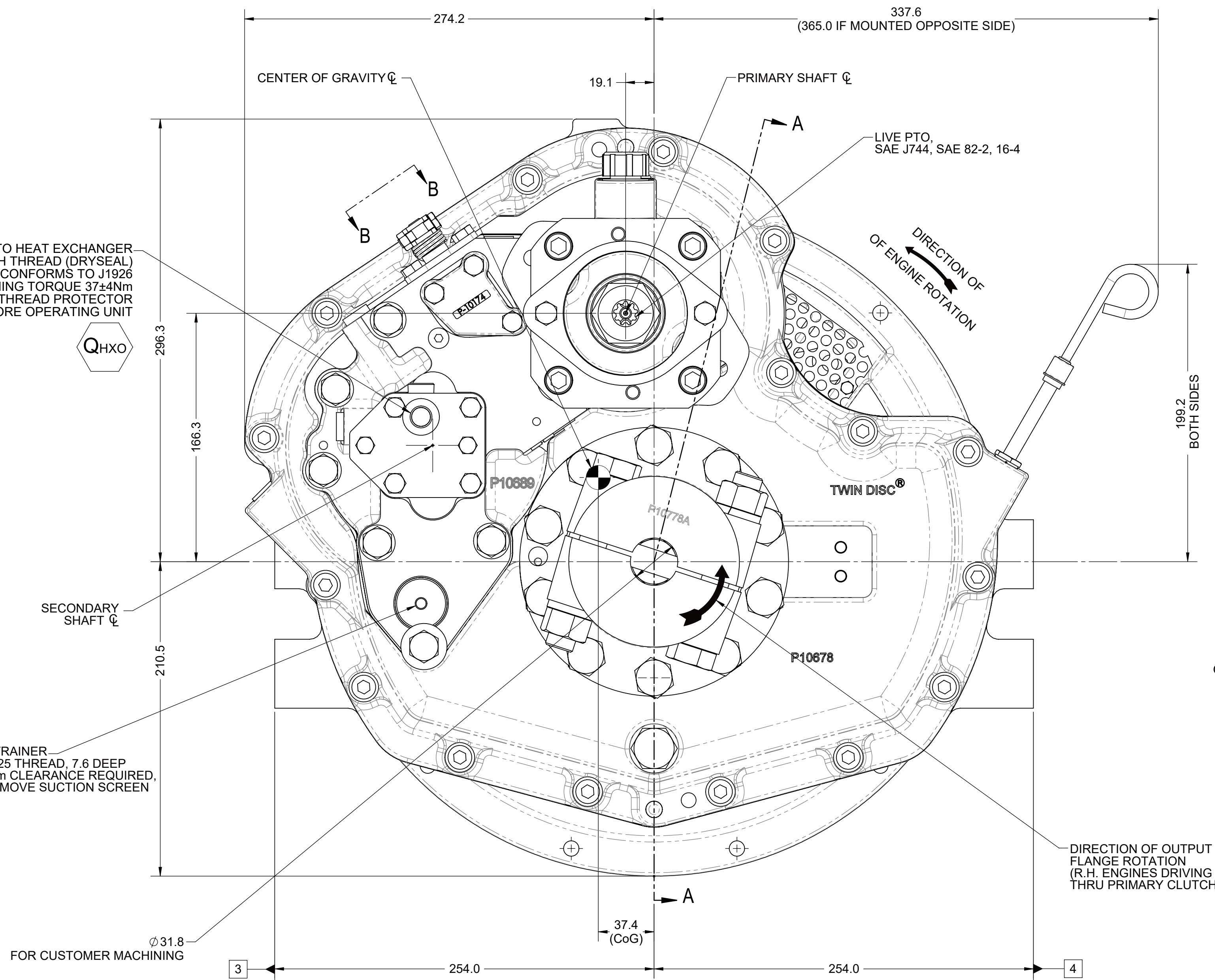
SECTION A-A

SECONDARY CLUTCH
PRESSURE PORT
M14x1.5 METRIC PORT
CONFORMS TO ISO 6149
TIGHTENING TORQUE 20±2 Nm
Zsc

ALTERNATE OIL OUT
TO HEAT EXCHANGER
3/8-18 NPTF INCH THREAD (DRYSEAL)
CONFORMS TO J1926
TIGHTENING TORQUE 37±4Nm
REMOVE THREAD PROTECTOR
BEFORE OPERATING UNIT
QHxo

MAIN PRESSURE PORT
M18x1.5 METRIC THREAD (DRYSEAL)
CONFORMS TO ISO 6149
TIGHTENING TORQUE 34 ± 3 Nm
CONNECT OIL PRESSURE
GAUGE LINE HERE.
X

OIL IN FROM HEAT EXCHANGER
M18x1.5 METRIC PORT
CONFORMS TO ISO 6149
TIGHTENING TORQUE 34 ± 3 Nm
REMOVE THREAD PROTECTOR
BEFORE OPERATING UNIT
QHxi



FIRST USE ASSEMBLY: FIRST USE MODEL: SIMILAR TO:	WEIGHT: 142kg 142lb	THIRD ANGLE PROJECTION	MATERIAL: HEAT TREAT:	DATE: 04/03/2019
SCALE: 1:2		DRAWN BY: LT		REVISED BY: DV
CHECKED BY: DV		APPROVED BY: DV		DATE: 04/03/2019
NOTES: THIS PRINT CONTAINS PROPRIETARY INFORMATION AND IS NOT TO BE REPRODUCED OR TRANSMITTED IN ANY FORM WITHOUT THE WRITTEN PERMISSION OF TWIN DISC, INC.		DESCRIPTION: INSTALLATION MG-5075SC		SHEET: 1 OF 1
TWIN DISC, INCORPORATED		RACINE, WI 53403 - USA		REV: