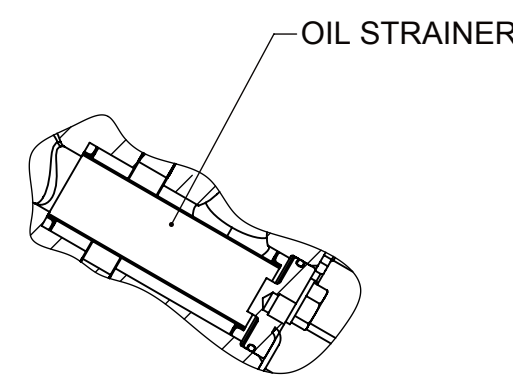
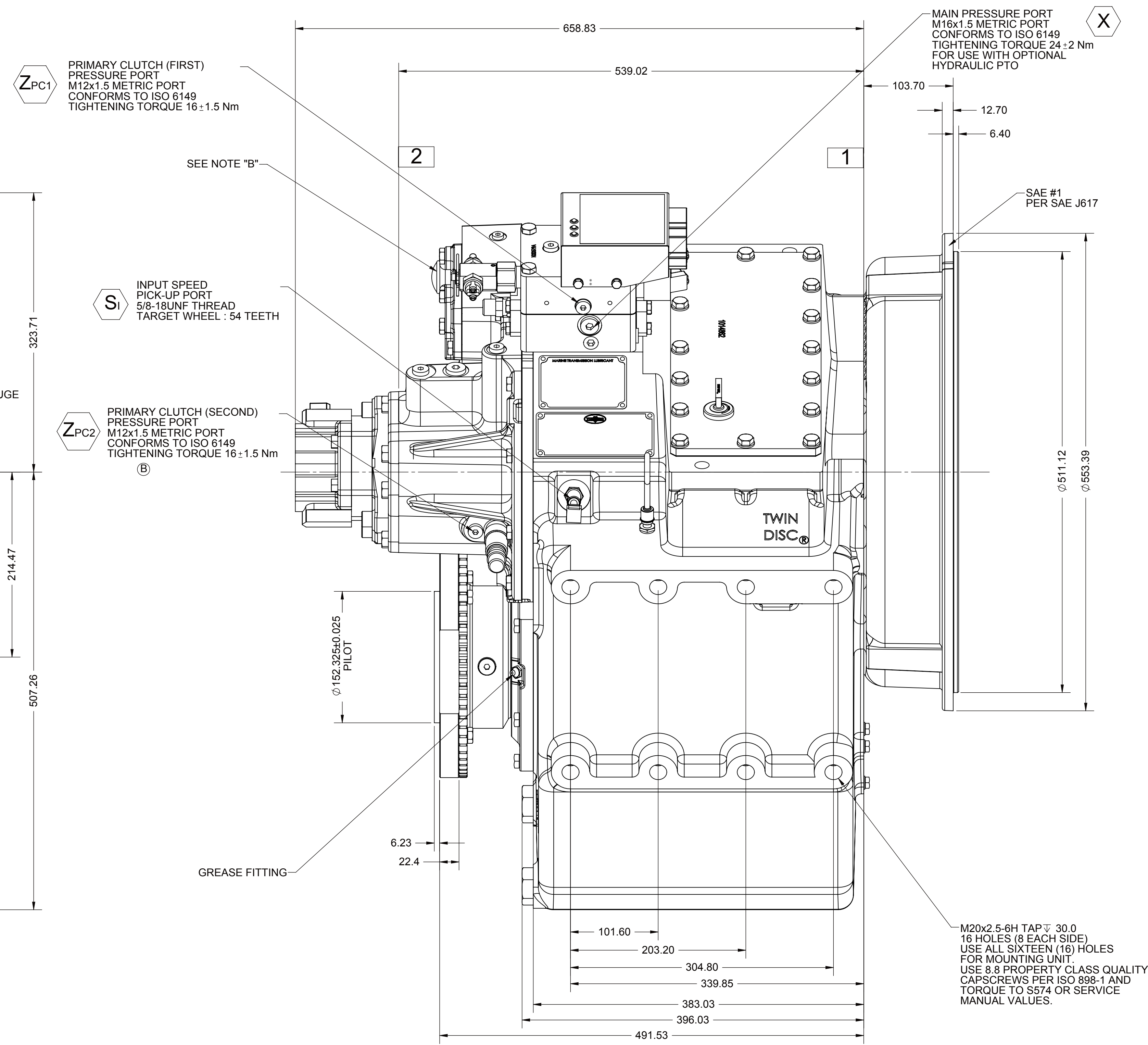
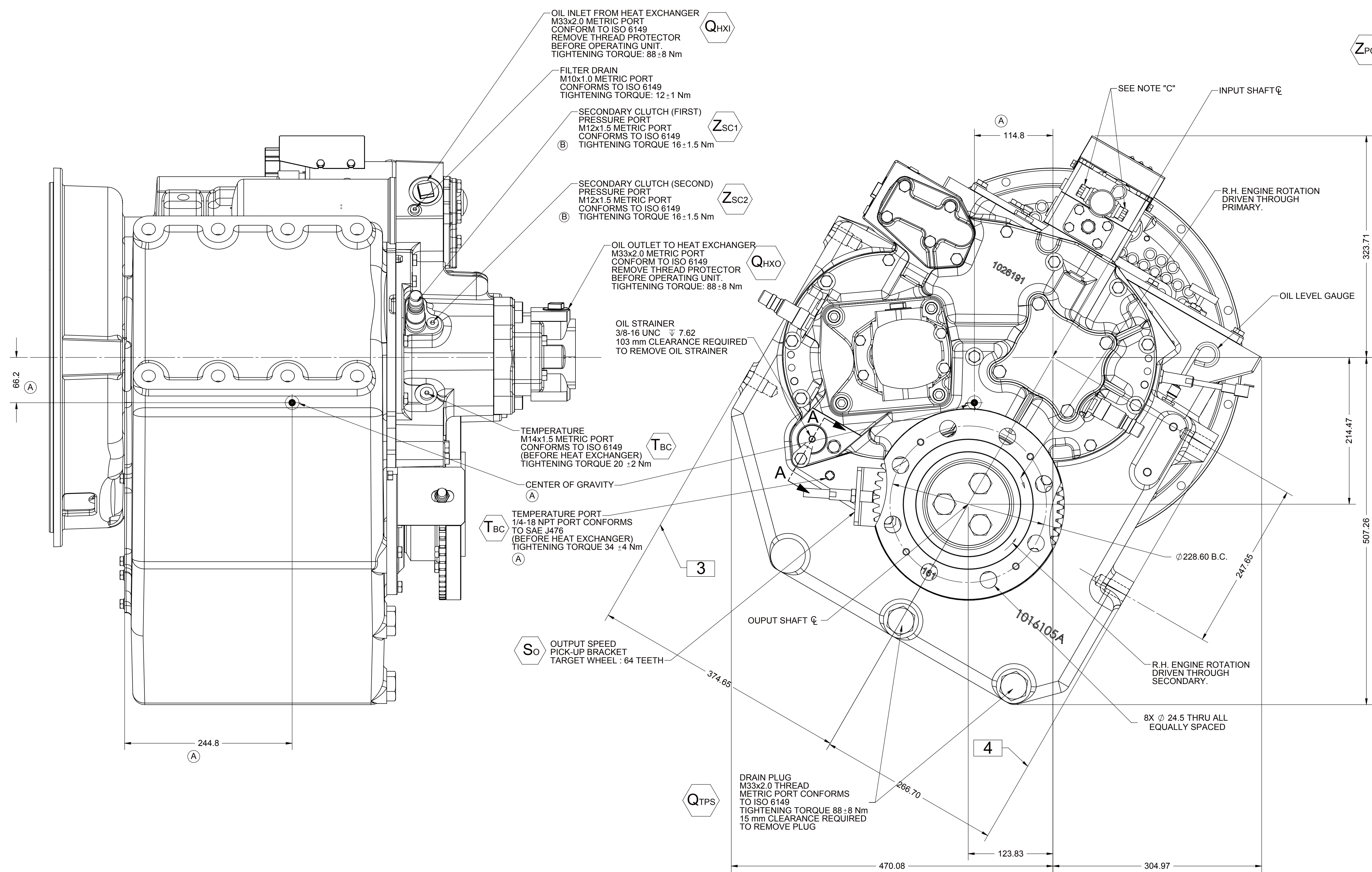
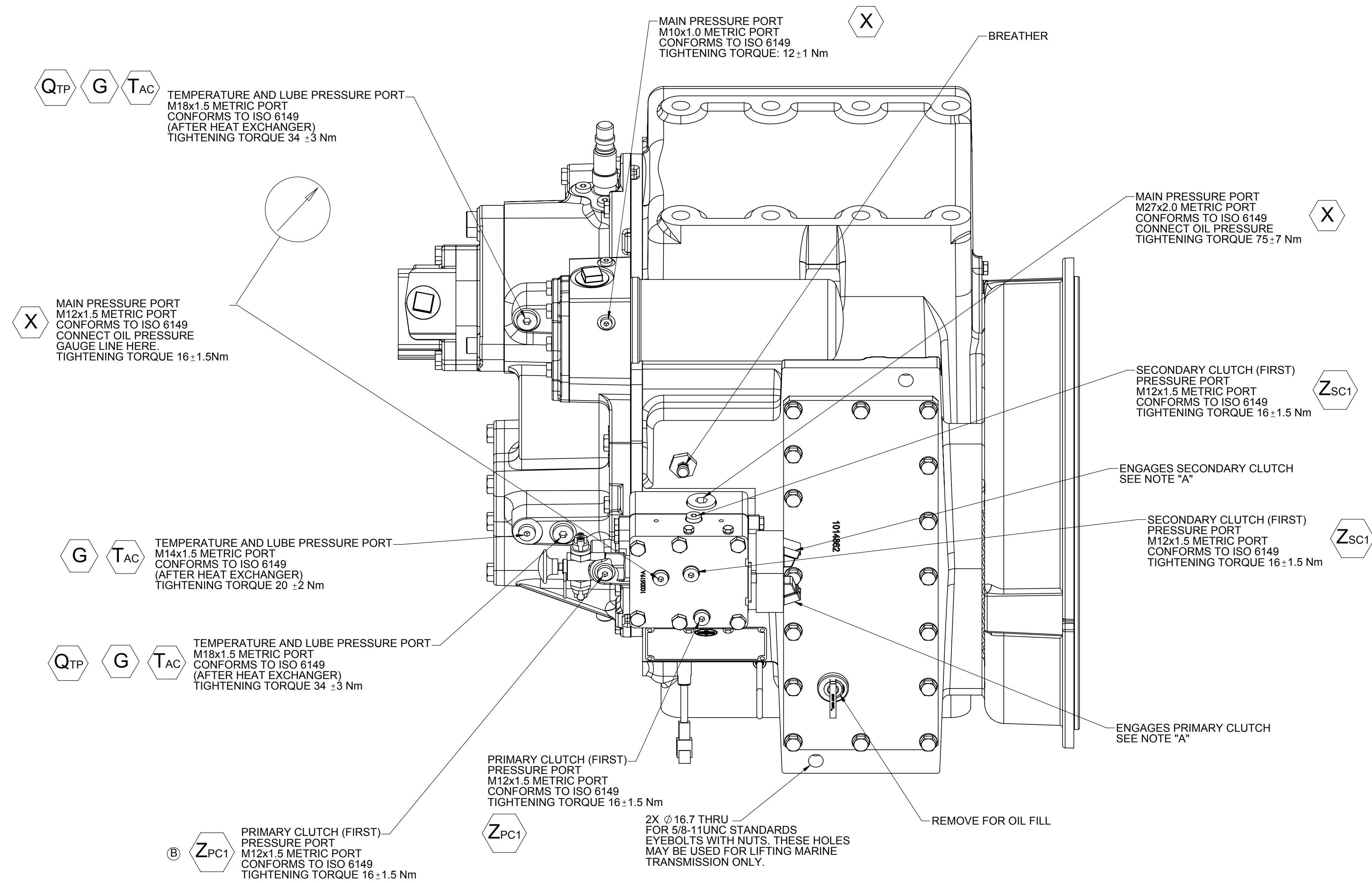
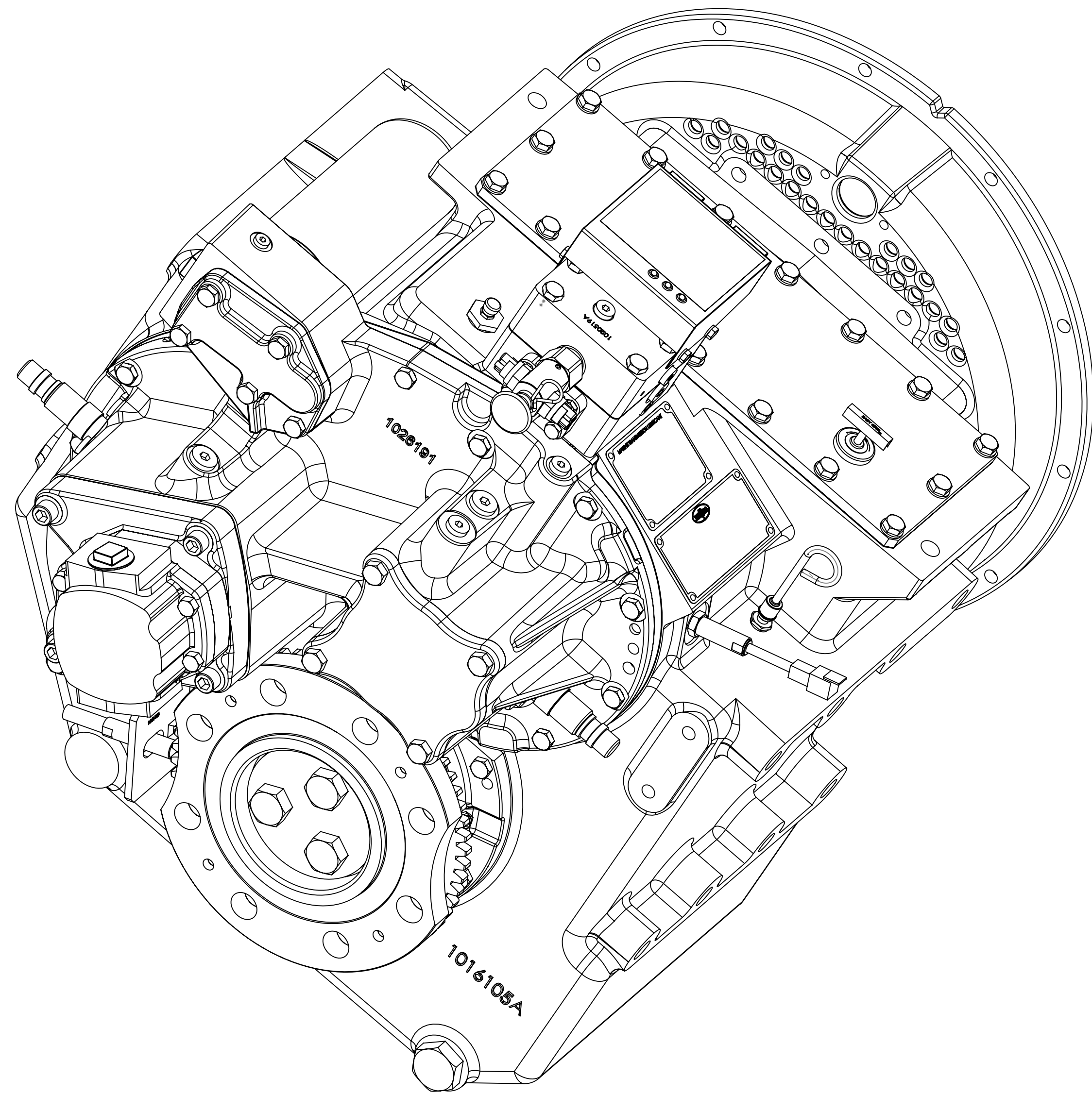


- NOTES:
- A. PROPORTIONAL CONTROL VALVE OPERATION
1. WARNING DO NOT CONNECT VALVE COIL DIRECTLY TO BATTERY/POWER SUPPLY VOLTAGE.
2. OPERATION TO BE PERFORMED WITH ONLY TWIN DISC CONTROL SYSTEMS OR MODULES.
- B. MANUAL DIRECTIONAL CONTROL VALVE OPERATION
1. WITH MANUAL DIRECTIONAL CONTROL VALVE IN CENTERED POSITION, PUSH TO ENGAGE SECONDARY CLUTCH.
2. WITH MANUAL DIRECTIONAL CONTROL VALVE IN CENTERED POSITION, PULL TO ENGAGE PRIMARY CLUTCH.
- C. MANUAL DIRECTIONAL CONTROL VALVE MODE SWITCH
1. SWITCH IS NORMALLY CLOSED WHEN MANUAL DIRECTIONAL CONTROL VALVE IS IN THE CENTERED POSITION AND OPEN WHEN LEVER IS ACTUATED FROM CENTERED POSITION.
2. CURRENT = 20 AMP MAX.
3. FOR WIRING SCHEMATIC, REFER TO CONTROL MODULE DRAWING.
- D. REFERENCE S930 FOR TWIN DISC REQUIREMENTS FOR PRESSURE AND TEMPERATURE ALARM LEVELS.
- E. ALL POINTS AVAILABLE FOR TESTING CODED

- 1 INPUT GROUP REFERENCE PLANE
- 2 PTO ADAPTER MOUNTING FACE
- 3 LEFT MOUNTING BRACKET FACE
- 4 RIGHT MOUNTING BRACKET FACE



SECTION A-A



EQUIPMENT SHOWN:  
- MGX-5202SC PER ASSEMBLY 1026316A  
- SAE #1 HOUSING  
- GP VALVE WITH EC050 CONTROL MODULE

FIRST USE ASSEMBLY: 1026316A  
FIRST USE MODEL: MGX-5202SC  
SIMILAR TO:  
WEIGHT: 669.16 kg  
SCALE: 1:3  
DRAWN BY: DJM  
CHECKED BY: JCS  
APPROVED BY: ALC

THIRD ANGLE PROJECTION  
UNLESS OTHERWISE SPECIFIED  
DIMENSIONS ARE IN INCHES  
X.XX X.XX X.XX  
ALL ANGULAR TOLERANCES ±1°  
GEOMETRIC TOLERANCES ±1°  
PER NAME: F4.00 MM

DATE: 09/15/2010  
SCALE: 1:3  
DRAWN BY: DJM  
CHECKED BY: JCS  
APPROVED BY: ALC  
SHEET: 1 OF 1  
REV: B

B ECNWF-75133 12/18/2015  
REV: CHANGE NO. DATE  
TWIN(DISC)  
RACINE, WI 53403 - USA  
1026322A  
INSTALLATION  
MGX-5202SC