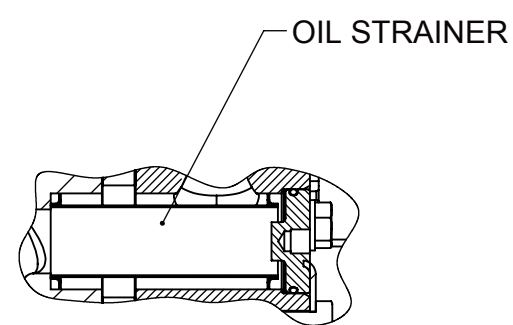


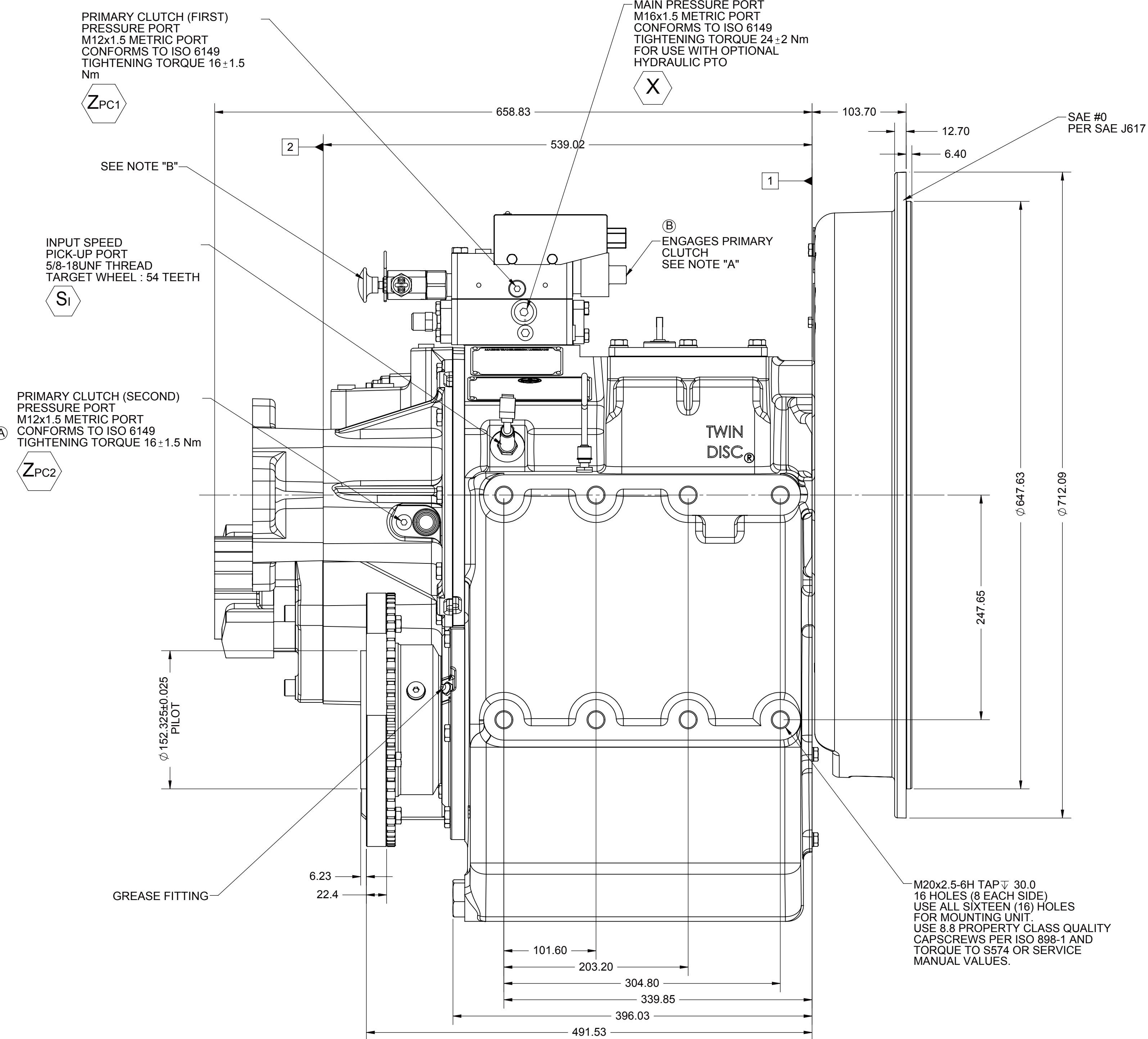
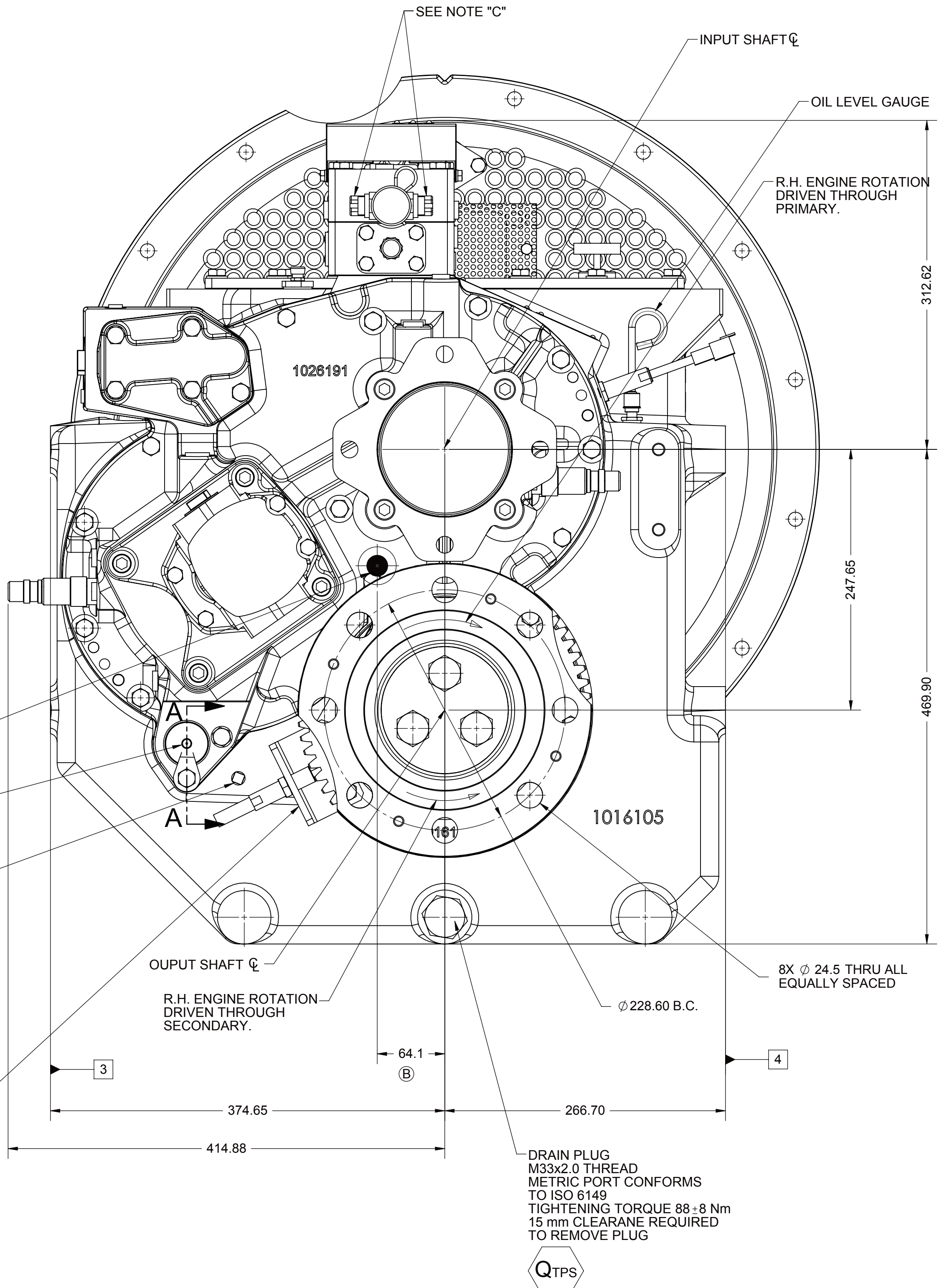
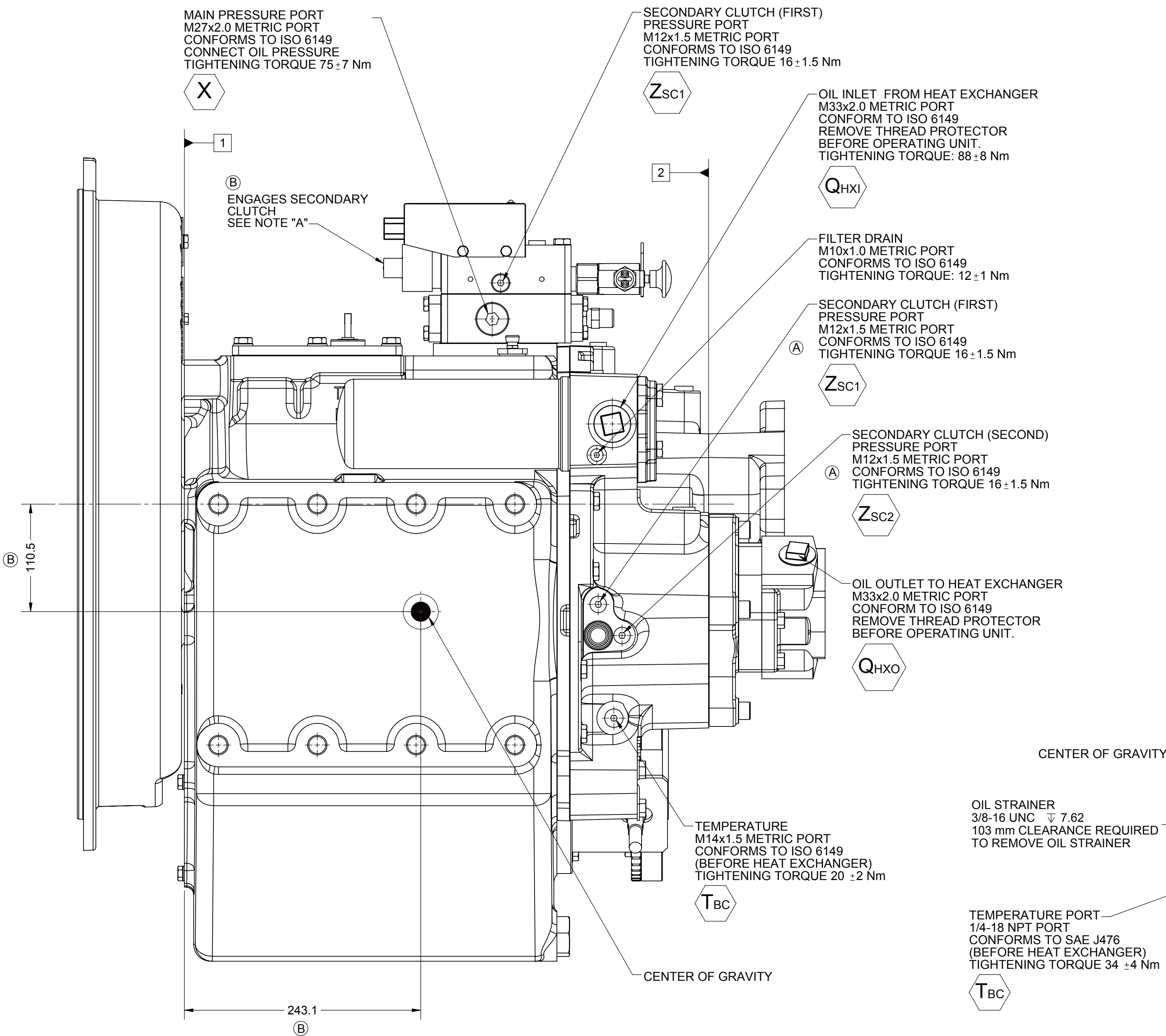
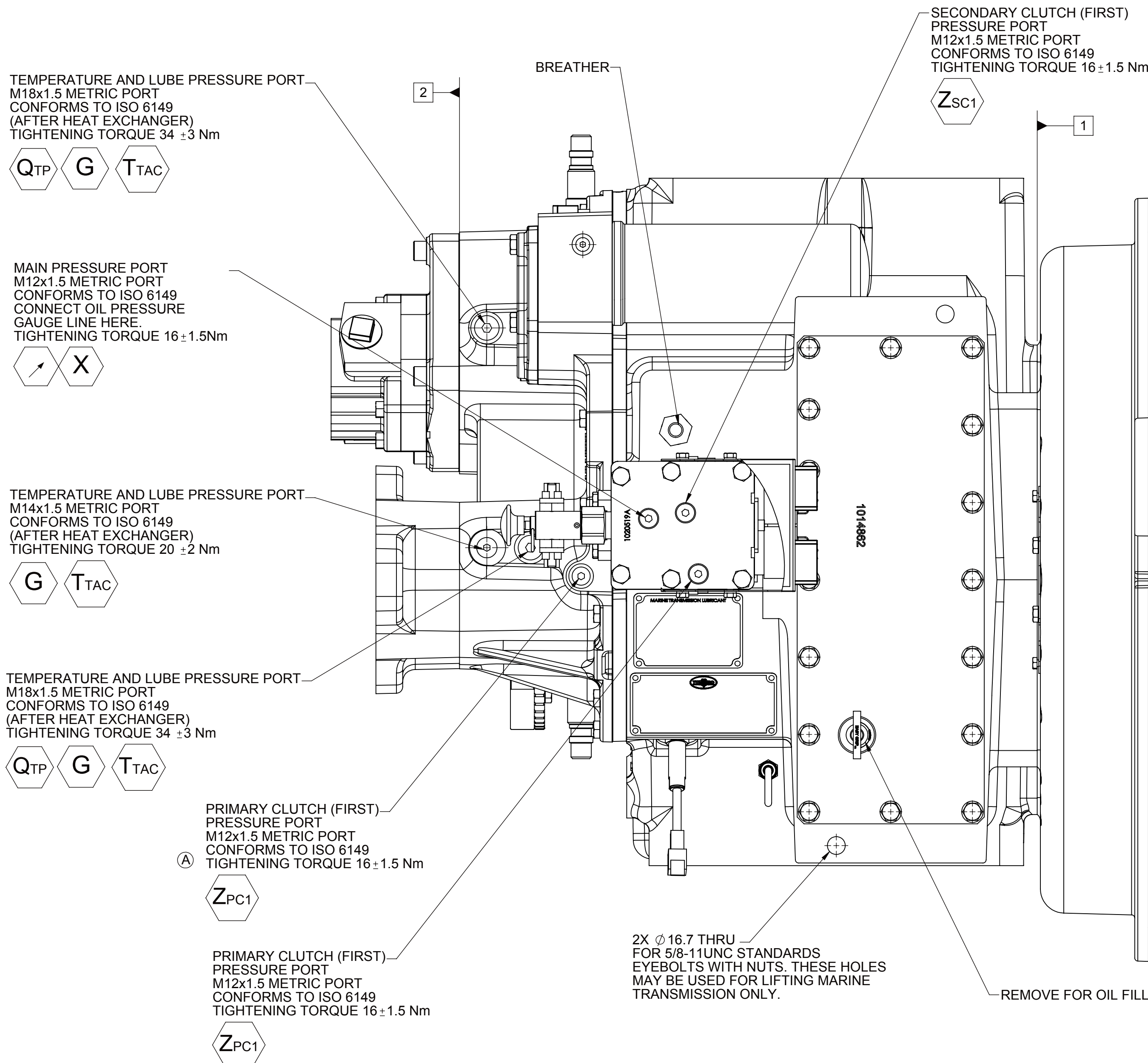
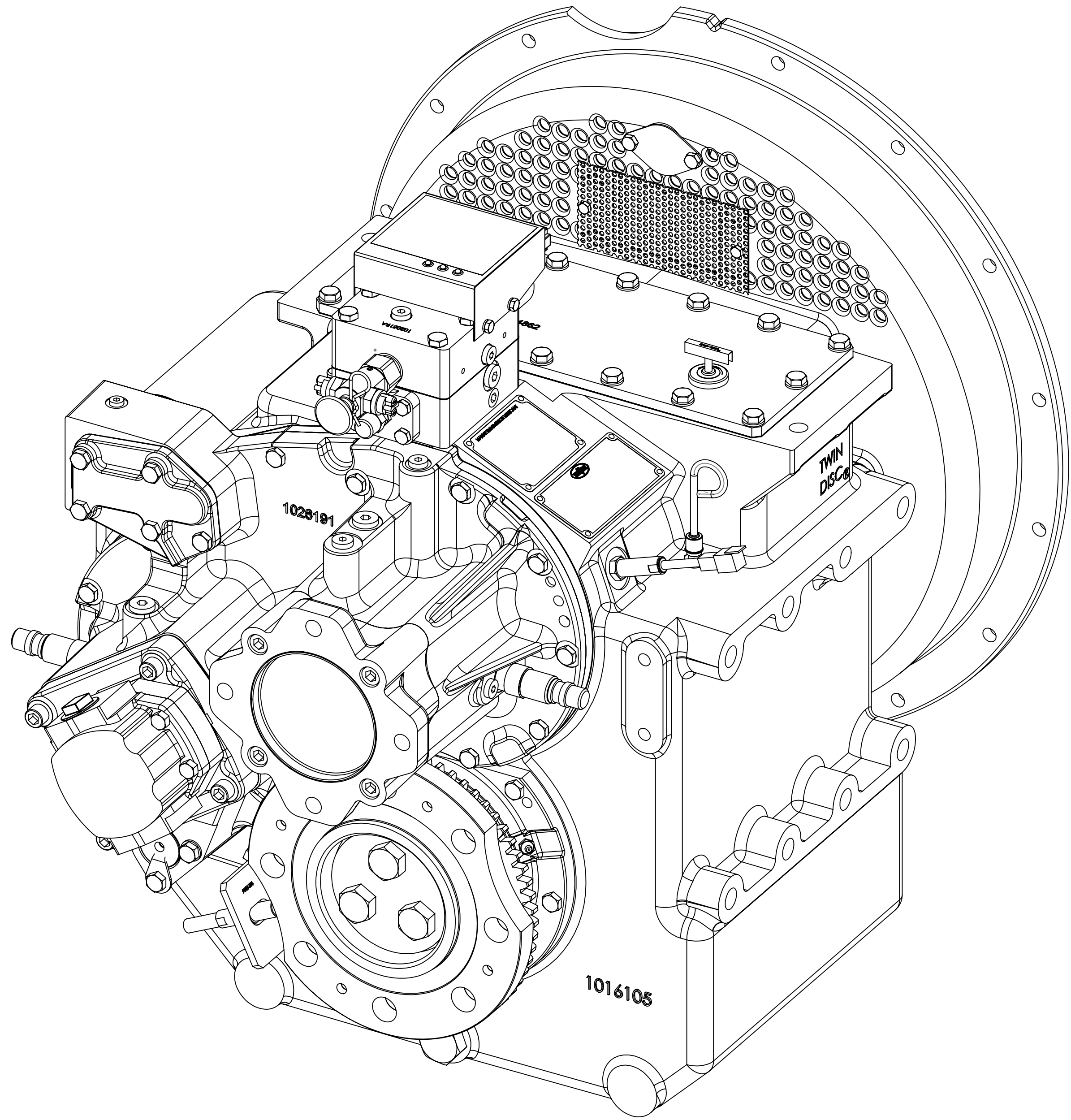
NOTES:

- A. **PROPORTIONAL CONTROL VALVE OPERATION**
1. WARNING DO NOT CONNECT VALVE COIL DIRECTLY TO BATTERY/POWER SUPPLY VOLTAGE.
2. OPERATION TO BE PERFORMED WITH ONLY TWIN DISC CONTROL SYSTEMS OR MODULES.
- B. **MANUAL DIRECTIONAL CONTROL VALVE OPERATION**
1. WITH MANUAL DIRECTIONAL CONTROL VALVE IN CENTERED POSITION, PUSH TO ENGAGE SECONDARY CLUTCH.
2. WITH MANUAL DIRECTIONAL CONTROL VALVE IN CENTERED POSITION, PULL TO ENGAGE PRIMARY CLUTCH.
- C. **MANUAL DIRECTIONAL CONTROL VALVE MODE SWITCH**
1. SWITCH IS NORMALLY CLOSED WHEN MANUAL DIRECTIONAL CONTROL VALVE IS IN THE CENTERED POSITION AND OPEN WHEN LEVER IS ACTUATED FROM CENTERED POSITION.
2. CURRENT = 20 AMP MAX.
3. FOR WIRING SCHEMATIC, REFER TO CONTROL MODULE DRAWING.
- D. REFERENCE S930 FOR TWIN DISC REQUIREMENTS FOR PRESSURE AND TEMPERATURE ALARM LEVELS.
- E. ALL POINTS AVAILABLE FOR TESTING CODED
- F. UNLESS OTHERWISE SPECIFIED FASTENER TORQUE VALUES AS PER S574 STANDARD

- 1 INPUT GROUP REFERENCE PLANE
2 PTO GROUP MOUNTING FACE
3 LEFT MOUNTING BRACKET FACE
4 RIGHT MOUNTING BRACKET FACE



SECTION A-A



EQUIPMENT SHOWN:

- MX-5202SC PER ASSEMBLY 1026316
- SAE #0 HOUSING
- GP VALVE WITH EC050 CONTROL MODULE
- 127-4, 32-4 LIVE PTO ADAPTER - 1017177

FIRST USE ASSEMBLY: 1026316 FIRST USE MODEL: MX-5202SC SIMILAR TO:		WEIGHT: 652 lb NET WT:	THIRD ANGLE PROJECTION	MATERIAL: RACINE, WI 53403 - USA	DATE: 05/07/2015
METRIC		UNLESS OTHERWISE SPECIFIED DIMENSIONS ARE IN INCHES	SCALE: 1-3	DRAWN BY: MG	CHECKED BY: NFG
NOTES: THIS PRINT CONTAINS PROPRIETARY INFORMATION AND IS NOT TO BE USED IN ANY MANNER WITHOUT THE WRITTEN PERMISSION OF TWIN DISC, INC. OR ITS SUBSIDIARIES. THIS PRINT IS THE PROPERTY OF TWIN DISC, INC. AND IS NOT TO BE REPRODUCED OR TRANSMITTED IN ANY FORM OR BY ANY MEANS, ELECTRONIC OR MECHANICAL, INCLUDING PHOTOCOPYING, RECORDING, OR BY ANY INFORMATION STORAGE AND RETRIEVAL SYSTEM.		DESCRIPTION: INSTALLATION MX-5202SC		SHEET: 1 OF 1	
APPROVED BY: NFG		DATE: 05/07/2015		REV: 1	

1026322C

TWIN DISC