


- 1 INPUT GROUP REFERENCE PLANE
- 2 PTO GROUP MOUNTING FACE
- 3 LEFT MOUNTING BRACKET FACE
- 4 RIGHT MOUNTING BRACKET FACE
- 5 LIVE PTO PUMP MOUNTING FACE

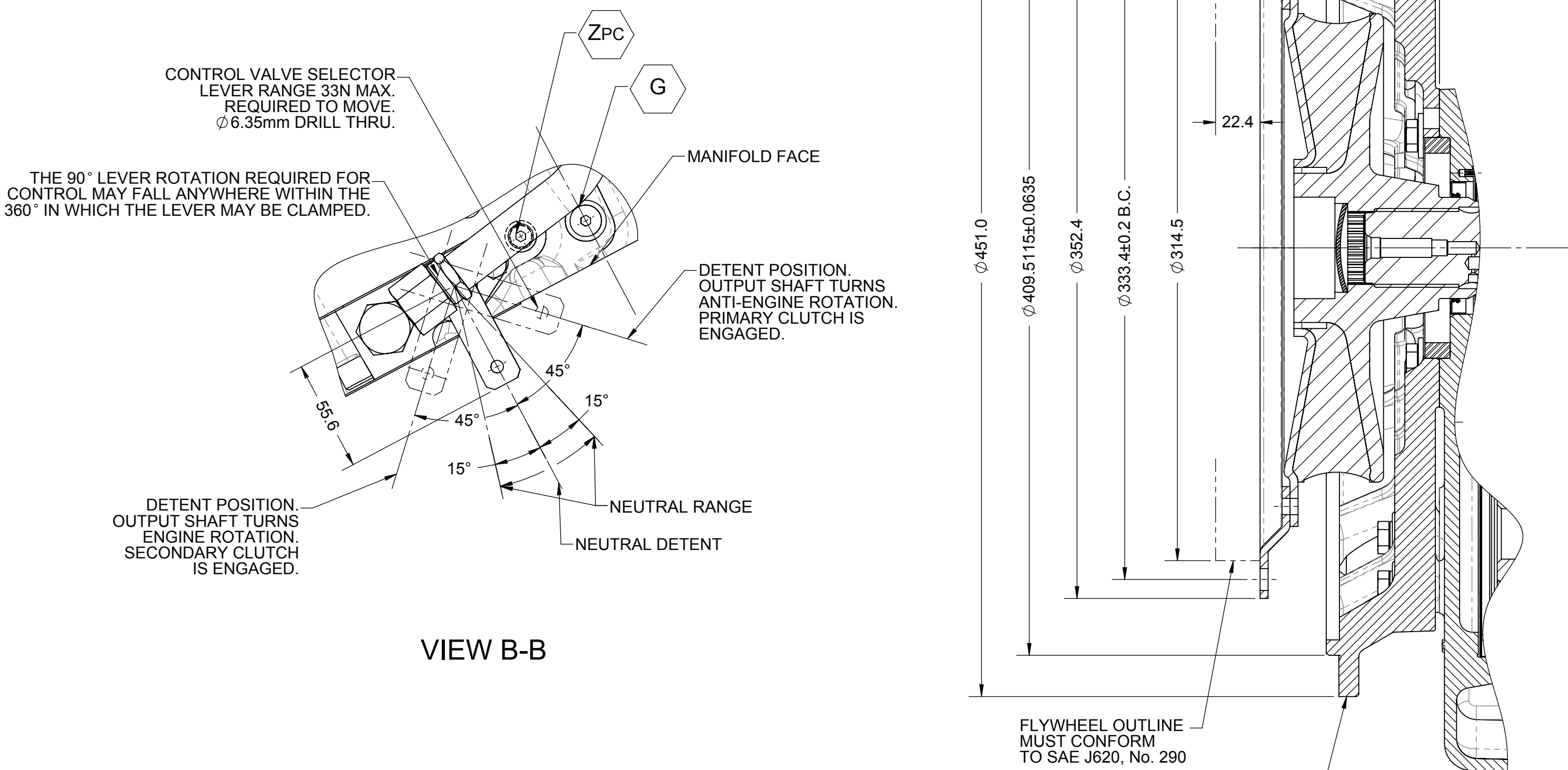
NOTES:

- A. REFERENCE S930 FOR TWIN DISC REQUIREMENTS FOR PRESSURE AND TEMPERATURE ALARM LEVELS.
- B. UNLESS OTHERWISE SPECIFIED FASTENER TORQUE VALUES AS PER S574 STANDARD.
- C. ALL POINTS AVAILABLE FOR TESTING CODED 

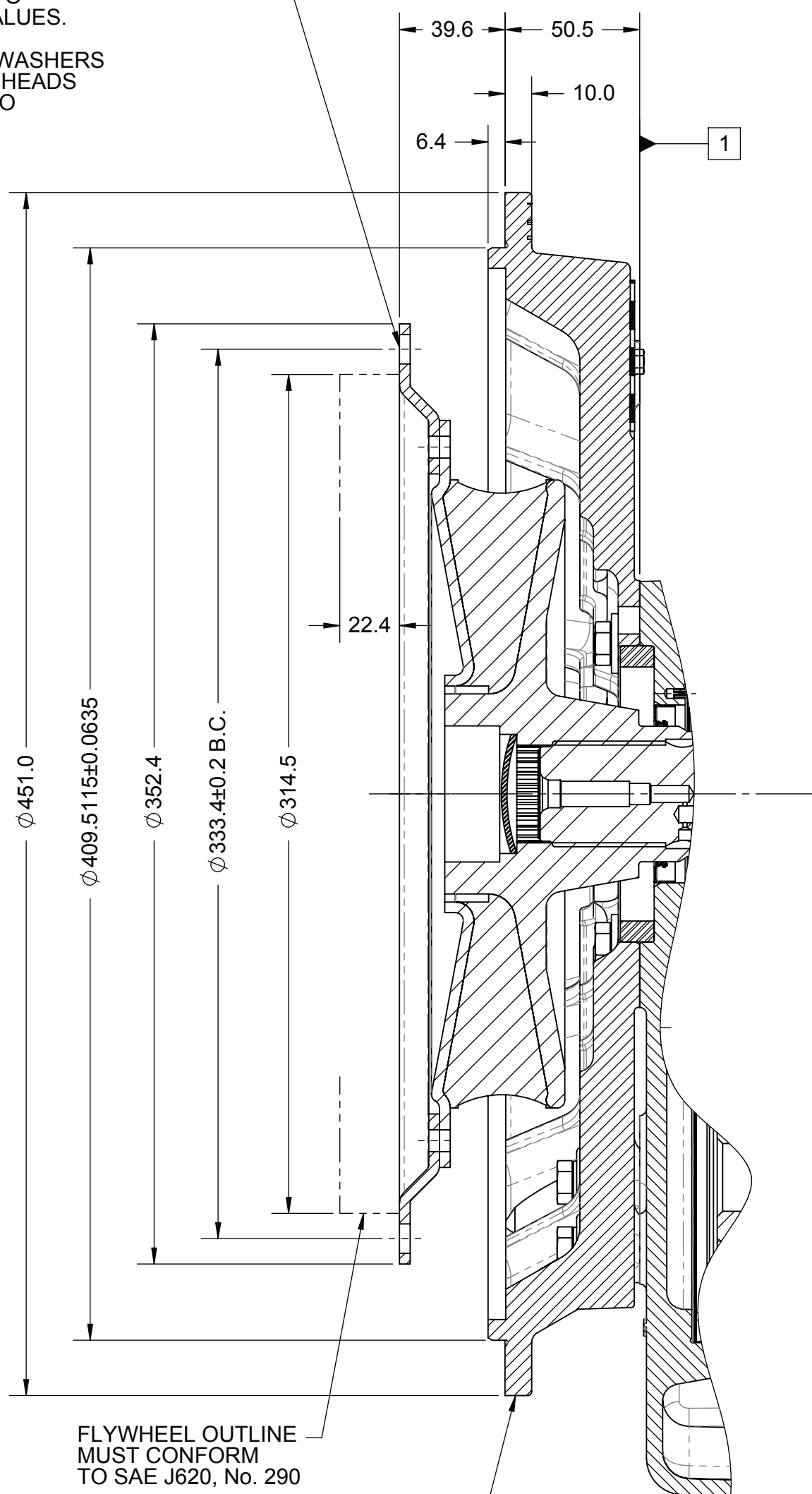
Ø11.0±0.2 DRILL THRU, 8 HOLES EQUALLY SPACED.
USE GRADE 5 QUALITY CAPSCREWS
PER SAE J 429 AND TORQUE TO
S574 OR SERVICE MANUAL VALUES.

USE HARDENED FLAT STEEL WASHERS
R 30N:61 MIN. UNDER SCREW HEADS
GRADE 5 MIN. AND TORQUE TO
S574 VALUES.

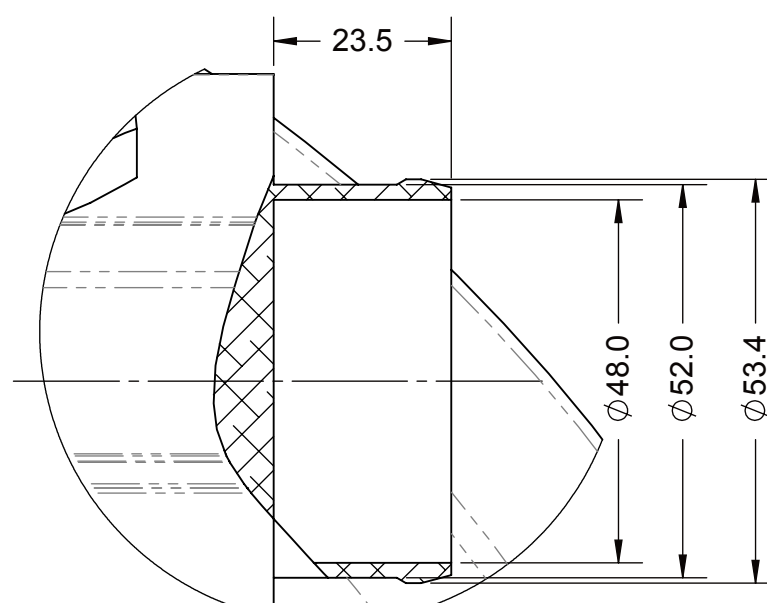
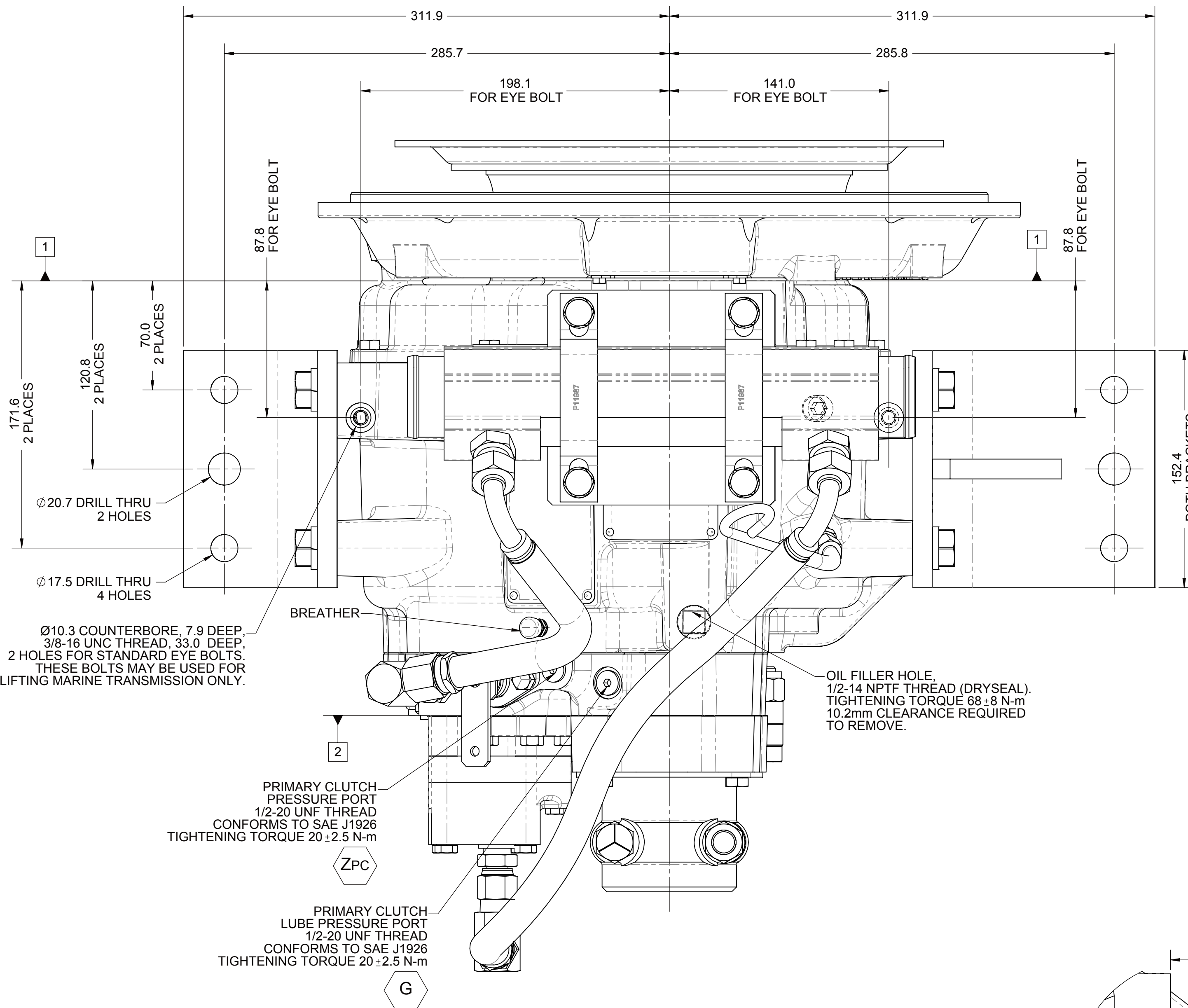
USE HARDENED FLAT STEEL WASHERS
R 30N:61 MIN. UNDER SCREW HEADS
GRADE 5 MIN. AND TORQUE TO
S574 VALUES.



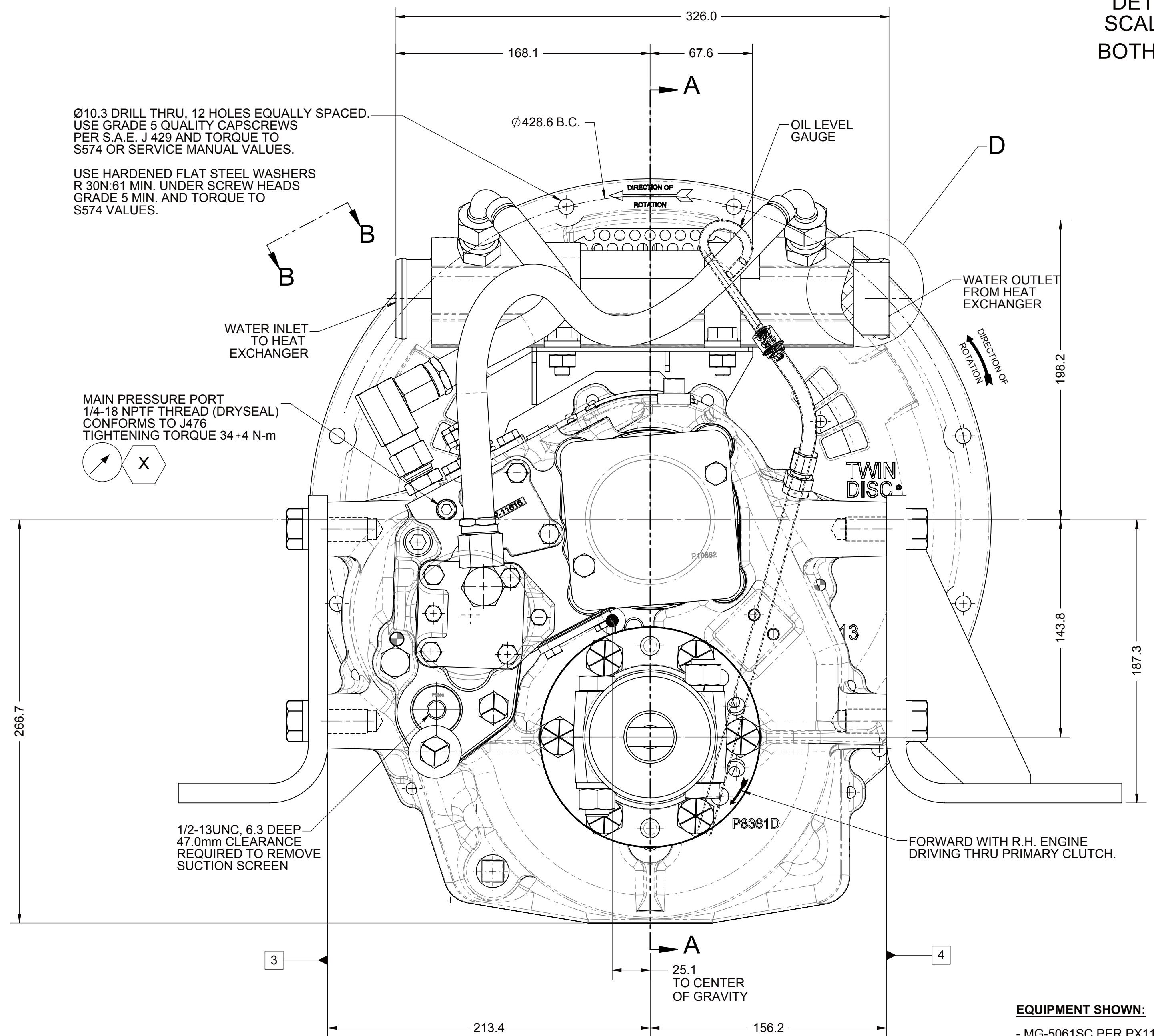
VIEW B-B



SECTION A-A



DETAIL D
SCALE 1 : 1
BOTH SIDES



EQUIPMENT SHOWN:

- MG-5061SC PER PX11650 ASSEMBLY
- SAE#3 HOUSING
- SAE 290 VULKAN VKE-3210 SERIES COUPLING
- MECHANICAL CONTROL VALVE
- PM11990 MOUNTED HEAT EXCHANGER
- PX8649A COMPANION FLANGE ASSEMBLY
- SAEJ744 82-2, 16-4 LIVE PTO GROUP
- 1016428R MOUNTING BRACKETS

