

- 1 INPUT GROUP REFERENCE PLANE
- 2 PTO GROUP MOUNTING FACE
- 3 LEFT MOUNTING BRACKET FACE
- 4 RIGHT MOUNTING BRACKET FACE

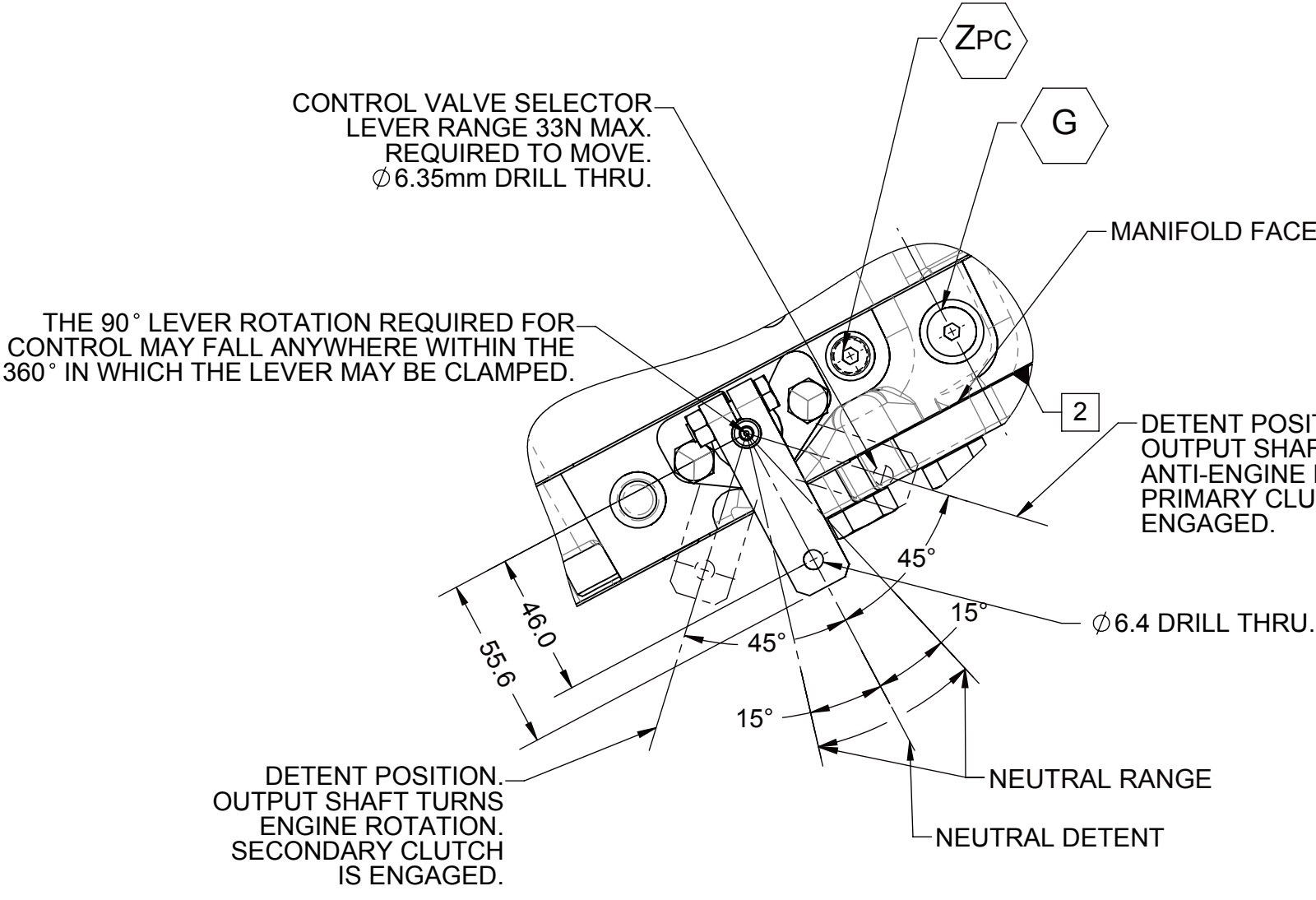
NOTES:

A. REFERENCE S930 FOR TWIN DISC REQUIREMENTS FOR PRESSURE AND TEMPERATURE ALARM LEVELS.

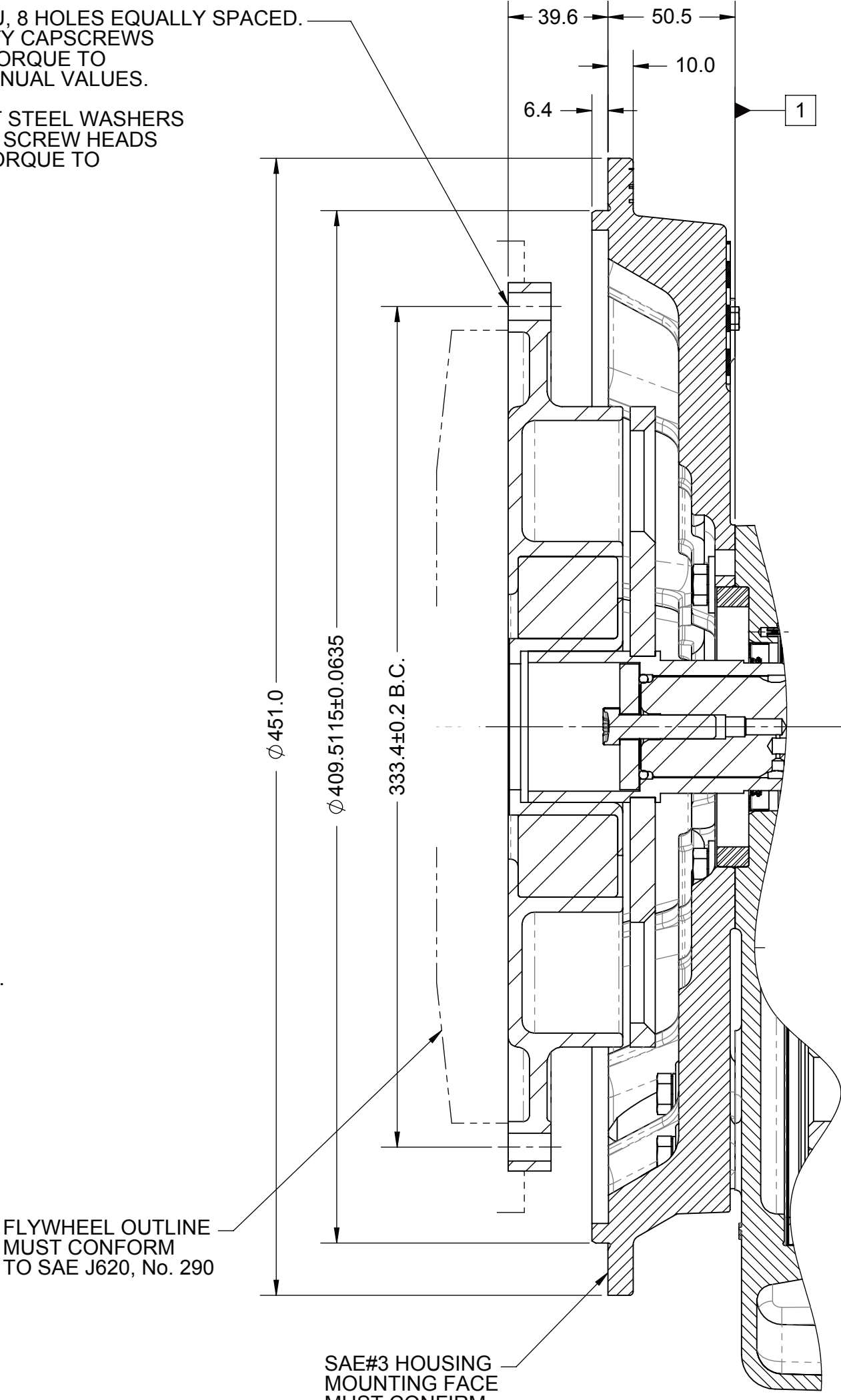
B. UNLESS OTHERWISE SPECIFIED FASTENER TORQUE VALUES AS PER S574 STANDARD.

C. ALL POINTS AVAILABLE FOR TESTING CODED

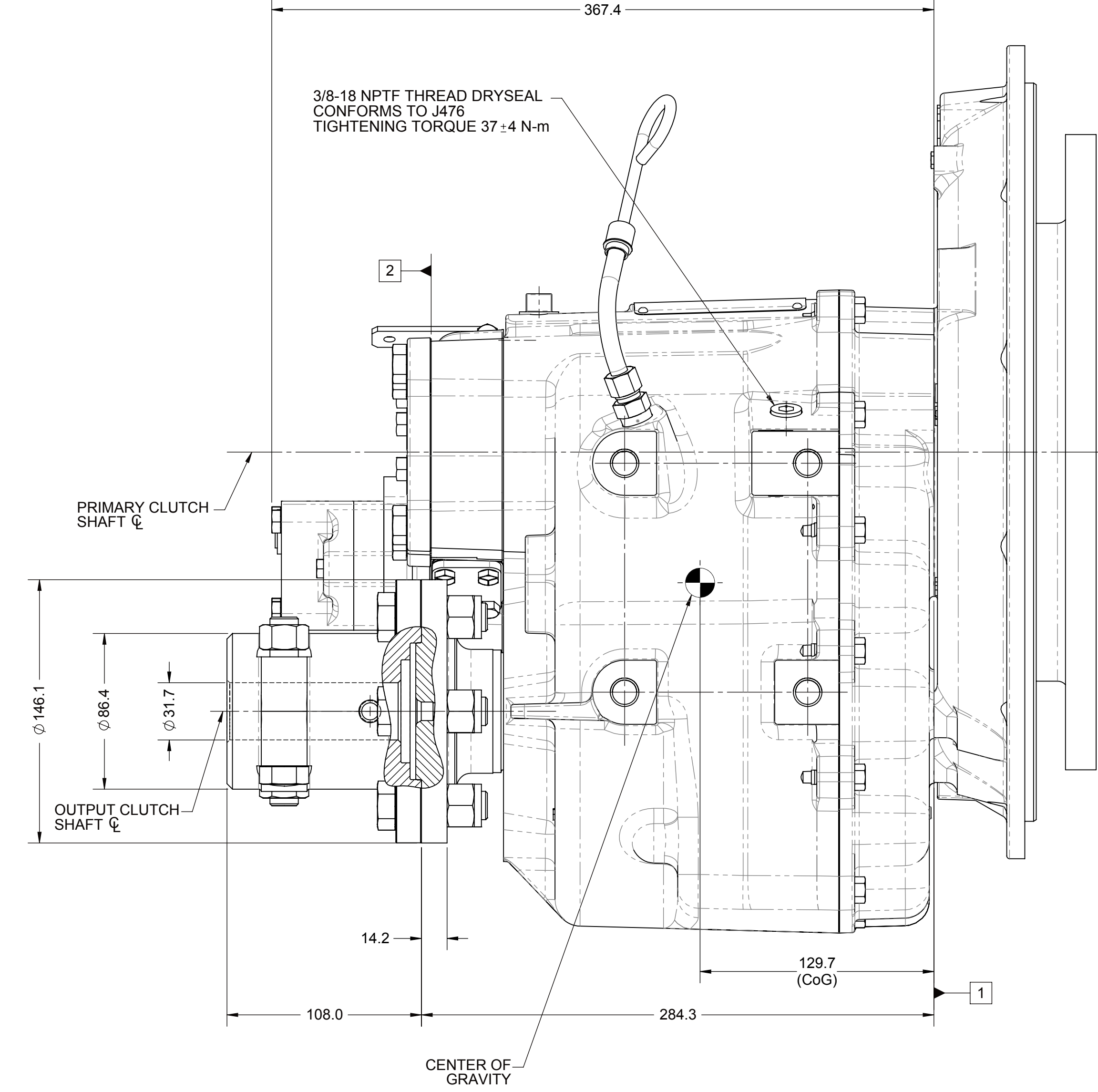
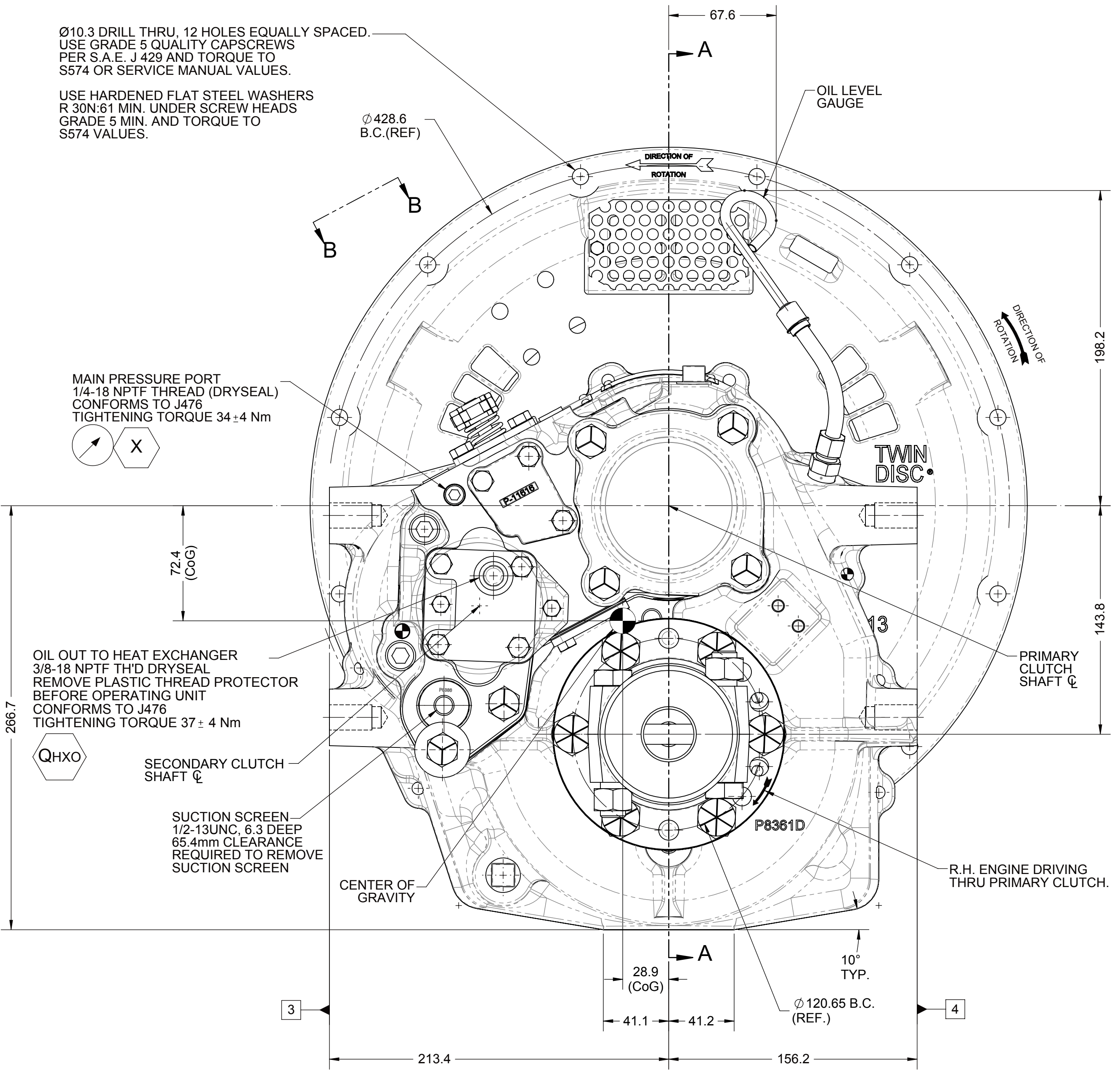
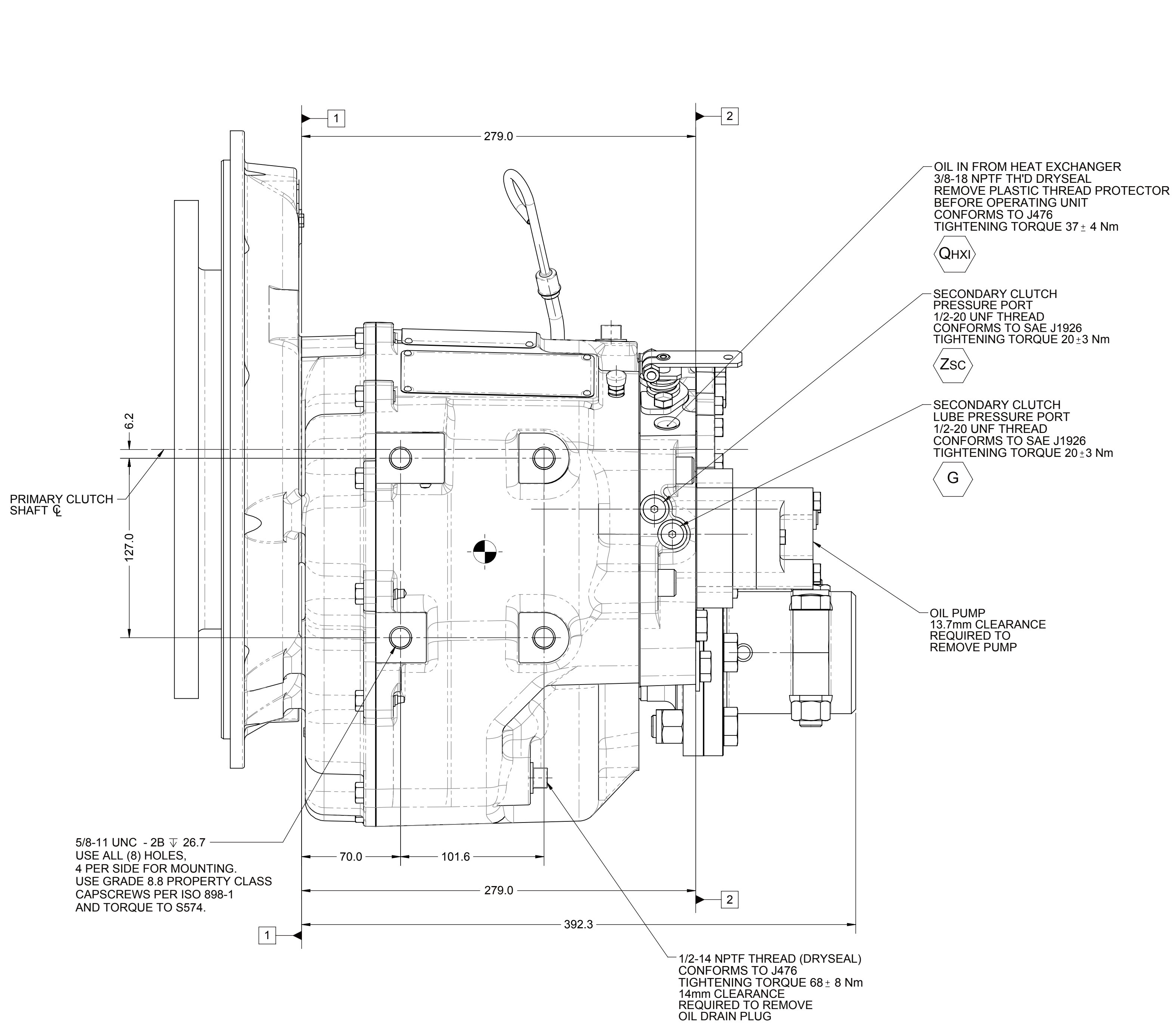
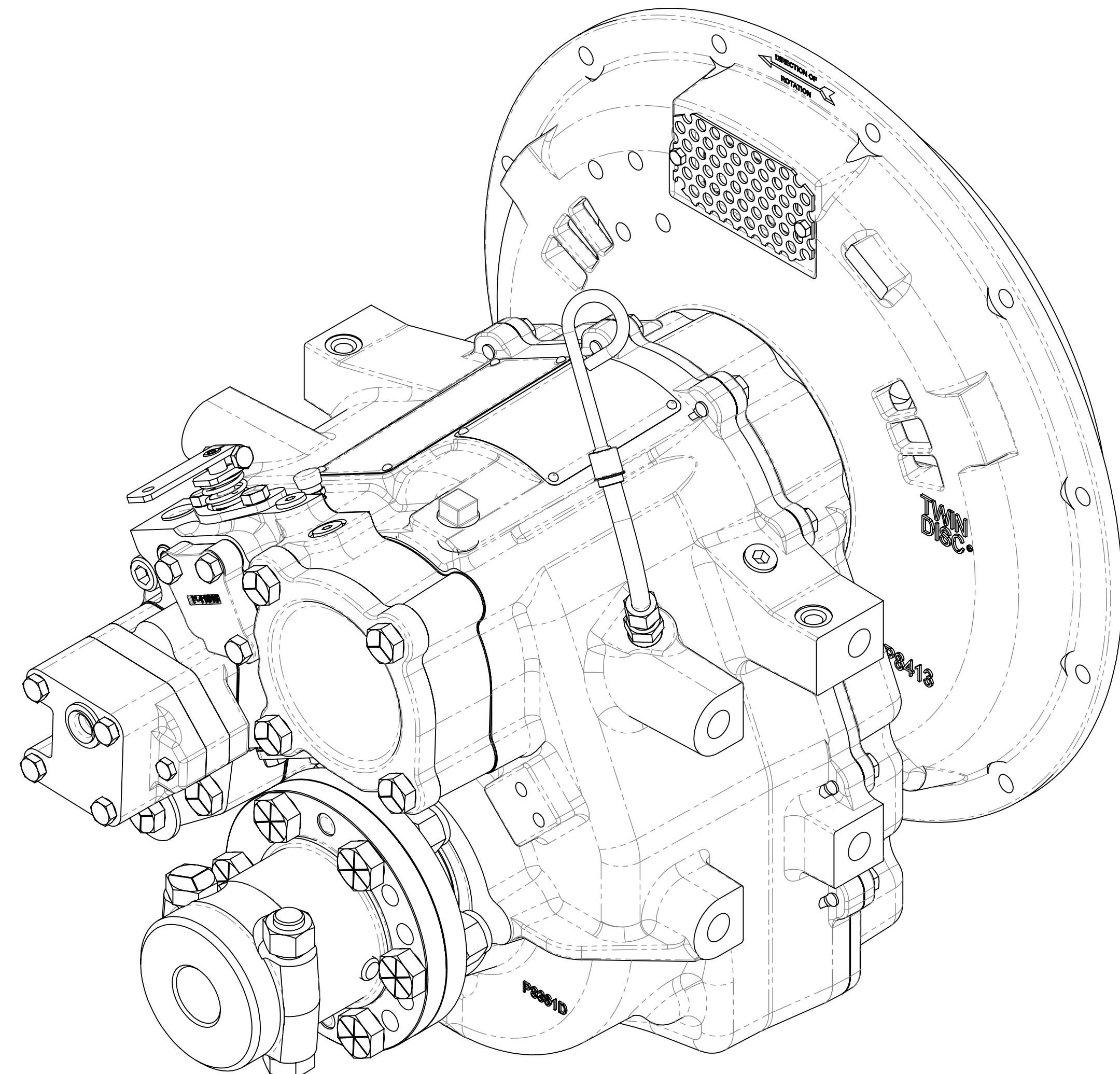
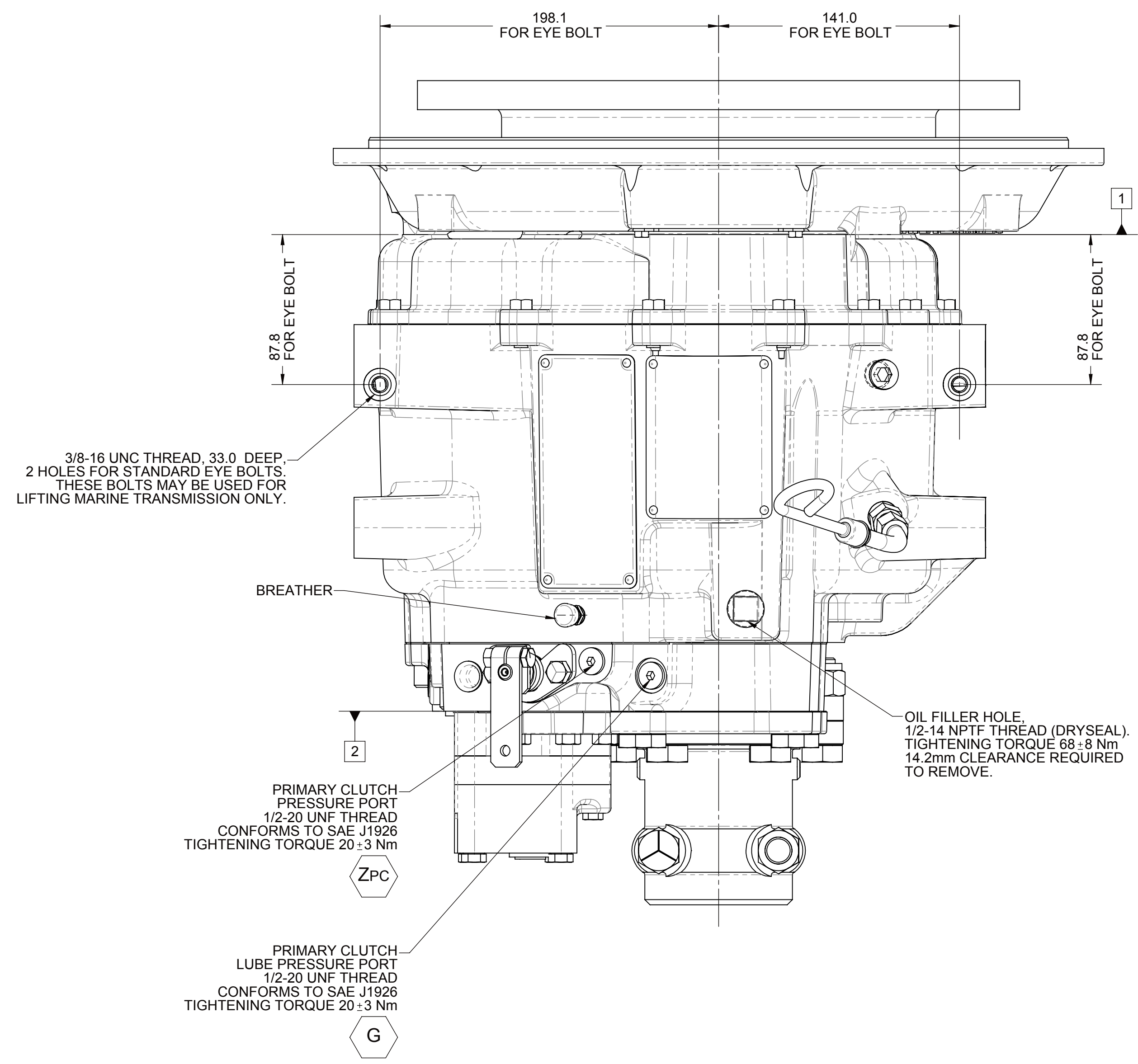
Ø11.0x0.2 DRILL THRU, 8 HOLES EQUALLY SPACED.
USE GRADE 5 QUALITY CAPSCREWS
PER SAE J 429 AND TORQUE TO
S574 OR SERVICE MANUAL VALUES.
USE HARDENED FLAT STEEL WASHERS
R 30N/61 MIN. UNDER SCREW HEADS
GRADE 5 MIN. AND TORQUE TO
S574 VALUES.



VIEW B-B





SECTION A-A



EQUIPMENT SHOWN:

- MG-5061SC PER PX11650 ASSEMBLY
- SAE#3 HOUSING
- SAE 290 CENTA CF-DS-40 COUPLING
- MECHANICAL CONTROL VALVE
- LESS HEAT EXCHANGER AND LESS PTO
- WITH COMPANION FLANGE ASSEMBLY

FIRST USE ASSEMBLY: FIRST USE MODEL: SIMILAR TO: 1026328C		WEIGHT: 111lb		THIRD ANGLE PROJECTION	MATERIAL:	DATE: 06/02/2017 TWE: 12		RACINE, WI 53403 - USA
METRIC NOTES: THIS PRINT CONTAINS PROPRIETARY INFORMATION AND IS NOT TO BE USED IN ANY MANNER WITHOUT THE WRITTEN CONSENT OF METRIC TWIN DISC, INCORPORATED		UNLESS OTHERWISE SPECIFIED DIMENSIONS ARE IN INCHES ALL ANGLES TO DIMENSIONS PER ASME Y14.5M 1994		HEAT TREAT:	DRAWING BY: JMF	1026328F		
DESCRIPTION:		INSTALLATION		MG-5061SC	CHECKED BY: JMF		DWG SIZE: A0	SHEET: 1 OF 1
					APPROVED BY: JMF			