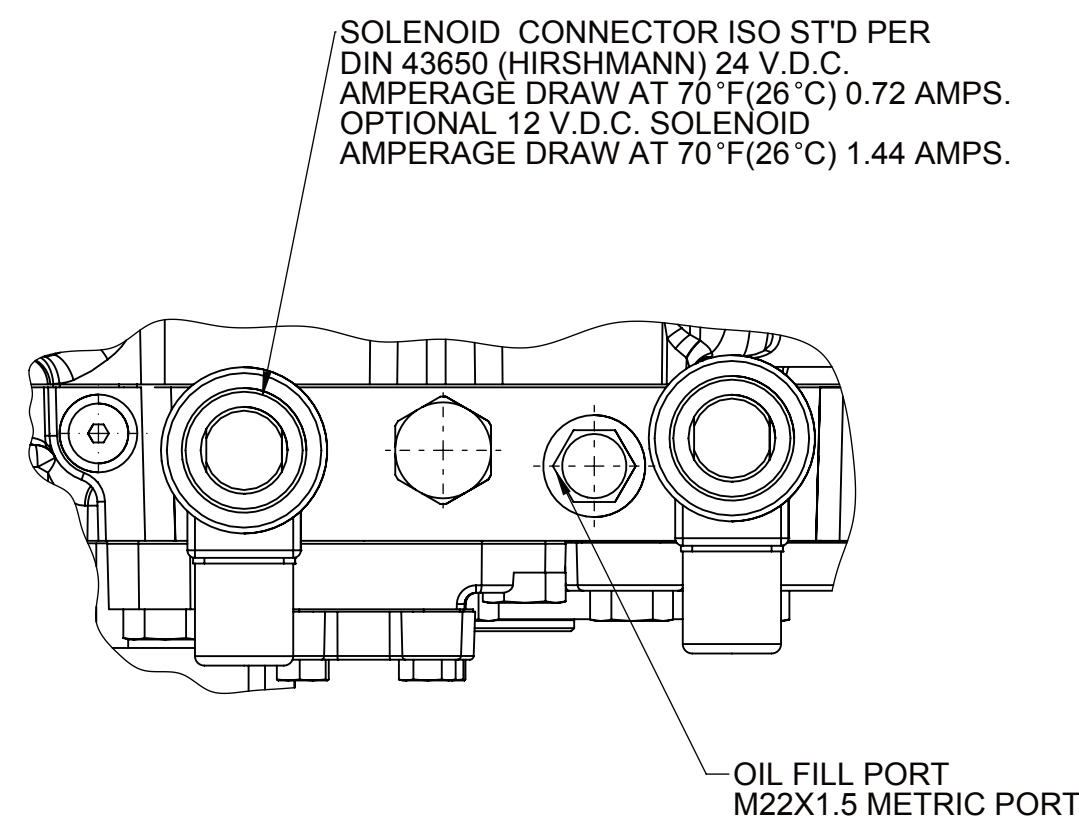


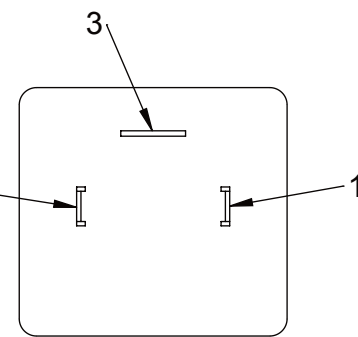
- 1 INPUT GROUP REFERENCE PLANE
- 2 PTO ADAPTER MOUNTING FACE
- 3 LEFT MOUNTING BRACKET FACE
- 4 RIGHT MOUNTING BRACKET FACE



VIEW A-A

WIRING DIAGRAM:

TERMINAL 1 :+ VDC
TERMINAL 2 :0 VDC
TERMINAL 3 :GROUND



NOTES:

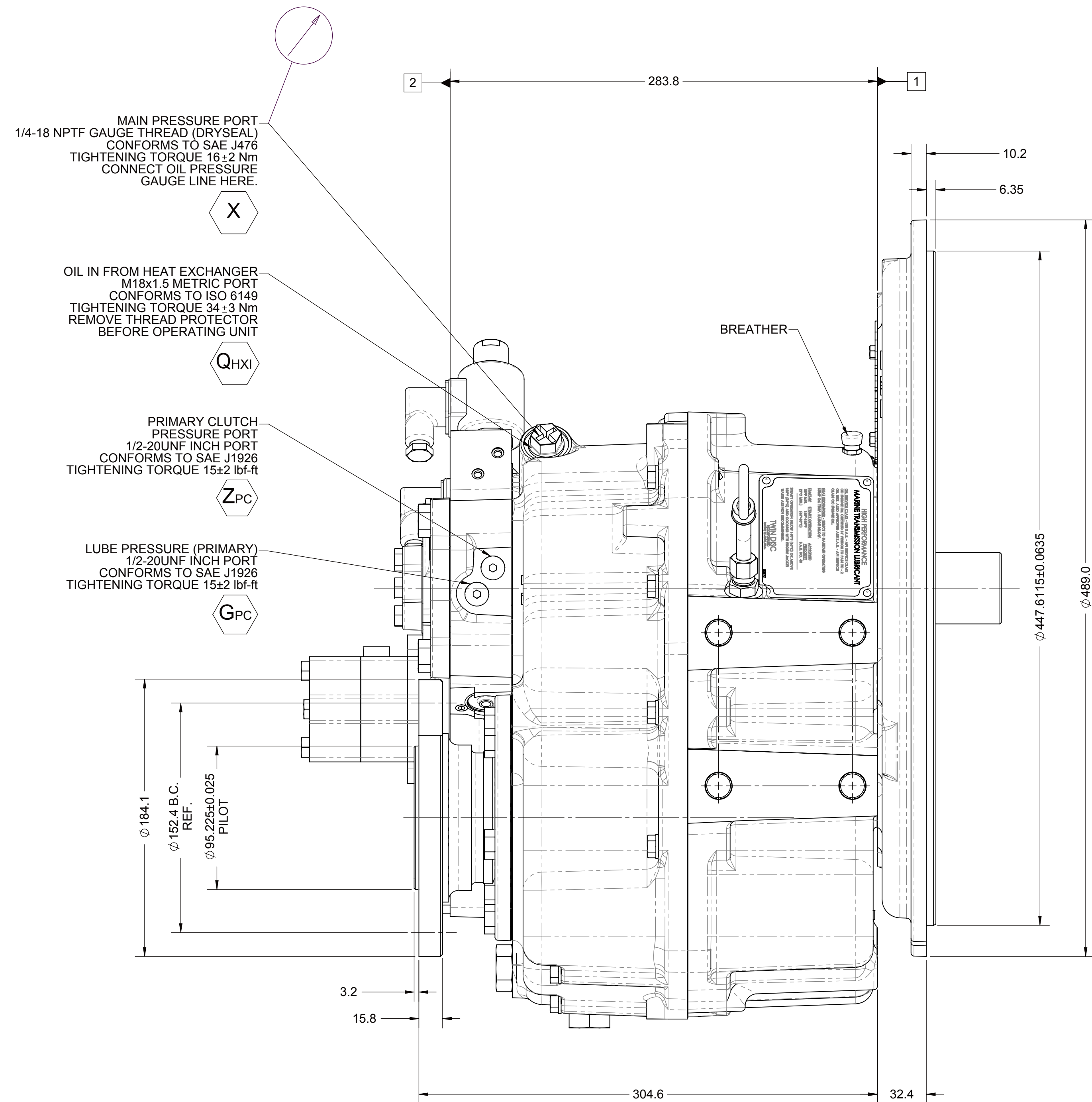
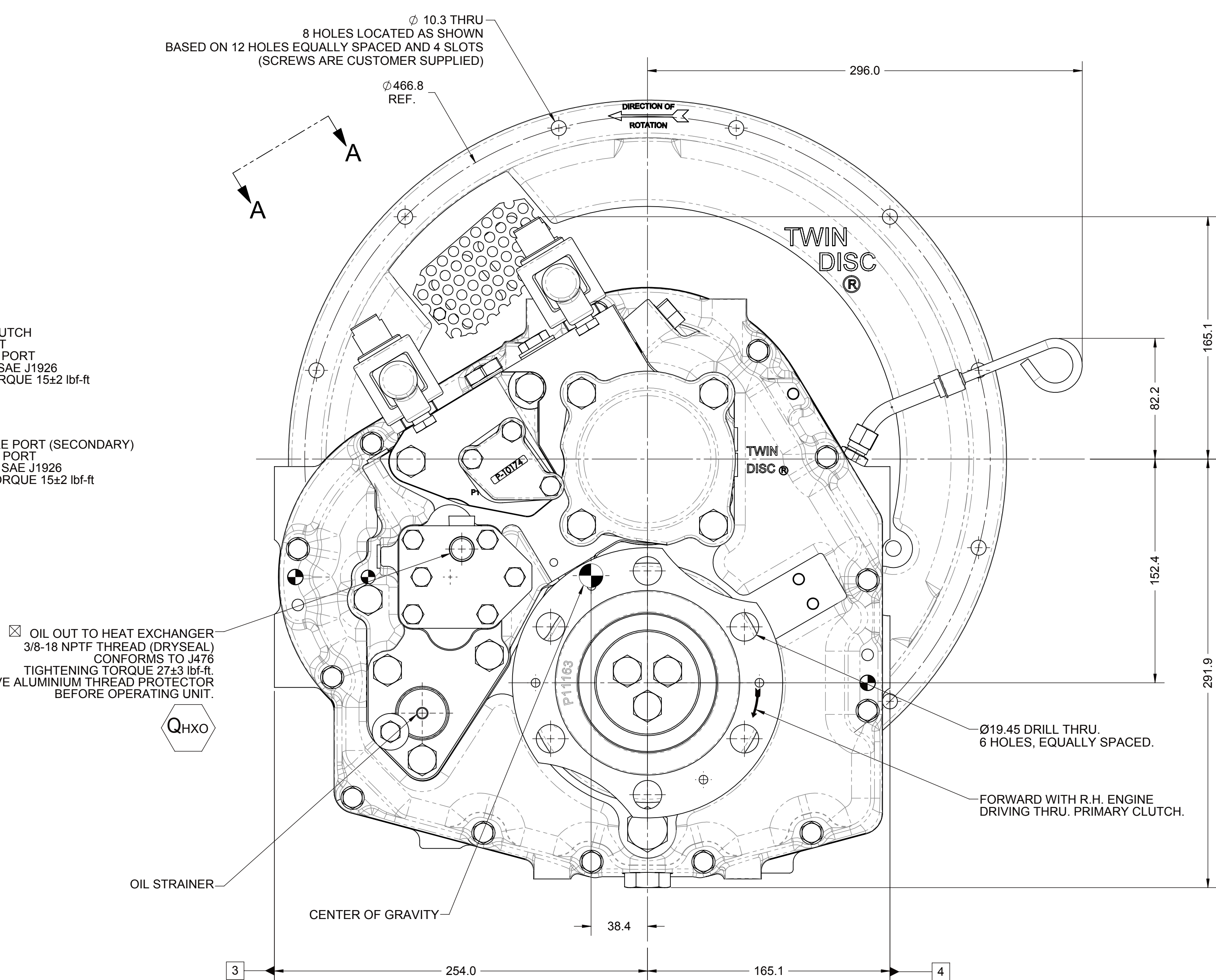
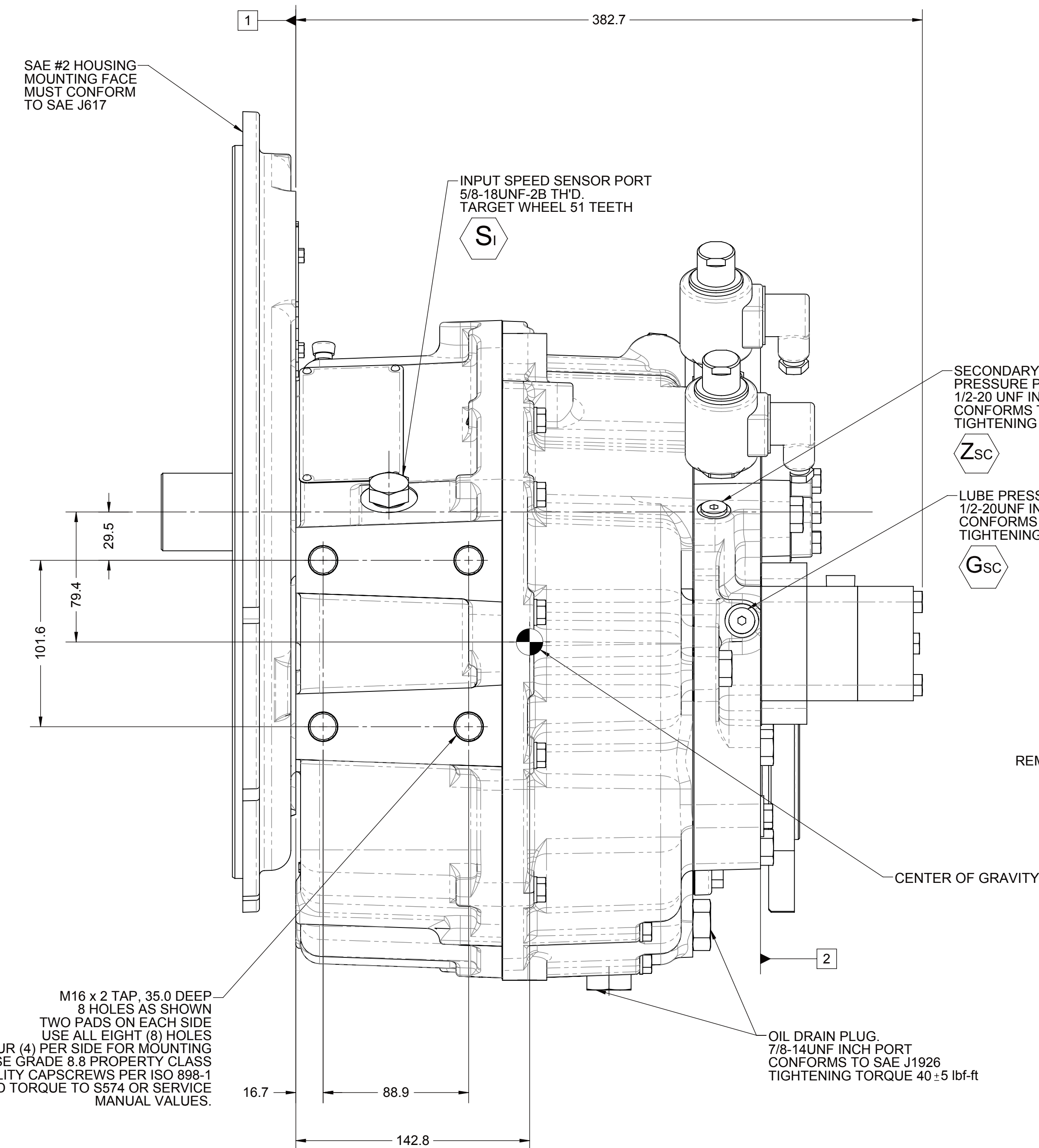
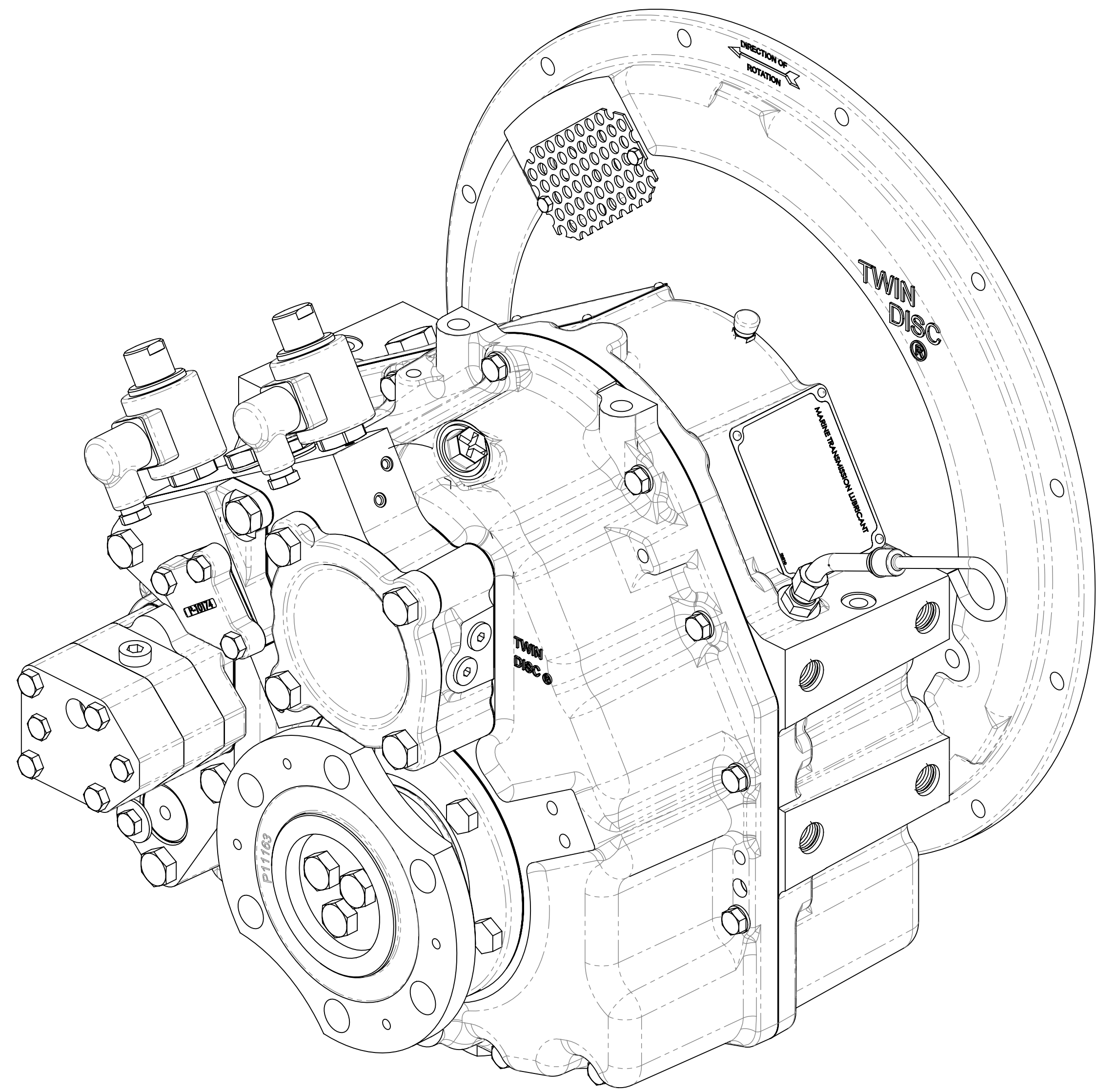
- A. MANUAL OVERRIDE VALVE OPERATION
1. THE MANUAL OVERRIDE FEATURE FOR THE PRIMARY AND SECONDARY SOLENOIDS MUST NEVER BE ENGAGED SIMULTANEOUSLY.
 2. THE MANUAL OVERRIDE BUTTON FOR BOTH THE PRIMARY AND SECONDARY SOLENOIDS MUST BE IN THE NEUTRAL POSITION TO OPERATE EITHER SOLENOID ELECTRICALLY.
 3. TO ENGAGE PRIMARY CLUTCH USING THE MANUFAL OVERRIDE
 - a. REMOVE PROTECTIVE CAP FROM THE PRIMARY SOLENOID
 - b. PUSH BUTTON DOWN
 - c. CONTINUE TO PUSH BUTTON AND ROTATE CLOCKWISE 180°
 - d. RELEASE BUTTON
 4. TO ENGAGE SECONDARY CLUTCH USING THE MANUFAL OVERRIDE
 - a. REMOVE PROTECTIVE CAP FROM THE SECONDARY SOLENOID
 - b. PUSH BUTTON DOWN
 - c. CONTINUE TO PUSH BUTTON AND ROTATE CLOCKWISE 180°
 - d. RELEASE BUTTON
 5. TO RETURN EITHER OF THE PRIMARY OR SECONDARY MANUAL OVERRIDE TO THE NEUTRAL POSITION:
 - a. PUSH BUTTON DOWN
 - b. CONTINUE TO PUSH BUTTON AND ROTATE COUNTER-CLOCKWISE 180°
 - c. RELEASE BUTTON
 - d. INSTALL PROTECTIVE CAP OVER THE MANUAL OVERRIDE BUTTON
- B. REFERENCE S930 FOR TWIN DISC REQUIREMENTS FOR PRESSURE AND TEMPERATURE ALARM LEVELS.

- ☒ OPTIONAL TEMPERATURE INDICATING SWITCH:
CUSTOMER TO INSTALL IN A PIPE TEE IN THE HYDRAULIC LINE LEADING FROM THE MARINE TRANSMISSION PUMP TO THE HEAT EXCHANGER INLET. REFER TO HYDRAULIC DIAGRAM.



M10 x 1.5 TAP, 21.0 DEEP, 2 HOLES FOR STANDARD EYE BOLTS. THESE BOLTS MAY BE USED FOR LIFTING MARINE TRANSMISSION ONLY.

SECONDARY CLUTCH SOLENOID-SEE NOTE A

PRIMARY CLUTCH SOLENOID-SEE NOTE A



EQUIPMENT SHOWN:
- MG-506SSC PER PX11480 SERIES
- ELECTRIC CONTROL VALVE LESS MECHANICAL TROLLING VALVE
- SAE #2 HOUSING ADAPTER

FIRST USE ASSEMBLY: FIRST USE MODEL: MG-506SSC SIMILAR TO: 1026372A	WEIGHT: 106.07 kg 117.0 lb		MATERIAL: HEAT TREAT:	DATE: 03/23/2017	
METRIC		UNLESS OTHERWISE SPECIFIED NOMINAL DIMENSIONS ARE IN MILLIMETERS (INCHES) G X .0005 (1/16 IN.)	DESCRIPTION: ALUMINUM T635105 K X .0005 (1/16 IN.) X .0005 (1/		