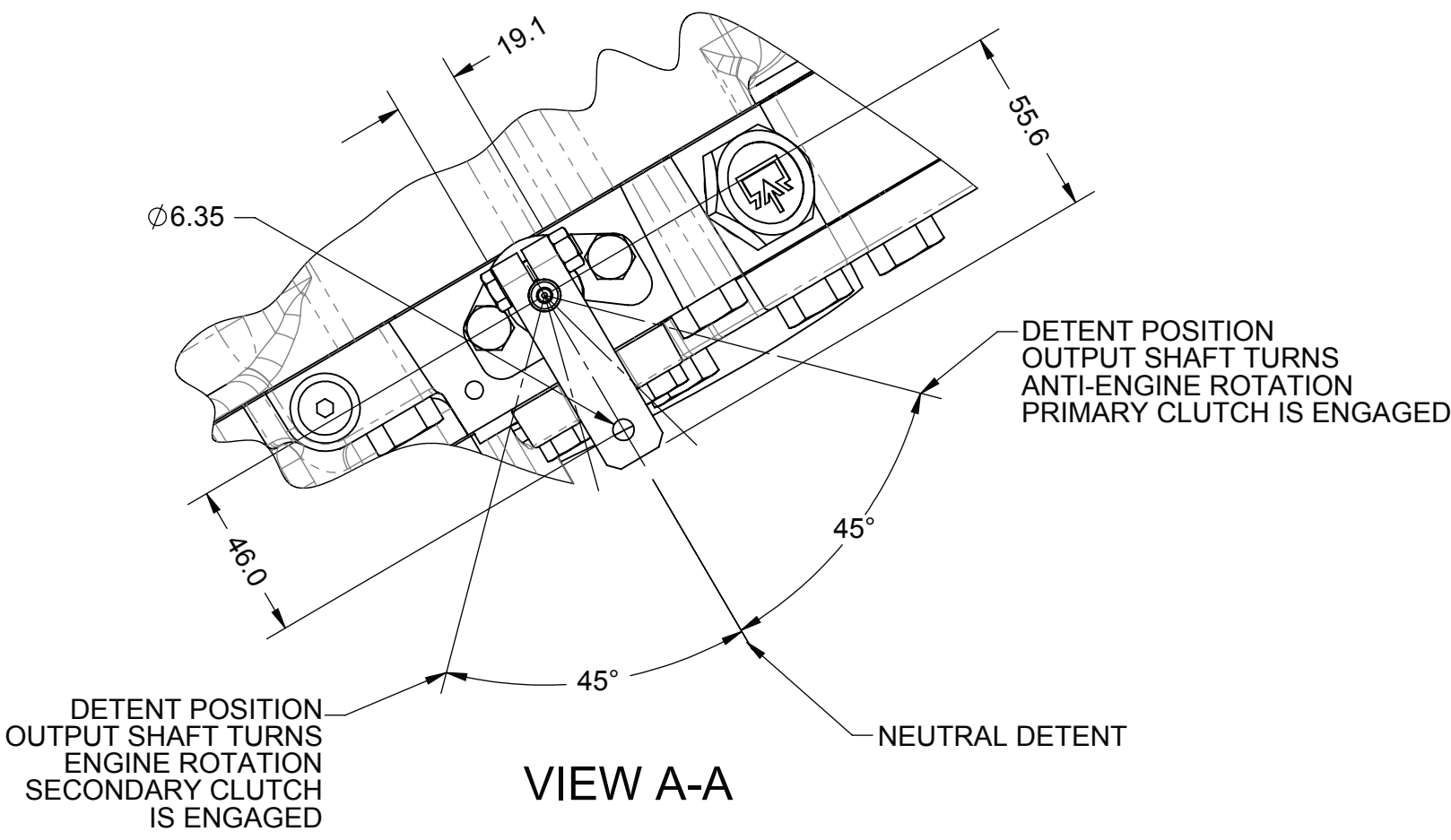


NOTE:

- THE 90° LEVER ROTATION REQUIRED FOR CONTROL MAY FALL ANYWHERE WITHIN THE 360° IN WHICH THE LEVER MAY BE CLAMPED.

- FORCE REQUIRED TO MOVE CONTROL VALVE SELECTOR LEVER 33 N MAX.

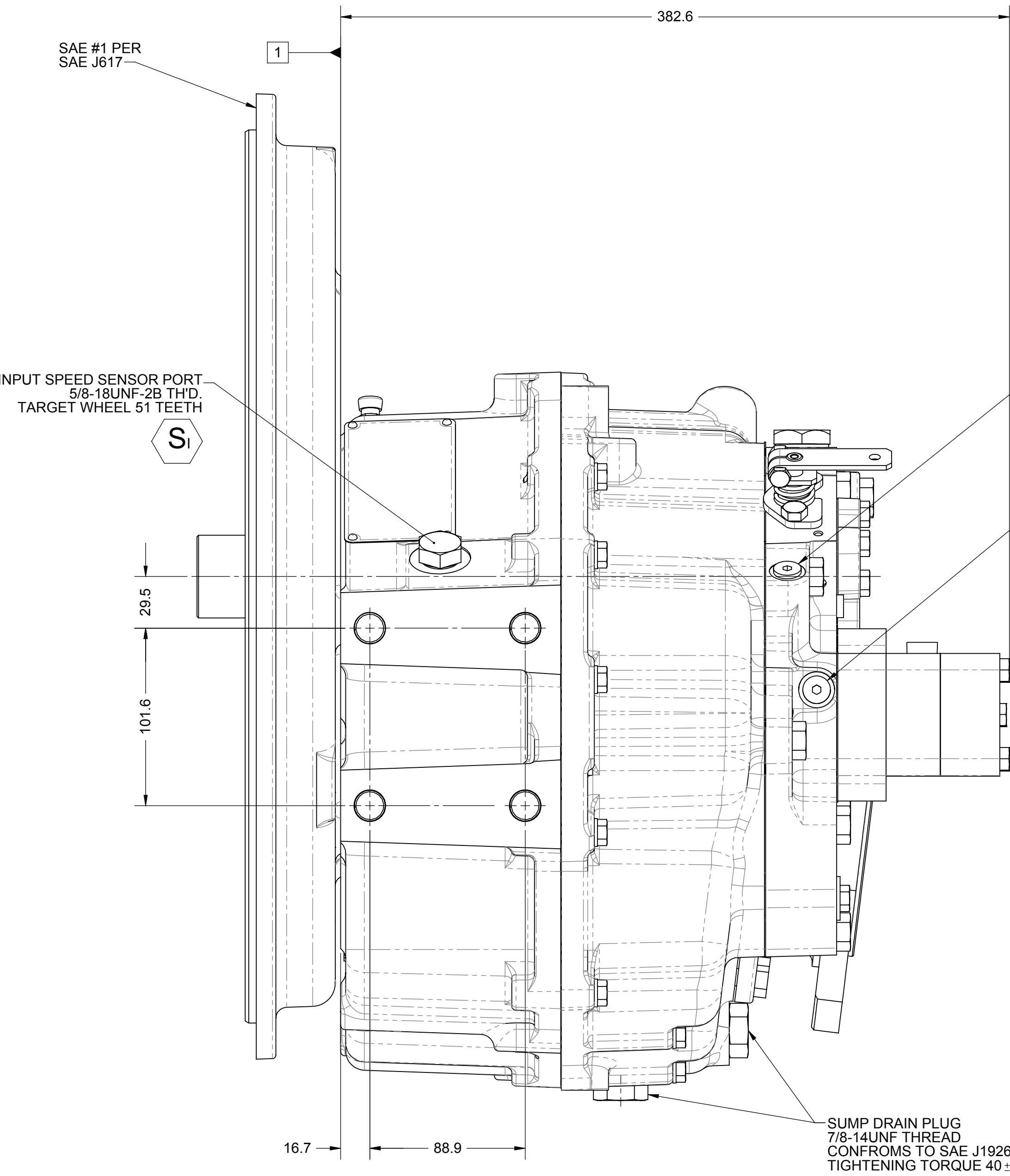
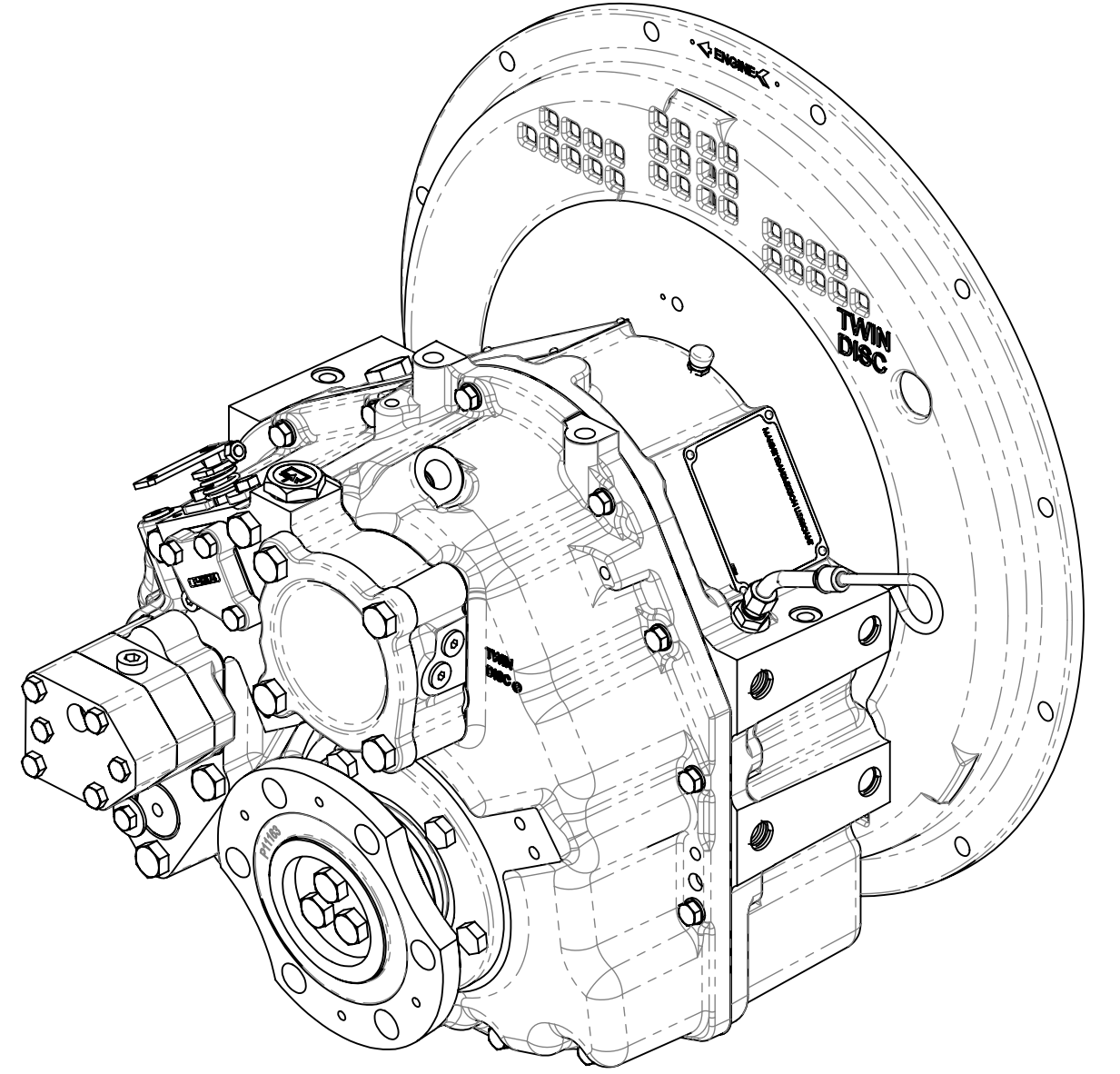
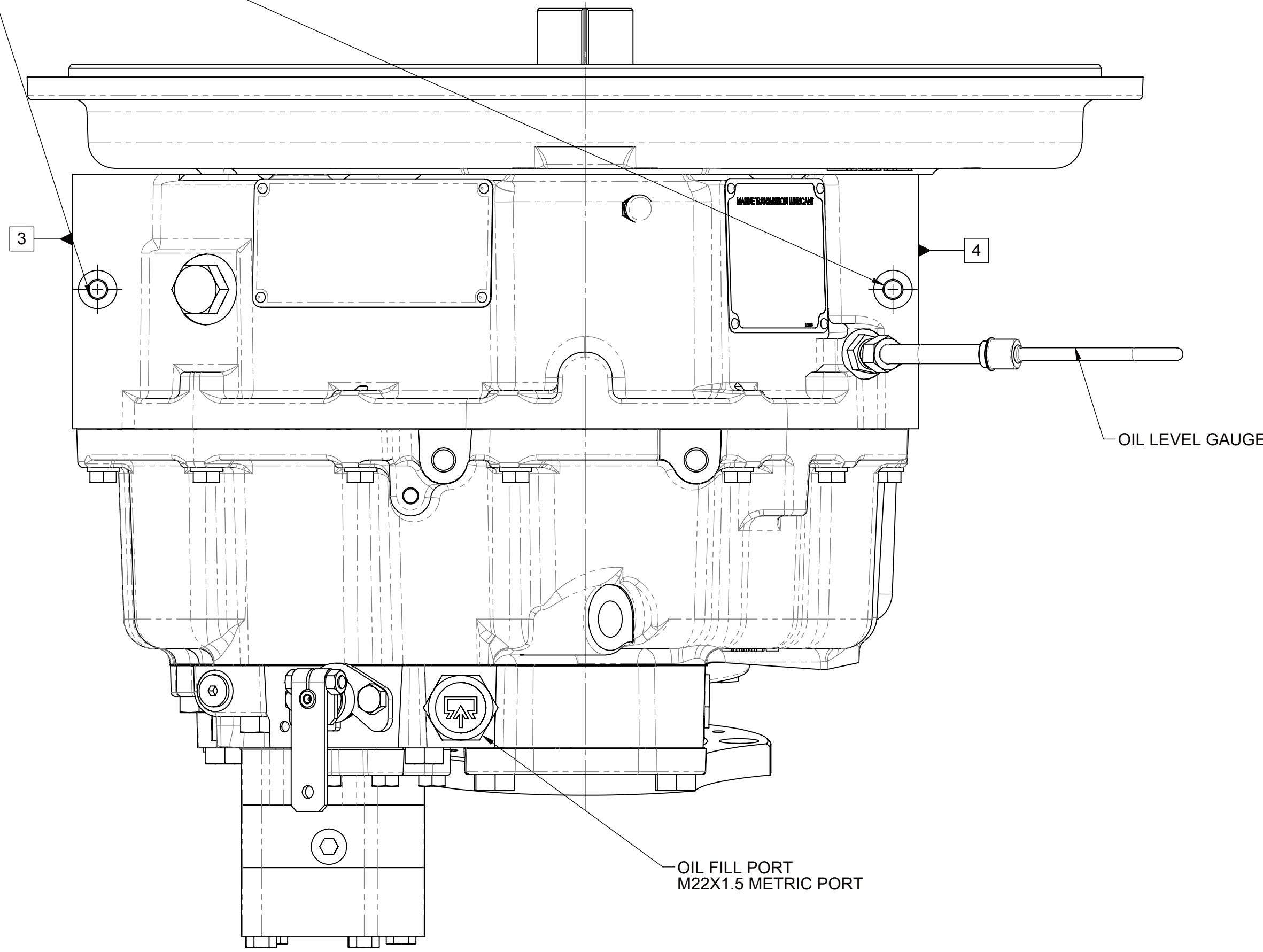
- REFERENCE S930 FOR TWIN DISC REQUIREMENTS FOR PRESSURE AND TEMPERATURE ALARM LEVELS.



■ OPTIONAL TEMPERATURE INDICATING SWITCH:
CUSTOMER TO INSTALL IN A PIPE TEE IN
THE HYDRAULIC LINE LEADING FROM THE
MARINE TRANSMISSION PUMP TO THE HEAT
EXCHANGER INLET. REFER TO HYDRAULIC DIAGRAM.

- 1 INPUT GROUP REFERENCE PLANE
- 2 PTO ADAPTER MOUNTING FACE
- 3 LEFT MOUNTING BRACKET FACE
- 4 RIGHT MOUNTING BRACKET FACE

M10 x 1.5 TAP ± 21.0. 2 HOLES
FOR STANDARD EYE BOLTS
THESE BOLTS MAY BE USED
FOR LIFTING MARINE
TRANSMISSION ONLY



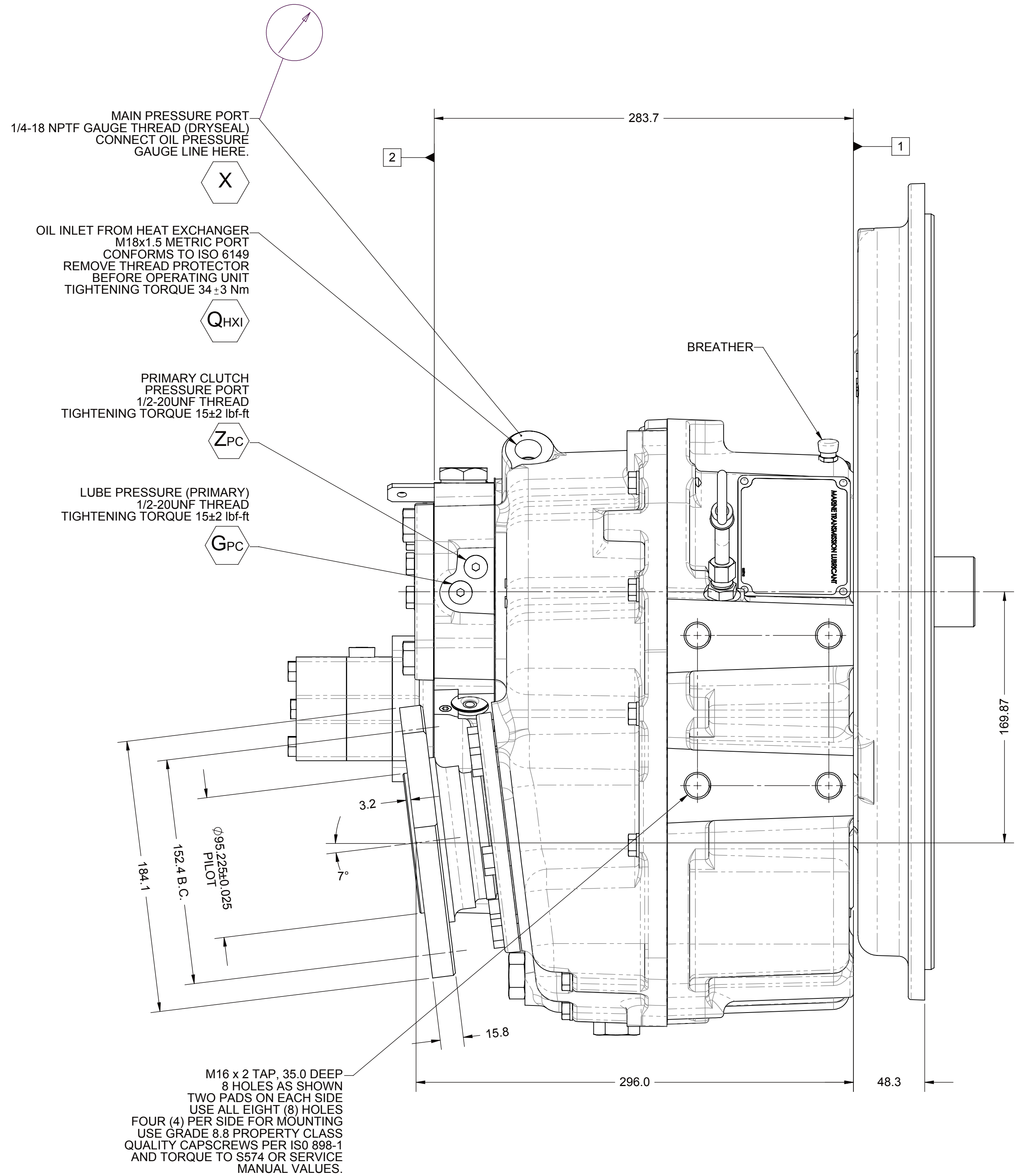
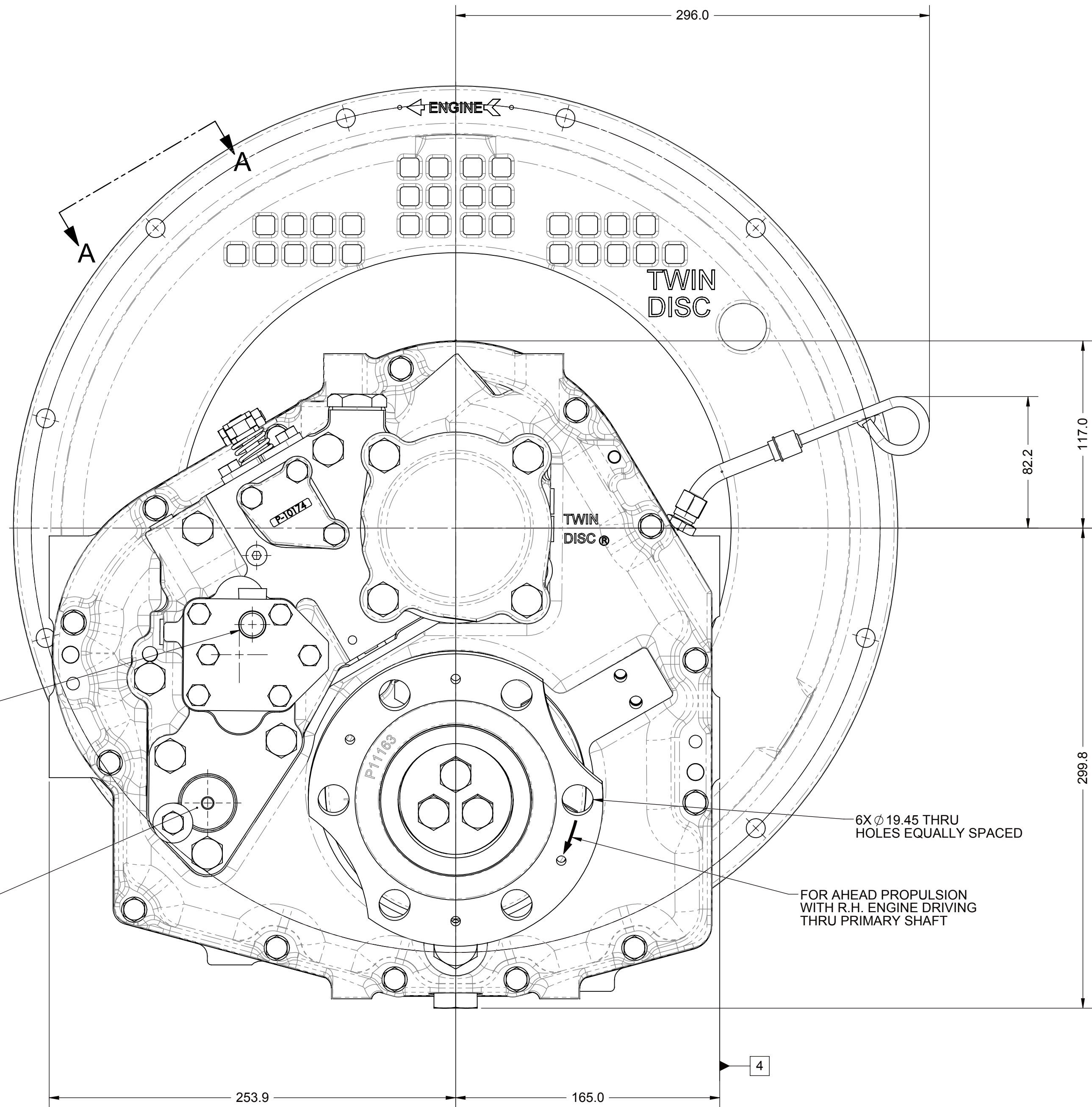
SECONDARY CLUTCH
PRESSURE PORT
1/2-20UNF THREAD
TIGHTENING TORQUE 15±2 lbf-ft
ZSC

LUBE PRESSURE (SECONDARY)
1/2-20UNF THREAD
TIGHTENING TORQUE 15±2 lbf-ft
GSC

■ OIL PUMP OUTLET TO HEAT EXCHANGER
3/8-18 NPTF, THREAD (DRYSEAL)
CONFORMS TO J476
TIGHTENING TORQUE 27±3 lbf-ft
REMOVE ALLUMINUM THREAD PROTECTOR
BEFORE OPERATING UNIT.

QH XO

OIL STRAINER



EQUIPMENT SHOWN:
- MG-5065A PER PX11165 SERIES
- MECHANICAL CONTROL VALVE LESS MECHANICAL TROLLING VALVE
- SAE #1 HOUSING ADAPTER

FIRST USE ASSEMBLY: PX11165S		WEIGHT:	kg	lb	THIRD ANGLE PROJECTION	MATERIAL:	DATE:
FIRST USE MODEL: MG-5065A		mm	kg	lb		HEAT TREAT:	12/09/2011
SIMILAR TO: 1026215							SCALE:
METRIC							1:2
UNLESS OTHERWISE SPECIFIED							DRAWN BY:
X .12							KMIL
X .XX							CHECKED BY:
X .XX							JMF
ALL ANGULAR TOLERANCES ±1°							APPROVED BY:
GEOMETRIC TOLERANCING							ALC
PER ASME Y14.5M 1994							DATE:
THIS NOTE IS THE PROPERTY OF TWIN DISC, INC. AND IS NOT TO BE REPRODUCED OR TRANSMITTED IN ANY FORM OR BY ANY MEANS, ELECTRONIC OR MECHANICAL, WITHOUT PERMISSION IN WRITING FROM TWIN DISC, INC.							04/27/2012
DESCRIPTION:		INSTALLATION		SHEET		REV:	
MG-5065A		A0		1 OF 1		-	

NDWIF-01996	04/27/2012
REV: CHANGE NO.	DATE
TWIN DISC	
RACINE, WI 53403 - USA	
1026552	