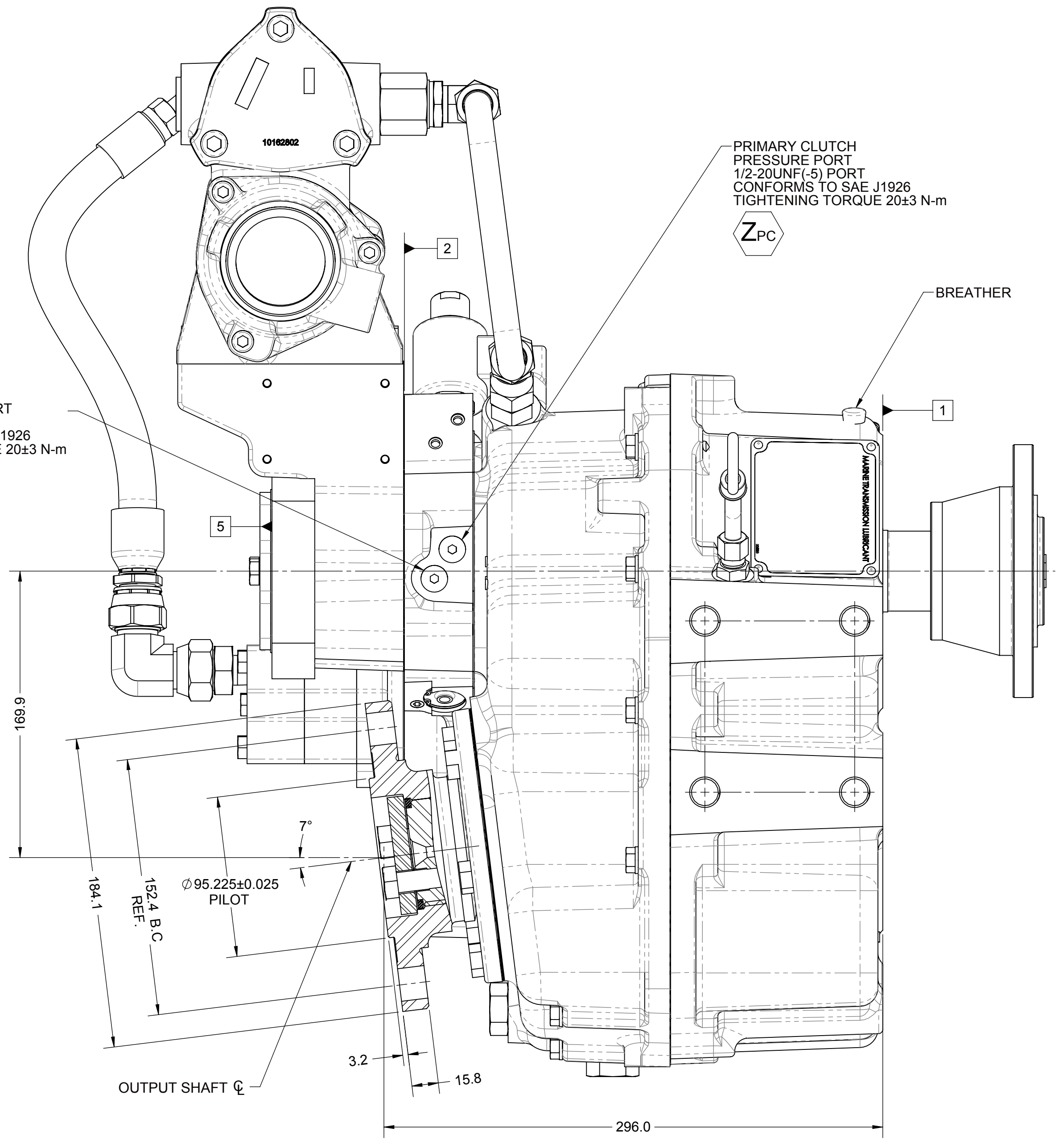
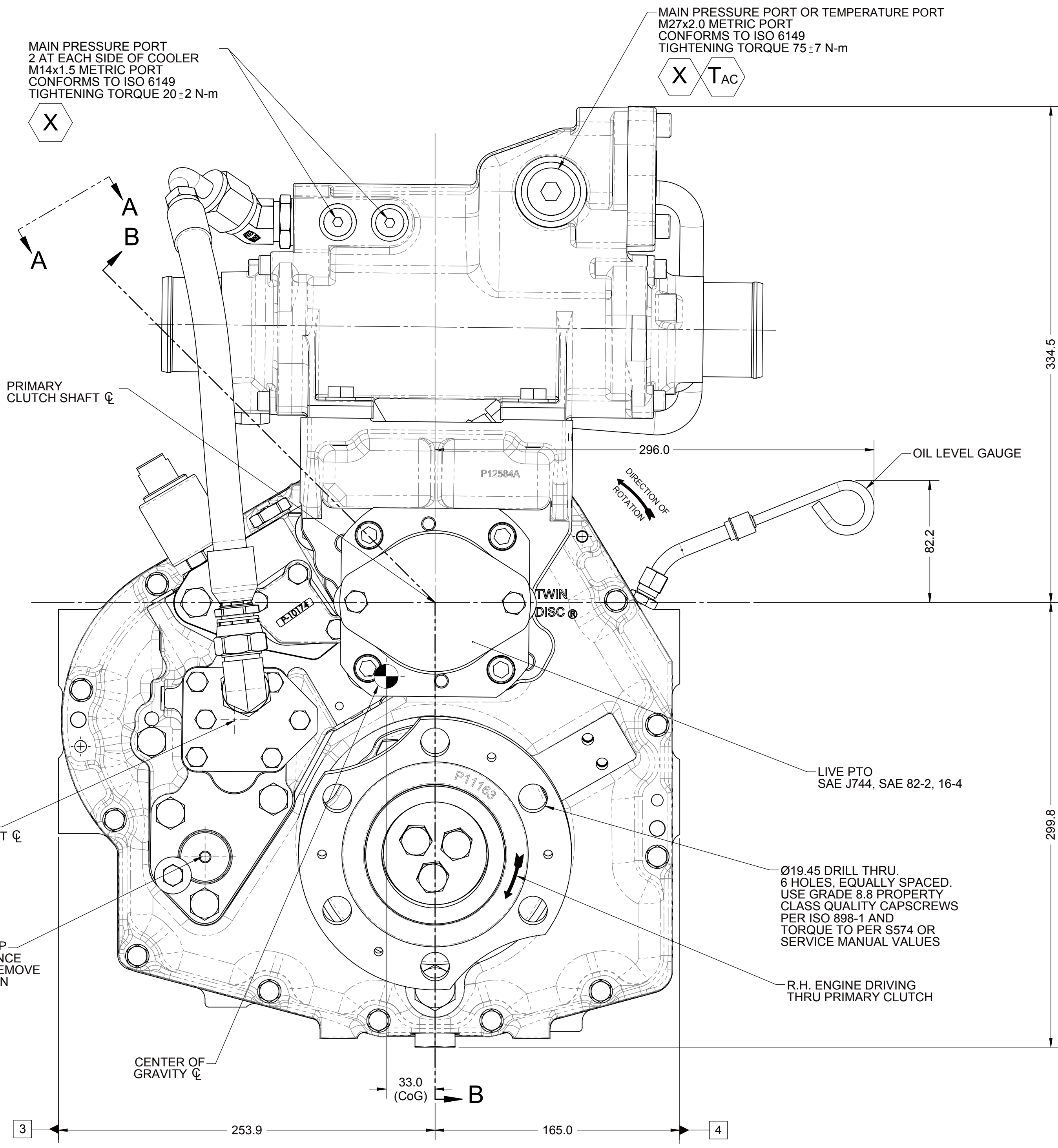
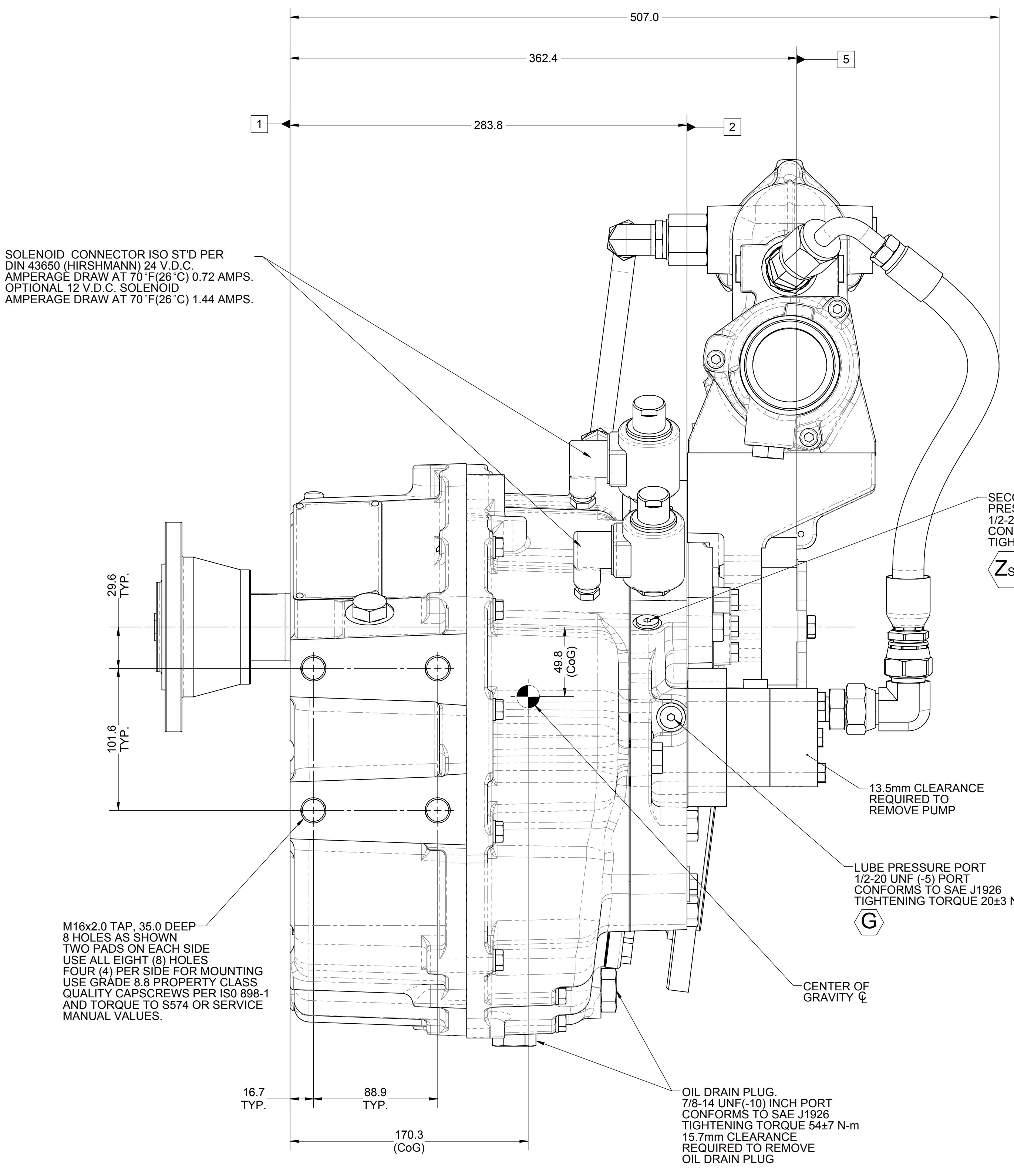
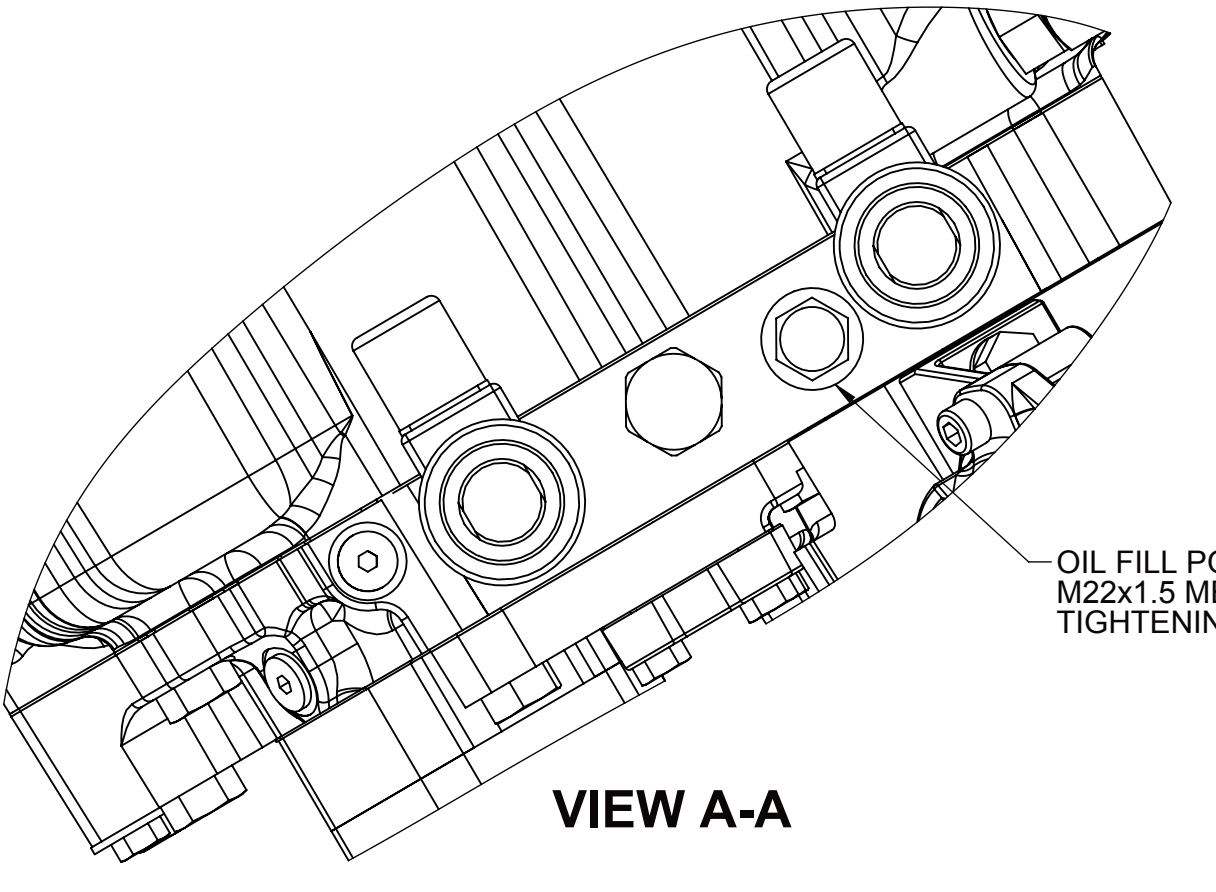
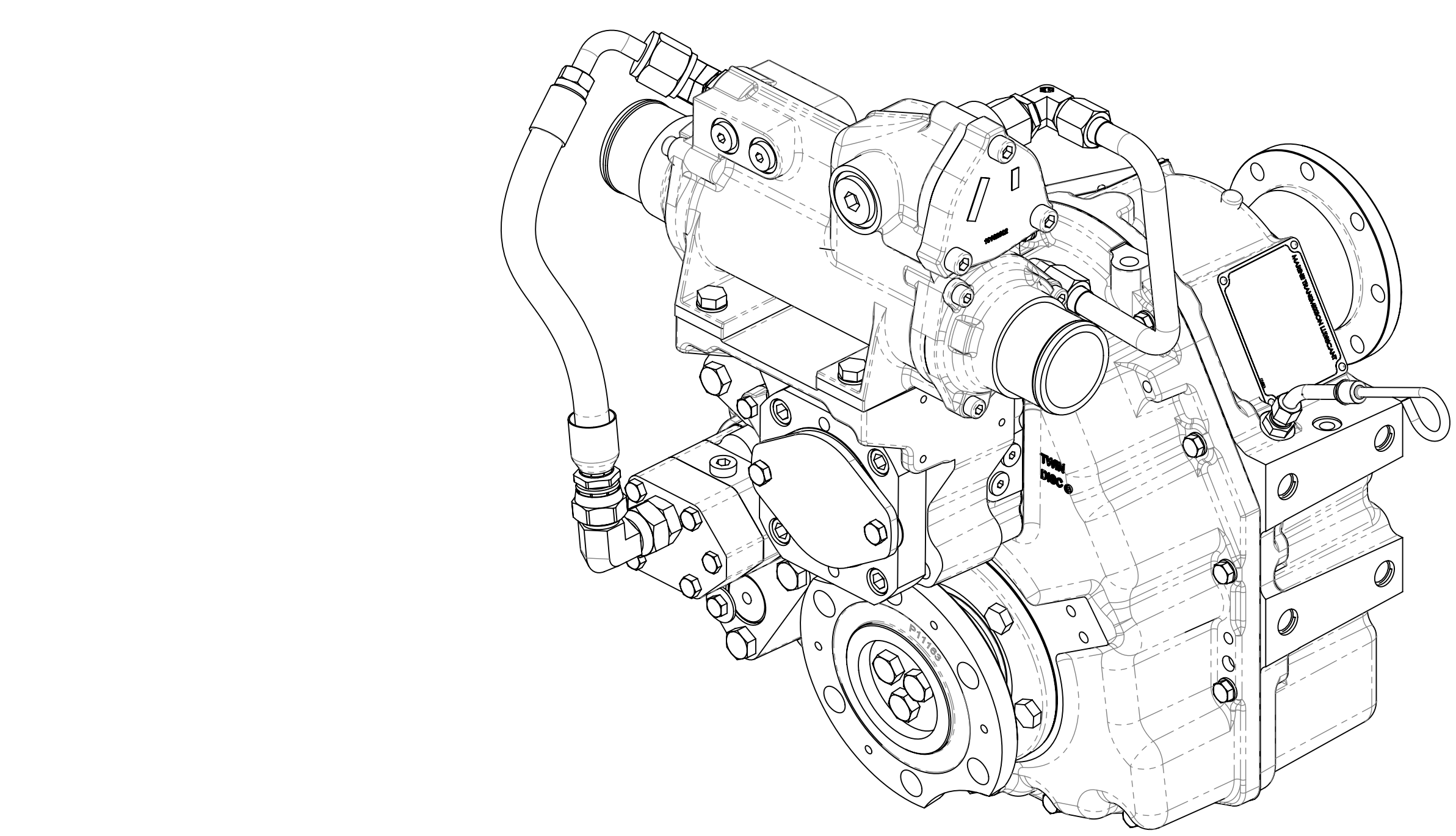
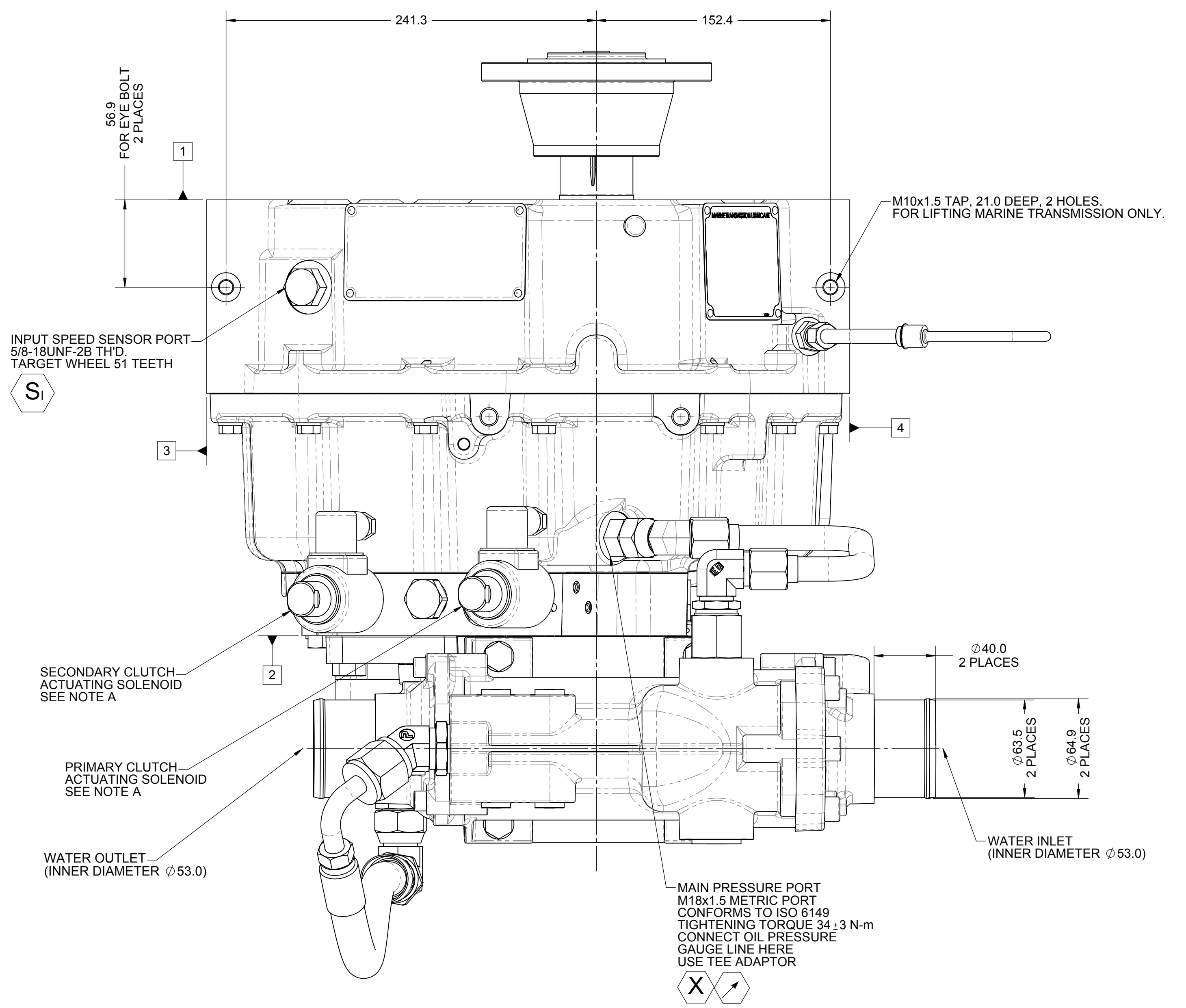
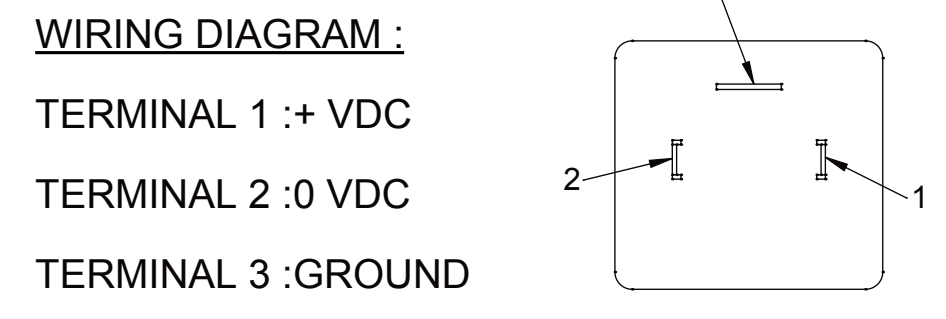
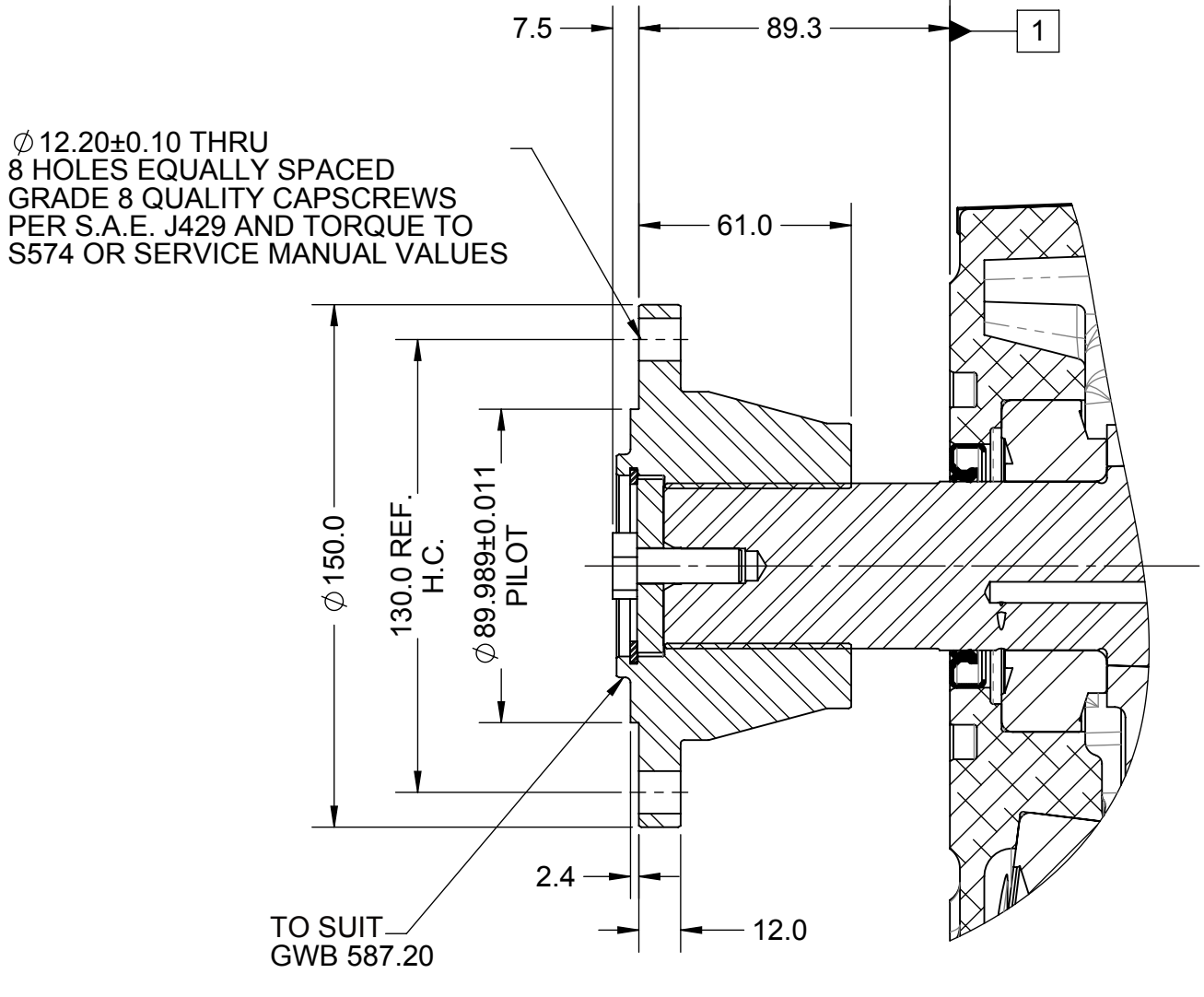


- 1 INPUT GROUP MOUNTING FACE
- 2 PTO GROUP MOUNTING FACE
- 3 LEFT BRACKET MOUNTING FACE
- 4 RIGHT BRACKET MOUNTING FACE
- 5 PUMP MOUNTING FACE

NOTES:

- A. MANUAL OVERRIDE VALVE OPERATION**
1. THE MANUAL OVERRIDE FEATURE FOR THE PRIMARY AND SECONDARY SOLENOIDS MUST NEVER BE ENGAGED SIMULTANEOUSLY.
 2. THE MANUAL OVERRIDE BUTTON FOR BOTH THE PRIMARY AND SECONDARY SOLENOIDS MUST BE IN THE NEUTRAL POSITION TO OPERATE EITHER SOLENOID ELECTRICALLY.
 3. TO ENGAGE PRIMARY CLUTCH USING THE MANUAL OVERRIDE
 - a. REMOVE PROTECTIVE CAP FROM THE PRIMARY SOLENOID
 - b. PUSH BUTTON DOWN
 - c. CONTINUE TO PUSH BUTTON AND ROTATE CLOCKWISE 180°
 - d. RELEASE BUTTON
 4. TO ENGAGE SECONDARY CLUTCH USING THE MANUAL OVERRIDE
 - a. REMOVE PROTECTIVE CAP FROM THE SECONDARY SOLENOID
 - b. PUSH BUTTON DOWN
 - c. CONTINUE TO PUSH BUTTON AND ROTATE CLOCKWISE 180°
 - d. RELEASE BUTTON
 5. TO RETURN EITHER OF THE PRIMARY OR SECONDARY MANUAL OVERRIDE TO THE NEUTRAL POSITION:
 - a. PUSH BUTTON DOWN
 - b. CONTINUE TO PUSH BUTTON AND ROTATE COUNTER-CLOCKWISE 180°
 - c. RELEASE BUTTON
 - d. INSTALL PROTECTIVE CAP OVER THE MANUAL OVERRIDE BUTTON
- B. REFERENCE S830 FOR TWIN DISC REQUIREMENTS FOR PRESSURE AND TEMPERATURE ALARM LEVELS.**
- C. UNLESS OTHERWISE SPECIFIED, FASTENER TORQUE VALUES PER S574 STANDARD.**
- D. ALL POINTS AVAILABLE FOR TESTING ARE CODED**



- EQUIPMENT SHOWN:**
- MG-5065A PER PX111658 ASSEMBLY
 - GWB 587.20 FREESTANDING INPUT FLANGE
 - ELECTRICAL CONTROL VALVE, 24 VDC W/ MANUAL OVERRIDE
 - LIVE PTO, SAE J744, SAE 82-2, 16-4
 - PM13008 MOUNTED HEAT EXCHANGER

FIRST USE ASSEMBLY	WEIGHT: 118	THIRD ANGLE PROJECTION	MATERIAL	DATE: 07/24/2018	SCALE: 1:2	DRIVEN BY: LT	DESIGNED BY: DV	CHECKED BY: DV	DATE: 07/24/2018	REVISION: 1	DATE: 07/24/2018	BY: DV
SIMILAR TO:	UNLESS OTHERWISE SPECIFIED, USE GRADE 8.8 PROPERTY CLASS QUALITY CAPSCREWS PER ISO 898-1 AND TORQUE TO PER S574 OR SERVICE MANUAL VALUES.	ALL ANGULAR DIMENSIONS ±1° UNLESS OTHERWISE SPECIFIED	GEOMETRIC TOLERANCING PER ASME Y14.5M-1994	DESCRIPTION: INSTALLATION MG-5065A		SHEET: 1 OF 1		REV: -		DWG: A0		
METRIC			TWIN DISC, INCORPORATED			RACINE, WI 53403, USA			1026552K			