

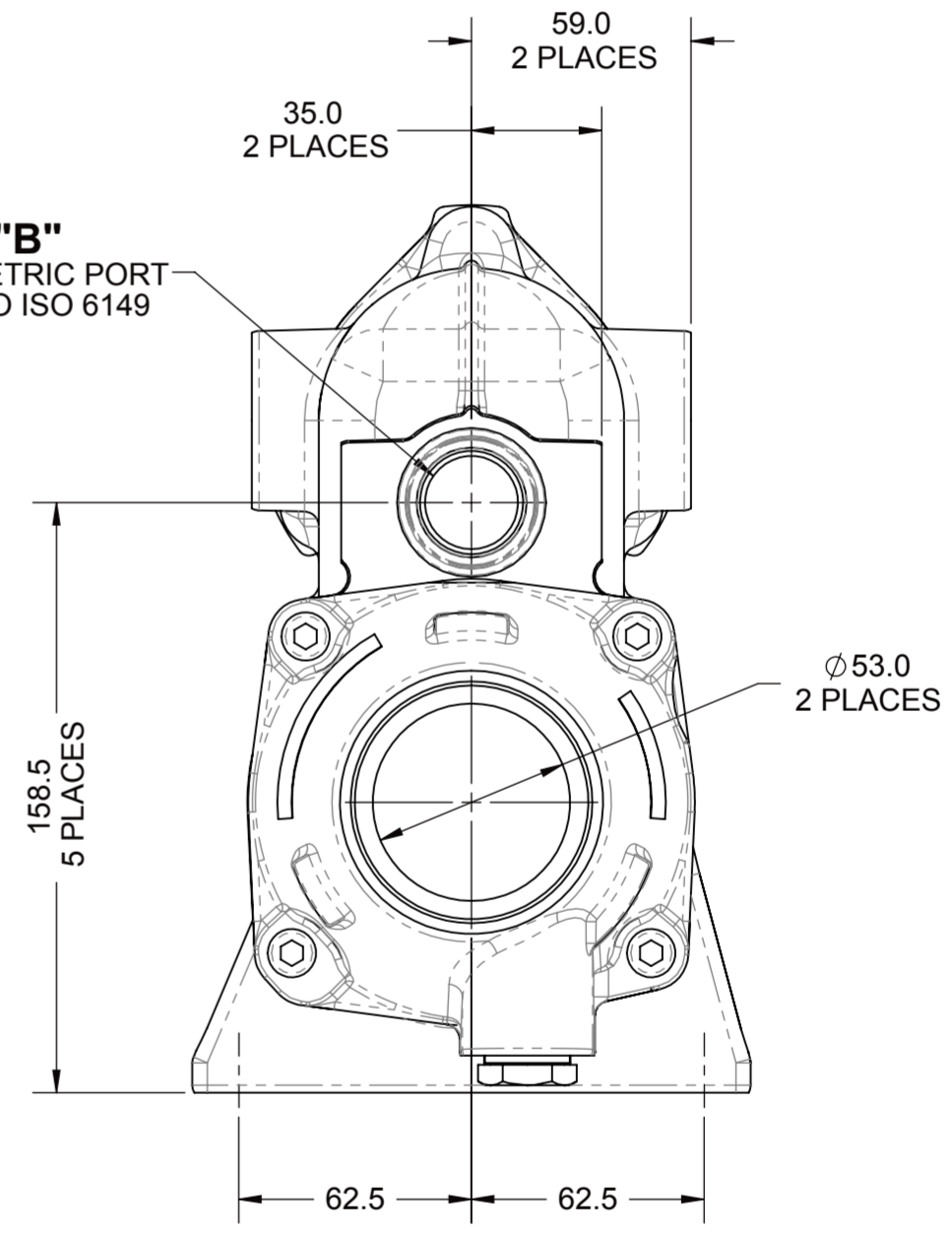
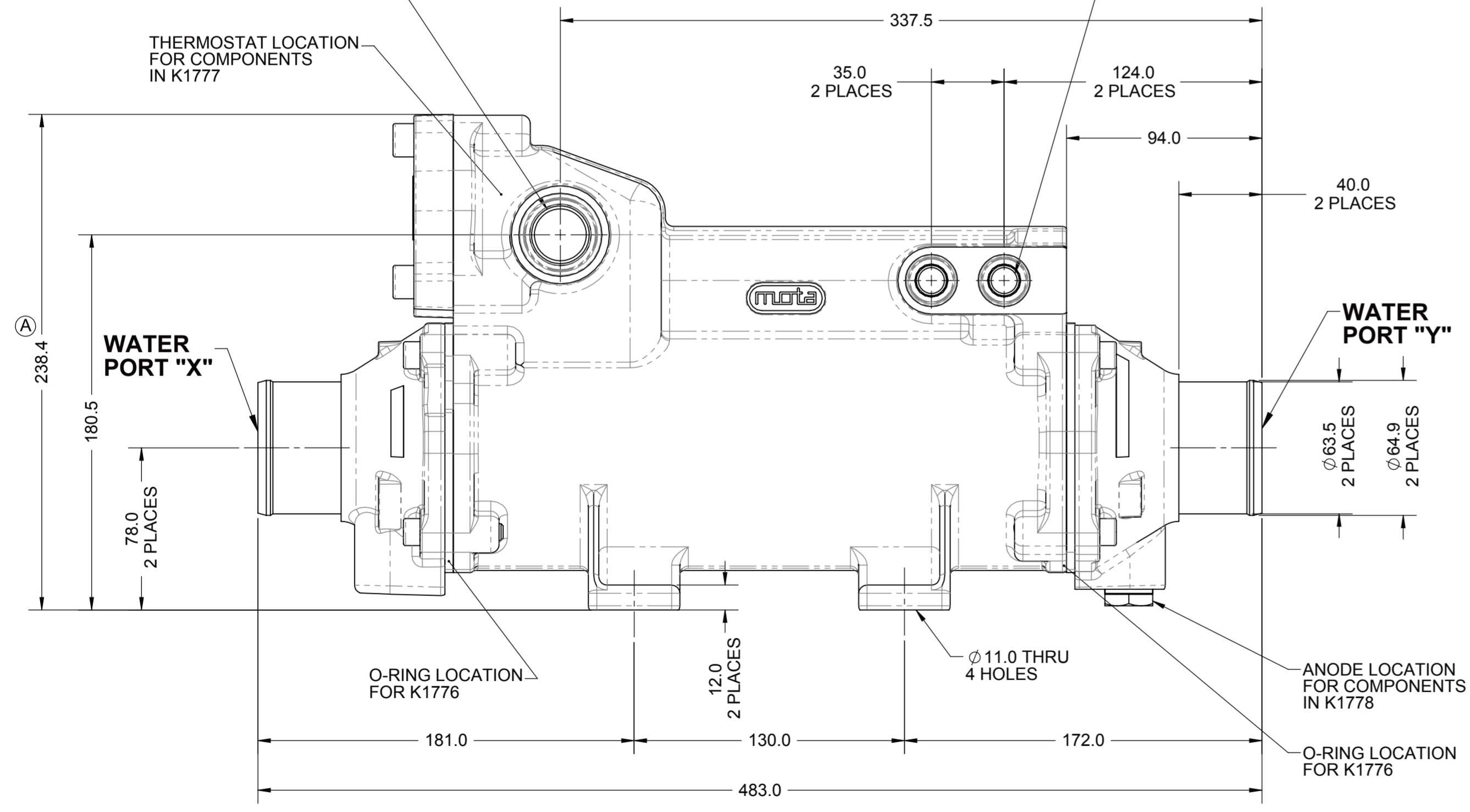
TDI KIT NO.	TDI PART NO.	QTY.	DESCRIPTION	REV.	WORKFLOW
K1776			O-RING KIT	-	NDWF-01984
	PM13012C	4	O-RING (END BONNETS)		
	-	1	COPY OF DRAWING 1026808A		
K1777			THERMOSTAT KIT		SEE 1026808
	PM13012A	1	O-RING (THERMOSTAT COVER)		
	PM13016	1	SEAL (THERMOSTAT)		
	PM11158	1	THERMOSTAT		
	-	1	COPY OF DRAWING 1026808		
	-	1	COPY OF DRAWING 1026808A		
K1778			ANODE KIT		SEE 1026808
	PM13013	1	ANODE		
	PM13014	1	PLUG, THREADED (ANODE)		
	PM13015	1	WASHER, SEALING		
	-	1	COPY OF DRAWING 1026808		
	-	1	COPY OF DRAWING 1026808A		

OIL PORT "A"
M27x2.0-6H METRIC PORT
CONFORMS TO ISO 6149
2 PLACES

THERMOSTAT LOCATION
FOR COMPONENTS
IN K1777

OIL PORT "C"
M14x1.5-6H METRIC PORT
CONFORMS TO ISO 6149
4 PLACES

OIL PORT "B"
M27x2.0-6H METRIC PORT
CONFORMS TO ISO 6149



THERMOSTAT SET POINT - 70°C CRACKING / 85°C FULL OPEN
MINIMUM WATER FLOW - 170 L/MIN
MAXIMUM WATER FLOW - 330 L/MIN
MAXIMUM OIL FLOW - 120 L/MIN
MAXIMUM OPERATING PRESSURE
WATER SIDE - 10 BAR
OIL SIDE - 25 BAR
TEST PRESSURE
WATER SIDE - 4 BAR
OIL SIDE - 6 BAR
MAXIMUM OPERATING RAW WATER TEMP. - 60°C

FIRST USE ASSEMBLY:	WEIGHT:	kg	THIRD ANGLE PROJECTION	MATERIAL:	DATE:
FIRST USE MODEL:	WR:	kg-m ²		HEAT TREAT:	07/26/2011
SIMILAR TO: PM11261C				DESCRIPTION:	SCALE:
METRIC			UNLESS OTHERWISE SPECIFIED MACHINED DIMENSIONS	1:2	
NOTICE: THIS PRINT CONTAINS PROPRIETARY INFORMATION AND IS NOT TO BE USED IN ANY MANNER DETRIMENTAL TO THE INTEREST OF TWIN DISC, INCORPORATED			X ±0.75	DRAWN BY: JCS	
THIS NOTICE IS NOT INTENDED TO NULLIFY OR LIMIT RIGHTS GRANTED TO THE U.S. GOVERNMENT OR OTHERS BY CONTRACT.			X.X ±0.25	CHECKED BY: JCS	
			X.XX ±0.13	APPROVED BY: ALC	
			ALL ANGULAR TOLERANCES ±1°	DWG SIZE: A2	
			GEOMETRIC TOLERANCING PER ASME Y14.5M 1994	SHEET: 1 OF 1	
				REV: A	

A	ECNWF-50058	12/21/2011
REV	CHANGE NO.	DATE
TWIN DISC		
RACINE, WI 53403 - USA		
1026808A		

D

C

B

A