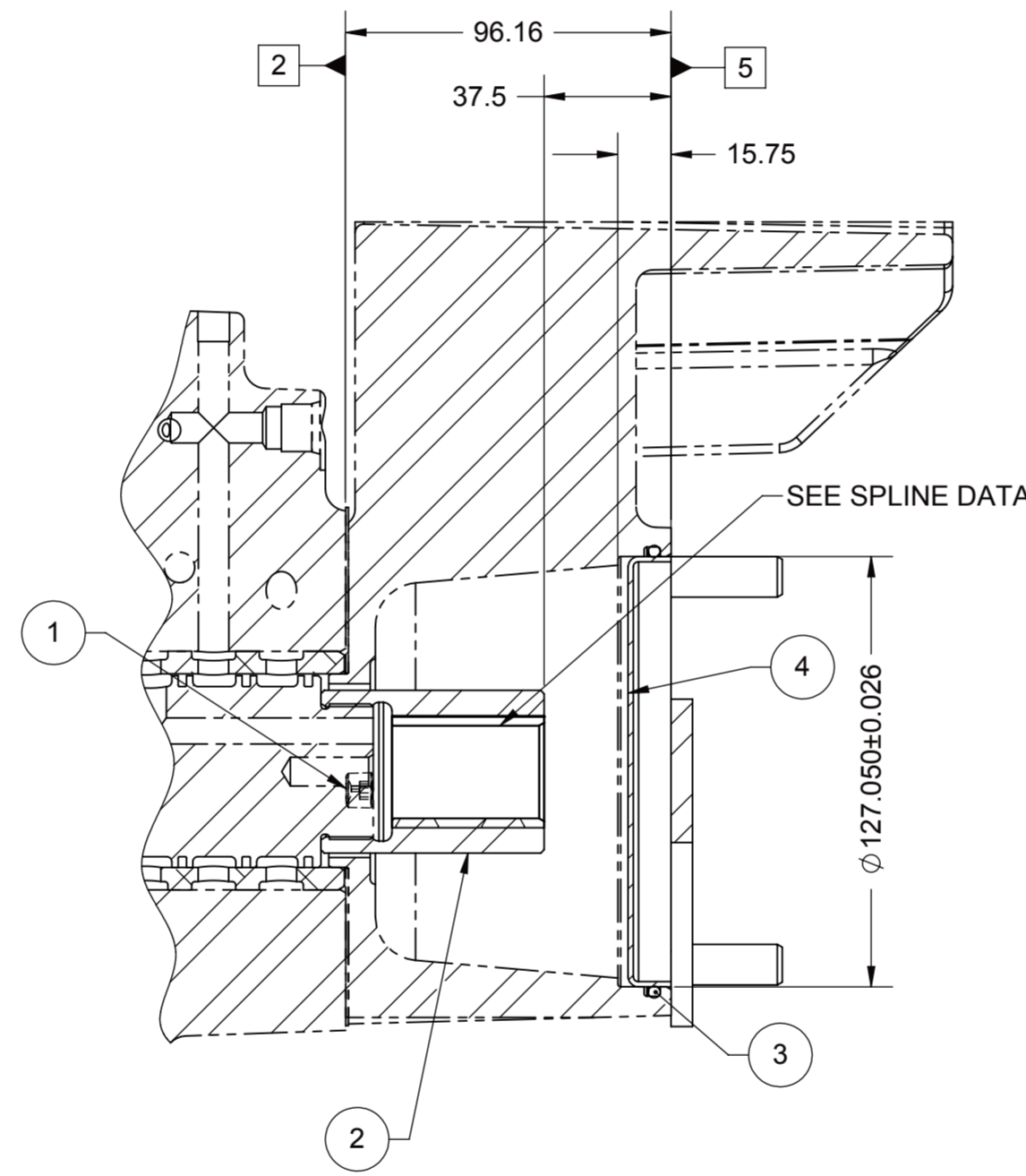
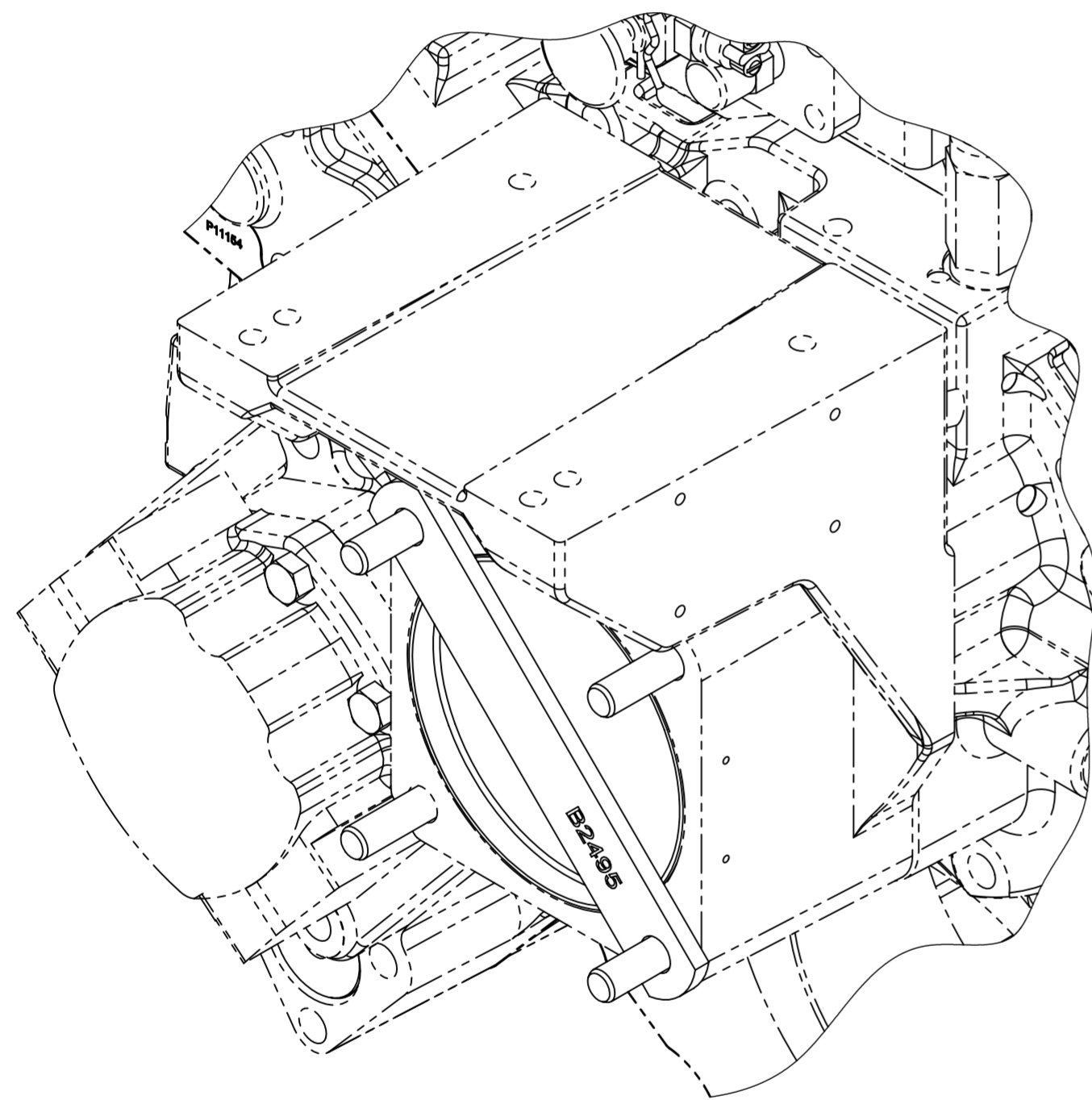


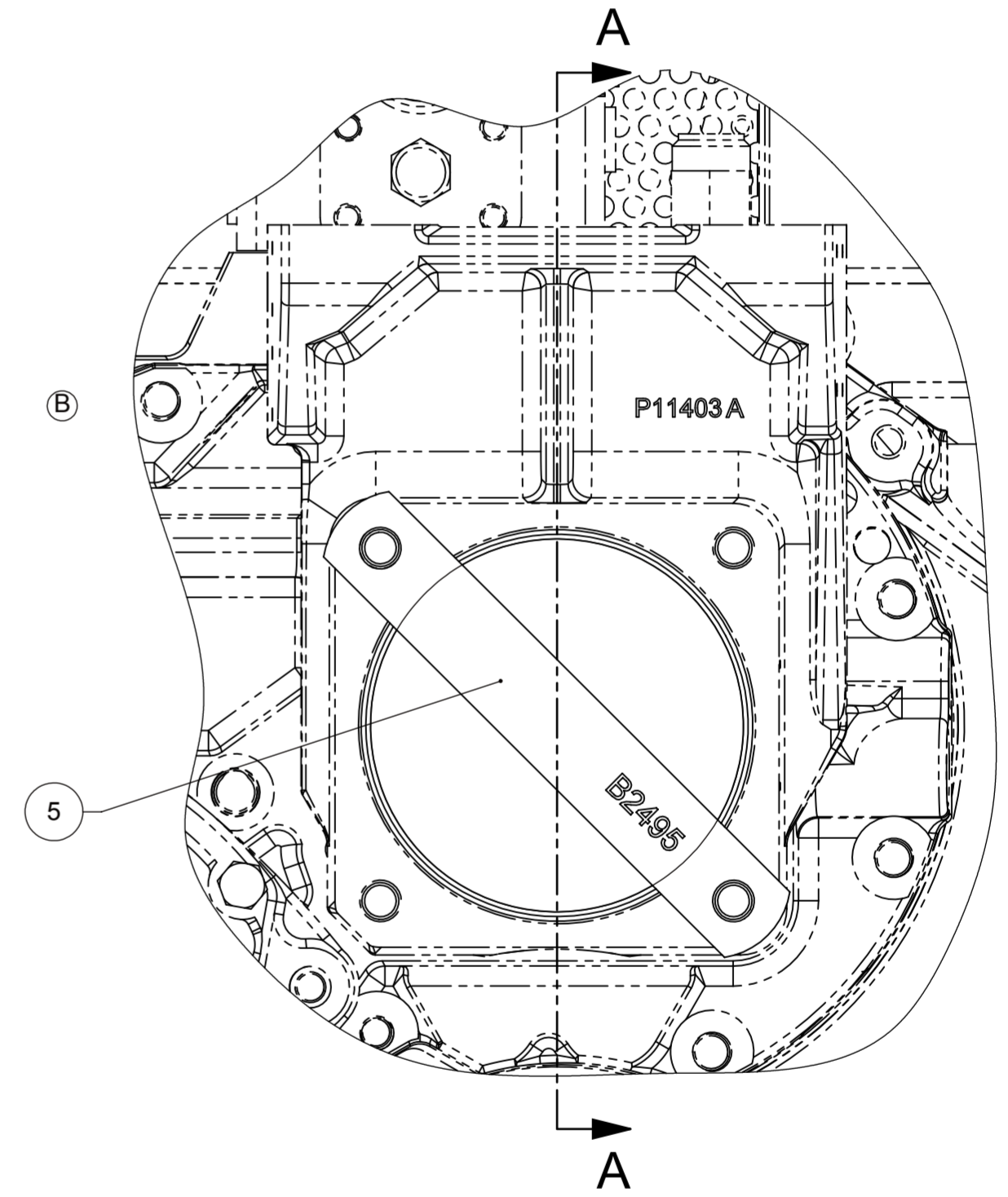
INTERNAL SPLINE DATA		(REF) TWIN DISC ENGR. STD. S435
ROOT FLAT	PRESSURE ANGLE	30°
NO. OF TEETH	PITCH	12/24
PITCH DIA (REF)	FORM DIA. MIN.	1.250
MAJOR DIAMETER	MAX.	1.284
CIRCULAR SPACE WIDTH	MIN. EFF.	.1305
	MAX. ACT.	.1337
MEASUREMENT BETWEEN .144 DIA. PINS WITH NONE TO FLAT	MIN. REF.	.9573
	MAX. ACT.	.9607
SPLINE DATA IN INCHES		

BILL OF MATERIAL			
ITEM NO.	QTY.	PART NO.	DESCRIPTION
1	1	M2051GU	PLUG, PIPE
2	1	1026777	ADAPTER, SPLINED
3	1	A2916HB	RING, O
4	1	M1945T	PLUG
5	1	B2495	STRAP
6	1		INCLUDE (1) COPY OF DRAWING 1026819

▲ FOR SHIPPING USE ONLY. REMOVE THESE PARTS AND INSTALL PUMP PRIOR TO OPERATING.



SECTION A-A



- 2 PTO ADAPTER MOUNTING FACE
- 5 LIVE PTO PUMP MOUNT FACE

APPLICABLE MODELS:
 MG-5136A PER 1027557 ASSEMBLY
 MGX-5136A PER 1025600 ASSEMBLY
 A MG-5136SC PER 1027560 ASSEMBLY
 MGX-5136SC PER 1027445 ASSEMBLY
 MG-5146A PER 1027902 ASSEMBLY
 C MGX-5146A PER 1027596 ASSEMBLY
 MG-5146SC PER 1027904 ASSEMBLY
 MGX-5146SC PER 1027661 ASSEMBLY

FOR RH ENGINE USE ONLY.

ASSEMBLY INSTRUCTIONS:

- SEE S570DX SECTION I FOR ASSEMBLY INSTRUCTIONS
- REFERENCE S570DX FOR ADDITIONAL STANDARDS THAT MAY APPLY.
- ALL SCREWS TO BE TORQUED TO S574 VALUES, UNLESS OTHERWISE SPECIFIED.

MAXIMUM APPROVED TORQUE TO SAE J744 NO. 32-4
 SIZE PUMP ADAPTER: 592 Nm.
 FOR USE ON RH ENGINES ONLY.
 CONSULT SALES DEPARTMENT APPLICATION ENGINEERS FOR OTHER LIMITING CONDITIONS.

FIRST USE ASSEMBLY: 1025600 FIRST USE MODEL: MGX-5136A SIMILAR TO:	WEIGHT: 0.8002 kg WR: 0.0010 kg-m ²	THIRD ANGLE PROJECTION	MATERIAL:	DATE: 08/08/2011 SCALE: 1:2	 RACINE, WI 53403 - USA 1026819
METRIC	UNLESS OTHERWISE SPECIFIED MACHINED DIMENSIONS X ±0.75 XX ±0.25 XXX ±0.13	HEAT TREAT:	DESCRIPTION: GROUP, PTO SAE J744 32-4 LIVE PTO ADAPTER	DRAWN BY: KML CHECKED BY: JMF APPROVED BY: ALC	
<small>NOTICE: THIS PRINT CONTAINS PROPRIETARY INFORMATION AND IS NOT TO BE USED IN ANY MANNER DETRIMENTAL TO THE INTEREST OF TWIN DISC, INCORPORATED. THIS NOTICE IS NOT INTENDED TO NULLIFY OR LIMIT RIGHTS GRANTED TO THE U.S. GOVERNMENT OR OTHERS BY CONTRACT.</small>			<small>PER ASME Y14.5M 1994</small>		DWG SIZE: A2 SHEET: 1 OF 1 REV: C

D

C

B

A