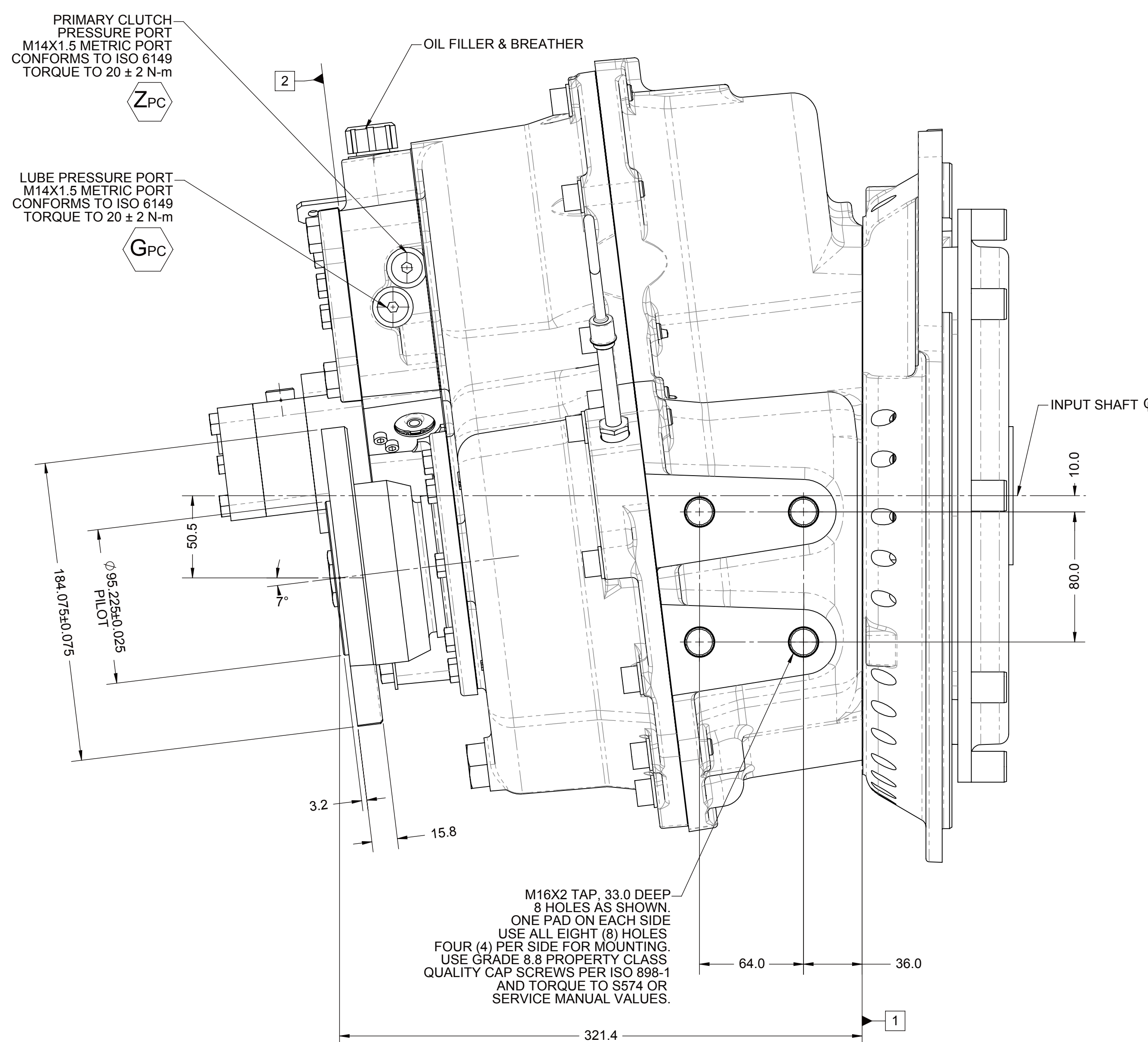
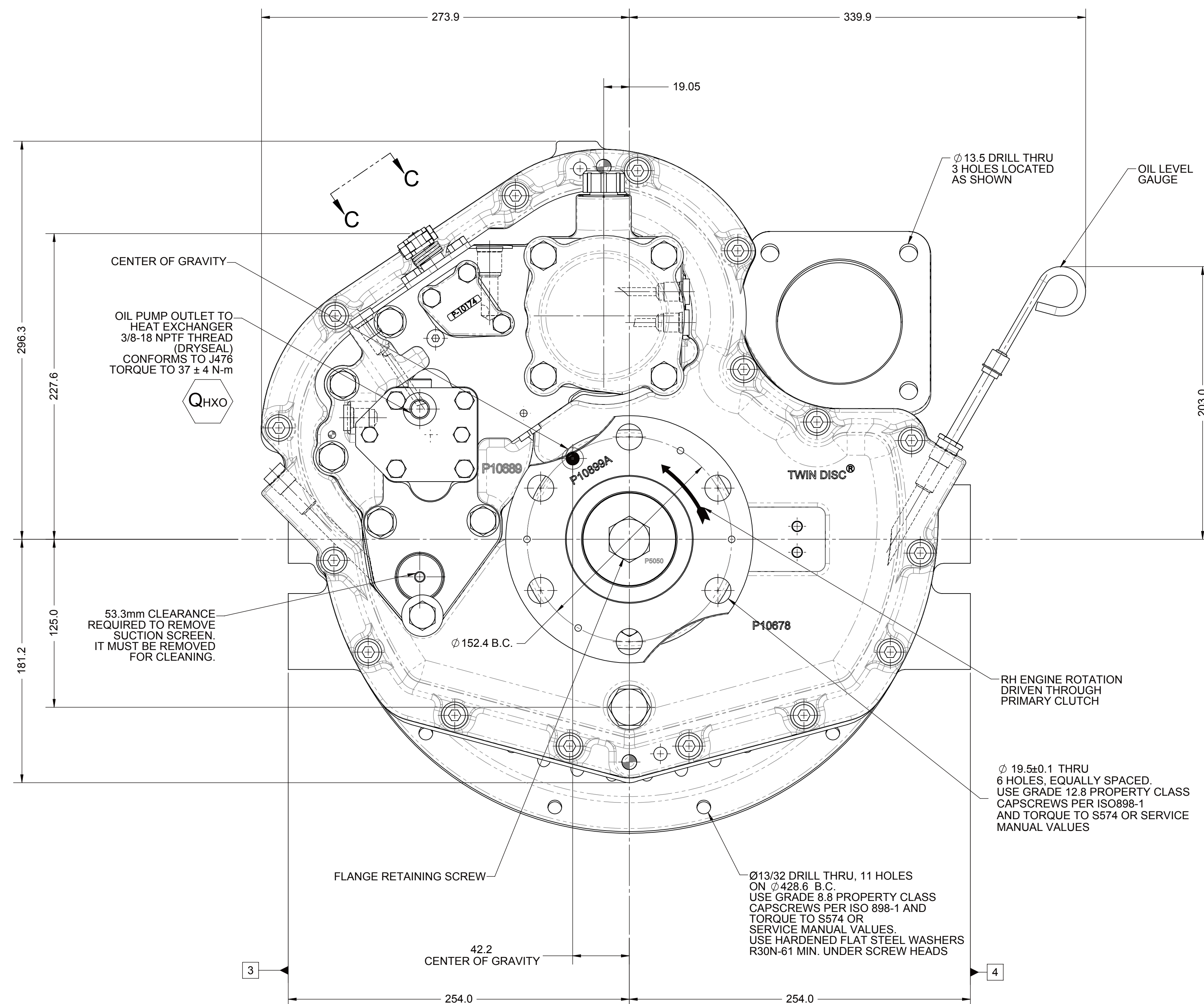
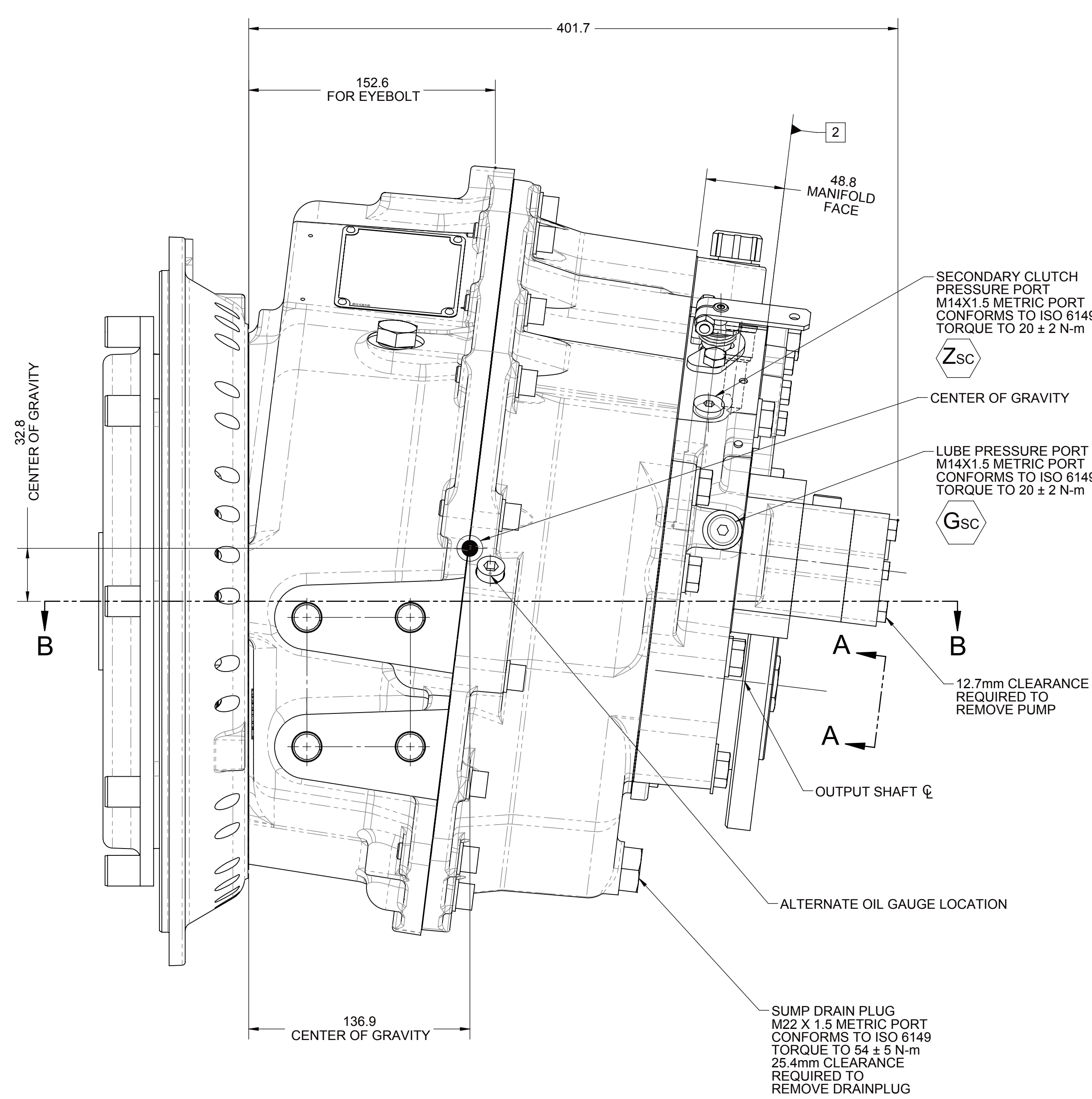
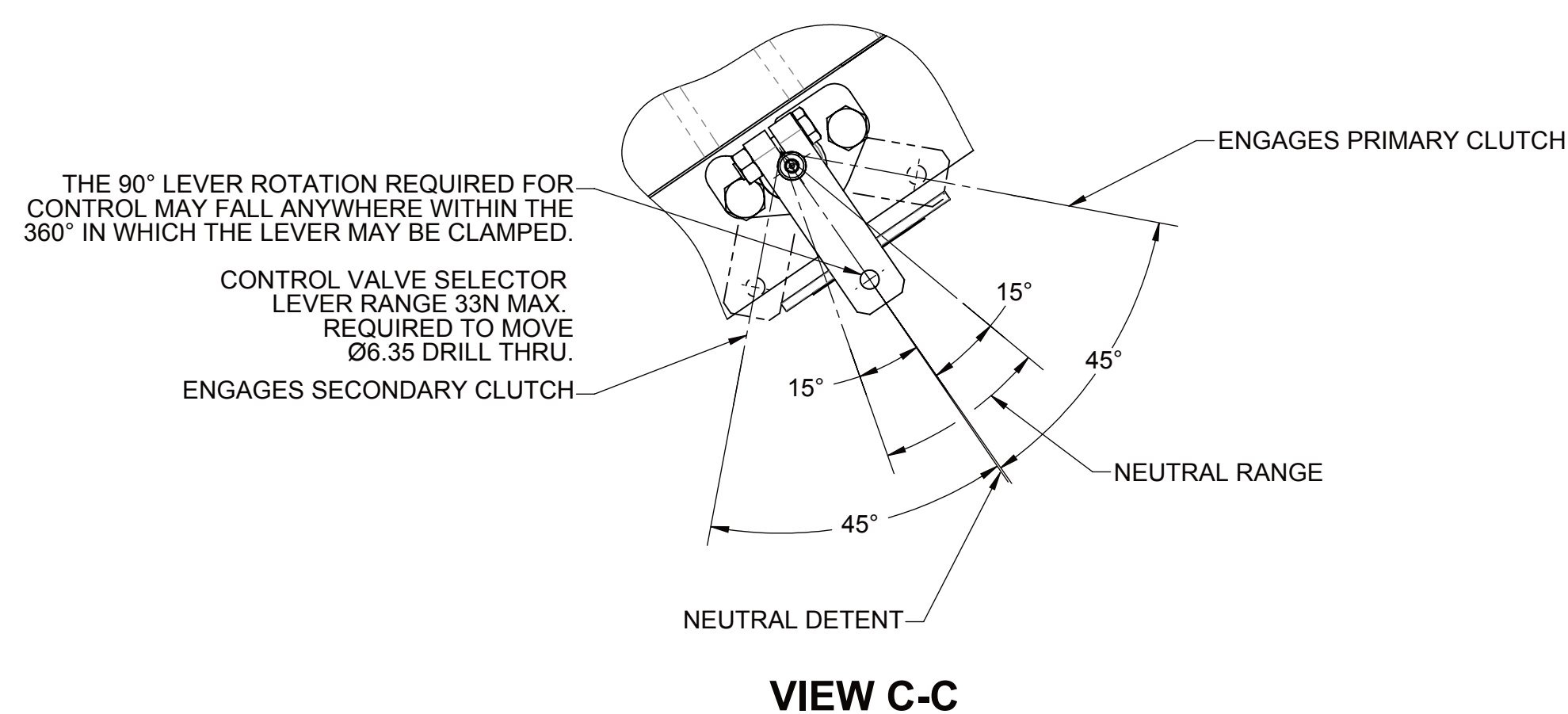
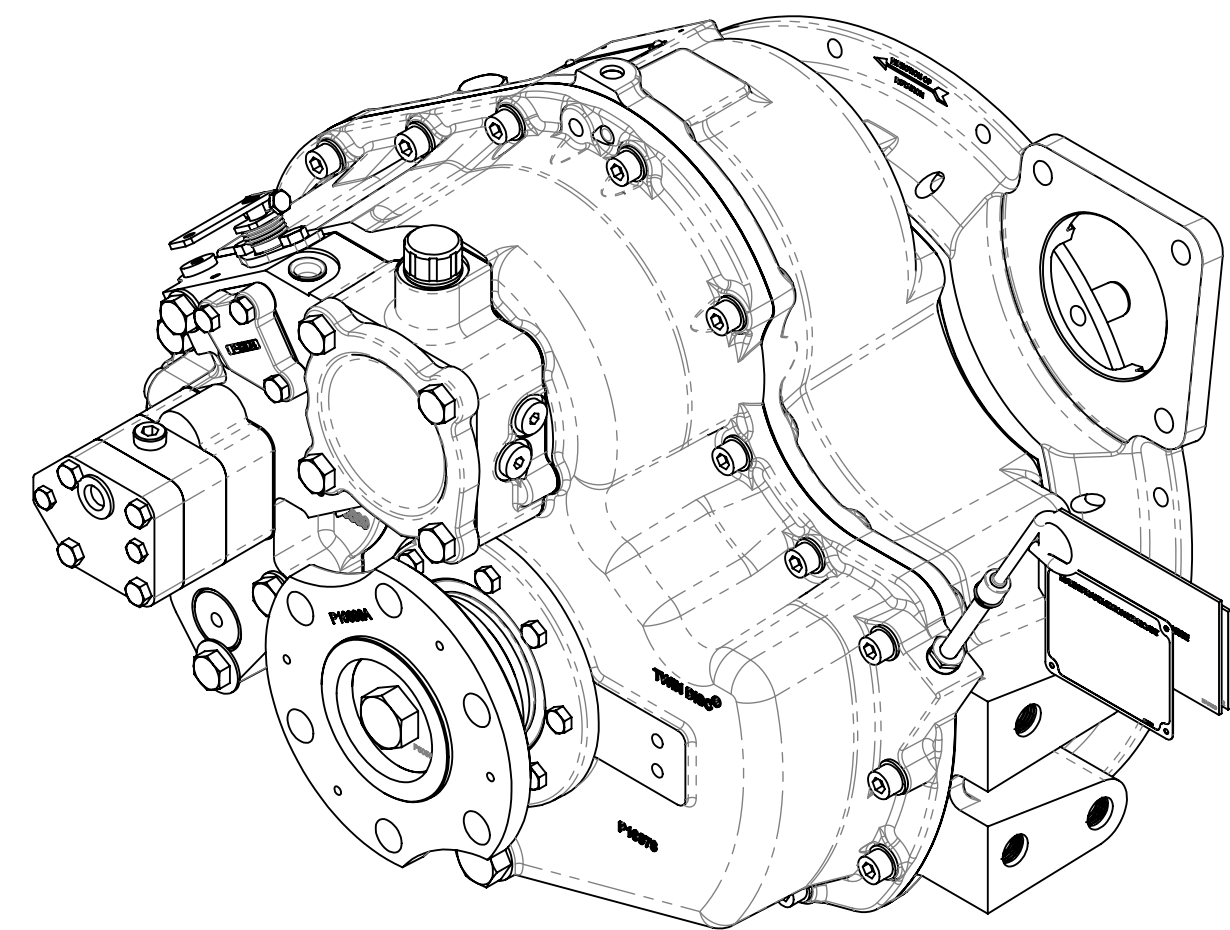
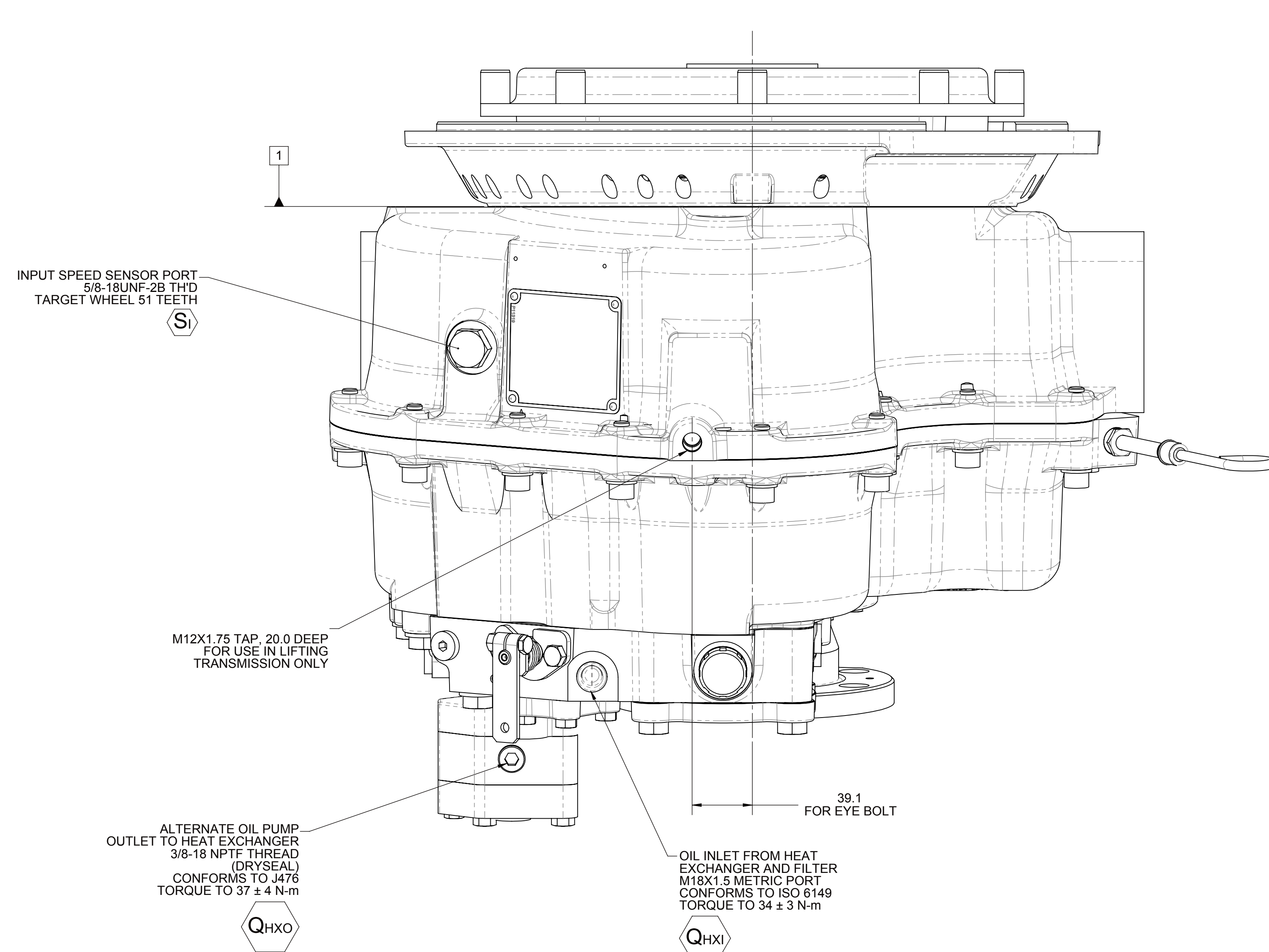
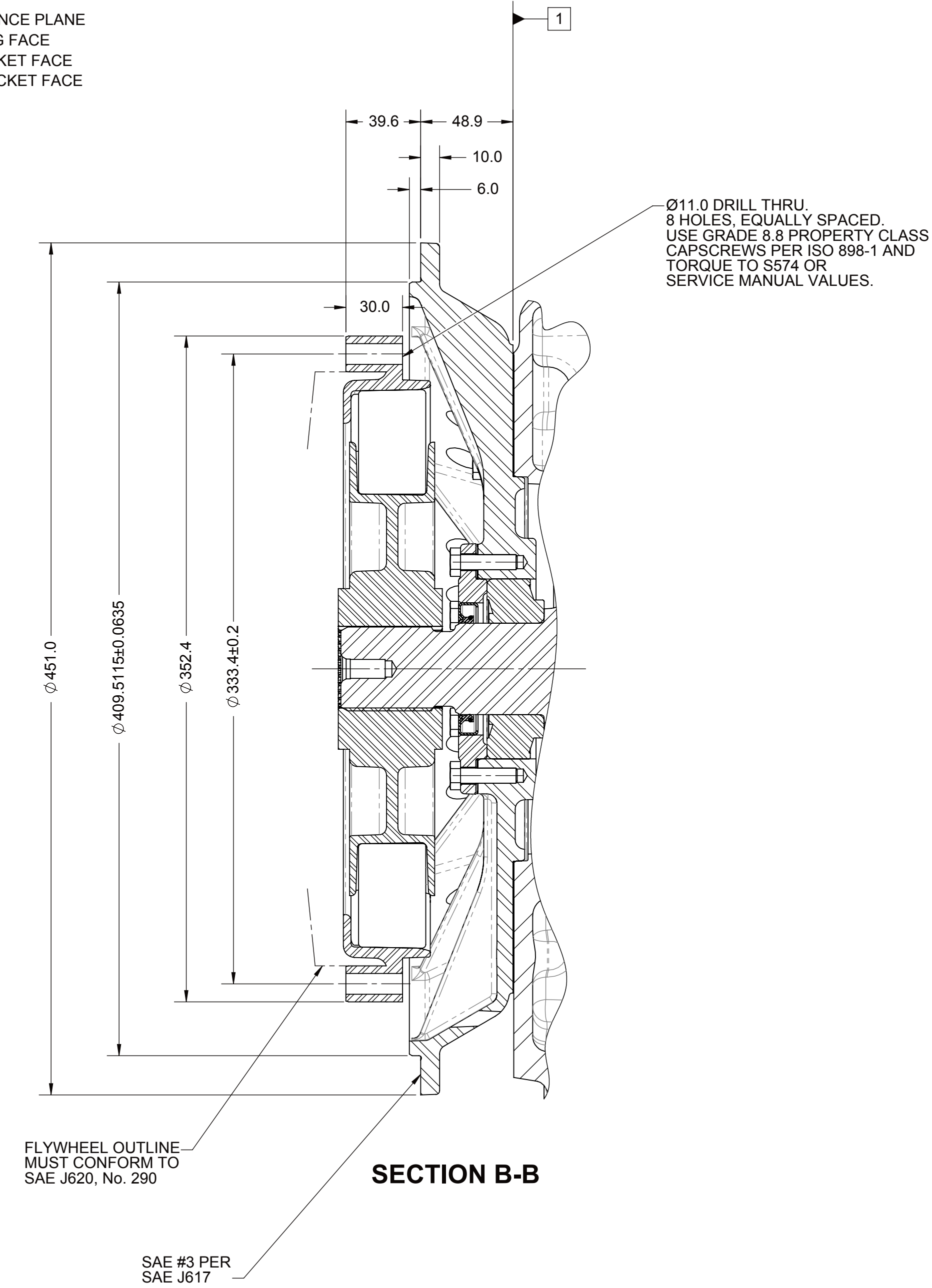



- ☐ 1 INPUT GROUP REFERENCE PLANE  
☐ 2 PTO GROUP MOUNTING FACE  
☐ 3 LEFT MOUNTING BRACKET FACE  
☐ 4 RIGHT MOUNTING BRACKET FACE



**NOTE:**

A. ALL POINTS AVAILABLE FOR TESTING ARE CODED 

B. REFERENCE S930 FOR TWIN DISC REQUIREMENTS FOR PRESSURE AND TEMPERATURE ALARM LEVELS.

**EQUIPMENT SHOWN:**

- MG-5075A PER PX10700 SERIES
- SAE #3 CATERPILLAR HOUSING
- SAE 290 CENTA CF-R-178-HR COUPLING
- MECHANICAL CONTROL VALVE
- SAE#4 OUTPUT FLANGE

[illegible]