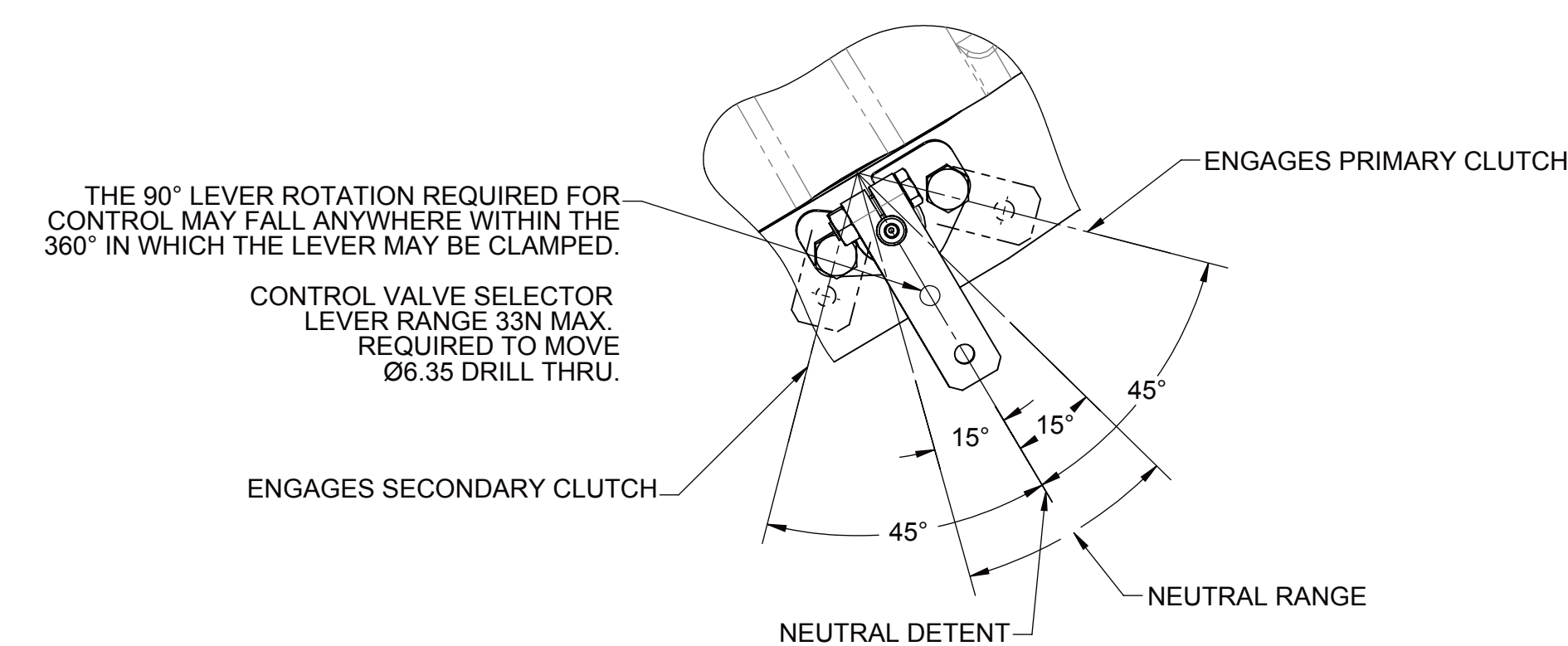
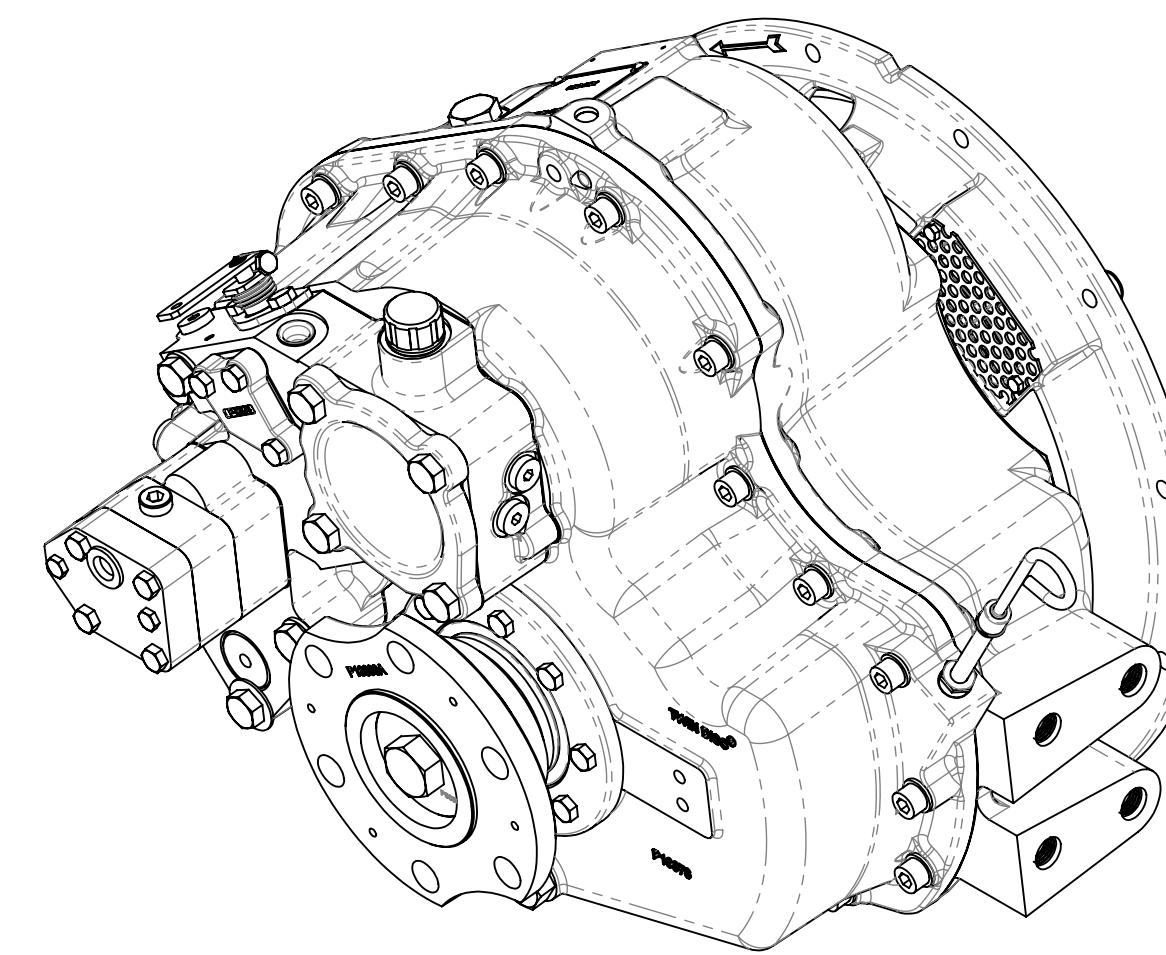
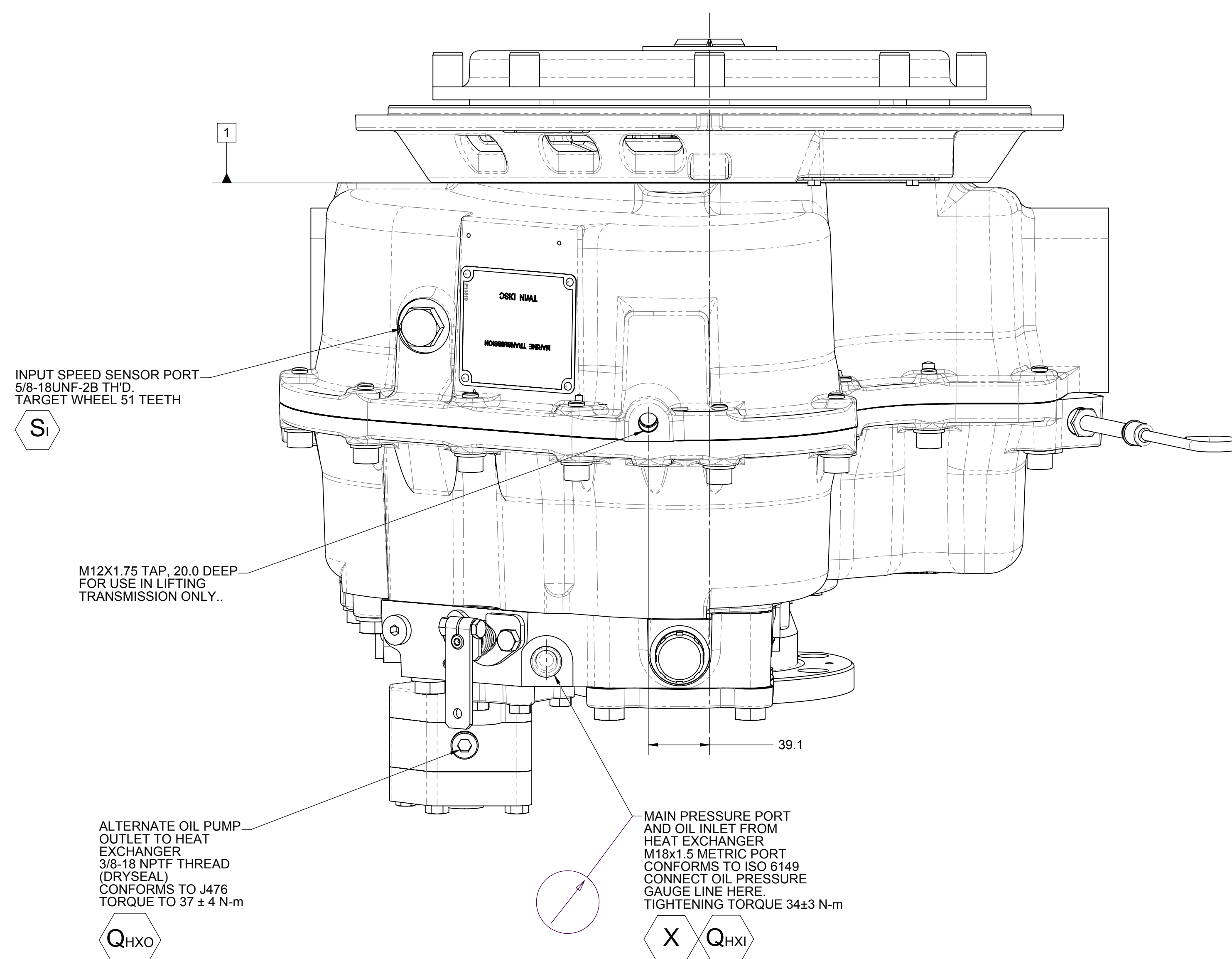
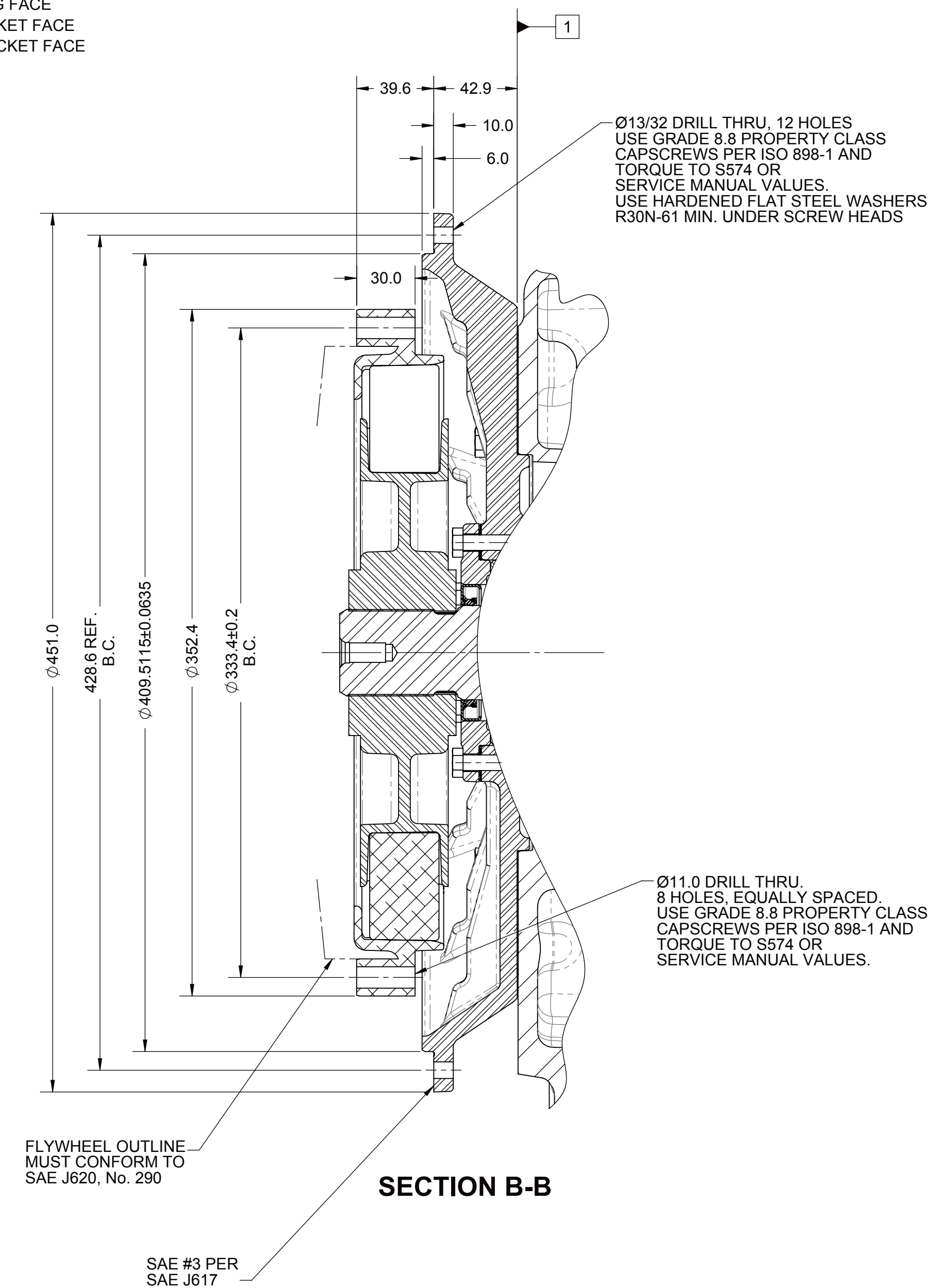
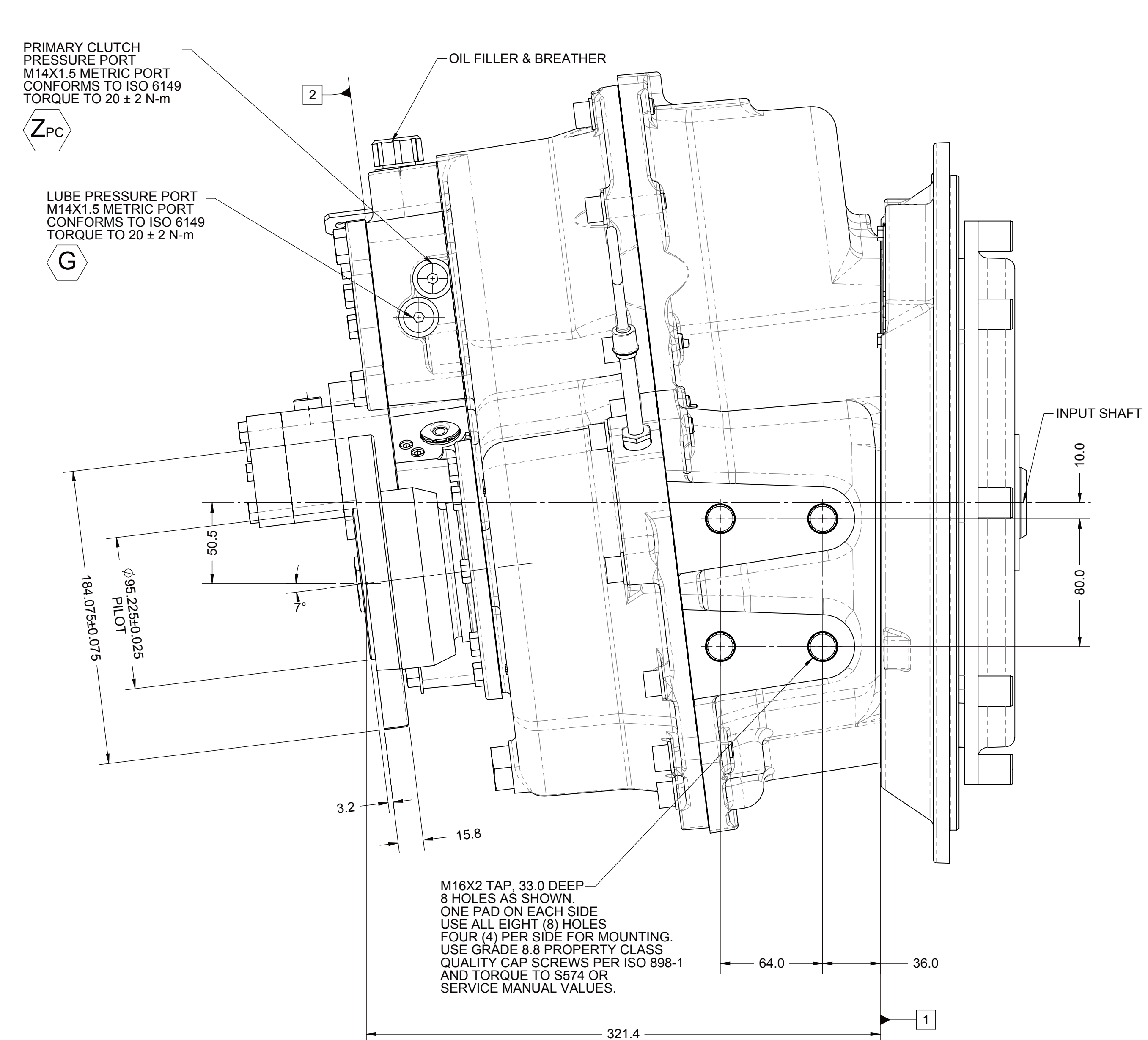
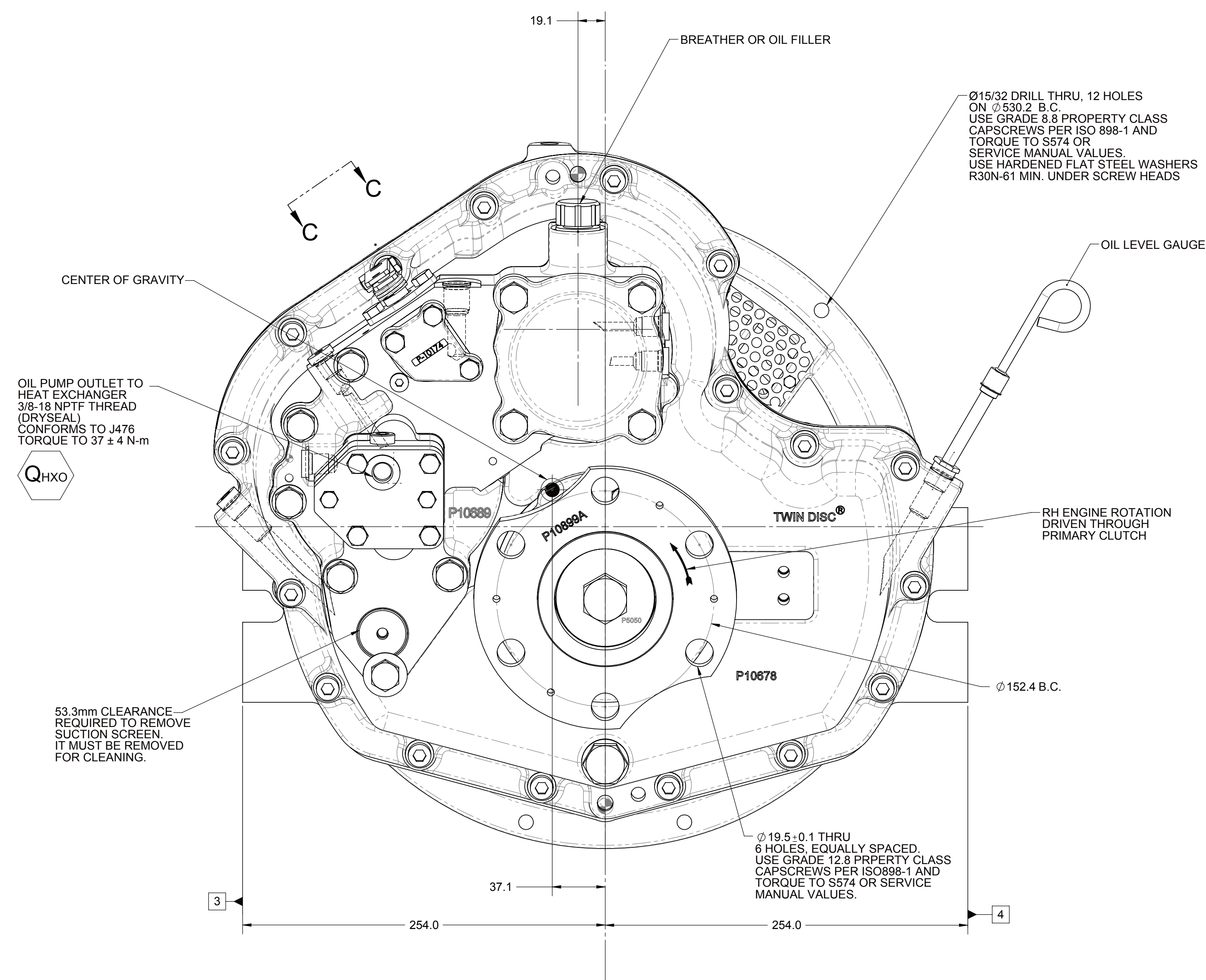
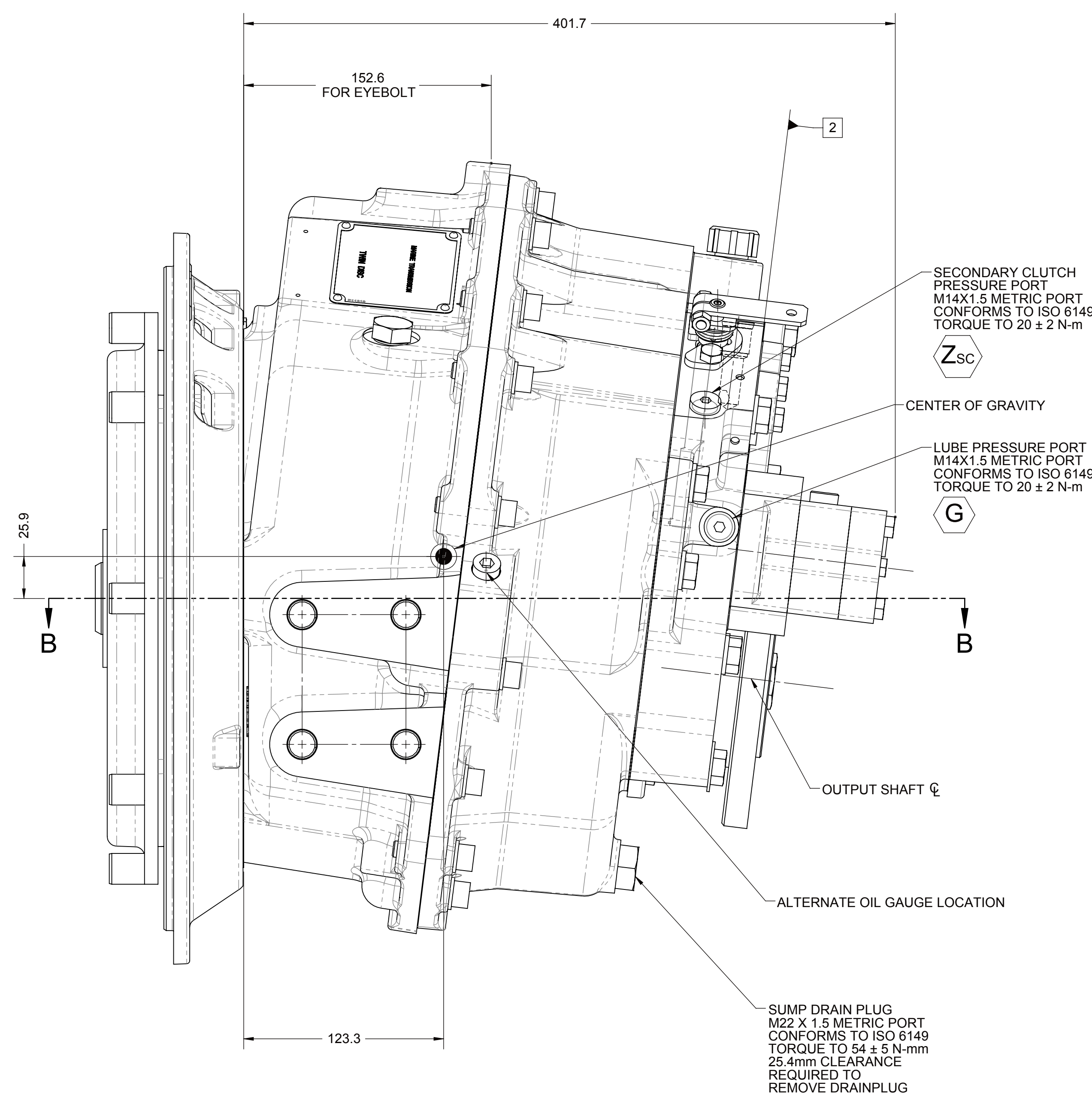


- 1 INPUT GROUP REFERENCE PLANE
- 2 PTO GROUP MOUNTING FACE
- 3 LEFT MOUNTING BRACKET FACE
- 4 RIGHT MOUNTING BRACKET FACE



VIEW C-C




NOTE:

- A. ALL POINTS AVAILABLE FOR TESTING ARE CODED
- B. REFERENCE S930 FOR TWIN DISC REQUIREMENTS FOR PRESSURE AND TEMPERATURE ALARM LEVELS.

EQUIPMENT SHOWN:

- MG-5075A PER PX10700 SERIES
- SAE #3
- SAE 290 CENTA CF-R-178-HR COUPLING
- MECHANICAL CONTROL VALVE
- SAE #4 OUTPUT FLANGE

FIRST USE ASSEMBLY: FX110700		WEEKEND: 125.9%		MATERIAL:		DATE: 05/29/2014	
FIRST USE MODEL: MG-5075A		WEEK: 125.9%		TREAT TREAT:		SCALE: 1/2	
SIMILAR TO:			UNLESS OTHERWISE SPECIFIED MACHINE DIMENSIONS FRACTIONS ALL ANGLES 45° 15° 15° 15° ALL DIMENSIONS TO FACE UNLESS OTHERWISE NOTED PER ASME Y14.5M 1994		DRAWN BY: PM CHECKED BY: ALC APPROVED BY: ALC		
METRIC NOTICE: THIS PRINT CONTAINS PROPRIETARY INFORMATION AND IS NOT TO BE REPRODUCED OR TRANSMITTED IN ANY FORM OR BY ANY MEANS, ELECTRONIC OR MECHANICAL, INCLUDING PHOTOCOPYING, RECORDING, OR BY ANY INFORMATION STORAGE AND RETRIEVAL SYSTEM, WITHOUT THE WRITTEN PERMISSION OF TWIN DISC. THIS INFORMATION IS THE PROPERTY OF TWIN DISC. THIS INFORMATION IS TO BE KEPT CONFIDENTIAL.			DESCRIPTION: INSTALLATION MG-5075A		DWG NO: _____ SIZE: A0 SHEET: 1 OF 1 REV: _____		