

- 1

ENGINE MOUNTING FACE
- 2

PTO GROUP MOUNTING FACE
- 3

LEFT MOUNTING BRACKET FACE
- 4

RIGHT MOUNTING BRACKET FACE
- 5

PUMP MOUNTING FACE

NOTES:

A. MANUAL OVERRIDE VALVE OPERATION

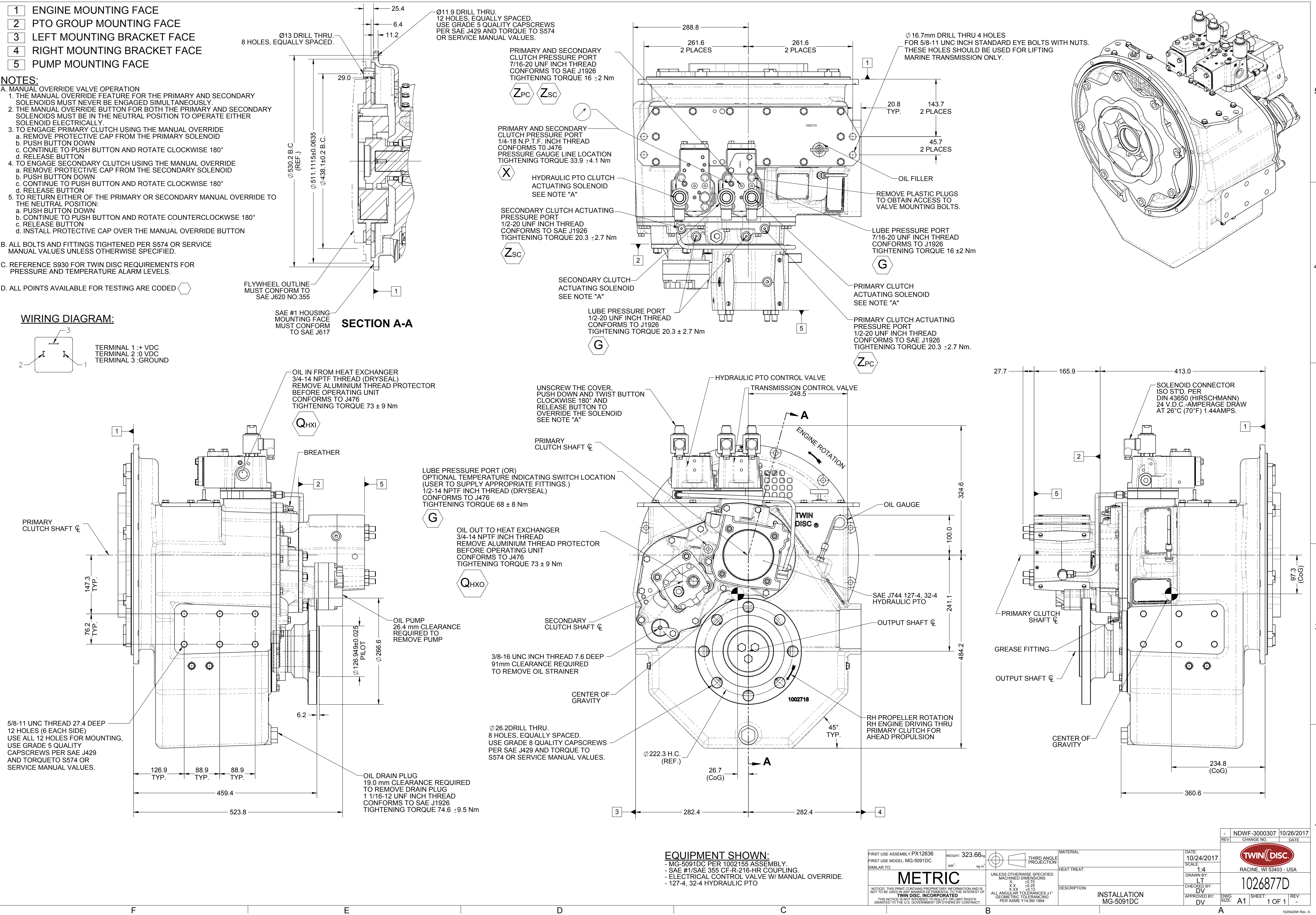
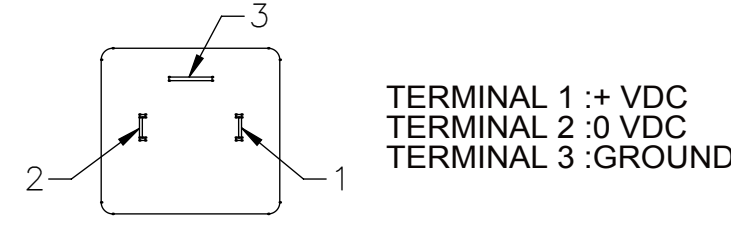
1. THE MANUAL OVERRIDE FEATURE FOR THE PRIMARY AND SECONDARY SOLENOIDS MUST NEVER BE ENGAGED SIMULTANEOUSLY.
2. THE MANUAL OVERRIDE BUTTON FOR BOTH THE PRIMARY AND SECONDARY SOLENOIDS MUST BE IN THE NEUTRAL POSITION TO OPERATE EITHER SOLENOID ELECTRICALLY.
3. TO ENGAGE PRIMARY CLUTCH USING THE MANUAL OVERRIDE
 - a. REMOVE PROTECTIVE CAP FROM THE PRIMARY SOLENOID
 - b. PUSH BUTTON DOWN
 - c. CONTINUE TO PUSH BUTTON AND ROTATE CLOCKWISE 180°
 - d. RELEASE BUTTON
4. TO ENGAGE SECONDARY CLUTCH USING THE MANUAL OVERRIDE
 - a. REMOVE PROTECTIVE CAP FROM THE SECONDARY SOLENOID
 - b. PUSH BUTTON DOWN
 - c. CONTINUE TO PUSH BUTTON AND ROTATE CLOCKWISE 180°
 - d. RELEASE BUTTON
5. TO RETURN EITHER OF THE PRIMARY OR SECONDARY MANUAL OVERRIDE TO THE NEUTRAL POSITION:
 - a. PUSH BUTTON DOWN
 - b. CONTINUE TO PUSH BUTTON AND ROTATE COUNTERCLOCKWISE 180°
 - c. RELEASE BUTTON
 - d. INSTALL PROTECTIVE CAP OVER THE MANUAL OVERRIDE BUTTON

B. ALL BOLTS AND FITTINGS TIGHTENED PER S574 OR SERVICE MANUAL VALUES UNLESS OTHERWISE SPECIFIED.

C. REFERENCE S930 FOR TWIN DISC REQUIREMENTS FOR PRESSURE AND TEMPERATURE ALARM LEVELS.

D. ALL POINTS AVAILABLE FOR TESTING ARE CODED

WIRING DIAGRAM:



EQUIPMENT SHOWN:

- MG-5091DC PER 1002155 ASSEMBLY.
- SAE #1/SAE 355 CF-R-216-HR COUPLING.
- ELECTRICAL CONTROL VALVE W/ MANUAL OVERRIDE.
- 127-4, 32-4 HYDRAULIC PTO

FIRST USE ASSEMBLY: PX12636	WEIGHT: 323.66 _{kg}	THIRD ANGLE PROJECTION	MATERIAL:	DATE: 10/24/2017
FIRST USE MODEL: MG-5091DC	WRT: kg m ³	UNLESS OTHERWISE SPECIFIED MACHINED DIMENSIONS	HEAT TREAT:	SCALE: 1:4
SIMILAR TO:		X X ±0.75		DRAWN BY: LT
		X X ±0.25		CHECKED BY: DV
		X XX ±0.13		APPROVED BY: DV
		ALL ANGULAR TOLERANCES ±1°		DWG SIZE: A1
		GEOMETRIC TOLERANCING PER ASME Y14.5M 1994		SHEET: 1 OF 1
			DESCRIPTION: INSTALLATION MG-5091DC	REV: -

NDWF-3000307

CHANGE NO.

DATE

TWIN DISC

RACINE, WI 53403 - USA

1026877D