

- |   |                             |
|---|-----------------------------|
| 1 | INPUT GROUP REFERENCE PLANE |
| 2 | PTO ADAPTER MOUNTING FACE   |
| 3 | LEFT MOUNTING BRACKET FACE  |
| 4 | RIGHT MOUNTING BRACKET FACE |

NOTES:

A. PROPORTIONAL CONTROL VALVE OPERATION

1. WARNING DO NOT CONNECT VALVE COIL DIRECTLY TO BATTERY/POWER SUPPLY VOLTAGE.
2. OPERATION TO BE PERFORMED WITH ONLY TWIN DISC CONTROL SYSTEMS OR MODULES.

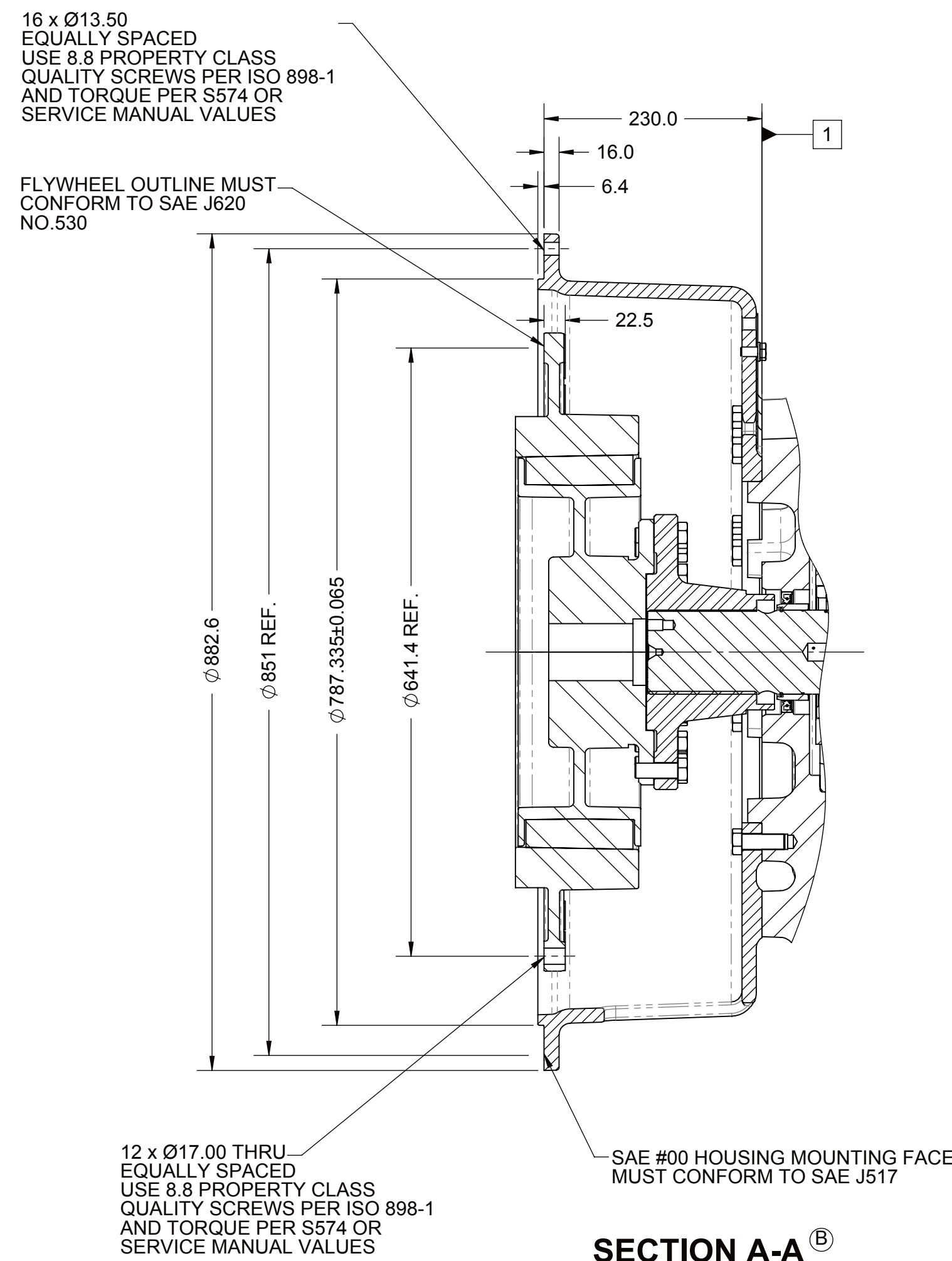
- B. MANUAL DIRECTIONAL CONTROL VALVE OPERATION
  1. WITH MANUAL DIRECTIONAL CONTROL VALVE IN CENTERED POSITION, PUSH TO ENGAGE PRIMARY CLUTCH.
  2. WITH MANUAL DIRECTIONAL CONTROL VALVE IN CENTERED POSITION, PULL TO ENGAGE SECONDARY CLUTCH.

C. MANUAL DIRECTIONAL CONTROL VALVE MODE SWITCH

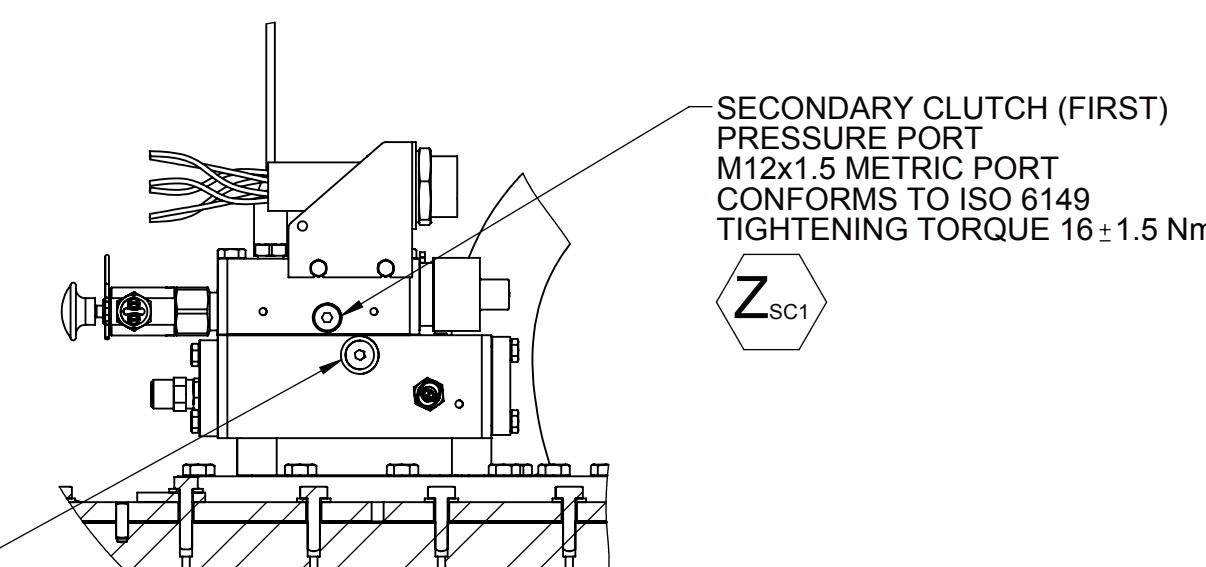
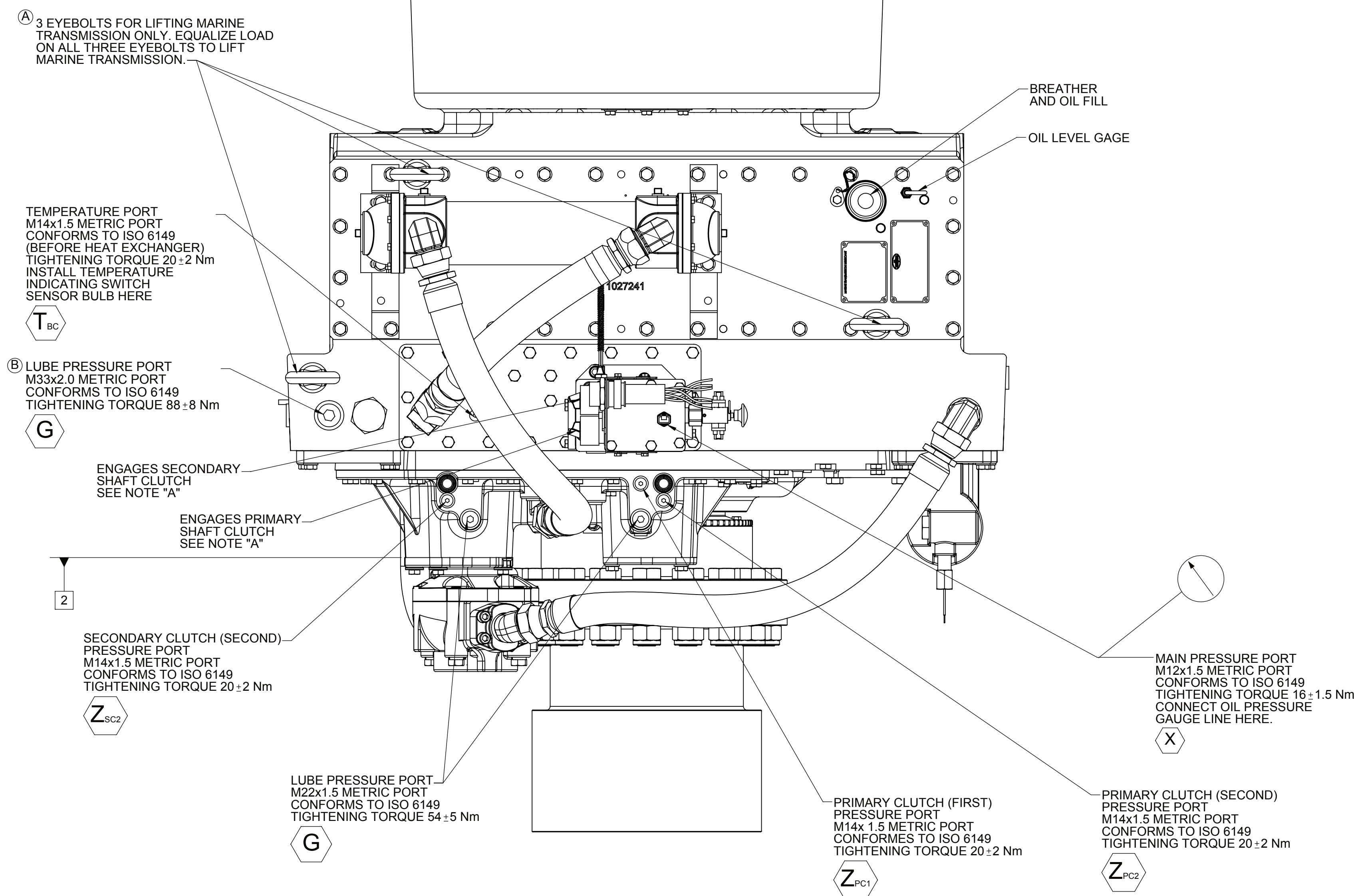
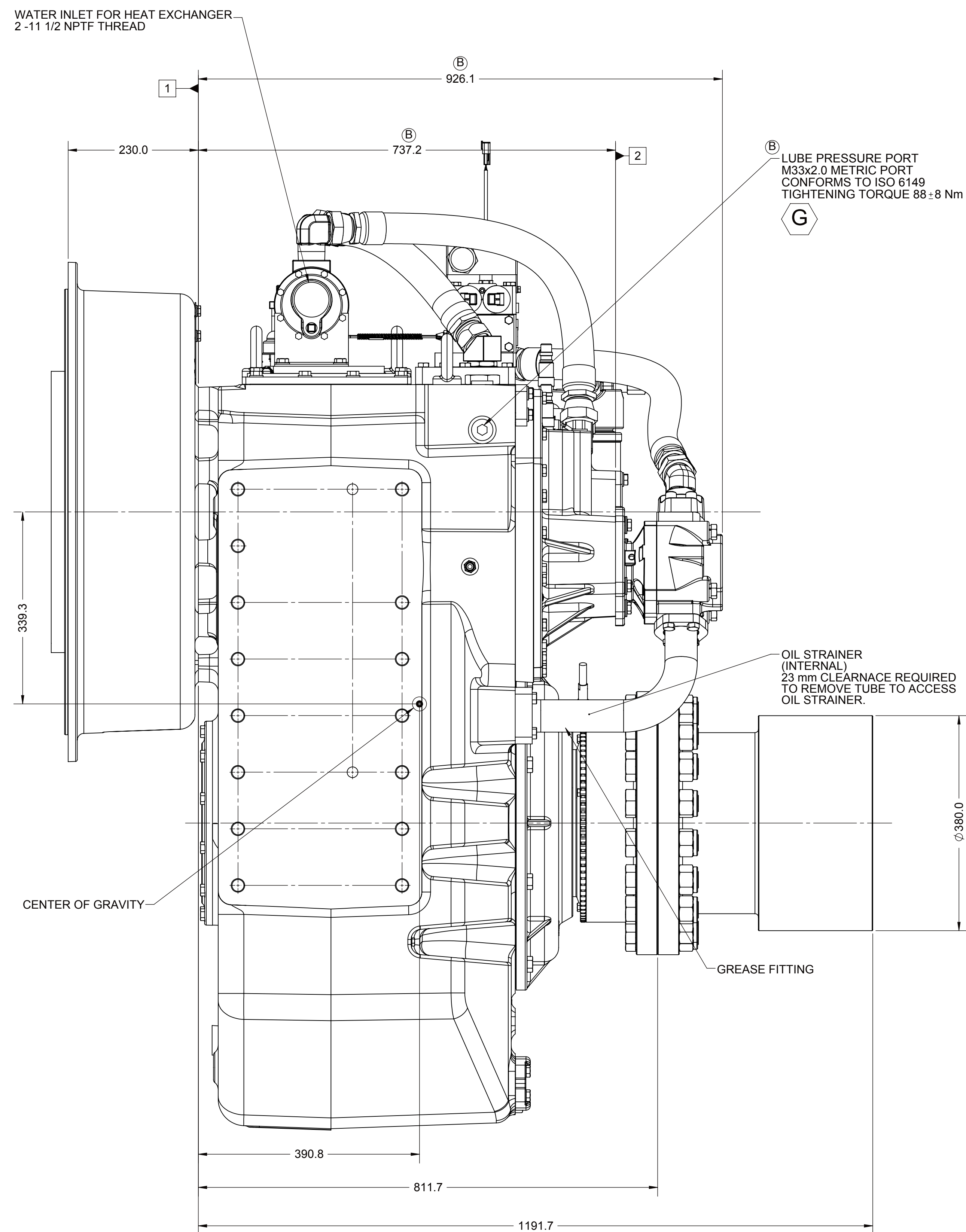
1. SWITCH IS NORMALLY CLOSED WHEN MANUAL DIRECTIONAL CONTROL VALVE IS IN THE CENTERED POSITION AND OPEN WHEN LEVER IS ACTUATED FROM CENTERED POSITION.
2. CURRENT = 20 AMP MAX.
3. FOR WIRING SCHEMATIC, REFER TO CONTROL MODULE DRAWING

ⓑD. ALL POINTS AVAILABLE FOR TESTING ARE CODED 

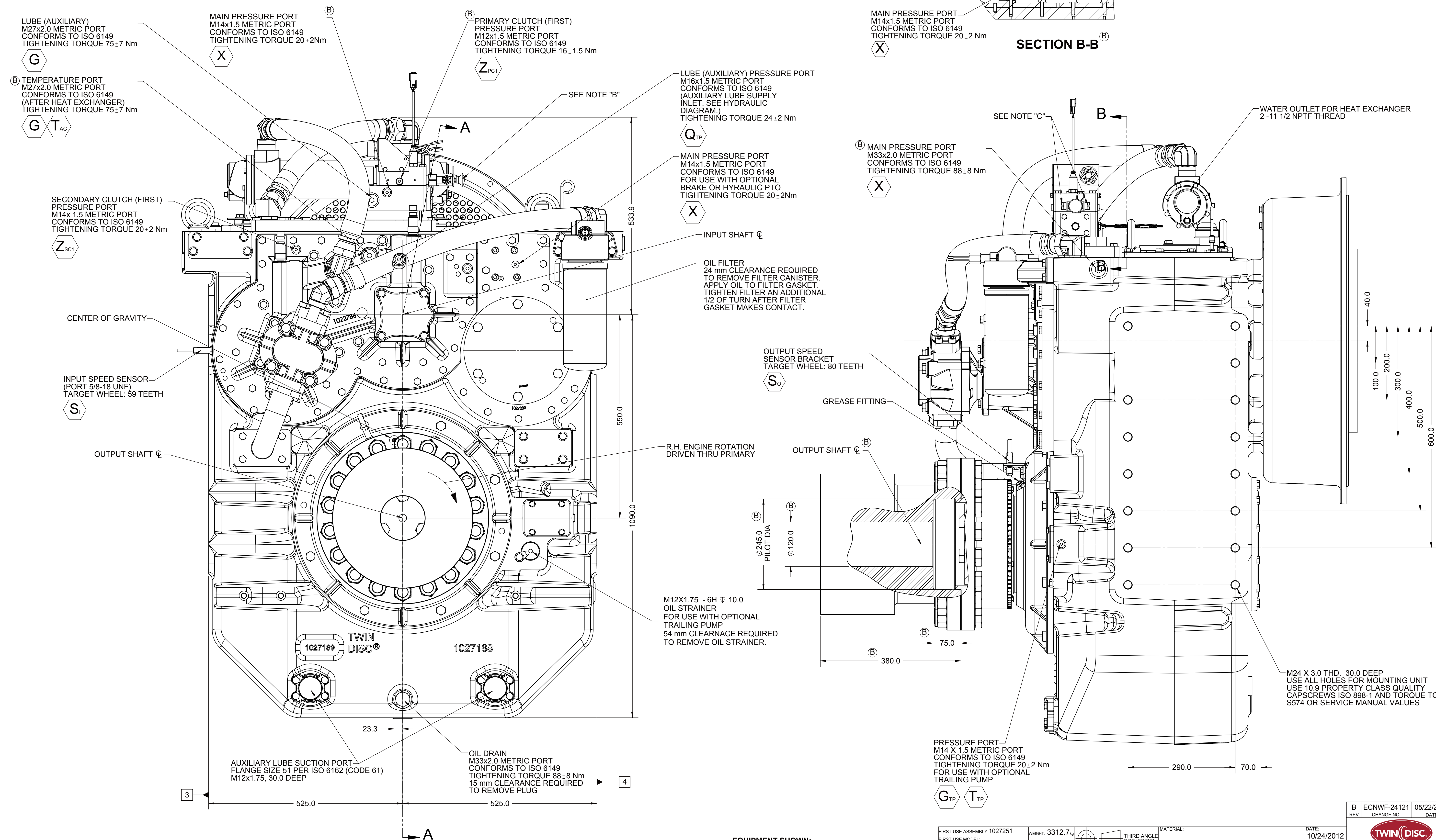
E. REFERENCE S930 FOR TWIN DISC REQUIREMENTS FOR PRESSURE AND TEMPERATURE ALARM LEVELS.





**SECTION A-A** <sup>®</sup>



**SECTION B-B** <sup>(B)</sup>



**EQUIPMENT SHOWN:**  
 - MGX-5600 PER 1027251 ASSEMBLY  
 - SAE #00/SAE 530 CENTA CF-R-520-HR COUPLING  
 - GP VALVE WITH EC300 ADAPTER HARNESS  
 - 1018650 COMPANION FLANGE ASS'Y  
 - M1959AQ MOUNTED HEAT EXCHANGER

FIRST USE ASSEMBLY: 1027251 FIRST USE MODEL: SIMILAR TO:	RECHART: 3312.74  THIRD ANGLE PROJECTION	MATERIAL:  HEAT TREAT:	DATE: 10/24/2012 DRAWN BY: T.J. CHECKED BY: D.M. APPROVED BY: NLC DATED: 10/24/12 SHEET: 1 OF 1 REV: B	 RACINE, WI 53403-1345 <h1>1027247</h1>
<h1>METRIC</h1> <p>           NOTICE: THE FIRST COORDINATE PROPERTY, INFORMATION AND THE SECOND COORDINATE PROPERTY, INFORMATION ARE THE PROPERTY OF THE FIRST COORDINATE PROPERTY, INFORMATION AND THE SECOND COORDINATE PROPERTY, INFORMATION. THE FIRST COORDINATE PROPERTY, INFORMATION AND THE SECOND COORDINATE PROPERTY, INFORMATION ARE THE PROPERTY OF THE FIRST COORDINATE PROPERTY, INFORMATION AND THE SECOND COORDINATE PROPERTY, INFORMATION. THE FIRST COORDINATE PROPERTY, INFORMATION AND THE SECOND COORDINATE PROPERTY, INFORMATION ARE THE PROPERTY OF THE FIRST COORDINATE PROPERTY, INFORMATION AND THE SECOND COORDINATE PROPERTY, INFORMATION.         </p>		UNLESS OTHERWISE SPECIFIED MATERIAL: 303 FINISH: 12-1 K: 12-1 ALUMINUM: 12-1 DESCRIPTION: 12-1 INSTALLATION: 12-1 MGX-5600		