
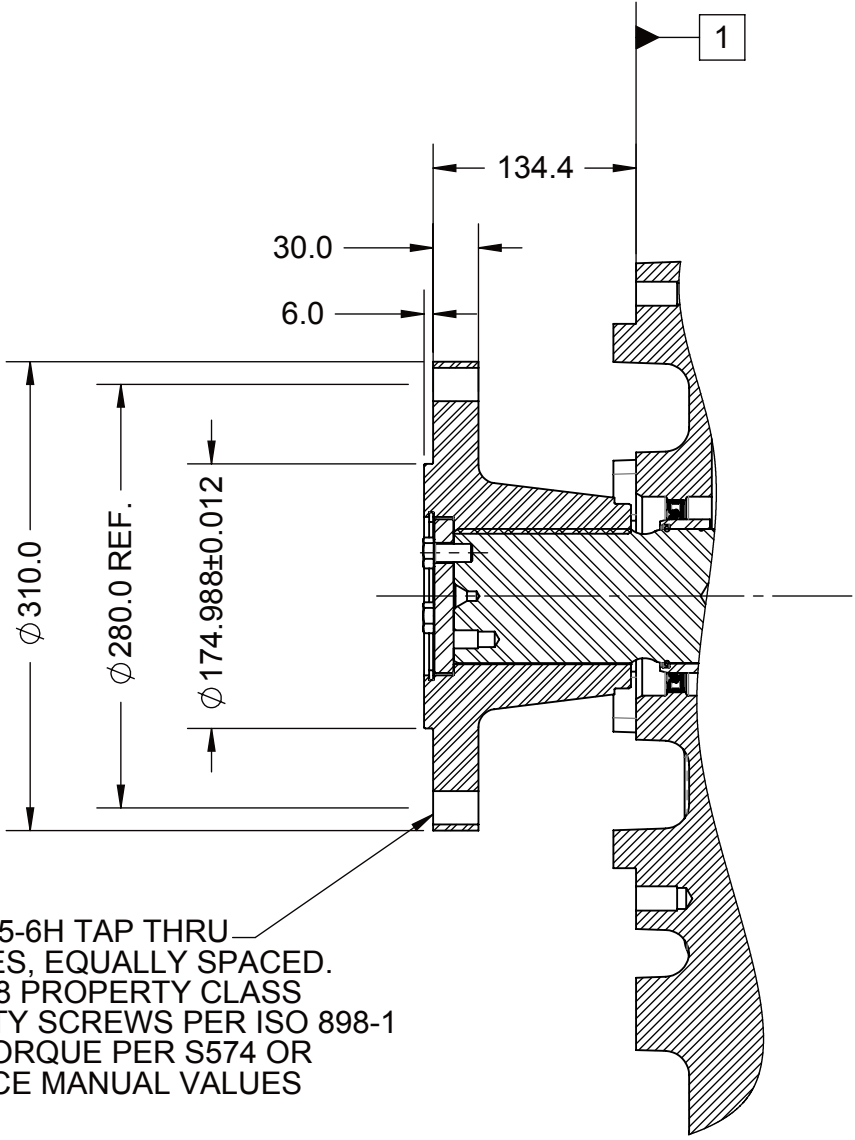


- 1 INPUT GROUP REFERENCE PLANE
2 PTO ADAPTER MOUNTING FACE
3 LEFT MOUNTING BRACKET FACE
4 RIGHT MOUNTING BRACKET FACE

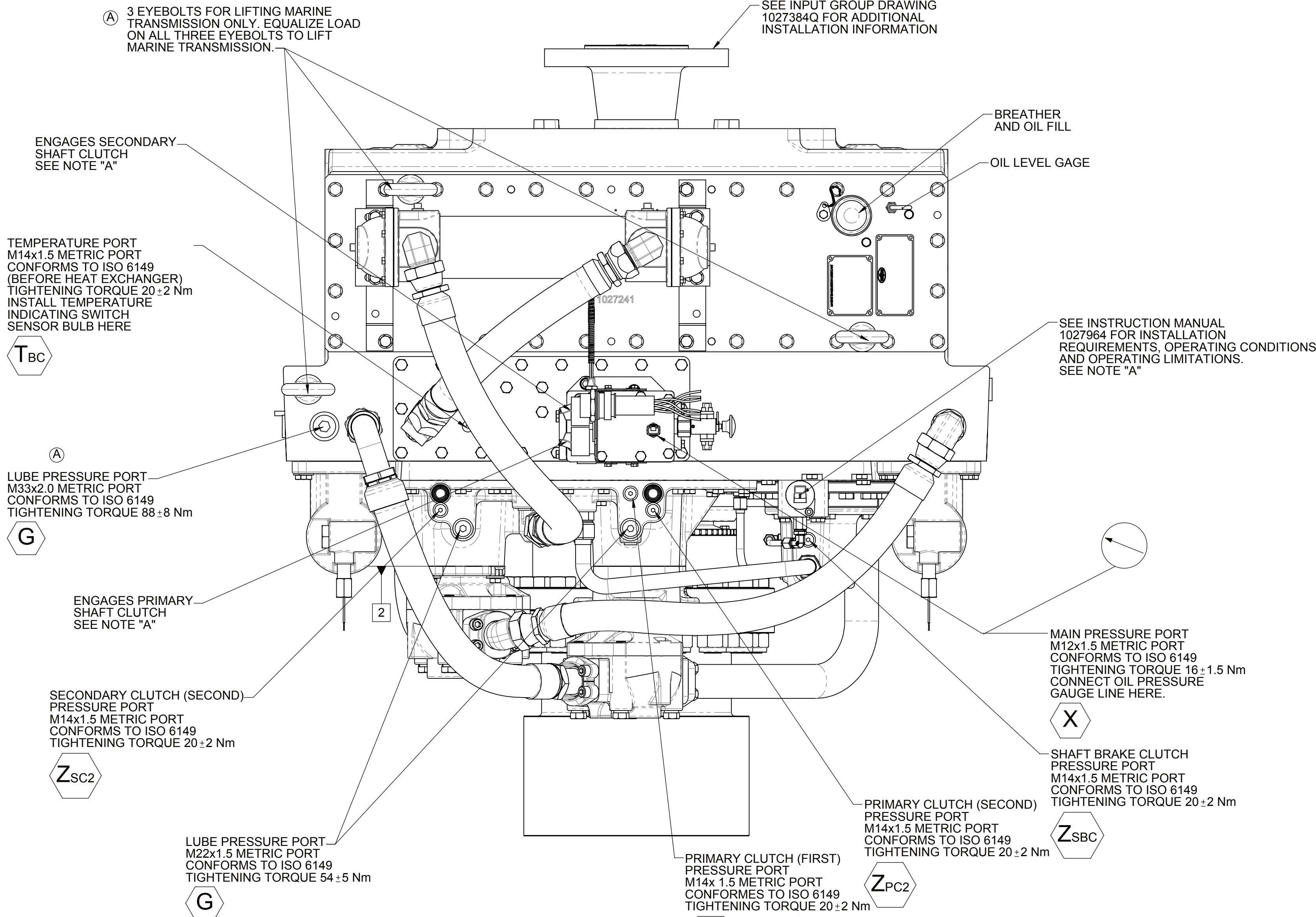
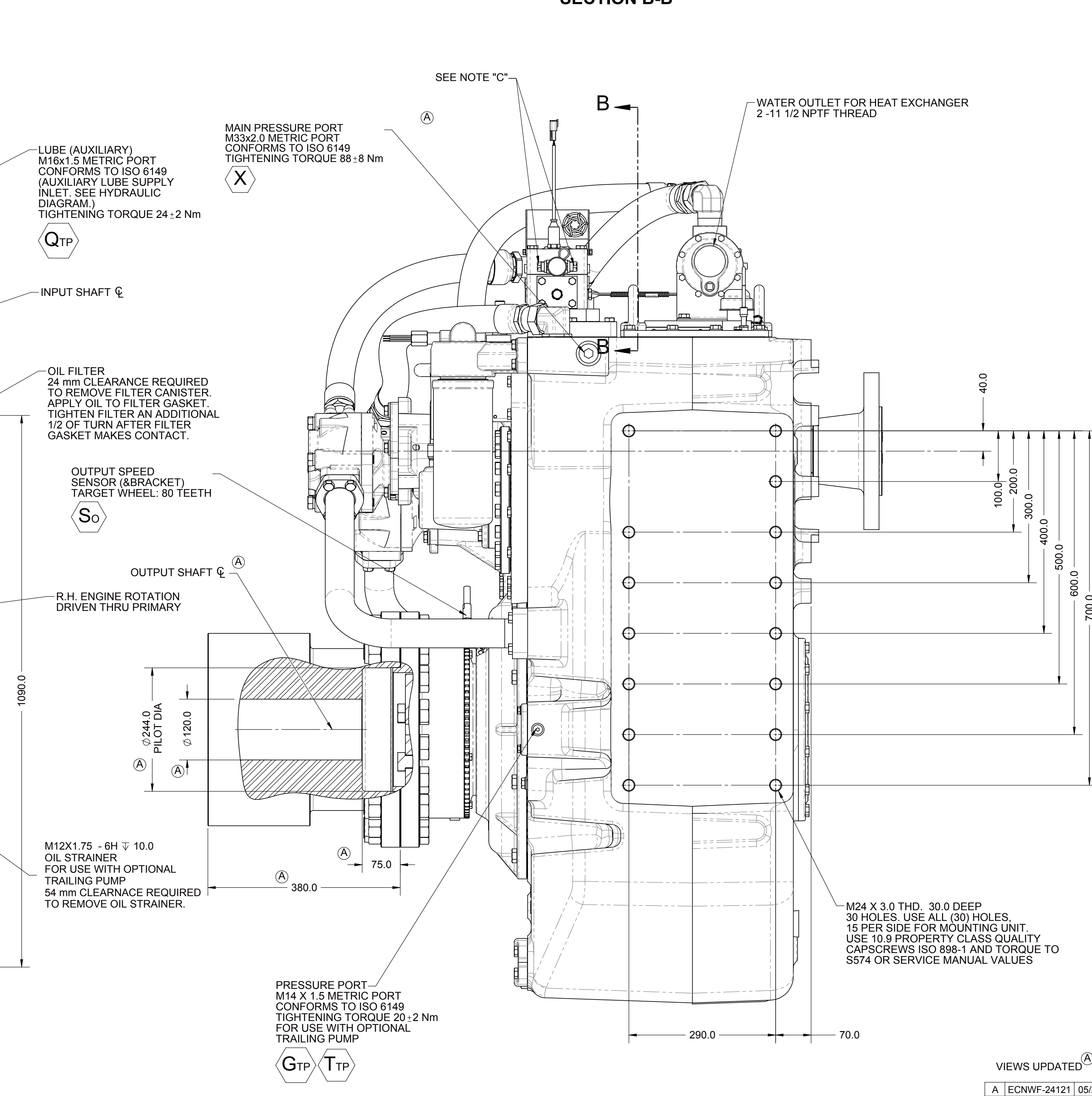
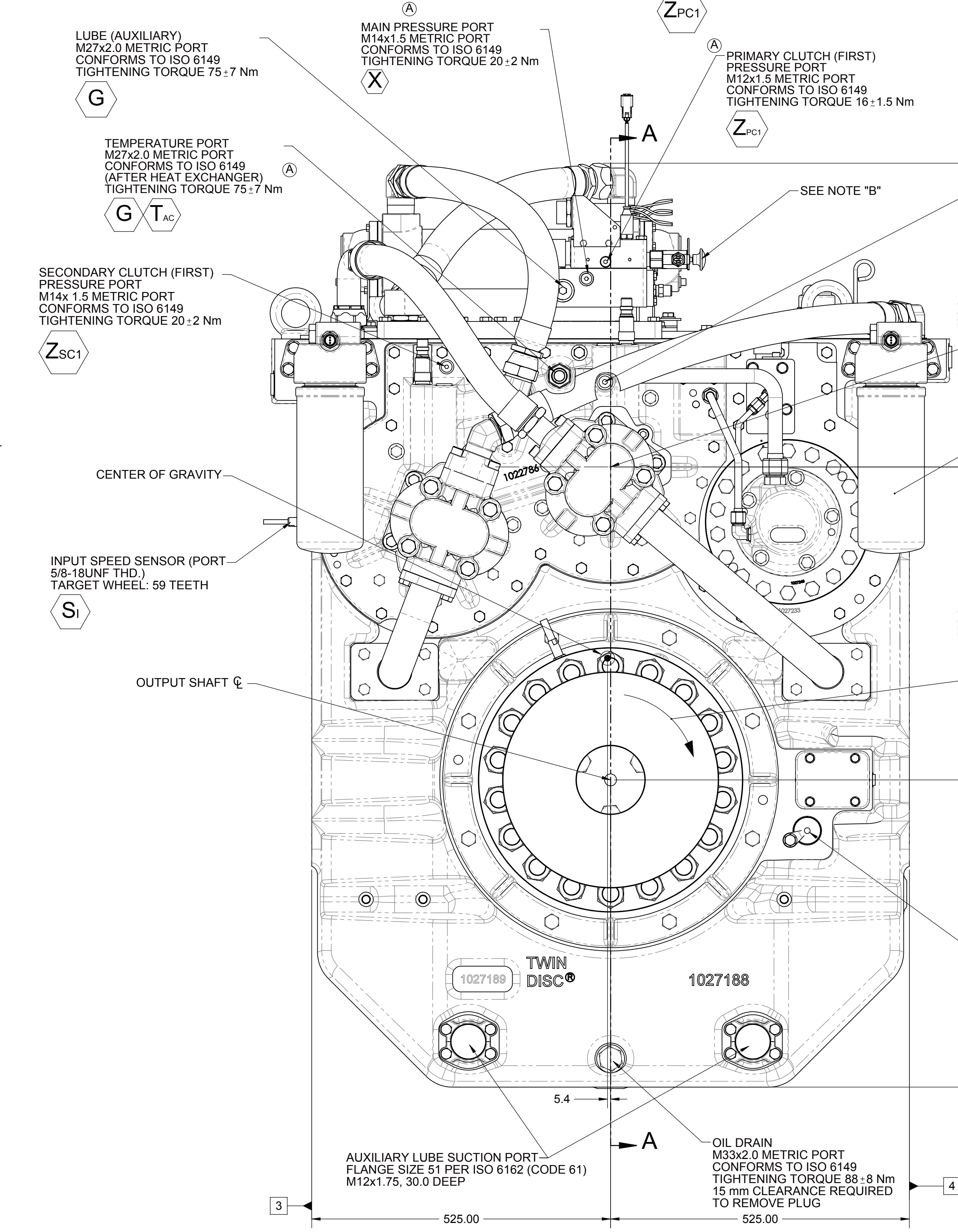
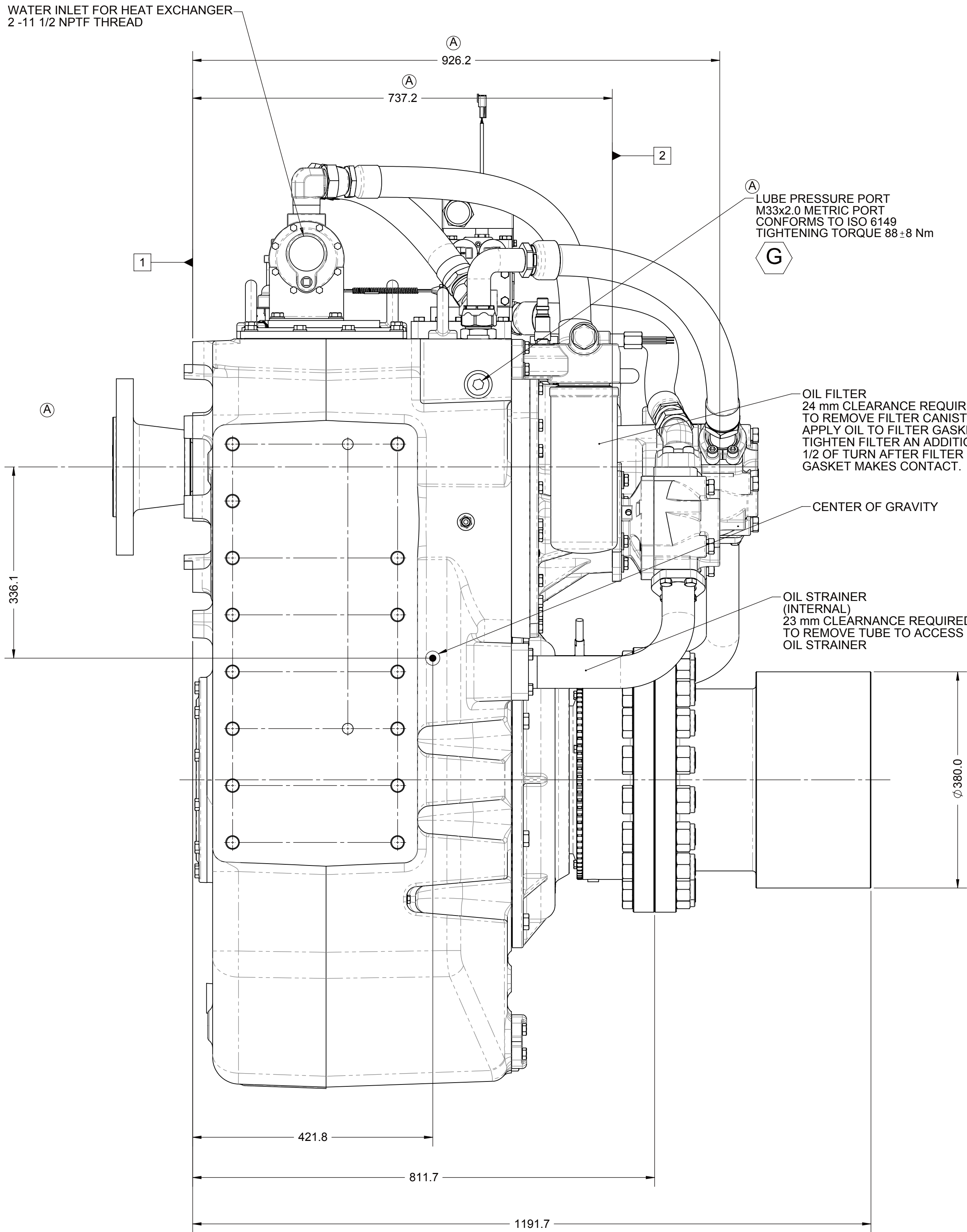
NOTES:

- A. PROPORTIONAL CONTROL VALVE OPERATION
1. WARNING DO NOT CONNECT VALVE COIL DIRECTLY TO BATTERY/POWER SUPPLY VOLTAGE.
2. OPERATION TO BE PERFORMED WITH ONLY TWIN DISC CONTROL SYSTEMS OR MODULES.
B. MANUAL DIRECTIONAL CONTROL VALVE OPERATION
1. WITH MANUAL DIRECTIONAL CONTROL VALVE IN CENTERED POSITION, PUSH TO ENGAGE PRIMARY CLUTCH.
2. WITH MANUAL DIRECTIONAL CONTROL VALVE IN CENTERED POSITION, PULL TO ENGAGE SECONDARY CLUTCH.
C. MANUAL DIRECTIONAL CONTROL VALVE MODE SWITCH
1. SWITCH IS NORMALLY CLOSED WHEN MANUAL DIRECTIONAL CONTROL VALVE IS IN THE CENTERED POSITION AND OPEN WHEN LEVER IS ACTUATED FROM CENTERED POSITION.
2. CURRENT = 20 AMP MAX.
3. FOR WIRING SCHEMATIC, REFER TO CONTROL MODULE DRAWING.

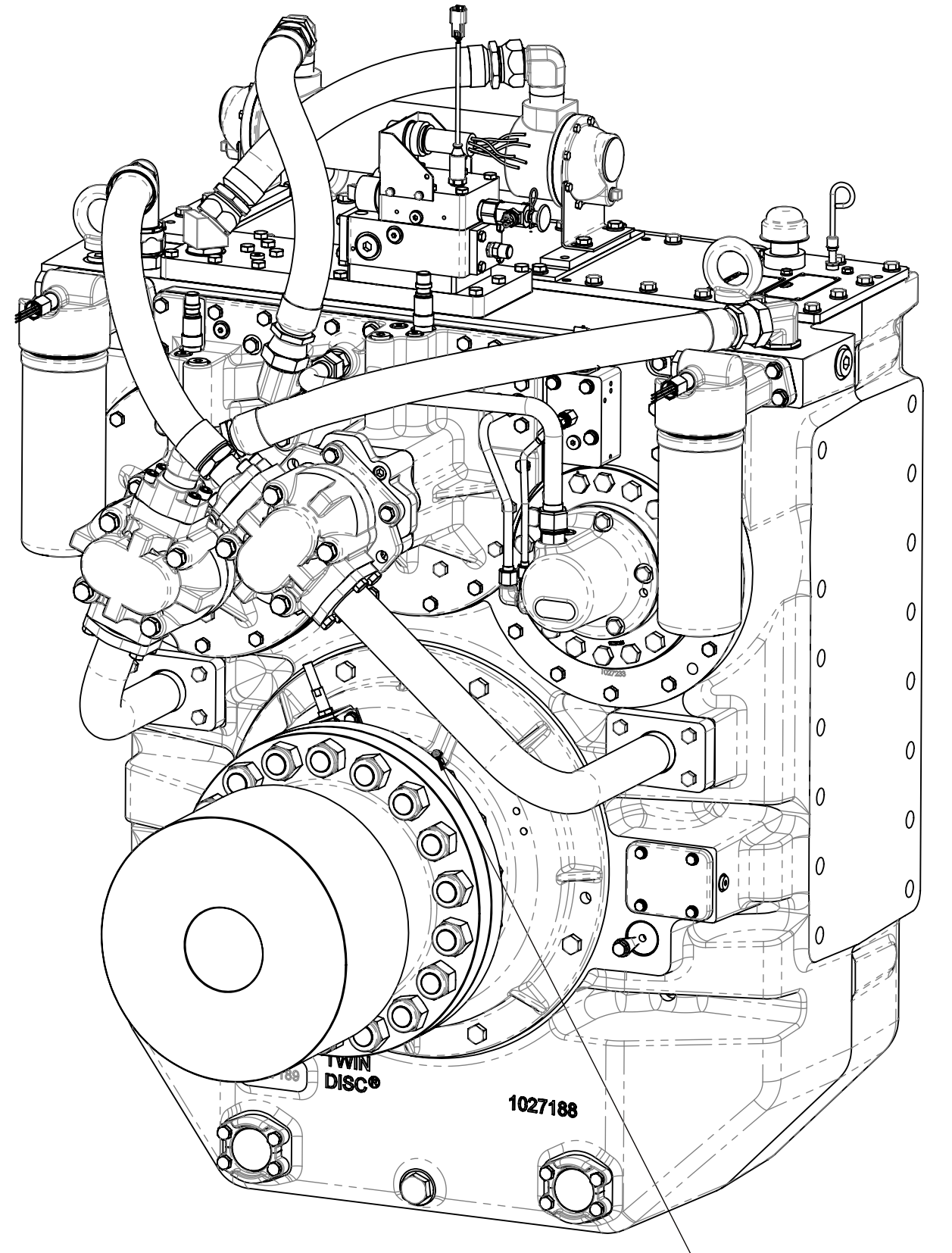
- A. ALL POINTS AVAILABLE FOR TESTING ARE CODED .
E. REFERENCE S930 FOR TWIN DISC REQUIREMENTS FOR PRESSURE AND TEMPERATURE ALARM LEVELS.





SECTION A-A



SECTION B-B



EQUIPMENT SHOWN:
- MGX-5600 PER 1027251 ASSEMBLY
- 1017552 FREE STANDING INPUT FLANGE
- GP VALVE WITH EC300 ADAPTER HARNESS
- 1018550 COMPANION FLANGE ASSY
- M1959AQ MOUNTED HEAT EXCHANGER
- 1027227 INTERNAL SHAFT BRAKE GROUP

FIRST USE ASSEMBLY: FIRST USE MODEL: SIMILAR TO:	WEIGHT: 3397.4 lb kg		THIRD ANGLE PROJECTION	MATERIAL: HEAT TREAT:	DATE: 03/08/2013		SCALE: 1:5		RACINE, WI 53405 - USA	
METRIC				DESCRIPTION:	INSTALLATION					
NOTICE: THIS PRINT CONTAINS PROPRIETARY INFORMATION AND IS NOT TO BE REPRODUCED OR TRANSMITTED IN ANY FORM OR BY ANY MEANS, ELECTRONIC OR MECHANICAL, INCLUDING PHOTOCOPYING, RECORDING, OR BY ANY INFORMATION STORAGE AND RETRIEVAL SYSTEM. THIS NOTICE IS TO BE REPRODUCED ON THE FIRST SHEET OF EACH DRAWING.				TWIN DISC, INCORPORATED						
UNLESS OTHERWISE SPECIFIED MACHINED DIMENSIONS ± 0.125 X.X ± 0.005 X.XX ± 0.0005 ALL GEOMETRIC TOLERANCES SHALL BE TO THE MAXIMUM PERMISSIBLE				DRAWN BY: MG CHECKED BY: ALC APPROVED BY: DWG SHEET: 1 OF 1						
				REV: 00						

VIEWS UPDATED

REV	CHANGE NO	DATE
A	ECNWF-24121	05/27/2014



RACINE, WI 53403 - USA
1027247D