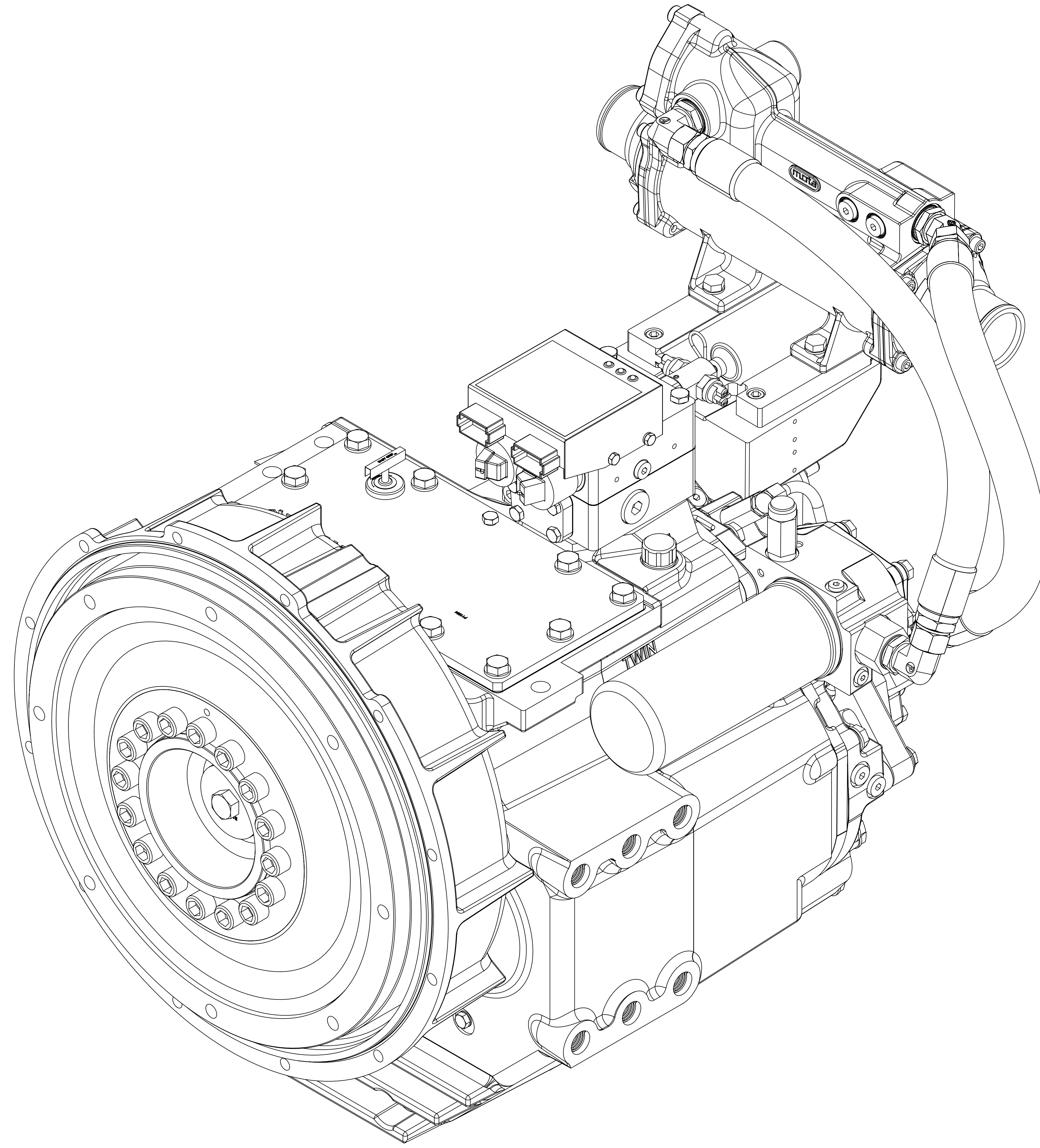


TECHNICAL SPECIFICATIONS:

- CONSULT MARINE TRANSMISSION OPERATOR'S MANUAL P/N 1016313 FOR ADDITIONAL INFORMATION AND IMPORTANT PRECAUTION AND SAFETY STATEMENTS.
- MAXIMUM TRANSMISSION INPUT SPEED : 2800 RPM
- OIL TYPE :
S.A.E. 30W FOR STEADY OPERATION BETWEEN 65°-85° C
S.A.E. 40W FOR STEADY OPERATION BETWEEN 80°-99° C
- OIL CAPACITY : 15.1 L (LESS HOSES AND HEAT EXCHANGER).
- REFER TO S570DW FOR REQUIRED PRESSURES.
- ENGINE SPEED MUST BE REDUCED BELOW 60% OF THE MAXIMUM APPLIED ENGINE SPEED FOR NEUTRAL TO CLUTCH ENGAGEMENT SHIFT AND BELOW 45% OF MAXIMUM APPLIED ENGINE SPEED FOR ENGAGEMENT THRU NEUTRAL TO OPPOSITE CLUTCH SHIFT.
- MAXIMUM TRANSMISSION INPUT SPEED WHILE TROLLING IS 1100 RPM OR 60% OF RATED SPEED, WHICHEVER IS SMALLER.
- TRANSMISSION BACKDRIVING IS LIMITED TO A MAXIMUM SUMP OIL TEMPERATURE OF 100° C.
- CHANGE OIL AND FILTER EVERY 1000 HOURS OR 6 MONTHS (WHICH EVER COMES FIRST). CLEAN PUMP SUCTION SCREEN DURING OIL CHANGE.
- HYDRAULIC SYSTEM DIAGRAM: A7119BF
- TRANSMISSION MASS ELASTIC DATA : B3504BR
- ⓐ - HEAT EXCHANGER REQUIREMENTS : B3649S
- INSTALLATION DRAWING: 1027608 SERIES

GEAR RATIOS:

- 2.90:1
- 2.57:1
- 2.04:1
- 1.73:1
- 1.48:1
- 1.28:1
- 1.10:1
- 1.00:1

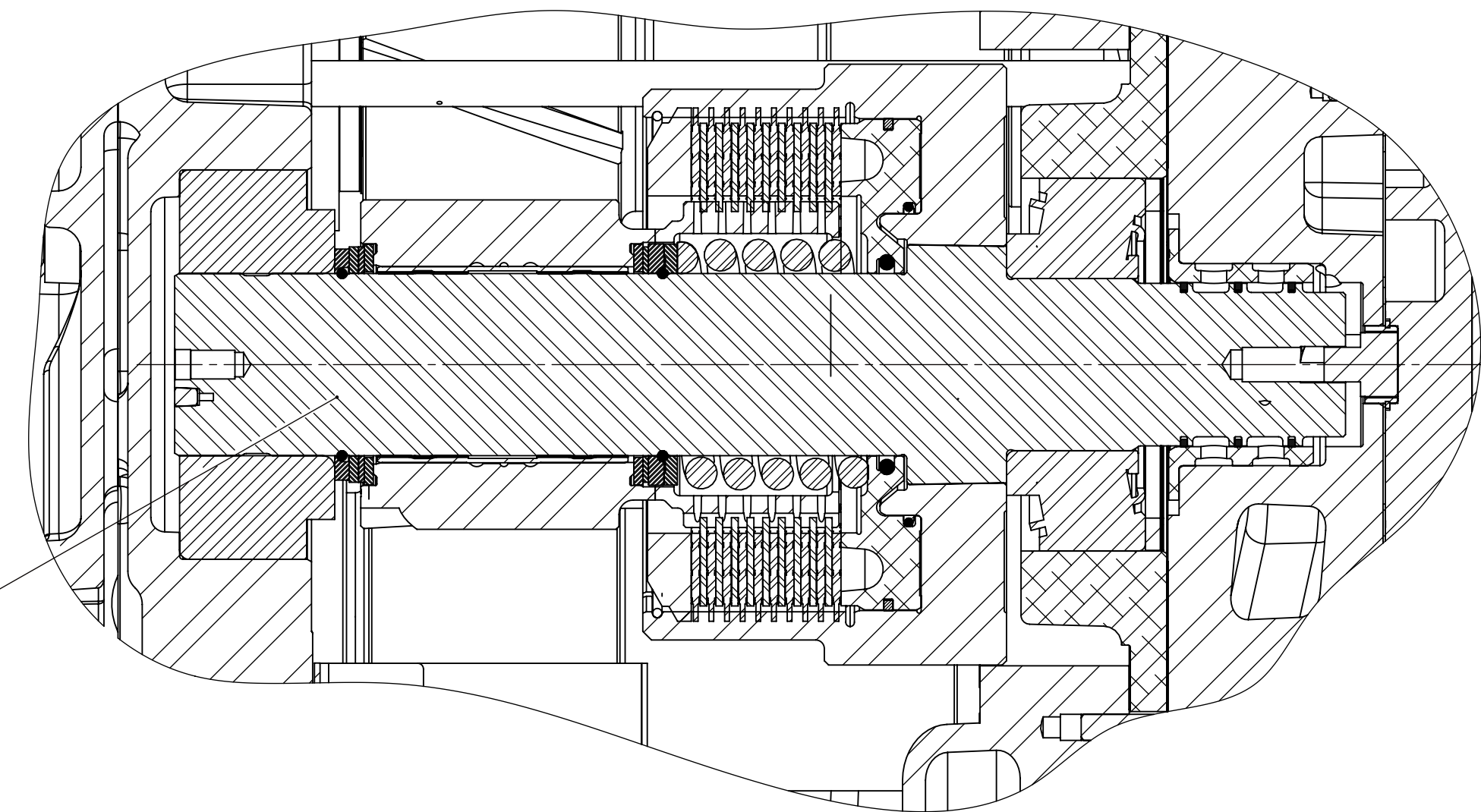


ASSEMBLY INSTRUCTIONS:
 - SEE S570DW SECTION I, FOR INSTRUCTIONS.
 - REFERENCE S570DW FOR ADDITIONAL STANDARDS AND INSTRUCTIONS THAT MAY APPLY.
 - ALL FASTENERS, FITTINGS AND PLUGS TO BE TORQUED PER S574.

FIRST USE ASSEMBLY: FIRST USE MODEL: SIMILAR TO:		WEIGHT: NO.:	THIRD ANGLE PROJECTION	MATERIAL:	DATE: 09/21/2012	SCALE: 1:2	DRIVEN BY: YU	CHECKED BY: JMF	APPROVED BY: ALC	REVISIONS: REV. CHANGE NO. DATE	B ECONWF-25486 08/17/2016
METRIC		UNLESS OTHERWISE SPECIFIED: X.X .15 (2) X.XX .15 (3) X.XXX .15 (4) ALL ANGLES TOLERANCES ±1° GEOMETRIC TOLERANCING REFERENCE: 14.000.1994		HEAT TREAT:							TWIN(DISC) RACINE, WI 53403 - USA
NOTES: THIS PRINT CONTAINS PROPRIETARY INFORMATION AND IS NOT TO BE REPRODUCED OR TRANSMITTED IN ANY FORM OR BY ANY MEANS, ELECTRONIC OR MECHANICAL, INCLUDING PHOTOCOPYING, RECORDING, OR BY ANY INFORMATION STORAGE AND RETRIEVAL SYSTEM, WITHOUT THE WRITTEN PERMISSION OF TWIN DISC, INCORPORATED.		DESCRIPTION: MARINE TRANS MGX-5136SC		DRAWN BY: YU		CHECKED BY: JMF		APPROVED BY: ALC		SHEET: A0 B 1 OF 2	

SECONDARY SHAFT GROUP

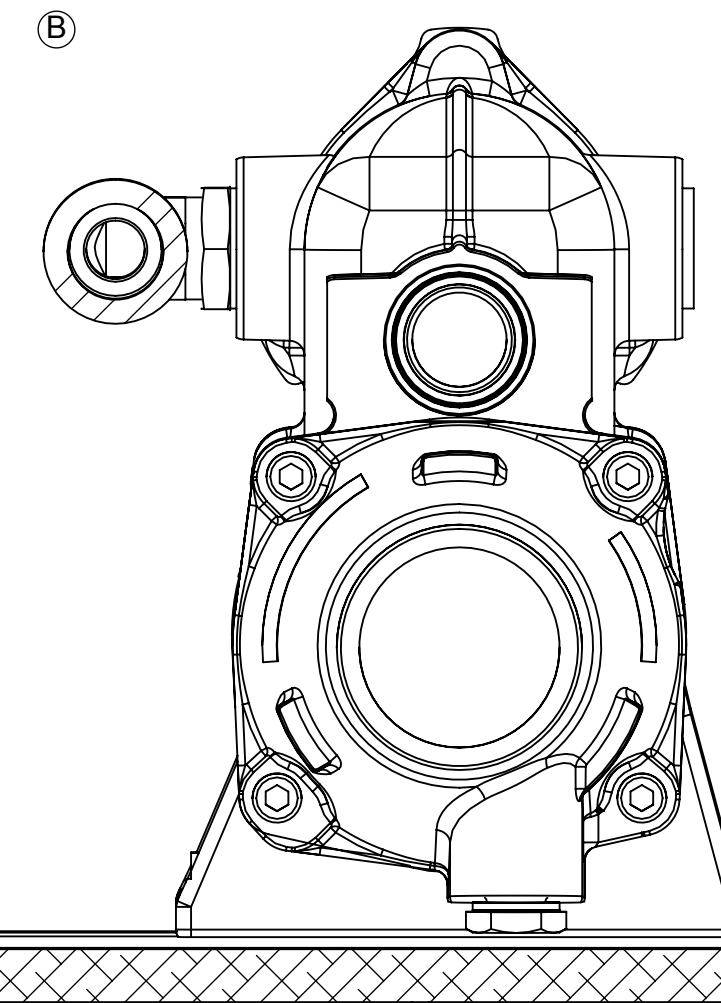
- 2.90:1 RATIO, 21T, 1026084
- 2.57:1 RATIO, 23T, 1027321
- 2.04:1 RATIO, 27T, 1027324
- 1.73:1 RATIO, 30T, 1027327
- 1.48:1 RATIO, 33T, 1027330
- 1.28:1 RATIO, 36T, 1027333
- 1.10:1 RATIO, 39T, 1027336
- 1.00:1 RATIO, 41T, 1027339



SECTION B-B

CONTROL VALVE GROUP

- GP VALVE W/ EC050 PROFILE MODULE - 1025674
- GP VALVE W/ EC050 E-TROLL MODULE - 1025673
- GP VALVE W/ EC300 ADAPTER HARNESS - 1025691
- GP VALVE W/ EC300 ADAPTER HARNESS AND PRESSURE SENSOR - PX1030249

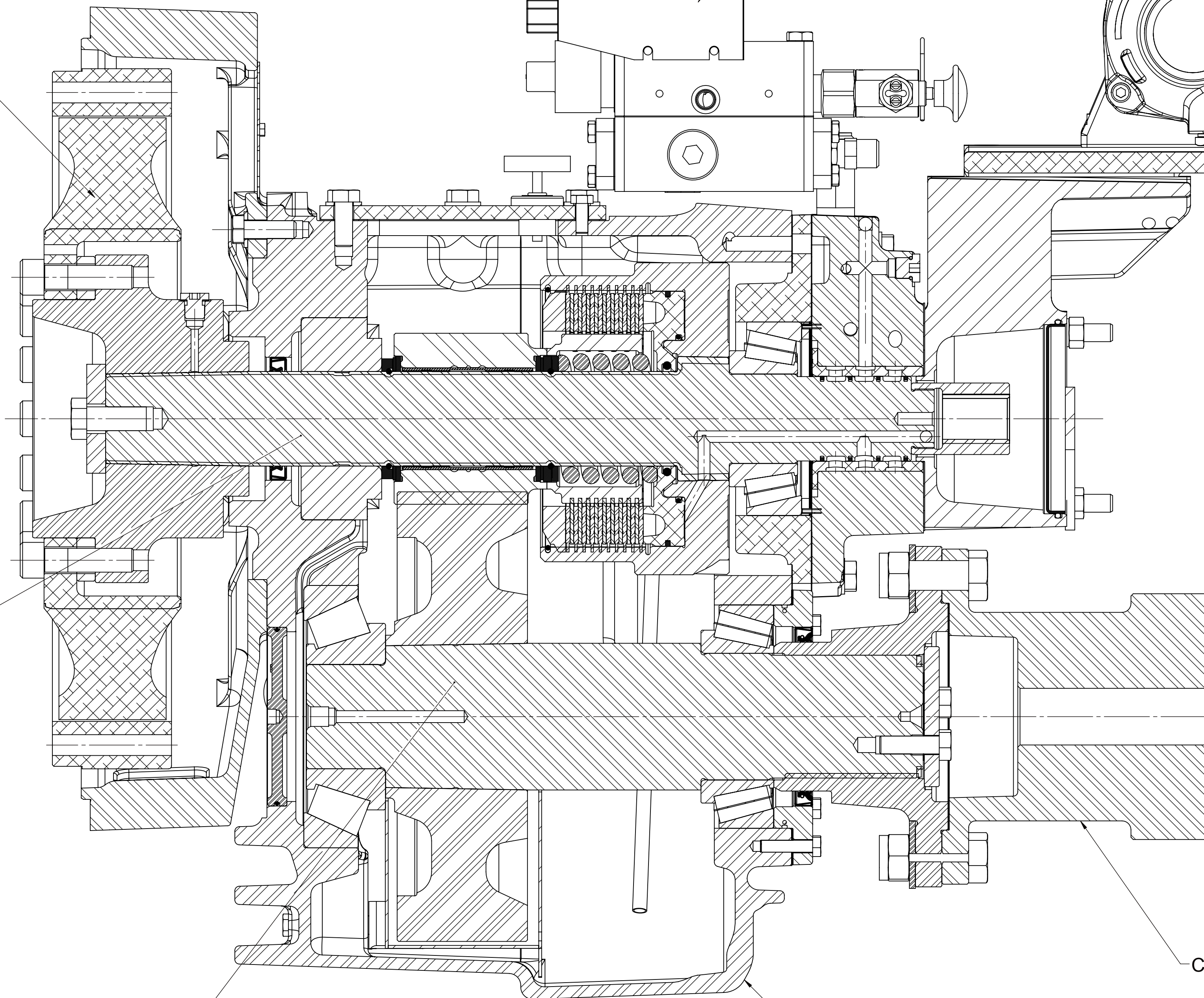


INPUT GROUP

- SEE PRODUCT LIST FOR OPTIONS

PRIMARY SHAFT GROUP

- 2.90:1 RATIO, 21T, 1026083
- 2.57:1 RATIO, 23T, 1027320
- 2.04:1 RATIO, 27T, 1027323
- 1.73:1 RATIO, 30T, 1027326
- 1.48:1 RATIO, 33T, 1027329
- 1.28:1 RATIO, 36T, 1027332
- 1.10:1 RATIO, 39T, 1027335
- 1.00:1 RATIO, 41T, 1027338



SECTION A-A

HOUSING GROUP

- STANDARD, 1027667

OUTPUT SHAFT GROUP

- 2.90:1 RATIO, 61T, 1026085
- 2.57:1 RATIO, 59T, 1027322
- 2.04:1 RATIO, 55T, 1027325
- 1.73:1 RATIO, 52T, 1027328
- 1.48:1 RATIO, 49T, 1027331
- 1.28:1 RATIO, 46T, 1027334
- 1.10:1 RATIO, 43T, 1027337
- 1.00:1 RATIO, 41T, 1027340

COMPANION FLANGE GROUP

- STANDARD - PX11654
- LESS COMPANION FLANGE

MONITORING GROUP

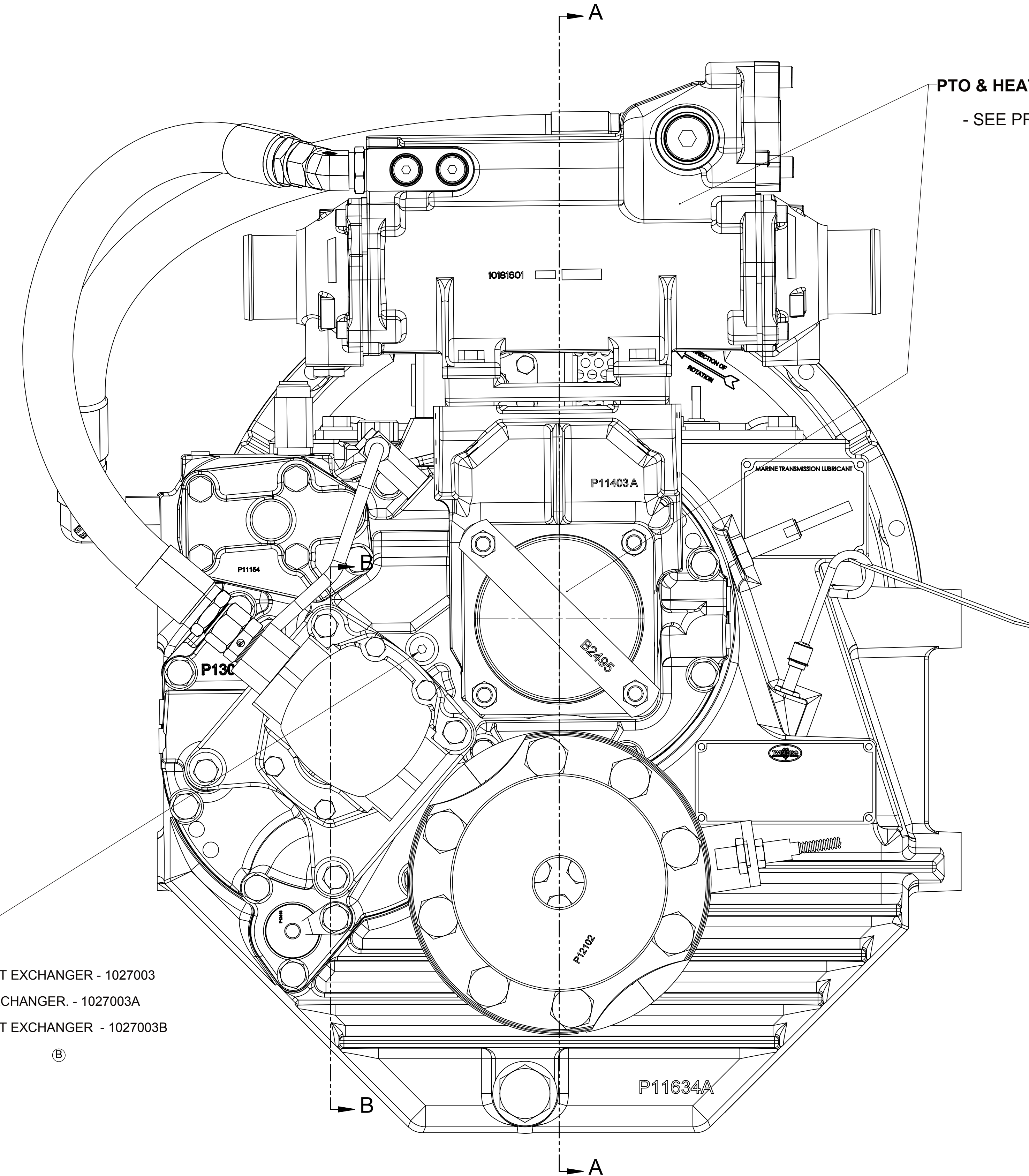
- LESS MONITORING WITHOUT HEAT EXCHANGER - 1027003
- LESS MONITORING WITH HEAT EXCHANGER - 1027003A
- LESS MONITORING WITHOUT HEAT EXCHANGER - 1027003B

MOUNTING BRACKETS

- "MAN" TYPE - 1016428BF
- STANDARD - 1016428AV

PTO & HEAT EXCHANGER OPTION

- SEE PRODUCT LIST FOR OPTIONS



ASSEMBLY INSTRUCTIONS:

- SEE S570DW SECTION I FOR INSTRUCTIONS.
- REFERENCE S570DW FOR ADDITIONAL STANDARDS AND INSTRUCTIONS THAT MAY APPLY.
- ALL FASTENERS, FITTINGS AND PLUGS TO BE TORQUED PER S574.

FIRST USE ASSEMBLY		WEIGHT	THIRD ANGLE PROJECTION	MATERIAL	DATE
FIRST USE MODEL		UNIT	SCALE	HEAT TREAT	09/21/2012
SIMILAR TO		UNLESS OTHERWISE SPECIFIED	AS SHOWN		
METRIC		ALL ANGLES UNLESS OTHERWISE SPECIFIED			
NOTES: THIS PRINT CONTAINS PROPRIETARY INFORMATION AND IS NOT TO BE REPRODUCED OR TRANSMITTED IN ANY FORM OR BY ANY MEANS, ELECTRONIC OR MECHANICAL, INCLUDING PHOTOCOPYING, RECORDING, OR BY ANY INFORMATION STORAGE AND RETRIEVAL SYSTEM.		TWIN DISC, INCORPORATED		DESCRIPTION: MARINE TRANS MGX-5136SC	
APPROVED BY: ALC		DRAWN BY: YU		TWIN DISC, INC. RACINE, WI 53403 - USA	
CHECKED BY: JMF		DATE: 09/21/2012		1027445	
DESIGNED BY: ALC		SCALE: 1:2		SHEET: 2 OF 2	
DATE: 08/17/2016		REV: CHANGE NO.		DATE	