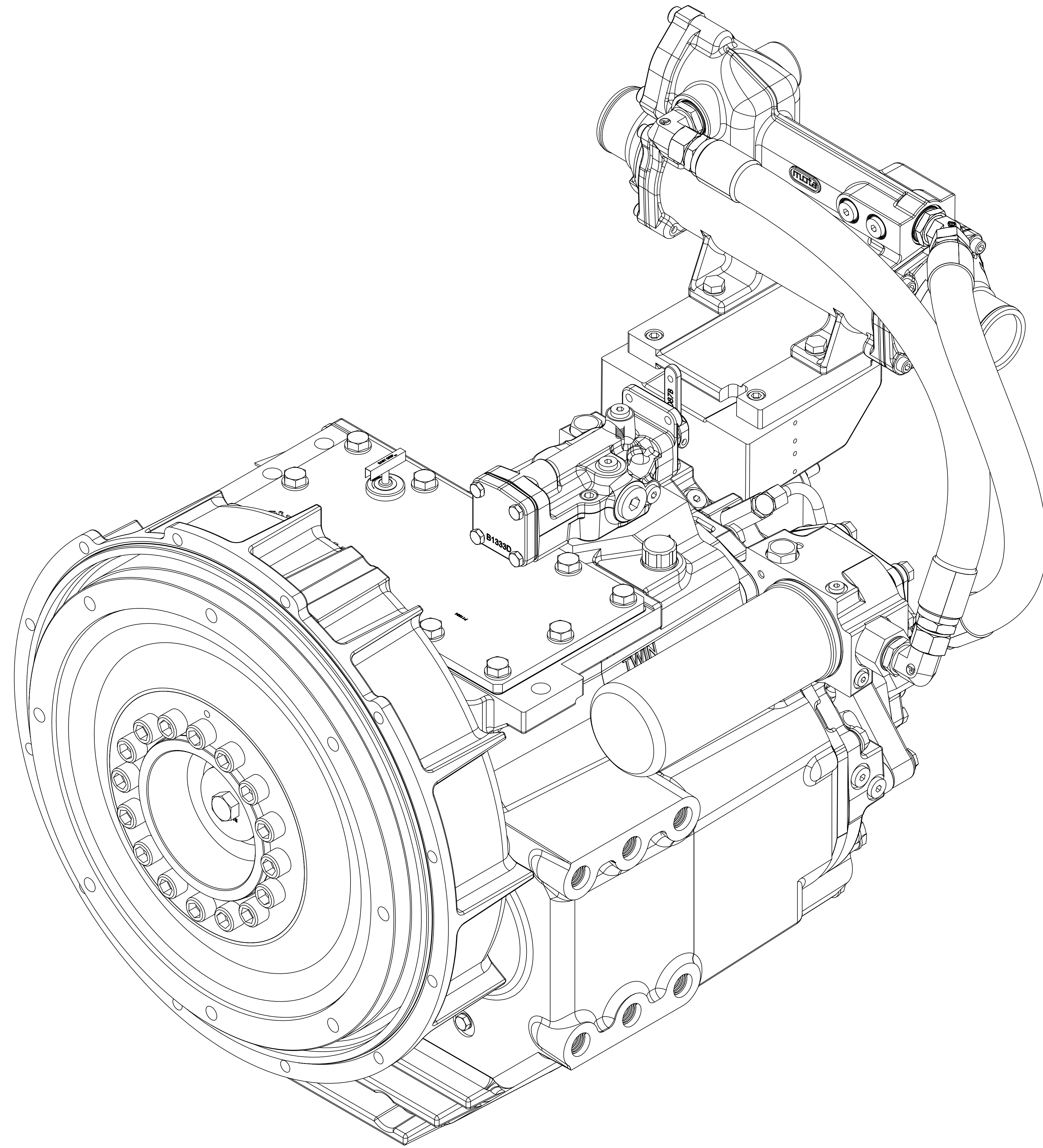


**TECHNICAL SPECIFICATIONS:**

- CONSULT MARINE TRANSMISSION OPERATOR'S MANUAL P/N 1016313 FOR ADDITIONAL INFORMATION AND IMPORTANT PRECAUTION AND SAFETY STATEMENTS.
- MAXIMUM TRANSMISSION INPUT SPEED : 2800 RPM
- OIL TYPE :
  - S.A.E. 30W FOR STEADY OPERATION BETWEEN 65°-85° C
  - S.A.E. 40W FOR STEADY OPERATION BETWEEN 80°-99° C
- OIL CAPACITY : 15.1 L (LESS HOSES AND HEAT EXCHANGER).
- REFER TO S570DW FOR REQUIRED PRESSURES.
- ENGINE SPEED MUST BE REDUCED BELOW 60% OF THE MAXIMUM APPLIED ENGINE SPEED FOR NEUTRAL TO CLUTCH ENGAGEMENT SHIFT AND BELOW 45% OF MAXIMUM APPLIED ENGINE SPEED FOR ENGAGEMENT THRU NEUTRAL TO OPPOSITE CLUTCH SHIFT.
- MAXIMUM TRANSMISSION INPUT SPEED WHILE TROLLING IS 1100 RPM OR 60% OF RATED SPEED, WHICHEVER IS SMALLER.
- TRANSMISSION BACKDRIVING IS LIMITED TO A MAXIMUM SUMP OIL TEMPERATURE OF 100° C.
- CHANGE OIL AND FILTER EVERY 1000 HOURS OR 6 MONTHS (WHICH EVER COMES FIRST). CLEAN PUMP SUCTION SCREEN DURING OIL CHANGE.
- HYDRAULIC SYSTEM DIAGRAM: A7119BF
- TRANSMISSION MASS ELASTIC DATA : B3504BR
- HEAT EXCHANGER REQUIREMENTS : B3649S
- INSTALLATION DRAWING: 102762 SERIES

**GEAR RATIOS:**

- 2.90:1
- 2.57:1
- 2.04:1
- 1.73:1
- 1.48:1
- 1.28:1
- 1.10:1
- 1.00:1



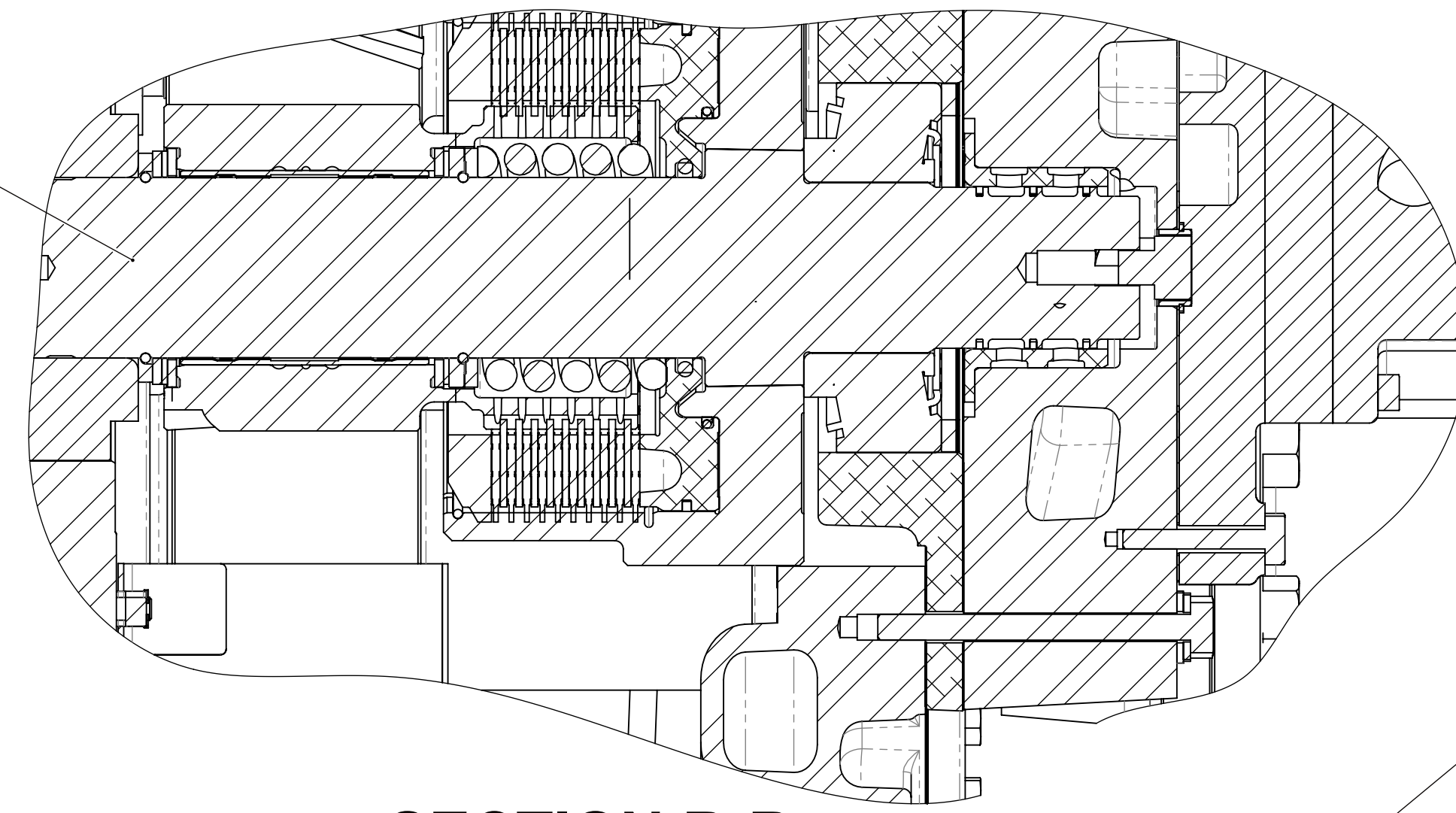
**ASSEMBLY INSTRUCTIONS:**

- SEE S570DW SECTION 1. FOR INSTRUCTIONS.
- REFERENCE S570DW FOR ADDITIONAL STANDARDS AND INSTRUCTIONS THAT MAY APPLY.
- ALL FASTENERS, FITTINGS AND PLUGS TO BE TORQUED PER S574.

FIRST USE ASSEMBLY: 1027560 FIRST USE MODEL: MG-5136SC		WEIGHT: 345.97 kg VOLUME: 1.91 m <sup>3</sup>		THIRD ANGLE PROJECTION		MATERIAL		DATE: 09/27/2012		REV: CHANGE NO. DATE	
SIMILAR TO:		UNLESS OTHERWISE SPECIFIED		FINISH		HEAT TREAT		SCALE: 1:2		TWIN (DISC) RACINE, WI 53403 - USA	
METRIC		A & X AS ALL ANGLES TOLERANCES *1* GEOMETRIC TOLERANCING REQUIRE 14.06.1984		DRAWN BY: L.T.		APPROVED BY: ALC		DESCRIPTION: MARINE TRANS MG-5136SC		1027560 SHEET 1 OF 2	
NOTES: THIS PRINT CONTAINS PROPRIETARY INFORMATION AND IS NOT TO BE REPRODUCED OR TRANSMITTED IN ANY FORM OR BY ANY MEANS, ELECTRONIC OR MECHANICAL, INCLUDING PHOTOCOPYING, RECORDING, OR BY ANY INFORMATION STORAGE AND RETRIEVAL SYSTEM.		TWIN DISC, INCORPORATED		DESIGNED BY: JMF		CHECKED BY: JMF		DRAWN BY: ALC		DATE: 10/18/2016	

**SECONDARY SHAFT GROUP**

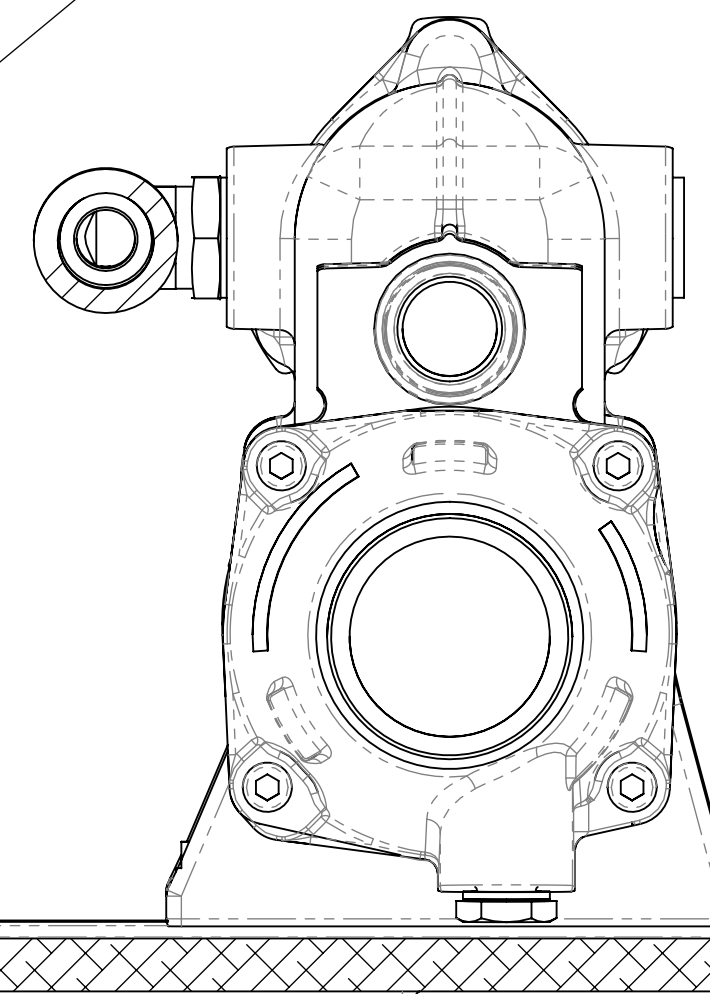
- 2.90:1 RATIO, 21T, 1026084
- 2.57:1 RATIO, 23T, 1027321
- 2.04:1 RATIO, 27T, 1027324
- 1.73:1 RATIO, 30T, 1027327
- 1.48:1 RATIO, 33T, 1027330
- 1.28:1 RATIO, 36T, 1027333
- 1.10:1 RATIO, 39T, 1027336
- 1.00:1 RATIO, 41T, 1027339



**SECTION B-B**

**CONTROL VALVE GROUP**

- MECHANICAL CONTROL VALVE WITH OUT TROLL - 1027558
- MECHANICAL CONTROL VALVE WITH MECHANICAL TROLL - 1027559

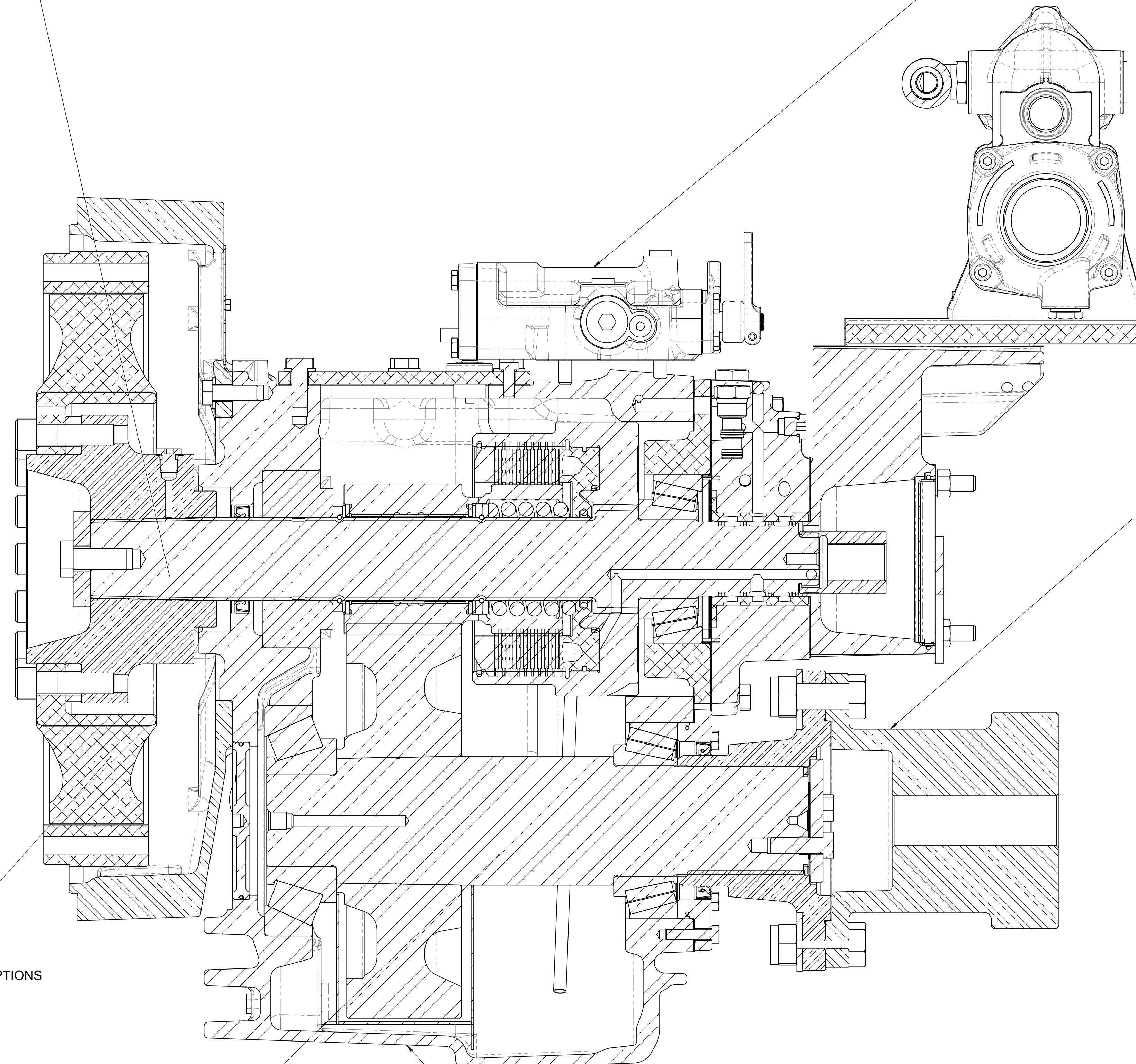


**COMPANION FLANGE GROUP**

- STANDARD - PX11654

**PRIMARY SHAFT GROUP**

- 2.90:1 RATIO, 21T, 1026083
- 2.57:1 RATIO, 23T, 1027320
- 2.04:1 RATIO, 27T, 1027323
- 1.73:1 RATIO, 30T, 1027326
- 1.48:1 RATIO, 33T, 1027329
- 1.28:1 RATIO, 36T, 1027332
- 1.10:1 RATIO, 39T, 1027335
- 1.00:1 RATIO, 41T, 1027338



**SECTION A-A**

**OUTPUT SHAFT GROUP**

- 2.90:1 RATIO, 61T, 1026085
- 2.57:1 RATIO, 59T, 1027322
- 2.04:1 RATIO, 55T, 1027325
- 1.73:1 RATIO, 52T, 1027328
- 1.48:1 RATIO, 49T, 1027331
- 1.28:1 RATIO, 46T, 1027334
- 1.10:1 RATIO, 43T, 1027337
- 1.00:1 RATIO, 41T, 1027340

**HOUSING GROUP**

- STANDARD, 1027667

**INPUT GROUP**

- SEE PRODUCT LIST FOR OPTIONS

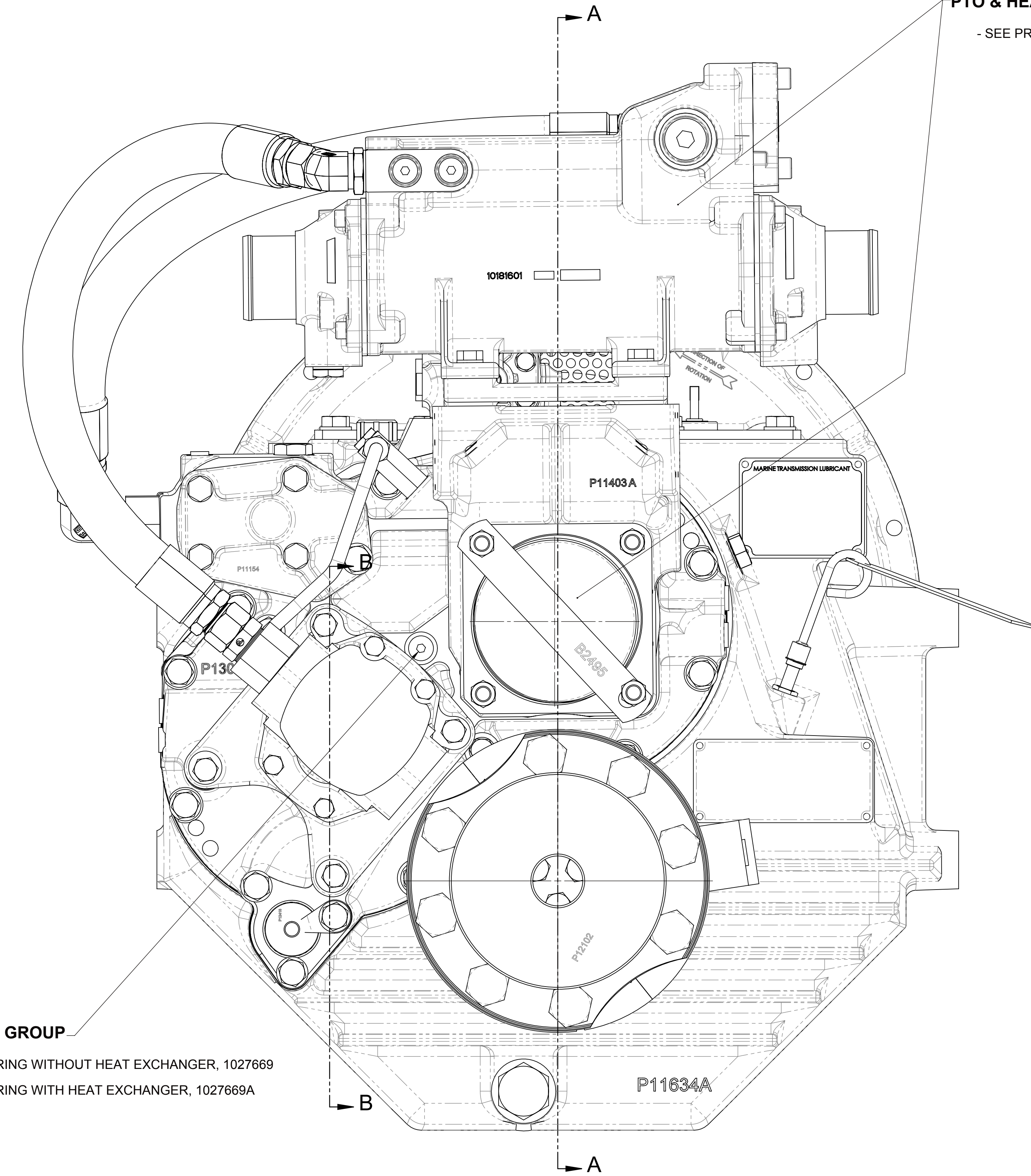
Ⓑ

**MOUNTING BRACKETS**

- STANDARD - 1016428AV
- "MAN" TYPE - 1016428BF

**PTO & HEAT EXCHANGER OPTION**

- SEE PRODUCT LIST FOR OPTIONS



**MONITORING GROUP**

- LESS MONITORING WITHOUT HEAT EXCHANGER, 1027669
- LESS MONITORING WITH HEAT EXCHANGER, 1027669A

**ASSEMBLY INSTRUCTIONS:**

- SEE S570DW SECTION I, FOR INSTRUCTIONS.
- REFERENCE S570DW FOR ADDITIONAL STANDARDS AND INSTRUCTIONS THAT MAY APPLY.
- ALL FASTENERS, FITTINGS AND PLUGS TO BE TORQUED PER S574.

FIRST USE ASSEMBLY: 1027560		WEIGHT: 345.97	THIRD ANGLE PROJECTION	DATE: 09/27/2012	B
FIRST USE MODEL: MG-5136SC				SCALE: 1:2	REV: CHANGE NO. DATE
SIMILAR TO:				DRAWN BY: LT	10/18/2016
<b>METRIC</b>		UNLESS OTHERWISE SPECIFIED	MATERIAL:	CHECKED BY: JMF	<b>TWIN(DISC)</b>
ALL ANGLES TO BE SHOWN UNLESS OTHERWISE SPECIFIED		HEAT TREAT:	DESCRIPTION:	APPROVED BY: ALC	RACINE, WI 53403 - USA
GEOMETRIC TOLERANCES TO BE SHOWN UNLESS OTHERWISE SPECIFIED			MARINE TRANS	DATE: 10/18/2016	1027560
			MG-5136SC	SHEET: 2 OF 2	TBY: B