

- |          |                             |
|----------|-----------------------------|
| <b>1</b> | INPUT GROUP REFERENCE PLANE |
| <b>2</b> | PTO GROUP MOUNTING FACE     |
| <b>3</b> | LEFT MOUNTING BRACKET FACE  |
| <b>4</b> | RIGHT MOUNTING BRACKET FACE |

**NOTES:**

### A.PROPORTIONAL CONTROL VALVE OPERATION

- PROPORTIONAL CONTROL VALVE OPERATION**
1. WARNING - DO NOT CONNECT VALVE COIL DIRECTLY TO BATTERY/ POWER SUPPLY VOLTAGE
  2. OPERATION TO BE PERFORMED WITH ONLY TWIN-DISC CONTROL SYSTEM MODULES

### B. MANUAL DIRECTIONAL CONTROL VALVE OPERATION

1. WITH MANUAL DIRECTIONAL CONTROL VALVE IN CENTERED POSITION PUSH TO ENGAGE PRIMARY CLUTCH
2. WITH MANUAL DIRECTIONAL CONTROL VALVE IN CENTERED POSITION PULL TO ENGAGE SECONDARY CLUTCH

### C. MANUAL DIRECTIONAL CONTROL VALVE MODE SWITCH

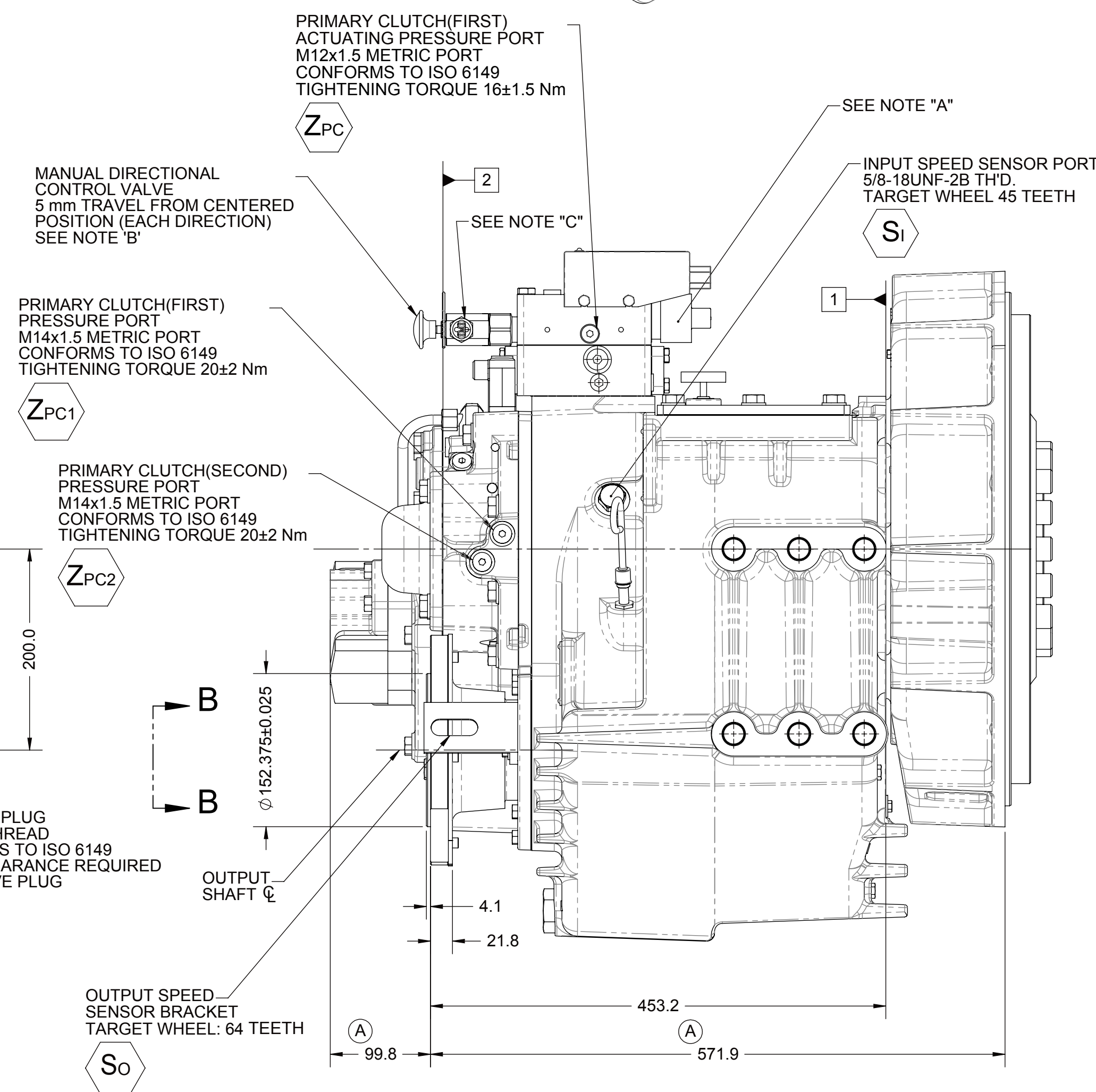
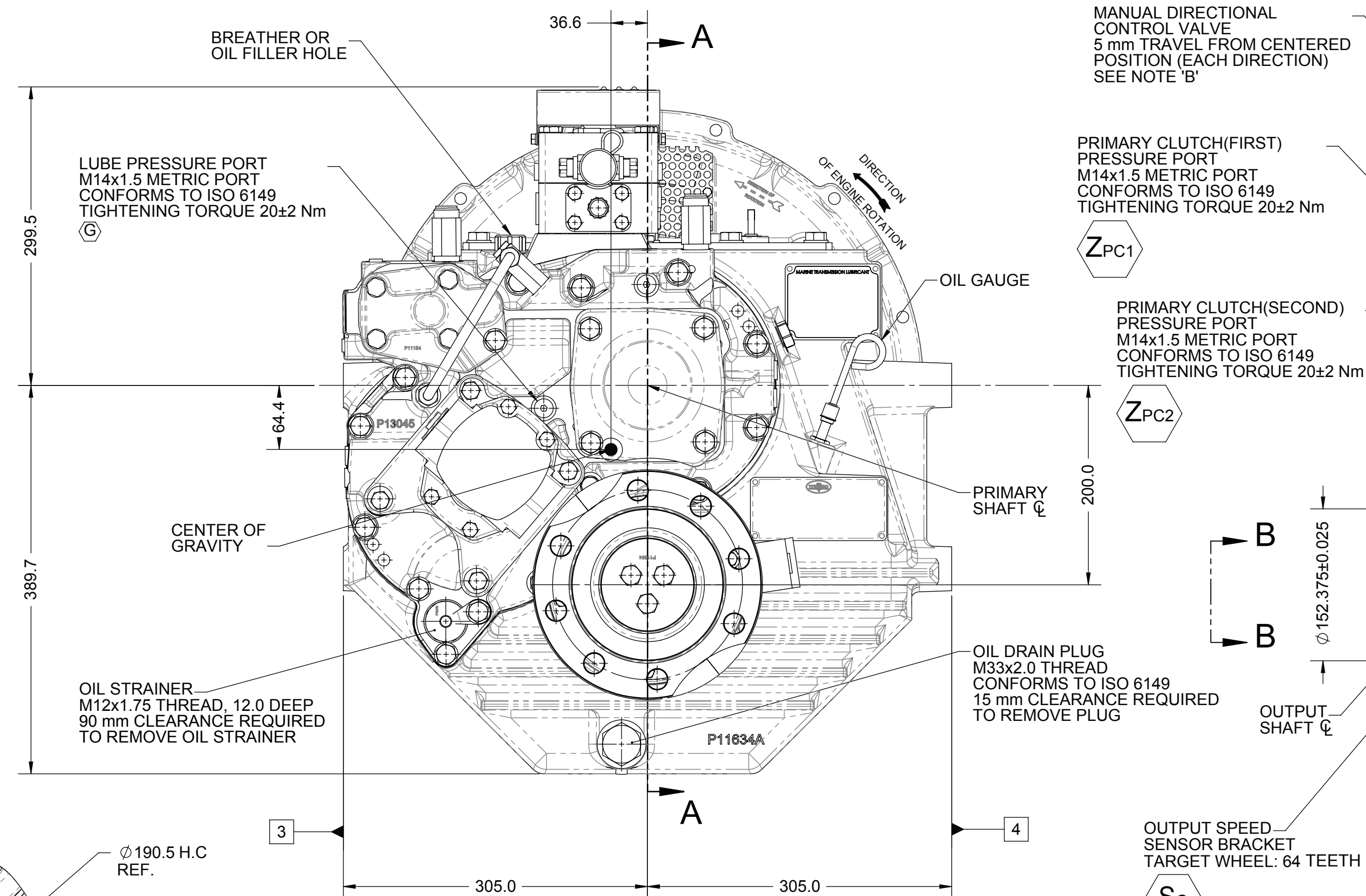
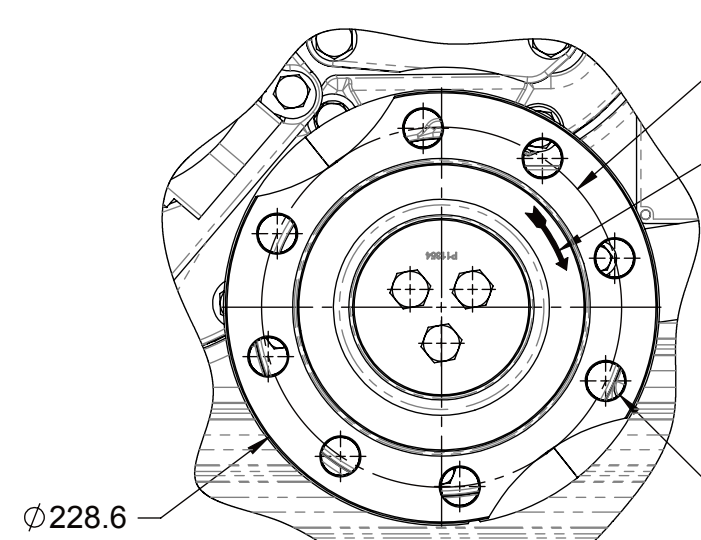
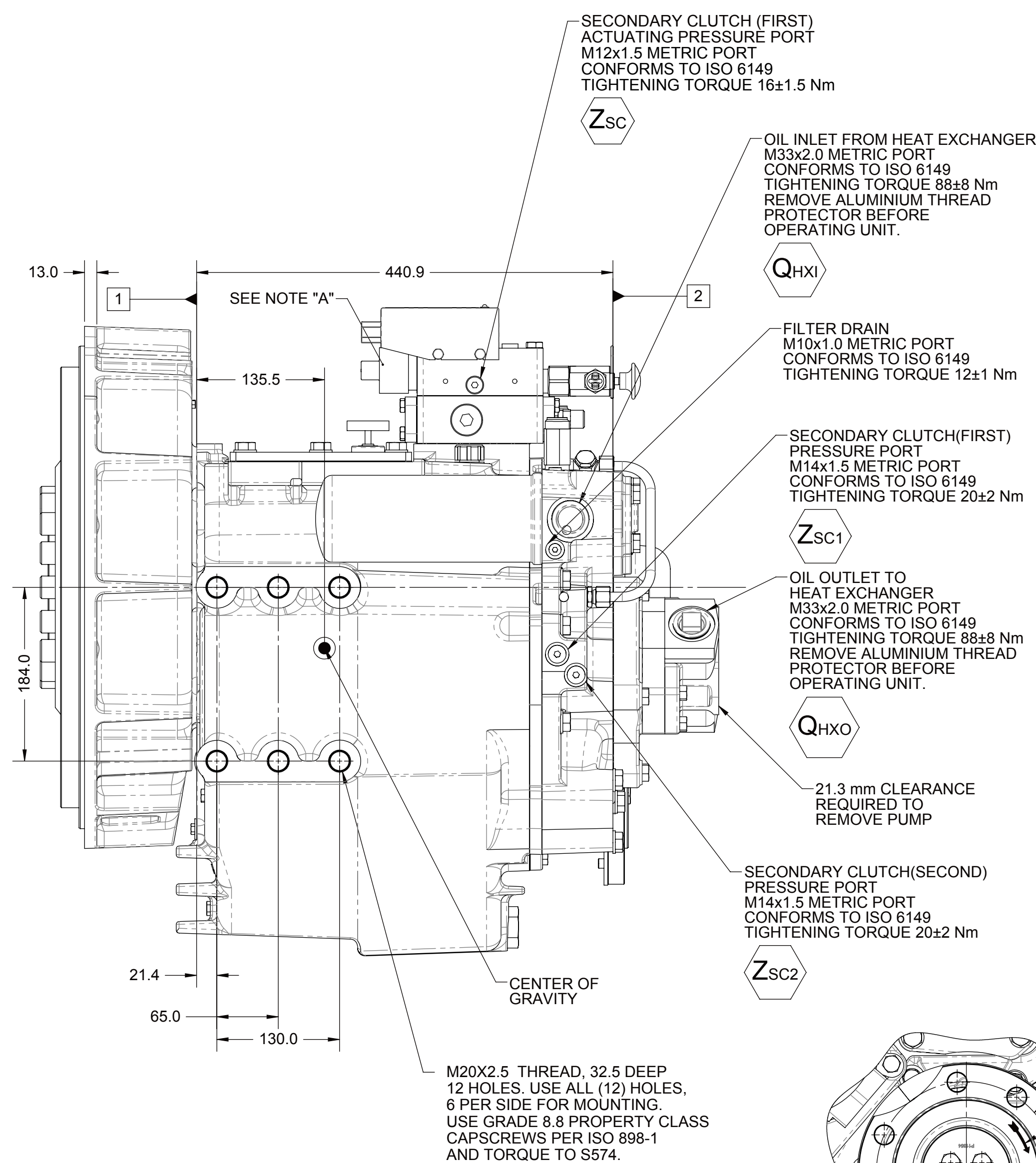
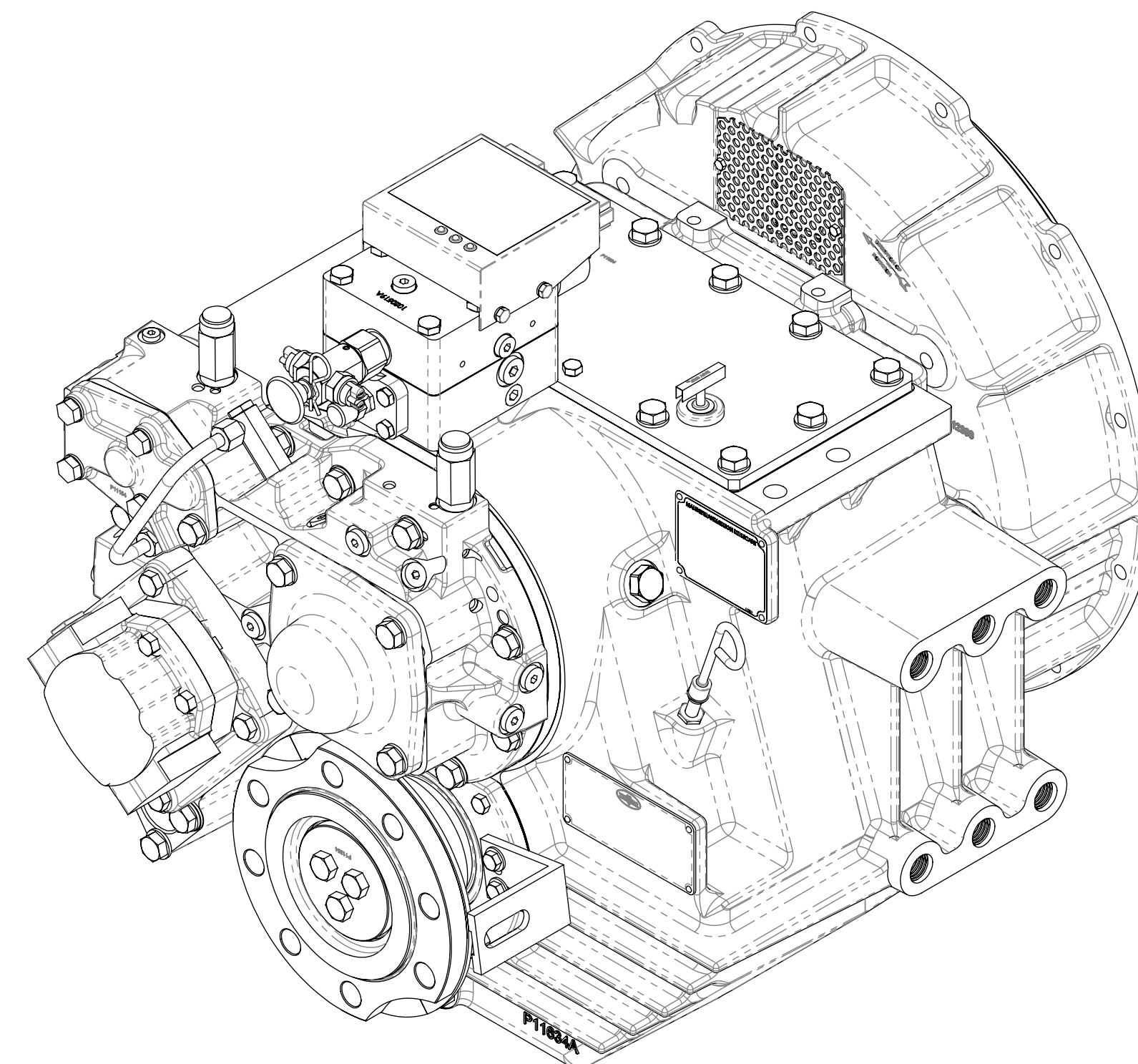
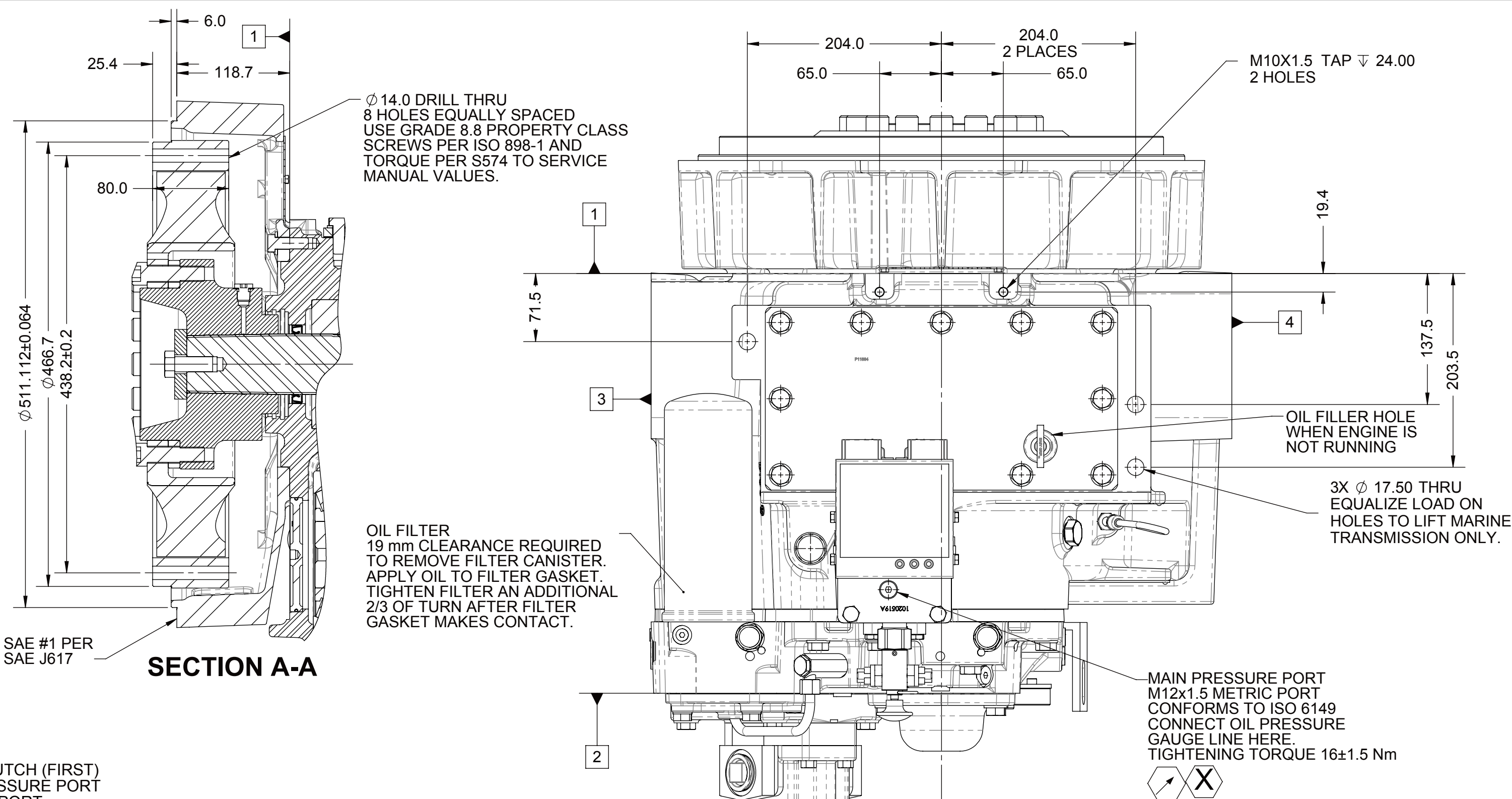
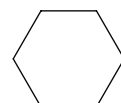
1. SWITCH IS NORMALLY CLOSED WHEN MANUAL DIRECTIONAL CONTROL VALVE IS IN CENTERED POSITION AND OPEN WHEN LEVER IS ACTUATED FROM CENTERED POSITION
2. CURRENT = 20 AMP MAX.
3. FOR WIRING SCHEMATIC REFER TO CONTROL DRAWING

D. UNLESS OTHERWISE SPECIFIED FASTENER TORQUE  
VALUES AS PER S574 STANDARD

E. ALL POINTS AVAILABLE FOR TESTING ARE CODED

**A**

F. REFERENCE S930 FOR TWIN DISC REQUIREMENTS FOR PRESSURE AND TEMPERATURE ALARM LEVELS.





**EQUIPMENT SHOWN:**  
 - MGX-5136SC PER 1027445 ASSEMBLY  
 - SAE #1/SAE 355 VULKAN VL-3011S  
 - GP VALVE WITH EC050 CONTROL MODULE

A	ECNWF-24447	11/20/2014
REV	CHANGE NO.	DATE



1027608

A1	SHEET:	1 OF 1
----	--------	--------

FIRST USE ASSEMBLY:		WEIGHT: 304.0 kg		 THIRD ANGLE PROJECTION		MATERIAL:		DATE: 12/10/2012		 RACINE, WI 53403 - USA			
FIRST USE MODEL:		WRT: kg m <sup>2</sup>				HEAT TREAT:		SCALE: 1:4					
SIMILAR TO:		<div>METRIC</div>		UNLESS OTHERWISE SPECIFIED MACHINED DIMENSIONS X.XX ±0.13 X.X ±0.25 X.XX ±0.15 ALL ANGLE TOLERANCES ±1° GEOMETRIC TOLERANCES PER ASME Y14.5B		DESCRIPTION:		DRAWN BY: MG		1027608			
		NOTICE: THIS PRINT CONTAINS PROPRIETARY INFORMATION AND IS NOT TO BE USED IN ANY MANNER DEPREMIATIAL TO THE INTEREST OF TWIN DISC, INCORPORATED THIS NOTICE IS NOT INTENDED TO NULLIFY OR LIMIT RIGHTS IN ANY PATENT OR PROPRIETARY RIGHTS OF TWIN DISC, INCORPORATED		INSTALLATION MGX-6136SC		CHECKED BY: JMF		APPROVED BY:					
								DWG: A1		SHEET: 1 OF 4		REV: A	

F

E

D

---

C

51.	
	E

A

--	--