

- 1 INPUT GROUP REFERENCE PLANE
- 2 PTO GROUP MOUNTING FACE
- 3 LEFT MOUNTING BRACKET FACE
- 4 RIGHT MOUNTING BRACKET FACE

NOTES:

A. PROPORTIONAL CONTROL VALVE OPERATION

1. WARNING - DO NOT CONNECT VALVE COIL DIRECTLY TO BATTERY/ POWER SUPPLY VOLTAGE
2. OPERATION TO BE PERFORMED WITH ONLY TWIN-DISC CONTROL SYSTEM MODULES

B. MANUAL DIRECTIONAL CONTROL VALVE OPERATION

1. WITH MANUAL DIRECTIONAL CONTROL VALVE IN CENTERED POSITION PUSH TO ENGAGE PRIMARY CLUTCH
2. WITH MANUAL DIRECTIONAL CONTROL VALVE IN CENTERED POSITION PULL TO ENGAGE SECONDARY CLUTCH

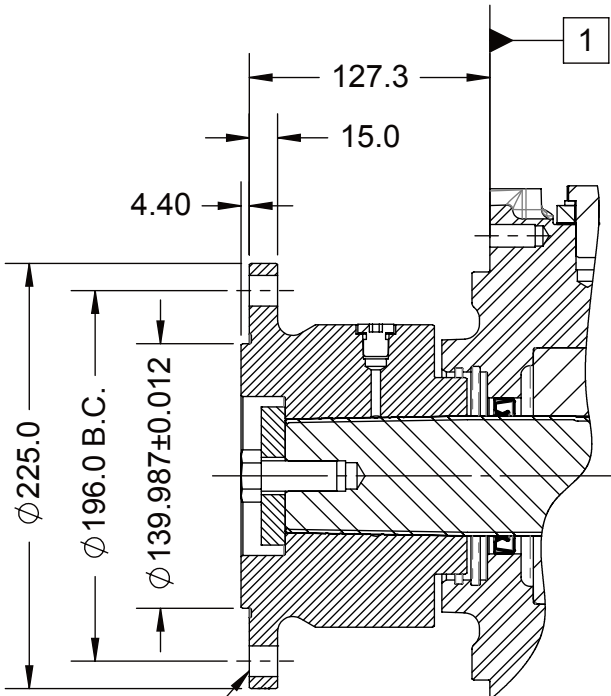
C. MANUAL DIRECTIONAL CONTROL VALVE MODE SWITCH

1. SWITCH IS NORMALLY CLOSED WHEN MANUAL DIRECTIONAL CONTROL VALVE IS IN CENTERED POSITION AND OPEN WHEN LEVER IS ACTUATED FROM CENTERED POSITION
2. CURRENT = 20 AMP MAX.
3. FOR WIRING SCHEMATIC REFER TO CONTROL DRAWING

D. UNLESS OTHERWISE SPECIFIED FASTENER TORQUE VALUES AS PER S574 STANDARD

E. ALL POINTS AVAILABLE FOR TESTING ARE CODED

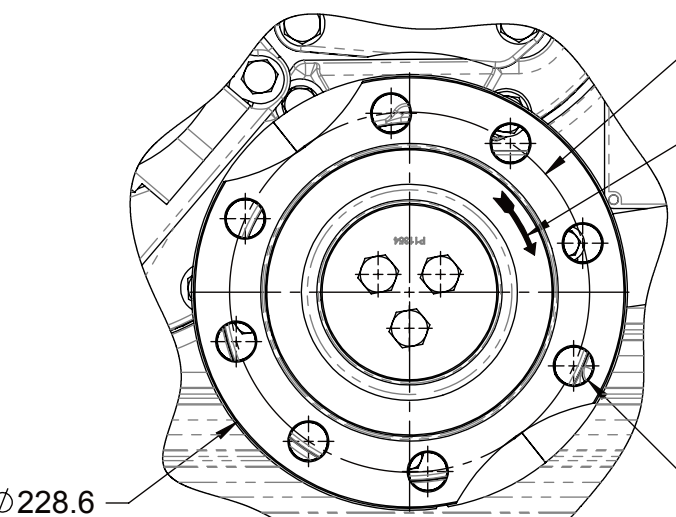
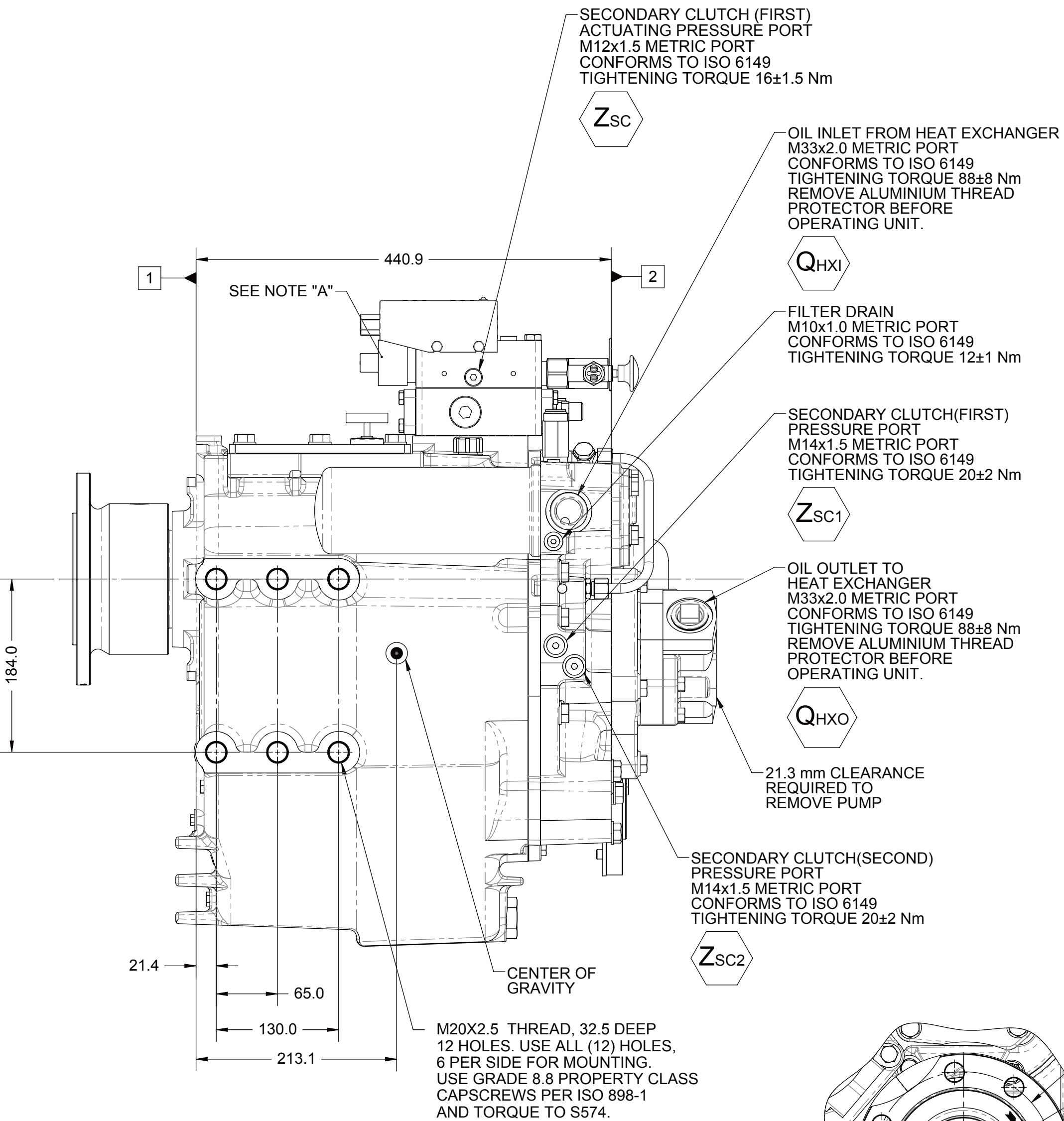
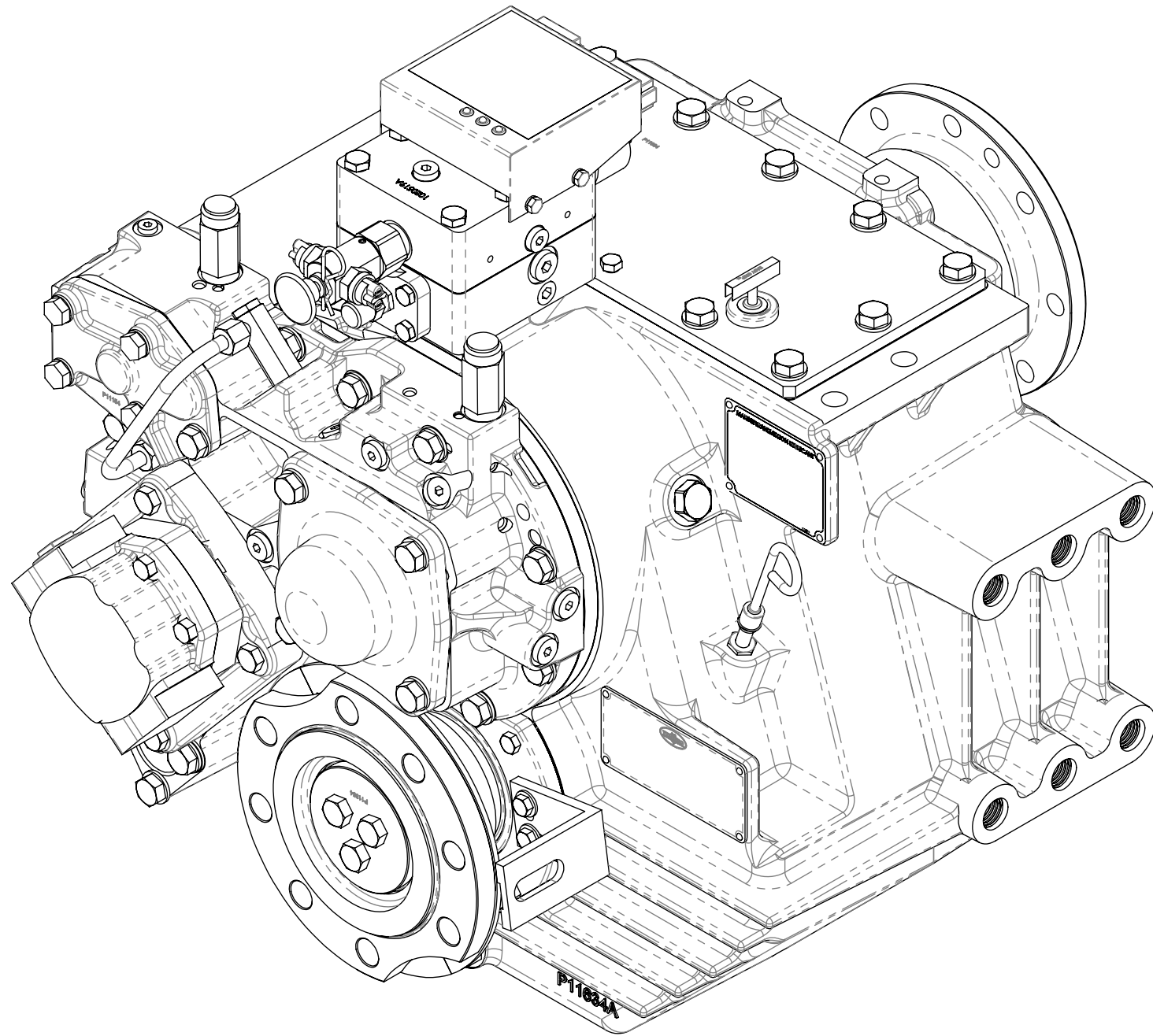
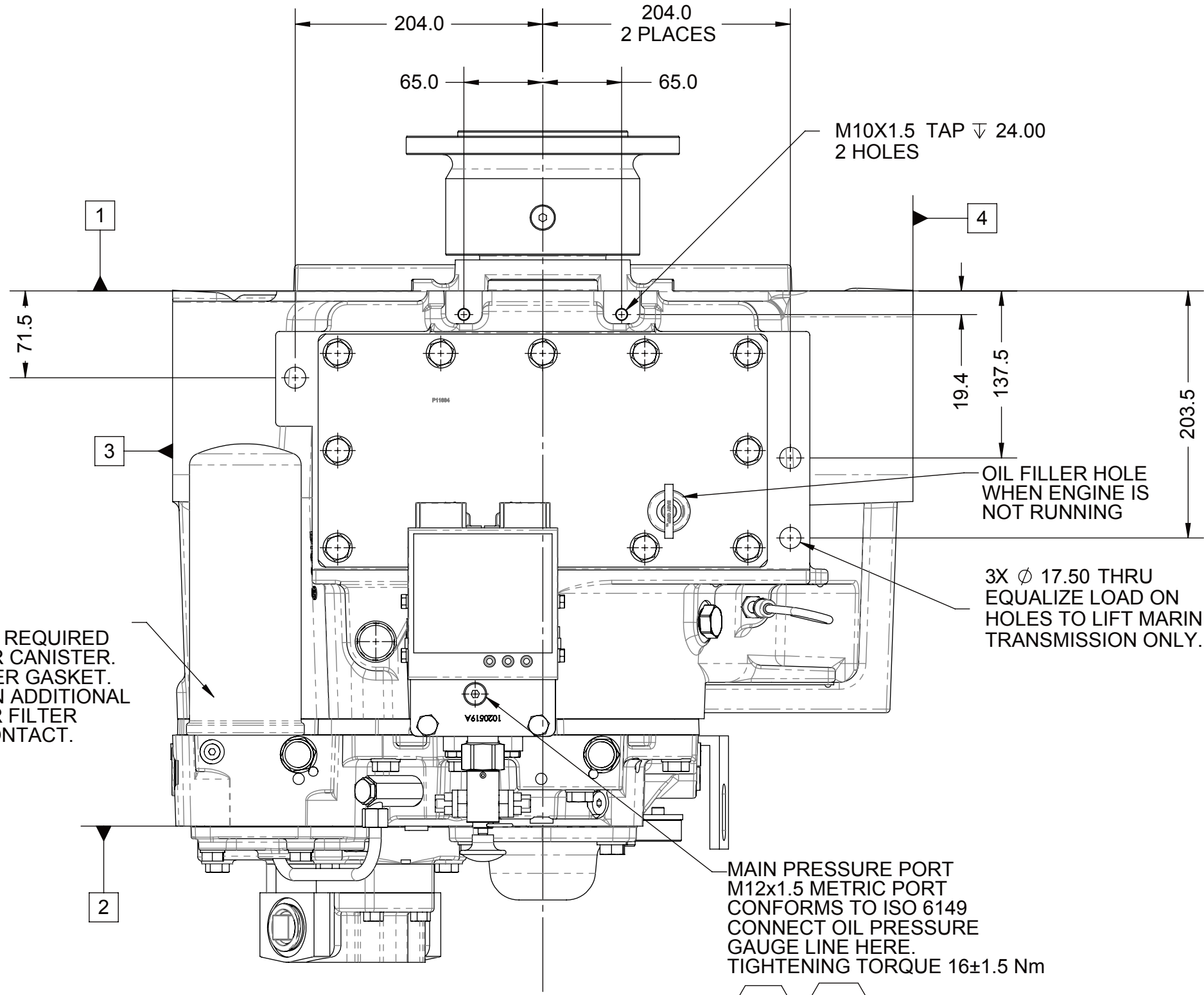
F. REFERENCE S930 FOR TWIN DISC REQUIREMENTS FOR PRESSURE AND TEMPERATURE ALARM LEVELS.



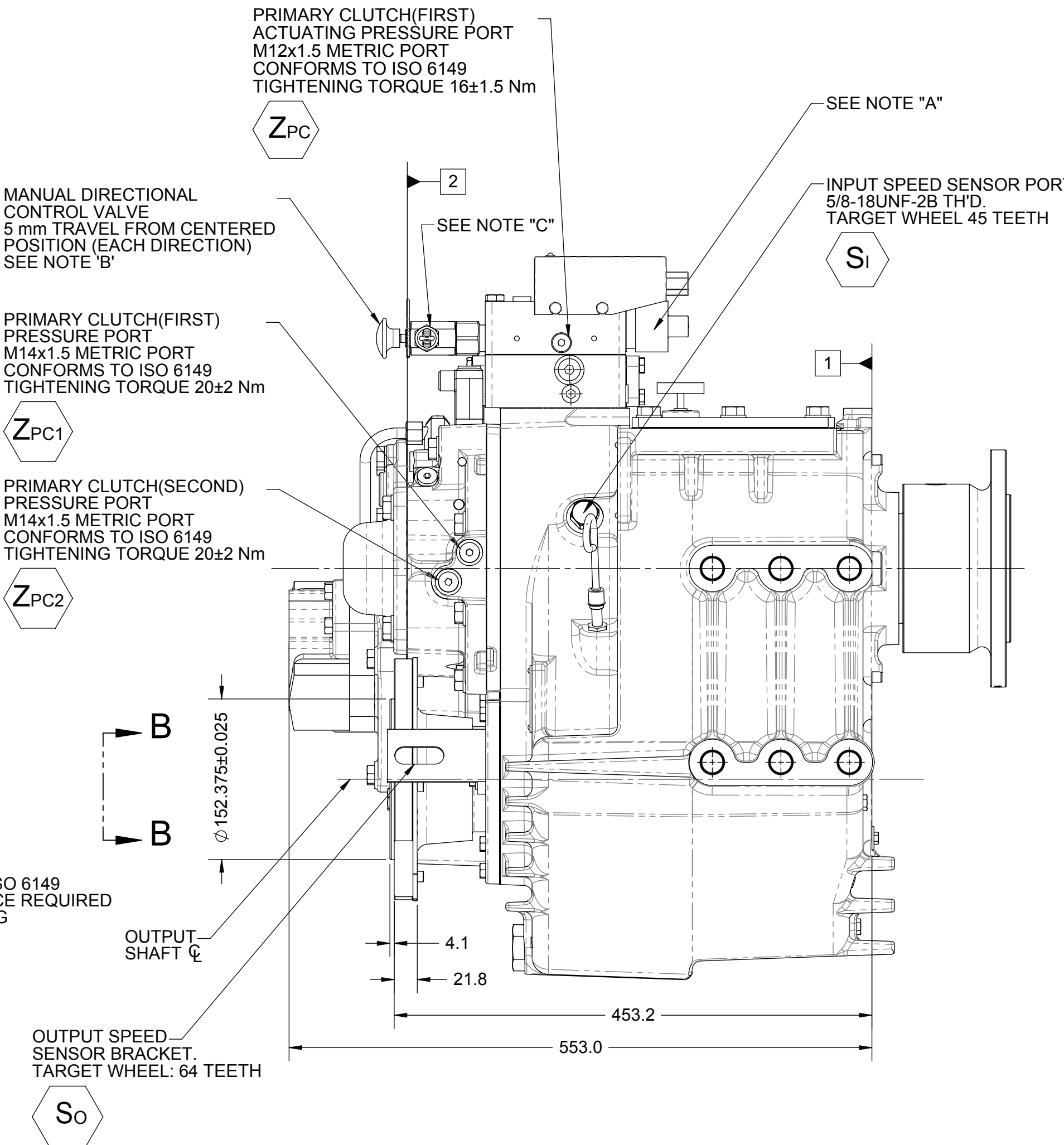
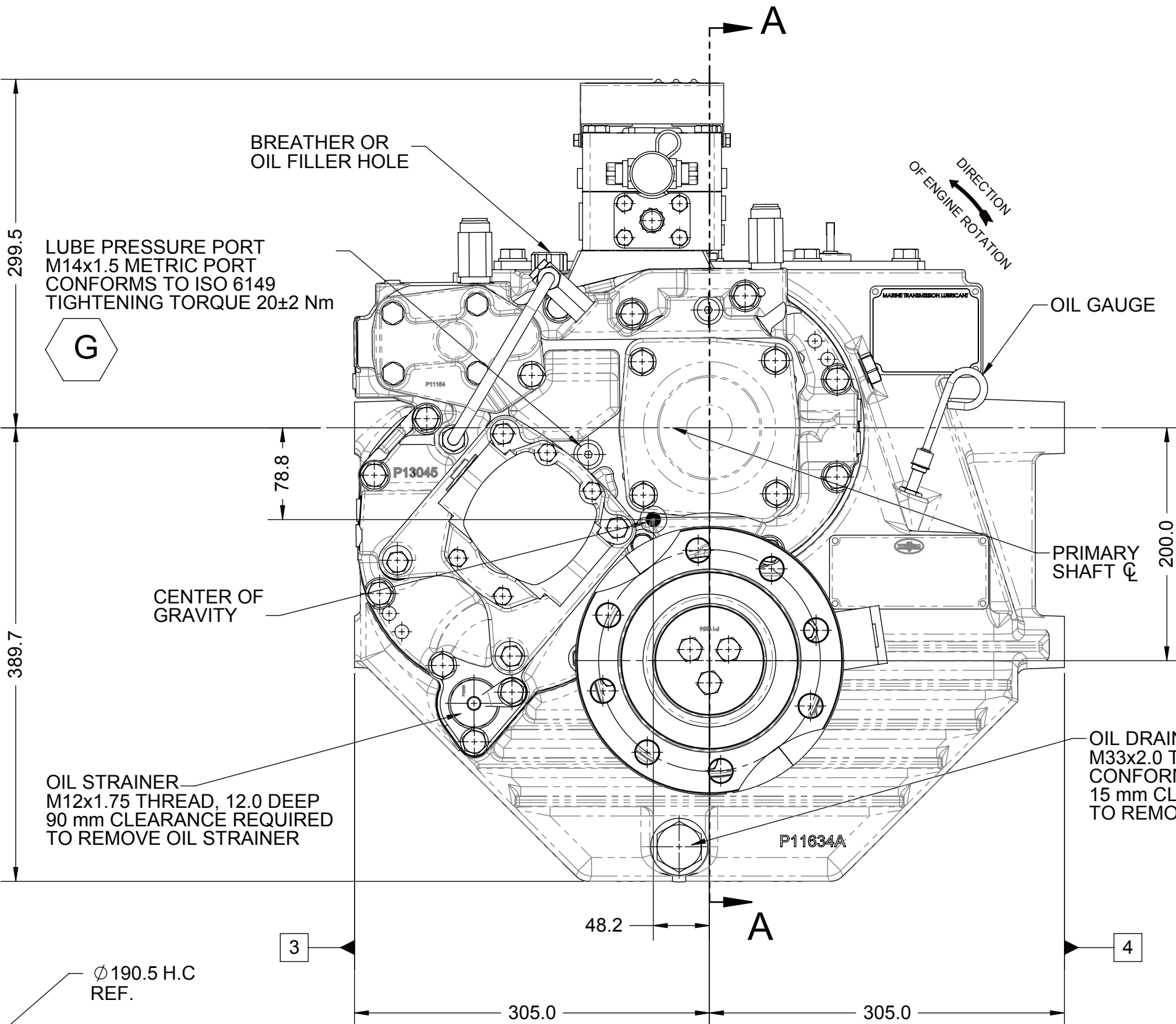
SECTION A-A

Ø 16.2±0.1 DRILL THRU
8 HOLES EQUALLY SPACED
USE 10.9 PROPERTY CLASS
CAPSCREWS PER ISO 898-1 AND
TORQUE TO S574 OR SERVICE
MANUAL VALUES.

OIL FILTER
19 mm CLEARANCE REQUIRED
TO REMOVE FILTER CANISTER.
APPLY OIL TO FILTER GASKET.
TIGHTEN FILTER AN ADDITIONAL
2/3 OF TURN AFTER FILTER
GASKET MAKES CONTACT.



VIEW B-B



EQUIPMENT SHOWN:
- MGX-5136SC PER 1027445 ASSEMBLY
- GWB 587.50 FREE STANDING FLANGE
- GP VALVE WITH EC050 CONTROL MODULE

FIRST USE ASSEMBLY: 1027445 FIRST USE MODEL: MGX-5136SC SIMILAR TO: 1027608	WEIGHT: 266.5kg WR: kg m³	THIRD ANGLE PROJECTION	MATERIAL: HEAT TREAT:	DATE: 02/03/2015 SCALE: 1:4 DRAWN BY: MG CHECKED BY: NFC APPROVED BY: NFC	DESCRIPTION: INSTALLATION MGX-5136SC	REV: - CHANGE NO.: DATE: 02/03/2015	TWIN DISC RACINE, WI 53403 - USA 1027608A SHEET: 1 OF 1 REV: -
---	------------------------------	------------------------	--------------------------	---	---	---	--