

- |          |                             |
|----------|-----------------------------|
| <b>1</b> | INPUT GROUP REFERENCE PLANE |
| <b>2</b> | PTO GROUP MOUNTING FACE     |
| <b>3</b> | LEFT MOUNTING BRACKET FACE  |
| <b>4</b> | RIGHT MOUNTING BRACKET FACE |
| <b>5</b> | PUMP MOUNT FACE             |

**NOTES:**

### A.PROPORTIONAL CONTROL VALVE OPERATION

1. WARNING - DO NOT CONNECT VALVE COIL DIRECTLY TO BATTERY/ POWER SUPPLY VOLTAGE.
2. OPERATION TO BE PERFORMED WITH ONLY TWIN-DISC CONTROL SYSTEM MODULES.


## **B. MANUAL DIRECTIONAL CONTROL VALVE OPERATION**

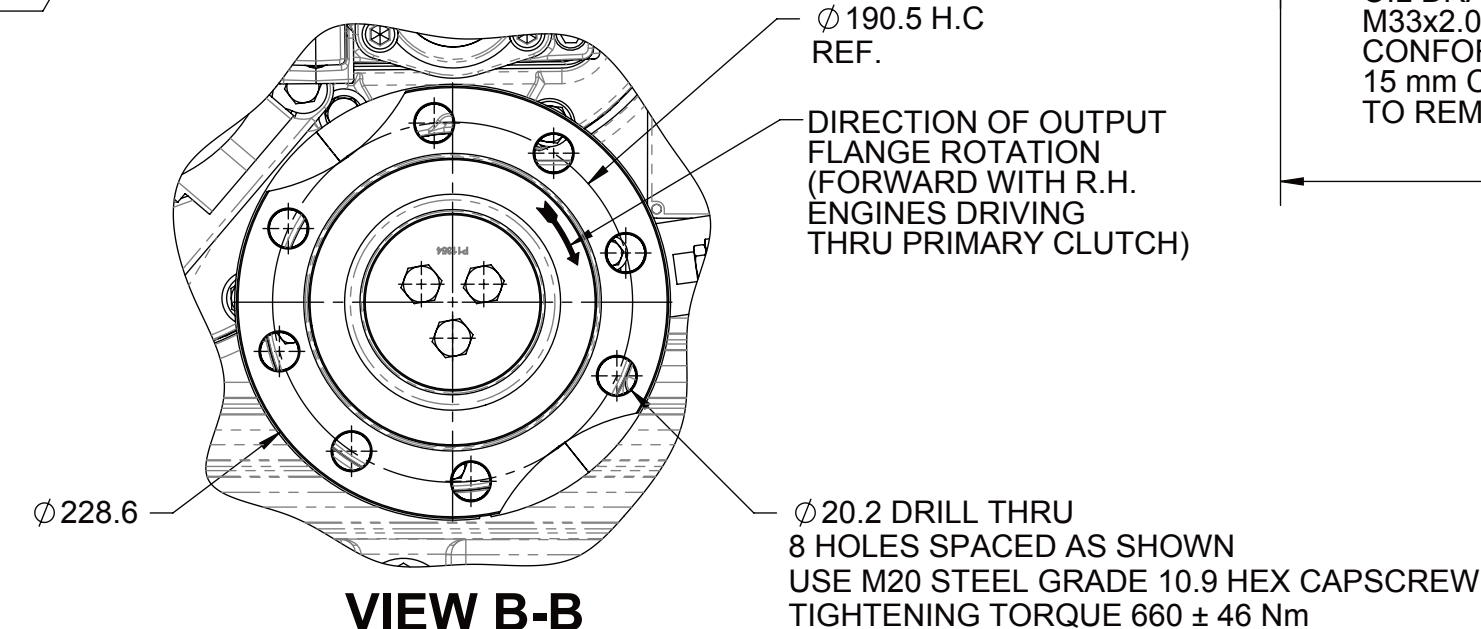
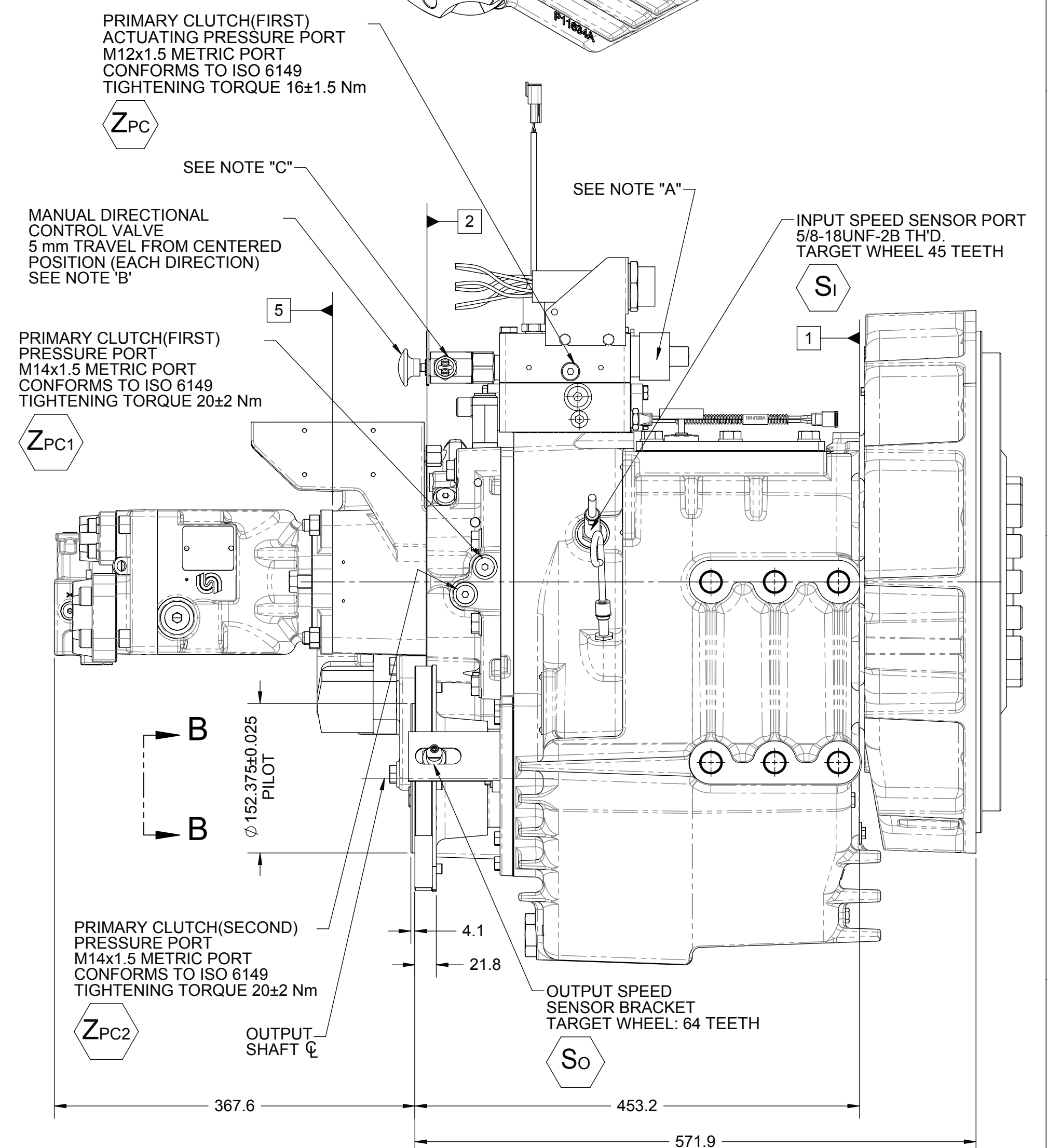
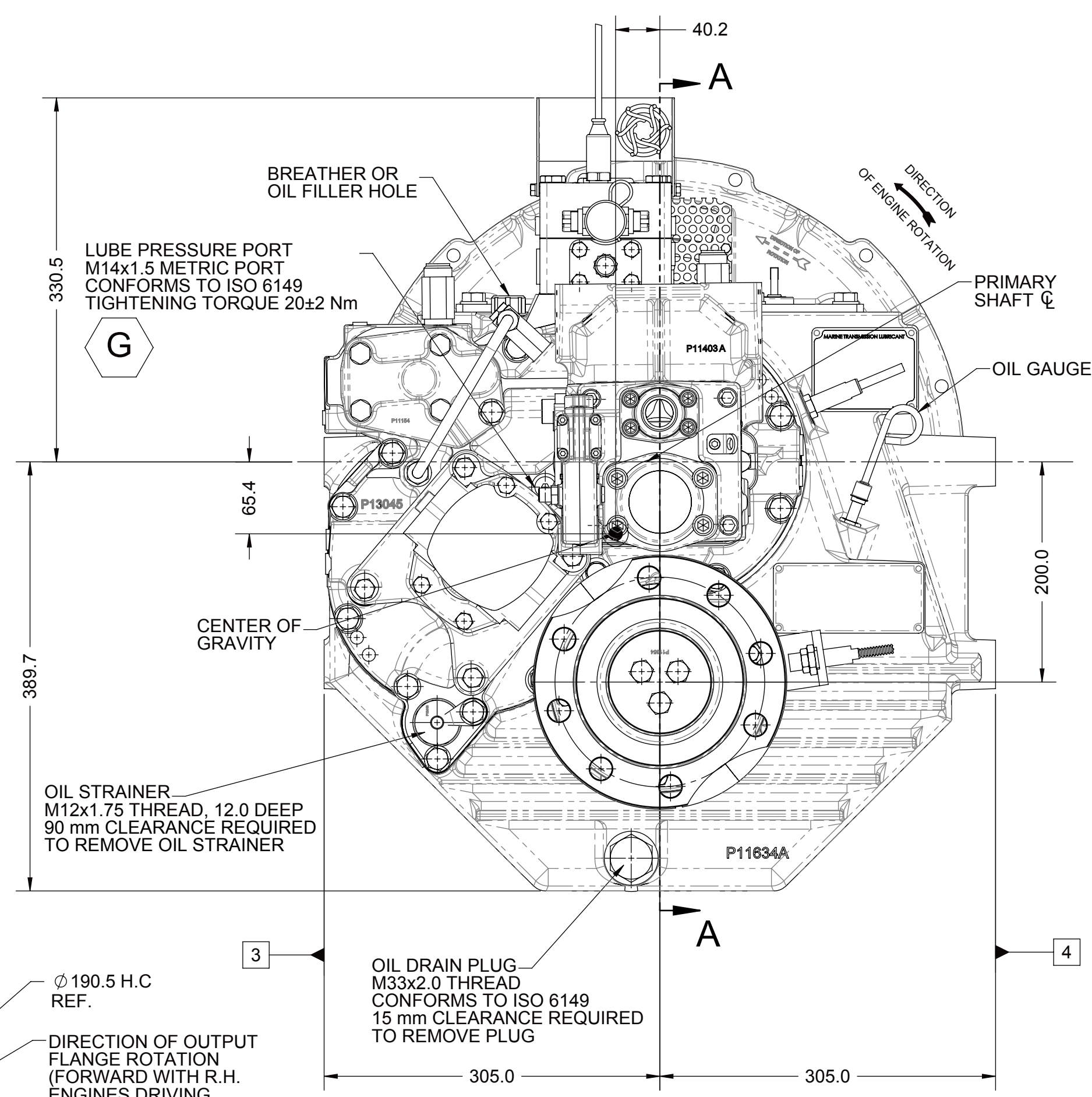
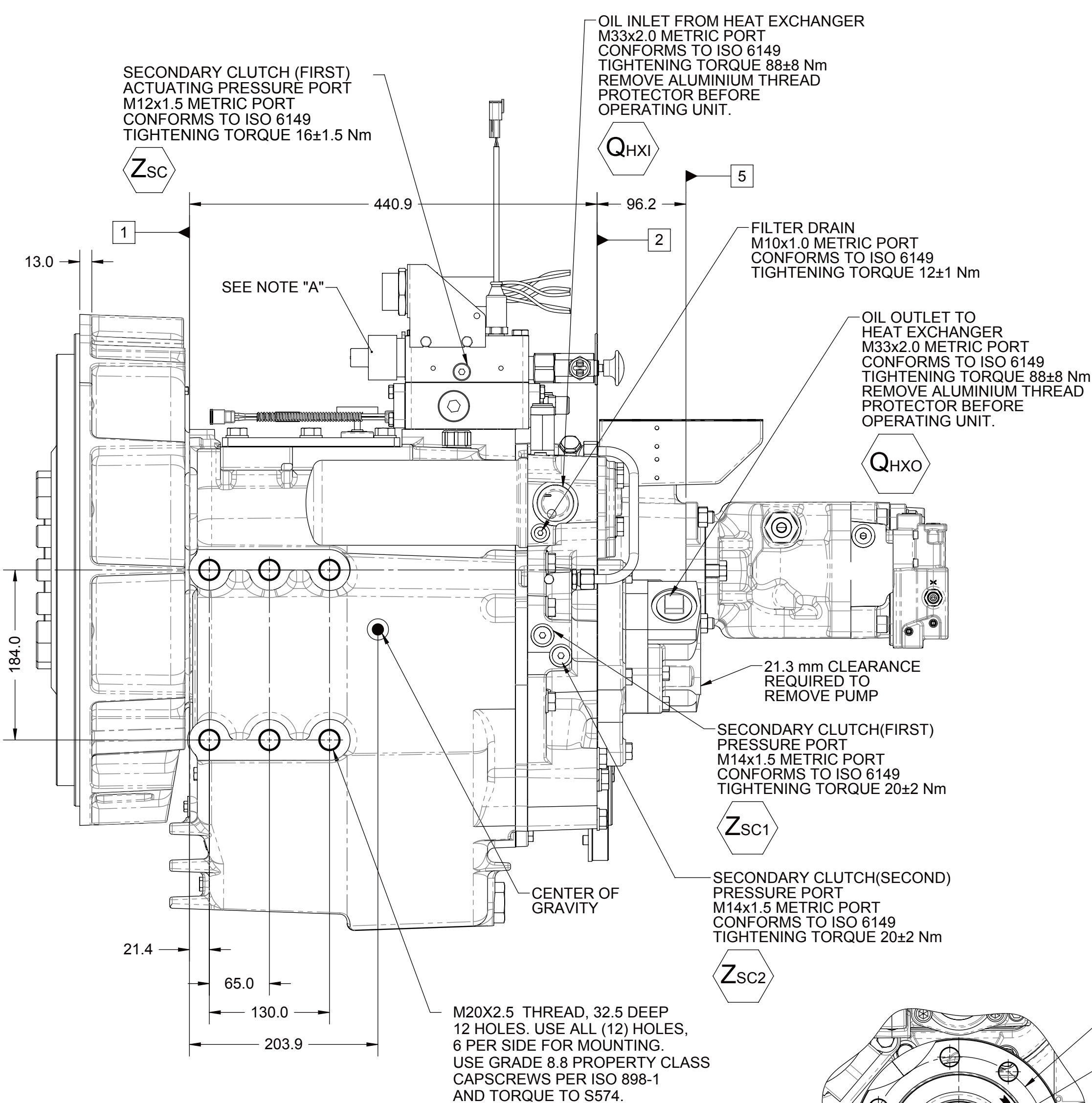
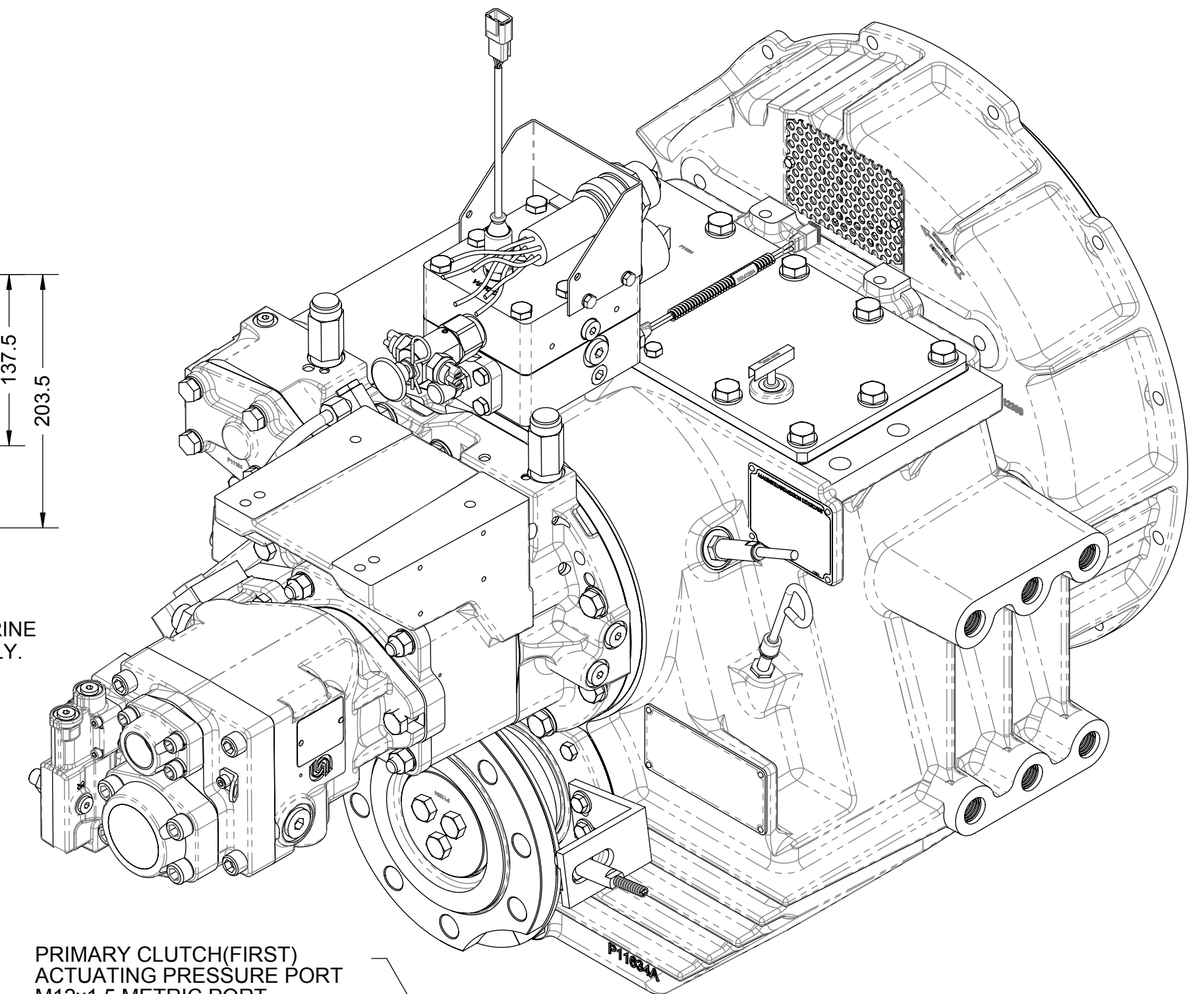
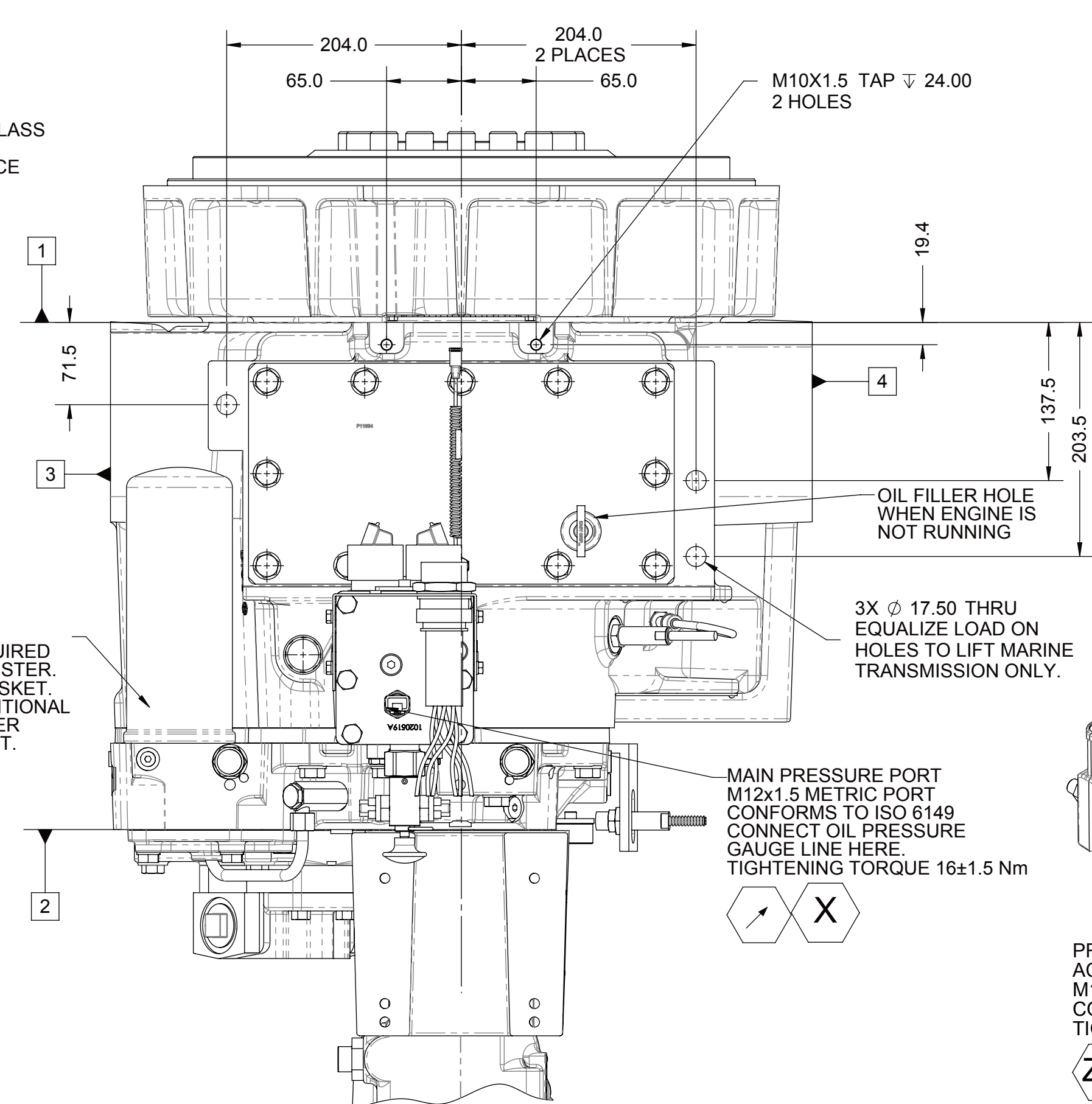
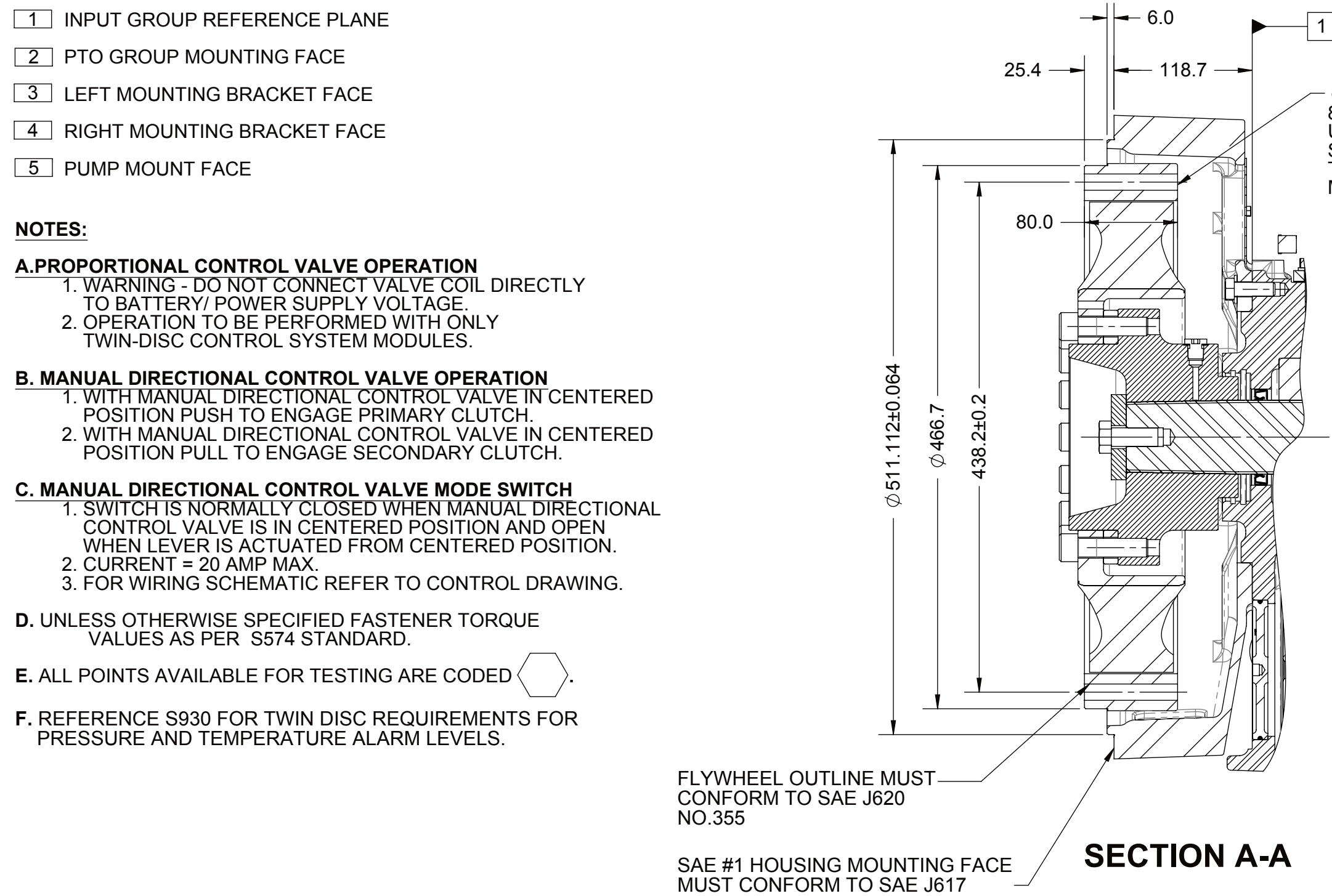
1. WITH MANUAL DIRECTIONAL CONTROL VALVE IN CENTERED POSITION PUSH TO ENGAGE PRIMARY CLUTCH.
2. WITH MANUAL DIRECTIONAL CONTROL VALVE IN CENTERED POSITION PULL TO ENGAGE SECONDARY CLUTCH.

### C. MANUAL DIRECTIONAL CONTROL VALVE MODE SWITCH

1. SWITCH IS NORMALLY CLOSED WHEN MANUAL DIRECTIONAL CONTROL VALVE IS IN CENTERED POSITION AND OPEN WHEN LEVER IS ACTUATED FROM CENTERED POSITION.
2. CURRENT = 20 AMP MAX.
3. FOR WIRING SCHEMATIC REFER TO CONTROL DRAWING.



- D. UNLESS OTHERWISE SPECIFIED FASTENER TORQUE  
VALUES AS PER S574 STANDARD.**

- E. ALL POINTS AVAILABLE FOR TESTING ARE CODED .
- F. REFERENCE S930 FOR TWIN DISC REQUIREMENTS FOR PRESSURE AND TEMPERATURE ALARM LEVELS.



**EQUIPMENT SHOWN:**

- MGX-5136SC PER 1027445 ASSEMBLY
- SAE #1/SAE 355 VULKAN VL-3011S
- GP VALVE WITH EC300 HARNESS
- SAE J744 101-2, 25-4 LIVE PTO
- MOUNTED PUMP, ITGP045BBZ15REJ

FIRST USE ASSEMBLY: 1027445 FIRST USE MODEL: MGX-5136SC SIMILAR TO: 1027608		WEIGHT: 320.1 kg WRT: kg m <sup>2</sup>		 THIRD ANGLE PROJECTION		MATERIAL:		DATE: 08/13/2015			
<h1>METRIC</h1> <p>NOTICE: THIS PRINT CONTAINS PROPRIETARY INFORMATION AND IS NOT TO BE USED IN ANY MANNER DEPRECIATING TO THE INTEREST OF <b>TWIN DISC, INCORPORATED</b></p> <p>THIS NOTICE IS NOT INTENDED TO NULLIFY OR LIMIT RIGHTS TO THE U.S. GOVERNMENT OR OTHERS BY CONTRACT.</p>		UNLESS OTHERWISE SPECIFIED MACHINED DIMENSIONS X.X = 0.25 X.XX = 0.13 ALL ANGULAR TOLERANCES ±1° GEOMETRIC TOLERANCING PER ASME Y14.5 M 1994		HEAT TREAT:		SCALE: 1:4		RACINE, WI 53403 - USA			
						DRAWN BY: PM CHECKED BY: NFC		1027608C			
<h2>INSTALLATION</h2> <h3>MGX-5136SC</h3>		DESCRIPTION:		APPROVED BY: NFC		DWG. SIZE: A1		SHEET: 1 OF 1		REV: -	