

- 1 INPUT GROUP REFERENCE PLANE  
2 PTO GROUP MOUNTING FACE  
3 LEFT MOUNTING BRACKET FACE  
4 RIGHT MOUNTING BRACKET FACE

NOTES:

A. PROPORTIONAL CONTROL VALVE OPERATION

1. WARNING - DO NOT CONNECT VALVE COIL DIRECTLY TO BATTERY/ POWER SUPPLY VOLTAGE
2. OPERATION TO BE PERFORMED WITH ONLY TWIN-DISC CONTROL SYSTEM MODULES

B. MANUAL DIRECTIONAL CONTROL VALVE OPERATION

1. WITH MANUAL DIRECTIONAL CONTROL VALVE IN CENTERED POSITION PUSH TO ENGAGE PRIMARY CLUTCH
2. WITH MANUAL DIRECTIONAL CONTROL VALVE IN CENTERED POSITION PULL TO ENGAGE SECONDARY CLUTCH

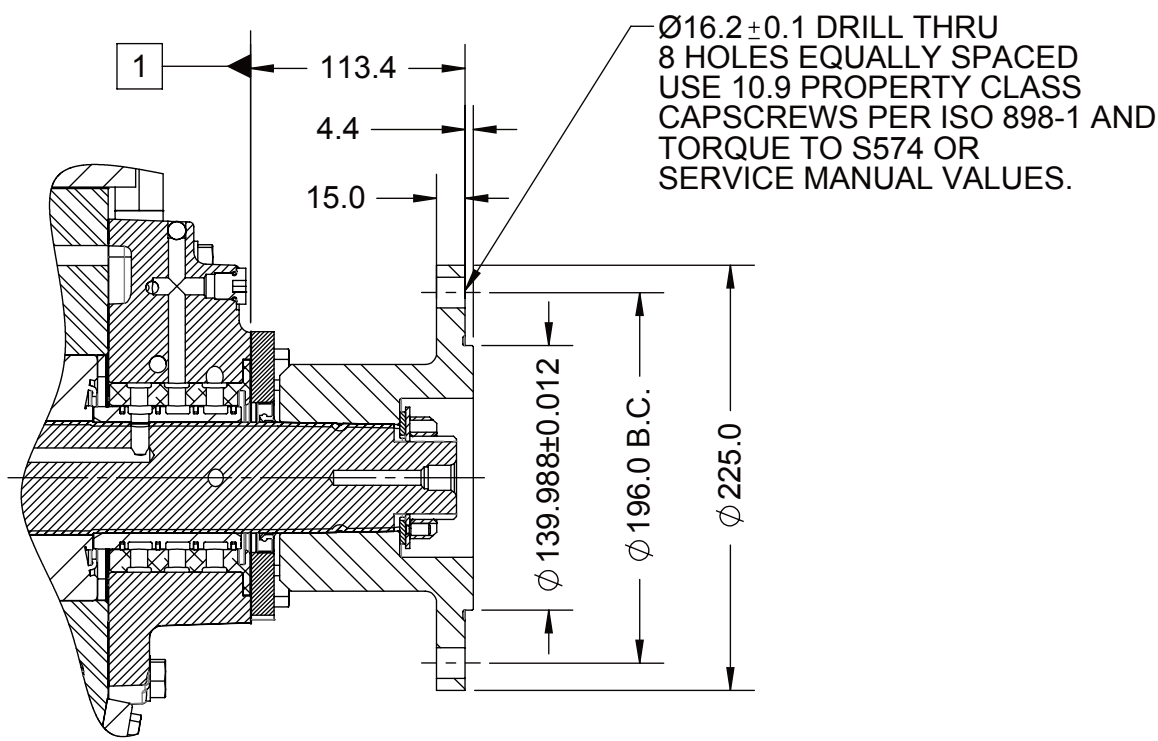
C. MANUAL DIRECTIONAL CONTROL VALVE MODE SWITCH

1. SWITCH IS NORMALLY CLOSED WHEN MANUAL DIRECTIONAL CONTROL VALVE IS IN CENTERED POSITION AND OPEN WHEN LEVER IS ACTUATED FROM CENTERED POSITION
2. CURRENT = 20 AMP MAX.
3. FOR WIRING SCHEMATIC REFER TO CONTROL DRAWING

- D. UNLESS OTHERWISE SPECIFIED FASTENER TORQUE VALUES AS PER S574 STANDARD

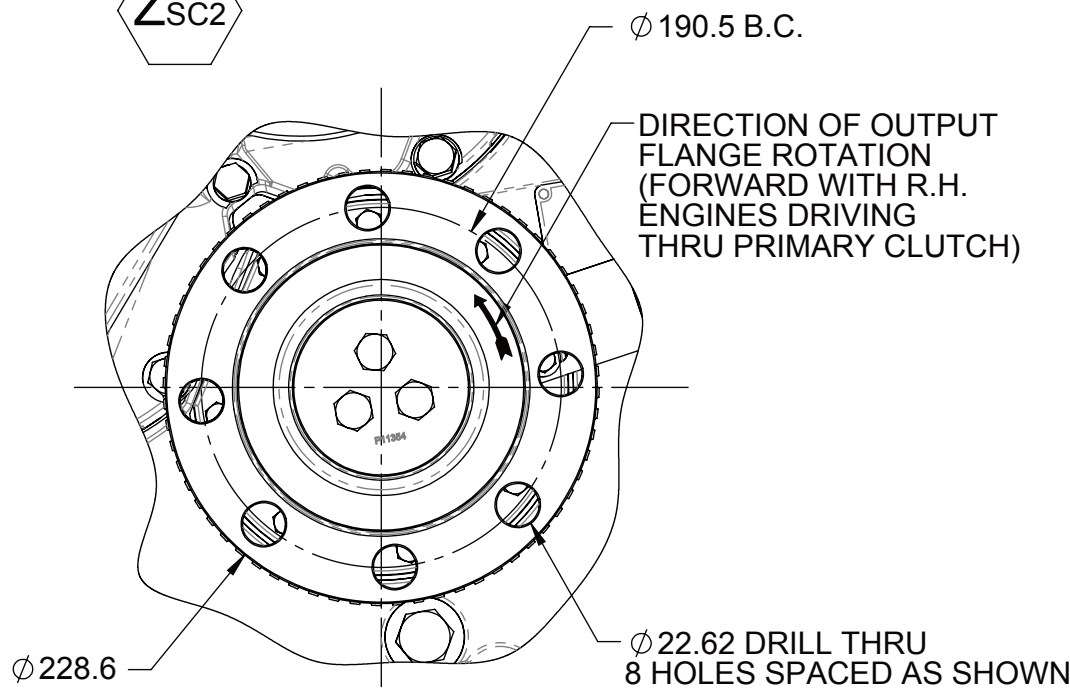
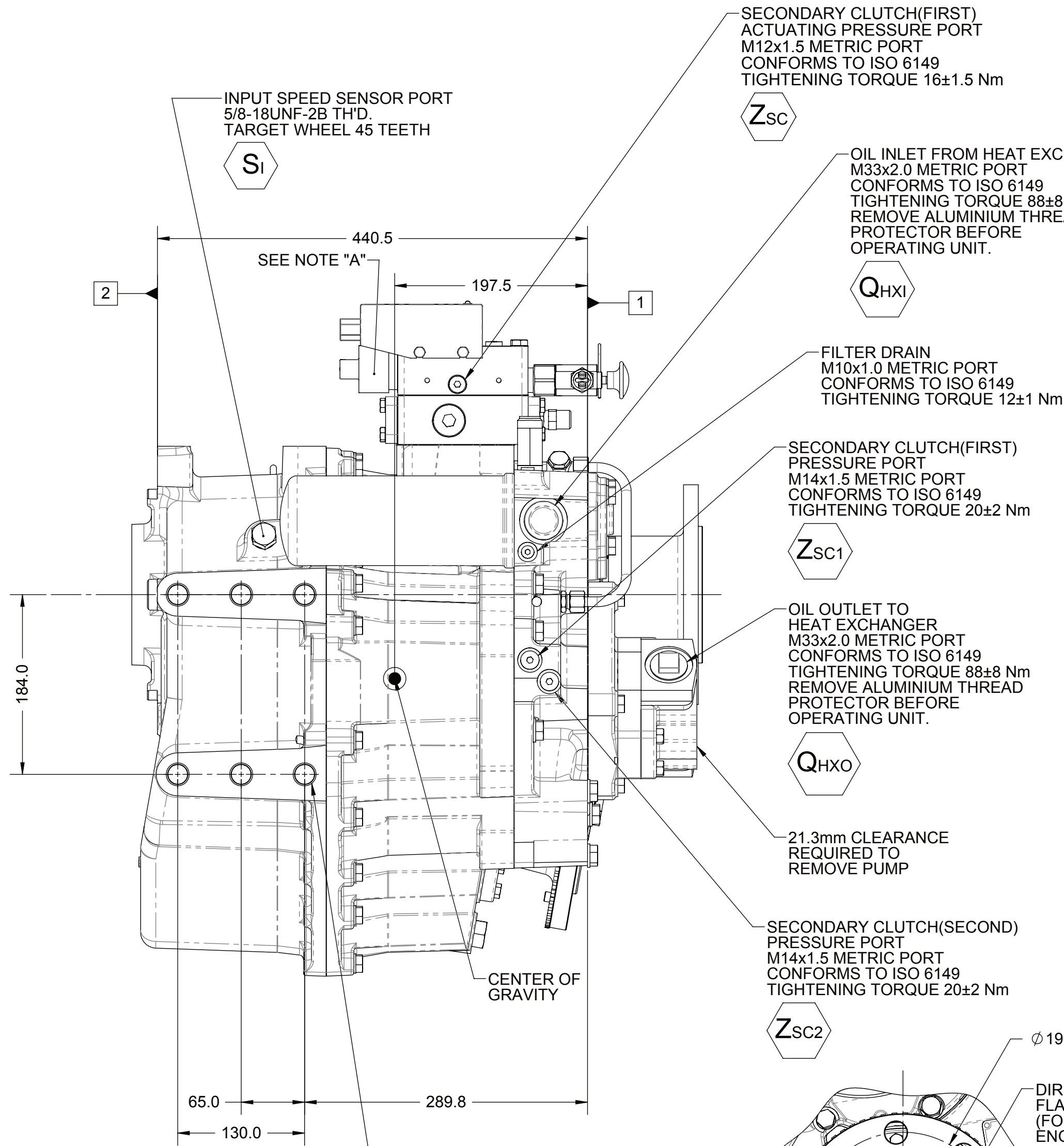
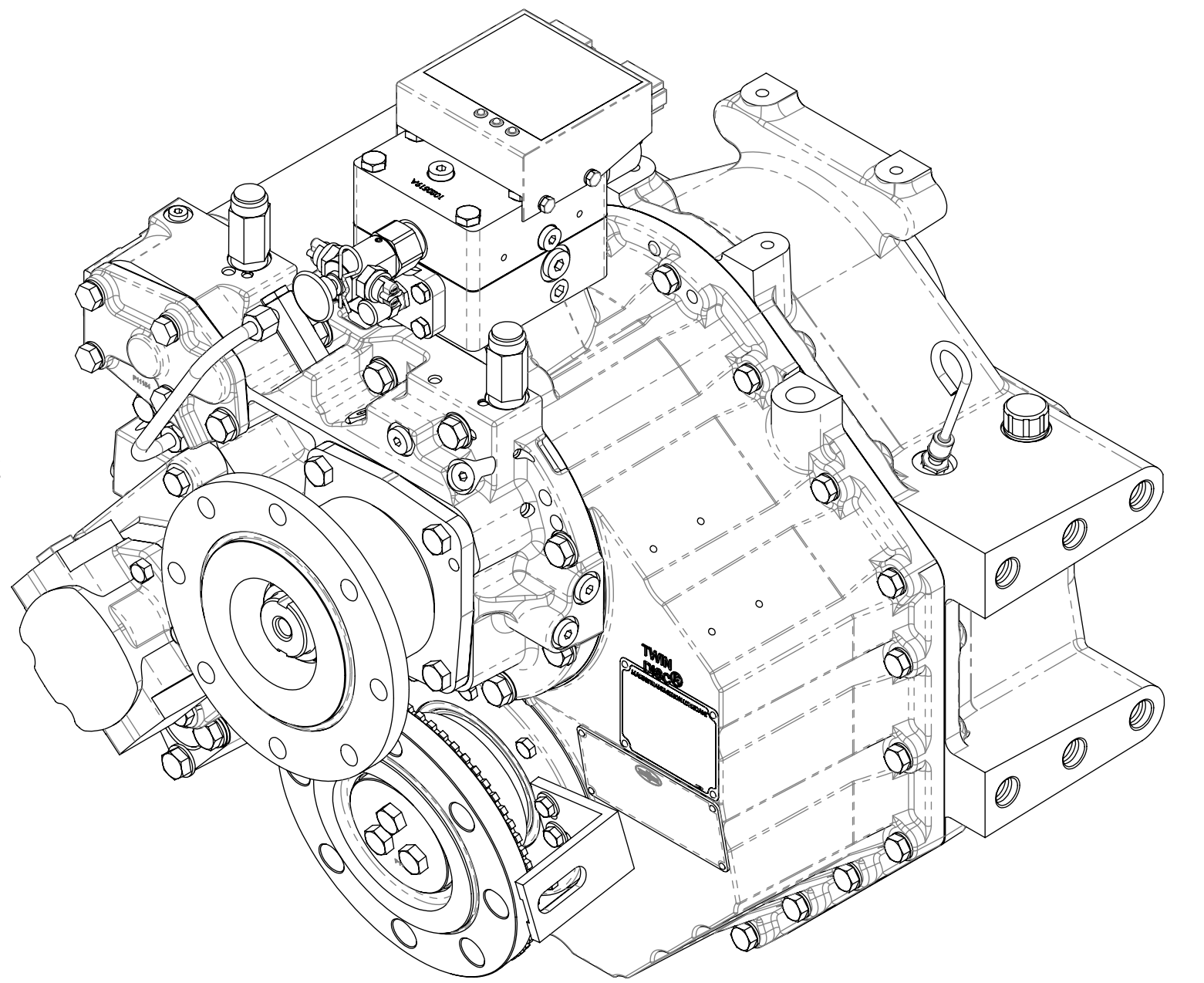
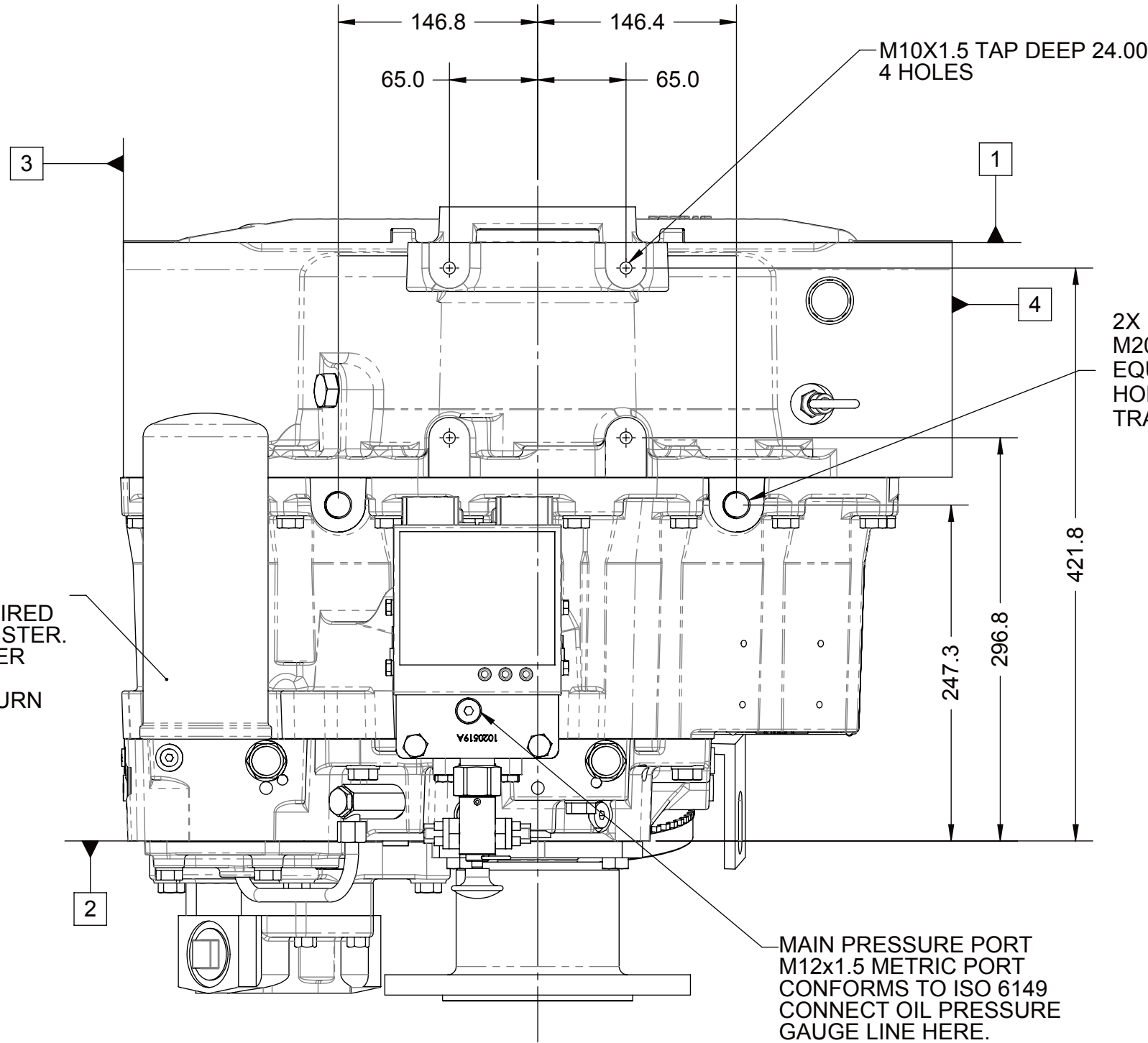
- E. ALL POINTS AVAILABLE FOR TESTING ARE CODED

- A. F. REFERENCE S930 FOR TWIN DISC REQUIREMENTS FOR PRESSURE AND TEMPERATURE ALARM LEVELS.

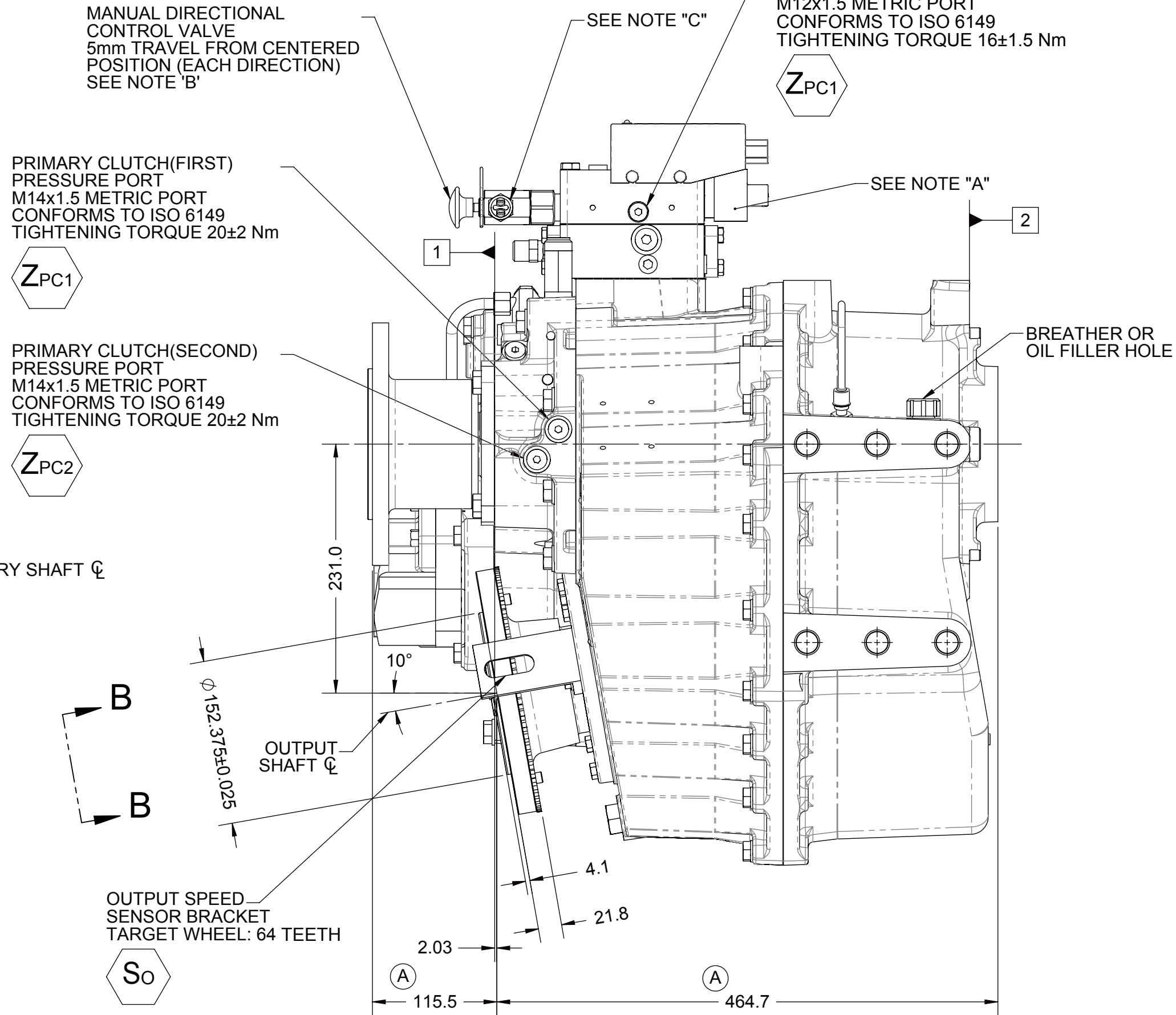
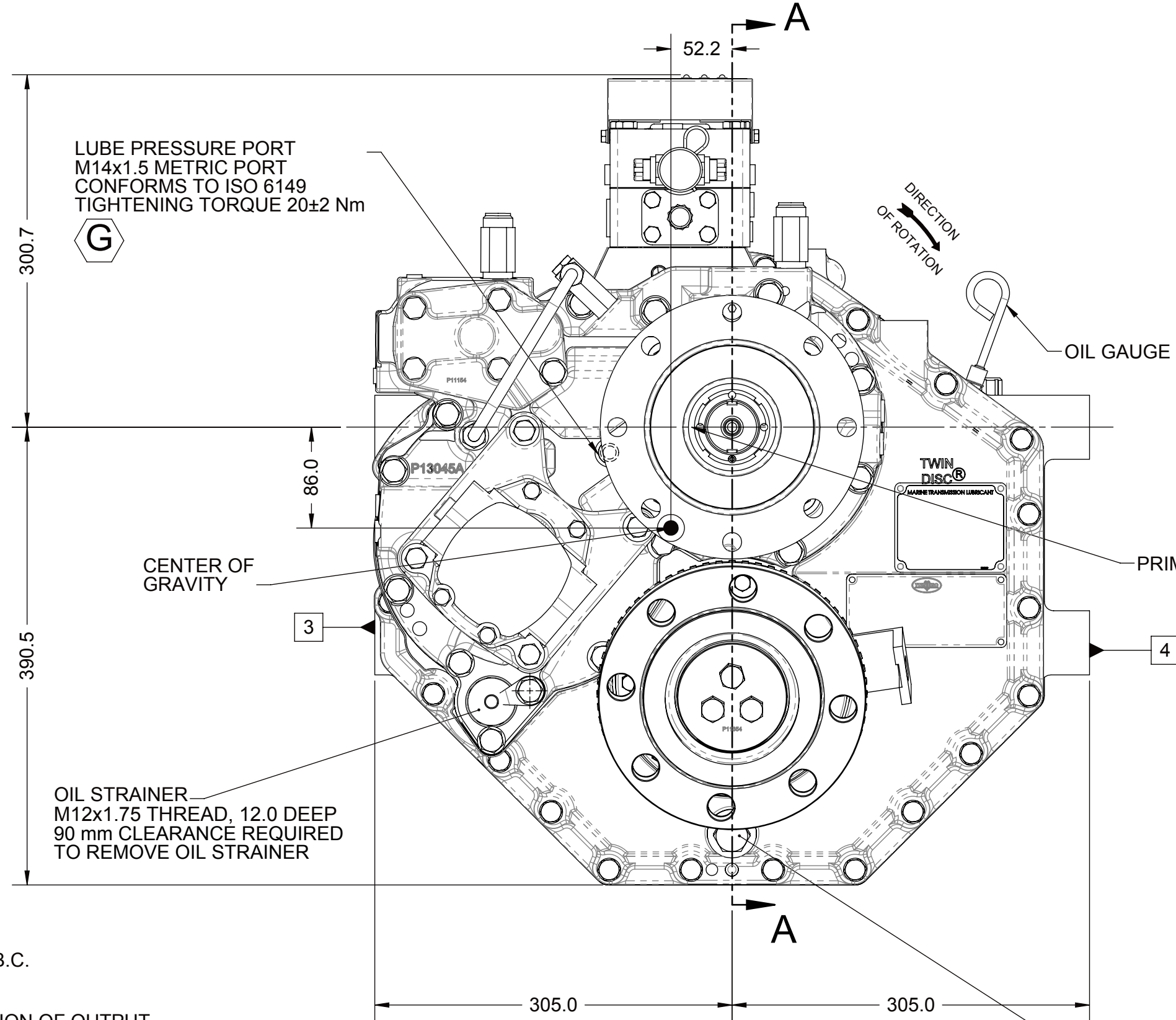


SECTION A-A

OIL FILTER  
19mm CLEARANCE REQUIRED TO REMOVE FILTER CANISTER. TIGHTEN FILTER CANISTER UNTIL IT STOPS. LOOSEN CANISTER 1/4 TURN



VIEW B-B



OIL DRAIN PLUG  
M33x2.0 THREAD  
CONFORMS TO ISO 6149  
15 mm CLEARANCE REQUIRED TO REMOVE PLUG

EQUIPMENT SHOWN:  
- MGX-5136RV PER 1027556 ASSEMBLY  
- GWB 587.50 FREE STANDING FLANGE  
- GP VALVE WITH EC050 CONTROL MODULE

FIRST USE ASSEMBLY:	WEIGHT: 266.8kg	THIRD ANGLE PROJECTION	MATERIAL:
FIRST USE MODEL:	WR: kg m³	UNLESS OTHERWISE SPECIFIED MACHINED DIMENSIONS	HEAT TREAT:
SIMILAR TO:		X X ±0.75	
		X X ±0.25	
		X X ±0.13	
		ALL ANGULAR TOLERANCES ±1°	
		GEOMETRIC TOLERANCING PER ASME Y14.5M 1994	

DATE: 12/11/2012	SCALE: 1:4
DRAWN BY: MG	CHECKED BY: JMF
APPROVED BY: ALC	DWG SIZE: A1

DESCRIPTION: INSTALLATION MGX-5136RV

ECNWF-24447	12/09/2014
REV	CHANGE NO. DATE
TWIN DISC	
RACINE, WI 53403 - USA	
1027609	
SHEET: 1 OF 1	REV: A