

- 1 INPUT GROUP REFERENCE PLANE
- 2 PTO GROUP MOUNTING FACE
- 3 LEFT MOUNTING BRACKET FACE
- 4 RIGHT MOUNTING BRACKET FACE

**NOTES:**

### A. PROPORTIONAL CONTROL VALVE OPERATION

- 1. WARNING - DO NOT CONNECT VALVE COIL DIRECTLY TO BATTERY/ POWER SUPPLY VOLTAGE**
- 2. OPERATION TO BE PERFORMED WITH ONLY TWIN-DISC CONTROL SYSTEM MODULES**

## B. MANUAL DIRECTIONAL CONTROL VALVE OPERATION

1. WITH MANUAL DIRECTIONAL CONTROL VALVE IN CENTERED POSITION PUSH TO ENGAGE PRIMARY CLUTCH
2. WITH MANUAL DIRECTIONAL CONTROL VALVE IN CENTERED POSITION PULL TO ENGAGE SECONDARY CLUTCH

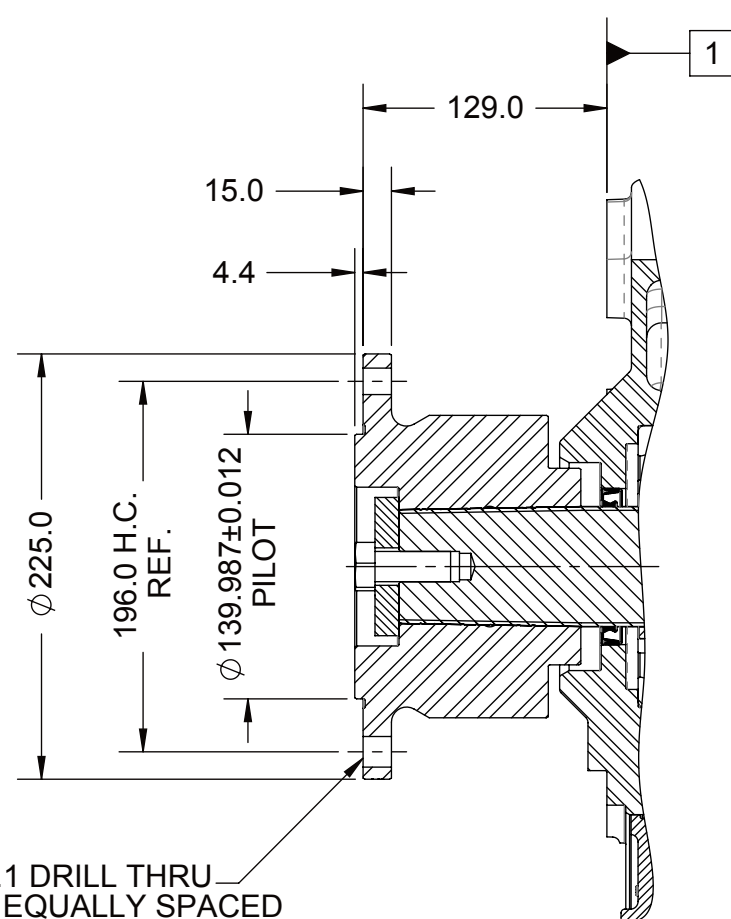
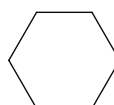
### C. MANUAL DIRECTIONAL CONTROL VALVE MODE SWITCH

1. SWITCH IS NORMALLY CLOSED WHEN MANUAL DIRECTIONAL CONTROL VALVE IS IN CENTERED POSITION AND OPEN WHEN LEVER IS ACTUATED FROM CENTERED POSITION
2. CURRENT = 20 AMP MAX.
3. FOR WIRING SCHEMATIC REFER TO CONTROL DRAWING

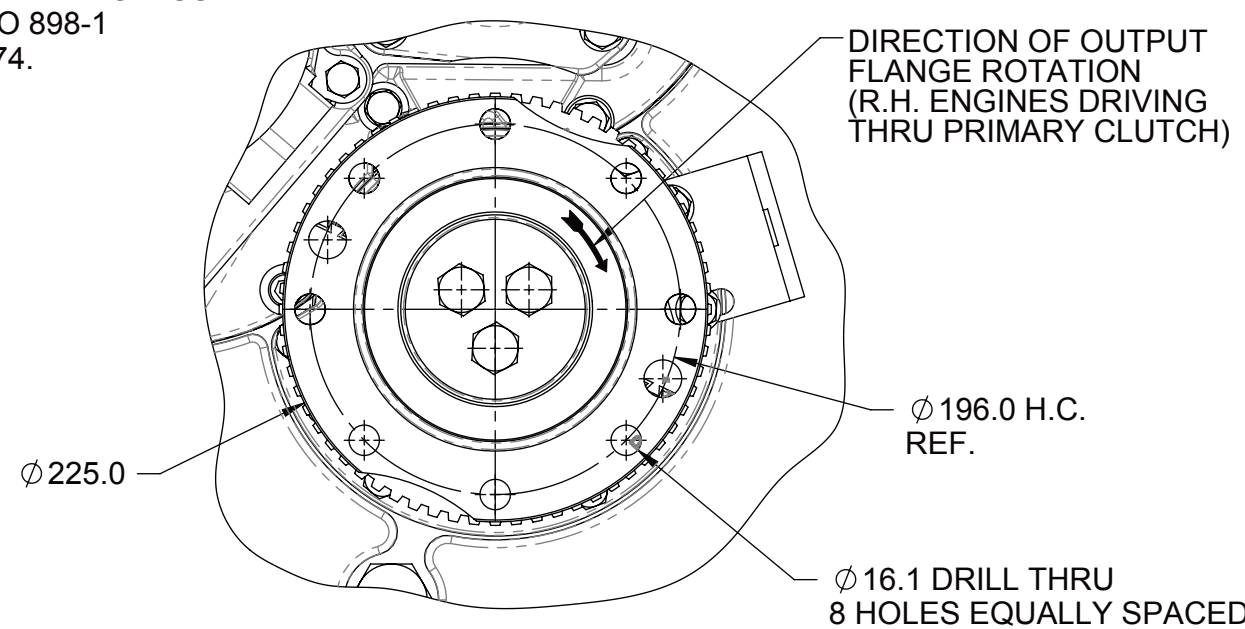
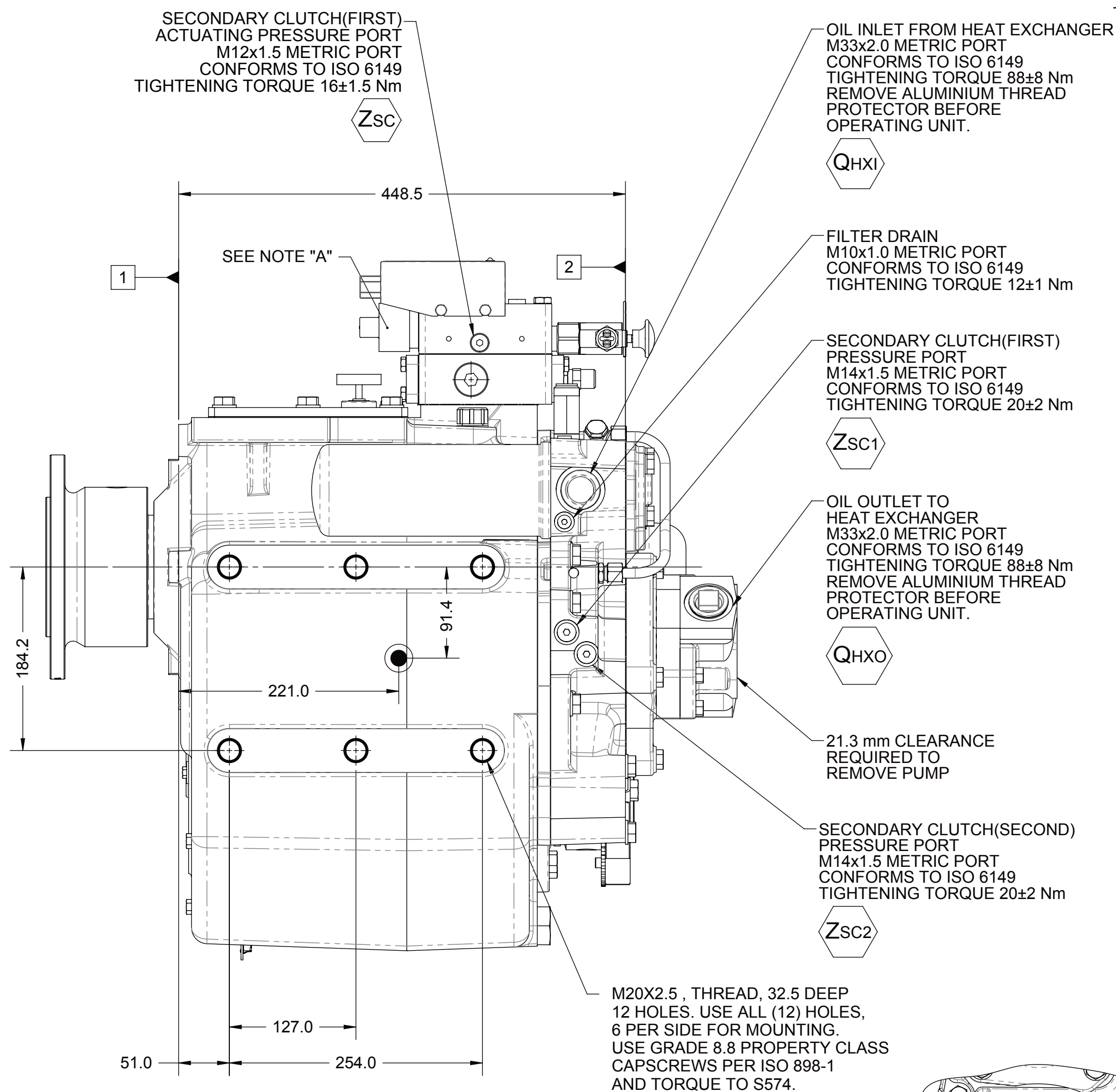
D. UNLESS OTHERWISE SPECIFIED FASTENER TORQUE  
VALUES AS PER S574 STANDARD

E. REFERENCE S930 FOR TWIN DISC REQUIREMENTS FOR PRESSURE AND TEMPERATURE ALARM LEVELS.

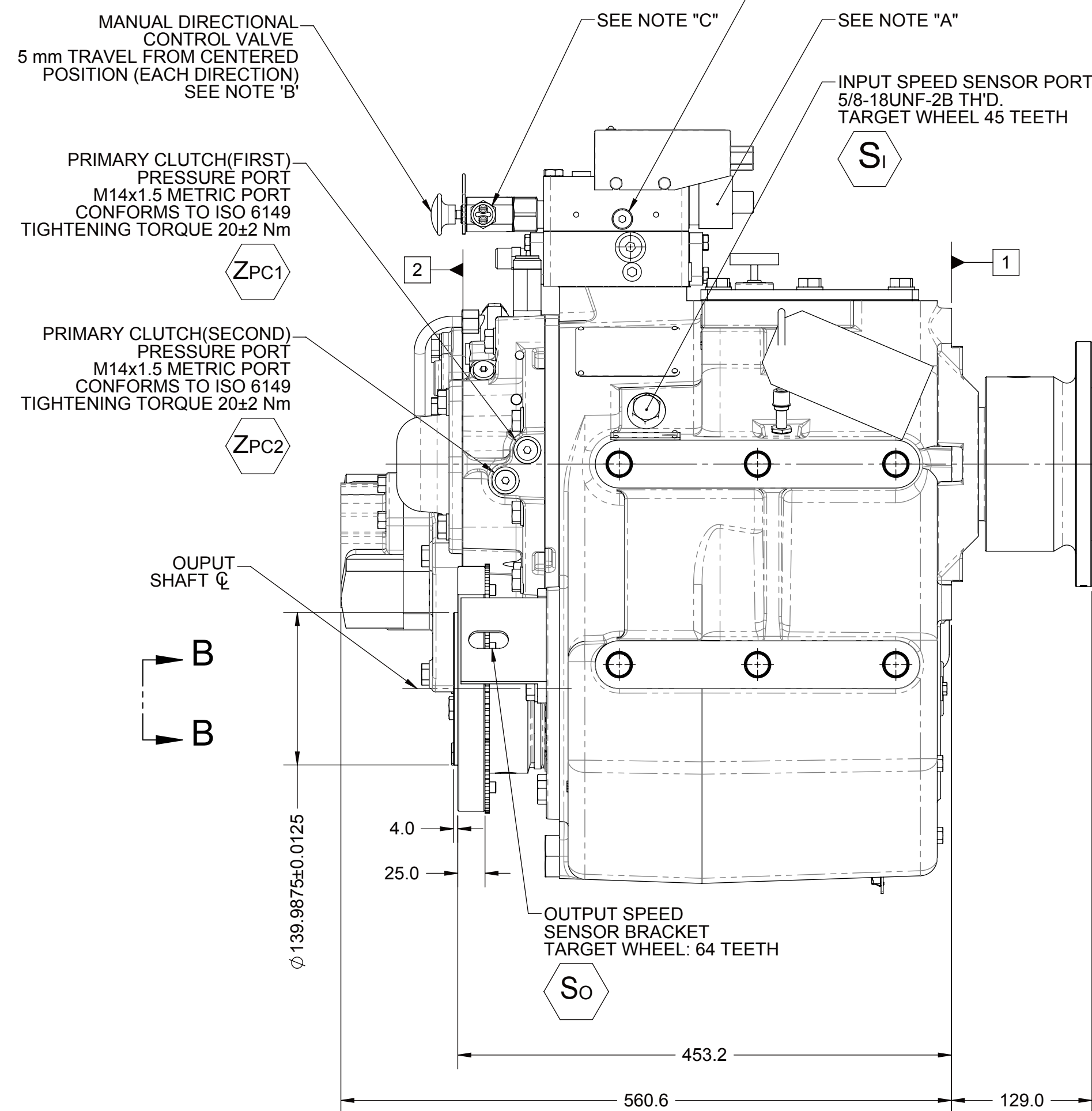
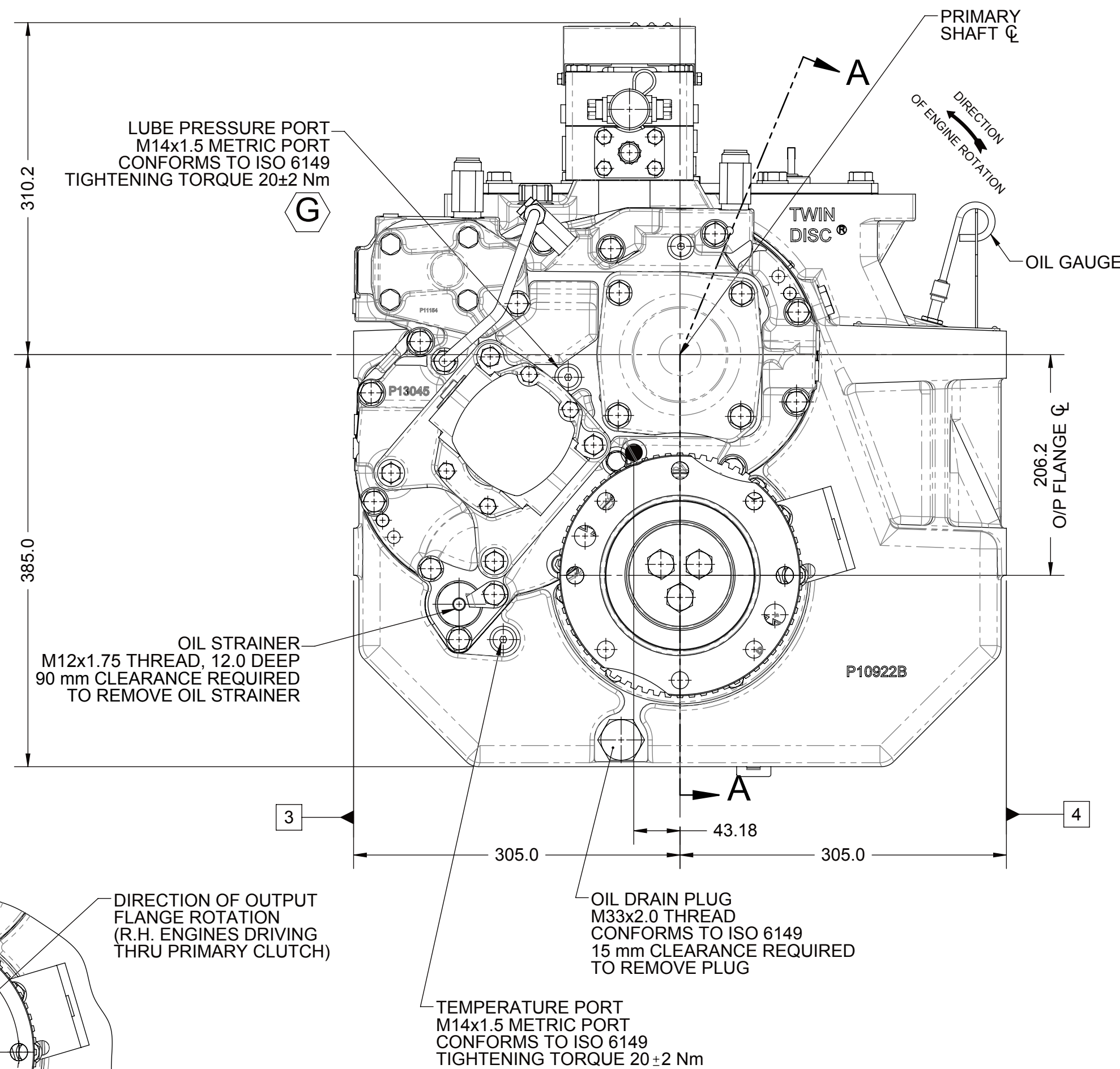
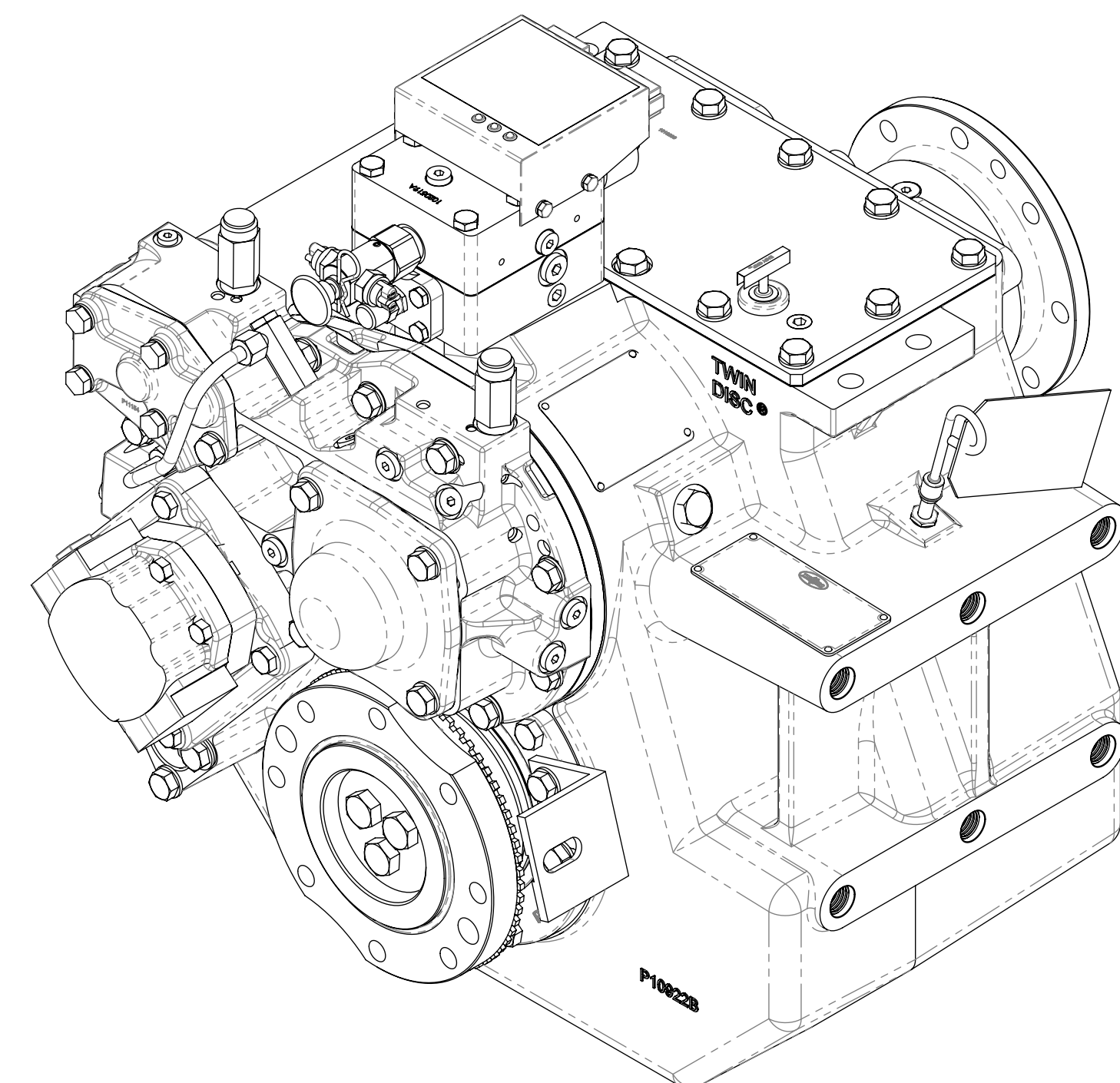
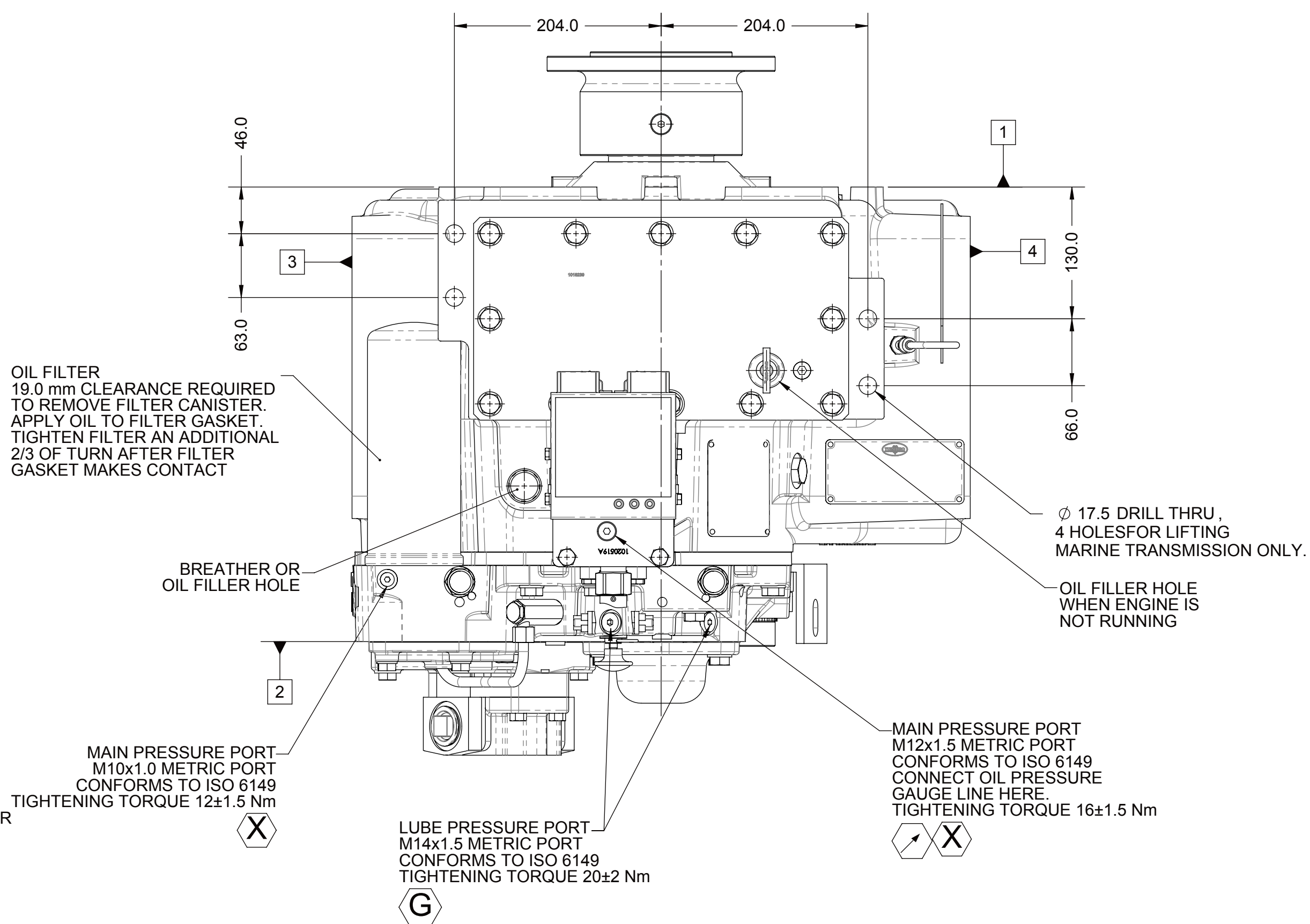
F. ALL POINTS AVAILABLE FOR TESTING CODED



## SECTION A-A



**VIEW B-B**



**EQUIPMENT SHOWN:**  
 - MGX-5146SC PER 1027661 ASSEMBLY  
 - GWB 587.50 INPUT FLANGE  
 - GP VALVE WITH EC050 PROFILE MODULE

-	NDWF-06484	02/04/2016
REV	CHANGE NO.	DATE

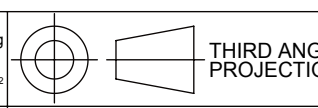


RACINE, WI 53403 - US

10276621

FIRST USE ASSEMBLY: 1027661  
FIRST USE MODEL: MGX-5146S  
SIMILAR TO:

WEIGHT:	315.5 kg
WR <sup>2</sup> :	kg·m <sup>2</sup>



SLE ON	MATERIAL:
	HEAT TREAT:

DATE:	02/01/2016
SCALE:	1:1

SCALE:  
1:4  
DRAWN BY:  
PM  
CHECKED BY:  
JME

JMF  
APPROVED BY:  
JMF

**METRIC**

NOTICE! THIS PRINT CONTAINS PROPRIETARY INFORMATION AND IS NOT TO BE USED IN ANY MANNER DETRIMENTAL TO THE INTEREST OF **TWIN DISC, INCORPORATED**

THIS NOTICE IS NOT INTENDED TO NULLIFY OR LIMIT RIGHTS

## INSTALLATION

JMF  
APPROVED BY:  
JMF

VG ZE:	A1	SHEET:	1 OF 1	R
-----------	----	--------	--------	---

F

E

D

C

B

A

4

4

5

•

1