

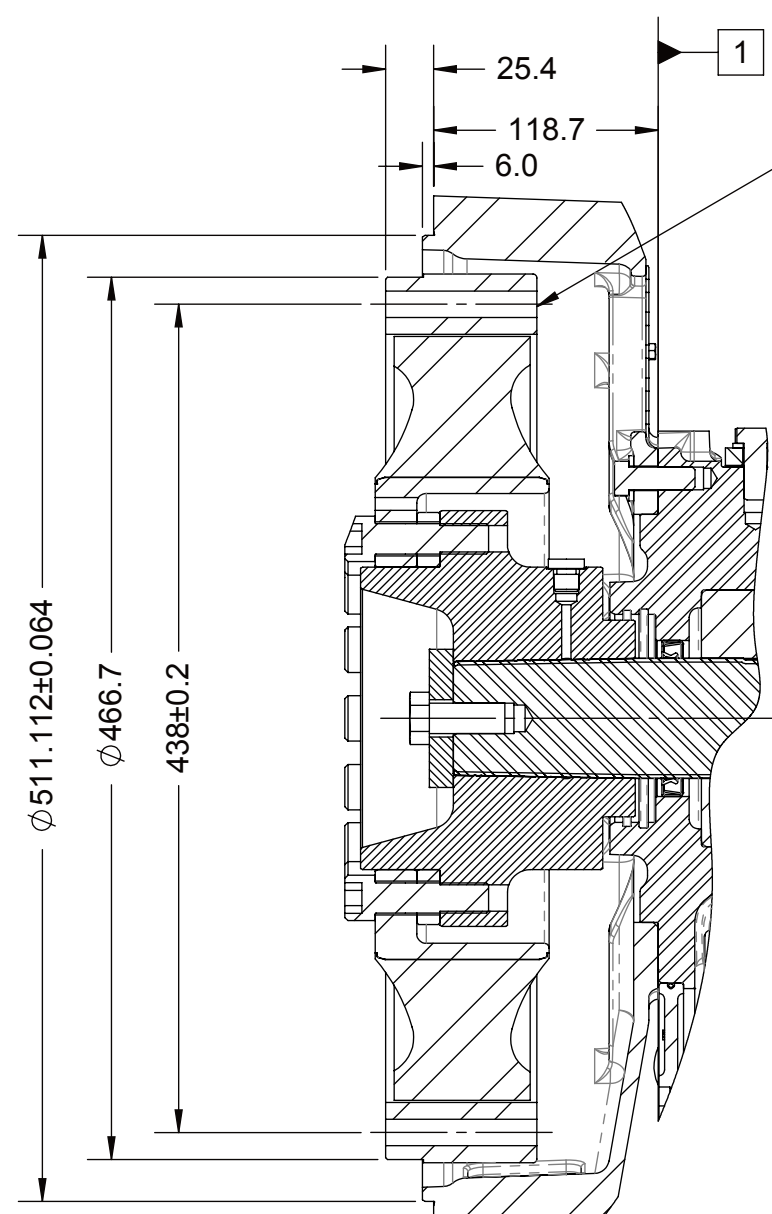
- 1 INPUT GROUP REFERENCE PLANE
2 PTO GROUP MOUNTING FACE
3 LEFT MOUNTING BRACKET FACE
4 RIGHT MOUNTING BRACKET FACE

NOTES:

A. UNLESS OTHERWISE SPECIFIED FASTENER TORQUE VALUES AS PER S574 STANDARD

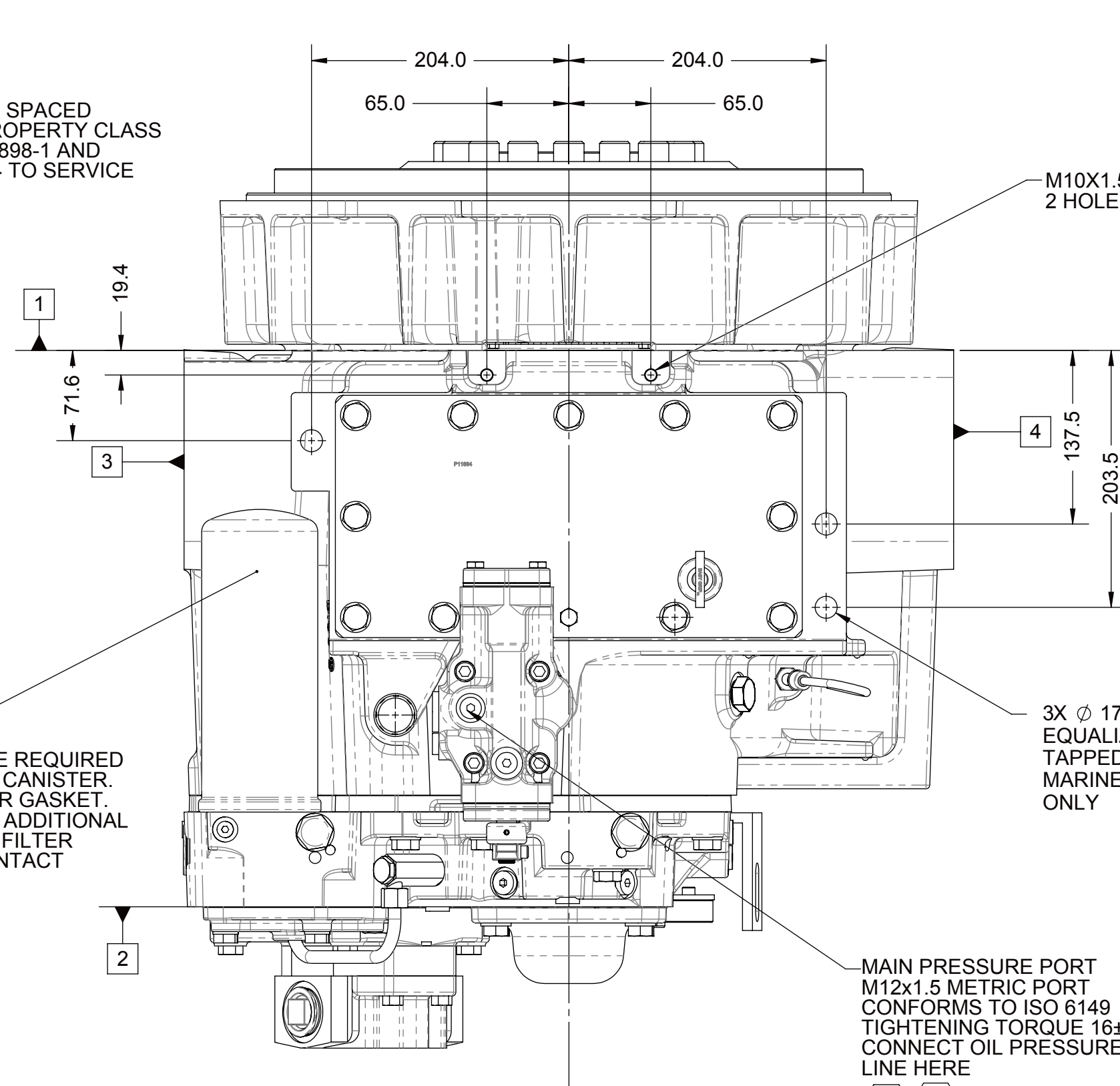
B. ALL POINTS AVAILABLE FOR TESTING CODED

C. REFERENCE S930 FOR TWIN DISC REQUIREMENTS FOR PRESSURE AND TEMPERATURE ALARM LEVELS.



SECTION A-A

OIL FILTER
19.0 mm CLEARANCE REQUIRED TO REMOVE FILTER CANISTER. APPLY OIL TO FILTER GASKET. TIGHTEN FILTER AN ADDITIONAL 2/3 OF TURN AFTER FILTER GASKET MAKES CONTACT

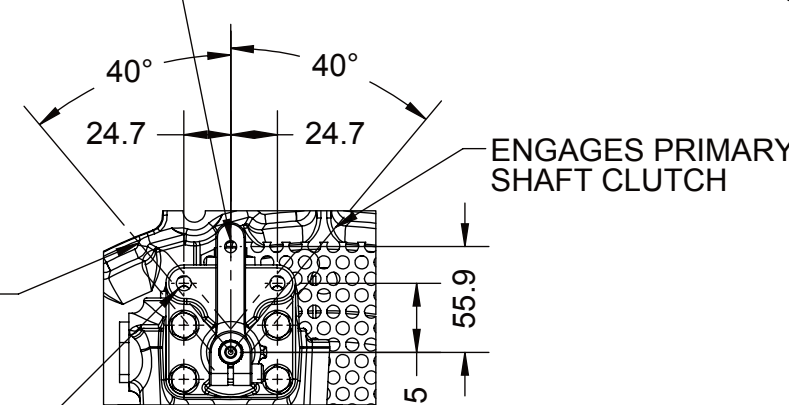


M10x1.5 TAP DEEP 24.00
2 HOLES

3X ϕ 17.50 THRU
EQUALIZE LOAD ON BOTH
TAPPED HOLES TO LIFT
MARINE TRANSMISSION
ONLY

MAIN PRESSURE PORT
M12x1.5 METRIC PORT
CONFORMS TO ISO 6149
TIGHTENING TORQUE 16±1.5 Nm
CONNECT OIL PRESSURE GAUGE
LINE HERE

NEUTRAL POSITION



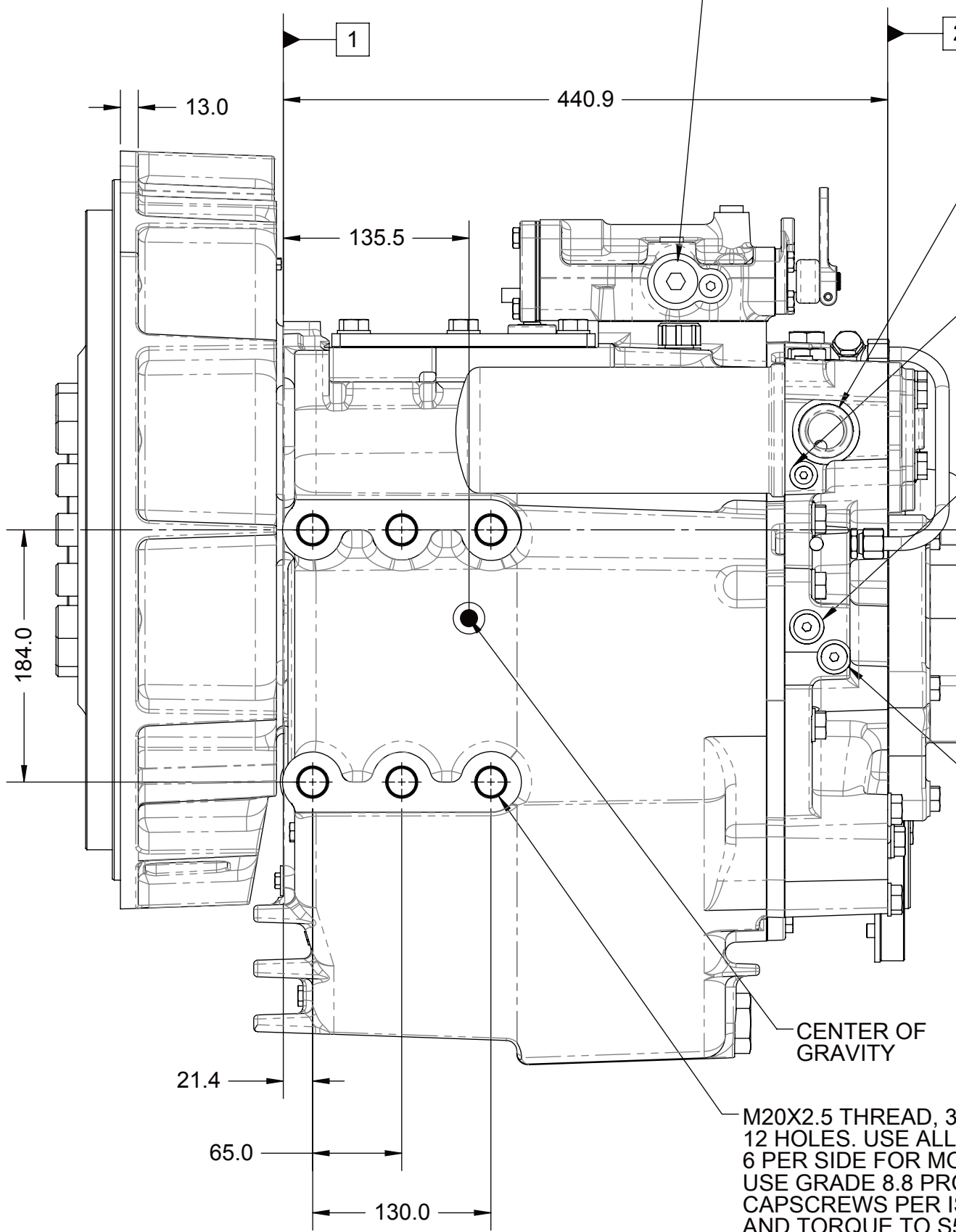
ENGAGES SECONDARY
SHAFT CLUTCH

2X ϕ 6.8 THRU ALL
M8x1.25 - 6H THRU ALL

VIEW C-C

ENGAGES PRIMARY
SHAFT CLUTCH

INPUT SPEED SENSOR PORT
5/8-18UNF-2B TH'D
TARGET WHEEL 45 TEETH



MAIN PRESSURE PORT
M27x2.0 METRIC PORT
CONFORMS TO ISO 6149
TIGHTENING TORQUE 75±7 Nm

OIL INLET FROM HEAT EXCHANGER
M33x2.0 METRIC PORT
CONFORMS TO ISO 6149
TIGHTENING TORQUE 88±8 Nm
REMOVE ALUMINIUM THREAD
PROTECTOR BEFORE
OPERATING UNIT.

FILTER DRAIN
M10x1.0 METRIC PORT
CONFORMS TO ISO 6149
TIGHTENING TORQUE 12±1 Nm

SECONDARY CLUTCH
PRESSURE PORT
M14x1.5 METRIC PORT
CONFORMS TO ISO 6149
TIGHTENING TORQUE 20±2 Nm

OIL OUTLET TO HEAT EXCHANGER
M33x2.0 METRIC PORT
CONFORMS TO ISO 6149
TIGHTENING TORQUE 88±8 Nm
REMOVE ALUMINIUM THREAD
PROTECTOR BEFORE
OPERATING UNIT.

21.3mm CLEARANCE
REQUIRED TO
REMOVE PUMP

SECONDARY CLUTCH
PRESSURE PORT
M14x1.5 METRIC PORT
CONFORMS TO ISO 6149
TIGHTENING TORQUE 20±2 Nm

M20x2.5 THREAD, 32.5 DEEP
12 HOLES, USE ALL (12) HOLES,
6 PER SIDE FOR MOUNTING.
USE GRADE 8.8 PROPERTY CLASS
CAPSCREWS PER ISO 898-1
AND TORQUE TO S574.

ϕ 22.62 DRILL THRU
8 HOLES SPACED AS SHOWN

ϕ 228.6

ϕ 190.5 H.C.
(REF.)

DIRECTION OF OUTPUT
FLANGE ROTATION
(FORWARD WITH R.H.
ENGINES DRIVING
THRU PRIMARY CLUTCH)

LUBE PRESSURE PORT
M14x1.5 METRIC PORT
CONFORMS TO ISO 6149
TIGHTENING TORQUE 20±2 Nm

BREATHER OR
OIL FILLER HOLE

PRIMARY
SHAFT ϕ

DIRECTION
OF ENGINE ROTATION

OIL GAUGE

CENTER OF
GRAVITY

OIL STRAINER
M12x1.75 THREAD, 12.0 DEEP
90 mm CLEARANCE REQUIRED
TO REMOVE OIL STRAINER

OIL DRAIN PLUG
M33x2.0 THREAD
CONFORMS TO ISO 6149
15 mm CLEARANCE REQUIRED
TO REMOVE PLUG

PRIMARY CLUTCH
PRESSURE PORT
M14x1.5 METRIC PORT
CONFORMS TO ISO 6149
TIGHTENING TORQUE 20±2 Nm

PRIMARY CLUTCH
PRESSURE PORT
M14x1.5 METRIC PORT
CONFORMS TO ISO 6149
TIGHTENING TORQUE 20±2 Nm

OUTPUT SPEED
SENSOR BRACKET
TARGET WHEEL: 64 TEETH

A

FIRST USE ASSEMBLY:	WEIGHT: 297.2kg	THIRD ANGLE PROJECTION	MATERIAL:
FIRST USE MODEL:	WR:	UNLESS OTHERWISE SPECIFIED MACHINED DIMENSIONS X X X X X X X ALL ANGULAR TOLERANCES ±1° GEOMETRIC TOLERANCING PER ASME Y14.5M 1994	HEAT TREAT:
SIMILAR TO:			
METRIC			
NOTICE: THIS PRINT CONTAINS PROPRIETARY INFORMATION AND IS NOT TO BE USED IN ANY MANNER DETRIMENTAL TO THE INTEREST OF TWIN DISC, INCORPORATED			
THIS NOTICE IS NOT INTENDED TO NULLIFY OR LIMIT RIGHTS GRANTED TO THE U.S. GOVERNMENT OR OTHERS BY CONTRACT.			

EQUIPMENT SHOWN:
- MG-5136SC PER 1027560 ASSEMBLY
- SAE #1/SAE 355 VULCAN VL-3011S
- MECHANICAL CONTORL VALVE LESS TROLLING VALVE

INSTALLATION
MG-5136SC

DATE:	12/11/2012
SCALE:	1:4
DRAWN BY:	MG
CHECKED BY:	JMF
APPROVED BY:	ALC

A	ECNWF-24447	11/25/2014
REV	CHANGE NO.	DATE
TWIN DISC		
RACINE, WI 53403 - USA		
1027762		
DWG	SHEET:	REV:
SIZE: A1	1 OF 1	A