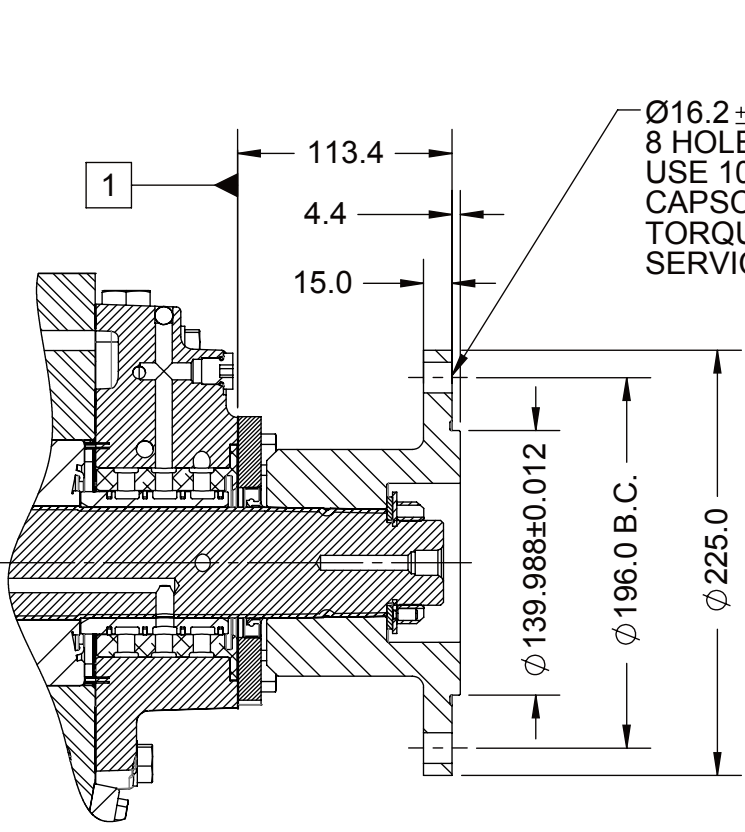


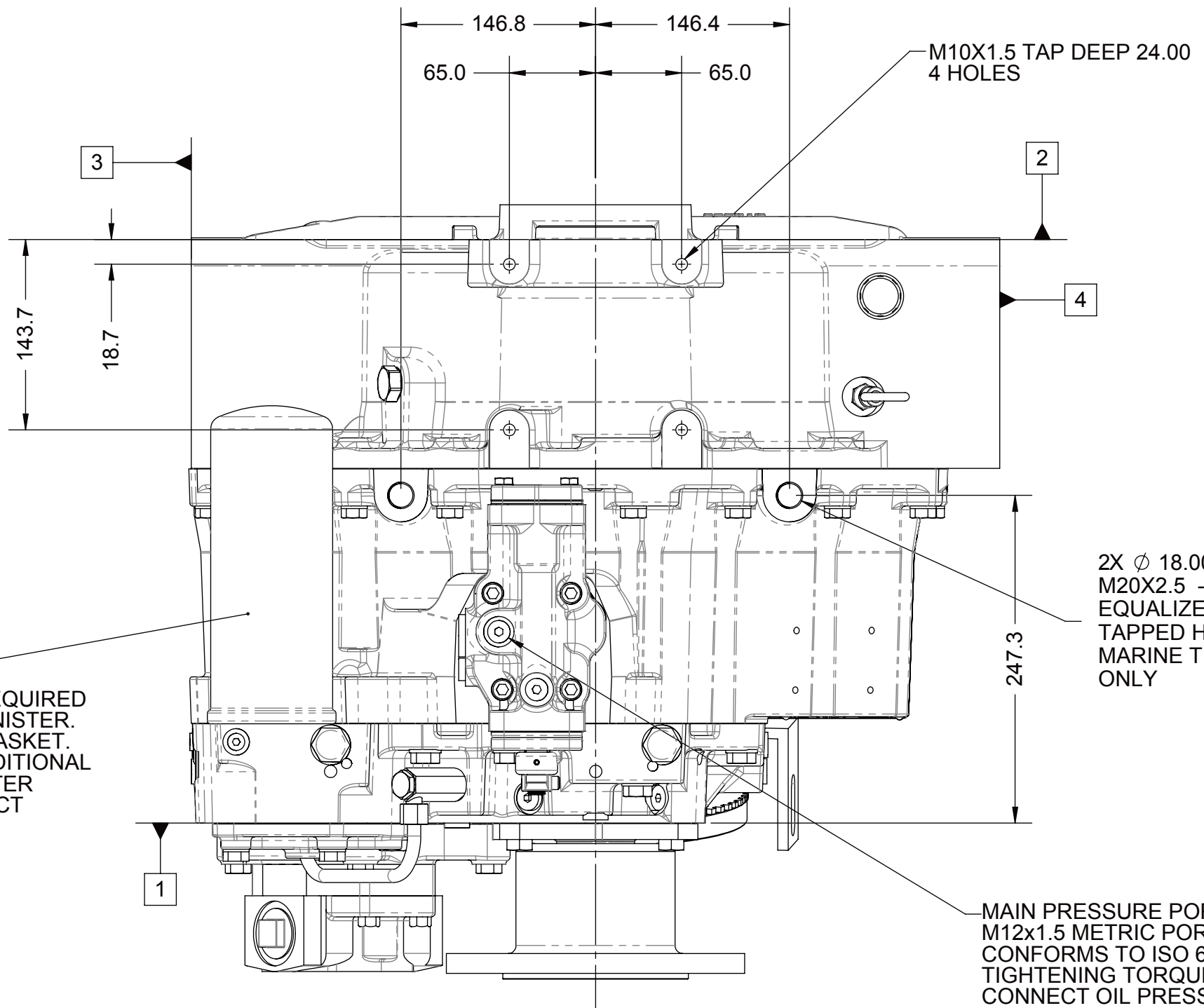
- 1 INPUT GROUP REFERENCE PLANE
2 PTO GROUP MOUNTING FACE
3 LEFT MOUNTING BRACKET FACE
4 RIGHT MOUNTING BRACKET FACE

NOTES:
A. UNLESS OTHERWISE SPECIFIED FASTENER TORQUE VALUES AS PER S574 STANDARD
B. ALL POINTS AVAILABLE FOR TESTING CODED
C. REFERENCE S930 FOR TWIN DISC REQUIREMENTS FOR PRESSURE AND TEMPERATURE ALARM LEVELS.

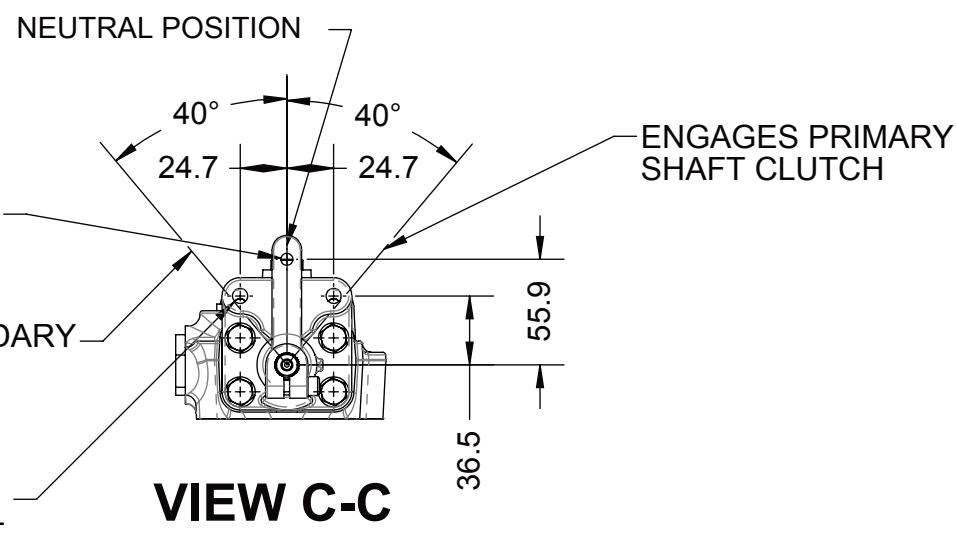
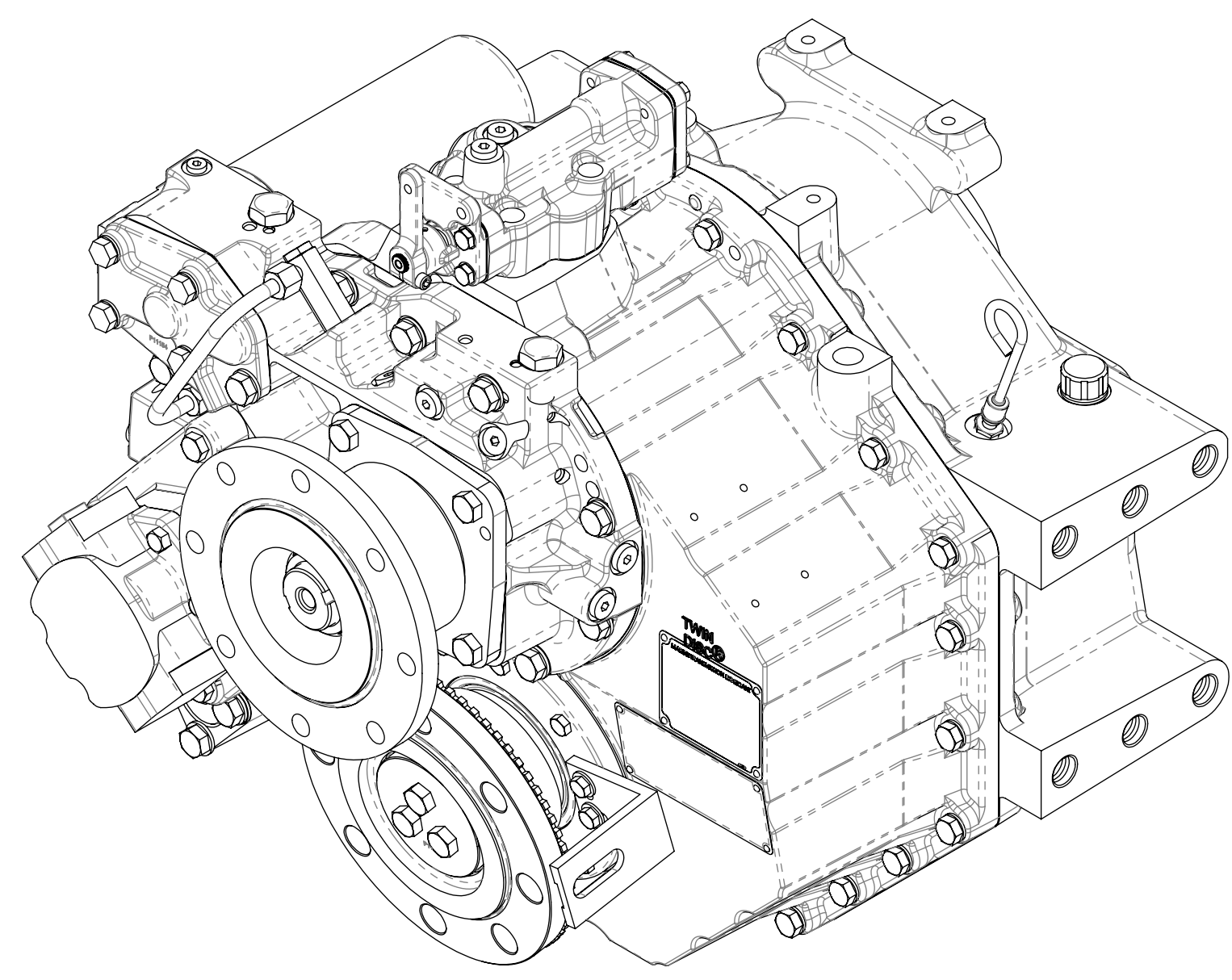


SECTION A-A

OIL FILTER
19.0 mm CLEARANCE REQUIRED TO REMOVE FILTER CANISTER. APPLY OIL TO FILTER GASKET. TIGHTEN FILTER AN ADDITIONAL 2/3 OF TURN AFTER FILTER GASKET MAKES CONTACT



MAIN PRESSURE PORT
M12x1.5 METRIC PORT CONFORMS TO ISO 6149 TIGHTENING TORQUE 16±1.5 Nm CONNECT OIL PRESSURE GAUGE LINE HERE



VIEW C-C

INPUT SPEED SENSOR PORT
5/8-18UNF-2B THD. TARGET WHEEL 45 TEETH

MAIN PRESSURE PORT
M27x2.0 METRIC PORT CONFORMS TO ISO 6149 TIGHTENING TORQUE 75±7 Nm

OIL INLET FROM HEAT EXCHANGER
M33x2.0 METRIC PORT CONFORMS TO ISO 6149 TIGHTENING TORQUE 88±8 Nm REMOVE ALUMINIUM THREAD PROTECTOR BEFORE OPERATING UNIT.

QHXI

FILTER DRAIN
M10x1.0 METRIC PORT CONFORMS TO ISO 6149 TIGHTENING TORQUE 12±1 Nm

SECONDARY CLUTCH PRESSURE PORT
M14x1.5 METRIC PORT CONFORMS TO ISO 6149 TIGHTENING TORQUE 20±2 Nm

ZSC

OIL OUTLET TO HEAT EXCHANGER
M33x2.0 METRIC PORT CONFORMS TO ISO 6149 TIGHTENING TORQUE 88±8 Nm REMOVE ALUMINIUM THREAD PROTECTOR BEFORE OPERATING UNIT.

QH XO

21.3 mm CLEARANCE REQUIRED TO REMOVE PUMP

SECONDARY CLUTCH PRESSURE PORT
M14x1.5 METRIC PORT CONFORMS TO ISO 6149 TIGHTENING TORQUE 20±2 Nm

ZSC

M20X2.5 THREAD, 32.5 DEEP 12 HOLES. USE ALL (12) HOLES, 6 PER SIDE FOR MOUNTING. USE GRADE 8.8 PROPERTY CLASS CAPSCREWS PER ISO 898-1 AND TORQUE TO S574.

Ø 190.5 H.C. REF.

DIRECTION OF OUTPUT FLANGE ROTATION (FORWARD WITH R.H. ENGINES DRIVING THRU PRIMARY CLUTCH)

Ø 228.6

Ø 22.62 DRILL THRU 8 HOLES SPACED AS SHOWN

VIEW B-B

LUBE PRESSURE PORT
M14x1.5 METRIC PORT CONFORMS TO ISO 6149 TIGHTENING TORQUE 20±2 Nm

G

CENTER OF GRAVITY

OIL STRAINER
M12x1.75 THREAD, 12.0 DEEP 90 mm CLEARANCE REQUIRED TO REMOVE OIL STRAINER

PRIMARY CLUTCH PRESSURE PORT
M14x1.5 METRIC PORT CONFORMS TO ISO 6149 TIGHTENING TORQUE 20±2 Nm

ZPC

PRIMARY CLUTCH PRESSURE PORT
M14x1.5 METRIC PORT CONFORMS TO ISO 6149 TIGHTENING TORQUE 20±2 Nm

ZPC

OIL DRAIN PLUG
M33x2.0 THREAD CONFORMS TO ISO 6149 15 mm CLEARANCE REQUIRED TO REMOVE PLUG

OUTPUT SPEED SENSOR BRACKET TARGET WHEEL: 64 TEETH

So

EQUIPMENT SHOWN:
- MG-5136RV PER 1027561 ASSEMBLY
- GWB 587.50 FREE STANDING FLANGE
- MECHANICAL CONTORL VALVE LESS TROLLING VALVE

FIRST USE ASSEMBLY: FIRST USE MODEL: SIMILAR TO:		WEIGHT: 260.1kg WR: kg m³	THIRD ANGLE PROJECTION	MATERIAL: HEAT TREAT:	DATE: 12/12/2012 SCALE: 1:4 DRAWN BY: MG CHECKED BY: JMF APPROVED BY: ALC	DESCRIPTION: INSTALLATION MG-5136RV	DWG SIZE: A1	SHEET: 1 OF 1	REV: A.0004
METRIC									

NOTES: THIS PRINT CONTAINS PROPRIETARY INFORMATION AND IS NOT TO BE USED IN ANY MANNER DETRIMENTAL TO THE INTEREST OF TWIN DISC, INCORPORATED

THIS NOTICE IS NOT INTENDED TO NULLIFY OR LIMIT RIGHTS GRANTED TO THE U.S. GOVERNMENT OR OTHERS BY CONTRACT.

UNLESS OTHERWISE SPECIFIED MACHINED DIMENSIONS
X.X ±0.75
X.XX ±0.25
X.XXX ±0.15
ALL ANGULAR TOLERANCES ±1°
GEOMETRIC TOLERANCING PER ASME Y14.5M 1994

REV: A.0004NDWF-03804 01/02/2013

TWIN DISC
RACINE, WI 53403 - USA

1027763