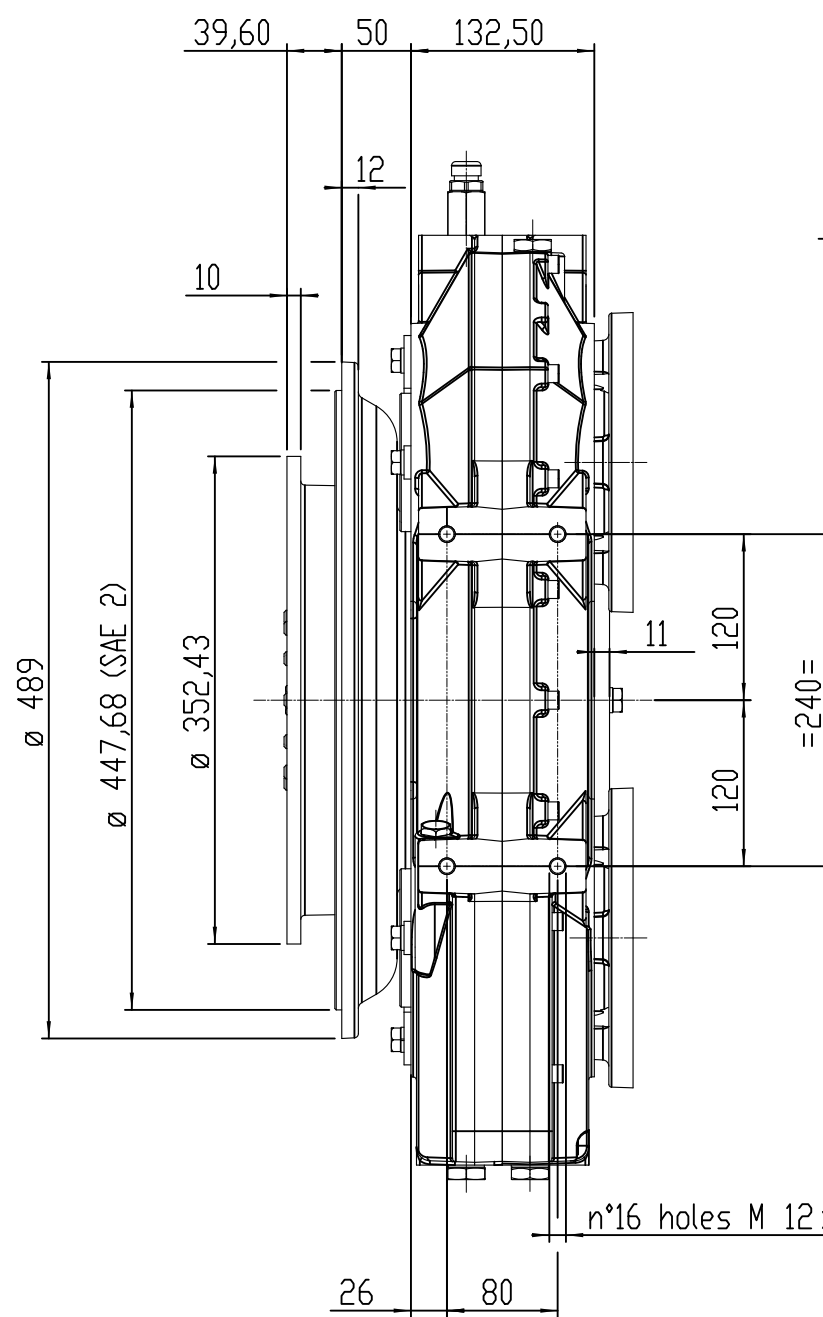
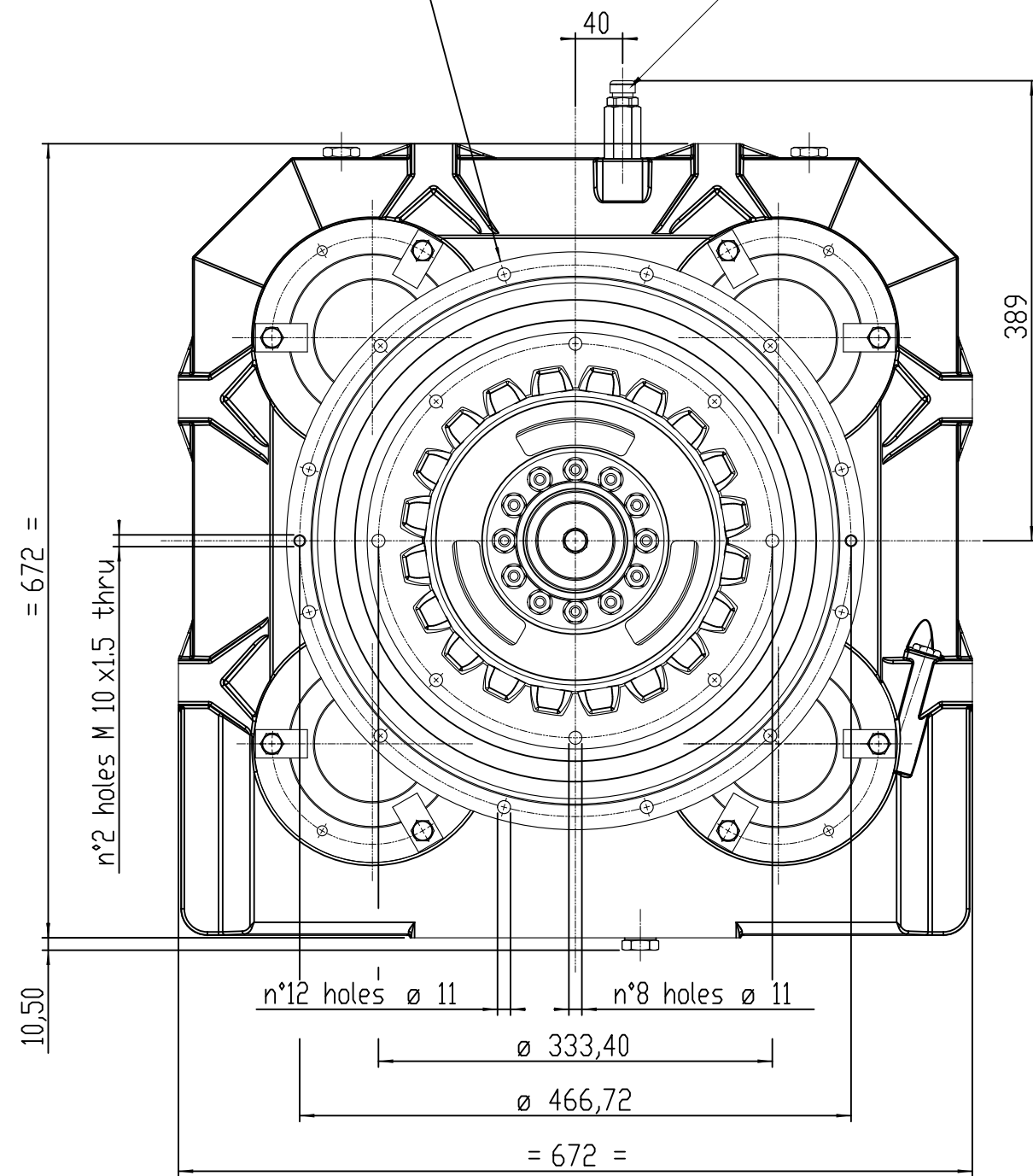


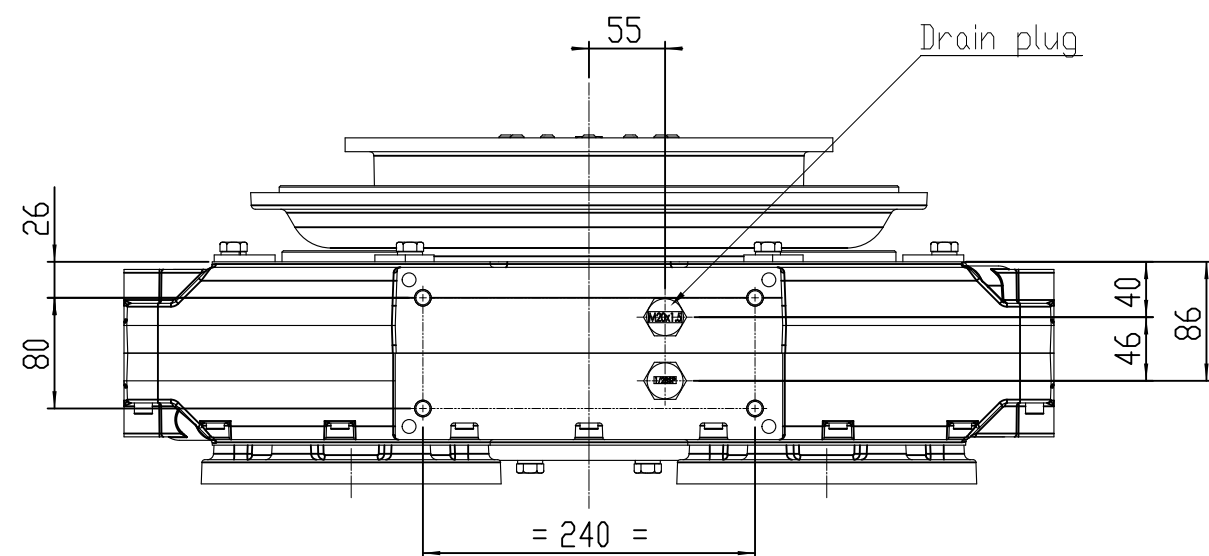
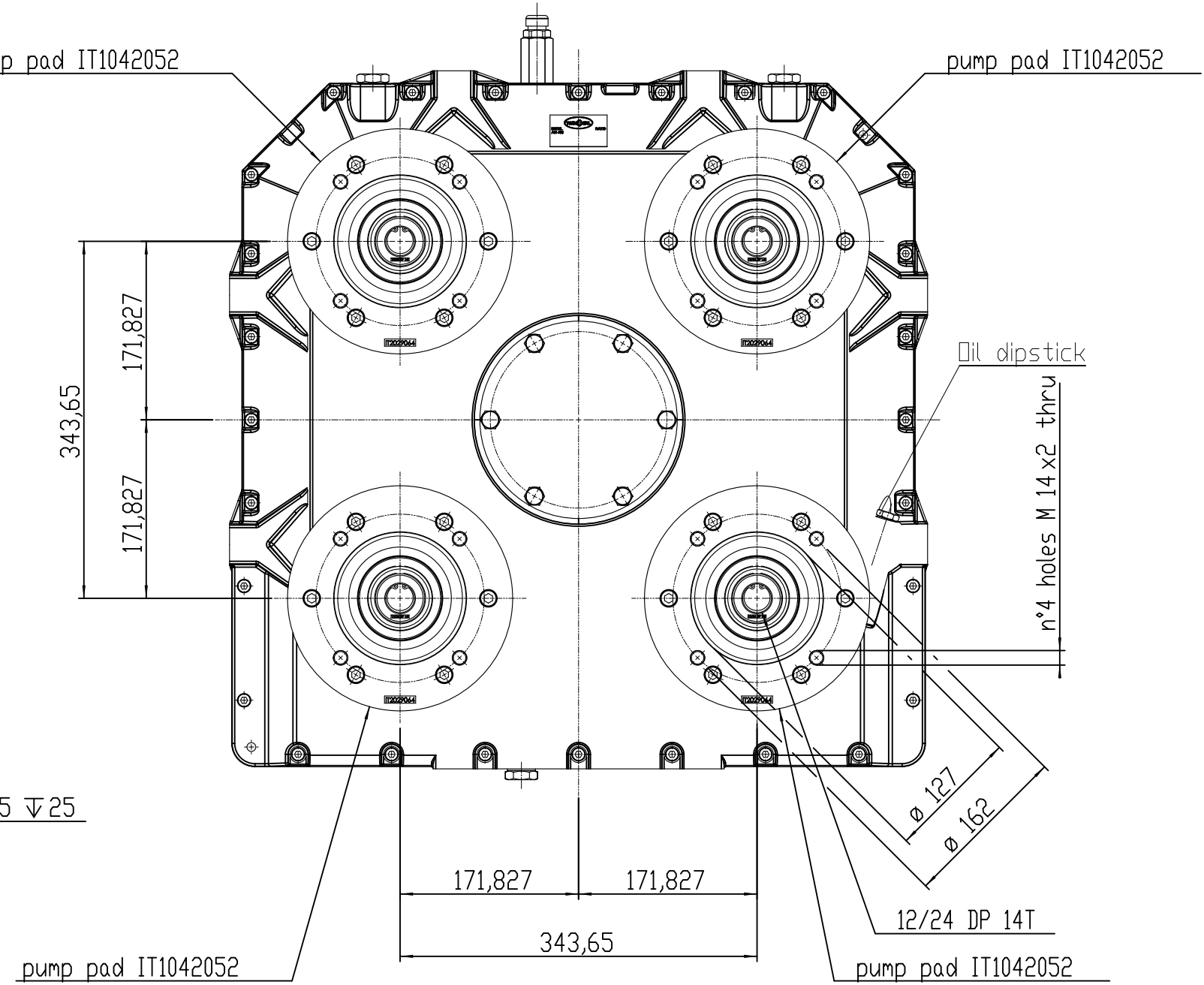
input assy IT1071025B
housing SAE 2 flywheel 11.5"

Breather plug



pump pad IT1042052

pump pad IT1042052



Drawing and 3D model are valid for all ratios

FIRST USE ASSEMBLY:	WEIGHT:	kg	THIRD ANGLE PROJECTION	MATERIAL:	DATE:
FIRST USE MODEL:	kg-m ³	kg-m ³	UNLESS OTHERWISE SPECIFIED MACHINED DIMENSIONS:	HEAT TREAT:	28-Aug-15
SIMILAR TID:			I ± 0,75		SCALE:
			II ± 0,25		1:5
			III ± 0,15		DRAWN BY:
			ALL ANGULAR TOLERANCES: $\pm 1^{\circ}$		Rosso
			GEOMETRIC TOLERANCING PER ASME Y14.5M 1994		CHECKED BY:
					Guzzinati
					APPROVED BY:
					Guzzinati
NOTICE: THIS PRINT CONTAINS PROPRIETARY INFORMATION AND IS NOT TO BE USED IN ANY MANNER IS ESSENTIAL TO THE INTEREST OF TWIN DISC, INCORPORATED. THIS NOTICE IS NOT INTENDED TO WAIVE OR LIMIT RIGHTS GRANTED TO THE U.S. GOVERNMENT OR OTHERS BY CONTRACT.				DESCRIPTION: Installation pump drive, AM 450 BOM n°46407	
				DWG SIZE: A2	SHEET: 1 OF 1
				REV: -	REV: -

-	NDWF-06268	26-08-15
REV	CHANGE NDL	DATE
TWIN DISC SRL - ITALY		
1028864E		
DWG SIZE: A2	SHEET: 1 OF 1	REV: -