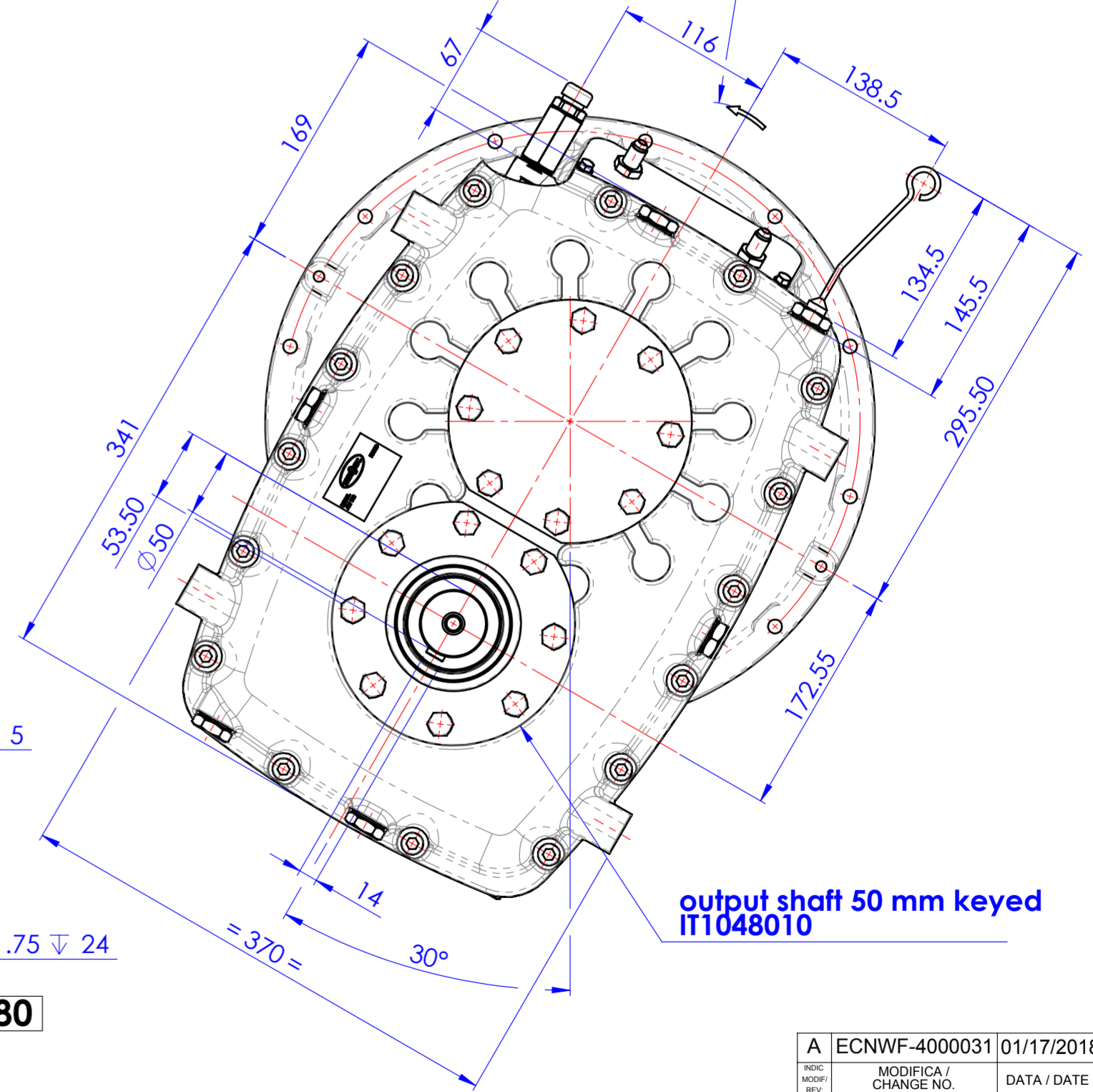
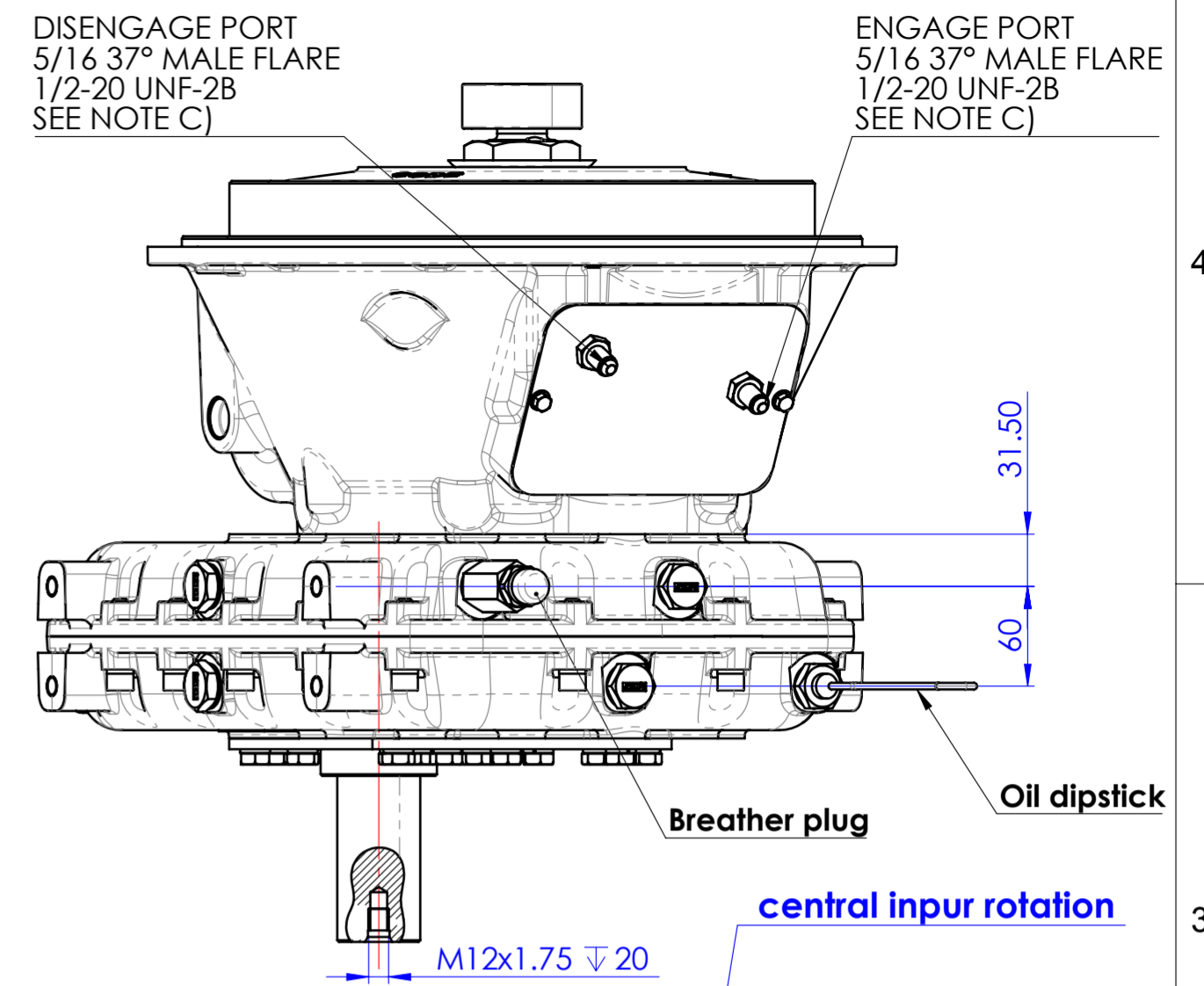
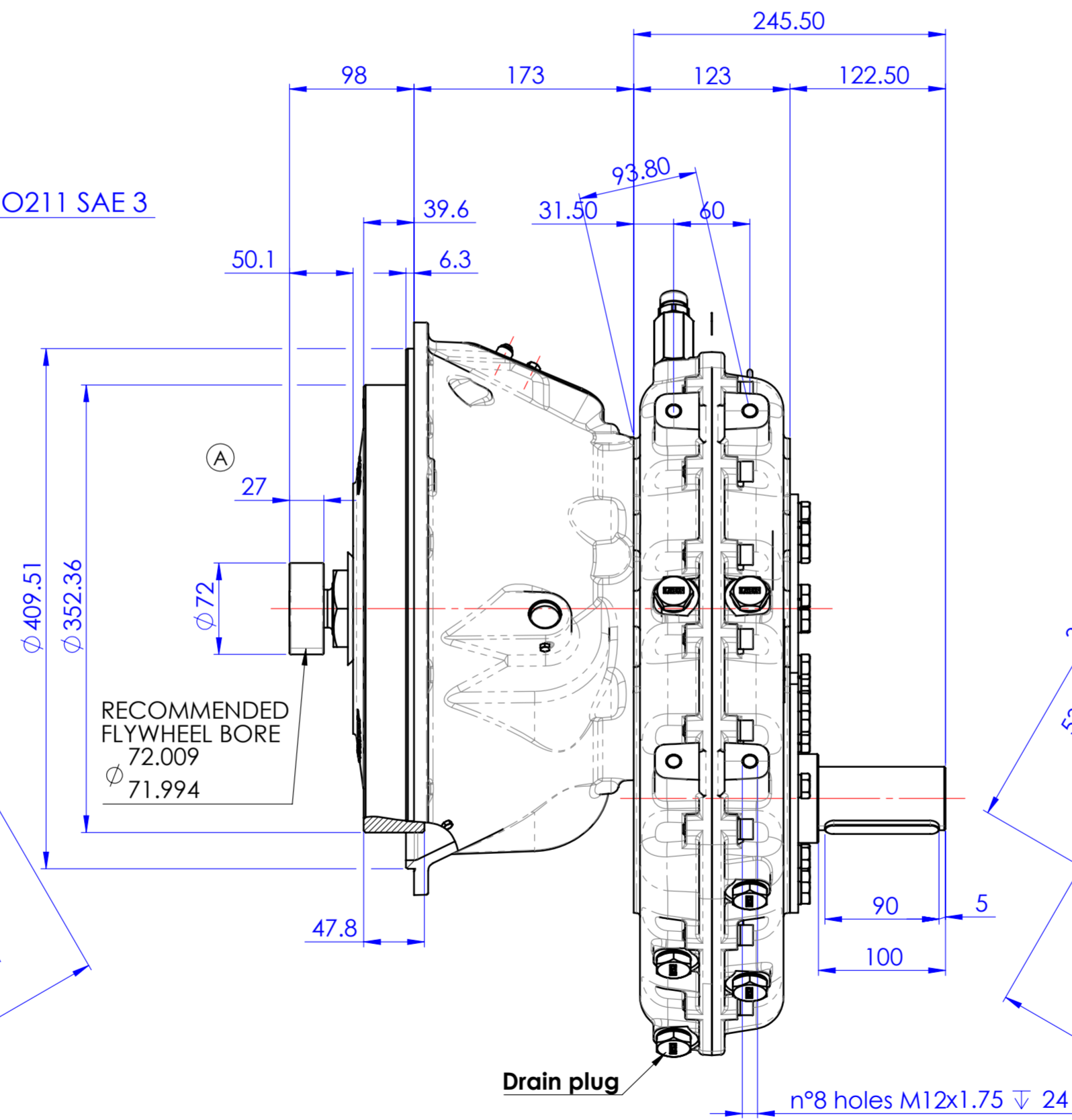
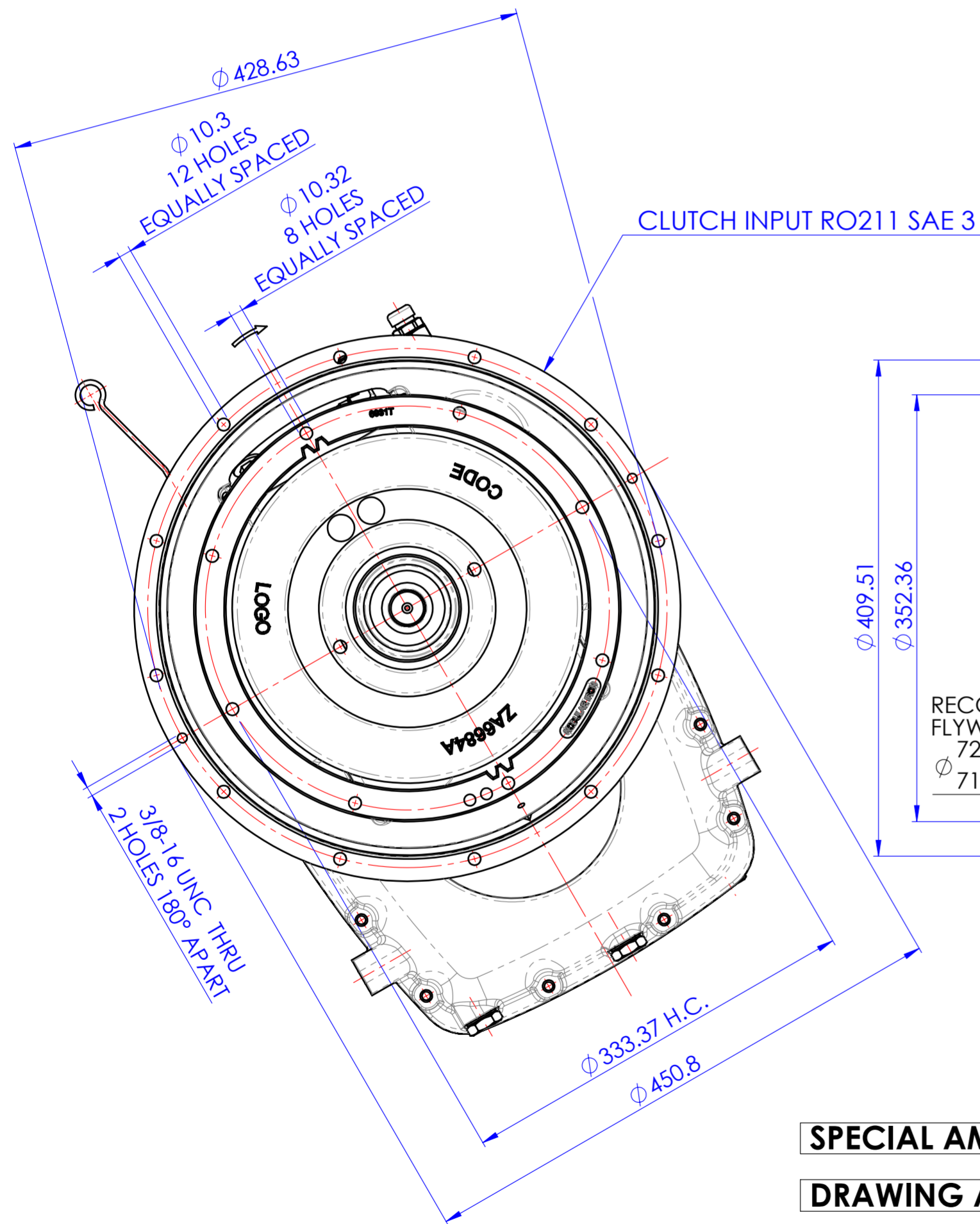


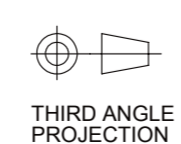
GENERAL NOTES:
 a.) REFER TO PRODUCT LIST WHEN ORDERING PARTS
 b.) REFER TO CARE & OPERATION MANUAL FOR ADDITIONAL INFO.
 c.) REFER TO PIPING DRAWING 1029340A FOR HYDRAULIC CONNECTIONS
 OR 1029340C FOR PNEUMATIC CONNECTIONS



SPECIAL AM110 ROTATED 30°CW: BASIC ASSY GROUP IT1005180

DRAWING AND 3D MODEL ARE VALID FOR ALL RATIOS

PRIMO UTILIZZO MONTAGGIO/FIRST USE ASSEMBLY:
 PRIMO IMPIEGO MODELLO/FIRST USE MODEL:
 SIMILE A/SIMILAR TO:
METRIC
 NOTICE! THIS PRINT CONTAINS PROPRIETARY INFORMATION AND IS NOT TO BE USED IN ANY MANNER DETRIMENTAL TO THE INTEREST OF TWIN DISC, INCORPORATED. THIS NOTICE IS NOT INTENDED TO NULLIFY OR LIMIT RIGHTS GRANTED TO THE U.S. GOVERNMENT OR OTHERS BY CONTRACT.



MODELLO / MADE FROM:
 PESO WEIGHT: kg
 WR: kg-m³
 TOLL. GEN. DILAVORAZIONE H13 FORO - H13 ALBERO 1,14 DIMENSIONI LINEARI
 +0.15 fino ϕ 200 +0.10 fino ϕ 500

MATERIALE / MATERIAL:
 TRATT. TERMICO / HEAT TREAT:
 TRATT. SUP. / SURFACE TREATMENT:
 DESCRIZIONE:
INGOMBRO AM110 BOM 1029010H

DATA / DATE:
 08/30/2016
 SCALA / SCALE:
 1:4
 DIS / DRAWN:
 PR
 VERIF. / CHECK:
 GG
 APPROVATO/APP:
 DAJ
 DESCRIPTION:
INSTALLATION PUMP DRIVE AM110 BOM 1029010H

A	ECNWF-4000031	01/17/2018
INDIC. MODIF. / REV.	MODIFICA / CHANGE NO.	DATA / DATE
TWIN(DISC)		
DECIMA - ITALY		
1029011G		
FORMATO / SIZE:	FOGLIO / SHEET:	INDIC. MODIF. / REV.
A2	1 OF 1	A

D

C

B

A