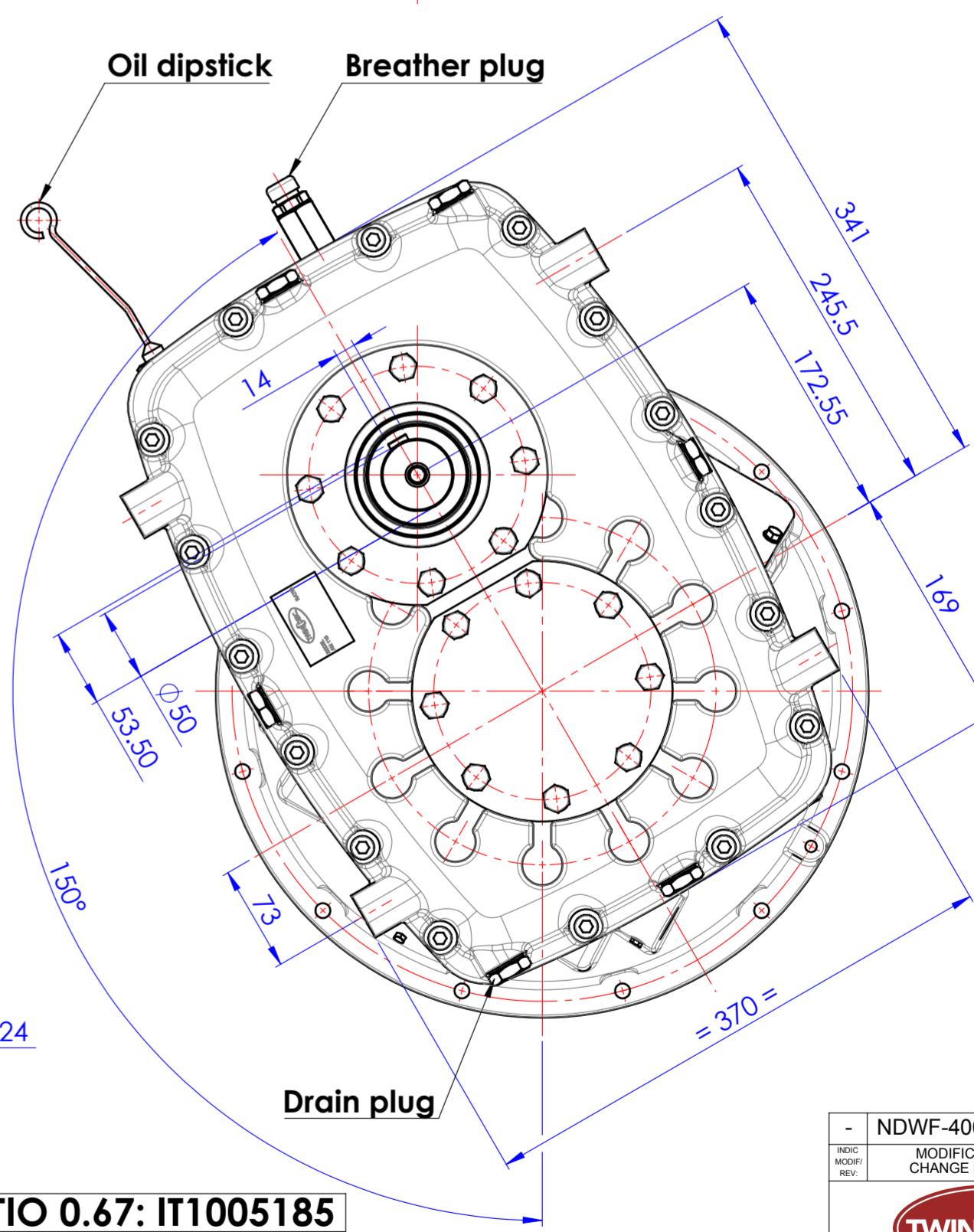
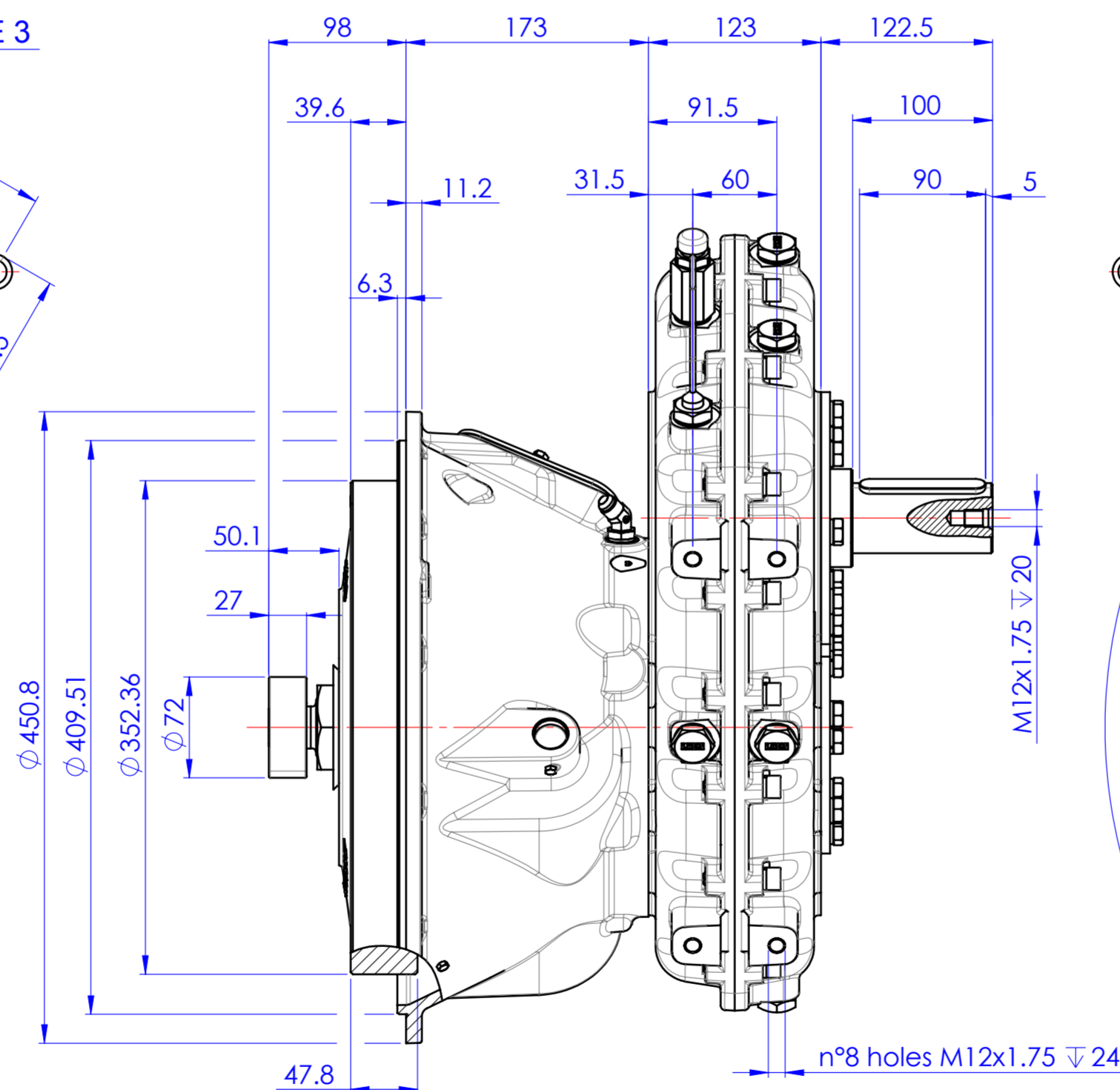
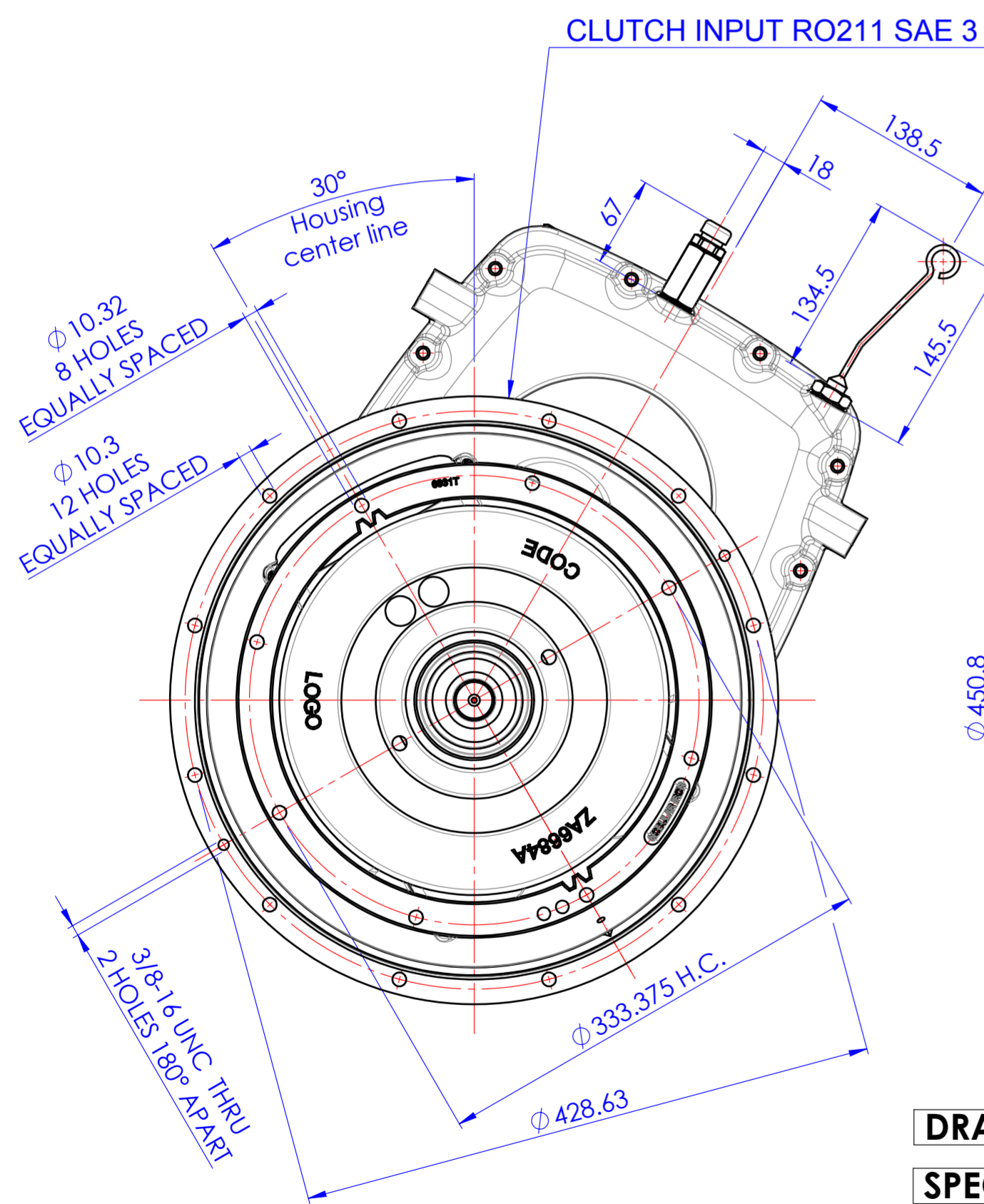
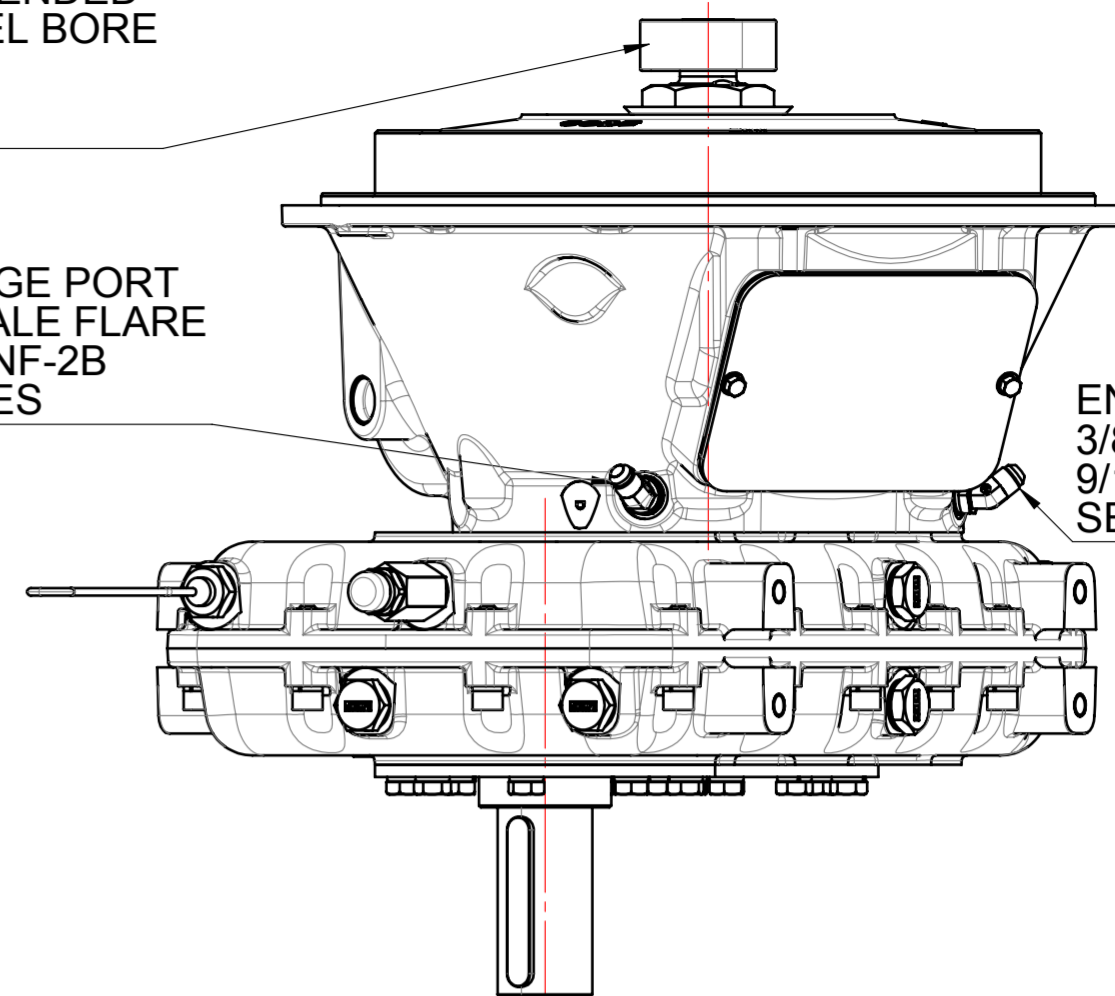


GENERAL NOTES:
 a.) REFER TO PRODUCT LIST WHEN ORDERING PARTS
 b.) REFER TO CARE & OPERATION MANUAL FOR ADDITIONAL INFO.
 c.) REFER TO PIPING DRAWING 1029340F FOR HYDRAULIC CONNECTIONS.

RECOMMENDED
 FLYWHEEL BORE
 72.009
 ϕ 71.994

DISENGAGE PORT
 3/8 37° MALE FLARE
 9/16-18 UNF-2B
 SEE NOTES

ENGAGE PORT
 3/8 37° MALE FLARE
 9/16-18 UNF-2B
 SEE NOTES



DRAWING AND 3D MODEL ARE VALID FOR ALL RATIOS

SPECIAL AM110 ROTATED 150°CW, BASIC ASSY GROUP FOR RATIO 0.67: IT1005185

PRIMO UTILIZZO MONTAGGIO/FIRST USE ASSEMBLY: PRIMO IMPIEGO MODELLO/FIRST USE MODEL: SIMILE A/SIMILAR TO:	PESO WEIGHT: kg WR: kg-m ³	RUGOSITA' GEN. Ra (μ m): () QUOTE SENZA INDICAZIONE DI TOLLERANZA UNI ISO 2768 - c DIMENSIONS WITHOUT TOLERANCES GOLE DI SCARICO FILETTATURE SECONDO NORMATIVE UNIT ISO 4755 - UNI 5709 - UNI5710 THREAD UNDERCUTS ACCORDING TO STANDARD ISO	MATERIALE / MATERIAL: TRATT. TERMICO / HEAT TREAT:	DATA / DATE: 04/09/2018 SCALA / SCALE: 1:4 DIS / DRAWN: PR	INDIC. MODIF. REV. / MODIFICA / CHANGE NO. DATA / DATE
METRIC	FIRST ANGLE PROJECTION	DESCRIZIONE: INGOMBRO AM110 BOM 1029010N	TRATT. SUP. / SURFACE TREATMENT:	VERIF. / CHECK: GG APPROVATO/APP. DAJ	1029011M
NOTICE! THIS PRINT CONTAINS PROPRIETARY INFORMATION AND IS NOT TO BE USED IN ANY MANNER DETRIMENTAL TO THE INTEREST OF TWIN DISC, INCORPORATED. THIS NOTICE IS NOT INTENDED TO NULLIFY OR LIMIT RIGHTS GRANTED TO THE U.S. GOVERNMENT OR OTHERS BY CONTRACT.			DESCRIZIONE: INSTALLATION PUMP DRIVE AM110 BOM 1029010N	FORMATO / SIZE: A2	FOGLIO / SHEET: 1 OF 1

D

C

B

A

1025420W Rev. B